

Build Part Number

S	L	A	P	5	6	7	8	9	10	1	5	H	14	15
16	17	18	19	20										

A complete Series SLA part number is 20 digits. For example, SLAP06C3DQ15H1FV143S.

DIGIT	CODE	SERIES DRIVE TYPE
1-3	SLA	STROKE LENGTH ADJUSTABLE

DIGIT	CODE	HEAD ADAPTER
4	P	PLUNGER

DIGIT	CODE	PLUNGER DIAMETER
5-6	06	3/8 IN - DEDICATED ONLY
	08	1/2 IN - STANDARD ONLY
	12	3/4 IN - STANDARD OR EV ONLY
	16	1 IN - STANDARD OR EV ONLY
	24	1.5 IN - DEDICATED ONLY

DIGIT	CODE	PLUNGER MATERIAL
7	C	CERAMIC COATED HASTELLOY*
	3	316SS
	D	DUPLEX 2205
	H	HASTELLOY C276
	T	TITANIUM

*1.5" plunger is ceramic coated S316.

DIGIT	CODE	HEAD/CHECK MATERIAL
8	3	316SS
	D	DUPLEX 2205
	H	HASTELLOY C276
	K	KYNAR (NOT AVAILABLE FOR 1.5")*
	P	PVC (NOT AVAILABLE FOR 1.5")*
	T	TITANIUM

*Kynar & PVC heads have Hastelloy check valves.

DIGIT	CODE	HEAD TYPE
9	D	DEDICATED (3/8", 1.5")
	E	EXTREME VISCOSITY (3/4", 1")
	L	LeakLess (3/8", 1/2", 3/4", 1", 1.5")
	K	LeakLess with Leak Detection
	S	STD MODULAR (1/2", 3/4", 1")

* Refer to Digit 5-6 for availability according to plunger diameter.

*Leak Detection sensor sold separately.

DIGIT	CODE	PLUNGER SEAL MATERIAL
10	F	FFKM/PEEK/CTFM FOR 3/8"-1"
		FFKM/PEEK/CTFM FOR 1.5"
	H	HNBR/PEEK/CTFM FOR ALL
	E	EPDM/PEEK/CTFM FOR ALL
	Q	FKM/PEEK/CTFM FOR ALL

DIGIT	CODE	GEAR REDUCTION RATIO
11-12	15	15:1

DIGIT	CODE	CONTROL
13	H	HAND (MANUAL)
	A	ROTARY ACTUATED (AUTO)

*Actuator sold separately.

DIGIT	CODE	FEET / MOUNTING BRACKET TYPE
14-15	1F	STANDARD FULL MOUNT
	1L	STANDARD HALF MOUNT LEFT

DIGIT	CODE	MOTOR ORIENTATION
16	H	HORIZONTAL
	V	VERTICAL

DIGIT	CODE	MOTOR FLANGE
17-19	056	NEMA 56C
	143	NEMA 143/145TC
	182	NEMA 182/184TC
	071	IEC 71 B5
	080	IEC 80 B5
	090	IEC 90 B5

DIGIT	CODE	COATING
20	S	STANDARD
	T	3-STAGE OFFSHORE

NOTE
Options marked "CALL" may have extended lead times.
Motor sold separately.



Series SLA Mult Drive Order Guide



Build Part Number

S	L	A	P	5	6	7	8	9	10	1	5	H	14	15
16	17	18												

A complete Series SLA part number is 18 digits. For example, SLAP06C3DQ15H1LH2S. When ordering the Mult Pump each individual pump will have it's own Build Part Number and Price.

DIGIT	CODE	SERIES DRIVE TYPE
1-3	SLA	STROKE LENGTH ADJUSTABLE

DIGIT	CODE	HEAD ADAPTER
4	P	PLUNGER

DIGIT	CODE	PLUNGER DIAMETER
5-6	06	3/8 IN - DEDICATED ONLY
	08	1/2 IN - STANDARD ONLY
	12	3/4 IN - STANDARD OR EV ONLY
	16	1 IN - STANDARD OR EV ONLY
	24	1.5 IN - DEDICATED ONLY

DIGIT	CODE	PLUNGER MATERIAL
7	C	CERAMIC COATED HASTELLOY*
	3	316SS
	D	DUPLEX 2205
	H	HASTELLOY C276
	T	TITANIUM

*1.5" plunger is ceramic coated S316.

DIGIT	CODE	HEAD/CHECK MATERIAL
8	3	316SS
	D	DUPLEX 2205
	H	HASTELLOY C276
	K	KYNAR (NOT AVAILABLE FOR 1.5")*
	P	PVC (NOT AVAILABLE FOR 1.5")*
	T	TITANIUM

*Kynar & PVC heads have Hastelloy check valves.

DIGIT	CODE	HEAD TYPE
9	D	DEDICATED (3/8", 1.5")
	E	EXTREME VISCOSITY (3/4", 1")
	L	LeakLess (3/8", 1/2", 3/4", 1", 1.5")
	K	LeakLess with Leak Detection
	S	STD MODULAR (1/2", 3/4", 1")

* Refer to Digit 5-6 for availability according to plunger diameter.

*Leak Detection sensor sold separately.

DIGIT	CODE	PLUNGER SEAL MATERIAL
10	F	FFKM/PEEK/CTFM FOR 3/8"-1"
		FFKM/PEEK/CTFM FOR 1.5"
	H	HNBR/PEEK/CTFM FOR ALL
	E	EPDM/PEEK/CTFM FOR ALL
	Q	FKM/PEEK/CTFM FOR ALL

DIGIT	CODE	GEAR REDUCTION RATIO
11-12	15	15:1

DIGIT	CODE	CONTROL
13	H	HAND (MANUAL)
	A	ROTARY ACTUATED (AUTO)

*Actuator sold separately.

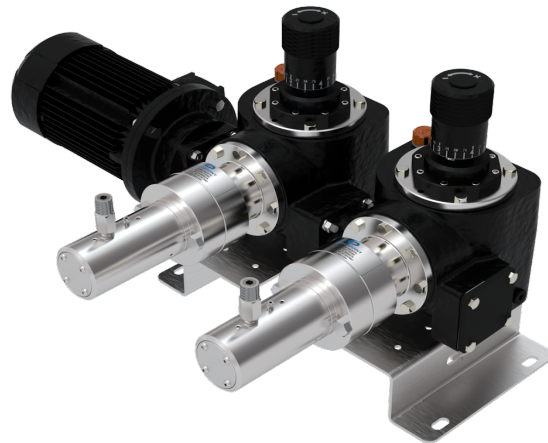
DIGIT	CODE	FEET / MOUNTING BRACKET TYPE
14-15	1R	STANDARD HALF BRACKET RIGHT
	NF	NO BRACKET

DIGIT	CODE	MOTOR ORIENTATION
16	H	HORIZONTAL

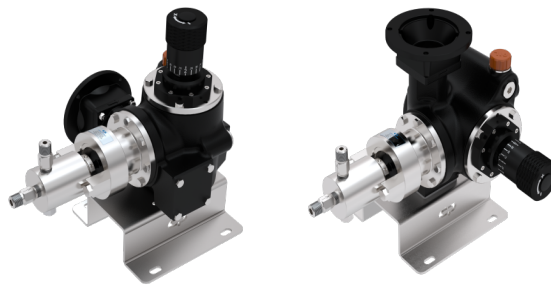
DIGIT	CODE	MOTOR FLANGE
17	2	PUMP 2
	3	PUMP 3
	4	PUMP 4
	5	PUMP 5
	6	PUMP 6

DIGIT	CODE	COATING
18	S	STANDARD
	T	3-STAGE OFFSHORE

NOTE
Options marked "CALL" may have extended lead times.
Motor sold separately.



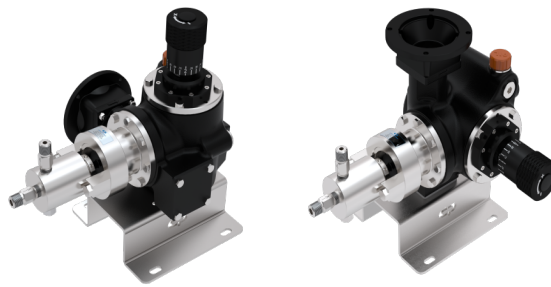
Series SLA Parts Order Guide



Please inquire with CheckPoint if you need an item that is not listed below.

PART #	DESCRIPTION
MISCELLANEOUS	
T10010	HEAD SEAL GLAND INSTALLATION TOOL
K50BAS6	KIT 1500 HEAD BLEED ASSY - 316SS - CERAMIC BALL - C276 HASTELLOY SPRING
K50BAHC	KIT 1500 HEAD BLEED ASSY - C276 - CERAMIC BALL - C276 HASTELLOY SPRING
SLA0040-01	PLASTIC DRIVE COVER
PLGSG-0001	OIL LEVEL INDICATOR
CAPVO-0001	OIL FILL CAP
SLA0004-01	BASE MOUNT FULL - 316SS
SLA0004-02	BASE MOUNT HALF - 316SS
HEAD REBUILD KIT	
K50HRK06NF	HEAD REBUILD KIT - 3/8 IN - FFKM - INCLUDES: NON-ADJUST PLUNGER SEAL KIT, CHECK KITS
K50HRK06NH	HEAD REBUILD KIT - 3/8 IN - HNBR - INCLUDES: NON-ADJUST PLUNGER SEAL KIT, CHECK KITS
K50HRK06NE	HEAD REBUILD KIT - 3/8 IN - EPDM - INCLUDES: NON-ADJUST PLUNGER SEAL KIT, CHECK KITS
K50HRK06NQ	HEAD REBUILD KIT - 3/8 IN - FKM - INCLUDES: NON-ADJUST PLUNGER SEAL KIT, CHECK KITS
K50HRK08NF	HEAD REBUILD KIT - 1/2 IN - FFKM - INCLUDES: NON-ADJUST PLUNGER SEAL KIT, CHECK KITS
K50HRK08NH	HEAD REBUILD KIT - 1/2 IN - HNBR - INCLUDES: NON-ADJUST PLUNGER SEAL KIT, CHECK KITS
K50HRK08NE	HEAD REBUILD KIT - 1/2 IN - EPDM - INCLUDES: NON-ADJUST PLUNGER SEAL KIT, CHECK KITS
K50HRK08NQ	HEAD REBUILD KIT - 1/2 IN - FKM - INCLUDES: NON-ADJUST PLUNGER SEAL KIT, CHECK KITS
K50HRK12NF	HEAD REBUILD KIT - 3/4 IN - FFKM - INCLUDES: NON-ADJUST PLUNGER SEAL KIT, CHECK KITS
K50HRK12NH	HEAD REBUILD KIT - 3/4 IN - HNBR - INCLUDES: NON-ADJUST PLUNGER SEAL KIT, CHECK KITS
K50HRK12NE	HEAD REBUILD KIT - 3/4 IN - EPDM - INCLUDES: NON-ADJUST PLUNGER SEAL KIT, CHECK KITS
K50HRK12NQ	HEAD REBUILD KIT - 3/4 IN - FKM - INCLUDES: NON-ADJUST PLUNGER SEAL KIT, CHECK KITS
K50HRK16NF	HEAD REBUILD KIT - 1 IN - FFKM - INCLUDES: NON-ADJUST PLUNGER SEAL KIT, CHECK KITS
K50HRK16NH	HEAD REBUILD KIT - 1 IN - HNBR - INCLUDES: NON-ADJUST PLUNGER SEAL KIT, CHECK KITS
K50HRK16NE	HEAD REBUILD KIT - 1 IN - EPDM - INCLUDES: NON-ADJUST PLUNGER SEAL KIT, CHECK KITS
K50HRK16NQ	HEAD REBUILD KIT - 1 IN - FKM - INCLUDES: NON-ADJUST PLUNGER SEAL KIT, CHECK KITS
K50HRK24NF	HEAD REBUILD KIT - 1-1/2 IN - FFKM - INCLUDES: NON-ADJUST PLUNGER SEAL KIT, CHECK KITS
K50HRK24NH	HEAD REBUILD KIT - 1-1/2 IN - HNBR - INCLUDES: NON-ADJUST PLUNGER SEAL KIT, CHECK KITS
K50HRK24NQ	HEAD REBUILD KIT - 1-1/2 IN - FKM - INCLUDES: NON-ADJUST PLUNGER SEAL KIT, CHECK KITS
PLUNGER KIT	
K50PLRCU06	3/8 IN PLUNGER REPL KIT - CERAMIC COATED C276
K50PLRCU08	1/2 IN PLUNGER REPL KIT - CERAMIC COATED C276
K50PLRCU12	3/4 IN PLUNGER REPL KIT - CERAMIC COATED C276
K50PLRCU16	1 IN PLUNGER REPL KIT - CERAMIC COATED C276
K50PLRCU24	1-1/2 IN PLUNGER REPL KIT - CERAMIC COATED 316SS
K50PLRHU06	3/8 IN PLUNGER REPL KIT - C276 HASTELLOY
K50PLRHU08	1/2 IN PLUNGER REPL KIT - C276 HASTELLOY
K50PLRHU12	3/4 IN PLUNGER REPL KIT - C276 HASTELLOY
K50PLRHU16	1 IN PLUNGER REPL KIT - C276 HASTELLOY
K50PLRHU24	1-1/2 IN PLUNGER REPL KIT - C276 HASTELLOY
K50PLRSU08	1/2 IN PLUNGER REPL KIT - 316SS
K50PLRSU12	3/4 IN PLUNGER REPL KIT - 316SS
K50PLRSU16	1 IN PLUNGER REPL KIT - 316SS
K50PLRSU24	1-1/2 IN PLUNGER REPL KIT - 316SS
K50PLRTU16	1 IN PLUNGER REPL KIT - TITANIUM
K50PLRTU12	3/4 IN PLUNGER REPL KIT - TITANIUM
K50PLRTU16	1 IN PLUNGER REPL KIT - TITANIUM
K50PLRTU24	1-1/2 IN PLUNGER REPL KIT - TITANIUM

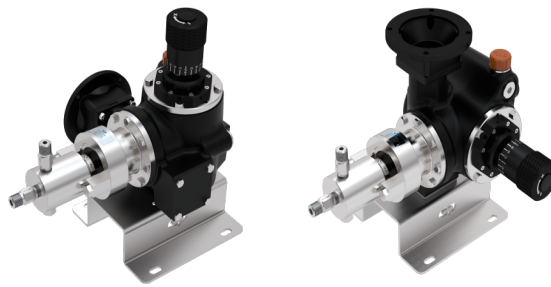
Series SLA Parts Order Guide



Please inquire with CheckPoint if you need an item that is not listed below.

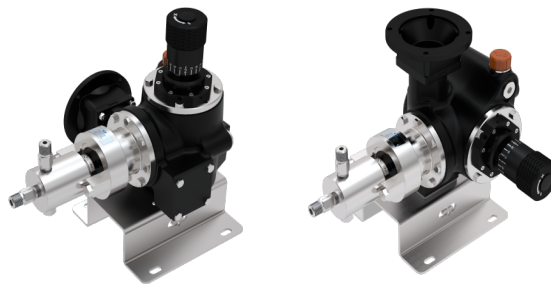
PART#	DESCRIPTION
PLUNGER SEAL KIT	
KNCS06F087098	3/8 IN - FFKM/PEEK/CTFM VEE SEAL WITH WIPER
KNCS06H087098	3/8 IN - HNBR/PEEK/CTFM VEE SEAL WITH WIPER
KNCS06E087099	3/8 IN - EPDM/PEEK/CTFM VEE SEAL WITH WIPER
KNCS06Q087098	3/8 IN - FKM/PEEK/CTFM VEE SEAL WITH WIPER
KNCS08F100098	1/2 IN - FFKM/PEEK/CTFM VEE SEAL WITH WIPER
KNCS08H100098	1/2 IN - HNBR/PEEK/CTFM VEE SEAL WITH WIPER
KNCS08E100098	1/2 IN - EPDM/PEEK/CTFM VEE SEAL WITH WIPER
KNCS08Q100098	1/2 IN - FKM/PEEK/CTFM VEE SEAL WITH WIPER
KNCS12F125098	3/4 IN - FFKM/PEEK/CTFM VEE SEAL WITH WIPER
KNCS12H125098	3/4 IN - HNBR/PEEK/CTFM VEE SEAL WITH WIPER
KNCS12E125098	3/4 IN - EPDM/PEEK/CTFM VEE SEAL WITH WIPER
KNCS12Q125098	3/4 IN - FKM/PEEK/CTFM VEE SEAL WITH WIPER
KNCS16F150118	1 IN - FFKM/PEEK/CTFM VEE SEAL WITH WIPER
KNCS16H150118	1 IN - HNBR/PEEK/CTFM VEE SEAL WITH WIPER
KNCS16E150118	1 IN - EPDM/PEEK/CTFM VEE SEAL WITH WIPER
KNCS16Q150118	1 IN - FKM/PEEK/CTFM VEE SEAL WITH WIPER
VZ524FLCP1	1-1/2 IN - FFKM/PEEK/CTFE ZEE SEAL
VZ524QLCP1	1-1/2 IN - FKM/PEEK/CTFE ZEE SEAL
CHECK VALVE	
CFM08S6F201	3/8" HEAD SUCTION - 1/2" NPT CHECK ASSY - FFKM - 1 PSIG - 316SS
CFM08S6H201	3/8" HEAD SUCTION - 1/2" NPT CHECK ASSY - HNBR - 1 PSIG - 316SS
CFM08S6E201	3/8" HEAD SUCTION - 1/2" NPT CHECK ASSY - EPDM - 1 PSIG - 316SS
CFM08S6Q201	3/8" HEAD SUCTION - 1/2" NPT CHECK ASSY - FKM - 1 PSIG - 316SS
CDA06S6F101	3/8" HEAD DISCHARGE - 3/8" AUTOCLAVE X 7/8" UNF CHECK ASSY - FFKM - 316SS
CDA06S6H101	3/8" HEAD DISCHARGE - 3/8" AUTOCLAVE X 7/8" UNF CHECK ASSY - HNBR - 316SS
CDA06S6E101	3/8" HEAD DISCHARGE - 3/8" AUTOCLAVE X 7/8" UNF CHECK ASSY - EPDM - 316SS
CDA06S6Q101	3/8" HEAD DISCHARGE - 3/8" AUTOCLAVE X 7/8" UNF CHECK ASSY - FKM - 316SS
CFM08HCF101	1/2", 3/4", 1" MODULAR HEAD SUC & DIS - 1/2" NPT CHECK ASSY - FFKM - 1 PSIG - C276
CFM08HCQ101	1/2", 3/4", 1" MODULAR HEAD SUC & DIS - 1/2" NPT CHECK ASSY - FKM - 1 PSIG - C276
CFM08S6F101	1/2", 3/4", 1" MODULAR HEAD SUC & DIS - 1/2" NPT CHECK ASSY - FFKM - 1 PSIG - 316SS
CFM08S6H101	1/2", 3/4", 1" MODULAR HEAD SUC & DIS - 1/2" NPT CHECK ASSY - HNBR - 1 PSIG - 316SS
CFM08S6E101	1/2", 3/4", 1" MODULAR HEAD SUC & DIS - 1/2" NPT CHECK ASSY - EPDM - 1 PSIG - 316SS
CFM08S6Q101	1/2", 3/4", 1" MODULAR HEAD SUC & DIS - 1/2" NPT CHECK ASSY - FKM - 1 PSIG - 316SS
CFM08TTF101	1/2", 3/4", 1" MODULAR HEAD SUC & DIS - 1/2" NPT CHECK ASSY - FFKM - 1 PSIG - TITANIUM
CFM08TTQ101	1/2", 3/4", 1" MODULAR HEAD SUC & DIS - 1/2" NPT CHECK ASSY - FKM - 1 PSIG - TITANIUM
CFM12SHCF201	1.5" HEAD SUCTION - 3/4" NPT CHECK - FFKM - C276
CFM12SHCQ201	1.5" HEAD SUCTION - 3/4" NPT CHECK - FKM - C276
CFM12SS6F201	1.5" HEAD SUCTION - 3/4" NPT CHECK - FFKM - 316SS
CFM12SS6H201	1.5" HEAD SUCTION - 3/4" NPT CHECK - HNBR - 316SS
CFM12SS6Q201	1.5" HEAD SUCTION - 3/4" NPT CHECK - FKM - 316SS
CFM12STTF201	1.5" HEAD SUCTION - 3/4" NPT CHECK - FFKM - TITANIUM
CFM12STTQ201	1.5" HEAD SUCTION - 3/4" NPT CHECK - FKM - TITANIUM
CDM12D4F101	1.5" HEAD DISCHARGE - 3/4" NPT CHECK - FFKM - DUPLEX 2205
CDM12D4Q101	1.5" HEAD DISCHARGE - 3/4" NPT CHECK - FKM - DUPLEX 2205
CDM12D5F101	1.5" HEAD DISCHARGE - 3/4" NPT CHECK - FFKM - SUPER DUPLEX 2507
CDM12HCF101	1.5" HEAD DISCHARGE - 3/4" NPT CHECK - FFKM - C276
CDM12HCQ101	1.5" HEAD DISCHARGE - 3/4" NPT CHECK - FKM - C276
CDM12S6F101	1.5" HEAD DISCHARGE - 3/4" NPT CHECK - FFKM - 316SS
CDM12S6H101	1.5" HEAD DISCHARGE - 3/4" NPT CHECK - HNBR - 316SS
CDM12S6Q101	1.5" HEAD DISCHARGE - 3/4" NPT CHECK - FKM - 316SS
CDM12TTF101	1.5" HEAD DISCHARGE - 3/4" NPT CHECK - FFKM - TITANIUM
CDM12TTQ101	1.5" HEAD DISCHARGE - 3/4" NPT CHECK - FKM - TITANIUM

Series SLA Parts Order Guide



Please inquire with CheckPoint if you need an item that is not listed below.

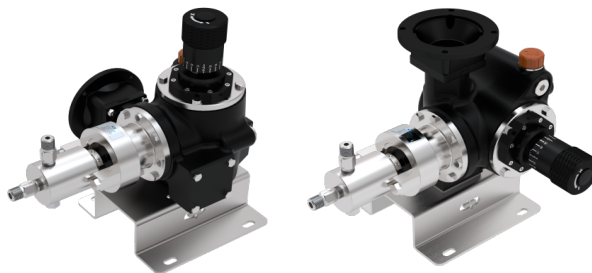
PART#	DESCRIPTION
CHECK VALVE REBUILD KIT (1 KIT REQUIRED PER CHECK VALVE)	
KFF04S6F301	FITS: 3/8" SUCTION CFM08##F201 & 3/8" DISCHARGE CDA06##F101 - FFKM O-RINGS - SPRING
KFF04S6H301	FITS: 3/8" SUCTION CFM08##H201 & 3/8" DISCHARGE CDA06##H101 - HNBR O-RINGS - SPRING
KFF04S6E301	FITS: 3/8" SUCTION CFM08##H201 & 3/8" DISCHARGE CDA06##H101 - EPDM O-RINGS - SPRING
KFF04S6Q301	FITS: 3/8" SUCTION CFM08##Q201 & 3/8" DISCHARGE CDA06##Q101 - FKM O-RINGS - SPRING
KFM08S6F101	FITS: 1/2", 3/4", 1" MODULAR SUCTION & DISCHARGE CFM08##F101 - FFKM O-RINGS - SPRING
KFM08S6H101	FITS: 1/2", 3/4", 1" MODULAR SUCTION & DISCHARGE CFM08##H101 - HNBR O-RINGS - SPRING
KFM08S6E101	FITS: 1/2", 3/4", 1" MODULAR SUCTION & DISCHARGE CFM08##H101 - EPDM O-RINGS - SPRING
KFM08S6Q101	FITS: 1/2", 3/4", 1" MODULAR SUCTION & DISCHARGE CFM08##Q101 - FKM O-RINGS - SPRING
KFM12S6F201	FITS: 1.5" SUCTION CFM12S##F201 & DISCHARGE CDM12##F101 - FFKM O-RINGS - SPRING
KFM12S6H201	FITS: 1.5" SUCTION CFM12S##H201 & DISCHARGE CDM12##H101 - HNBR O-RINGS - SPRING
KFM12S6Q201	FITS: 1.5" SUCTION CFM12S##Q201 & DISCHARGE CDM12##Q101 - FKM O-RINGS - SPRING
COMPLETE WET END ASSEMBLY	
W50D306CNF3F6	3/8" WET END - 316SS HEAD/CHECKS - CERAMIC COATED C276 PLUNGER - FFKM SEALS W/WIPER
W50D306CNH3H6	3/8" WET END - 316SS HEAD/CHECKS - CERAMIC COATED C276 PLUNGER - HNBR SEALS W/WIPER
W50D306CNE3E6	3/8" WET END - 316SS HEAD/CHECKS - CERAMIC COATED C276 PLUNGER - EPDM SEALS W/WIPER
W50D306CNQ3Q6	3/8" WET END - 316SS HEAD/CHECKS - CERAMIC COATED C276 PLUNGER - FKM SEALS W/WIPER
W50M308CNF3F6	1/2" WET END - 316SS HEAD/CHECKS - CERAMIC COATED C276 PLUNGER - FFKM SEALS W/WIPER
W50M308CNH3H6	1/2" WET END - 316SS HEAD/CHECKS - CERAMIC COATED C276 PLUNGER - HNBR SEALS W/WIPER
W50M308CNE3HE	1/2" WET END - 316SS HEAD/CHECKS - CERAMIC COATED C276 PLUNGER - EPDM SEALS W/WIPER
W50M308CNQ3Q6	1/2" WET END - 316SS HEAD/CHECKS - CERAMIC COATED C276 PLUNGER - FKM SEALS W/WIPER
W50M312CNF3F6	3/4" WET END - 316SS HEAD/CHECKS - CERAMIC COATED C276 PLUNGER - FFKM SEALS W/WIPER
W50M312CNH3H6	3/4" WET END - 316SS HEAD/CHECKS - CERAMIC COATED C276 PLUNGER - HNBR SEALS W/WIPER
W50M312CNE3E6	3/4" WET END - 316SS HEAD/CHECKS - CERAMIC COATED C276 PLUNGER - EPDM SEALS W/WIPER
W50M312CNQ3Q6	3/4" WET END - 316SS HEAD/CHECKS - CERAMIC COATED C276 PLUNGER - FKM SEALS W/WIPER
W50M316CNF3F6	1" WET END - 316SS HEAD/CHECKS - CERAMIC COATED C276 PLUNGER - FFKM SEALS W/WIPER
W50M316CNH3H6	1" WET END - 316SS HEAD/CHECKS - CERAMIC COATED C276 PLUNGER - HNBR SEALS W/WIPER
W50M316CNE3E6	1" WET END - 316SS HEAD/CHECKS - CERAMIC COATED C276 PLUNGER - EPDM SEALS W/WIPER
W50M316CNQ3Q6	1" WET END - 316SS HEAD/CHECKS - CERAMIC COATED C276 PLUNGER - FKM SEALS W/WIPER
W50D324CNF3F6	1.5" WET END - 316SS HEAD/CHECKS - CERAMIC COATED 316SS PLUNGER - FFKM SEALS
W50D324CNH3H6	1.5" WET END - 316SS HEAD/CHECKS - CERAMIC COATED 316SS PLUNGER - HNBR SEALS
W50D324CNQ3Q6	1.5" WET END - 316SS HEAD/CHECKS - CERAMIC COATED 316SS PLUNGER - FKM SEALS
W50DH06HNFHF6	3/8" WET END - C276 HEAD/CHECKS - C276 PLUNGER - FFKM SEALS W/WIPER - 316SS BOLTS
W50DH06HNFHH6	3/8" WET END - C276 HEAD/CHECKS - C276 PLUNGER - HNBR SEALS W/WIPER - 316SS BOLTS
W50DH06HNFHQ6	3/8" WET END - C276 HEAD/CHECKS - C276 PLUNGER - FKM SEALS W/WIPER - 316SS BOLTS
W50MH08HNFHF6	1/2" WET END - C276 HEAD/CHECKS - C276 PLUNGER - FFKM SEALS W/WIPER - 316SS BOLTS
W50MH08HNFHH6	1/2" WET END - C276 HEAD/CHECKS - C276 PLUNGER - HNBR SEALS W/WIPER - 316SS BOLTS
W50MH08HNFHQ6	1/2" WET END - C276 HEAD/CHECKS - C276 PLUNGER - FKM SEALS W/WIPER - 316SS BOLTS
W50MH12HNFHF6	3/4" WET END - C276 HEAD/CHECKS - C276 PLUNGER - FFKM SEALS W/WIPER - 316SS BOLTS
W50MH12HNFHH6	3/4" WET END - C276 HEAD/CHECKS - C276 PLUNGER - HNBR SEALS W/WIPER - 316SS BOLTS
W50MH12HNFHQ6	3/4" WET END - C276 HEAD/CHECKS - C276 PLUNGER - FKM SEALS W/WIPER - 316SS BOLTS
W50MH16HNFHF6	1" WET END - C276 HEAD/CHECKS - C276 PLUNGER - FFKM SEALS W/WIPER - 316SS BOLTS
W50MH16HNFHH6	1" WET END - C276 HEAD/CHECKS - C276 PLUNGER - HNBR SEALS W/WIPER - 316SS BOLTS
W50MH16HNFHQ6	1" WET END - C276 HEAD/CHECKS - C276 PLUNGER - FKM SEALS W/WIPER - 316SS BOLTS
W50DH24HNFHF6	1.5" WET END - C276 HEAD/CHECKS - C276 PLUNGER - FFKM SEALS - 316SS BOLTS
W50DH24HNFHH6	1.5" WET END - C276 HEAD/CHECKS - C276 PLUNGER - HNBR SEALS - 316SS BOLTS
W50DH24HNFHQ6	1.5" WET END - C276 HEAD/CHECKS - C276 PLUNGER - FKM SEALS - 316SS BOLTS



Please inquire with CheckPoint if you need an item that is not listed below.

<i>PART #</i>	<i>DESCRIPTION</i>
HEAD CONVERSION KIT (CONVERT THE INTERNALS OF A MODULAR HEAD FROM ONE PLUNGER SIZE TO ANOTHER)*	
*CONVERTING TO OR FROM A DEDICATED HEAD REQUIRES A COMPLETE WET END ASSEMBLY	
K50HCK08CNF	CONVERSION KIT - 1/2 IN - CER PLG KIT - SLEEVE - GLAND NUT - FFKM SEALS KIT
K50HCK08CNH	CONVERSION KIT - 1/2 IN - CER PLG KIT - SLEEVE - GLAND NUT - HNBR SEALS KIT
K50HCK08CNE	CONVERSION KIT - 1/2 IN - CER PLG KIT - SLEEVE - GLAND NUT - EPDM SEALS KIT
K50HCK08CNQ	CONVERSION KIT - 1/2 IN - CER PLG KIT - SLEEVE - GLAND NUT - FKM SEALS KIT
K50HCK12CNF	CONVERSION KIT - 3/4 IN - CER PLG KIT - SLEEVE - GLAND NUT - FFKM SEALS KIT
K50HCK12CNH	CONVERSION KIT - 3/4 IN - CER PLG KIT - SLEEVE - GLAND NUT - HNBR SEALS KIT
K50HCK12CNE	CONVERSION KIT - 3/4 IN - CER PLG KIT - SLEEVE - GLAND NUT - EPDM SEALS KIT
K50HCK12CNQ	CONVERSION KIT - 3/4 IN - CER PLG KIT - SLEEVE - GLAND NUT - FKM SEALS KIT
K50HCK16CNF	CONVERSION KIT - 1 IN - CER PLG KIT - SLEEVE - GLAND NUT - FFKM SEALS KIT
K50HCK16CNH	CONVERSION KIT - 1 IN - CER PLG KIT - SLEEVE - GLAND NUT - HNBR SEALS KIT
K50HCK16CNE	CONVERSION KIT - 1 IN - CER PLG KIT - SLEEVE - GLAND NUT - EPDM SEALS KIT
K50HCK16CNQ	CONVERSION KIT - 1 IN - CER PLG KIT - SLEEVE - GLAND NUT - FKM SEALS KIT

Series SLA Motors Order Guide



Please inquire with CheckPoint if you need an item that is not listed below.

PART #	DESCRIPTION
MOTORS	
NEMA, 115V/208-230V/1P/60Hz, 1725RPM Fixed Speed, EPFC, C1D1, Ta=40C, Continuous Duty, Outdoor Use, Vertical Shaft Down or Horizontal Position, No Feet	
EMA16F0050N-01	1/2HP, 56C
EMA16F0075N-01	3/4HP, 56C
EMA16F0100N-01	1HP, 56C
NEMA, 208-230V/460V/3P/60Hz, 1725RPM Fixed Speed, EPFC, C1D1, Ta=40C, Continuous Duty, Outdoor Use, Vertical Shaft Down or Horizontal Position, No Feet	
EMA36F0025N-01	1/4HP, 56C, EPNV
EMA36F0050N-01	1/2HP, 56C, EPFC
EMA36F0075N-01	3/4HP, 56C, EPFC
EMA36F0100N-01	1HP, 56C, EPFC
EMA36F0150N-01	1-1/2HP, 56C, EPFC
IEC, 220-240V/380-415V/50Hz, 3P, 1450RPM Fixed Speed, V1 Flange, Explosion Proof ATEX II 2G Ex db IIB T4 Gb, IP55, Ta -20C/+55C, Continuous Duty, Outdoor Use, Vertical Shaft Down or Horizontal Position, No Feet	
EMA35F0025I-01	1/4HP (0.19kW), IEC 71 V1
EMA35F0050I-01	1/2HP (0.37kW), IEC 80 V1
EMA35F0075I-01	3/4HP (0.55kW), IEC 80 V1
EMA35F0100I-01	1HP (0.75kW), IEC 90 V1
EMA35F0150I-01	1-1/2HP (1.10kW), IEC 90 V1
MOTOR FLANGE ADAPTER	
SLA0003-01	NEMA 56C OR 143/145TC
SLA0003-02	NEMA 182/184TC
SLA0003-06	IEC 071 B5/V1
SLA0003-03	IEC 080 B5/V1
SLA0003-04	IEC 090 B5/V1
SLA0003-05	IEC 100/112 B5/V1
SHAFT COUPLING ASSEMBLY (2x HUB + 1x SPIDER)	
CUPAAPM-E05-M19-R	TYPE A - 5/8" NEMA 56C SHAFT X 19MM PUMP SHAFT - SPIDER 98A RED
CUPAAPM-E07-M19-R	TYPE A - 7/8" NEMA 143/145TC SHAFT X 19MM PUMP SHAFT - SPIDER 98A RED
CUPBAPM-E09-M19-R	TYPE B - 1-1/8" NEMA 182/184TC SHAFT X 19MM PUMP SHAFT - SPIDER 98A RED
CUPAAPM-M14-M19-R	TYPE A - 14MM IEC 71 SHAFT X 19MM PUMP SHAFT - SPIDER 98A RED
CUPAAPM-M19-M19-R	TYPE A - 19MM IEC 80 SHAFT X 19MM PUMP SHAFT - SPIDER 98A RED
CUPAAPM-M19-M24-R	TYPE A - 24MM IEC 90 SHAFT X 19MM PUMP SHAFT - SPIDER 98A RED
CUPBAPM-M19-M28-R	TYPE B - 28MM IEC 100/112 SHAFT X 19MM PUMP SHAFT - SPIDER 98A RED
SHAFT COUPLING HUB (PARTS MUST BE THE SAME TYPE TO BE COMPATIBLE)	
CUPAHPM-E05	TYPE A - HUB - 5/8" NEMA 56C SHAFT
CUPAHPM-E07	TYPE A - HUB - 7/8" NEMA 143/145TC SHAFT
CUPBHPM-E09	TYPE B - HUB - 1-1/8" NEMA 182/184TC SHAFT
CUPAHPM-M14	TYPE A - HUB - 14MM IEC 71 SHAFT
CUPAHPM-M19	TYPE A - HUB - 19MM IEC 80 OR SLA PUMP SHAFT
CUPAHPM-M24	TYPE A - HUB - 24MM IEC 90 SHAFT
CUPBHPM-M28	TYPE B - HUB - 28MM IEC 100/112 SHAFT
CUPBHPM-M19	TYPE B - HUB - 19MM IEC 80 OR SLA PUMP SHAFT
SHAFT COUPLING SPIDER (PARTS MUST BE THE SAME TYPE TO BE COMPATIBLE)	
CUPAS-R	TYPE A - SPIDER 98A RED
CUPBS-R	TYPE B - SPIDER 98A RED