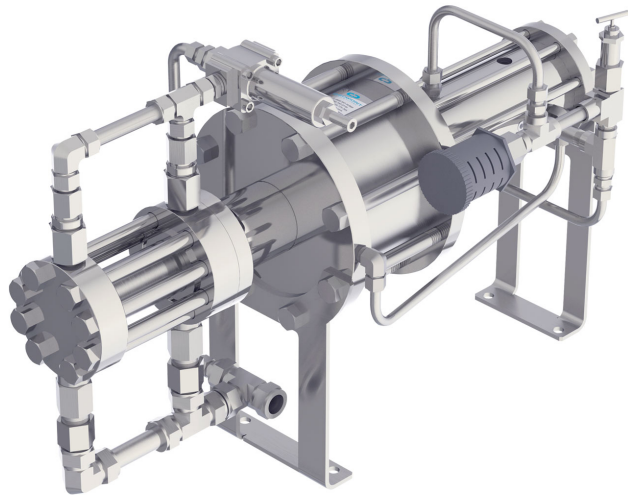


CheckPoint Pumps & Systems Pump Order Guide



CheckPoint Headquarters
21356 Marion Lane
Mandeville, Louisiana 70471
United States of America
+1 (504) 340-0770

CheckPoint UK
C2 Lombard Centre
Kirkhill Place, Kirkhill Industrial Estate
Dyce, Aberdeen AB21 0GU Scotland
+44 (0)1224 775205

CP Pumps & Systems FZE
Shed 2, Warehouses 7 & 8
RAK Technology Park | P.O. Box 54796
Ras Al Khaimah | UAE
+971 (4) 8806278

Series GX15 Order Guide



Build Part Number

1	2	3	4	5	6	7	8	9	10	11	12	13	14
---	---	---	---	---	---	---	---	---	----	----	----	----	----

A complete Series GX15 part number is 14 digits. For example, GX15G12Y3QLC34. Note that some codes are multiple digits.

DIGIT	CODE	CYLINDER DIAMETER
1-4	GX15	1.50 IN

DIGIT	CODE	MOTOR TYPE
5	G	GAS RECOVERY

DIGIT	CODE	STROKE LENGTH
6	1	1.00 IN

DIGIT	CODE	PLUNGER DIAMETER
7	2	1/4 IN

DIGIT	CODE	PLUNGER MATERIAL
8	Y	SOLID CERAMIC W/316SS PIN

DIGIT	CODE	HEAD MATERIAL
9	3	316 SS

DIGIT	CODE	PACKING MATERIAL
10-12	ALC	VITON/PEEK/CTFM
	FLC	FFKM/PEEK/CTFM
	HLC	HNBR/PEEK/CTFM
	QLC	FKM/PEEK/CTFM

DIGIT	CODE	CHECK BODY MATERIAL & TYPE
13	3	316SS BALL SUC / POPPET DIS

DIGIT	CODE	CHECK SEAL MATERIAL*
14	1	VITON
	4	FKM
	5	HNBR
	8	FFKM

*Always match the packing material selection.



Build Part Number

P 2 5	2	3	4	5	6	7	8	9	10	11	12
--------------	---	---	---	---	---	---	---	---	----	----	----

A complete Series 1250 part number can range from 12 to 17 digits, depending on the options selected. Condense the part number to eliminate blank digits. For example, P25B12C3DQ34 or P25G1HH5HHFLCH8HB.

DIGIT	CODE	CYLINDER DIAMETER
1	P25	2.50 IN

DIGIT	CODE	MOTOR TYPE
2	B	VENT TO ATMOSPHERE
	G	GAS RECOVERY
	S	SOLENOID ACTUATION

DIGIT	CODE	STROKE LENGTH
3	1	1.00 IN
	2	0.50 IN

DIGIT	CODE	PISTON / BOTTOM FLANGE MAT
4	H	HAST C276 PISTON
	HH	HAST C276 PISTON & BTM FLANGE
	BLANK	316SS PISTON & BOTTOM FLANGE

DIGIT	CODE	PLUNGER DIAMETER
5	1	1/8 IN
	6	3/16 IN
	2	1/4 IN
	3	3/8 IN
	5	1/2 IN

DIGIT	CODE	PLUNGER MATERIAL
6	C	CERAMIC COATED HASTELLOY
	3	S316
	D	DUPLEX 2205
	H	HASTELLOY C276
	T	TITANIUM
	Y	SOLID CERAMIC W/316SS PIN*

*Available in 1/4" & 3/8" plunger sizes only.

DIGIT	CODE	HEAD MATERIAL
7	3	316 SS
	D	DUPLEX 2205
	H	HASTELLOY C276
	K	KYNAR
	P	PVC
	T	TITANIUM

DIGIT	CODE	HEAD TYPE
8	D	DEDICATED HIGH PRESSURE*
	E	EXTREME VISCOSITY**
	BLANK	STANDARD MODULAR

* Dedicated High Pressure head available for 1/8", 3/16", & 1/4" plungers only.

** Series EV (Extreme Viscosity) head is only available in 1/2" size plunger.

DIGIT	CODE	PACKING MATERIAL*
9	ALC/A	VITON/PEEK/CTFM
	ELC/E	EPDM/PEEK/CTFM
	FLC/F	FFKM/PEEK/CTFM
	HLC/H	HNBR/PEEK/CTFM
	QLC/Q	FKM/PEEK/CTFM

*Use 3-digit code for modular head and 1-digit code for dedicated head.

DIGIT	CODE	CHECK BODY MATERIAL & TYPE
10	3	316SS POPPET*
	B	316SS BODY/HAST BALL/6KPSI MAX
	D	DUPLEX 2205 POPPET*
	H	HASTELLOY C276 POPPET*
	T	TITANIUM POPPET*

*1/4" HP heads feature ball suction and poppet discharge type check valves.

DIGIT	CODE	CHECK SEAL MATERIAL*
11	1	VITON
	4	FKM
	5	HNBR
	8	FFKM
	9	EPDM
	T	TEFLON (PTFE) - BALL ONLY

*Always match the packing material selection, except Teflon.

DIGIT	CODE	BOLTS (BOTTOM FLANGE & HEAD)
12	HB	HASTELLOY C276
	BLANK	316SS

NOTE
Options marked "CALL" may have extended lead times.



Build Part Number

P 5 0	2	3	4	5	6	7	8	9	10	11	12
--------------	---	---	---	---	---	---	---	---	----	----	----

A complete Series 1500 part number can range 13 to 18 digits, depending on options selected. Condense the part number to eliminate blank digits. For example, P50B108C3DQ34 or P50G1HH16HHFLCH8HB.

DIGIT	CODE	CYLINDER DIAMETER
1	P50	5.00 IN

DIGIT	CODE	OPTIONS
2	B	VENT TO ATMOSPHERE
	G	GAS RECOVERY
	S	SOLENOID ACTUATION

DIGIT	CODE	STROKE LENGTH
3	1	1.00 IN
	2	0.50 IN

DIGIT	CODE	PISTON / BOTTOM FLANGE MAT
4	H	HAST C276 PISTON
	HH	HAST C276 PISTON & BTM FLANGE
	BLANK	316SS PISTON & BOTTOM FLANGE

DIGIT	CODE	PLUNGER DIAMETER
5	06	3/8 IN - DEDICATED ONLY
	08	1/2 IN - STANDARD OR DEDICATED
	12	3/4 IN - STANDARD ONLY
	16	1 IN - STANDARD ONLY
	24	1.5 IN - DEDICATED ONLY

DIGIT	CODE	PLUNGER MATERIAL
6	C	CERAMIC COATED HASTELLOY*
	3	316SS
	D	DUPLEX 2205
	H	HASTELLOY C276
	T	TITANIUM

*1.5" plunger is ceramic coated S316.

DIGIT	CODE	HEAD MATERIAL
7	3	316 SS
	D	DUPLEX
	H	HASTELLOY C276
	K	KYNAR (NOT AVAILABLE FOR 1.5")
	P	PVC (NOT AVAILABLE FOR 1.5")
	T	TITANIUM

DIGIT	CODE	HEAD TYPE
8	D	DEDICATED
	E	EXTREME VISCOSITY*
	BLANK	STANDARD MODULAR

* Series EV (Extreme Viscosity) head is only available in 3/4" & 1" size plungers.

DIGIT	CODE	PACKING MATERIAL*
9	FLC/F	FFKM/PEEK/CTFM FOR 3/8"-1"
		FFKM/PEEK/CTFM FOR 1.5"
	HLC/H	HNBR/PEEK/CTFM FOR ALL
	QLC/Q	FKM/PEEK/CTFM FOR ALL

*Use 3-digit code for modular head and 1-digit code for dedicated head.

DIGIT	CODE	CHECK BODY MATERIAL & TYPE
10	3	316SS POPPET
	B	316SS BALL*
	D	DUPLEX 2205 POPPET
	H	HASTELLOY C276 POPPET
	T	TITANIUM POPPET

*Only available for 1/2"-1" heads. 6,000 PSIG pressure limit.

DIGIT	CODE	CHECK SEAL MATERIAL*
11	4	FKM
	5	HNBR
	8	FFKM

*Always match the packing material selection.

DIGIT	CODE	BOLTS (BOTTOM FLANGE & HEAD)
12	HB	HASTELLOY C276
	BLANK	316SS



Build Part Number

1	2	3	4	5	6	7	8	9
---	---	---	---	---	---	---	---	---

A complete Series 5400 part number is 9 digits. For example, P5412CNQ3. Note that some codes are multiple digits.

DIGIT	CODE	MOTOR TYPE
1-3	P54	5" CYL, GAS RECOVERY, 4" STROKE

DIGIT	CODE	PLUNGER DIAMETER & TYPE
4-5	08	1/2" SINGLE-ACTING
	12	3/4" DOUBLE-ACTING
	16	1" DOUBLE-ACTING
	28	1-3/4" DOUBLE-ACTING
	40	2-1/2" DOUBLE-ACTING

DIGIT	CODE	PLUNGER MATERIAL
6	C	CERAMIC COATED 316SS

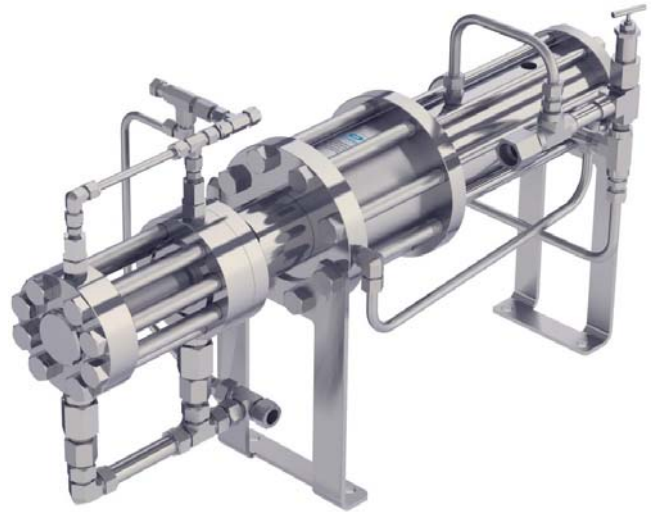
DIGIT	CODE	HEAD MATERIAL
7	6	SS316*
	N	NITRONIC-50**

* Available for 08 plunger code only.

** Available for 12, 16, 28, & 40 plunger codes only.

DIGIT	CODE	PACKING MATERIAL
8	A	VITON/PEEK/CTFM
	F	FFKM/PEEK/CTFM
	H	HNBR/PEEK/CTFM
	Q	FKM/PEEK/CTFM

DIGIT	CODE	CHECK BODY MATERIAL & TYPE
9	3	316SS POPPET



Series 6200 Order Guide



Build Part Number

1	2	3	4	5	6	7	8	9
---	---	---	---	---	---	---	---	---

A complete Series 6200 part number is 9 digits. For example, P6212NNQ3. Note that some codes are multiple digits.

DIGIT	CODE	MOTOR TYPE
1-3	P62	6" CYL, GAS RECOVERY, 2" STROKE

DIGIT	CODE	PLUNGER DIAMETER
4-5	12	3/4 IN DOUBLE-ACTING

DIGIT	CODE	PLUNGER MATERIAL
6	C	CERAMIC COATED 316SS
	H	HASTELLOY C276*
	N	NITRONIC-50

*Requires code H for digit 7 head material and digit 9 check body material.

DIGIT	CODE	HEAD MATERIAL
7	H	HASTELLOY C276
	N	NITRONIC-50

DIGIT	CODE	PACKING MATERIAL
8	A	VITON/PEEK/CTFM
	F	FFKM/PEEK/CTFM
	H	HNBR/PEEK/CTFM
	Q	FKM/PEEK/CTFM

DIGIT	CODE	CHECK BODY MATERIAL & TYPE
9	3	316SS POPPET
	H	HASTELLOY C276 POPPET



Series 8400 Order Guide



Build Part Number

1	2	3	4	5	6	7	8	9
---	---	---	---	---	---	---	---	---

A complete Series 8400 part number is 9 digits. For example, P8412CNQ3. Note that some codes are multiple digits.

DIGIT	CODE	MOTOR TYPE
1-3	P84	8" CYL, GAS RECOVERY, 4" STROKE

DIGIT	CODE	PLUNGER DIAMETER & TYPE
4-5	08	1/2" SINGLE-ACTING
	12	3/4" DOUBLE-ACTING
	16	1" DOUBLE-ACTING
	28	1-3/4" DOUBLE-ACTING
	40	2-1/2" DOUBLE-ACTING

DIGIT	CODE	PLUNGER MATERIAL
6	C	CERAMIC COATED 316SS

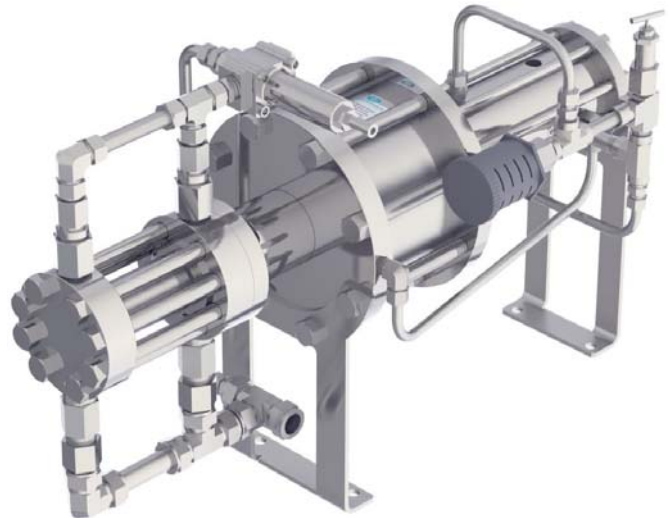
DIGIT	CODE	HEAD MATERIAL
7	6	SS316*
	N	NITRONIC-50**

* Available for 08 plunger code only.

** Available for 12, 16, 28, & 40 plunger codes only.

DIGIT	CODE	PACKING MATERIAL
8	A	VITON/PEEK/CTFM
	F	FFKM/PEEK/CTFM
	H	HNBR/PEEK/CTFM
	Q	FKM/PEEK/CTFM

DIGIT	CODE	CHECK BODY MATERIAL & TYPE
9	3	316SS POPPET





Build Part Number

F	A	3	4	5	-	7	8	9	10	11	12	13	14
---	---	---	---	---	---	---	---	---	----	----	----	----	----

A complete Series FXA part number is 11 or 15 digits depending on selected options. For example, FA3B--A2JC or FA9P2-C2TDC2TD. Note that some codes are multiple digits.

DIGIT	CODE	PUMP TYPE
1-2	FA	FIXED ECCENTRIC SIZE A

DIGIT	CODE	PUMP CONFIGURATION
3	3	SINGLE HEAD
	4	DUAL HEAD SIMULTANEOUS*
	9	DUAL HEAD WORKING + STANDBY**

*Dual head simultaneous is VFD control only.
 **Includes handwheel clutch to allow operator to engage one pump at a time.

DIGIT	CODE	GEARBOX REDUCER
4	A	ATEX 16 MM SHAFT - No Gear Reducer
	B	NEMA 145TC 13.18:1
	C	NEMA 145TC 28.88:1
	P	IEC 80B5 13.18:1 ATEX Cat.3G Zone 2
	Q	IEC 80B5 28.88:1
	R	IEC 90B5 13.18:1 ATEX Cat.3G Zone 2
	X	IEC SHAFT - No Gear Reducer
	Y	NO GEARBOX, INCLUDES SHAFT*
	Z	NEMA 5/8 SHAFT - No Gear Reducer

*Option Y only available for CheckPoint offices.

DIGIT	CODE	HYDRAULIC SPEED VARIATOR*
5	1	NEMA 145TC
	2	IEC 80B5 ATEX Cat.3G Zone 2
	3	IEC 90B5 ATEX Cat.3G Zone 2
	-	NO VARIATOR

*Variator control requires 13:1 gearbox and 1HP (0.75kW) motor.

DIGIT	CODE	SPECIAL
6	-	NONE

1 CONFIGURATION

DIGIT	CODE	HEAD SERIES & POSITION
7	A	1250 LEFT
	C	1500 LEFT

DIGIT	CODE	PLUNGER MATERIAL
8	1	316SS
	2	CERAMIC COATED HASTELLOY*
	3	DUPLEX 2205
	4	HASTELLOY C276
	5	TITANIUM
	6	SOLID CERAMIC**

* 1500 1.5" plunger is ceramic coated 316SS.
 ** Available for series 1250 head in 1/4" & 3/8" plunger sizes only.

DIGIT	CODE	HEAD DETAIL
9	A	1/8 1250 MODULAR
	C	1/8 1250 DEDICATED HP
	E	3/16 1250 MODULAR
	Y	3/16 1250 DEDICATED HP
	G	1/4 1250 MODULAR
	J	1/4 1250 DEDICATED HP
	K	3/8 1250 MODULAR
	M	1/2 1250 MODULAR
	P	1/2 1250 EXTREME VISCOSITY
	Q	3/8 1500 DEDICATED HP
	R	1/2 1500 MODULAR
	S	1/2 1500 DEDICATED HP
	T	3/4 1500 MODULAR
	U	3/4 1500 EXTREME VISCOSITY
	V	1 1500 MODULAR
	W	1 1500 EXTREME VISCOSITY
	X	1-1/2 1500 DEDICATED

DIGIT	CODE	HEAD & SEAL MATERIALS*
10	A	316SS VITON
	B	316SS HNBR
	C	316SS FKM
	D	316SS FFKM 1250
		316SS FFKM 1500 3/8"-1"
		316SS FFKM 1500 1.5"
	E	HAST VITON 1250
	F	HAST HNBR 1250
		HAST HNBR 1500
	G	HAST FKM 1250
		HAST FKM 1500
	H	HAST FFKM 1250
		HAST FFKM 1500 3/8"-1"
	J	HAST FFKM 1500 1.5"
		PVC VITON 1250
	K	PVC HNBR 1250
		PVC HNBR 1500 3/8"-1"***
	L	PVC FKM 1250
		PVC FKM 1500 3/8"-1"***
	M	PVC FFKM 1250
PVC FFKM 1500 3/8"-1"***		
N	Ti VITON	
P	Ti HNBR	
Q	Ti FKM	
R	Ti FFKM	
S	2205 VITON	
T	2205 HNBR	
U	2205 FKM	
V	2205 FFKM	

* Defines wetted materials only. Flange, plunger adapter, & bolts remain 316SS.
 ** PVC head with hastelloy check valves setup not available for 1500-1.5".

If pump configuration is single head, stop part number here.

PUMP HEAD 2 CONFIGURATION

Only continue if pump configuration is dual head.

DIGIT	CODE	HEAD SERIES & POSITION
11	B	1250 RIGHT
	D	1500 RIGHT

DIGIT	CODE	PLUNGER MATERIAL
12		SAME CODE OPTIONS AS DIGIT 8

DIGIT	CODE	HEAD DETAIL
13		SAME CODE OPTIONS AS DIGIT 9

DIGIT	CODE	HEAD & SEAL MATERIALS*
14		SAME CODE OPTIONS AS DIGIT 10

NOTE

VFD cannot be combined with variator control.
 VFD Benefits: Lower min flow, Higher max flow, Supports dual head simultaneous configuration, Only automation ready option, Additional electronic motor protections
 Variator Benefits: Local mechanical control; Reduced electrical hookup
MOTOR SOLD SEPARATELY
 *Refer to motor chart for power. Frame must be NEMA 56C with 7/8" shaft adapter, NEMA 143/145TC, or IEC 80B5. Variator can use fixed speed. VFD requires 35:1 constant torque (CT) variable speed, but inverter duty 1000:1 recommended.

Build Part Number

H	A	3	4	5	-	7	8	T	10	11	12	13	14
----------	----------	---	---	---	---	---	---	----------	----	----	----	----	----

A complete Series HDA part number is 10 or 14 digits depending on selected options. For example, HA3C1-G3TT or HA8P--G1TPG1TP. Note that some codes are multiple digits.

DIGIT	CODE	PUMP TYPE
1-2	HA	HYDRAULIC DIAPHRAGM SIZE A

DIGIT	CODE	PUMP CONFIGURATION
3	3	SINGLE HEAD
	4	DUAL HEAD SIMULTANEOUS*
	8	DUAL HEAD WORKING + STANDBY**

*Dual head simultaneous is VFD control only.

**Includes handwheel clutch to allow operator to engage one pump at a time.

DIGIT	CODE	GEARBOX REDUCER
4	B	NEMA 145TC 13.18:1
	C	NEMA 145TC 28.88:1
	P	IEC 80B5 13.18:1 ATEX Cat.3G Zone 2
	Q	IEC 80B5 28.88:1
	R	IEC 90B5 13.18:1 ATEX Cat.3G Zone 2
Y	NO GEARBOX, INCLUDES SHAFT*	

*Option Y only available for CheckPoint offices.

DIGIT	CODE	HYDRAULIC SPEED VARIATOR*
5	1	NEMA 145TC
	2	IEC 80B5 ATEX Cat.3G Zone 2
	3	IEC 90B5 ATEX Cat.3G Zone 2
	-	NO VARIATOR

*Variator control requires 13:1 gearbox and 1HP (0.75kW) motor.

DIGIT	CODE	SPECIAL
6	-	NONE

PUMP HEAD 1 CONFIGURATION

DIGIT	CODE	PLGR SIZE & MATERIAL / BUSH MAT
7	G	10MM CERAMIC CERAMIC
	H	10MM CERAMIC STEEL
	I	10MM STEEL STEEL
	J	10MM STEEL CERAMIC

DIGIT	CODE	WET DIAPHRAGM/SEAL MATERIAL
8	1	316SS/FFKM
	2	316SS/HNBR
	3	316SS/FFKM

DIGIT	CODE	IRV STATUS INDICATOR
9	T	TATTLETALE

DIGIT	CODE	DIAPHRAGM RUPTURE INDICATOR
10	T	TATTLETALE
	G	PRESSURE GAUGE
	P	PRESSURE SENSOR 4-20mA C1D1
	Q	1/2" MNPT PORT FOR CUST DEVICE

If pump configuration is single head, stop part number here.

PUMP HEAD 2 CONFIGURATION

Only continue if pump configuration is dual head.

DIGIT	CODE	PLGR SIZE & MATERIAL / BUSH MAT
11	G	10MM CERAMIC CERAMIC
	H	10MM CERAMIC STEEL
	I	10MM STEEL STEEL
	J	10MM STEEL CERAMIC

DIGIT	CODE	WET DIAPHRAGM/SEAL MATERIAL
12	1	316SS/FFKM
	2	316SS/HNBR
	3	316SS/FFKM

DIGIT	CODE	IRV STATUS INDICATOR
13	T	TATTLETALE

DIGIT	CODE	DIAPHRAGM RUPTURE INDICATOR
14	T	TATTLETALE
	G	PRESSURE GAUGE
	P	PRESSURE SENSOR 4-20mA C1D1
	Q	1/2" MNPT PORT FOR CUST DEVICE

NOTE

VFD cannot be combined with variator control.

VFD Benefits: Lower min flow, Higher max flow, Supports dual head simultaneous configuration, Only automation ready option, Additional electronic motor protections

Variator Benefits: Local mechanical control; Reduced electrical hookup

Refer to motor chart for power. Frame must be NEMA 56C with 7/8" shaft adapter, NEMA 143/145TC, or IEC 80B5. Variator can use fixed speed. VFD requires 35:1 constant torque (CT) variable speed, but inverter duty 1000:1 recommended.



Series FXS Order Guide



Build Part Number

F	S	3	4	5	6	7	8	9	10	11	12
----------	----------	---	---	---	---	---	---	---	----	----	----

A complete Series FXS part number is 8 or 12 digits depending on selected options. For example, FS1BDA2KC or FS2AA2JDA2JD. Note that some codes are multiple digits.

DIGIT	CODE	PUMP TYPE
1-2	FS	FIXED ECCENTRIC SOLAR OPTIMIZED

DIGIT	CODE	PUMP CONFIGURATION
3	1	SINGLE HEAD
	2	DUAL HEAD SIMULTANEOUS*

*Dual head simultaneous does not allow independent rate adjustment per head.

DIGIT	CODE	MOTOR
4	A	12VDC, VARIABLE SPEED 6-67 RPM, Ta 40°C, 0.20HP, 150 LB-IN, C1D2, 30FT #12/2C, QUICK CONNECTS FOR MANUAL HAND CONTROL
	B	12VDC, VARIABLE SPEED 6-67 RPM, Ta 40°C, 0.20HP, 150 LB-IN, C1D2, 10FT #14/7C, FLYING LEADS FOR AUTOMATED CONTROL

PUMP HEAD 1 CONFIGURATION

DIGIT	CODE	HEAD SERIES & POSITION
5	A	1250 LEFT
	C	1500 LEFT

DIGIT	CODE	PLUNGER MATERIAL
6	1	316SS
	2	CERAMIC COATED HASTELLOY*
	3	DUPLEX 2205
	4	HASTELLOY C276
	5	TITANIUM
	6	SOLID CERAMIC**

* 1500 1.5" plunger is ceramic coated 316SS.

** Available for series 1250 head in 1/4" & 3/8" plunger sizes only.

DIGIT	CODE	HEAD DETAIL
7	A	1/8 1250 MODULAR
	C	1/8 1250 DEDICATED HP
	E	3/16 1250 MODULAR
	Y	3/16 1250 DEDICATED HP
	G	1/4 1250 MODULAR
	J	1/4 1250 DEDICATED HP
	K	3/8 1250 MODULAR
	M	1/2 1250 MODULAR
	P	1/2 1250 EXTREME VISCOSITY
	Q	3/8 1500 DEDICATED HP
	R	1/2 1500 MODULAR
	S	1/2 1500 DEDICATED HP
	T	3/4 1500 MODULAR
	U	3/4 1500 EXTREME VISCOSITY
	V	1 1500 MODULAR
	W	1 1500 EXTREME VISCOSITY
	X	1-1/2 1500 DEDICATED

DIGIT	CODE	HEAD & SEAL MATERIALS*
8	A	316SS VITON
	B	316SS HNBR
	C	316SS FKM
	D	316SS FFKM 1250
		316SS FFKM 1500 3/8"-1"
		316SS FFKM 1500 1.5"
	E	HAST VITON 1250
	F	HAST HNBR 1250
		HAST HNBR 1500
	G	HAST FKM 1250
		HAST FKM 1500
	H	HAST FFKM 1250
		HAST FFKM 1500 3/8"-1"
		HAST FFKM 1500 1.5"
	J	PVC VITON 1250
	K	PVC HNBR 1250
		PVC HNBR 1500 3/8"-1"***
	L	PVC FKM 1250
		PVC FKM 1500 3/8"-1"***
	M	PVC FFKM 1250
PVC FFKM 1500 3/8"-1"***		
N	Ti VITON	
P	Ti HNBR	
Q	Ti FKM	
R	Ti FFKM	
S	2205 VITON	
T	2205 HNBR	
U	2205 FKM	
V	2205 FFKM	

* Defines wetted materials only. Flange, plunger adapter, & bolts remain 316SS.

** PVC head with hastelloy check valves setup not available for 1500-1.5".

If pump configuration is single head, stop part number here.



Build Part Number Continued...

PUMP HEAD 2 CONFIGURATION

Only continue if pump configuration is dual head.

DIGIT	CODE	HEAD SERIES & POSITION
9	A	1250 LEFT*
	C	1500 LEFT*

* FXS head 2 is stacked on head 1 on left side and is furthest from the motor.

DIGIT	CODE	PLUNGER MATERIAL
10		SAME CODE OPTIONS AS DIGIT 6

DIGIT	CODE	HEAD DETAIL
11		SAME CODE OPTIONS AS DIGIT 7

DIGIT	CODE	HEAD & SEAL MATERIALS*
12		SAME CODE OPTIONS AS DIGIT 8



Series S Order Guide



Build Part Number

1	2	3	4	5	6	7	8	9	10	11	12
---	---	---	---	---	---	---	---	---	----	----	----

A complete Series S part number is 12 digits. For example, S1X072SSTA10. Note that some codes are multiple digits.

DIGIT	CODE	PUMP TYPE
1-2	S1	SERIES S1 ELECTRIC SOLENOID DRIVEN DIAPHRAGM

DIGIT	CODE	FLOW RATE / DISCHARGE PRESSURE / DIAPHRAGM DIAMETER
3-6	X041	0.42 GPH (1.58 LPH) / 140 PSI (9.6 BAR) / 0.5" DIAPHRAGM *DC POWER CONNECTION ONLY
	X061	0.63 GPH (2.37 LPH) / 150 PSI (10.3 BAR) / 0.5" DIAPHRAGM
	X072	0.71 GPH (2.68 LPH) / 250 PSI (17.2 BAR) / 0.5" DIAPHRAGM
	X121	1.25 GPH (4.73 LPH) / 110 PSI (7.5 BAR) / 0.9" DIAPHRAGM *PVDF HEAD ONLY

DIGIT	CODE	HEAD & CHECK BODY MATERIAL
7	P	PVDF HEAD & CHECKS, 1/4" MNPT, WITH BLEED
	S	SS316 HEAD & CHECKS, 1/4" MNPT, NO BLEED

DIGIT	CODE	CHECK VALVE TYPE
8	C	BALL, CERAMIC *PVDF HEAD ONLY
	S	BALL, SS316 *SS316 HEAD ONLY

DIGIT	CODE	CHECK VALVE SEAL MATERIAL
9	T	TEFLON

DIGIT	CODE	POWER CONNECTION
10-11	A1	120VAC, FUSE, USA PLUG, 5.5 FT
	A2	240VAC, FUSE, USA PLUG, 5.5 FT
	D1	12VDC, NO FUSE, ON/OFF SWITCH *FLOW RATE CODE MUST BE X041 ONLY

DIGIT	CODE	SPECIAL
12	0	NONE



Series ATP Single Drive Order Guide



Build Part Number

A	T	P	3	5	6	7	-	9	10	11	12	13	14
-	16	17	18	19	20	21							

A complete Series ATP part number is 14 or 21 digits depending on selected options. For example, ATP11DL-A308RH or ATP12CL-A306RQ-A304RF. Note that some codes are multiple digits.

DIGIT	CODE	SERIES DRIVE TYPE
1-2	AT	ADJUSTABLE TRAVEL

DIGIT	CODE	HEAD TECHNOLOGY
3	P	PLUNGER

DIGIT	CODE	DRIVE STYLE
4	1	STYLE 1 - <i>*DISCONTINUED*</i>
	3	STYLE 3 - EXTERNAL STROKE LENGTH ADJ.

DIGIT	CODE	NUMBER OF HEADS
5	1	1 HEAD
	2	2 HEADS

DIGIT	CODE	MOTOR
6	C	12VDC, VARIABLE SPEED 6-67 RPM, Ta 40°C, 0.20HP, 150 LB-IN, C1D2, 30FT #12/2C, QUICK CONNECTS*, IP65, 9 O'CLOCK SHAFT FOR MANUAL HAND CONTROL
	D	12VDC, VARIABLE SPEED 6-67 RPM, Ta 40°C, 0.20HP, 150 LB-IN, C1D2, 10FT #14/7C, FLYING LEADS IP65, 9 O'CLOCK SHAFT FOR AUTOMATED CONTROL
	J	115VAC/1PH/60HZ, SINGLE SPEED, 60 RPM, Ta 40°C, 0.14HP, 150 LB-IN, C1D2, NO CABLE INCLUDED 9 O'CLOCK SHAFT FOR MANUAL HAND CONTROL
	K	115VAC/1PH/60HZ, SINGLE SPEED, 60 RPM, Ta 40°C, 0.14HP, 150 LB-IN, C1D2, 30FT #14/3C NEMA PLUG* 9 O'CLOCK SHAFT FOR MANUAL HAND CONTROL

* Quick connect or plug end is unclassified and must be installed in a safe zone.

DIGIT	CODE	MOUNT
7	L	LEGS, 20" HEIGHT
	S	FLOOR STAND

PUMP HEAD 1 CONFIGURATION

DIGIT	CODE	HEAD STYLE
9	A	STYLE A

DIGIT	CODE	HEAD / CHECK BODY MATERIAL
10	3	S316

DIGIT	CODE	PLUNGER DIAMETER
11-12	04	1/4"
	06	3/8"
	08	1/2"

DIGIT	CODE	PLUNGER MATERIAL
13	Y	CERAMIC

DIGIT	CODE	WETTED SEAL MATERIAL
14	F	FFKM
	H	HNBR
	Q	FKM

If pump configuration is single head, stop part number here.

PUMP HEAD 2 CONFIGURATION

Only continue if pump configuration is dual head.

DIGIT	CODE	HEAD STYLE
16	A	STYLE A

DIGIT	CODE	HEAD / CHECK BODY MATERIAL
17	3	S316

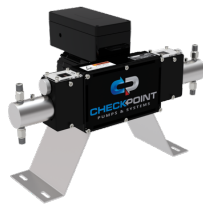
DIGIT	CODE	PLUNGER DIAMETER
18-19	04	1/4"
	06	3/8"
	08	1/2"

DIGIT	CODE	PLUNGER MATERIAL
20	Y	CERAMIC

DIGIT	CODE	WETTED SEAL MATERIAL
21	F	FFKM
	H	HNBR
	Q	FKM

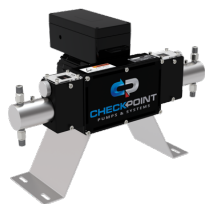


Series ATP3 Parts Order Guide



PART#	DESCRIPTION
KIT MISCELLANEOUS	
ATP1KBA-A3	KIT BLEED ASSY - BLEED SCREW, SPRING, BALL
ATP1KLA-A3	KIT LEG ASSY - 1 x LEG, 2 X BOLTS, 2 X NUTS
ATPMIT-01	MOTOR INSTALLATION TOOL
KIT HEAD CONVERSION: KATHCK##Y3# (PUMP ORDER GUIDE DIGIT 9-14)	
KATHCK04Y3F	ATP3 HEAD CONVERSION KIT - 1/4 IN - CER PLG - FFKM SEALS - INCLUDES: 316SS GLAND NUT/SLEEVE - CER PLUNGER - NON-ADJUSTABLE SEAL
KATHCK04Y3H	ATP3 HEAD CONVERSION KIT - 1/4 IN - CER PLG - HNBR SEALS - INCLUDES: 316SS GLAND NUT/SLEEVE - CER PLUNGER - NON-ADJUSTABLE SEAL
KATHCK04Y3Q	ATP3 HEAD CONVERSION KIT - 1/4 IN - CER PLG - FKM SEALS - INCLUDES: 316SS GLAND NUT/SLEEVE - CER PLUNGER - NON-ADJUSTABLE SEAL
KATHCK06Y3F	ATP3 HEAD CONVERSION KIT - 3/8 IN - CER PLG - FFKM SEALS - INCLUDES: 316SS GLAND NUT/SLEEVE - CER PLUNGER - NON-ADJUSTABLE SEAL
KATHCK06Y3H	ATP3 HEAD CONVERSION KIT - 3/8 IN - CER PLG - HNBR SEALS - INCLUDES: 316SS GLAND NUT/SLEEVE - CER PLUNGER - NON-ADJUSTABLE SEAL
KATHCK06Y3Q	ATP3 HEAD CONVERSION KIT - 3/8 IN - CER PLG - FKM SEALS - INCLUDES: 316SS GLAND NUT/SLEEVE - CER PLUNGER - NON-ADJUSTABLE SEAL
KATHCK08Y3F	ATP3 HEAD CONVERSION KIT - 1/2 IN - CER PLG - FFKM SEALS - INCLUDES: 316SS GLAND NUT - CER PLUNGER - NON-ADJUSTABLE SEAL
KATHCK08Y3H	ATP3 HEAD CONVERSION KIT - 1/2 IN - CER PLG - HNBR SEALS - INCLUDES: 316SS GLAND NUT - CER PLUNGER - NON-ADJUSTABLE SEAL
KATHCK08Y3Q	ATP3 HEAD CONVERSION KIT - 1/2 IN - CER PLG - FKM SEALS - INCLUDES: 316SS GLAND NUT - CER PLUNGER - NON-ADJUSTABLE SEAL
KIT ADD SECOND HEAD: KATSHK##Y3# (PUMP ORDER GUIDE DIGIT 9-14)	
KATSHK04Y3F	ATP3 ADD SECOND HEAD KIT - 1/4 IN 316SS HEAD - CER PLUNGER - FFKM SEALS - ADJUSTMENT ASSEMBLY
KATSHK04Y3H	ATP3 ADD SECOND HEAD KIT - 1/4 IN 316SS HEAD - CER PLUNGER - HNBR SEALS - ADJUSTMENT ASSEMBLY
KATSHK04Y3Q	ATP3 ADD SECOND HEAD KIT - 1/4 IN 316SS HEAD - CER PLUNGER - FKM SEALS - ADJUSTMENT ASSEMBLY
KATSHK06Y3F	ATP3 ADD SECOND HEAD KIT - 3/8 IN 316SS HEAD - CER PLUNGER - FFKM SEALS - ADJUSTMENT ASSEMBLY
KATSHK06Y3H	ATP3 ADD SECOND HEAD KIT - 3/8 IN 316SS HEAD - CER PLUNGER - HNBR SEALS - ADJUSTMENT ASSEMBLY
KATSHK06Y3Q	ATP3 ADD SECOND HEAD KIT - 3/8 IN 316SS HEAD - CER PLUNGER - FKM SEALS - ADJUSTMENT ASSEMBLY
KATSHK08Y3F	ATP3 ADD SECOND HEAD KIT - 1/2 IN 316SS HEAD - CER PLUNGER - FFKM SEALS - ADJUSTMENT ASSEMBLY
KATSHK08Y3H	ATP3 ADD SECOND HEAD KIT - 1/2 IN 316SS HEAD - CER PLUNGER - HNBR SEALS - ADJUSTMENT ASSEMBLY
KATSHK08Y3Q	ATP3 ADD SECOND HEAD KIT - 1/2 IN 316SS HEAD - CER PLUNGER - FKM SEALS - ADJUSTMENT ASSEMBLY
KIT HEAD REBUILD: KATHRK##N# (PUMP ORDER GUIDE DIGIT 9,11-12,14)	
KATHRK04NF	ATP3 HEAD REBUILD KIT - 1/4 IN - FFKM - INCLUDES: PLUNGER SEAL KIT, CHECK KITS
KATHRK04NH	ATP3 HEAD REBUILD KIT - 1/4 IN - HNBR - INCLUDES: PLUNGER SEAL KIT, CHECK KITS
KATHRK04NQ	ATP3 HEAD REBUILD KIT - 1/4 IN - FKM - INCLUDES: PLUNGER SEAL KIT, CHECK KITS
KATHRK06NF	ATP3 HEAD REBUILD KIT - 3/8 IN - FFKM - INCLUDES: PLUNGER SEAL KIT, CHECK KITS
KATHRK06NH	ATP3 HEAD REBUILD KIT - 3/8 IN - HNBR - INCLUDES: PLUNGER SEAL KIT, CHECK KITS
KATHRK06NQ	ATP3 HEAD REBUILD KIT - 3/8 IN - FKM - INCLUDES: PLUNGER SEAL KIT, CHECK KITS
KATHRK08NF	ATP3 HEAD REBUILD KIT - 1/2 IN - FFKM - INCLUDES: PLUNGER SEAL KIT, CHECK KITS
KATHRK08NH	ATP3 HEAD REBUILD KIT - 1/2 IN - HNBR - INCLUDES: PLUNGER SEAL KIT, CHECK KITS
KATHRK08NQ	ATP3 HEAD REBUILD KIT - 1/2 IN - FKM - INCLUDES: PLUNGER SEAL KIT, CHECK KITS
KIT PLUNGER: KATPLRU## (PUMP ORDER GUIDE DIGIT 11-13)	
KATPLRCU04	1/4 PLUNGER REPL KIT - CERAMIC
KATPLRCU06	3/8 PLUNGER REPL KIT - CERAMIC
KATPLRCU08	1/2 PLUNGER REPL KIT - CERAMIC
SUCTION AND DISCHARGE CHECK VALVE (PUMP ORDER GUIDE DIGIT 14)	
CFM04S6-B00	CHECK VALVE ASSY - 1/4 MNPT - 1PC FAILSAFE BALL CHECK - CERAMIC BALL - 1 PSIG SPRING - 316SS - 1250/ATP
KIT SUCTION AND DISCHARGE CHECK VALVE REBUILD (PUMP ORDER GUIDE DIGIT 14)	
KFM04S6-B00	KIT SUCTION CHECK REBUILD, CERAMIC BALL, VITON O-RING, SPRING

Series ATP3 Parts Order Guide



PART#	DESCRIPTION
MOTOR (CORRESPONDS TO PUMP ORDER GUIDE DIGIT 6)	
SOLR0009-307M	OPT C: 12VDC, VARIABLE SPEED, 6-67 RPM, Ta 40C, 0.20HP, 150 LB-IN, C1D2, 30FT #12/2C, UNCLASSIFIED QUICK CONNECTS, IP65, 9 O'CLOCK SHAFT, FOR MANUAL HAND CONTROL
SOLR0009-307A	OPT D: 12VDC, VARIABLE SPEED 6-67 RPM, Ta 40C, 0.20HP, 150 LB-IN, C1D2, 10FT #14/7C, FLYING LEADS, IP65, 9 O'CLOCK SHAFT, FOR AUTOMATED CONTROL
EMACFS115V60H1P0020-01	OPT J: 115VAC/1PH/60HZ, SINGLE SPEED, 60 RPM, Ta 40C, 0.14HP, 150 LB-IN, C1D2, NO CABLE INCLUDED, 9 O'CLOCK SHAFT, FOR MANUAL HAND CONTROL
EMACFS115V60H1P0020-02	OPT K: 115VAC/1PH/60HZ, SINGLE SPEED, 60 RPM, Ta 40C, 0.14HP, 150 LB-IN, C1D2, 30FT #14/3C UNCLASSIFIED NEMA PLUG, 9 O'CLOCK SHAFT, FOR MANUAL HAND CONTROL



PART #	DESCRIPTION
KIT MISCELLANEOUS	
AT1CAR	CARRIAGE ASSEMBLY
AT1ADJ	ADJUSTMENT RETAINER ASSEMBLY, INCLUDES RETAINER BLOCK, 2 MOUNT BOLTS, 1 TENSION BOLT
ATP1KBA-A3	KIT BLEED ASSY - BLEED SCREW, SPRING, BALL
ATP1KLA-A3	KIT LEG ASSY - 1 x LEG, 2 X BOLTS, 2 X NUTS
ATPMIT-01	MOTOR INSTALLATION TOOL
KIT HEAD CONVERSION: ATP1KHC-A3#### (PUMP ORDER GUIDE DIGIT 9-14)	
ATP1KHC-A3047A	KIT HEAD CONVERSION, 1/4" 316SS HEAD, 1/4" 17-4 PLUNGER, VITON SEALS
ATP1KHC-A3047F	KIT HEAD CONVERSION, 1/4" 316SS HEAD, 1/4" 17-4 PLUNGER, FFKM SEALS
ATP1KHC-A3047H	KIT HEAD CONVERSION, 1/4" 316SS HEAD, 1/4" 17-4 PLUNGER, HNBR SEALS
ATP1KHC-A3047Q	KIT HEAD CONVERSION, 1/4" 316SS HEAD, 1/4" 17-4 PLUNGER, FKM SEALS
ATP1KHC-A3067A	KIT HEAD CONVERSION, 3/8" 316SS HEAD, 3/8" 17-4 PLUNGER, VITON SEALS
ATP1KHC-A3067F	KIT HEAD CONVERSION, 3/8" 316SS HEAD, 3/8" 17-4 PLUNGER, FFKM SEALS
ATP1KHC-A3067H	KIT HEAD CONVERSION, 3/8" 316SS HEAD, 3/8" 17-4 PLUNGER, HNBR SEALS
ATP1KHC-A3067Q	KIT HEAD CONVERSION, 3/8" 316SS HEAD, 3/8" 17-4 PLUNGER, FKM SEALS
ATP1KHC-A3087A	KIT HEAD CONVERSION, 1/2" 316SS HEAD, 1/2" 17-4 PLUNGER, VITON SEALS
ATP1KHC-A3087F	KIT HEAD CONVERSION, 1/2" 316SS HEAD, 1/2" 17-4 PLUNGER, FFKM SEALS
ATP1KHC-A3087H	KIT HEAD CONVERSION, 1/2" 316SS HEAD, 1/2" 17-4 PLUNGER, HNBR SEALS
ATP1KHC-A3087Q	KIT HEAD CONVERSION, 1/2" 316SS HEAD, 1/2" 17-4 PLUNGER, FKM SEALS
ATP1KHC-A304YA	KIT HEAD CONVERSION, 1/4" 316SS HEAD, 1/4" CERAMIC PLUNGER, VITON SEALS
ATP1KHC-A304YF	KIT HEAD CONVERSION, 1/4" 316SS HEAD, 1/4" CERAMIC PLUNGER, FFKM SEALS
ATP1KHC-A304YH	KIT HEAD CONVERSION, 1/4" 316SS HEAD, 1/4" CERAMIC PLUNGER, HNBR SEALS
ATP1KHC-A304YQ	KIT HEAD CONVERSION, 1/4" 316SS HEAD, 1/4" CERAMIC PLUNGER, FKM SEALS
ATP1KHC-A306YA	KIT HEAD CONVERSION, 3/8" 316SS HEAD, 3/8" CERAMIC PLUNGER, VITON SEALS
ATP1KHC-A306YF	KIT HEAD CONVERSION, 3/8" 316SS HEAD, 3/8" CERAMIC PLUNGER, FFKM SEALS
ATP1KHC-A306YH	KIT HEAD CONVERSION, 3/8" 316SS HEAD, 3/8" CERAMIC PLUNGER, HNBR SEALS
ATP1KHC-A306YQ	KIT HEAD CONVERSION, 3/8" 316SS HEAD, 3/8" CERAMIC PLUNGER, FKM SEALS
ATP1KHC-A308YA	KIT HEAD CONVERSION, 1/2" 316SS HEAD, 1/2" CERAMIC PLUNGER, VITON SEALS
ATP1KHC-A308YF	KIT HEAD CONVERSION, 1/2" 316SS HEAD, 1/2" CERAMIC PLUNGER, FFKM SEALS
ATP1KHC-A308YH	KIT HEAD CONVERSION, 1/2" 316SS HEAD, 1/2" CERMAIC PLUNGER, HNBR SEALS
ATP1KHC-A308YQ	KIT HEAD CONVERSION, 1/2" 316SS HEAD, 1/2" CERAMIC PLUNGER, FKM SEALS
KIT ADD SECOND HEAD: ATP1KSH-A3#### (PUMP ORDER GUIDE DIGIT 9-14)	
ATP1KSH-A3047A	KIT ADD SECOND HEAD, 1/4" 316SS HEAD, 1/4" 17-4 PLUNGER, 2 X 316SS CHECK VALVES, VITON SEALS, ADJ RETAINER ASSY
ATP1KSH-A3047F	KIT ADD SECOND HEAD, 1/4" 316SS HEAD, 1/4" 17-4 PLUNGER, 2 X 316SS CHECK VALVES, FFKM SEALS, ADJ RETAINER ASSY
ATP1KSH-A3047H	KIT ADD SECOND HEAD, 1/4" 316SS HEAD, 1/4" 17-4 PLUNGER, 2 X 316SS CHECK VALVES, HNBR SEALS, ADJ RETAINER ASSY
ATP1KSH-A3047Q	KIT ADD SECOND HEAD, 1/4" 316SS HEAD, 1/4" 17-4 PLUNGER, 2 X 316SS CHECK VALVES, FKM SEALS, ADJ RETAINER ASSY
ATP1KSH-A3067A	KIT ADD SECOND HEAD, 3/8" 316SS HEAD, 3/8" 17-4 PLUNGER, 2 X 316SS CHECK VALVES, VITON SEALS, ADJ RETAINER ASSY
ATP1KSH-A3067F	KIT ADD SECOND HEAD, 3/8" 316SS HEAD, 3/8" 17-4 PLUNGER, 2 X 316SS CHECK VALVES, FFKM SEALS, ADJ RETAINER ASSY
ATP1KSH-A3067H	KIT ADD SECOND HEAD, 3/8" 316SS HEAD, 3/8" 17-4 PLUNGER, 2 X 316SS CHECK VALVES, HNBR SEALS, ADJ RETAINER ASSY
ATP1KSH-A3067Q	KIT ADD SECOND HEAD, 3/8" 316SS HEAD, 3/8" 17-4 PLUNGER, 2 X 316SS CHECK VALVES, FKM SEALS, ADJ RETAINER ASSY
ATP1KSH-A3087A	KIT ADD SECOND HEAD, 1/2" 316SS HEAD, 1/2" 17-4 PLUNGER, 2 X 316SS CHECK VALVES, VITON SEALS, ADJ RETAINER ASSY
ATP1KSH-A3087F	KIT ADD SECOND HEAD, 1/2" 316SS HEAD, 1/2" 17-4 PLUNGER, 2 X 316SS CHECK VALVES, FFKM SEALS, ADJ RETAINER ASSY
ATP1KSH-A3087H	KIT ADD SECOND HEAD, 1/2" 316SS HEAD, 1/2" 17-4 PLUNGER, 2 X 316SS CHECK VALVES, HNBR SEALS, ADJ RETAINER ASSY
ATP1KSH-A3087Q	KIT ADD SECOND HEAD, 1/2" 316SS HEAD, 1/2" 17-4 PLUNGER, 2 X 316SS CHECK VALVES, FKM SEALS, ADJ RETAINER ASSY
ATP1KSH-A304YA	KIT ADD SECOND HEAD, 1/4" 316SS HEAD, 1/4" CERAMIC PLUNGER, 2 X 316SS CHECK VALVES, VITON SEALS, ADJ RETAINER ASSY
ATP1KSH-A304YF	KIT ADD SECOND HEAD, 1/4" 316SS HEAD, 1/4" CERAMIC PLUNGER, 2 X 316SS CHECK VALVES, FFKM SEALS, ADJ RETAINER ASSY



PART #	DESCRIPTION
ATP1KSH-A304YH	KIT ADD SECOND HEAD, 1/4" 316SS HEAD, 1/4" CERAMIC PLUNGER, 2 X 316SS CHECK VALVES, HNBR SEALS, ADJ RETAINER ASSY
ATP1KSH-A304YQ	KIT ADD SECOND HEAD, 1/4" 316SS HEAD, 1/4" CERAMIC PLUNGER, 2 X 316SS CHECK VALVES, FKM SEALS, ADJ RETAINER ASSY
ATP1KSH-A306YA	KIT ADD SECOND HEAD, 3/8" 316SS HEAD, 3/8" CERAMIC PLUNGER, 2 X 316SS CHECK VALVES, VITON SEALS, ADJ RETAINER ASSY
ATP1KSH-A306YF	KIT ADD SECOND HEAD, 3/8" 316SS HEAD, 3/8" CERAMIC PLUNGER, 2 X 316SS CHECK VALVES, FFKM SEALS, ADJ RETAINER ASSY
ATP1KSH-A306YH	KIT ADD SECOND HEAD, 3/8" 316SS HEAD, 3/8" CERAMIC PLUNGER, 2 X 316SS CHECK VALVES, HNBR SEALS, ADJ RETAINER ASSY
ATP1KSH-A306YQ	KIT ADD SECOND HEAD, 3/8" 316SS HEAD, 3/8" CERAMIC PLUNGER, 2 X 316SS CHECK VALVES, FKM SEALS, ADJ RETAINER ASSY
ATP1KSH-A308YA	KIT ADD SECOND HEAD, 1/2" 316SS HEAD, 1/2" CERAMIC PLUNGER, 2 X 316SS CHECK VALVES, VITON SEALS, ADJ RETAINER ASSY
ATP1KSH-A308YF	KIT ADD SECOND HEAD, 1/2" 316SS HEAD, 1/2" CERAMIC PLUNGER, 2 X 316SS CHECK VALVES, FFKM SEALS, ADJ RETAINER ASSY
ATP1KSH-A308YH	KIT ADD SECOND HEAD, 1/2" 316SS HEAD, 1/2" CERAMIC PLUNGER, 2 X 316SS CHECK VALVES, HNBR SEALS, ADJ RETAINER ASSY
ATP1KSH-A308YQ	KIT ADD SECOND HEAD, 1/2" 316SS HEAD, 1/2" CERAMIC PLUNGER, 2 X 316SS CHECK VALVES, FKM SEALS, ADJ RETAINER ASSY



PART #	DESCRIPTION
KIT HEAD REBUILD: ATP1KHR-A### (PUMP ORDER GUIDE DIGIT 9,11-12,14)	
ATP1KHR-A04A	KIT HEAD REBUILD, 1/4", VITON - PLUNGER/WIPER SEAL, 2 X BUSHING, 2 X U-CUP, SUCTION & DISCHARGE CHECK SEALS/SPRING
ATP1KHR-A04F	KIT HEAD REBUILD, 1/4", FFKM - PLUNGER/WIPER SEAL, 2 X BUSHING, 2 X U-CUP, SUCTION & DISCHARGE CHECK SEALS/SPRING
ATP1KHR-A04H	KIT HEAD REBUILD, 1/4", HNBR - PLUNGER/WIPER SEAL, 2 X BUSHING, 2 X U-CUP, SUCTION & DISCHARGE CHECK SEALS/SPRING
ATP1KHR-A04Q	KIT HEAD REBUILD, 1/4", FKM - PLUNGER/WIPER SEAL, 2 X BUSHING, 2 X U-CUP, SUCTION & DISCHARGE CHECK SEALS/SPRING
ATP1KHR-A06A	KIT HEAD REBUILD, 3/8", VITON - PLUNGER/WIPER SEAL, 2 X BUSHING, 2 X U-CUP, SUCTION & DISCHARGE CHECK SEALS/SPRING
ATP1KHR-A06F	KIT HEAD REBUILD, 3/8", FFKM - PLUNGER/WIPER SEAL, 2 X BUSHING, 2 X U-CUP, SUCTION & DISCHARGE CHECK SEALS/SPRING
ATP1KHR-A06H	KIT HEAD REBUILD, 3/8", HNBR - PLUNGER/WIPER SEAL, 2 X BUSHING, 2 X U-CUP, SUCTION & DISCHARGE CHECK SEALS/SPRING
ATP1KHR-A06Q	KIT HEAD REBUILD, 3/8", FKM - PLUNGER/WIPER SEAL, 2 X BUSHING, 2 X U-CUP, SUCTION & DISCHARGE CHECK SEALS/SPRING
ATP1KHR-A08A	KIT HEAD REBUILD, 1/2", VITON - PLUNGER/WIPER SEAL, 2 X BUSHING, 2 X U-CUP, SUCTION & DISCHARGE CHECK SEALS/SPRING
ATP1KHR-A08F	KIT HEAD REBUILD, 1/2", FFKM - PLUNGER/WIPER SEAL, 2 X BUSHING, 2 X U-CUP, SUCTION & DISCHARGE CHECK SEALS/SPRING
ATP1KHR-A08H	KIT HEAD REBUILD, 1/2", HNBR - PLUNGER/WIPER SEAL, 2 X BUSHING, 2 X U-CUP, SUCTION & DISCHARGE CHECK SEALS/SPRING
ATP1KHR-A08Q	KIT HEAD REBUILD, 1/2", FKM - PLUNGER/WIPER SEAL, 2 X BUSHING, 2 X U-CUP, SUCTION & DISCHARGE CHECK SEALS/SPRING
KIT PLUNGER: KPLRU##S7-001 (PUMP ORDER GUIDE DIGIT 11-12)	
KPLRU04S7-001	KIT PLUNGER, 1/4" 17-4 PLUNGER, RETAINING RING
KPLRU06S7-001	KIT PLUNGER, 3/8" 17-4 PLUNGER, RETAINING RING
KPLRU08S7-001	KIT PLUNGER, 1/2" 17-4 PLUNGER, RETAINING RING
KPLRU04CY-001	KIT PLUNGER, 1/4" SOLID CERAMIC PLUNGER, RETAINING RING
KPLRU06CY-001	KIT PLUNGER, 3/8" SOLID CERAMIC PLUNGER, RETAINING RING
KPLRU08CY-001	KIT PLUNGER, 1/2" SOLID CERAMIC PLUNGER, RETAINING RING
SUCTION CHECK VALVE: CBS04IS6#101 (PUMP ORDER GUIDE DIGIT 14)	
CBS04IS6A101	SUCTION CHECK VALVE, 316SS BODY, VITON SEALS, CERAMIC BALL, 1/4"NPT INLET
CBS04IS6F101	SUCTION CHECK VALVE, 316SS BODY, FFKM SEALS, CERAMIC BALL, 1/4"NPT INLET
CBS04IS6H101	SUCTION CHECK VALVE, 316SS BODY, HNBR SEALS, CERAMIC BALL, 1/4"NPT INLET
CBS04IS6Q101	SUCTION CHECK VALVE, 316SS BODY, FKM SEALS, CERAMIC BALL, 1/4"NPT INLET
KIT SUCTION CHECK VALVE REBUILD: KBS04S6#101 (PUMP ORDER GUIDE DIGIT 14)	
KBS04S6A101	KIT SUCTION CHECK REBUILD, CERAMIC BALL, VITON O-RING, SPRING
KBS04S6F101	KIT SUCTION CHECK REBUILD, CERAMIC BALL, FFKM O-RING, SPRING
KBS04S6H101	KIT SUCTION CHECK REBUILD, CERAMIC BALL, HNBR O-RING, SPRING
KBS04S6Q101	KIT SUCTION CHECK REBUILD, CERAMIC BALL, FKM O-RING, SPRING
DISCHARGE CHECK VALVE: CDF04S6#201 (PUMP ORDER GUIDE DIGIT 14)	
CDF04S6A201	DISCHARGE CHECK VALVE, 316SS BODY, VITON SEALS, POPPET, 1/4"NPT OUTLET
CDF04S6F201	DISCHARGE CHECK VALVE, 316SS BODY, FFKM SEALS, POPPET, 1/4"NPT OUTLET
CDF04S6H201	DISCHARGE CHECK VALVE, 316SS BODY, HNBR SEALS, POPPET, 1/4"NPT OUTLET
CDF04S6Q201	DISCHARGE CHECK VALVE, 316SS BODY, FKM SEALS, POPPET, 1/4"NPT OUTLET



<i>PART #</i>	<i>DESCRIPTION</i>
KIT DISCHARGE CHECK VALVE REBUILD: KFF04S6#201 (PUMP ORDER GUIDE DIGIT 14)	
KFF04S6A201	KIT DISCHARGE CHECK REBUILD, VITON SEALS, SPRING
KFF04S6F201	KIT DISCHARGE CHECK REBUILD, FFKM SEALS, SPRING
KFF04S6H201	KIT DISCHARGE CHECK REBUILD, HNBR SEALS, SPRING
KFF04S6Q201	KIT DISCHARGE CHECK REBUILD, FKM SEALS, SPRING
MOTOR (CORRESPONDS TO PUMP ORDER GUIDE DIGIT 6)	
SOLR0009-307M	OPT C: 12VDC, VARIABLE SPEED, 6-67 RPM, Ta 40C, 0.20HP, 150 LB-IN, C1D2, 30FT #12/2C, UNCLASSIFIED QUICK CONNECTS, IP65, 9 O'CLOCK SHAFT, FOR MANUAL HAND CONTROL
SOLR0009-307A	OPT D: 12VDC, VARIABLE SPEED 6-67 RPM, Ta 40C, 0.20HP, 150 LB-IN, C1D2, 10FT #14/7C, FLYING LEADS, IP65, 9 O'CLOCK SHAFT, FOR AUTOMATED CONTROL
EMACFS115V60H1P0020-01	OPT J: 115VAC/1PH/60HZ, SINGLE SPEED, 60 RPM, Ta 40C, 0.14HP, 150 LB-IN, C1D2, NO CABLE INCLUDED, 9 O'CLOCK SHAFT, FOR MANUAL HAND CONTROL
EMACFS115V60H1P0020-02	OPT K: 115VAC/1PH/60HZ, SINGLE SPEED, 60 RPM, Ta 40C, 0.14HP, 150 LB-IN, C1D2, 30FT #14/3C UNCLASSIFIED NEMA PLUG, 9 O'CLOCK SHAFT, FOR MANUAL HAND CONTROL

Build Part Number

S	L	A	P	5	6	7	8	9	10	1	5	H	14	15
16	17	18	19	20										

A complete Series SLA part number is 20 digits. For example, SLAP06C3DQ15H1FV143S.

DIGIT	CODE	SERIES DRIVE TYPE
1-3	SLA	STROKE LENGTH ADJUSTABLE

DIGIT	CODE	HEAD ADAPTER
4	P	PLUNGER

DIGIT	CODE	PLUNGER DIAMETER
5-6	06	3/8 IN - DEDICATED ONLY
	08	1/2 IN - STANDARD ONLY
	12	3/4 IN - STANDARD OR EV ONLY
	16	1 IN - STANDARD OR EV ONLY
	24	1.5 IN - DEDICATED ONLY

DIGIT	CODE	PLUNGER MATERIAL
7	C	CERAMIC COATED HASTELLOY*
	3	316SS
	D	DUPLEX 2205
	H	HASTELLOY C276
	T	TITANIUM

*1.5" plunger is ceramic coated S316.

DIGIT	CODE	HEAD/CHECK MATERIAL
8	3	316SS
	D	DUPLEX 2205
	H	HASTELLOY C276
	K	KYNAR (NOT AVAILABLE FOR 1.5")*
	P	PVC (NOT AVAILABLE FOR 1.5")*
	T	TITANIUM

*Kynar & PVC heads have Hastelloy check valves.

DIGIT	CODE	HEAD TYPE
9	D	DEDICATED (3/8", 1.5")
	E	EXTREME VISCOSITY (3/4", 1")
	L	LeakLess (3/8", 1/2", 3/4", 1", 1.5")
	K	LeakLess with Leak Detection
	S	STD MODULAR (1/2", 3/4", 1")

* Refer to Digit 5-6 for availability according to plunger diameter.

*Leak Detection sensor sold separately.

DIGIT	CODE	PLUNGER SEAL MATERIAL
10	F	FFKM/PEEK/CTFM FOR 3/8"-1"
		FFKM/PEEK/CTFM FOR 1.5"
	H	HNBR/PEEK/CTFM FOR ALL
	E	EPDM/PEEK/CTFM FOR ALL
	Q	FKM/PEEK/CTFM FOR ALL

DIGIT	CODE	GEAR REDUCTION RATIO
11-12	15	15:1

DIGIT	CODE	CONTROL
13	H	HAND (MANUAL)
	A	ROTARY ACTUATED (AUTO)

*Actuator sold separately.

DIGIT	CODE	FEET / MOUNTING BRACKET TYPE
14-15	1F	STANDARD FULL MOUNT
	1L	STANDARD HALF MOUNT LEFT

DIGIT	CODE	MOTOR ORIENTATION
16	H	HORIZONTAL
	V	VERTICAL

DIGIT	CODE	MOTOR FLANGE
17-19	056	NEMA 56C
	143	NEMA 143/145TC
	182	NEMA 182/184TC
	071	IEC 71 B5
	080	IEC 80 B5
	090	IEC 90 B5

DIGIT	CODE	COATING
20	S	STANDARD
	T	3-STAGE OFFSHORE

NOTE
Options marked "CALL" may have extended lead times.
Motor sold separately.



Series SLA Mult Drive Order Guide



Build Part Number

S	L	A	P	5	6	7	8	9	10	1	5	H	14	15
16	17	18												

A complete Series SLA part number is 18 digits. For example, SLAP06C3DQ15H1LH2S. When ordering the Mult Pump each individual pump will have it's own Build Part Number and Price.

DIGIT	CODE	SERIES DRIVE TYPE
1-3	SLA	STROKE LENGTH ADJUSTABLE

DIGIT	CODE	HEAD ADAPTER
4	P	PLUNGER

DIGIT	CODE	PLUNGER DIAMETER
5-6	06	3/8 IN - DEDICATED ONLY
	08	1/2 IN - STANDARD ONLY
	12	3/4 IN - STANDARD OR EV ONLY
	16	1 IN - STANDARD OR EV ONLY
	24	1.5 IN - DEDICATED ONLY

DIGIT	CODE	PLUNGER MATERIAL
7	C	CERAMIC COATED HASTELLOY*
	3	316SS
	D	DUPLEX 2205
	H	HASTELLOY C276
	T	TITANIUM

*1.5" plunger is ceramic coated S316.

DIGIT	CODE	HEAD/CHECK MATERIAL
8	3	316SS
	D	DUPLEX 2205
	H	HASTELLOY C276
	K	KYNAR (NOT AVAILABLE FOR 1.5")*
	P	PVC (NOT AVAILABLE FOR 1.5")*
	T	TITANIUM

*Kynar & PVC heads have Hastelloy check valves.

DIGIT	CODE	HEAD TYPE
9	D	DEDICATED (3/8", 1.5")
	E	EXTREME VISCOSITY (3/4", 1")
	L	LeakLess (3/8", 1/2", 3/4", 1", 1.5")
	K	LeakLess with Leak Detection
	S	STD MODULAR (1/2", 3/4", 1")

* Refer to Digit 5-6 for availability according to plunger diameter.

*Leak Detection sensor sold separately.

DIGIT	CODE	PLUNGER SEAL MATERIAL
10	F	FFKM/PEEK/CTFM FOR 3/8"-1"
		FFKM/PEEK/CTFM FOR 1.5"
	H	HNBR/PEEK/CTFM FOR ALL
	E	EPDM/PEEK/CTFM FOR ALL
	Q	FKM/PEEK/CTFM FOR ALL

DIGIT	CODE	GEAR REDUCTION RATIO
11-12	15	15:1

DIGIT	CODE	CONTROL
13	H	HAND (MANUAL)
	A	ROTARY ACTUATED (AUTO)

*Actuator sold separately.

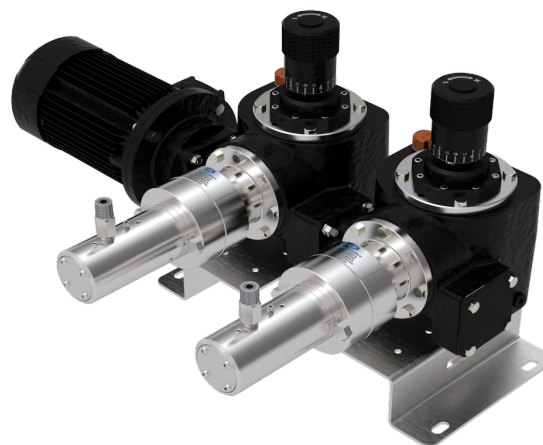
DIGIT	CODE	FEET / MOUNTING BRACKET TYPE
14-15	1R	STANDARD HALF BRACKET RIGHT
	NF	NO BRACKET

DIGIT	CODE	MOTOR ORIENTATION
16	H	HORIZONTAL

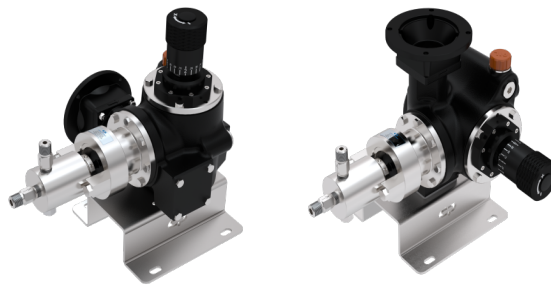
DIGIT	CODE	MOTOR FLANGE
17	2	PUMP 2
	3	PUMP 3
	4	PUMP 4
	5	PUMP 5
	6	PUMP 6

DIGIT	CODE	COATING
18	S	STANDARD
	T	3-STAGE OFFSHORE

NOTE
Options marked "CALL" may have extended lead times.
Motor sold separately.



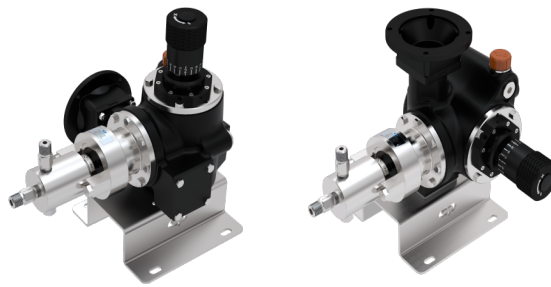
Series SLA Parts Order Guide



Please inquire with CheckPoint if you need an item that is not listed below.

PART #	DESCRIPTION
MISCELLANEOUS	
T10010	HEAD SEAL GLAND INSTALLATION TOOL
K50BAS6	KIT 1500 HEAD BLEED ASSY - 316SS - CERAMIC BALL - C276 HASTELLOY SPRING
K50BAHC	KIT 1500 HEAD BLEED ASSY - C276 - CERAMIC BALL - C276 HASTELLOY SPRING
SLA0040-01	PLASTIC DRIVE COVER
PLGSG-0001	OIL LEVEL INDICATOR
CAPVO-0001	OIL FILL CAP
SLA0004-01	BASE MOUNT FULL - 316SS
SLA0004-02	BASE MOUNT HALF - 316SS
HEAD REBUILD KIT	
K50HRK06NF	HEAD REBUILD KIT - 3/8 IN - FFKM - INCLUDES: NON-ADJUST PLUNGER SEAL KIT, CHECK KITS
K50HRK06NH	HEAD REBUILD KIT - 3/8 IN - HNBR - INCLUDES: NON-ADJUST PLUNGER SEAL KIT, CHECK KITS
K50HRK06NE	HEAD REBUILD KIT - 3/8 IN - EPDM - INCLUDES: NON-ADJUST PLUNGER SEAL KIT, CHECK KITS
K50HRK06NQ	HEAD REBUILD KIT - 3/8 IN - FKM - INCLUDES: NON-ADJUST PLUNGER SEAL KIT, CHECK KITS
K50HRK08NF	HEAD REBUILD KIT - 1/2 IN - FFKM - INCLUDES: NON-ADJUST PLUNGER SEAL KIT, CHECK KITS
K50HRK08NH	HEAD REBUILD KIT - 1/2 IN - HNBR - INCLUDES: NON-ADJUST PLUNGER SEAL KIT, CHECK KITS
K50HRK08NE	HEAD REBUILD KIT - 1/2 IN - EPDM - INCLUDES: NON-ADJUST PLUNGER SEAL KIT, CHECK KITS
K50HRK08NQ	HEAD REBUILD KIT - 1/2 IN - FKM - INCLUDES: NON-ADJUST PLUNGER SEAL KIT, CHECK KITS
K50HRK12NF	HEAD REBUILD KIT - 3/4 IN - FFKM - INCLUDES: NON-ADJUST PLUNGER SEAL KIT, CHECK KITS
K50HRK12NH	HEAD REBUILD KIT - 3/4 IN - HNBR - INCLUDES: NON-ADJUST PLUNGER SEAL KIT, CHECK KITS
K50HRK12NE	HEAD REBUILD KIT - 3/4 IN - EPDM - INCLUDES: NON-ADJUST PLUNGER SEAL KIT, CHECK KITS
K50HRK12NQ	HEAD REBUILD KIT - 3/4 IN - FKM - INCLUDES: NON-ADJUST PLUNGER SEAL KIT, CHECK KITS
K50HRK16NF	HEAD REBUILD KIT - 1 IN - FFKM - INCLUDES: NON-ADJUST PLUNGER SEAL KIT, CHECK KITS
K50HRK16NH	HEAD REBUILD KIT - 1 IN - HNBR - INCLUDES: NON-ADJUST PLUNGER SEAL KIT, CHECK KITS
K50HRK16NE	HEAD REBUILD KIT - 1 IN - EPDM - INCLUDES: NON-ADJUST PLUNGER SEAL KIT, CHECK KITS
K50HRK16NQ	HEAD REBUILD KIT - 1 IN - FKM - INCLUDES: NON-ADJUST PLUNGER SEAL KIT, CHECK KITS
K50HRK24NF	HEAD REBUILD KIT - 1-1/2 IN - FFKM - INCLUDES: NON-ADJUST PLUNGER SEAL KIT, CHECK KITS
K50HRK24NH	HEAD REBUILD KIT - 1-1/2 IN - HNBR - INCLUDES: NON-ADJUST PLUNGER SEAL KIT, CHECK KITS
K50HRK24NQ	HEAD REBUILD KIT - 1-1/2 IN - FKM - INCLUDES: NON-ADJUST PLUNGER SEAL KIT, CHECK KITS
PLUNGER KIT	
K50PLRCU06	3/8 IN PLUNGER REPL KIT - CERAMIC COATED C276
K50PLRCU08	1/2 IN PLUNGER REPL KIT - CERAMIC COATED C276
K50PLRCU12	3/4 IN PLUNGER REPL KIT - CERAMIC COATED C276
K50PLRCU16	1 IN PLUNGER REPL KIT - CERAMIC COATED C276
K50PLRCU24	1-1/2 IN PLUNGER REPL KIT - CERAMIC COATED 316SS
K50PLRHU06	3/8 IN PLUNGER REPL KIT - C276 HASTELLOY
K50PLRHU08	1/2 IN PLUNGER REPL KIT - C276 HASTELLOY
K50PLRHU12	3/4 IN PLUNGER REPL KIT - C276 HASTELLOY
K50PLRHU16	1 IN PLUNGER REPL KIT - C276 HASTELLOY
K50PLRHU24	1-1/2 IN PLUNGER REPL KIT - C276 HASTELLOY
K50PLRSU08	1/2 IN PLUNGER REPL KIT - 316SS
K50PLRSU12	3/4 IN PLUNGER REPL KIT - 316SS
K50PLRSU16	1 IN PLUNGER REPL KIT - 316SS
K50PLRSU24	1-1/2 IN PLUNGER REPL KIT - 316SS
K50PLRTU16	1 IN PLUNGER REPL KIT - TITANIUM
K50PLRTU12	3/4 IN PLUNGER REPL KIT - TITANIUM
K50PLRTU16	1 IN PLUNGER REPL KIT - TITANIUM
K50PLRTU24	1-1/2 IN PLUNGER REPL KIT - TITANIUM

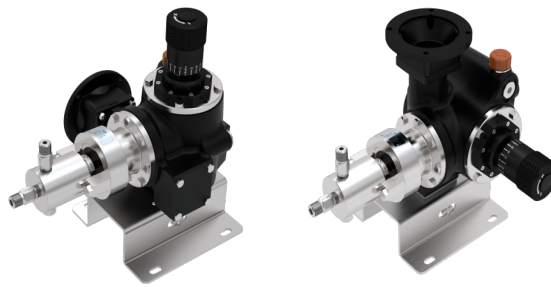
Series SLA Parts Order Guide



Please inquire with CheckPoint if you need an item that is not listed below.

PART#	DESCRIPTION
PLUNGER SEAL KIT	
KNCS06F087098	3/8 IN - FFKM/PEEK/CTFM VEE SEAL WITH WIPER
KNCS06H087098	3/8 IN - HNBR/PEEK/CTFM VEE SEAL WITH WIPER
KNCS06E087099	3/8 IN - EPDM/PEEK/CTFM VEE SEAL WITH WIPER
KNCS06Q087098	3/8 IN - FKM/PEEK/CTFM VEE SEAL WITH WIPER
KNCS08F100098	1/2 IN - FFKM/PEEK/CTFM VEE SEAL WITH WIPER
KNCS08H100098	1/2 IN - HNBR/PEEK/CTFM VEE SEAL WITH WIPER
KNCS08E100098	1/2 IN - EPDM/PEEK/CTFM VEE SEAL WITH WIPER
KNCS08Q100098	1/2 IN - FKM/PEEK/CTFM VEE SEAL WITH WIPER
KNCS12F125098	3/4 IN - FFKM/PEEK/CTFM VEE SEAL WITH WIPER
KNCS12H125098	3/4 IN - HNBR/PEEK/CTFM VEE SEAL WITH WIPER
KNCS12E125098	3/4 IN - EPDM/PEEK/CTFM VEE SEAL WITH WIPER
KNCS12Q125098	3/4 IN - FKM/PEEK/CTFM VEE SEAL WITH WIPER
KNCS16F150118	1 IN - FFKM/PEEK/CTFM VEE SEAL WITH WIPER
KNCS16H150118	1 IN - HNBR/PEEK/CTFM VEE SEAL WITH WIPER
KNCS16E150118	1 IN - EPDM/PEEK/CTFM VEE SEAL WITH WIPER
KNCS16Q150118	1 IN - FKM/PEEK/CTFM VEE SEAL WITH WIPER
VZ524FLCP1	1-1/2 IN - FFKM/PEEK/CTFE ZEE SEAL
VZ524QLCP1	1-1/2 IN - FKM/PEEK/CTFE ZEE SEAL
CHECK VALVE	
CFM08S6F201	3/8" HEAD SUCTION - 1/2" NPT CHECK ASSY - FFKM - 1 PSIG - 316SS
CFM08S6H201	3/8" HEAD SUCTION - 1/2" NPT CHECK ASSY - HNBR - 1 PSIG - 316SS
CFM08S6E201	3/8" HEAD SUCTION - 1/2" NPT CHECK ASSY - EPDM - 1 PSIG - 316SS
CFM08S6Q201	3/8" HEAD SUCTION - 1/2" NPT CHECK ASSY - FKM - 1 PSIG - 316SS
CDA06S6F101	3/8" HEAD DISCHARGE - 3/8" AUTOCLAVE X 7/8" UNF CHECK ASSY - FFKM - 316SS
CDA06S6H101	3/8" HEAD DISCHARGE - 3/8" AUTOCLAVE X 7/8" UNF CHECK ASSY - HNBR - 316SS
CDA06S6E101	3/8" HEAD DISCHARGE - 3/8" AUTOCLAVE X 7/8" UNF CHECK ASSY - EPDM - 316SS
CDA06S6Q101	3/8" HEAD DISCHARGE - 3/8" AUTOCLAVE X 7/8" UNF CHECK ASSY - FKM - 316SS
CFM08HCF101	1/2", 3/4", 1" MODULAR HEAD SUC & DIS - 1/2" NPT CHECK ASSY - FFKM - 1 PSIG - C276
CFM08HCQ101	1/2", 3/4", 1" MODULAR HEAD SUC & DIS - 1/2" NPT CHECK ASSY - FKM - 1 PSIG - C276
CFM08S6F101	1/2", 3/4", 1" MODULAR HEAD SUC & DIS - 1/2" NPT CHECK ASSY - FFKM - 1 PSIG - 316SS
CFM08S6H101	1/2", 3/4", 1" MODULAR HEAD SUC & DIS - 1/2" NPT CHECK ASSY - HNBR - 1 PSIG - 316SS
CFM08S6E101	1/2", 3/4", 1" MODULAR HEAD SUC & DIS - 1/2" NPT CHECK ASSY - EPDM - 1 PSIG - 316SS
CFM08S6Q101	1/2", 3/4", 1" MODULAR HEAD SUC & DIS - 1/2" NPT CHECK ASSY - FKM - 1 PSIG - 316SS
CFM08TTF101	1/2", 3/4", 1" MODULAR HEAD SUC & DIS - 1/2" NPT CHECK ASSY - FFKM - 1 PSIG - TITANIUM
CFM08TTQ101	1/2", 3/4", 1" MODULAR HEAD SUC & DIS - 1/2" NPT CHECK ASSY - FKM - 1 PSIG - TITANIUM
CFM12SHCF201	1.5" HEAD SUCTION - 3/4" NPT CHECK - FFKM - C276
CFM12SHCQ201	1.5" HEAD SUCTION - 3/4" NPT CHECK - FKM - C276
CFM12SS6F201	1.5" HEAD SUCTION - 3/4" NPT CHECK - FFKM - 316SS
CFM12SS6H201	1.5" HEAD SUCTION - 3/4" NPT CHECK - HNBR - 316SS
CFM12SS6Q201	1.5" HEAD SUCTION - 3/4" NPT CHECK - FKM - 316SS
CFM12STTF201	1.5" HEAD SUCTION - 3/4" NPT CHECK - FFKM - TITANIUM
CFM12STTQ201	1.5" HEAD SUCTION - 3/4" NPT CHECK - FKM - TITANIUM
CDM12D4F101	1.5" HEAD DISCHARGE - 3/4" NPT CHECK - FFKM - DUPLEX 2205
CDM12D4Q101	1.5" HEAD DISCHARGE - 3/4" NPT CHECK - FKM - DUPLEX 2205
CDM12D5F101	1.5" HEAD DISCHARGE - 3/4" NPT CHECK - FFKM - SUPER DUPLEX 2507
CDM12HCF101	1.5" HEAD DISCHARGE - 3/4" NPT CHECK - FFKM - C276
CDM12HCQ101	1.5" HEAD DISCHARGE - 3/4" NPT CHECK - FKM - C276
CDM12S6F101	1.5" HEAD DISCHARGE - 3/4" NPT CHECK - FFKM - 316SS
CDM12S6H101	1.5" HEAD DISCHARGE - 3/4" NPT CHECK - HNBR - 316SS
CDM12S6Q101	1.5" HEAD DISCHARGE - 3/4" NPT CHECK - FKM - 316SS
CDM12TTF101	1.5" HEAD DISCHARGE - 3/4" NPT CHECK - FFKM - TITANIUM
CDM12TTQ101	1.5" HEAD DISCHARGE - 3/4" NPT CHECK - FKM - TITANIUM

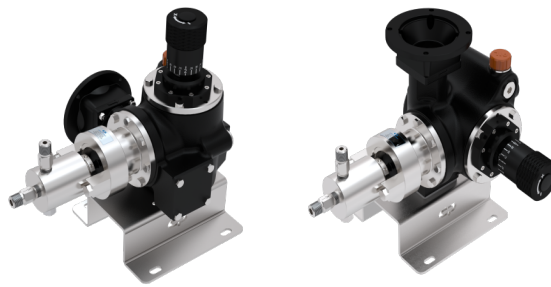
Series SLA Parts Order Guide



Please inquire with CheckPoint if you need an item that is not listed below.

PART#	DESCRIPTION
CHECK VALVE REBUILD KIT (1 KIT REQUIRED PER CHECK VALVE)	
KFF04S6F301	FITS: 3/8" SUCTION CFM08##F201 & 3/8" DISCHARGE CDA06##F101 - FFKM O-RINGS - SPRING
KFF04S6H301	FITS: 3/8" SUCTION CFM08##H201 & 3/8" DISCHARGE CDA06##H101 - HNBR O-RINGS - SPRING
KFF04S6E301	FITS: 3/8" SUCTION CFM08##H201 & 3/8" DISCHARGE CDA06##H101 - EPDM O-RINGS - SPRING
KFF04S6Q301	FITS: 3/8" SUCTION CFM08##Q201 & 3/8" DISCHARGE CDA06##Q101 - FKM O-RINGS - SPRING
KFM08S6F101	FITS: 1/2", 3/4", 1" MODULAR SUCTION & DISCHARGE CFM08##F101 - FFKM O-RINGS - SPRING
KFM08S6H101	FITS: 1/2", 3/4", 1" MODULAR SUCTION & DISCHARGE CFM08##H101 - HNBR O-RINGS - SPRING
KFM08S6E101	FITS: 1/2", 3/4", 1" MODULAR SUCTION & DISCHARGE CFM08##H101 - EPDM O-RINGS - SPRING
KFM08S6Q101	FITS: 1/2", 3/4", 1" MODULAR SUCTION & DISCHARGE CFM08##Q101 - FKM O-RINGS - SPRING
KFM12S6F201	FITS: 1.5" SUCTION CFM12S##F201 & DISCHARGE CDM12##F101 - FFKM O-RINGS - SPRING
KFM12S6H201	FITS: 1.5" SUCTION CFM12S##H201 & DISCHARGE CDM12##H101 - HNBR O-RINGS - SPRING
KFM12S6Q201	FITS: 1.5" SUCTION CFM12S##Q201 & DISCHARGE CDM12##Q101 - FKM O-RINGS - SPRING
COMPLETE WET END ASSEMBLY	
W50D306CNF3F6	3/8" WET END - 316SS HEAD/CHECKS - CERAMIC COATED C276 PLUNGER - FFKM SEALS W/WIPER
W50D306CNH3H6	3/8" WET END - 316SS HEAD/CHECKS - CERAMIC COATED C276 PLUNGER - HNBR SEALS W/WIPER
W50D306CNE3E6	3/8" WET END - 316SS HEAD/CHECKS - CERAMIC COATED C276 PLUNGER - EPDM SEALS W/WIPER
W50D306CNQ3Q6	3/8" WET END - 316SS HEAD/CHECKS - CERAMIC COATED C276 PLUNGER - FKM SEALS W/WIPER
W50M308CNF3F6	1/2" WET END - 316SS HEAD/CHECKS - CERAMIC COATED C276 PLUNGER - FFKM SEALS W/WIPER
W50M308CNH3H6	1/2" WET END - 316SS HEAD/CHECKS - CERAMIC COATED C276 PLUNGER - HNBR SEALS W/WIPER
W50M308CNE3HE	1/2" WET END - 316SS HEAD/CHECKS - CERAMIC COATED C276 PLUNGER - EPDM SEALS W/WIPER
W50M308CNQ3Q6	1/2" WET END - 316SS HEAD/CHECKS - CERAMIC COATED C276 PLUNGER - FKM SEALS W/WIPER
W50M312CNF3F6	3/4" WET END - 316SS HEAD/CHECKS - CERAMIC COATED C276 PLUNGER - FFKM SEALS W/WIPER
W50M312CNH3H6	3/4" WET END - 316SS HEAD/CHECKS - CERAMIC COATED C276 PLUNGER - HNBR SEALS W/WIPER
W50M312CNE3E6	3/4" WET END - 316SS HEAD/CHECKS - CERAMIC COATED C276 PLUNGER - EPDM SEALS W/WIPER
W50M312CNQ3Q6	3/4" WET END - 316SS HEAD/CHECKS - CERAMIC COATED C276 PLUNGER - FKM SEALS W/WIPER
W50M316CNF3F6	1" WET END - 316SS HEAD/CHECKS - CERAMIC COATED C276 PLUNGER - FFKM SEALS W/WIPER
W50M316CNH3H6	1" WET END - 316SS HEAD/CHECKS - CERAMIC COATED C276 PLUNGER - HNBR SEALS W/WIPER
W50M316CNE3E6	1" WET END - 316SS HEAD/CHECKS - CERAMIC COATED C276 PLUNGER - EPDM SEALS W/WIPER
W50M316CNQ3Q6	1" WET END - 316SS HEAD/CHECKS - CERAMIC COATED C276 PLUNGER - FKM SEALS W/WIPER
W50D324CNF3F6	1.5" WET END - 316SS HEAD/CHECKS - CERAMIC COATED 316SS PLUNGER - FFKM SEALS
W50D324CNH3H6	1.5" WET END - 316SS HEAD/CHECKS - CERAMIC COATED 316SS PLUNGER - HNBR SEALS
W50D324CNQ3Q6	1.5" WET END - 316SS HEAD/CHECKS - CERAMIC COATED 316SS PLUNGER - FKM SEALS
W50DH06HNFHF6	3/8" WET END - C276 HEAD/CHECKS - C276 PLUNGER - FFKM SEALS W/WIPER - 316SS BOLTS
W50DH06HNFHH6	3/8" WET END - C276 HEAD/CHECKS - C276 PLUNGER - HNBR SEALS W/WIPER - 316SS BOLTS
W50DH06HNFHQ6	3/8" WET END - C276 HEAD/CHECKS - C276 PLUNGER - FKM SEALS W/WIPER - 316SS BOLTS
W50MH08HNFHF6	1/2" WET END - C276 HEAD/CHECKS - C276 PLUNGER - FFKM SEALS W/WIPER - 316SS BOLTS
W50MH08HNFHH6	1/2" WET END - C276 HEAD/CHECKS - C276 PLUNGER - HNBR SEALS W/WIPER - 316SS BOLTS
W50MH08HNFHQ6	1/2" WET END - C276 HEAD/CHECKS - C276 PLUNGER - FKM SEALS W/WIPER - 316SS BOLTS
W50MH12HNFHF6	3/4" WET END - C276 HEAD/CHECKS - C276 PLUNGER - FFKM SEALS W/WIPER - 316SS BOLTS
W50MH12HNFHH6	3/4" WET END - C276 HEAD/CHECKS - C276 PLUNGER - HNBR SEALS W/WIPER - 316SS BOLTS
W50MH12HNFHQ6	3/4" WET END - C276 HEAD/CHECKS - C276 PLUNGER - FKM SEALS W/WIPER - 316SS BOLTS
W50MH16HNFHF6	1" WET END - C276 HEAD/CHECKS - C276 PLUNGER - FFKM SEALS W/WIPER - 316SS BOLTS
W50MH16HNFHH6	1" WET END - C276 HEAD/CHECKS - C276 PLUNGER - HNBR SEALS W/WIPER - 316SS BOLTS
W50MH16HNFHQ6	1" WET END - C276 HEAD/CHECKS - C276 PLUNGER - FKM SEALS W/WIPER - 316SS BOLTS
W50DH24HNFHF6	1.5" WET END - C276 HEAD/CHECKS - C276 PLUNGER - FFKM SEALS - 316SS BOLTS
W50DH24HNFHH6	1.5" WET END - C276 HEAD/CHECKS - C276 PLUNGER - HNBR SEALS - 316SS BOLTS
W50DH24HNFHQ6	1.5" WET END - C276 HEAD/CHECKS - C276 PLUNGER - FKM SEALS - 316SS BOLTS

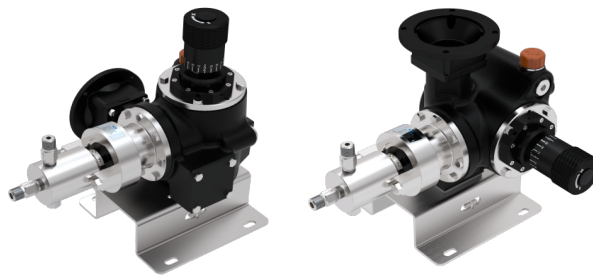
Series SLA Parts Order Guide



Please inquire with CheckPoint if you need an item that is not listed below.

<i>PART #</i>	<i>DESCRIPTION</i>
HEAD CONVERSION KIT (CONVERT THE INTERNALS OF A MODULAR HEAD FROM ONE PLUNGER SIZE TO ANOTHER)*	
*CONVERTING TO OR FROM A DEDICATED HEAD REQUIRES A COMPLETE WET END ASSEMBLY	
K50HCK08CNF	CONVERSION KIT - 1/2 IN - CER PLG KIT - SLEEVE - GLAND NUT - FFKM SEALS KIT
K50HCK08CNH	CONVERSION KIT - 1/2 IN - CER PLG KIT - SLEEVE - GLAND NUT - HNBR SEALS KIT
K50HCK08CNE	CONVERSION KIT - 1/2 IN - CER PLG KIT - SLEEVE - GLAND NUT - EPDM SEALS KIT
K50HCK08CNQ	CONVERSION KIT - 1/2 IN - CER PLG KIT - SLEEVE - GLAND NUT - FKM SEALS KIT
K50HCK12CNF	CONVERSION KIT - 3/4 IN - CER PLG KIT - SLEEVE - GLAND NUT - FFKM SEALS KIT
K50HCK12CNH	CONVERSION KIT - 3/4 IN - CER PLG KIT - SLEEVE - GLAND NUT - HNBR SEALS KIT
K50HCK12CNE	CONVERSION KIT - 3/4 IN - CER PLG KIT - SLEEVE - GLAND NUT - EPDM SEALS KIT
K50HCK12CNQ	CONVERSION KIT - 3/4 IN - CER PLG KIT - SLEEVE - GLAND NUT - FKM SEALS KIT
K50HCK16CNF	CONVERSION KIT - 1 IN - CER PLG KIT - SLEEVE - GLAND NUT - FFKM SEALS KIT
K50HCK16CNH	CONVERSION KIT - 1 IN - CER PLG KIT - SLEEVE - GLAND NUT - HNBR SEALS KIT
K50HCK16CNE	CONVERSION KIT - 1 IN - CER PLG KIT - SLEEVE - GLAND NUT - EPDM SEALS KIT
K50HCK16CNQ	CONVERSION KIT - 1 IN - CER PLG KIT - SLEEVE - GLAND NUT - FKM SEALS KIT

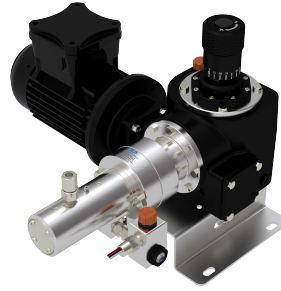
Series SLA Motors Order Guide



Please inquire with CheckPoint if you need an item that is not listed below.

PART #	DESCRIPTION
MOTORS	
NEMA, 115V/208-230V/1P/60Hz, 1725RPM Fixed Speed, EPFC, C1D1, Ta=40C, Continuous Duty, Outdoor Use, Vertical Shaft Down or Horizontal Position, No Feet	
EMA16F0050N-01	1/2HP, 56C
EMA16F0075N-01	3/4HP, 56C
EMA16F0100N-01	1HP, 56C
NEMA, 208-230V/460V/3P/60Hz, 1725RPM Fixed Speed, EPFC, C1D1, Ta=40C, Continuous Duty, Outdoor Use, Vertical Shaft Down or Horizontal Position, No Feet	
EMA36F0025N-01	1/4HP, 56C, EPNV
EMA36F0050N-01	1/2HP, 56C, EPFC
EMA36F0075N-01	3/4HP, 56C, EPFC
EMA36F0100N-01	1HP, 56C, EPFC
EMA36F0150N-01	1-1/2HP, 56C, EPFC
IEC, 220-240V/380-415V/50Hz, 3P, 1450RPM Fixed Speed, V1 Flange, Explosion Proof ATEX II 2G Ex db IIB T4 Gb, IP55, Ta -20C/+55C, Continuous Duty, Outdoor Use, Vertical Shaft Down or Horizontal Position, No Feet	
EMA35F0025I-01	1/4HP (0.19kW), IEC 71 V1
EMA35F0050I-01	1/2HP (0.37kW), IEC 80 V1
EMA35F0075I-01	3/4HP (0.55kW), IEC 80 V1
EMA35F0100I-01	1HP (0.75kW), IEC 90 V1
EMA35F0150I-01	1-1/2HP (1.10kW), IEC 90 V1
MOTOR FLANGE ADAPTER	
SLA0003-01	NEMA 56C OR 143/145TC
SLA0003-02	NEMA 182/184TC
SLA0003-06	IEC 071 B5/V1
SLA0003-03	IEC 080 B5/V1
SLA0003-04	IEC 090 B5/V1
SLA0003-05	IEC 100/112 B5/V1
SHAFT COUPLING ASSEMBLY (2x HUB + 1x SPIDER)	
CUPAAPM-E05-M19-R	TYPE A - 5/8" NEMA 56C SHAFT X 19MM PUMP SHAFT - SPIDER 98A RED
CUPAAPM-E07-M19-R	TYPE A - 7/8" NEMA 143/145TC SHAFT X 19MM PUMP SHAFT - SPIDER 98A RED
CUPBAPM-E09-M19-R	TYPE B - 1-1/8" NEMA 182/184TC SHAFT X 19MM PUMP SHAFT - SPIDER 98A RED
CUPAAPM-M14-M19-R	TYPE A - 14MM IEC 71 SHAFT X 19MM PUMP SHAFT - SPIDER 98A RED
CUPAAPM-M19-M19-R	TYPE A - 19MM IEC 80 SHAFT X 19MM PUMP SHAFT - SPIDER 98A RED
CUPAAPM-M19-M24-R	TYPE A - 24MM IEC 90 SHAFT X 19MM PUMP SHAFT - SPIDER 98A RED
CUPBAPM-M19-M28-R	TYPE B - 28MM IEC 100/112 SHAFT X 19MM PUMP SHAFT - SPIDER 98A RED
SHAFT COUPLING HUB (PARTS MUST BE THE SAME TYPE TO BE COMPATIBLE)	
CUPAHPM-E05	TYPE A - HUB - 5/8" NEMA 56C SHAFT
CUPAHPM-E07	TYPE A - HUB - 7/8" NEMA 143/145TC SHAFT
CUPBHPM-E09	TYPE B - HUB - 1-1/8" NEMA 182/184TC SHAFT
CUPAHPM-M14	TYPE A - HUB - 14MM IEC 71 SHAFT
CUPAHPM-M19	TYPE A - HUB - 19MM IEC 80 OR SLA PUMP SHAFT
CUPAHPM-M24	TYPE A - HUB - 24MM IEC 90 SHAFT
CUPBHPM-M28	TYPE B - HUB - 28MM IEC 100/112 SHAFT
CUPBHPM-M19	TYPE B - HUB - 19MM IEC 80 OR SLA PUMP SHAFT
SHAFT COUPLING SPIDER (PARTS MUST BE THE SAME TYPE TO BE COMPATIBLE)	
CUPAS-R	TYPE A - SPIDER 98A RED
CUPBS-R	TYPE B - SPIDER 98A RED

Series SLA LeakLess Parts Order Guide



Please inquire with CheckPoint if you need an item that is not listed below.

PART#	DESCRIPTION
MISCELLANEOUS	
ATP1KBA-A3	KIT BLEED ASSY - BLEED SCREW, SPRING, BALL
SLA0040-01	PLASTIC DRIVE COVER
PLGSG-0001	OIL LEVEL INDICATOR
CAPVO-0001	OIL FILL CAP
SLA0004-01	BASE MOUNT FULL - 316SS
SLA0004-02	BASE MOUNT HALF - 316SS
HEAD REBUILD KIT	
KLLHRK06NF	HEAD REBUILD KIT - 3/8 IN - FFKM - INCLUDES: PLUNGER SEAL KIT, CHECK KITS
KLLHRK06NH	HEAD REBUILD KIT - 3/8 IN - HNBR - INCLUDES: PLUNGER SEAL KIT, CHECK KITS
KLLHRK06NQ	HEAD REBUILD KIT - 3/8 IN - FKM - INCLUDES: PLUNGER SEAL KIT, CHECK KITS
KLLHRK08NF	HEAD REBUILD KIT - 1/2 IN - FFKM - INCLUDES: PLUNGER SEAL KIT, CHECK KITS
KLLHRK08NH	HEAD REBUILD KIT - 1/2 IN - HNBR - INCLUDES: PLUNGER SEAL KIT, CHECK KITS
KLLHRK08NQ	HEAD REBUILD KIT - 1/2 IN - FKM - INCLUDES: PLUNGER SEAL KIT, CHECK KITS
KLLHRK12NF	HEAD REBUILD KIT - 3/4 IN - FFKM - INCLUDES: PLUNGER SEAL KIT, CHECK KITS
KLLHRK12NH	HEAD REBUILD KIT - 3/4 IN - HNBR - INCLUDES: PLUNGER SEAL KIT, CHECK KITS
KLLHRK12NQ	HEAD REBUILD KIT - 3/4 IN - FKM - INCLUDES: PLUNGER SEAL KIT, CHECK KITS
KLLHRK16NF	HEAD REBUILD KIT - 1 IN - FFKM - INCLUDES: PLUNGER SEAL KIT, CHECK KITS
KLLHRK16NH	HEAD REBUILD KIT - 1 IN - HNBR - INCLUDES: PLUNGER SEAL KIT, CHECK KITS
KLLHRK16NQ	HEAD REBUILD KIT - 1 IN - FKM - INCLUDES: PLUNGER SEAL KIT, CHECK KITS
KLLHRK24NF	HEAD REBUILD KIT - 1-1/2 IN - FFKM - INCLUDES: PLUNGER SEAL KIT, CHECK KITS
KLLHRK24NQ	HEAD REBUILD KIT - 1-1/2 IN - FKM - INCLUDES: PLUNGER SEAL KIT, CHECK KITS
PLUNGER KIT	
KLLPLRCU06	3/8 IN LEAKLESS PLUNGER REPL KIT - CERAMIC
KLLPLRCU08	1/2 IN LEAKLESS PLUNGER REPL KIT - CERAMIC
KLLPLRCU12	3/4 IN LEAKLESS PLUNGER REPL KIT - CERAMIC
KLLPLRCU16	1 IN LEAKLESS PLUNGER REPL KIT - CERAMIC
KLLPLRCU24	1-1/2 IN LEAKLESS PLUNGER REPL KIT - CERAMIC

PLUNGER SEAL KIT	
KLCS06F087098	PLUNGER SEAL KIT - 3/8 IN LEAKLESS - FFKM SEALS W/ WIPER - LEAKLESS
KLCS06H087098	PLUNGER SEAL KIT - 3/8 IN LEAKLESS - HNBR SEALS W/ WIPER - LEAKLESS
KLCS06Q087098	PLUNGER SEAL KIT - 3/8 IN LEAKLESS - FKM SEALS W/ WIPER - LEAKLESS
KLCS08F100098	PLUNGER SEAL KIT - 1/2 IN LEAKLESS - FFKM SEALS W/ WIPER - LEAKLESS
KLCS08H100098	PLUNGER SEAL KIT - 1/2 IN LEAKLESS - HNBR SEALS W/ WIPER - LEAKLESS
KLCS08Q100098	PLUNGER SEAL KIT - 1/2 IN LEAKLESS - FKM SEALS W/ WIPER - LEAKLESS
KLCS12F125098	PLUNGER SEAL KIT - 3/4 IN LEAKLESS - FFKM SEALS W/ WIPER - LEAKLESS
KLCS12H125098	PLUNGER SEAL KIT - 3/4 IN LEAKLESS - HNBR SEALS W/ WIPER - LEAKLESS
KLCS12Q125098	PLUNGER SEAL KIT - 3/4 IN LEAKLESS - FKM SEALS W/ WIPER - LEAKLESS
KLCS16F150118	PLUNGER SEAL KIT - 1 IN LEAKLESS - FFKM SEALS W/ WIPER - LEAKLESS
KLCS16H150118	PLUNGER SEAL KIT - 1 IN LEAKLESS - HNBR SEALS W/ WIPER - LEAKLESS
KLCS16Q150118	PLUNGER SEAL KIT - 1 IN LEAKLESS - FKM SEALS W/ WIPER - LEAKLESS
KLCS24F199100	PLUNGER SEAL KIT - 1-1/2 IN LEAKLESS - FKM SEALS W/ WIPER - LEAKLESS
KLCS24Q199100	PLUNGER SEAL KIT - 1-1/2 IN LEAKLESS - FKM SEALS W/ WIPER - LEAKLESS

Series SLA LeakLess Parts Order Guide



Please inquire with CheckPoint if you need an item that is not listed below.

CHECK VALVE	
CDM04S6FB00	DISCHARGE CHECK ASSY - BALL CHECK - 5/8-18 TO 1/4 MNPT - 316SS - FFKM - LEAKLESS 1/8 - 3/8 HEADS
CDM04S6HB00	DISCHARGE CHECK ASSY - BALL CHECK - 5/8-18 TO 1/4 MNPT - 316SS - HNBR - LEAKLESS 1/8 - 3/8 HEADS
CDM04S6QB00	DISCHARGE CHECK ASSY - BALL CHECK - 5/8-18 TO 1/4 MNPT - 316SS - FKM - LEAKLESS 1/8 - 3/8 HEADS
CDM08S6FB00	DISCHARGE CHECK ASSY - BALL CHECK - 7/8-14 TO 1/2 MNPT - 316SS - FFKM - LEAKLESS 1/2 - 1 HEADS
CDM08S6HB00	DISCHARGE CHECK ASSY - BALL CHECK - 7/8-14 TO 1/2 MNPT - 316SS - HNBR - LEAKLESS 1/2 - 1 HEADS
CDM08S6QB00	DISCHARGE CHECK ASSY - BALL CHECK - 7/8-14 TO 1/2 MNPT - 316SS - FKM - LEAKLESS 1/2 - 1 HEADS
CSH11S6FB00	SUCTION CHECK ASSY - BALL CHECK - 316SS - FFKM - LEAKLESS 1/8 - 3/8 HEADS
CSH11S6HB00	SUCTION CHECK ASSY - BALL CHECK - 316SS - HNBR - LEAKLESS 1/8 - 3/8 HEADS
CSH11S6QB00	SUCTION CHECK ASSY - BALL CHECK - 316SS - FKM - LEAKLESS 1/8 - 3/8 HEADS
CSH18S6FB00	SUCTION CHECK ASSY - BALL CHECK - 316SS - FFKM - LEAKLESS 1/2 - 1 HEADS
CSH18S6HB00	SUCTION CHECK ASSY - BALL CHECK - 316SS - HNBR - LEAKLESS 1/2 - 1 HEADS
CSH18S6QB00	SUCTION CHECK ASSY - BALL CHECK - 316SS - FKM - LEAKLESS 1/2 - 1 HEADS
CHECK VALVE REBUILD KIT (1 KIT REQUIRED PER CHECK VALVE)	
KLLDC0206F	DISCHARGE BALL CHECK KIT - CERAMIC - LEAKLESS 1/8 - 3/8 HEADS - FFKM
KLLDC0206H	DISCHARGE BALL CHECK KIT - CERAMIC - LEAKLESS 1/8 - 3/8 HEADS - HNBR
KLLDC0206Q	DISCHARGE BALL CHECK KIT - CERAMIC - LEAKLESS 1/8 - 3/8 HEADS - FKM
KLLDC0816F	DISCHARGE BALL CHECK KIT - CERAMIC - LEAKLESS 1/2 - 1 HEADS - FFKM
KLLDC0816H	DISCHARGE BALL CHECK KIT - CERAMIC - LEAKLESS 1/2 - 1 HEADS - HNBR
KLLDC0816Q	DISCHARGE BALL CHECK KIT - CERAMIC - LEAKLESS 1/2 - 1 HEADS - FKM
KLISC0206F	SUCTION BALL CHECK KIT - CERAMIC - LEAKLESS 1/8 - 3/8 HEADS - FFKM
KLISC0206H	SUCTION BALL CHECK KIT - CERAMIC - LEAKLESS 1/8 - 3/8 HEADS - HNBR
KLISC0206Q	SUCTION BALL CHECK KIT - CERAMIC - LEAKLESS 1/8 - 3/8 HEADS - FKM
KLISC0816F	SUCTION BALL CHECK KIT - CERAMIC - LEAKLESS 1/2 - 1 HEADS - FFKM
KLISC0816H	SUCTION BALL CHECK KIT - CERAMIC - LEAKLESS 1/2 - 1 HEADS - HNBR
KLISC0816Q	SUCTION BALL CHECK KIT - CERAMIC - LEAKLESS 1/2 - 1 HEADS - FKM
COMPLETE WET END ASSEMBLY	
WLLD306YNH3H6	LEAKLESS WET END - 3/8 IN - 316SS HEAD/CHECKS - CERAMIC PLUNGER - HNBR SEALS W/ WIPER
WLLD306YNF3F6	LEAKLESS WET END - 3/8 IN - 316SS HEAD/CHECKS - CERAMIC PLUNGER - FFKM SEALS W/ WIPER
WLLD306YNQ3Q6	LEAKLESS WET END - 3/8 IN - 316SS HEAD/CHECKS - CERAMIC PLUNGER - FKM SEALS W/ WIPER
WLLD308YNH3H6	LEAKLESS WET END - 1/2 IN - 316SS HEAD/CHECKS - CERAMIC PLUNGER - HNBR SEALS W/ WIPER
WLLD308YNF3F6	LEAKLESS WET END - 1/2 IN - 316SS HEAD/CHECKS - CERAMIC PLUNGER - FFKM SEALS W/ WIPER
WLLD308YNQ3Q6	LEAKLESS WET END - 1/2 IN - 316SS HEAD/CHECKS - CERAMIC PLUNGER - FKM SEALS W/ WIPER
WLLD312YNH3H6	LEAKLESS WET END - 3/4 IN - 316SS HEAD/CHECKS - CERAMIC PLUNGER - HNBR SEALS W/ WIPER
WLLD312YNF3F6	LEAKLESS WET END - 3/4 IN - 316SS HEAD/CHECKS - CERAMIC PLUNGER - FFKM SEALS W/ WIPER
WLLD312YNQ3Q6	LEAKLESS WET END - 3/4 IN - 316SS HEAD/CHECKS - CERAMIC PLUNGER - FKM SEALS W/ WIPER
WLLD316YNH3H6	LEAKLESS WET END - 1 IN - 316SS HEAD/CHECKS - CERAMIC PLUNGER - HNBR SEALS W/ WIPER
WLLD316YNF3F6	LEAKLESS WET END - 1 IN - 316SS HEAD/CHECKS - CERAMIC PLUNGER - FFKM SEALS W/ WIPER
WLLD316YNQ3Q6	LEAKLESS WET END - 1 IN - 316SS HEAD/CHECKS - CERAMIC PLUNGER - FKM SEALS W/ WIPER

Build Part Number

S	P	S	4	5	6	7	8	9	10	11	12	13	14	15	16
----------	----------	----------	---	---	---	---	---	---	----	----	----	----	----	----	----

A complete Series SPS part number is 16 digits. For example, SPS2G100WG110HM0. Note that some codes are multiple digits.

DIGIT	CODE	PRODUCT TYPE
1-3	SPS	SOLAR POWER SYSTEM

DIGIT	CODE	DC POWER
4	2	12 VDC

DIGIT	CODE	PANEL MOUNT TYPE
5	G	GROUND A-FRAME
	P	TOP OF POLE

DIGIT	CODE	PANEL ARRAY SIZE
6-9	FOR [G] GROUND A-FRAME PANEL MOUNT TYPE	
	100W	100 WATT (1 x 100W PANEL)
	100Z	1-PANEL MOUNT - OMIT PANEL
	200W	200 WATT (2 x 100W PANEL)
	200Z	2-PANEL MOUNT - OMIT PANELS
	FOR [P] TOP OF POLE PANEL MOUNT TYPE	
	100W	100 WATT (1 x 100W PANEL)
	100Z	1-PANEL MOUNT - OMIT PANEL
	200W	200 WATT (2 x 100W PANEL)
	200Z	2-PANEL MOUNT - OMIT PANELS
	300W	300 WATT (3 x 100W PANEL)
	300Z	3-PANEL MOUNT - OMIT PANELS

DIGIT	CODE	BATTERY BOX MOUNT TYPE
10	G	GROUND INSTALLATION
	P	POLE OR WALL INSTALLATION
	T	TRIPOD BASE INCLUDED*

*Digit 5 must be code P. Only available for top of pole panel mount type.

DIGIT	CODE	BATTERY BANK SIZE
11-14	FOR [G] GROUND BATTERY BOX MOUNT TYPE	
	110H	110 AH (1x 110AH SLA), 20A CC
	097G	97 AH (1x 97AH GEL), 20A CC
	110Z	1-BATTERY 20A BOX - OMIT BATT
	220H	220 AH (2 x 110AH SLA), 20A CC
	194G	194 AH (2 x 97AH GEL), 20A CC
	220Z	2-BATTERY 20A BOX - OMIT BATT
	330H	330 AH (3 x 110AH SLA), 30A CC
	291G	291 AH (3 x 97AH GEL), 30A CC
	330Z	3-BATTERY 30A BOX - OMIT BATT
	FOR [P] POLE OR [T] TRIPOD BATTERY BOX MOUNT TYPE	
	110H	110 AH (1x 110AH SLA), 20A CC
	097G	97 AH (1x 97AH GEL), 20A CC
	110Z	1-BATTERY 20A BOX - OMIT BATT
	220H	220 AH (2 x 110AH SLA), 20A CC
	194G	194 AH (2 x 97AH GEL), 20A CC
	220Z	2-BATTERY 20A BOX - OMIT BATT

DIGIT	CODE	CONTROL
15	M	MANUAL
	T	THERMOSTAT RUN PERMISSIVE
	I	INTELLIJECT LITE AUTO-READY*

*IntelliJECT hardware sold separately. Auto-Ready for 12VDC variable speed motor.

DIGIT	CODE	SPECIAL
16	G	STANDARD DESIGN

Series SBB Order Guide



Build Part Number

S	B	B	4	5	6	7	8	9	10	11
----------	----------	----------	---	---	---	---	---	---	----	----

A complete Series SBB part number is 11 digits. For example, SBB2P110HI0. Note that some codes are multiple digits.

DIGIT	CODE	PRODUCT TYPE
1-3	SBB	SOLAR BATTERY BOX SUBASSY

DIGIT	CODE	DC POWER
4	2	12 VDC

DIGIT	CODE	BATTERY BOX MOUNT TYPE
5	G	GROUND
	P	POLE OR WALL

DIGIT	CODE	BATTERY BANK SIZE
6-9	FOR [G] GROUND BATTERY BOX MOUNT TYPE	
	110H	110 AH (1x 110AH SLA), 20A CC
	097G	97 AH (1x 97AH GEL), 20A CC
	110Z	1-BATTERY 20A BOX - OMIT BATT
	220H	220 AH (2 x 110AH SLA), 20A CC
	194G	194 AH (2 x 97AH GEL), 20A CC
	220Z	2-BATTERY 20A BOX - OMIT BATT
	330H	330 AH (3 x 110AH SLA), 30A CC
	291G	291 AH (3 x 97AH GEL), 30A CC
	330Z	3-BATTERY 30A BOX - OMIT BATT
	FOR [P] POLE OR [T] TRIPOD BATTERY BOX MOUNT TYPE	
	110H	110 AMP-HOUR (1 x 110AH BATT)
	108G	108 AH (1 x 108AH GEL BATTERY)
	110Z	1-BATTERY BOX - OMIT BATTERY
	220H	220 AMP-HOUR (2 x 110AH BATT)
	216G	216 AH (2 x 108AH GEL BATTERY)
	220Z	2-BATTERY BOX - OMIT BATTERIES

DIGIT	CODE	CONTROL
10	M	MANUAL
	T	THERMOSTAT RUN PERMISSIVE
	I	INTELLIJECT LITE AUTO-READY*

*IntelliJECT hardware sold separately. Auto-Ready for 12VDC variable speed DC motor.

DIGIT	CODE	SPECIAL
11	G	STANDARD DESIGN
	P	UPGRADE SLA TO GEL BATTERIES

Series SPM Order Guide



Build Part Number

S	P	M	4	5	6	7	8	9	10
----------	----------	----------	---	---	---	---	---	---	----

A complete Series SPM part number is 10 digits. For example, SPM2P100W0. Note that some codes are multiple digits.

DIGIT	CODE	PRODUCT TYPE
1-3	SPM	SOLAR PANEL MOUNT SUBASSY

DIGIT	CODE	DC POWER
4	2	12 VDC

DIGIT	CODE	PANEL MOUNT TYPE
5	G	GROUND A-FRAME
	P	TOP OF POLE

DIGIT	CODE	PANEL ARRAY SIZE
6-9	FOR [G] GROUND A-FRAME PANEL MOUNT TYPE	
	100W	100 WATT (1 x 100W PANEL)
	100Z	1-PANEL MOUNT - OMIT PANEL
	200W	200 WATT (2 x 100W PANEL)
	200Z	2-PANEL MOUNT - OMIT PANELS
	FOR [P] TOP OF POLE PANEL MOUNT TYPE	
	100W	100 WATT (1 x 100W PANEL)
	100Z	1-PANEL MOUNT - OMIT PANEL
	200W	200 WATT (2 x 100W PANEL)
	200Z	2-PANEL MOUNT - OMIT PANELS
	300W	300 WATT (3 x 100W PANEL)
	300Z	3-PANEL MOUNT - OMIT PANELS

DIGIT	CODE	SPECIAL
10	0	STANDARD DESIGN