



3/8" CERAMIC HLC

ITEM NO.	PART NUMBER	BOM Desc	QTY.
1	CUPAAPM-E05-M19-R	COUPLING	1
2	HHBS6061616	BOLT	4
3	HHNS60616	NUT	4
4	HLWS6106	WASHER	4
5	SLA0003-01	FLANGE	1
6	SLA0004-01	SUPPORT	1
7	SLA1000-V101	DRIVE ASSY VERTICAL	1
8	SSCS6061628	SCREW	4
9	W50D306CNH3H6	WET END ASSY	1

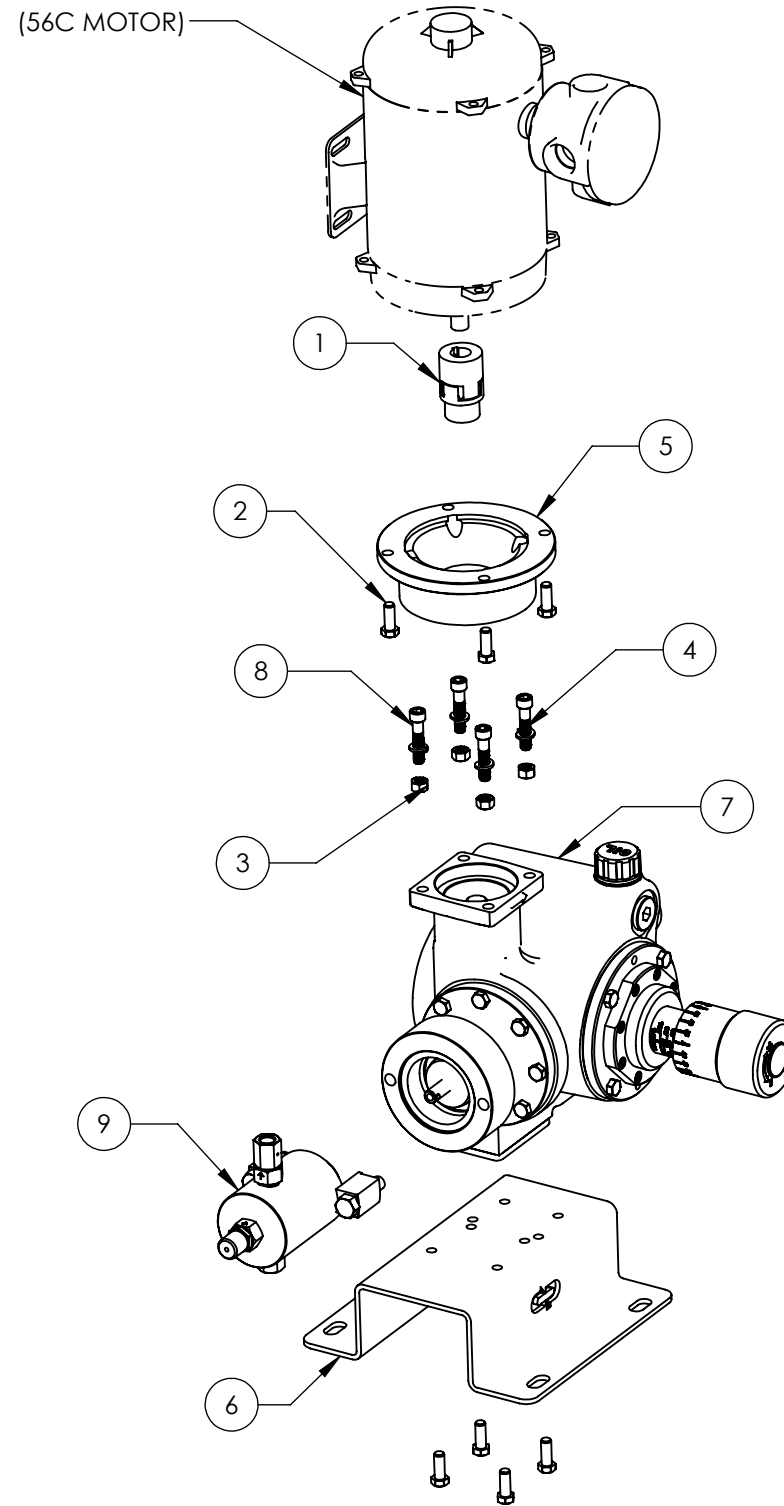
3/8" CERAMIC FKM

ITEM NO.	PART NUMBER	BOM Desc	QTY.
1	CUPAAPM-E05-M19-R	COUPLING	1
2	HHBS6061616	BOLT	4
3	HHNS60616	NUT	4
4	HLWS6106	WASHER	4
5	SLA0003-01	FLANGE	1
6	SLA0004-01	SUPPORT	1
7	SLA1000-V101	DRIVE ASSY VERTICAL	1
8	SSCS6061628	SCREW	4
9	W50D306CNQ3Q6	WET END ASSY	1

3/8" CERAMIC FFKM

ITEM NO.	PART NUMBER	BOM Desc	QTY.
1	CUPAAPM-E05-M19-R	COUPLING	1
2	HHBS6061616	BOLT	4
3	HHNS60616	NUT	4
4	HLWS6106	WASHER	4
5	SLA0003-01	FLANGE	1
6	SLA0004-01	SUPPORT	1
7	SLA1000-V101	DRIVE ASSY VERTICAL	1
8	SSCS6061628	SCREW	4
9	W50D306CNF3F6	WET END ASSY	1

VERTICAL SLA-P WITH NON-ADJUSTABLE 3/8" INJECTION HEAD



PROPRIETARY AND CONFIDENTIAL
 THE INFORMATION CONTAINED HEREIN IS PROPRIETARY TO CHECKPOINT SYSTEMS AND SHALL NOT BE REPRODUCED OR DISCLOSED IN WHOLE OR IN PART OR USED FOR ANY PURPOSE EXCEPT WHEN SUCH USER POSSESSES DIRECT WRITTEN AUTHORIZATION FROM CHECKPOINT SYSTEMS

-- DO NOT SCALE DRAWING --

DOC EFF - 03/03/20			
		DWG. TITLE VERTICAL SLA 56C MOTOR 3/8" ASSY	
REV	00	MKT-SLA-TASPV-PL	SIZE B
DRAWING NUMBER		SHEET 1 OF 33	

3/8" CERAMIC HLC

ITEM NO.	PART NUMBER	BOM Desc	QTY.
1	CUPAAPM-M14-M19-R	COUPLING	1
2	HHBS6051816	BOLT	4
3	HHBS6061616	BOLT	4
4	SLA0003-06	FLANGE	1
5	SLA0004-01	SUPPORT	1
6	SLA1000-V101	DRIVE ASSY VERTICAL	1
7	W50D306CNH3H6	WET END ASSY	1

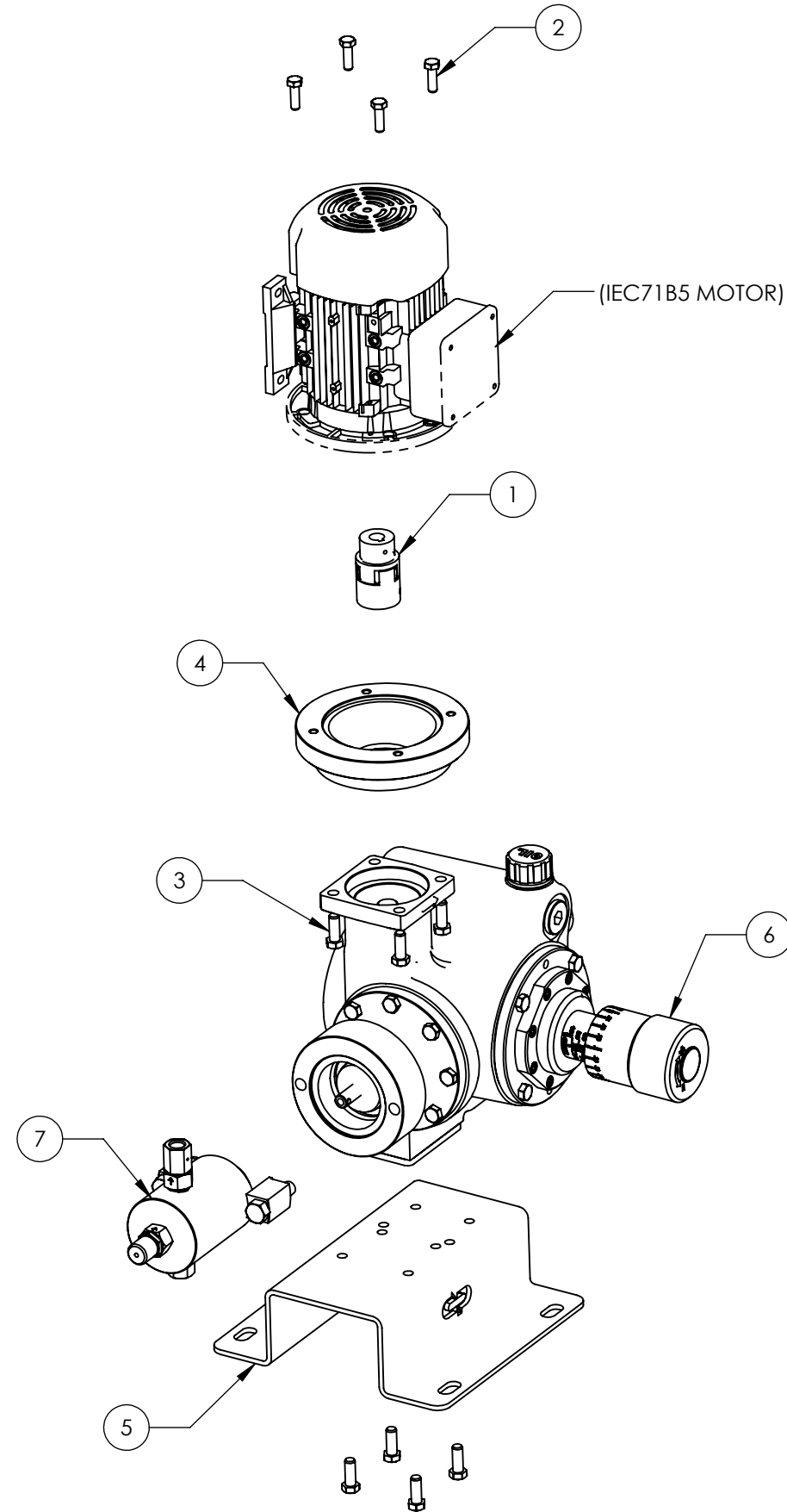
3/8" CERAMIC FKM

ITEM NO.	PART NUMBER	BOM Desc	QTY.
1	CUPAAPM-M14-M19-R	COUPLING	1
2	HHBS6051816	BOLT	4
3	HHBS6061616	BOLT	4
4	SLA0003-06	FLANGE	1
5	SLA0004-01	SUPPORT	1
6	SLA1000-V101	DRIVE ASSY VERTICAL	1
7	W50D306CNQ3Q6	WET END ASSY	1

3/8" CERAMIC FFKM

ITEM NO.	PART NUMBER	BOM Desc	QTY.
1	CUPAAPM-M14-M19-R	COUPLING	1
2	HHBS6051816	BOLT	4
3	HHBS6061616	BOLT	4
4	SLA0003-06	FLANGE	1
5	SLA0004-01	SUPPORT	1
6	SLA1000-V101	DRIVE ASSY VERTICAL	1
7	W50D306CNF3F6	WET END ASSY	1

VERTICAL SLA-P WITH NON-ADJUSTABLE 3/8" INJECTION HEAD



PROPRIETARY AND CONFIDENTIAL
 THE INFORMATION CONTAINED HEREIN IS PROPRIETARY TO CHECKPOINT SYSTEMS AND SHALL NOT BE REPRODUCED OR DISCLOSED IN WHOLE OR IN PART OR USED FOR ANY PURPOSE EXCEPT WHEN SUCH USER POSSESSES DIRECT WRITTEN AUTHORIZATION FROM CHECKPOINT SYSTEMS

-- DO NOT SCALE DRAWING --

DOC EFF - 03/03/20			
		DWG. TITLE VERTICAL SLA IEC71 MOTOR 3/8" ASSY	
REV 00	MKT-SLA-TASPV-PL	SIZE B	
DRAWING NUMBER		SHEET 2 OF 33	

3/8" CERAMIC HLC

ITEM NO.	PART NUMBER	BOM Desc	QTY.
1	CUPAAPM-M19-M19-R	COUPLING	1
2	HHBS6071424	BOLT	4
3	HHNS60616	NUT	4
4	HHNS60714	NUT	4
5	HLWS6106	WASHER	4
6	HLWS6107	WASHER	4
7	SLA0003-03	FLANGE	1
8	SLA0004-01	SUPPORT	1
9	SLA1000-V101	DRIVE ASSY VERTICAL	1
10	SSCS6061628	SCREW	4
11	W50D306CNH3H6	WET END ASSY	1

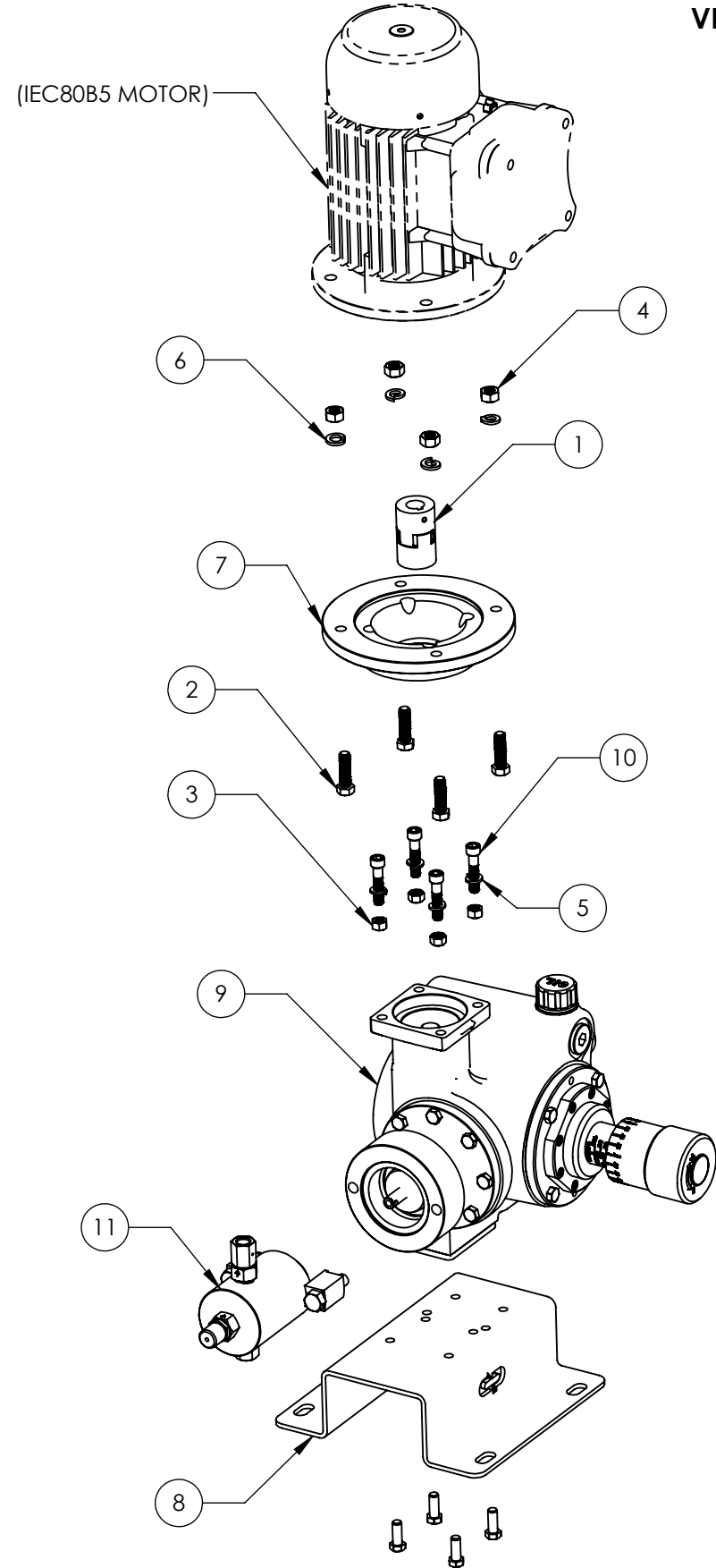
3/8" CERAMIC FKM

ITEM NO.	PART NUMBER	BOM Desc	QTY.
1	CUPAAPM-M19-M19-R	COUPLING	1
2	HHBS6071424	BOLT	4
3	HHNS60616	NUT	4
4	HHNS60714	NUT	4
5	HLWS6106	WASHER	4
6	HLWS6107	WASHER	4
7	SLA0003-03	FLANGE	1
8	SLA0004-01	SUPPORT	1
9	SLA1000-V101	DRIVE ASSY VERTICAL	1
10	SSCS6061628	SCREW	4
11	W50D306CNQ3Q6	WET END ASSY	1

3/8" CERAMIC FFKM

ITEM NO.	PART NUMBER	BOM Desc	QTY.
1	CUPAAPM-M19-M19-R	COUPLING	1
2	HHBS6071424	BOLT	4
3	HHNS60616	NUT	4
4	HHNS60714	NUT	4
5	HLWS6106	WASHER	4
6	HLWS6107	WASHER	4
7	SLA0003-03	FLANGE	1
8	SLA0004-01	SUPPORT	1
9	SLA1000-V101	DRIVE ASSY VERTICAL	1
10	SSCS6061628	SCREW	4
11	W50D306CNF3F6	WET END ASSY	1

VERTICAL SLA-P WITH NON-ADJUSTABLE 3/8" INJECTION HEAD



PROPRIETARY AND CONFIDENTIAL
 THE INFORMATION CONTAINED HEREIN IS PROPRIETARY TO CHECKPOINT SYSTEMS AND SHALL NOT BE REPRODUCED OR DISCLOSED IN WHOLE OR IN PART OR USED FOR ANY PURPOSE EXCEPT WHEN SUCH USER POSSESSES DIRECT WRITTEN AUTHORIZATION FROM CHECKPOINT SYSTEMS

-- DO NOT SCALE DRAWING --

DOC EFF - 03/03/20			
		DWG. TITLE VERTICAL SLA IEC80 MOTOR 3/8" ASSY	
REV	00	MKT-SLA-TASPV-PL	SIZE B
DRAWING NUMBER		SHEET 3 OF 33	

3/8" CERAMIC HLC

ITEM NO.	PART NUMBER	BOM Desc	QTY.
1	CUPAAPM-M19-M24-R	COUPLING	1
2	HHBS6071424	BOLT	4
3	HHNS60616	NUT	4
4	HHNS60714	NUT	4
5	HLWS6106	WASHER	4
6	HLWS6107	WASHER	4
7	SLA0003-04	FLANGE	1
8	SLA0004-01	SUPPORT	1
9	SLA1000-V101	DRIVE ASSY VERTICAL	1
10	SSCS6061628	SCREW	4
11	W50D306CNH3H6	WET END ASSY	1

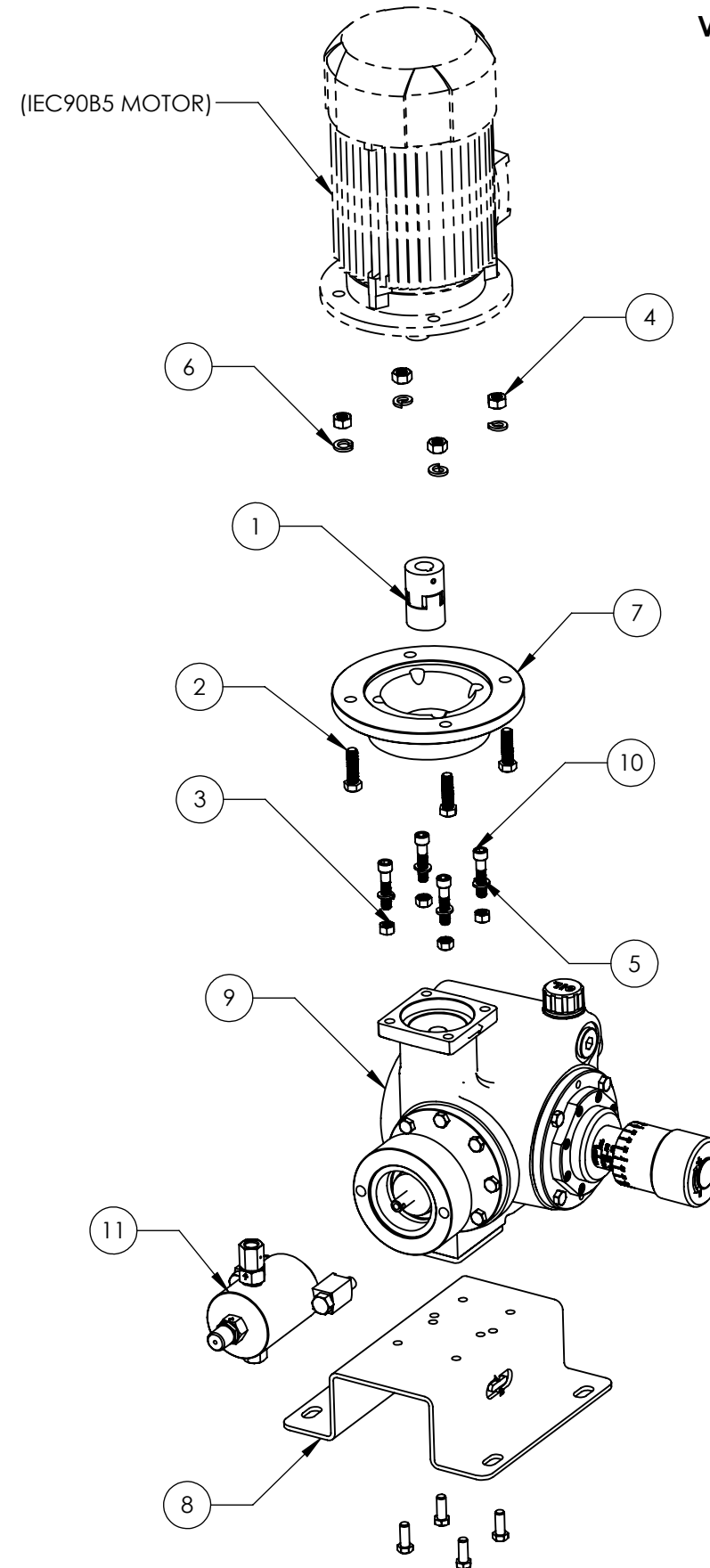
3/8" CERAMIC FKM

ITEM NO.	PART NUMBER	BOM Desc	QTY.
1	CUPAAPM-M19-M24-R	COUPLING	1
2	HHBS6071424	BOLT	4
3	HHNS60616	NUT	4
4	HHNS60714	NUT	4
5	HLWS6106	WASHER	4
6	HLWS6107	WASHER	4
7	SLA0003-04	FLANGE	1
8	SLA0004-01	SUPPORT	1
9	SLA1000-V101	DRIVE ASSY VERTICAL	1
10	SSCS6061628	SCREW	4
11	W50D306CNQ3Q6	WET END ASSY	1

3/8" CERAMIC FFKM

ITEM NO.	PART NUMBER	BOM Desc	QTY.
1	CUPAAPM-M19-M24-R	COUPLING	1
2	HHBS6071424	BOLT	4
3	HHNS60616	NUT	4
4	HHNS60714	NUT	4
5	HLWS6106	WASHER	4
6	HLWS6107	WASHER	4
7	SLA0003-04	FLANGE	1
8	SLA0004-01	SUPPORT	1
9	SLA1000-V101	DRIVE ASSY VERTICAL	1
10	SSCS6061628	SCREW	4
11	W50D306CNF3F6	WET END ASSY	1

VERTICAL SLA-P WITH NON-ADJUSTABLE 3/8" INJECTION HEAD



PROPRIETARY AND CONFIDENTIAL
 THE INFORMATION CONTAINED HEREIN IS PROPRIETARY TO CHECKPOINT SYSTEMS AND SHALL NOT BE REPRODUCED OR DISCLOSED IN WHOLE OR IN PART OR USED FOR ANY PURPOSE EXCEPT WHEN SUCH USER POSSESSES DIRECT WRITTEN AUTHORIZATION FROM CHECKPOINT SYSTEMS

-- DO NOT SCALE DRAWING --

DOC EFF - 03/03/20			
		DWG. TITLE VERTICAL SLA IEC90 MOTOR 3/8" ASSY	
REV 00	MKT-SLA-TASPV-PL	SIZE B	
DRAWING NUMBER		SHEET 4 OF 33	

3/8" CERAMIC HLC

ITEM NO.	PART NUMBER	BOM Desc	QTY.
1	CUPBAPM-M19-M28-R	COUPLING	1
2	HHBS6081332	BOLT	4
3	HHNS60616	NUT	4
4	HHNS60813	NUT	4
5	HLWS6106	WASHER	4
6	HLWS6108	WASHER	4
7	SLA0003-05	FLANGE	1
8	SLA0004-01	SUPPORT	1
9	SLA1000-V101	DRIVE ASSY VERTICAL	1
10	SSCS6061628	SCREW	4
11	W50D306CNH3H6	WET END ASSY	1

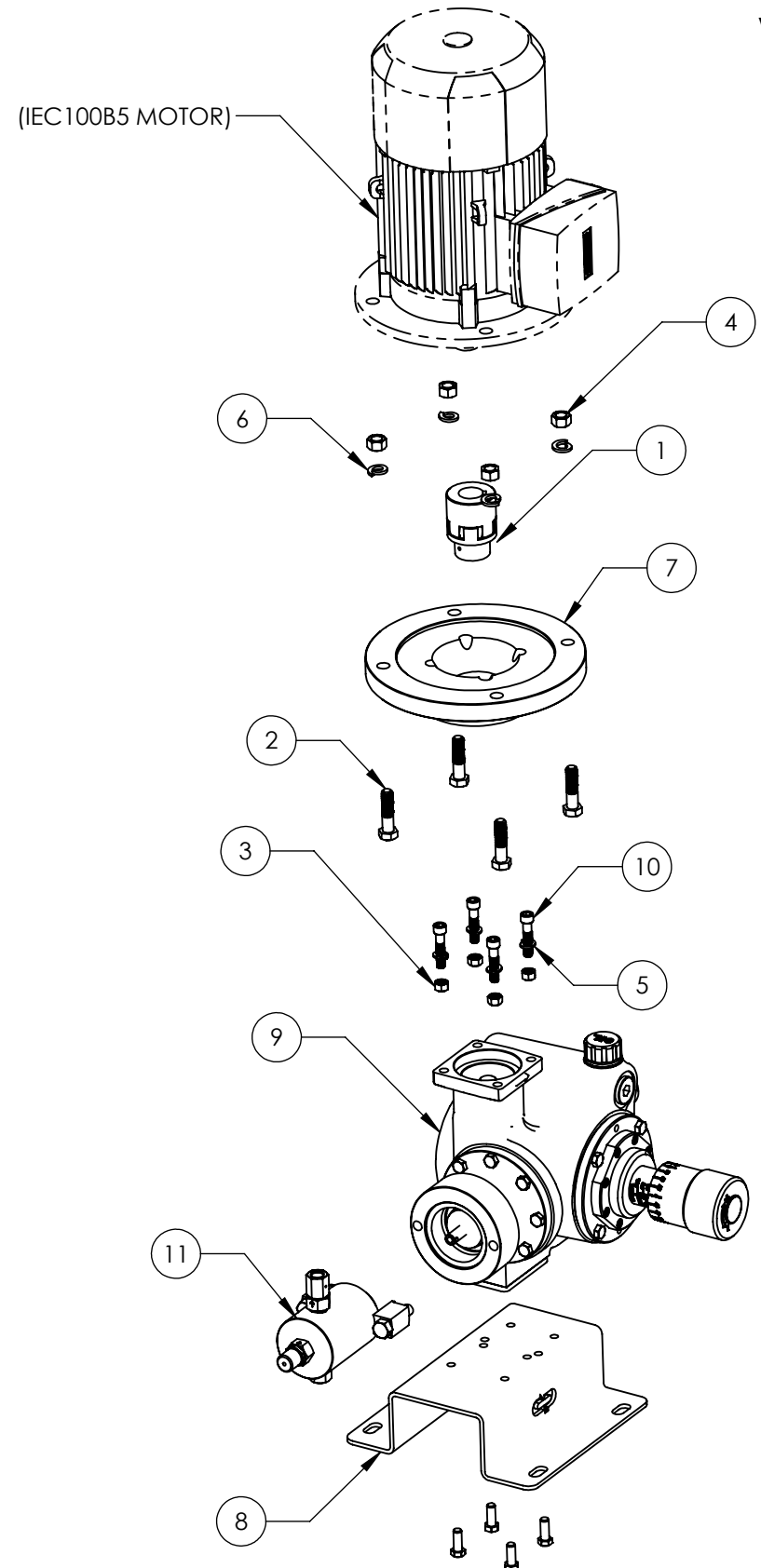
3/8" CERAMIC FKM

ITEM NO.	PART NUMBER	BOM Desc	QTY.
1	CUPBAPM-M19-M28-R	COUPLING	1
2	HHBS6081332	BOLT	4
3	HHNS60616	NUT	4
4	HHNS60813	NUT	4
5	HLWS6106	WASHER	4
6	HLWS6108	WASHER	4
7	SLA0003-05	FLANGE	1
8	SLA0004-01	SUPPORT	1
9	SLA1000-V101	DRIVE ASSY VERTICAL	1
10	SSCS6061628	SCREW	4
11	W50D306CNQ3Q6	WET END ASSY	1

3/8" CERAMIC FFKM

ITEM NO.	PART NUMBER	BOM Desc	QTY.
1	CUPBAPM-M19-M28-R	COUPLING	1
2	HHBS6081332	BOLT	4
3	HHNS60616	NUT	4
4	HHNS60813	NUT	4
5	HLWS6106	WASHER	4
6	HLWS6108	WASHER	4
7	SLA0003-05	FLANGE	1
8	SLA0004-01	SUPPORT	1
9	SLA1000-V101	DRIVE ASSY VERTICAL	1
10	SSCS6061628	SCREW	4
11	W50D306CNF3F6	WET END ASSY	1

VERTICAL SLA-P WITH NON-ADJUSTABLE 3/8" INJECTION HEAD



PROPRIETARY AND CONFIDENTIAL
 THE INFORMATION CONTAINED HEREIN IS PROPRIETARY TO CHECKPOINT SYSTEMS AND SHALL NOT BE REPRODUCED OR DISCLOSED IN WHOLE OR IN PART OR USED FOR ANY PURPOSE EXCEPT WHEN SUCH USER POSSESSES DIRECT WRITTEN AUTHORIZATION FROM CHECKPOINT SYSTEMS

-- DO NOT SCALE DRAWING --

DOC EFF - 03/03/20		CheckPoint Pumps & Systems	
CHECKPOINT PUMPS & SYSTEMS 21356 MARION LANE MANDEVILLE, LA 70471 USA TEL 504.340.0770 -- FAX 888.217.6402		DWG. TITLE VERTICAL SLA IEC100 MOTOR 3/8" ASSY	
REV 00	MKT-SLA-TASPV-PL	SIZE B	
DRAWING NUMBER		SHEET 5 OF 33	

3/8" CERAMIC HLC

ITEM NO.	PART NUMBER	BOM Desc	QTY.
1	CUPAAPM-E07-M19-R	COUPLING	1
2	HHBS6061616	BOLT	4
3	HHNS60616	NUT	4
4	HLWS6106	WASHER	4
5	SLA0003-01	FLANGE	1
6	SLA0004-01	SUPPORT	1
7	SLA1000-V101	DRIVE ASSY VERTICAL	1
8	SSCS6061628	SCREW	4
9	W50D306CNH3H6	WET END ASSY	1

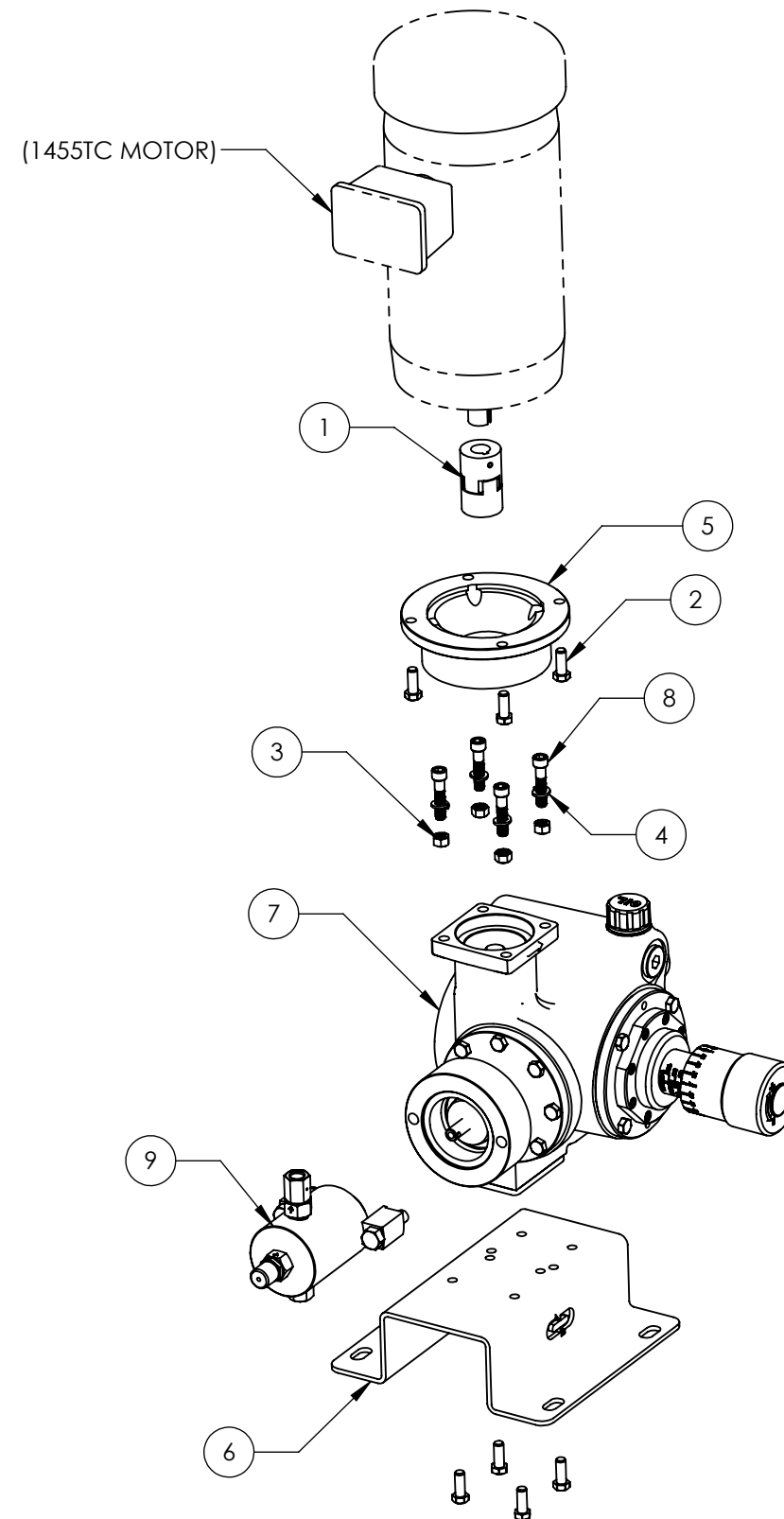
3/8" CERAMIC FKM

ITEM NO.	PART NUMBER	BOM Desc	QTY.
1	CUPAAPM-E07-M19-R	COUPLING	1
2	HHBS6061616	BOLT	4
3	HHNS60616	NUT	4
4	HLWS6106	WASHER	4
5	SLA0003-01	FLANGE	1
6	SLA0004-01	SUPPORT	1
7	SLA1000-V101	DRIVE ASSY VERTICAL	1
8	SSCS6061628	SCREW	4
9	W50D306CNQ3Q6	WET END ASSY	1

3/8" CERAMIC FFKM

ITEM NO.	PART NUMBER	BOM Desc	QTY.
1	CUPAAPM-E07-M19-R	COUPLING	1
2	HHBS6061616	BOLT	4
3	HHNS60616	NUT	4
4	HLWS6106	WASHER	4
5	SLA0003-01	FLANGE	1
6	SLA0004-01	SUPPORT	1
7	SLA1000-V101	DRIVE ASSY VERTICAL	1
8	SSCS6061628	SCREW	4
9	W50D306CNF3F6	WET END ASSY	1

VERTICAL SLA-P WITH NON-ADJUSTABLE 3/8" INJECTION HEAD



PROPRIETARY AND CONFIDENTIAL
 THE INFORMATION CONTAINED HEREIN IS PROPRIETARY TO CHECKPOINT SYSTEMS AND SHALL NOT BE REPRODUCED OR DISCLOSED IN WHOLE OR IN PART OR USED FOR ANY PURPOSE EXCEPT WHEN SUCH USER POSSESSES DIRECT WRITTEN AUTHORIZATION FROM CHECKPOINT SYSTEMS

-- DO NOT SCALE DRAWING --

DOC EFF - 03/03/20			
		DWG. TITLE VERTICAL SLA 143TC MOTOR 3/8" ASSY	
REV	00	MKT-SLA-TASPV-PL	SIZE B
DRAWING NUMBER		SHEET 6 OF 33	

3/8" CERAMIC HLC

ITEM NO.	PART NUMBER	BOM Desc	QTY.
1	CUPBAPM-E09-M19-R	COUPLING	1
2	HHBS6081320	BOLT	4
3	HHNS60616	NUT	4
4	HLWS6106	WASHER	4
5	SLA0003-02	FLANGE	1
6	SLA0004-01	SUPPORT	1
7	SLA1000-V101	DRIVE ASSY VERTICAL	1
8	SSCS6061628	SCREW	4
9	W50D306CNH3H6	WET END ASSY	1

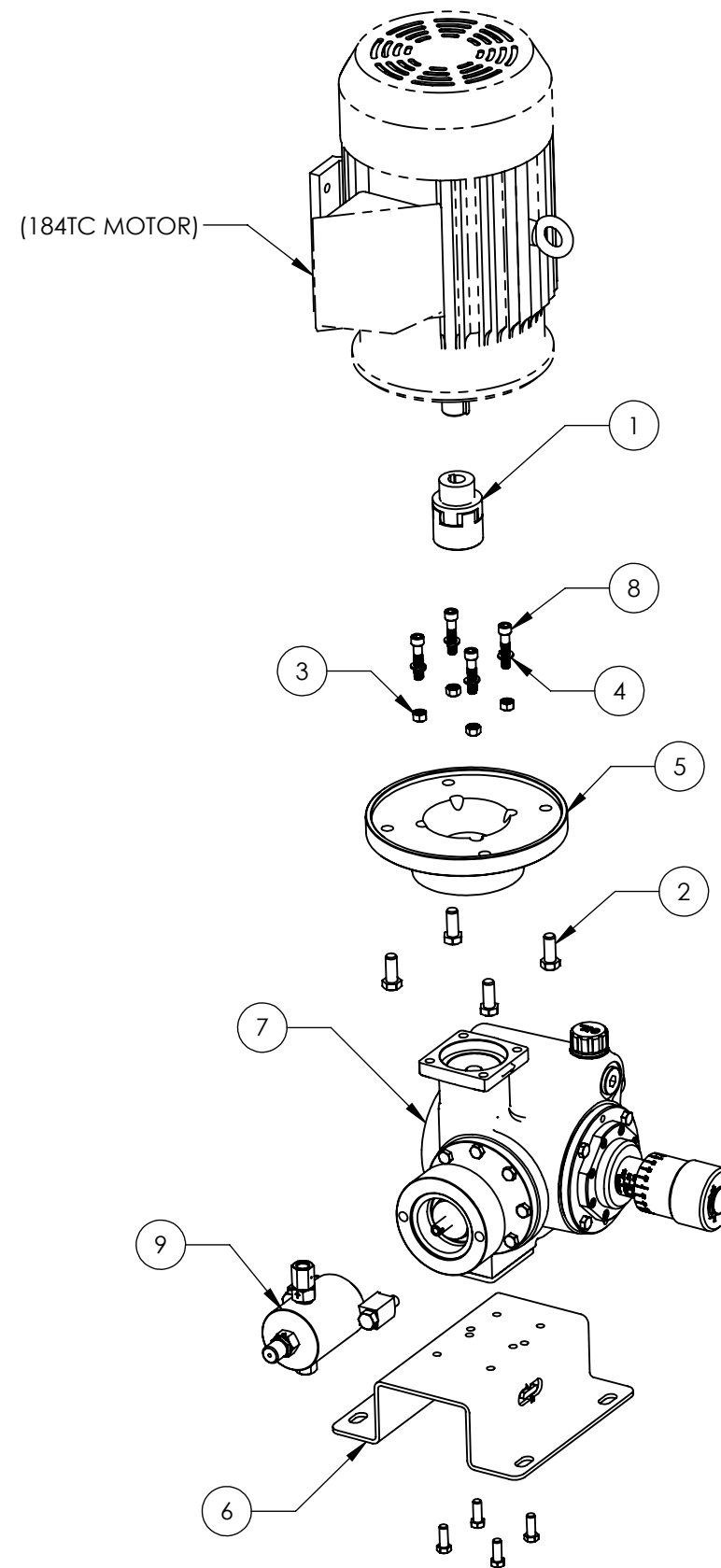
3/8" CERAMIC FKM

ITEM NO.	PART NUMBER	BOM Desc	QTY.
1	CUPBAPM-E09-M19-R	COUPLING	1
2	HHBS6081320	BOLT	4
3	HHNS60616	NUT	4
4	HLWS6106	WASHER	4
5	SLA0003-02	FLANGE	1
6	SLA0004-01	SUPPORT	1
7	SLA1000-V101	DRIVE ASSY VERTICAL	1
8	SSCS6061628	SCREW	4
9	W50D306CNQ3Q6	WET END ASSY	1

3/8" CERAMIC FFKM

ITEM NO.	PART NUMBER	BOM Desc	QTY.
1	CUPBAPM-E09-M19-R	COUPLING	1
2	HHBS6081320	BOLT	4
3	HHNS60616	NUT	4
4	HLWS6106	WASHER	4
5	SLA0003-02	FLANGE	1
6	SLA0004-01	SUPPORT	1
7	SLA1000-V101	DRIVE ASSY VERTICAL	1
8	SSCS6061628	SCREW	4
9	W50D306CNF3F6	WET END ASSY	1

VERTICAL SLA-P WITH NON-ADJUSTABLE 3/8" INJECTION HEAD



PROPRIETARY AND CONFIDENTIAL
 THE INFORMATION CONTAINED HEREIN IS PROPRIETARY TO CHECKPOINT SYSTEMS AND SHALL NOT BE REPRODUCED OR DISCLOSED IN WHOLE OR IN PART OR USED FOR ANY PURPOSE EXCEPT WHEN SUCH USER POSSESSES DIRECT WRITTEN AUTHORIZATION FROM CHECKPOINT SYSTEMS

-- DO NOT SCALE DRAWING --

DOC EFF - 03/03/20			
		DWG. TITLE VERTICAL SLA 184TC MOTOR 3/8" ASSY	
REV	00	MKT-SLA-TASPV-PL	SIZE B
DRAWING NUMBER		SHEET 7 OF 33	

1/2" CERAMIC HLC

ITEM NO.	PART NUMBER	BOM Desc	QTY.
1	CUPAAPM-E05-M19-R	COUPLING	1
2	HHBS6061616	BOLT	4
3	HHNS60616	NUT	4
4	HLWS6106	WASHER	4
5	SLA0003-01	FLANGE	1
6	SLA0004-01	SUPPORT	1
7	SLA1000-V101	DRIVE ASSY VERTICAL	1
8	SSCS6061628	SCREW	4
9	W50M308CNH3H6	WET END ASSY	1

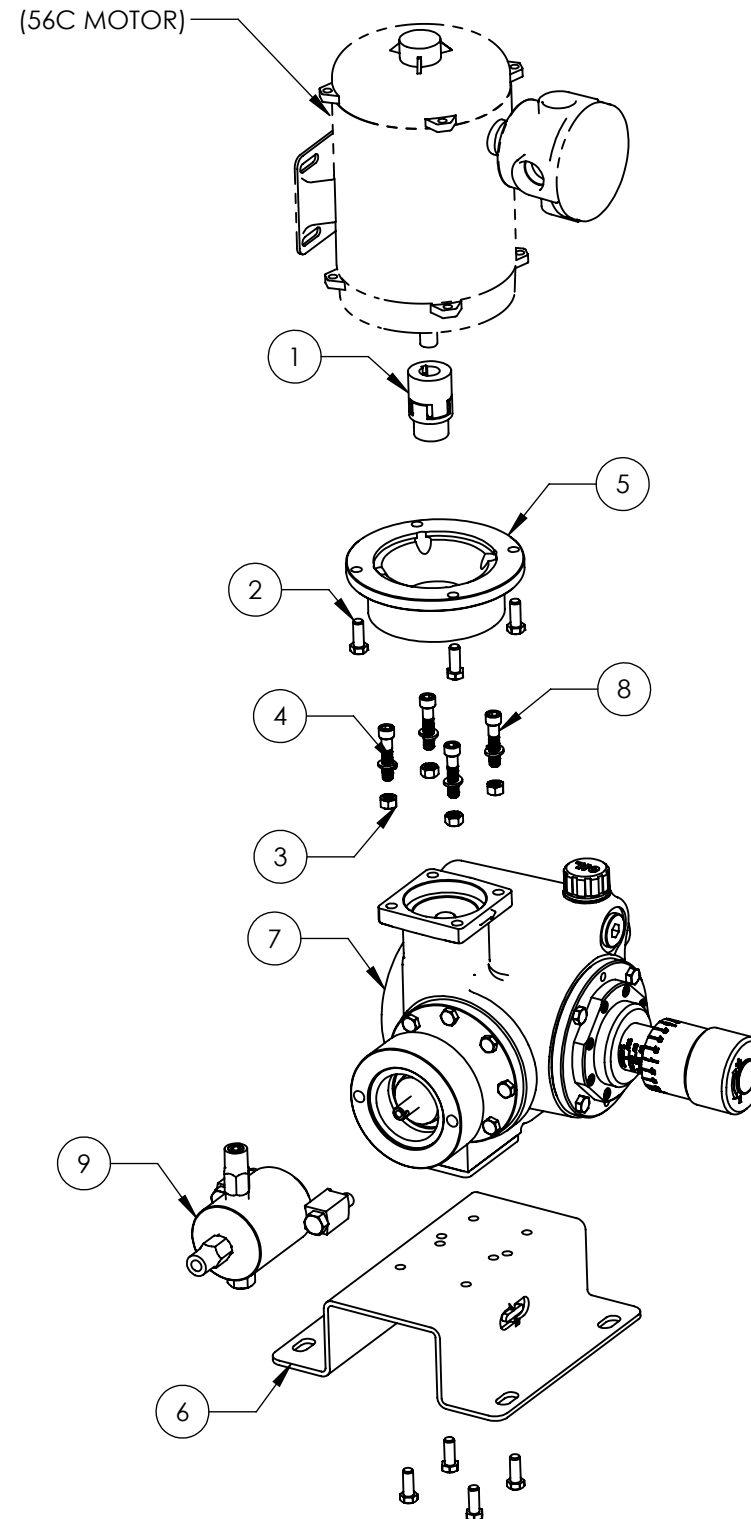
1/2" CERAMIC FKM

ITEM NO.	PART NUMBER	BOM Desc	QTY.
1	CUPAAPM-E05-M19-R	COUPLING	1
2	HHBS6061616	BOLT	4
3	HHNS60616	NUT	4
4	HLWS6106	WASHER	4
5	SLA0003-01	FLANGE	1
6	SLA0004-01	SUPPORT	1
7	SLA1000-V101	DRIVE ASSY VERTICAL	1
8	SSCS6061628	SCREW	4
9	W50M308CNQ3Q6	WET END ASSY	1

1/2" CERAMIC FFKM

ITEM NO.	PART NUMBER	BOM Desc	QTY.
1	CUPAAPM-E05-M19-R	COUPLING	1
2	HHBS6061616	BOLT	4
3	HHNS60616	NUT	4
4	HLWS6106	WASHER	4
5	SLA0003-01	FLANGE	1
6	SLA0004-01	SUPPORT	1
7	SLA1000-V101	DRIVE ASSY VERTICAL	1
8	SSCS6061628	SCREW	4
9	W50M308CNF3F6	WET END ASSY	1

VERTICAL SLA-P WITH NON-ADJUSTABLE 1/2" INJECTION HEAD



PROPRIETARY AND CONFIDENTIAL
 THE INFORMATION CONTAINED HEREIN IS PROPRIETARY TO CHECKPOINT SYSTEMS AND SHALL NOT BE REPRODUCED OR DISCLOSED IN WHOLE OR IN PART OR USED FOR ANY PURPOSE EXCEPT WHEN SUCH USER POSSESSES DIRECT WRITTEN AUTHORIZATION FROM CHECKPOINT SYSTEMS

-- DO NOT SCALE DRAWING --

DOC EFF - 03/03/20			
		DWG. TITLE VERTICAL SLA 56C MOTOR 1/2" ASSY	
REV 00	MKT-SLA-TASPV-PL	SIZE B	
DRAWING NUMBER		SHEET 8 OF 33	

1/2" CERAMIC HLC

ITEM NO.	PART NUMBER	BOM Desc	QTY.
1	CUPAAPM-M14-M19-R	COUPLING	1
2	HHBS6051816	BOLT	4
3	HHBS6061616	BOLT	4
4	SLA0003-06	FLANGE	1
5	SLA0004-01	SUPPORT	1
6	SLA1000-V101	DRIVE ASSY VERTICAL	1
7	W50M308CNH3H6	WET END ASSY	1

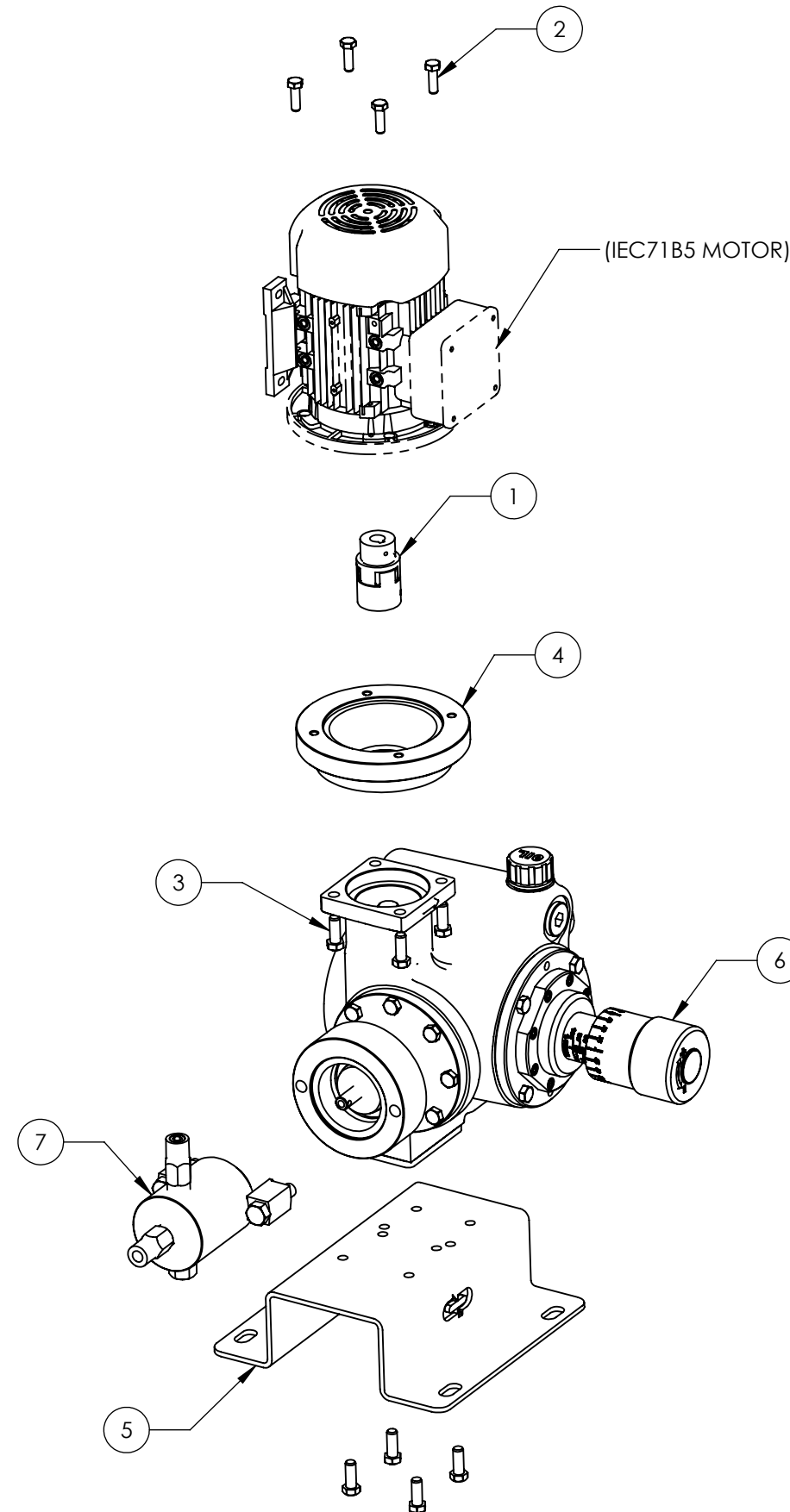
1/2" CERAMIC FKM

ITEM NO.	PART NUMBER	BOM Desc	QTY.
1	CUPAAPM-M14-M19-R	COUPLING	1
2	HHBS6051816	BOLT	4
3	HHBS6061616	BOLT	4
4	SLA0003-06	FLANGE	1
5	SLA0004-01	SUPPORT	1
6	SLA1000-V101	DRIVE ASSY VERTICAL	1
7	W50M308CNQ3Q6	WET END ASSY	1

1/2" CERAMIC FFKM

ITEM NO.	PART NUMBER	BOM Desc	QTY.
1	CUPAAPM-M14-M19-R	COUPLING	1
2	HHBS6051816	BOLT	4
3	HHBS6061616	BOLT	4
4	SLA0003-06	FLANGE	1
5	SLA0004-01	SUPPORT	1
6	SLA1000-V101	DRIVE ASSY VERTICAL	1
7	W50M308CNF3F6	WET END ASSY	1

VERTICAL SLA-P WITH NON-ADJUSTABLE 1/2" INJECTION HEAD



PROPRIETARY AND CONFIDENTIAL
 THE INFORMATION CONTAINED HEREIN IS PROPRIETARY TO CHECKPOINT SYSTEMS AND SHALL NOT BE REPRODUCED OR DISCLOSED IN WHOLE OR IN PART OR USED FOR ANY PURPOSE EXCEPT WHEN SUCH USER POSSESSES DIRECT WRITTEN AUTHORIZATION FROM CHECKPOINT SYSTEMS

-- DO NOT SCALE DRAWING --

DOC EFF - 03/03/20			
		DWG. TITLE VERTICAL SLA IEC71 MOTOR 1/2" ASSY	
REV	00	MKT-SLA-TASPV-PL	SIZE B
DRAWING NUMBER		SHEET 9 OF 33	

1/2" CERAMIC HLC

ITEM NO.	PART NUMBER	BOM Desc	QTY.
1	CUPAAPM-M19-M19-R	COUPLING	1
2	HHBS6071424	BOLT	4
3	HHNS60616	NUT	4
4	HHNS60714	NUT	4
5	HLWS6106	WASHER	4
6	HLWS6107	WASHER	4
7	SLA0003-03	FLANGE	1
8	SLA0004-01	SUPPORT	1
9	SLA1000-V101	DRIVE ASSY VERTICAL	1
10	SSCS6061628	SCREW	4
11	W50M308CNH3H6	WET END ASSY	1

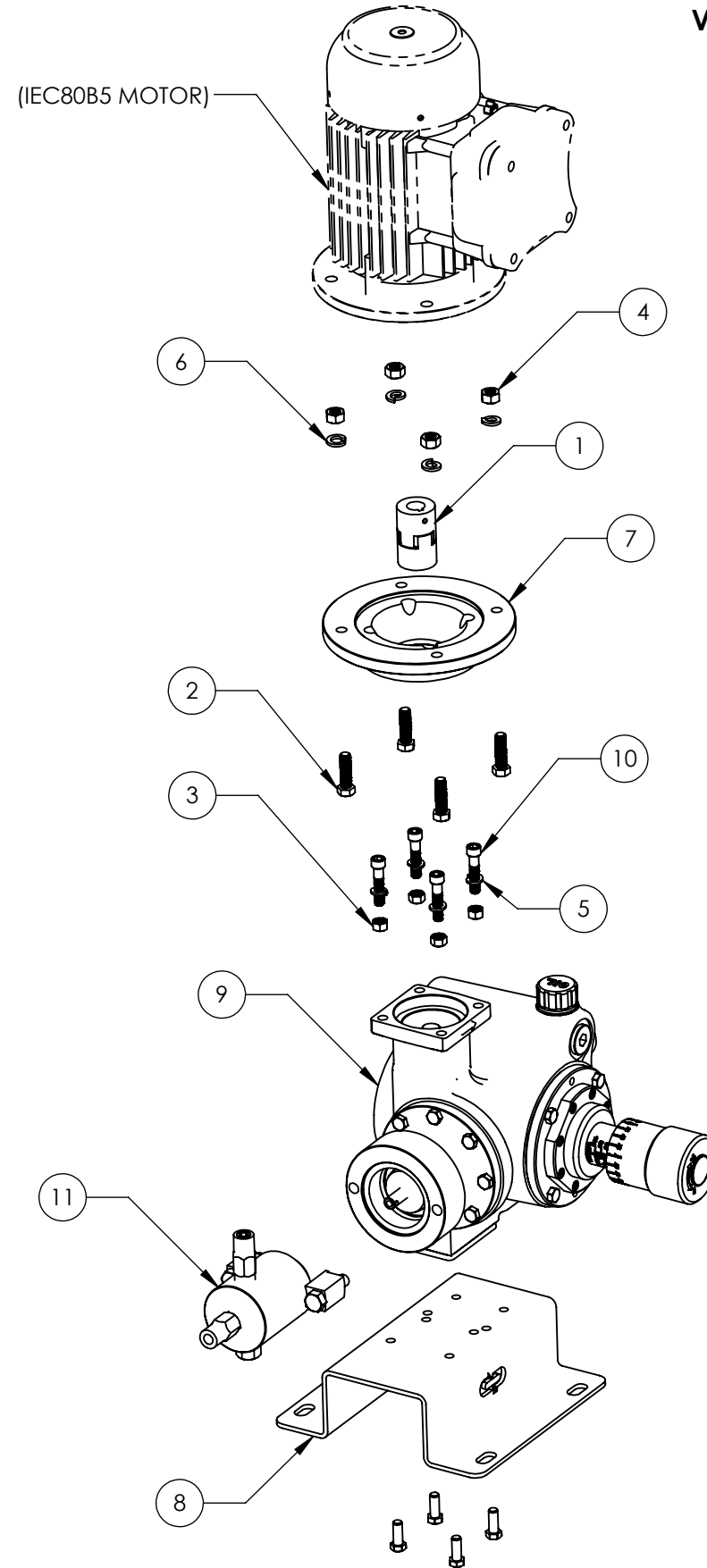
1/2" CERAMIC FKM

ITEM NO.	PART NUMBER	BOM Desc	QTY.
1	CUPAAPM-M19-M19-R	COUPLING	1
2	HHBS6071424	BOLT	4
3	HHNS60616	NUT	4
4	HHNS60714	NUT	4
5	HLWS6106	WASHER	4
6	HLWS6107	WASHER	4
7	SLA0003-03	FLANGE	1
8	SLA0004-01	SUPPORT	1
9	SLA1000-V101	DRIVE ASSY VERTICAL	1
10	SSCS6061628	SCREW	4
11	W50M308CNQ3Q6	WET END ASSY	1

1/2" CERAMIC FFKM

ITEM NO.	PART NUMBER	BOM Desc	QTY.
1	CUPAAPM-M19-M19-R	COUPLING	1
2	HHBS6071424	BOLT	4
3	HHNS60616	NUT	4
4	HHNS60714	NUT	4
5	HLWS6106	WASHER	4
6	HLWS6107	WASHER	4
7	SLA0003-03	FLANGE	1
8	SLA0004-01	SUPPORT	1
9	SLA1000-V101	DRIVE ASSY VERTICAL	1
10	SSCS6061628	SCREW	4
11	W50M308CNF3F6	WET END ASSY	1

VERTICAL SLA-P WITH NON-ADJUSTABLE 1/2" INJECTION HEAD



PROPRIETARY AND CONFIDENTIAL
 THE INFORMATION CONTAINED HEREIN IS PROPRIETARY TO CHECKPOINT SYSTEMS AND SHALL NOT BE REPRODUCED OR DISCLOSED IN WHOLE OR IN PART OR USED FOR ANY PURPOSE EXCEPT WHEN SUCH USER POSSESSES DIRECT WRITTEN AUTHORIZATION FROM CHECKPOINT SYSTEMS

-- DO NOT SCALE DRAWING --

DOC EFF - 03/03/20			
		DWG. TITLE VERTICAL SLA IEC80 MOTOR 1/2" ASSY	
REV 00	MKT-SLA-TASPV-PL	SIZE B	
DRAWING NUMBER		SHEET 10 OF 33	

1/2" CERAMIC HLC

ITEM NO.	PART NUMBER	BOM Desc	QTY.
1	CUPAAPM-M19-M24-R	COUPLING	1
2	HHBS6071424	BOLT	4
3	HHNS60616	NUT	4
4	HHNS60714	NUT	4
5	HLWS6106	WASHER	4
6	HLWS6107	WASHER	4
7	SLA0003-04	FLANGE	1
8	SLA0004-01	SUPPORT	1
9	SLA1000-V101	DRIVE ASSY VERTICAL	1
10	SSCS6061628	SCREW	4
11	W50M308CNH3H6	WET END ASSY	1

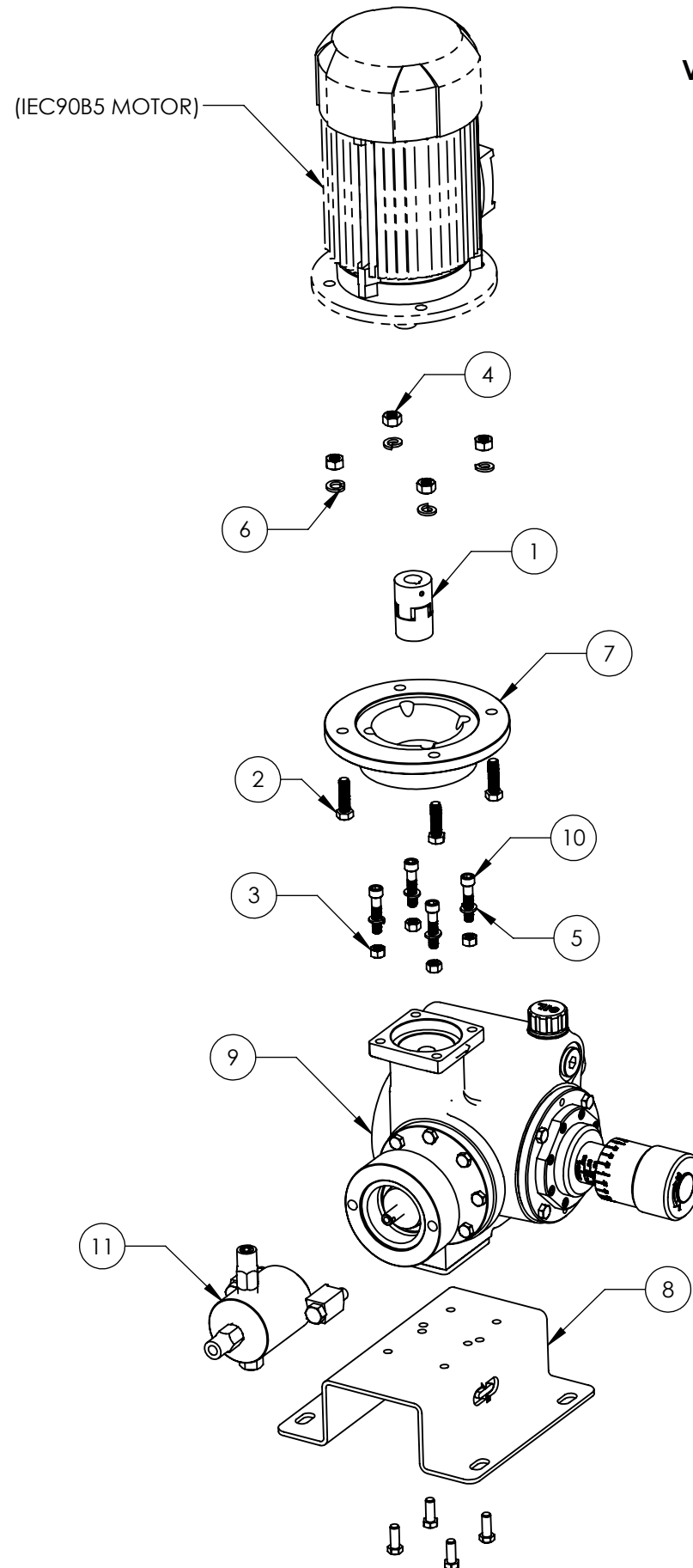
1/2" CERAMIC FKM

ITEM NO.	PART NUMBER	BOM Desc	QTY.
1	CUPAAPM-M19-M24-R	COUPLING	1
2	HHBS6071424	BOLT	4
3	HHNS60616	NUT	4
4	HHNS60714	NUT	4
5	HLWS6106	WASHER	4
6	HLWS6107	WASHER	4
7	SLA0003-04	FLANGE	1
8	SLA0004-01	SUPPORT	1
9	SLA1000-V101	DRIVE ASSY VERTICAL	1
10	SSCS6061628	SCREW	4
11	W50M308CNQ3Q6	WET END ASSY	1

1/2" CERAMIC FFKM

ITEM NO.	PART NUMBER	BOM Desc	QTY.
1	CUPAAPM-M19-M24-R	COUPLING	1
2	HHBS6071424	BOLT	4
3	HHNS60616	NUT	4
4	HHNS60714	NUT	4
5	HLWS6106	WASHER	4
6	HLWS6107	WASHER	4
7	SLA0003-04	FLANGE	1
8	SLA0004-01	SUPPORT	1
9	SLA1000-V101	DRIVE ASSY VERTICAL	1
10	SSCS6061628	SCREW	4
11	W50M308CNF3F6	WET END ASSY	1

VERTICAL SLA-P WITH NON-ADJUSTABLE 1/2" INJECTION HEAD



PROPRIETARY AND CONFIDENTIAL
 THE INFORMATION CONTAINED HEREIN IS PROPRIETARY TO CHECKPOINT SYSTEMS AND SHALL NOT BE REPRODUCED OR DISCLOSED IN WHOLE OR IN PART OR USED FOR ANY PURPOSE EXCEPT WHEN SUCH USER POSSESSES DIRECT WRITTEN AUTHORIZATION FROM CHECKPOINT SYSTEMS

-- DO NOT SCALE DRAWING --

DOC EFF - 03/03/20			
		DWG. TITLE VERTICAL SLA IEC90 MOTOR 1/2" ASSY	
REV 00	MKT-SLA-TASPV-PL	SIZE B	
DRAWING NUMBER		SHEET 11 OF 33	

1/2" CERAMIC HLC

ITEM NO.	PART NUMBER	BOM Desc	QTY.
1	CUPBAPM-M19-M28-R	COUPLING	1
2	HHBS6081332	BOLT	4
3	HHNS60616	NUT	4
4	HHNS60813	NUT	4
5	HLWS6106	WASHER	4
6	HLWS6108	WASHER	4
7	SLA0003-05	FLANGE	1
8	SLA0004-01	SUPPORT	1
9	SLA1000-V101	DRIVE ASSY VERTICAL	1
10	SSCS6061628	SCREW	4
11	W50M308CNH3H6	WET END ASSY	1

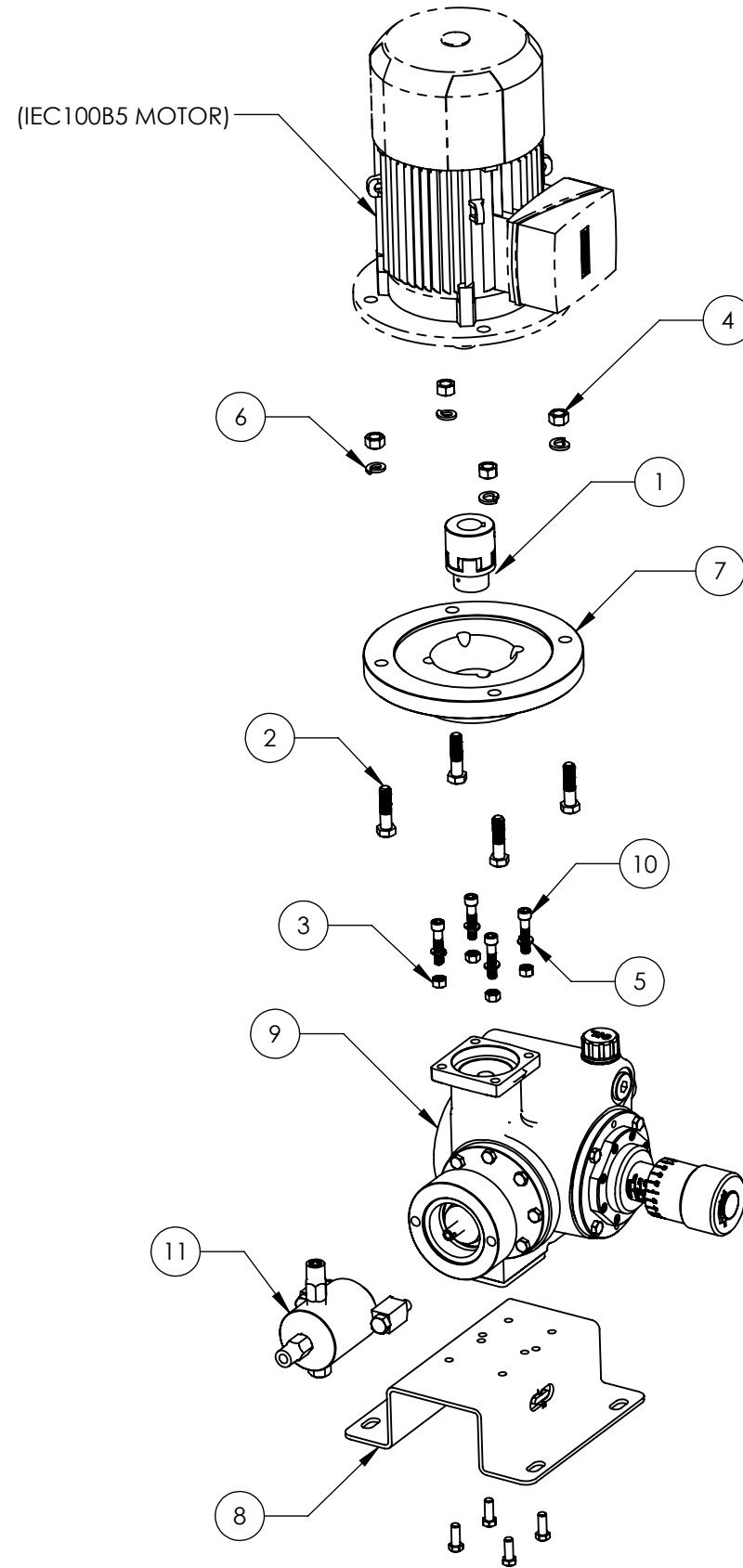
1/2" CERAMIC FKM

ITEM NO.	PART NUMBER	BOM Desc	QTY.
1	CUPBAPM-M19-M28-R	COUPLING	1
2	HHBS6081332	BOLT	4
3	HHNS60616	NUT	4
4	HHNS60813	NUT	4
5	HLWS6106	WASHER	4
6	HLWS6108	WASHER	4
7	SLA0003-05	FLANGE	1
8	SLA0004-01	SUPPORT	1
9	SLA1000-V101	DRIVE ASSY VERTICAL	1
10	SSCS6061628	SCREW	4
11	W50M308CNQ3Q6	WET END ASSY	1

1/2" CERAMIC FFKM

ITEM NO.	PART NUMBER	BOM Desc	QTY.
1	CUPBAPM-M19-M28-R	COUPLING	1
2	HHBS6081332	BOLT	4
3	HHNS60616	NUT	4
4	HHNS60813	NUT	4
5	HLWS6106	WASHER	4
6	HLWS6108	WASHER	4
7	SLA0003-05	FLANGE	1
8	SLA0004-01	SUPPORT	1
9	SLA1000-V101	DRIVE ASSY VERTICAL	1
10	SSCS6061628	SCREW	4
11	W50M308CNF3F6	WET END ASSY	1

VERTICAL SLA-P WITH NON-ADJUSTABLE 1/2" INJECTION HEAD



PROPRIETARY AND CONFIDENTIAL
 THE INFORMATION CONTAINED HEREIN IS PROPRIETARY TO CHECKPOINT SYSTEMS AND SHALL NOT BE REPRODUCED OR DISCLOSED IN WHOLE OR IN PART OR USED FOR ANY PURPOSE EXCEPT WHEN SUCH USER POSSESSES DIRECT WRITTEN AUTHORIZATION FROM CHECKPOINT SYSTEMS

-- DO NOT SCALE DRAWING --

DOC EFF - 03/03/20			
		DWG. TITLE VERTICAL SLA IEC100 MOTOR 1/2" ASSY	
REV 00	MKT-SLA-TASPV-PL	SIZE B	
DRAWING NUMBER		SHEET 12 OF 33	

1/2" CERAMIC HLC

ITEM NO.	PART NUMBER	BOM Desc	QTY.
1	CUPAAPM-E07-M19-R	COUPLING	1
2	HHBS6061616	BOLT	4
3	HHNS60616	NUT	4
4	HLWS6106	WASHER	4
5	SLA0003-01	FLANGE	1
6	SLA0004-01	SUPPORT	1
7	SLA1000-V101	DRIVE ASSY VERTICAL	1
8	SSCS6061628	SCREW	4
9	W50M308CNH3H6	WET END ASSY	1

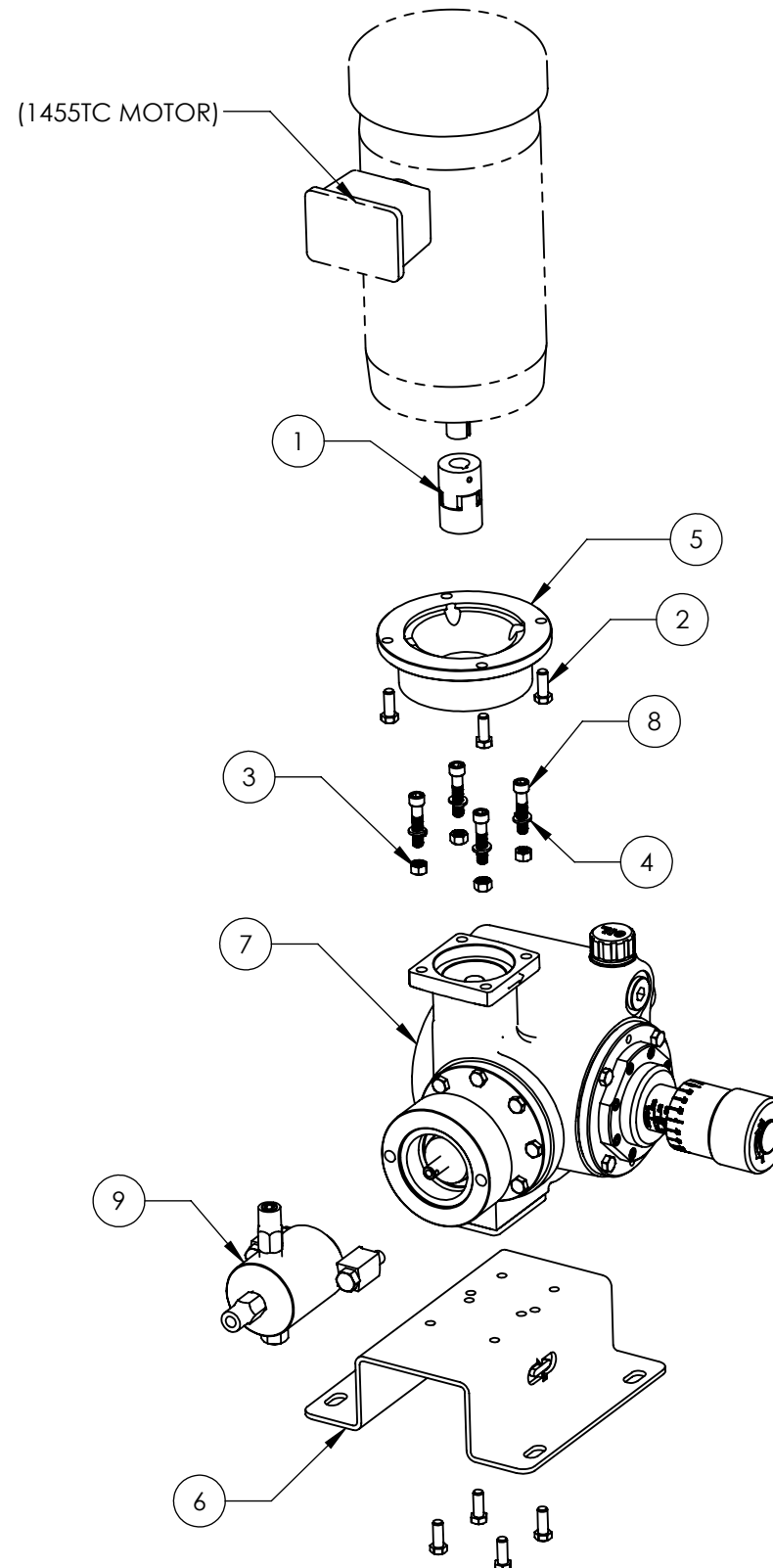
1/2" CERAMIC FKM

ITEM NO.	PART NUMBER	BOM Desc	QTY.
1	CUPAAPM-E07-M19-R	COUPLING	1
2	HHBS6061616	BOLT	4
3	HHNS60616	NUT	4
4	HLWS6106	WASHER	4
5	SLA0003-01	FLANGE	1
6	SLA0004-01	SUPPORT	1
7	SLA1000-V101	DRIVE ASSY VERTICAL	1
8	SSCS6061628	SCREW	4
9	W50M308CNQ3Q6	WET END ASSY	1

1/2" CERAMIC FFKM

ITEM NO.	PART NUMBER	BOM Desc	QTY.
1	CUPAAPM-E07-M19-R	COUPLING	1
2	HHBS6061616	BOLT	4
3	HHNS60616	NUT	4
4	HLWS6106	WASHER	4
5	SLA0003-01	FLANGE	1
6	SLA0004-01	SUPPORT	1
7	SLA1000-V101	DRIVE ASSY VERTICAL	1
8	SSCS6061628	SCREW	4
9	W50M308CNF3F6	WET END ASSY	1

VERTICAL SLA-P WITH NON-ADJUSTABLE 1/2" INJECTION HEAD



PROPRIETARY AND CONFIDENTIAL
 THE INFORMATION CONTAINED HEREIN IS PROPRIETARY TO CHECKPOINT SYSTEMS AND SHALL NOT BE REPRODUCED OR DISCLOSED IN WHOLE OR IN PART OR USED FOR ANY PURPOSE EXCEPT WHEN SUCH USER POSSESSES DIRECT WRITTEN AUTHORIZATION FROM CHECKPOINT SYSTEMS

-- DO NOT SCALE DRAWING --

DOC EFF - 03/03/20			
		DWG. TITLE VERTICAL SLA 143TC MOTOR 1/2" ASSY	
REV 00	MKT-SLA-TASPV-PL	SIZE B	
DRAWING NUMBER		SHEET 13 OF 33	

1/2" CERAMIC HLC

ITEM NO.	PART NUMBER	BOM Desc	QTY.
1	CUPBAPM-E09-M19-R	COUPLING	1
2	HHBS6081320	BOLT	4
3	HHNS60616	NUT	4
4	HLWS6106	WASHER	4
5	SLA0003-02	FLANGE	1
6	SLA0004-01	SUPPORT	1
7	SLA1000-V101	DRIVE ASSY VERTICAL	1
8	SSCS6061628	SCREW	4
9	W50M308CNH3H6	WET END ASSY	1

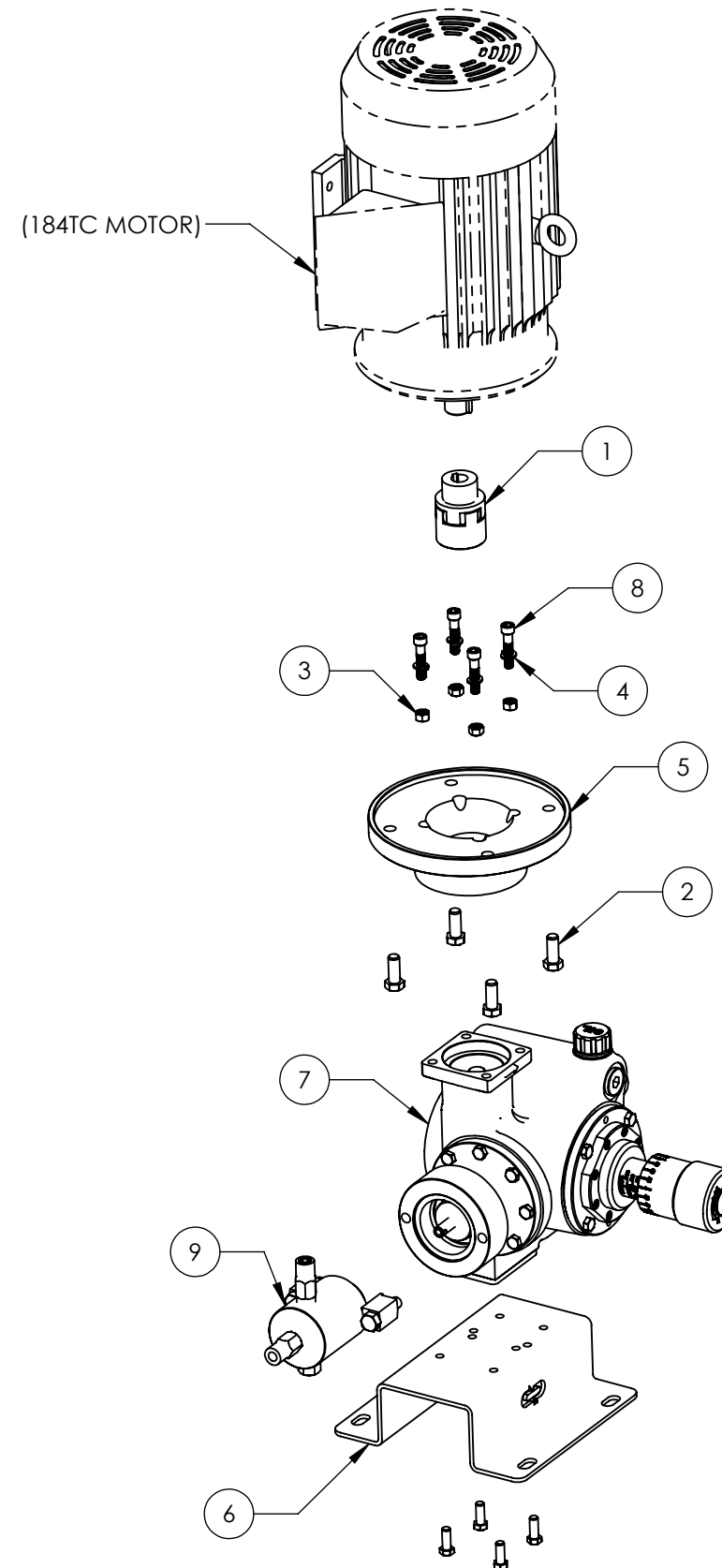
1/2" CERAMIC FKM

ITEM NO.	PART NUMBER	BOM Desc	QTY.
1	CUPBAPM-E09-M19-R	COUPLING	1
2	HHBS6081320	BOLT	4
3	HHNS60616	NUT	4
4	HLWS6106	WASHER	4
5	SLA0003-02	FLANGE	1
6	SLA0004-01	SUPPORT	1
7	SLA1000-V101	DRIVE ASSY VERTICAL	1
8	SSCS6061628	SCREW	4
9	W50M308CNQ3Q6	WET END ASSY	1

1/2" CERAMIC FFKM

ITEM NO.	PART NUMBER	BOM Desc	QTY.
1	CUPBAPM-E09-M19-R	COUPLING	1
2	HHBS6081320	BOLT	4
3	HHNS60616	NUT	4
4	HLWS6106	WASHER	4
5	SLA0003-02	FLANGE	1
6	SLA0004-01	SUPPORT	1
7	SLA1000-V101	DRIVE ASSY VERTICAL	1
8	SSCS6061628	SCREW	4
9	W50M308CNF3F6	WET END ASSY	1

VERTICAL SLA-P WITH NON-ADJUSTABLE 1/2" INJECTION HEAD



PROPRIETARY AND CONFIDENTIAL
 THE INFORMATION CONTAINED HEREIN IS PROPRIETARY TO CHECKPOINT SYSTEMS AND SHALL NOT BE REPRODUCED OR DISCLOSED IN WHOLE OR IN PART OR USED FOR ANY PURPOSE EXCEPT WHEN SUCH USER POSSESSES DIRECT WRITTEN AUTHORIZATION FROM CHECKPOINT SYSTEMS

-- DO NOT SCALE DRAWING --

DOC EFF - 03/03/20			
		DWG. TITLE VERTICAL SLA 184TC MOTOR 1/2" ASSY	
REV	00	MKT-SLA-TASPV-PL	SIZE B
DRAWING NUMBER		SHEET 14 OF 33	

3/4" CERAMIC HLC

ITEM NO.	PART NUMBER	BOM Desc	QTY.
1	CUPAAPM-E05-M19-R	COUPLING	1
2	HHBS6061616	BOLT	4
3	HHNS60616	NUT	4
4	HLWS6106	WASHER	4
5	SLA0003-01	FLANGE	1
6	SLA0004-01	SUPPORT	1
7	SLA1000-V101	DRIVE ASSY VERTICAL	1
8	SSCS6061628	SCREW	4
9	W50M312CNH3H6	WET END ASSY	1

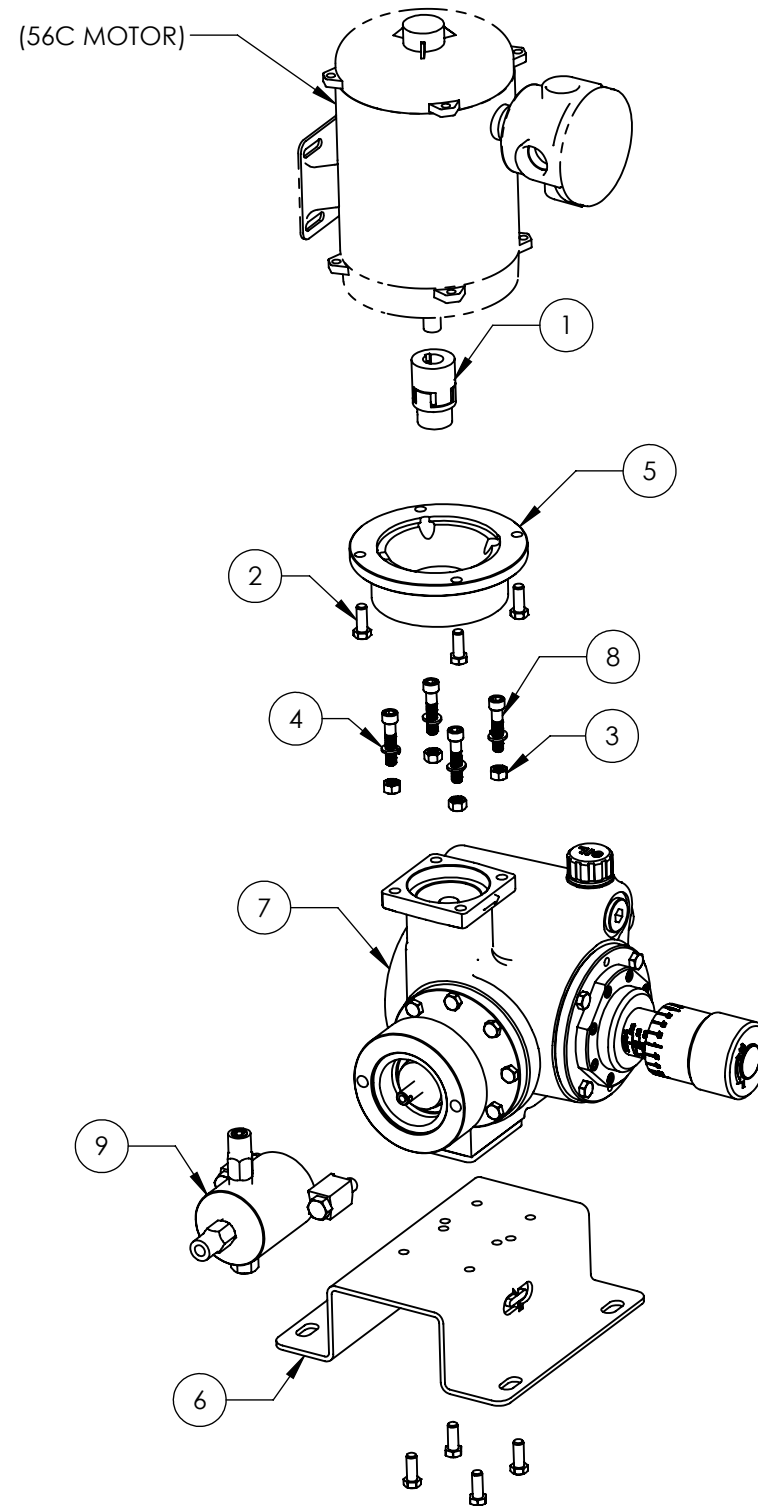
3/4" CERAMIC FKM

ITEM NO.	PART NUMBER	BOM Desc	QTY.
1	CUPAAPM-E05-M19-R	COUPLING	1
2	HHBS6061616	BOLT	4
3	HHNS60616	NUT	4
4	HLWS6106	WASHER	4
5	SLA0003-01	FLANGE	1
6	SLA0004-01	SUPPORT	1
7	SLA1000-V101	DRIVE ASSY VERTICAL	1
8	SSCS6061628	SCREW	4
9	W50M312CNQ3Q6	WET END ASSY	1

3/4" CERAMIC FFKM

ITEM NO.	PART NUMBER	BOM Desc	QTY.
1	CUPAAPM-E05-M19-R	COUPLING	1
2	HHBS6061616	BOLT	4
3	HHNS60616	NUT	4
4	HLWS6106	WASHER	4
5	SLA0003-01	FLANGE	1
6	SLA0004-01	SUPPORT	1
7	SLA1000-V101	DRIVE ASSY VERTICAL	1
8	SSCS6061628	SCREW	4
9	W50M312CNF3F6	WET END ASSY	1

VERTICAL SLA-P WITH NON-ADJUSTABLE 3/4" INJECTION HEAD



PROPRIETARY AND CONFIDENTIAL
 THE INFORMATION CONTAINED HEREIN IS PROPRIETARY TO CHECKPOINT SYSTEMS AND SHALL NOT BE REPRODUCED OR DISCLOSED IN WHOLE OR IN PART OR USED FOR ANY PURPOSE EXCEPT WHEN SUCH USER POSSESSES DIRECT WRITTEN AUTHORIZATION FROM CHECKPOINT SYSTEMS

-- DO NOT SCALE DRAWING --

DOC EFF - 03/03/20			
		DWG. TITLE VERTICAL SLA 56C MOTOR 3/4" ASSY	
REV	00	MKT-SLA-TASPV-PL	SIZE B
DRAWING NUMBER		SHEET 15 OF 33	

3/4" CERAMIC HLC

ITEM NO.	PART NUMBER	BOM Desc	QTY.
1	CUPAAPM-M14-M19-R	COUPLING	1
2	HHBS6051816	BOLT	4
3	HHBS6061616	BOLT	4
4	SLA0003-06	FLANGE	1
5	SLA0004-01	SUPPORT	1
6	SLA1000-V101	DRIVE ASSY VERTICAL	1
7	W50M312CNH3H6	WET END ASSY	1

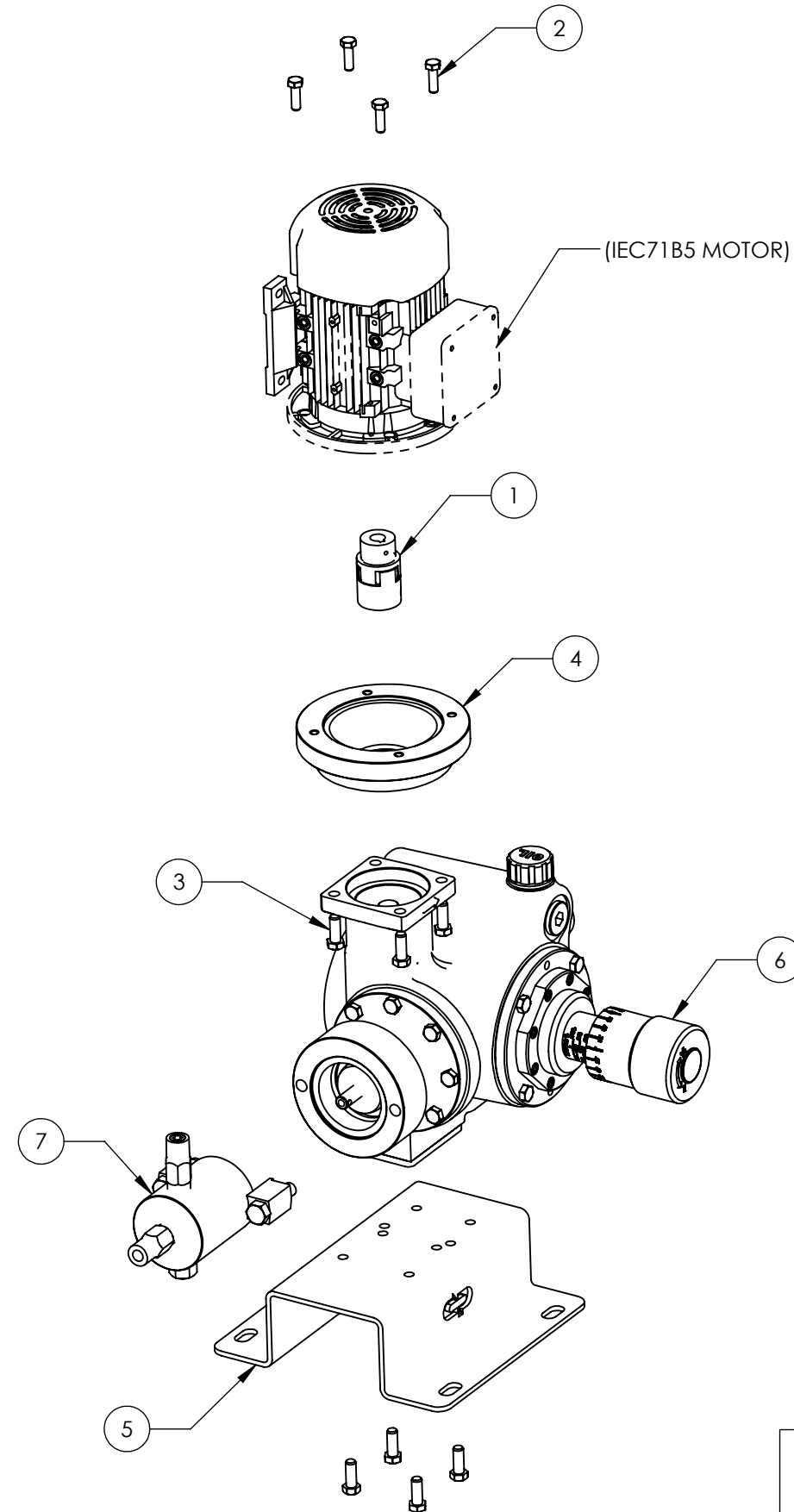
3/4" CERAMIC FKM

ITEM NO.	PART NUMBER	BOM Desc	QTY.
1	CUPAAPM-M14-M19-R	COUPLING	1
2	HHBS6051816	BOLT	4
3	HHBS6061616	BOLT	4
4	SLA0003-06	FLANGE	1
5	SLA0004-01	SUPPORT	1
6	SLA1000-V101	DRIVE ASSY VERTICAL	1
7	W50M312CNQ3Q6	WET END ASSY	1

3/4" CERAMIC FFKM

ITEM NO.	PART NUMBER	BOM Desc	QTY.
1	CUPAAPM-M14-M19-R	COUPLING	1
2	HHBS6051816	BOLT	4
3	HHBS6061616	BOLT	4
4	SLA0003-06	FLANGE	1
5	SLA0004-01	SUPPORT	1
6	SLA1000-V101	DRIVE ASSY VERTICAL	1
7	W50M312CNF3F6	WET END ASSY	1

VERTICAL SLA-P WITH NON-ADJUSTABLE 3/4" INJECTION HEAD



PROPRIETARY AND CONFIDENTIAL
 THE INFORMATION CONTAINED HEREIN IS PROPRIETARY TO CHECKPOINT SYSTEMS AND SHALL NOT BE REPRODUCED OR DISCLOSED IN WHOLE OR IN PART OR USED FOR ANY PURPOSE EXCEPT WHEN SUCH USER POSSESSES DIRECT WRITTEN AUTHORIZATION FROM CHECKPOINT SYSTEMS

-- DO NOT SCALE DRAWING --

DOC EFF - 03/03/20			
DWG. TITLE VERTICAL SLA IEC71 MOTOR 3/4" ASSY			
REV	00	MKT-SLA-TASPV-PL	SIZE B
DRAWING NUMBER			SHEET 16 OF 33

3/4" CERAMIC HLC

ITEM NO.	PART NUMBER	BOM Desc	QTY.
1	CUPAAPM-M19-M19-R	COUPLING	1
2	HHBS6071424	BOLT	4
3	HHNS60616	NUT	4
4	HHNS60714	NUT	4
5	HLWS6106	WASHER	4
6	HLWS6107	WASHER	4
7	SLA0003-03	FLANGE	1
8	SLA0004-01	SUPPORT	1
9	SLA1000-V101	DRIVE ASSY VERTICAL	1
10	SSCS6061628	SCREW	4
11	W50M312CNH3H6	WET END ASSY	1

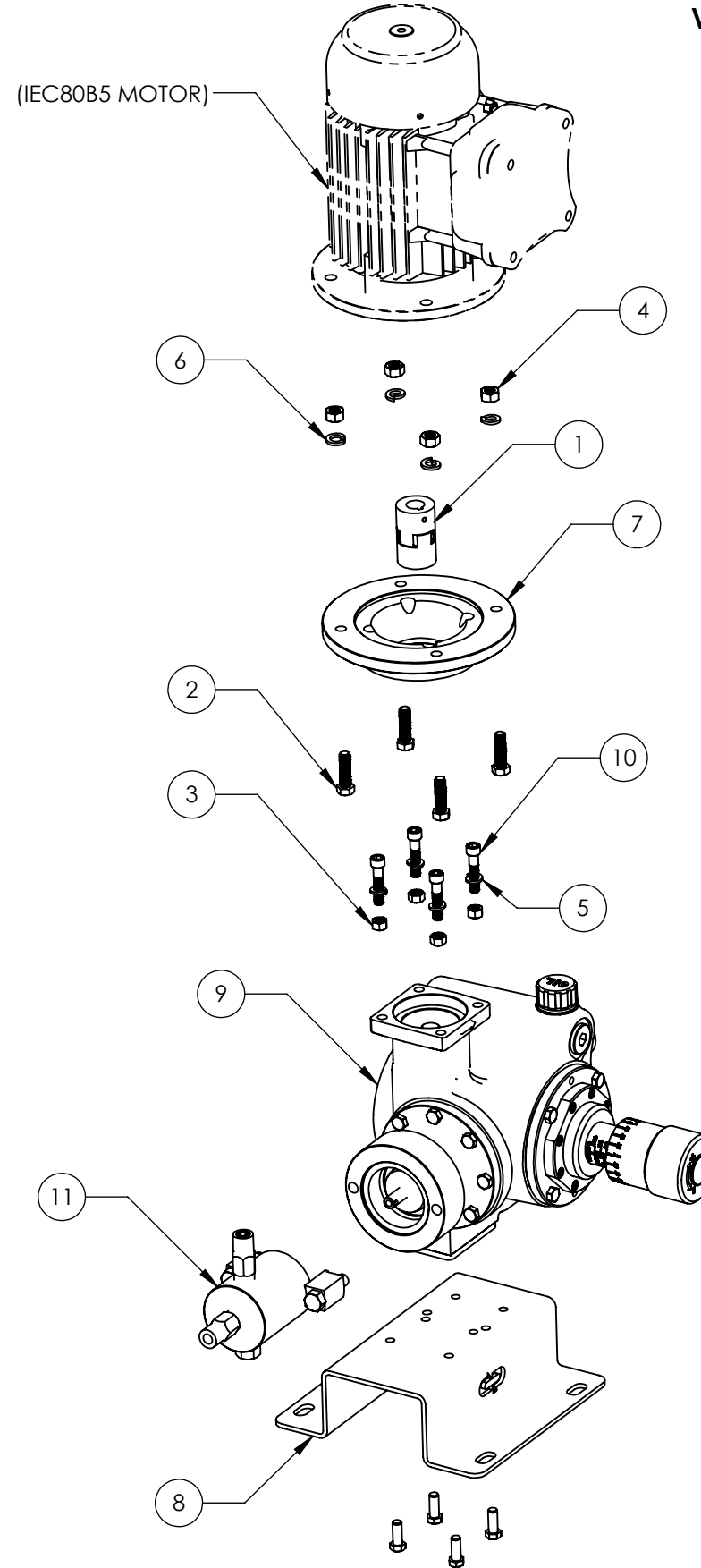
3/4" CERAMIC FKM

ITEM NO.	PART NUMBER	BOM Desc	QTY.
1	CUPAAPM-M19-M19-R	COUPLING	1
2	HHBS6071424	BOLT	4
3	HHNS60616	NUT	4
4	HHNS60714	NUT	4
5	HLWS6106	WASHER	4
6	HLWS6107	WASHER	4
7	SLA0003-03	FLANGE	1
8	SLA0004-01	SUPPORT	1
9	SLA1000-V101	DRIVE ASSY VERTICAL	1
10	SSCS6061628	SCREW	4
11	W50M312CNQ3Q6	WET END ASSY	1

3/4" CERAMIC FFKM

ITEM NO.	PART NUMBER	BOM Desc	QTY.
1	CUPAAPM-M19-M19-R	COUPLING	1
2	HHBS6071424	BOLT	4
3	HHNS60616	NUT	4
4	HHNS60714	NUT	4
5	HLWS6106	WASHER	4
6	HLWS6107	WASHER	4
7	SLA0003-03	FLANGE	1
8	SLA0004-01	SUPPORT	1
9	SLA1000-V101	DRIVE ASSY VERTICAL	1
10	SSCS6061628	SCREW	4
11	W50M312CNF3F6	WET END ASSY	1

VERTICAL SLA-P WITH NON-ADJUSTABLE 3/4" INJECTION HEAD



PROPRIETARY AND CONFIDENTIAL
 THE INFORMATION CONTAINED HEREIN IS PROPRIETARY TO CHECKPOINT SYSTEMS AND SHALL NOT BE REPRODUCED OR DISCLOSED IN WHOLE OR IN PART OR USED FOR ANY PURPOSE EXCEPT WHEN SUCH USER POSSESSES DIRECT WRITTEN AUTHORIZATION FROM CHECKPOINT SYSTEMS

-- DO NOT SCALE DRAWING --

DOC EFF - 03/03/20			
		DWG. TITLE VERTICAL SLA IEC80 MOTOR 3/4" ASSY	
REV	00	MKT-SLA-TASPV-PL	SIZE B
DRAWING NUMBER		SHEET 17 OF 33	

3/4" CERAMIC HLC

ITEM NO.	PART NUMBER	BOM Desc	QTY.
1	CUPAAPM-M19-M24-R	COUPLING	1
2	HHBS6071424	BOLT	4
3	HHNS60616	NUT	4
4	HHNS60714	NUT	4
5	HLWS6106	WASHER	4
6	HLWS6107	WASHER	4
7	SLA0003-04	FLANGE	1
8	SLA0004-01	SUPPORT	1
9	SLA1000-V101	DRIVE ASSY VERTICAL	1
10	SSCS6061628	SCREW	4
11	W50M312CNH3H6	WET END ASSY	1

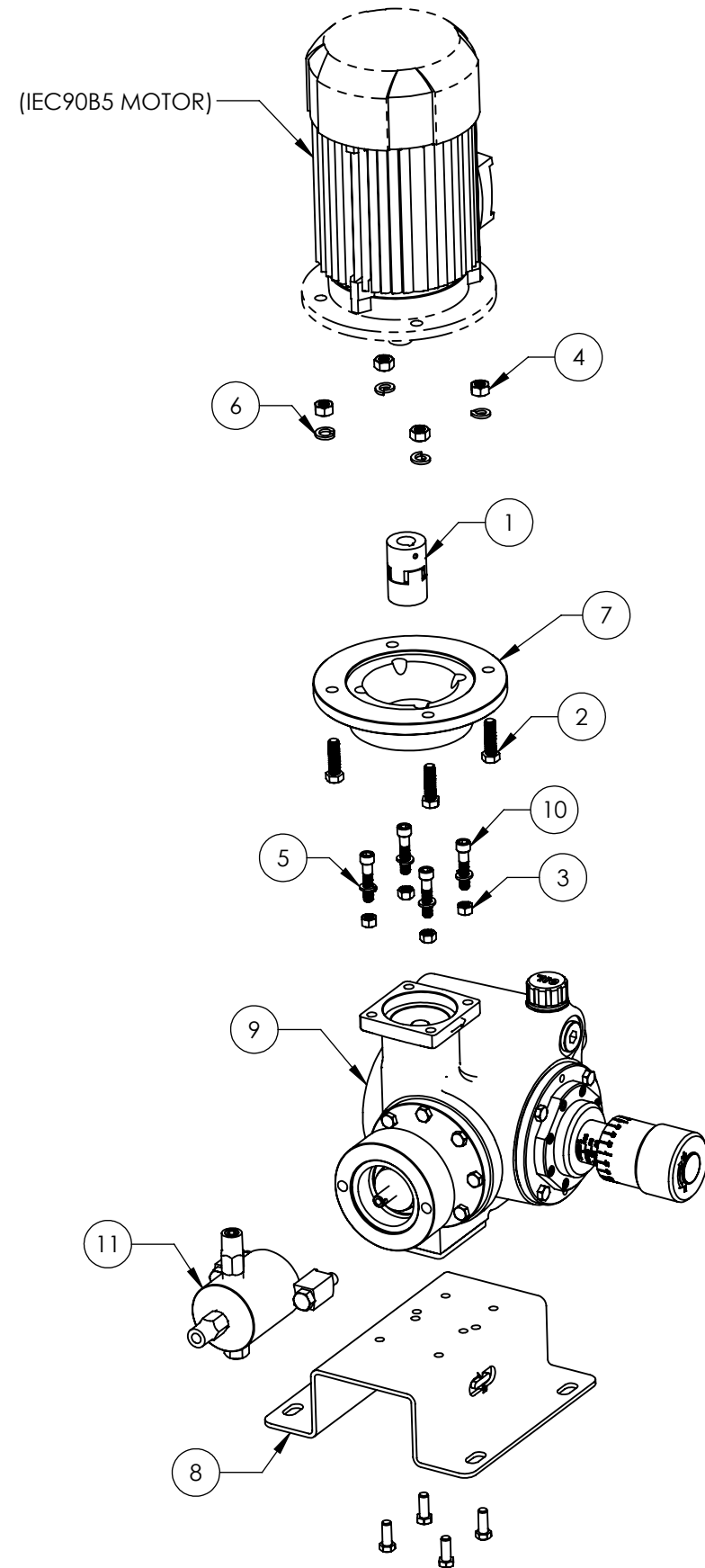
3/4" CERAMIC FKM

ITEM NO.	PART NUMBER	BOM Desc	QTY.
1	CUPAAPM-M19-M24-R	COUPLING	1
2	HHBS6071424	BOLT	4
3	HHNS60616	NUT	4
4	HHNS60714	NUT	4
5	HLWS6106	WASHER	4
6	HLWS6107	WASHER	4
7	SLA0003-04	FLANGE	1
8	SLA0004-01	SUPPORT	1
9	SLA1000-V101	DRIVE ASSY VERTICAL	1
10	SSCS6061628	SCREW	4
11	W50M312CNQ3Q6	WET END ASSY	1

3/4" CERAMIC FFKM

ITEM NO.	PART NUMBER	BOM Desc	QTY.
1	CUPAAPM-M19-M24-R	COUPLING	1
2	HHBS6071424	BOLT	4
3	HHNS60616	NUT	4
4	HHNS60714	NUT	4
5	HLWS6106	WASHER	4
6	HLWS6107	WASHER	4
7	SLA0003-04	FLANGE	1
8	SLA0004-01	SUPPORT	1
9	SLA1000-V101	DRIVE ASSY VERTICAL	1
10	SSCS6061628	SCREW	4
11	W50M312CNF3F6	WET END ASSY	1

VERTICAL SLA-P WITH NON-ADJUSTABLE 3/4" INJECTION HEAD



PROPRIETARY AND CONFIDENTIAL
 THE INFORMATION CONTAINED HEREIN IS PROPRIETARY TO CHECKPOINT SYSTEMS AND SHALL NOT BE REPRODUCED OR DISCLOSED IN WHOLE OR IN PART OR USED FOR ANY PURPOSE EXCEPT WHEN SUCH USER POSSESSES DIRECT WRITTEN AUTHORIZATION FROM CHECKPOINT SYSTEMS

-- DO NOT SCALE DRAWING --

DOC EFF - 03/03/20			
		DWG. TITLE VERTICAL SLA IEC90 MOTOR 3/4" ASSY	
REV 00	MKT-SLA-TASPV-PL	SIZE B	
DRAWING NUMBER		SHEET 18 OF 33	

3/4" CERAMIC HLC

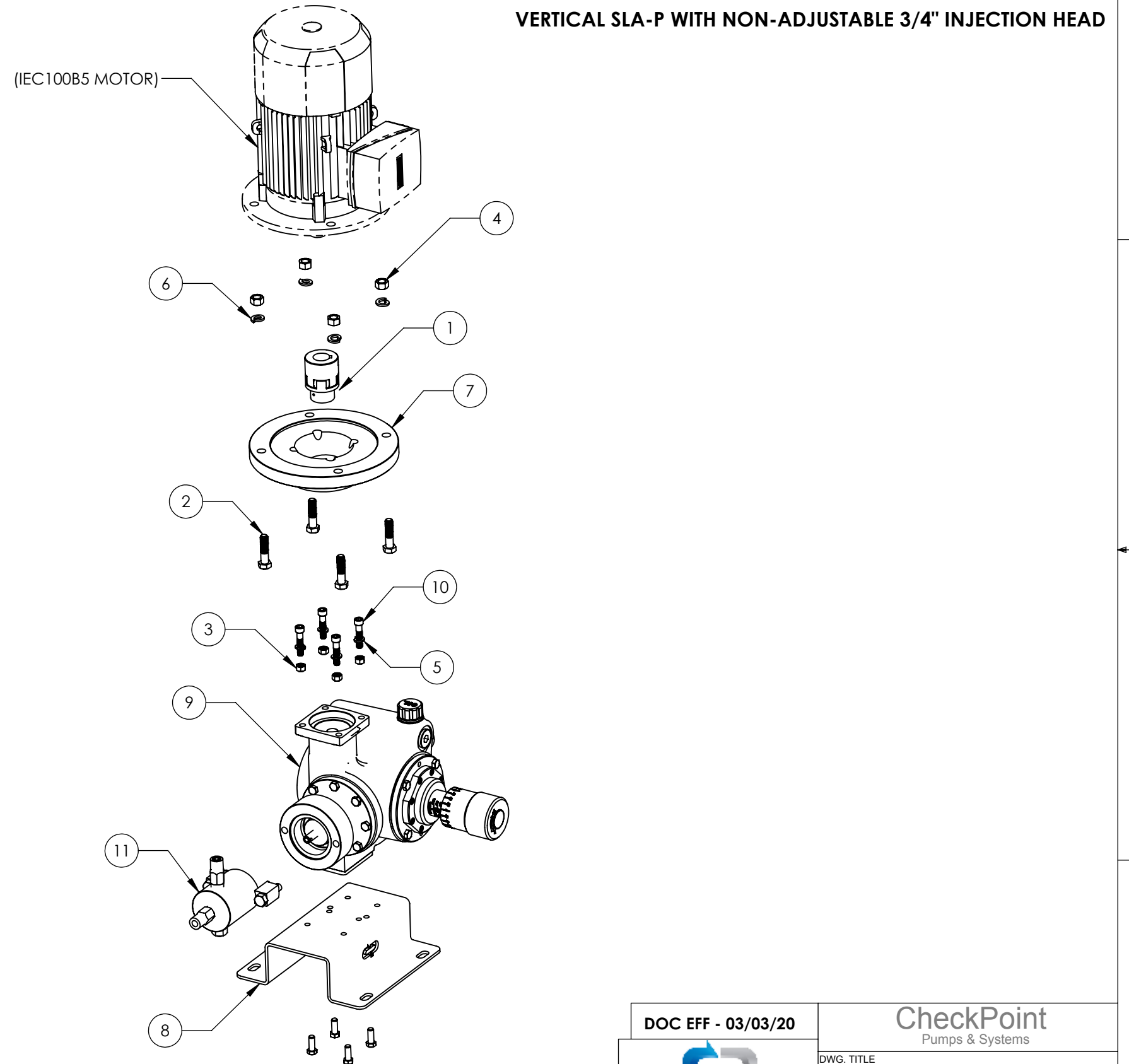
ITEM NO.	PART NUMBER	BOM Desc	QTY.
1	CUPBAPM-M19-M28-R	COUPLING	1
2	HHBS6081332	BOLT	4
3	HHNS60616	NUT	4
4	HHNS60813	NUT	4
5	HLWS6106	WASHER	4
6	HLWS6108	WASHER	4
7	SLA0003-05	FLANGE	1
8	SLA0004-01	SUPPORT	1
9	SLA1000-V101	DRIVE ASSY VERTICAL	1
10	SSCS6061628	SCREW	4
11	W50M312CNH3H6	WET END ASSY	1

3/4" CERAMIC FKM

ITEM NO.	PART NUMBER	BOM Desc	QTY.
1	CUPBAPM-M19-M28-R	COUPLING	1
2	HHBS6081332	BOLT	4
3	HHNS60616	NUT	4
4	HHNS60813	NUT	4
5	HLWS6106	WASHER	4
6	HLWS6108	WASHER	4
7	SLA0003-05	FLANGE	1
8	SLA0004-01	SUPPORT	1
9	SLA1000-V101	DRIVE ASSY VERTICAL	1
10	SSCS6061628	SCREW	4
11	W50M312CNQ3Q6	WET END ASSY	1

3/4" CERAMIC FFKM

ITEM NO.	PART NUMBER	BOM Desc	QTY.
1	CUPBAPM-M19-M28-R	COUPLING	1
2	HHBS6081332	BOLT	4
3	HHNS60616	NUT	4
4	HHNS60813	NUT	4
5	HLWS6106	WASHER	4
6	HLWS6108	WASHER	4
7	SLA0003-05	FLANGE	1
8	SLA0004-01	SUPPORT	1
9	SLA1000-V101	DRIVE ASSY VERTICAL	1
10	SSCS6061628	SCREW	4
11	W50M312CNF3F6	WET END ASSY	1



PROPRIETARY AND CONFIDENTIAL
 THE INFORMATION CONTAINED HEREIN IS PROPRIETARY TO CHECKPOINT SYSTEMS AND SHALL NOT BE REPRODUCED OR DISCLOSED IN WHOLE OR IN PART OR USED FOR ANY PURPOSE EXCEPT WHEN SUCH USER POSSESSES DIRECT WRITTEN AUTHORIZATION FROM CHECKPOINT SYSTEMS

-- DO NOT SCALE DRAWING --

DOC EFF - 03/03/20			
		DWG. TITLE VERTICAL SLA IEC100 MOTOR 3/4" ASSY	
REV 00	MKT-SLA-TASPV-PL	SIZE B	
DRAWING NUMBER		SHEET 19 OF 33	

3/4" CERAMIC HLC

ITEM NO.	PART NUMBER	BOM Desc	QTY.
1	CUPAAPM-E07-M19-R	COUPLING	1
2	HHBS6061616	BOLT	4
3	HHNS60616	NUT	4
4	HLWS6106	WASHER	4
5	SLA0003-01	FLANGE	1
6	SLA0004-01	SUPPORT	1
7	SLA1000-V101	DRIVE ASSY VERTICAL	1
8	SSCS6061628	SCREW	4
9	W50M312CNH3H6	WET END ASSY	1

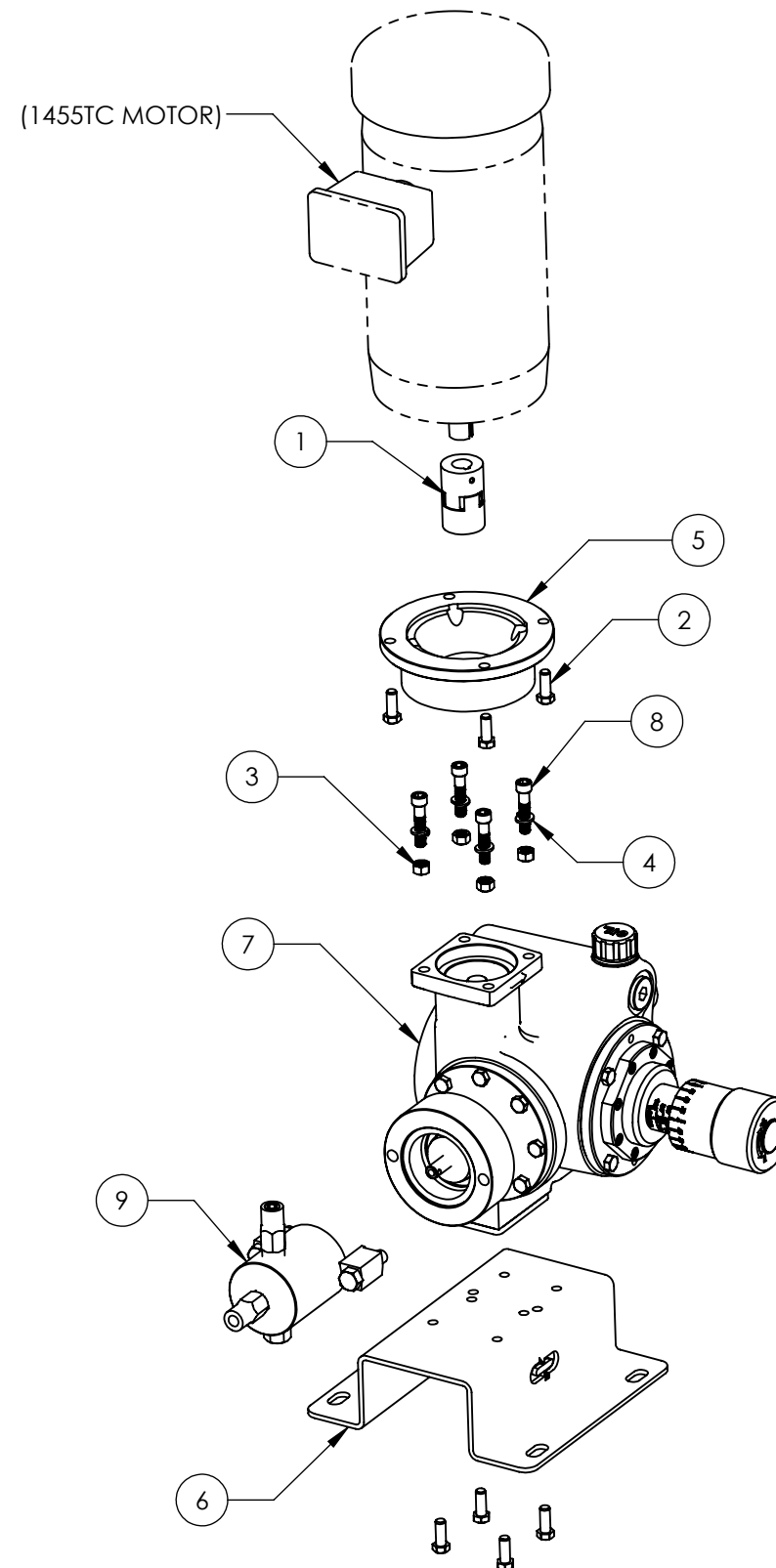
3/4" CERAMIC FKM

ITEM NO.	PART NUMBER	BOM Desc	QTY.
1	CUPAAPM-E07-M19-R	COUPLING	1
2	HHBS6061616	BOLT	4
3	HHNS60616	NUT	4
4	HLWS6106	WASHER	4
5	SLA0003-01	FLANGE	1
6	SLA0004-01	SUPPORT	1
7	SLA1000-V101	DRIVE ASSY VERTICAL	1
8	SSCS6061628	SCREW	4
9	W50M312CNQ3Q6	WET END ASSY	1

3/4" CERAMIC FFKM

ITEM NO.	PART NUMBER	BOM Desc	QTY.
1	CUPAAPM-E07-M19-R	COUPLING	1
2	HHBS6061616	BOLT	4
3	HHNS60616	NUT	4
4	HLWS6106	WASHER	4
5	SLA0003-01	FLANGE	1
6	SLA0004-01	SUPPORT	1
7	SLA1000-V101	DRIVE ASSY VERTICAL	1
8	SSCS6061628	SCREW	4
9	W50M312CNF3F6	WET END ASSY	1

VERTICAL SLA-P WITH NON-ADJUSTABLE 3/4" INJECTION HEAD



PROPRIETARY AND CONFIDENTIAL
 THE INFORMATION CONTAINED HEREIN IS PROPRIETARY TO CHECKPOINT SYSTEMS AND SHALL NOT BE REPRODUCED OR DISCLOSED IN WHOLE OR IN PART OR USED FOR ANY PURPOSE EXCEPT WHEN SUCH USER POSSESSES DIRECT WRITTEN AUTHORIZATION FROM CHECKPOINT SYSTEMS

-- DO NOT SCALE DRAWING --

DOC EFF - 03/03/20			
		DWG. TITLE VERTICAL SLA 143TC MOTOR 3/4" ASSY	
REV 00	MKT-SLA-TASPV-PL	SIZE B	
DRAWING NUMBER		SHEET 20 OF 33	

3/4" CERAMIC HLC

ITEM NO.	PART NUMBER	BOM Desc	QTY.
1	CUPBAPM-E09-M19-R	COUPLING	1
2	HHBS6081320	BOLT	4
3	HHNS60616	NUT	4
4	HLWS6106	WASHER	4
5	SLA0003-02	FLANGE	1
6	SLA0004-01	SUPPORT	1
7	SLA1000-V101	DRIVE ASSY VERTICAL	1
8	SSCS6061628	SCREW	4
9	W50M312CNH3H6	WET END ASSY	1

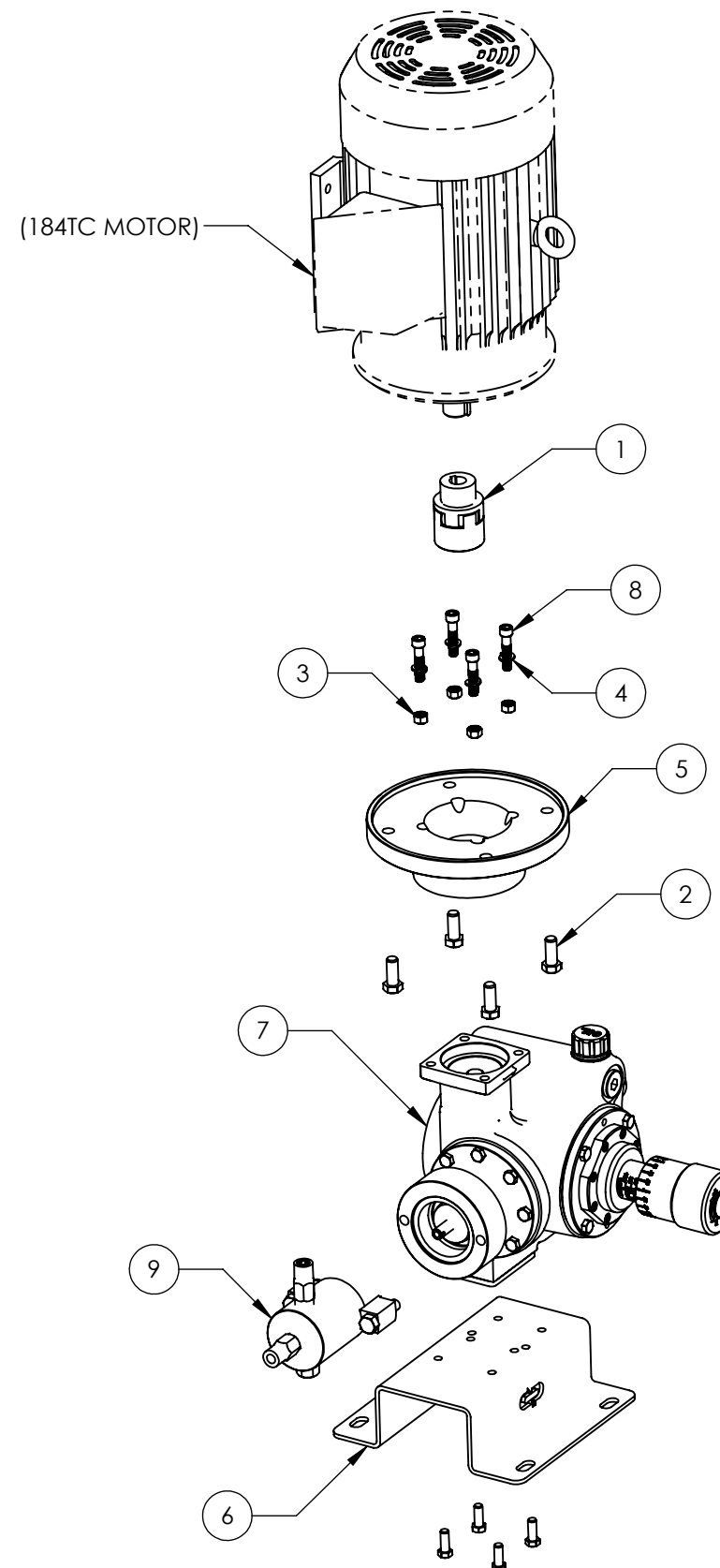
3/4" CERAMIC FKM

ITEM NO.	PART NUMBER	BOM Desc	QTY.
1	CUPBAPM-E09-M19-R	COUPLING	1
2	HHBS6081320	BOLT	4
3	HHNS60616	NUT	4
4	HLWS6106	WASHER	4
5	SLA0003-02	FLANGE	1
6	SLA0004-01	SUPPORT	1
7	SLA1000-V101	DRIVE ASSY VERTICAL	1
8	SSCS6061628	SCREW	4
9	W50M312CNQ3Q6	WET END ASSY	1

3/4" CERAMIC FFKM

ITEM NO.	PART NUMBER	BOM Desc	QTY.
1	CUPBAPM-E09-M19-R	COUPLING	1
2	HHBS6081320	BOLT	4
3	HHNS60616	NUT	4
4	HLWS6106	WASHER	4
5	SLA0003-02	FLANGE	1
6	SLA0004-01	SUPPORT	1
7	SLA1000-V101	DRIVE ASSY VERTICAL	1
8	SSCS6061628	SCREW	4
9	W50M312CNF3F6	WET END ASSY	1

VERTICAL SLA-P WITH NON-ADJUSTABLE 3/4" INJECTION HEAD



PROPRIETARY AND CONFIDENTIAL
 THE INFORMATION CONTAINED HEREIN IS PROPRIETARY TO CHECKPOINT SYSTEMS AND SHALL NOT BE REPRODUCED OR DISCLOSED IN WHOLE OR IN PART OR USED FOR ANY PURPOSE EXCEPT WHEN SUCH USER POSSESSES DIRECT WRITTEN AUTHORIZATION FROM CHECKPOINT SYSTEMS

-- DO NOT SCALE DRAWING --

DOC EFF - 03/03/20			
		DWG. TITLE VERTICAL SLA 184TC MOTOR 3/4" ASSY	
REV	00	MKT-SLA-TASPV-PL	SIZE B
DRAWING NUMBER		SHEET 21 OF 33	

1" CERAMIC HLC

ITEM NO.	PART NUMBER	BOM Desc	QTY.
1	CUPAAPM-E05-M19-R	COUPLING	1
2	HHBS6061616	BOLT	4
3	HHNS60616	NUT	4
4	HLWS6106	WASHER	4
5	SLA0003-01	FLANGE	1
6	SLA0004-01	SUPPORT	1
7	SLA1000-V101	DRIVE ASSY VERTICAL	1
8	SSCS6061628	SCREW	4
9	W50M316CNH3H6	WET END ASSY	1

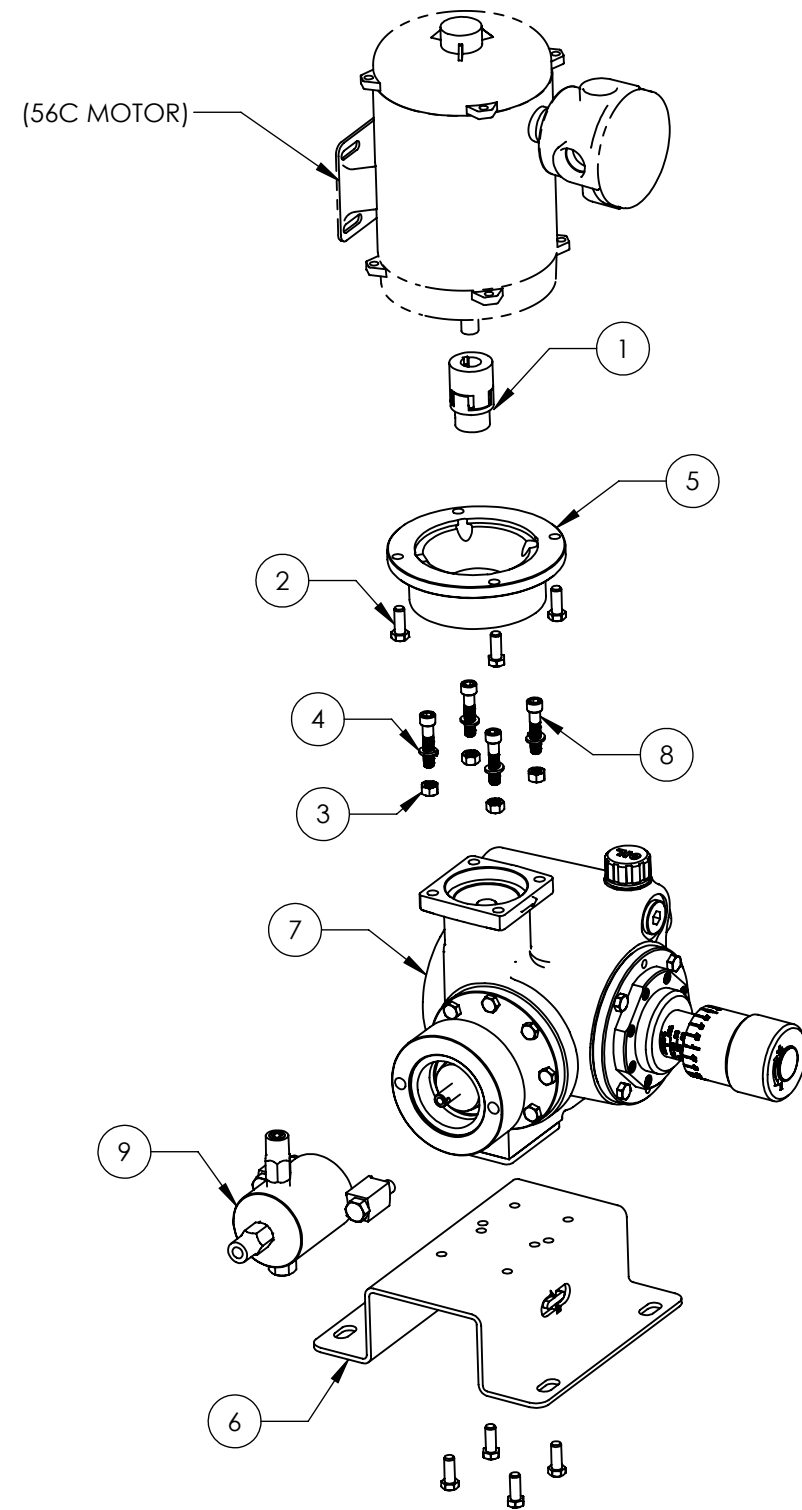
1" CERAMIC FKM

ITEM NO.	PART NUMBER	BOM Desc	QTY.
1	CUPAAPM-E05-M19-R	COUPLING	1
2	HHBS6061616	BOLT	4
3	HHNS60616	NUT	4
4	HLWS6106	WASHER	4
5	SLA0003-01	FLANGE	1
6	SLA0004-01	SUPPORT	1
7	SLA1000-V101	DRIVE ASSY VERTICAL	1
8	SSCS6061628	SCREW	4
9	W50M316CNQ3Q6	WET END ASSY	1

1" CERAMIC FFKM

ITEM NO.	PART NUMBER	BOM Desc	QTY.
1	CUPAAPM-E05-M19-R	COUPLING	1
2	HHBS6061616	BOLT	4
3	HHNS60616	NUT	4
4	HLWS6106	WASHER	4
5	SLA0003-01	FLANGE	1
6	SLA0004-01	SUPPORT	1
7	SLA1000-V101	DRIVE ASSY VERTICAL	1
8	SSCS6061628	SCREW	4
9	W50M316CNF3F6	WET END ASSY	1

VERTICAL SLA-P WITH NON-ADJUSTABLE 1" INJECTION HEAD



PROPRIETARY AND CONFIDENTIAL
 THE INFORMATION CONTAINED HEREIN IS PROPRIETARY TO CHECKPOINT SYSTEMS AND SHALL NOT BE REPRODUCED OR DISCLOSED IN WHOLE OR IN PART OR USED FOR ANY PURPOSE EXCEPT WHEN SUCH USER POSSESSES DIRECT WRITTEN AUTHORIZATION FROM CHECKPOINT SYSTEMS

-- DO NOT SCALE DRAWING --

DOC EFF - 03/03/20			
		DWG. TITLE VERTICAL SLA 56C MOTOR 1" ASSY	
REV 00	MKT-SLA-TASPV-PL	SIZE B	
DRAWING NUMBER		SHEET 22 OF 33	

1" CERAMIC HLC

ITEM NO.	PART NUMBER	BOM Desc	QTY.
1	CUPAAPM-M19-M19-R	COUPLING	1
2	HHBS6071424	BOLT	4
3	HHNS60616	NUT	4
4	HHNS60714	NUT	4
5	HLWS6106	WASHER	4
6	HLWS6107	WASHER	4
7	SLA0003-03	FLANGE	1
8	SLA0004-01	SUPPORT	1
9	SLA1000-V101	DRIVE ASSY VERTICAL	1
10	SSCS6061628	SCREW	4
11	W50M316CNH3H6	WET END ASSY	1

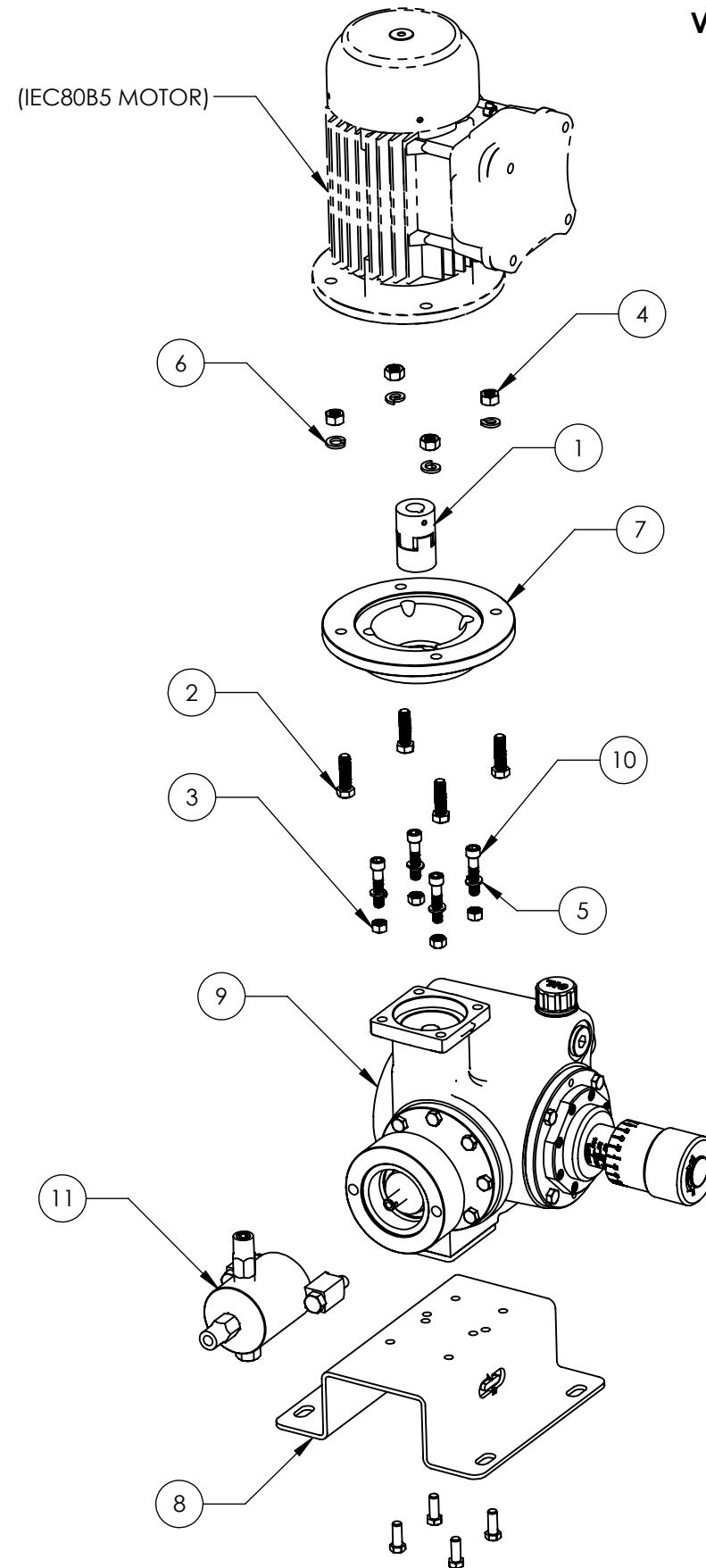
1" CERAMIC FKM

ITEM NO.	PART NUMBER	BOM Desc	QTY.
1	CUPAAPM-M19-M19-R	COUPLING	1
2	HHBS6071424	BOLT	4
3	HHNS60616	NUT	4
4	HHNS60714	NUT	4
5	HLWS6106	WASHER	4
6	HLWS6107	WASHER	4
7	SLA0003-03	FLANGE	1
8	SLA0004-01	SUPPORT	1
9	SLA1000-V101	DRIVE ASSY VERTICAL	1
10	SSCS6061628	SCREW	4
11	W50M316CNQ3Q6	WET END ASSY	1

1" CERAMIC FFKM

ITEM NO.	PART NUMBER	BOM Desc	QTY.
1	CUPAAPM-M19-M19-R	COUPLING	1
2	HHBS6071424	BOLT	4
3	HHNS60616	NUT	4
4	HHNS60714	NUT	4
5	HLWS6106	WASHER	4
6	HLWS6107	WASHER	4
7	SLA0003-03	FLANGE	1
8	SLA0004-01	SUPPORT	1
9	SLA1000-V101	DRIVE ASSY VERTICAL	1
10	SSCS6061628	SCREW	4
11	W50M316CNF3F6	WET END ASSY	1

VERTICAL SLA-P WITH NON-ADJUSTABLE 1" INJECTION HEAD



PROPRIETARY AND CONFIDENTIAL
 THE INFORMATION CONTAINED HEREIN IS PROPRIETARY TO CHECKPOINT SYSTEMS AND SHALL NOT BE REPRODUCED OR DISCLOSED IN WHOLE OR IN PART OR USED FOR ANY PURPOSE EXCEPT WHEN SUCH USER POSSESSES DIRECT WRITTEN AUTHORIZATION FROM CHECKPOINT SYSTEMS

-- DO NOT SCALE DRAWING --

DOC EFF - 03/03/20			
		DWG. TITLE VERTICAL SLA IEC80 MOTOR 1" ASSY	
REV	00	MKT-SLA-TASPV-PL	SIZE B
DRAWING NUMBER		SHEET 23 OF 33	

1" CERAMIC HLC

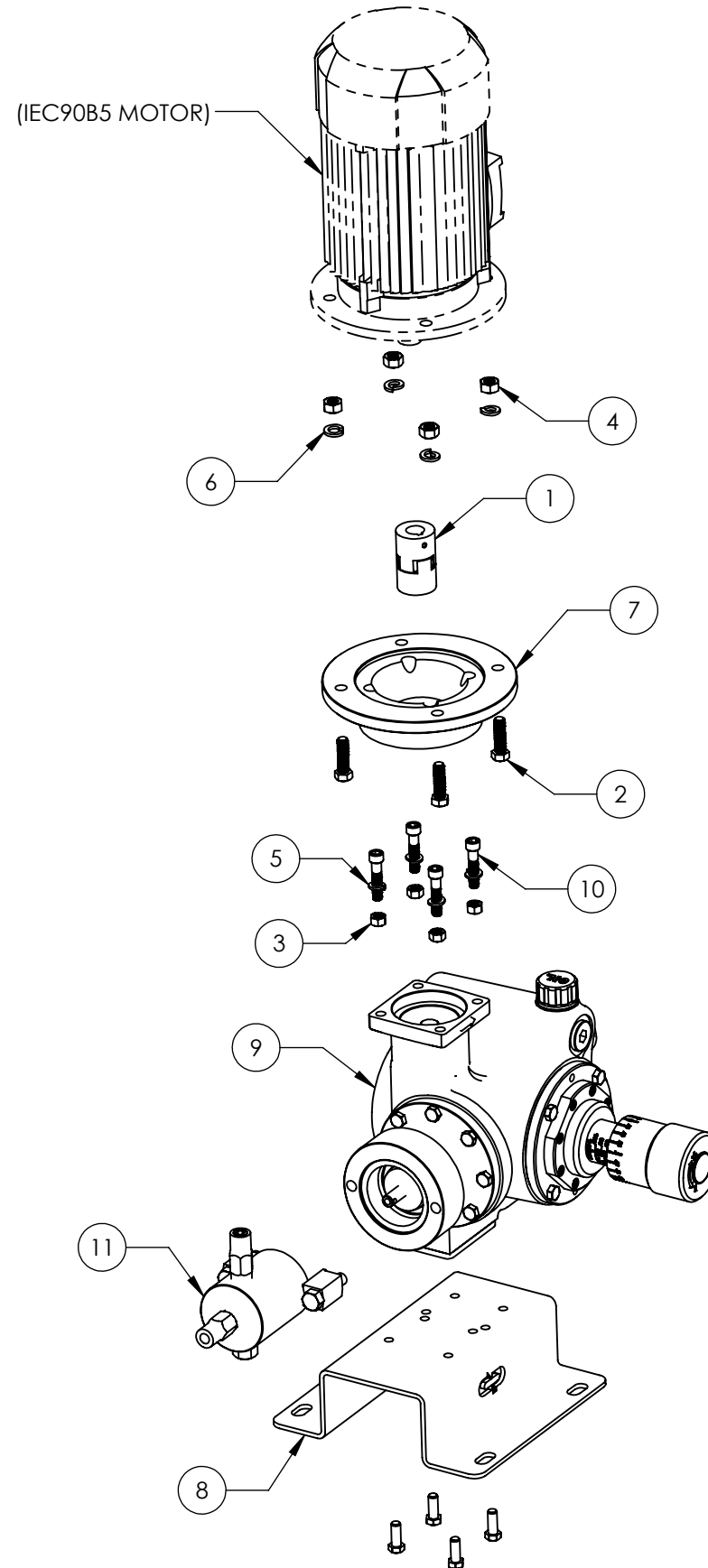
ITEM NO.	PART NUMBER	BOM Desc	QTY.
1	CUPAAPM-M19-M24-R	COUPLING	1
2	HHBS6071424	BOLT	4
3	HHNS60616	NUT	4
4	HHNS60714	NUT	4
5	HLWS6106	WASHER	4
6	HLWS6107	WASHER	4
7	SLA0003-04	FLANGE	1
8	SLA0004-01	SUPPORT	1
9	SLA1000-V101	DRIVE ASSY VERTICAL	1
10	SSCS6061628	SCREW	4
11	W50M316CNH3H6	WET END ASSY	1

1" CERAMIC FKM

ITEM NO.	PART NUMBER	BOM Desc	QTY.
1	CUPAAPM-M19-M24-R	COUPLING	1
2	HHBS6071424	BOLT	4
3	HHNS60616	NUT	4
4	HHNS60714	NUT	4
5	HLWS6106	WASHER	4
6	HLWS6107	WASHER	4
7	SLA0003-04	FLANGE	1
8	SLA0004-01	SUPPORT	1
9	SLA1000-V101	DRIVE ASSY VERTICAL	1
10	SSCS6061628	SCREW	4
11	W50M316CNQ3Q6	WET END ASSY	1

1" CERAMIC FFKM

ITEM NO.	PART NUMBER	BOM Desc	QTY.
1	CUPAAPM-M19-M24-R	COUPLING	1
2	HHBS6071424	BOLT	4
3	HHNS60616	NUT	4
4	HHNS60714	NUT	4
5	HLWS6106	WASHER	4
6	HLWS6107	WASHER	4
7	SLA0003-04	FLANGE	1
8	SLA0004-01	SUPPORT	1
9	SLA1000-V101	DRIVE ASSY VERTICAL	1
10	SSCS6061628	SCREW	4
11	W50M316CNF3F6	WET END ASSY	1



VERTICAL SLA-P WITH NON-ADJUSTABLE 1" INJECTION HEAD

PROPRIETARY AND CONFIDENTIAL
 THE INFORMATION CONTAINED HEREIN IS PROPRIETARY TO CHECKPOINT SYSTEMS AND SHALL NOT BE REPRODUCED OR DISCLOSED IN WHOLE OR IN PART OR USED FOR ANY PURPOSE EXCEPT WHEN SUCH USER POSSESSES DIRECT WRITTEN AUTHORIZATION FROM CHECKPOINT SYSTEMS

-- DO NOT SCALE DRAWING --

DOC EFF - 03/03/20			
		DWG. TITLE VERTICAL SLA IEC90 MOTOR 1" ASSY	
REV 00	MKT-SLA-TASPV-PL	SIZE B	
DRAWING NUMBER		SHEET 24 OF 33	

1" CERAMIC HLC

ITEM NO.	PART NUMBER	BOM Desc	QTY.
1	CUPBAPM-M19-M28-R	COUPLING	1
2	HHBS6081332	BOLT	4
3	HHNS60616	NUT	4
4	HHNS60813	NUT	4
5	HLWS6106	WASHER	4
6	HLWS6108	WASHER	4
7	SLA0003-05	FLANGE	1
8	SLA0004-01	SUPPORT	1
9	SLA1000-V101	DRIVE ASSY VERTICAL	1
10	SSCS6061628	SCREW	4
11	W50M316CNH3H6	WET END ASSY	1

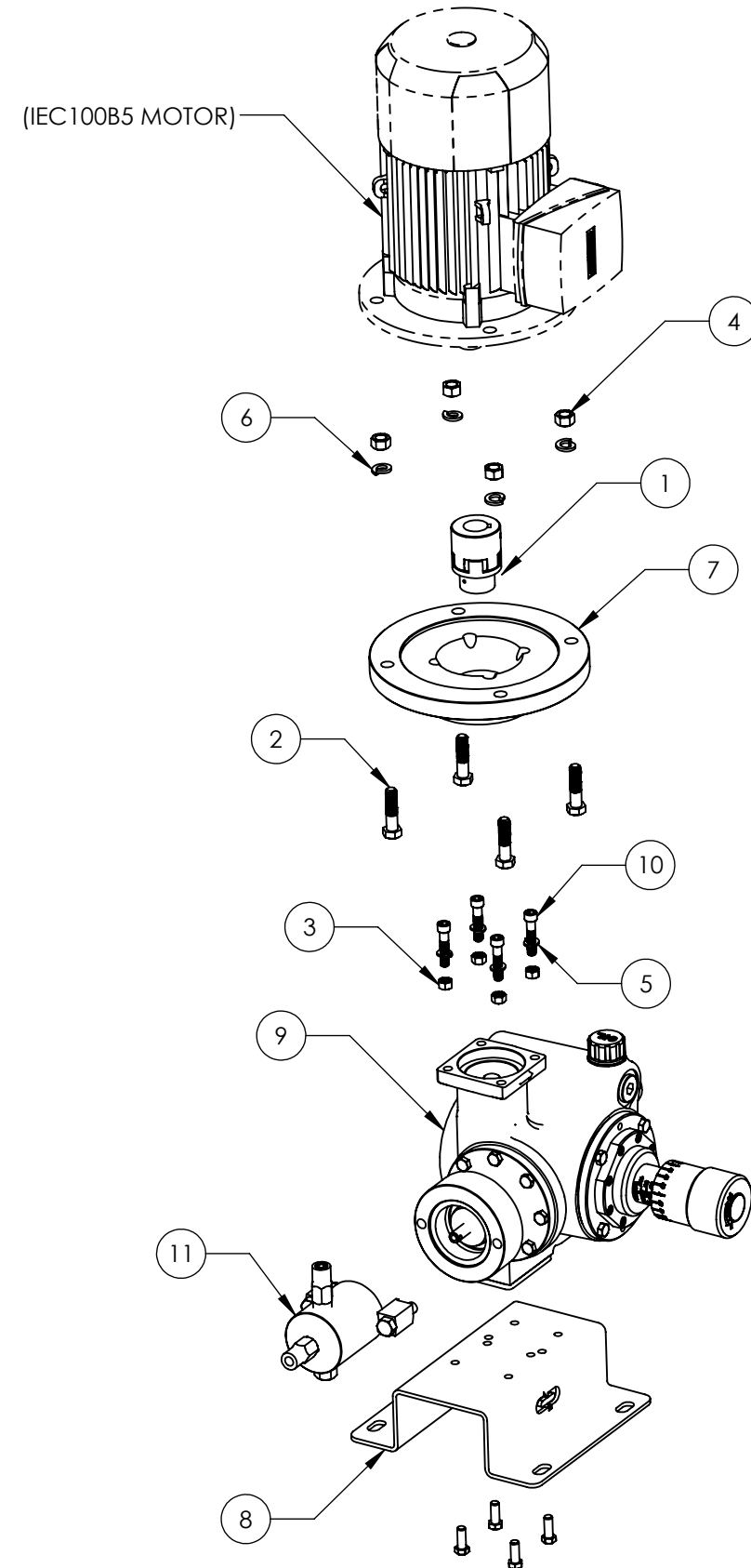
1" CERAMIC FKM

ITEM NO.	PART NUMBER	BOM Desc	QTY.
1	CUPBAPM-M19-M28-R	COUPLING	1
2	HHBS6081332	BOLT	4
3	HHNS60616	NUT	4
4	HHNS60813	NUT	4
5	HLWS6106	WASHER	4
6	HLWS6108	WASHER	4
7	SLA0003-05	FLANGE	1
8	SLA0004-01	SUPPORT	1
9	SLA1000-V101	DRIVE ASSY VERTICAL	1
10	SSCS6061628	SCREW	4
11	W50M316CNQ3Q6	WET END ASSY	1

1" CERAMIC FFKM

ITEM NO.	PART NUMBER	BOM Desc	QTY.
1	CUPBAPM-M19-M28-R	COUPLING	1
2	HHBS6081332	BOLT	4
3	HHNS60616	NUT	4
4	HHNS60813	NUT	4
5	HLWS6106	WASHER	4
6	HLWS6108	WASHER	4
7	SLA0003-05	FLANGE	1
8	SLA0004-01	SUPPORT	1
9	SLA1000-V101	DRIVE ASSY VERTICAL	1
10	SSCS6061628	SCREW	4
11	W50M316CNF3F6	WET END ASSY	1

VERTICAL SLA-P WITH NON-ADJUSTABLE 1" INJECTION HEAD



PROPRIETARY AND CONFIDENTIAL
 THE INFORMATION CONTAINED HEREIN IS PROPRIETARY TO CHECKPOINT SYSTEMS AND SHALL NOT BE REPRODUCED OR DISCLOSED IN WHOLE OR IN PART OR USED FOR ANY PURPOSE EXCEPT WHEN SUCH USER POSSESSES DIRECT WRITTEN AUTHORIZATION FROM CHECKPOINT SYSTEMS

-- DO NOT SCALE DRAWING --

DOC EFF - 03/03/20			
		DWG. TITLE VERTICAL SLA IEC100 MOTOR 1" ASSY	
REV 00	MKT-SLA-TASPV-PL	SIZE B	
DRAWING NUMBER		SHEET 25 OF 33	

1" CERAMIC HLC

ITEM NO.	PART NUMBER	BOM Desc	QTY.
1	CUPAAPM-E07-M19-R	COUPLING	1
2	HHBS6061616	BOLT	4
3	HHNS60616	NUT	4
4	HLWS6106	WASHER	4
5	SLA0003-01	FLANGE	1
6	SLA0004-01	SUPPORT	1
7	SLA1000-V101	DRIVE ASSY VERTICAL	1
8	SSCS6061628	SCREW	4
9	W50M316CNH3H6	WET END ASSY	1

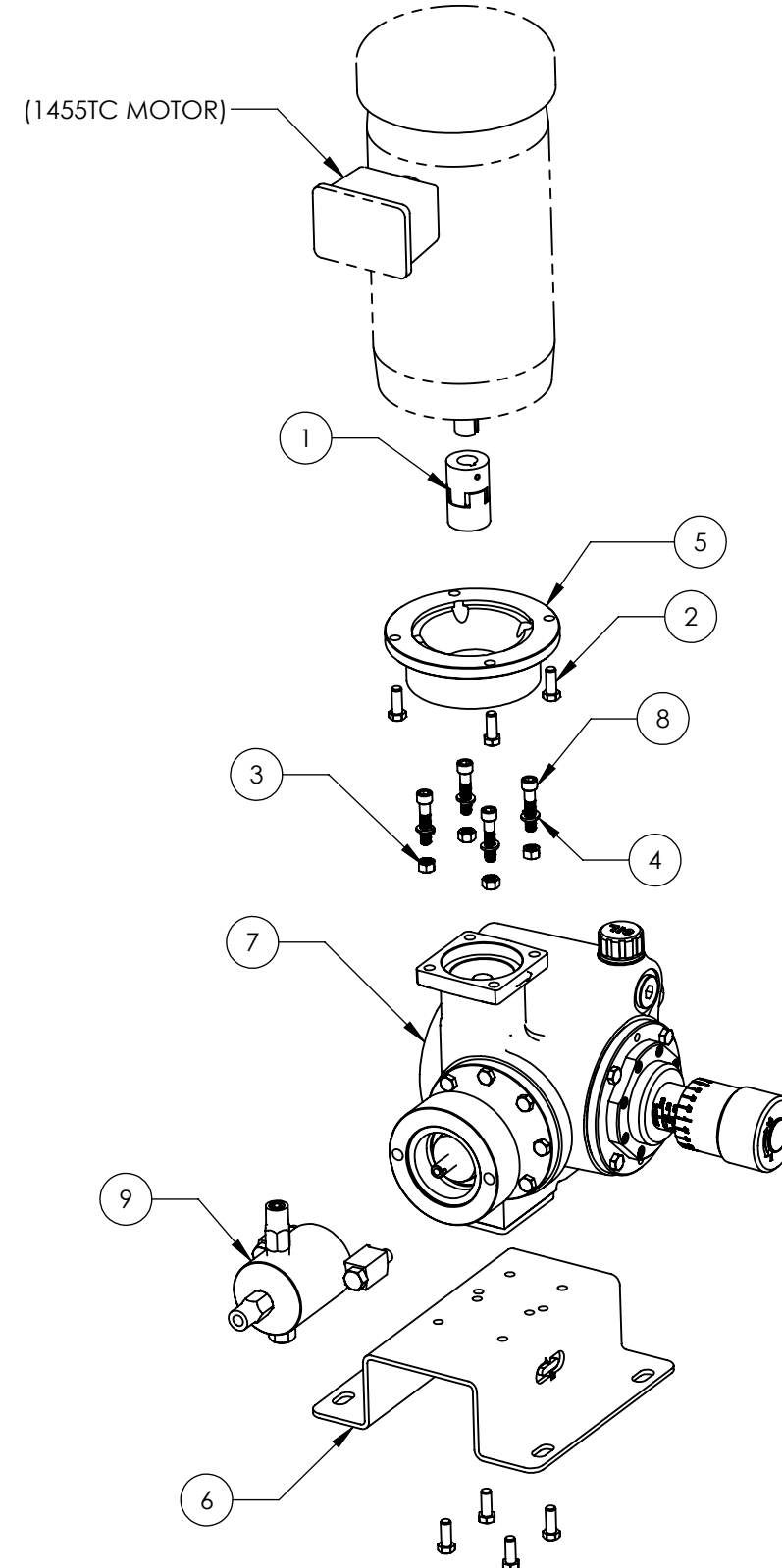
1" CERAMIC FKM

ITEM NO.	PART NUMBER	BOM Desc	QTY.
1	CUPAAPM-E07-M19-R	COUPLING	1
2	HHBS6061616	BOLT	4
3	HHNS60616	NUT	4
4	HLWS6106	WASHER	4
5	SLA0003-01	FLANGE	1
6	SLA0004-01	SUPPORT	1
7	SLA1000-V101	DRIVE ASSY VERTICAL	1
8	SSCS6061628	SCREW	4
9	W50M316CNQ3Q6	WET END ASSY	1

1" CERAMIC FFKM

ITEM NO.	PART NUMBER	BOM Desc	QTY.
1	CUPAAPM-E07-M19-R	COUPLING	1
2	HHBS6061616	BOLT	4
3	HHNS60616	NUT	4
4	HLWS6106	WASHER	4
5	SLA0003-01	FLANGE	1
6	SLA0004-01	SUPPORT	1
7	SLA1000-V101	DRIVE ASSY VERTICAL	1
8	SSCS6061628	SCREW	4
9	W50M316CNF3F6	WET END ASSY	1

VERTICAL SLA-P WITH NON-ADJUSTABLE 1" INJECTION HEAD



PROPRIETARY AND CONFIDENTIAL
 THE INFORMATION CONTAINED HEREIN IS PROPRIETARY TO CHECKPOINT SYSTEMS AND SHALL NOT BE REPRODUCED OR DISCLOSED IN WHOLE OR IN PART OR USED FOR ANY PURPOSE EXCEPT WHEN SUCH USER POSSESSES DIRECT WRITTEN AUTHORIZATION FROM CHECKPOINT SYSTEMS

-- DO NOT SCALE DRAWING --

DOC EFF - 03/03/20			
		DWG. TITLE VERTICAL SLA 143TC MOTOR 1" ASSY	
REV 00	MKT-SLA-TASPV-PL	SIZE B	
DRAWING NUMBER		SHEET 26 OF 33	

1" CERAMIC HLC

ITEM NO.	PART NUMBER	BOM Desc	QTY.
1	CUPBAPM-E09-M19-R	COUPLING	1
2	HHBS6081320	BOLT	4
3	HHNS60616	NUT	4
4	HLWS6106	WASHER	4
5	SLA0003-02	FLANGE	1
6	SLA0004-01	SUPPORT	1
7	SLA1000-V101	DRIVE ASSY VERTICAL	1
8	SSCS6061628	SCREW	4
9	W50M316CNH3H6	WET END ASSY	1

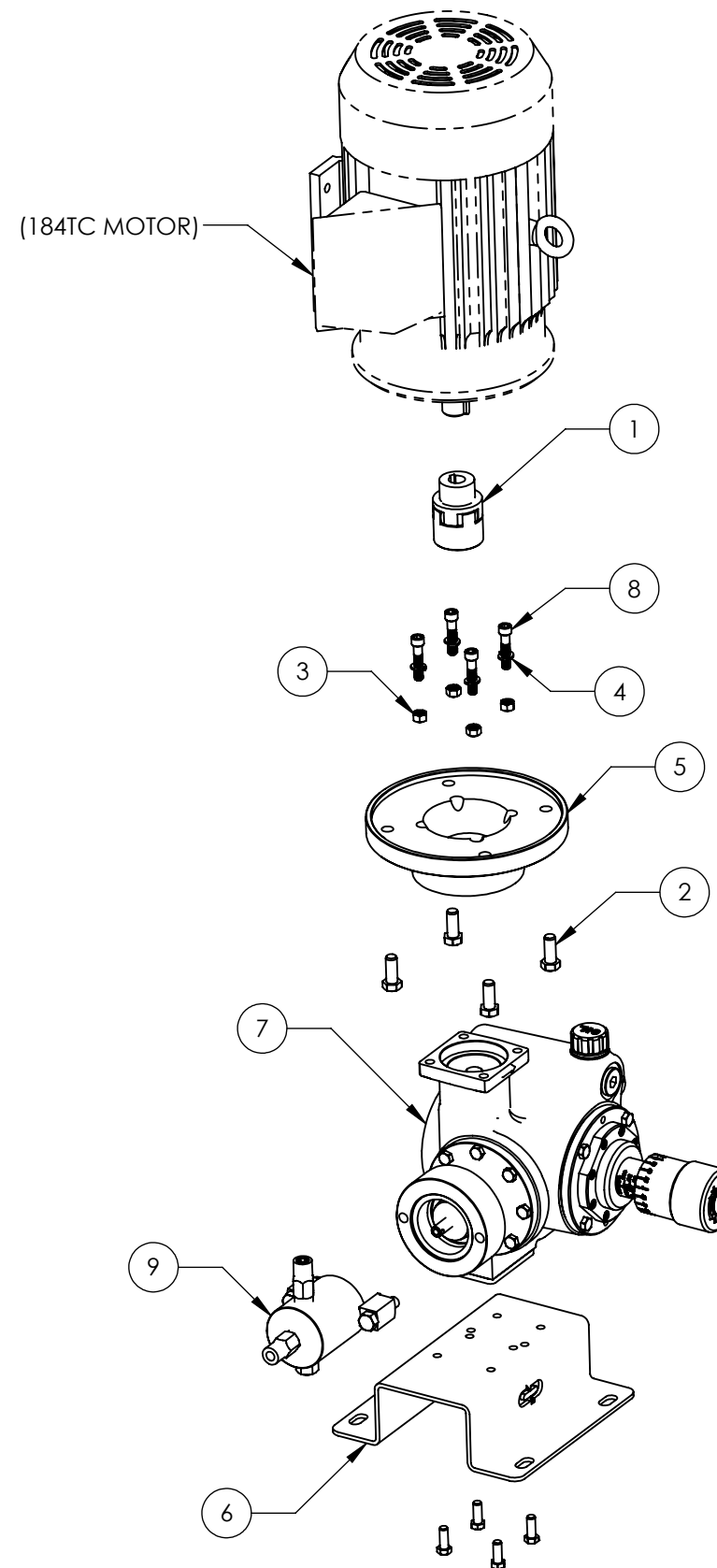
1" CERAMIC FKM

ITEM NO.	PART NUMBER	BOM Desc	QTY.
1	CUPBAPM-E09-M19-R	COUPLING	1
2	HHBS6081320	BOLT	4
3	HHNS60616	NUT	4
4	HLWS6106	WASHER	4
5	SLA0003-02	FLANGE	1
6	SLA0004-01	SUPPORT	1
7	SLA1000-V101	DRIVE ASSY VERTICAL	1
8	SSCS6061628	SCREW	4
9	W50M312CNH3H6	WET END ASSY	1

1" CERAMIC FFKM

ITEM NO.	PART NUMBER	BOM Desc	QTY.
1	CUPBAPM-E09-M19-R	COUPLING	1
2	HHBS6081320	BOLT	4
3	HHNS60616	NUT	4
4	HLWS6106	WASHER	4
5	SLA0003-02	FLANGE	1
6	SLA0004-01	SUPPORT	1
7	SLA1000-V101	DRIVE ASSY VERTICAL	1
8	SSCS6061628	SCREW	4
9	W50M316CNQ3Q6	WET END ASSY	1

VERTICAL SLA-P WITH NON-ADJUSTABLE 1" INJECTION HEAD

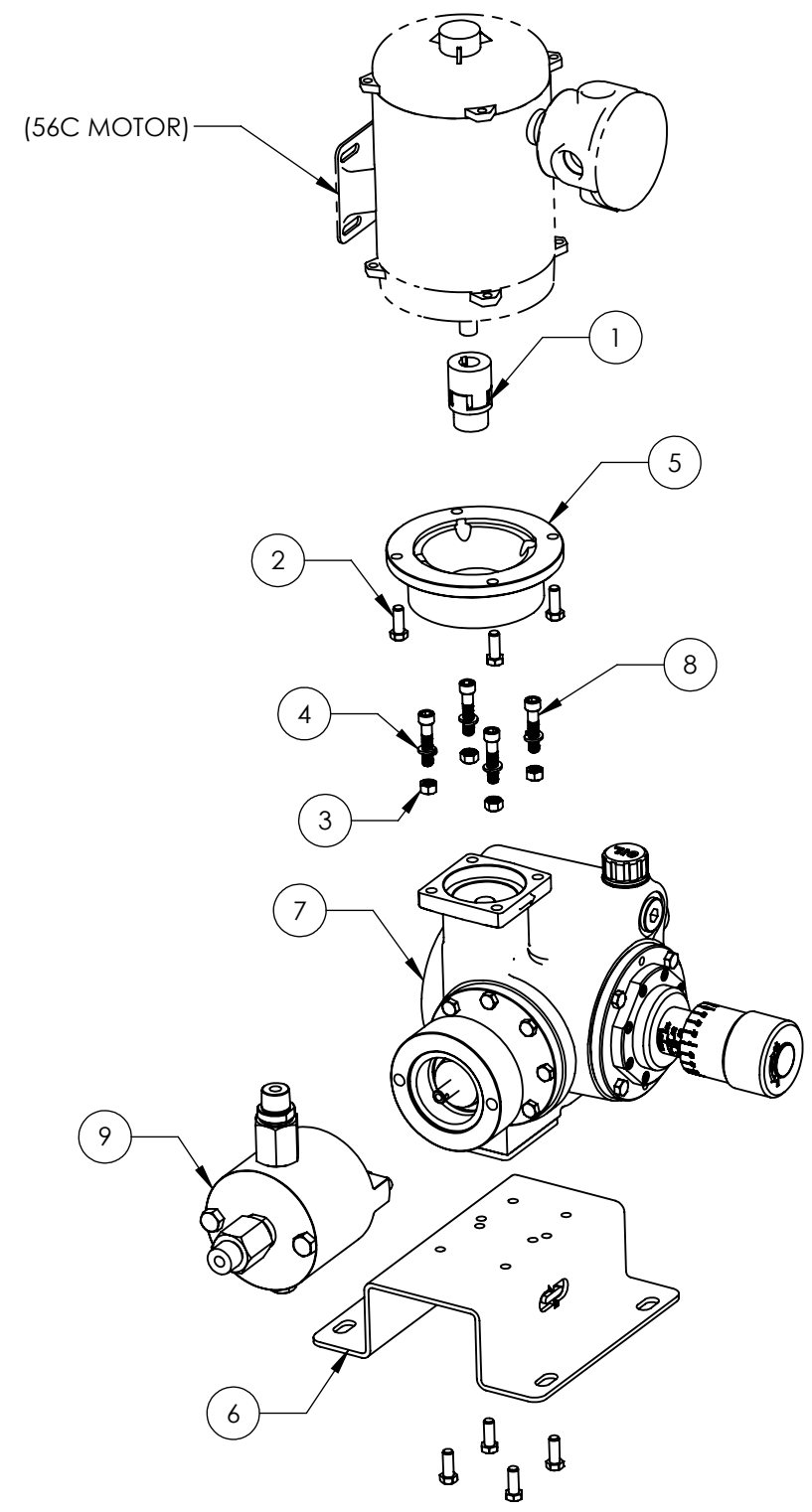


PROPRIETARY AND CONFIDENTIAL
 THE INFORMATION CONTAINED HEREIN IS PROPRIETARY TO CHECKPOINT SYSTEMS AND SHALL NOT BE REPRODUCED OR DISCLOSED IN WHOLE OR IN PART OR USED FOR ANY PURPOSE EXCEPT WHEN SUCH USER POSSESSES DIRECT WRITTEN AUTHORIZATION FROM CHECKPOINT SYSTEMS

-- DO NOT SCALE DRAWING --

DOC EFF - 03/03/20			
		DWG. TITLE VERTICAL SLA 184TC MOTOR 1" ASSY	
REV	00	MKT-SLA-TASPV-PL	SIZE B
DRAWING NUMBER		SHEET 27 OF 33	

VERTICAL SLA-P WITH NON-ADJUSTABLE 1.5" INJECTION HEAD



1.5" CERAMIC FKM

ITEM NO.	PART NUMBER	BOM Desc	QTY.
1	CUPAAPM-E05-M19-R	COUPLING	1
2	HHBS6061616	BOLT	4
3	HHNS60616	NUT	4
4	HLWS6106	WASHER	4
5	SLA0003-01	FLANGE	1
6	SLA0004-01	SUPPORT	1
7	SLA1000-V101	DRIVE ASSY VERTICAL	1
8	SSCS6061628	SCREW	4
9	W50D324CNQ3Q6	WET END ASSY	1

1.5" CERAMIC FFKM

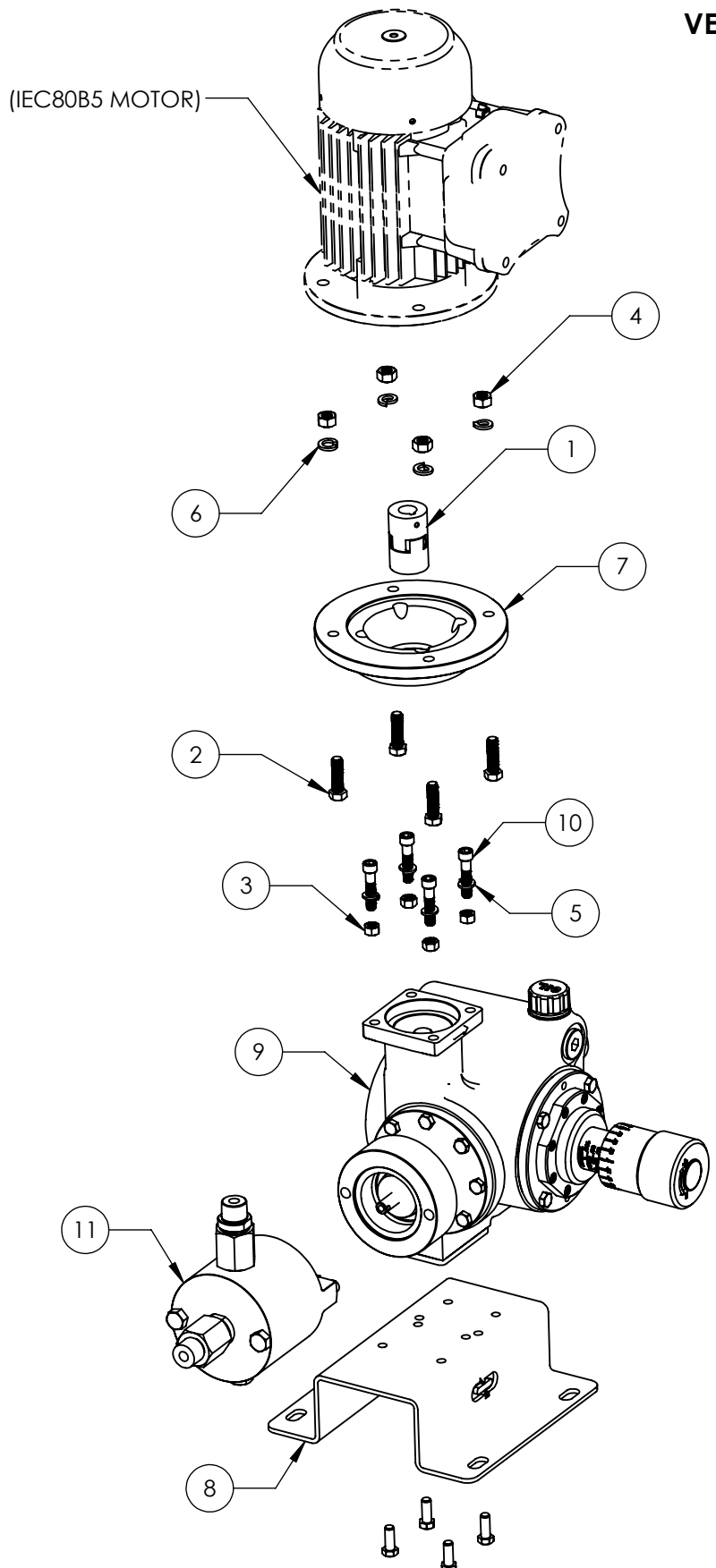
ITEM NO.	PART NUMBER	BOM Desc	QTY.
1	CUPAAPM-E05-M19-R	COUPLING	1
2	HHBS6061616	BOLT	4
3	HHNS60616	NUT	4
4	HLWS6106	WASHER	4
5	SLA0003-01	FLANGE	1
6	SLA0004-01	SUPPORT	1
7	SLA1000-V101	DRIVE ASSY VERTICAL	1
8	SSCS6061628	SCREW	4
9	W50D324CNF3F6	WET END ASSY	1

PROPRIETARY AND CONFIDENTIAL
 THE INFORMATION CONTAINED HEREIN IS PROPRIETARY TO CHECKPOINT SYSTEMS AND SHALL NOT BE REPRODUCED OR DISCLOSED IN WHOLE OR IN PART OR USED FOR ANY PURPOSE EXCEPT WHEN SUCH USER POSSESSES DIRECT WRITTEN AUTHORIZATION FROM CHECKPOINT SYSTEMS

-- DO NOT SCALE DRAWING --

DOC EFF - 03/03/20			
		DWG. TITLE VERTICAL SLA 56C MOTOR 1.5" ASSY	
REV	00	MKT-SLA-TASPV-PL	SIZE B
DRAWING NUMBER		SHEET 28 OF 34	

VERTICAL SLA-P WITH NON-ADJUSTABLE 1.5" INJECTION HEAD



1.5" CERAMIC FKM

ITEM NO.	PART NUMBER	BOM Desc	QTY.
1	CUPAAPM-M19-M19-R	COUPLING	1
2	HHBS6071424	BOLT	4
3	HHNS60616	NUT	4
4	HHNS60714	NUT	4
5	HLWS6106	WASHER	4
6	HLWS6107	WASHER	4
7	SLA0003-03	FLANGE	1
8	SLA0004-01	SUPPORT	1
9	SLA1000-V101	DRIVE ASSY VERTICAL	1
10	SSCS6061628	SCREW	4
11	W50D324CNQ3Q6	WET END ASSY	1

1.5" CERAMIC FFKM

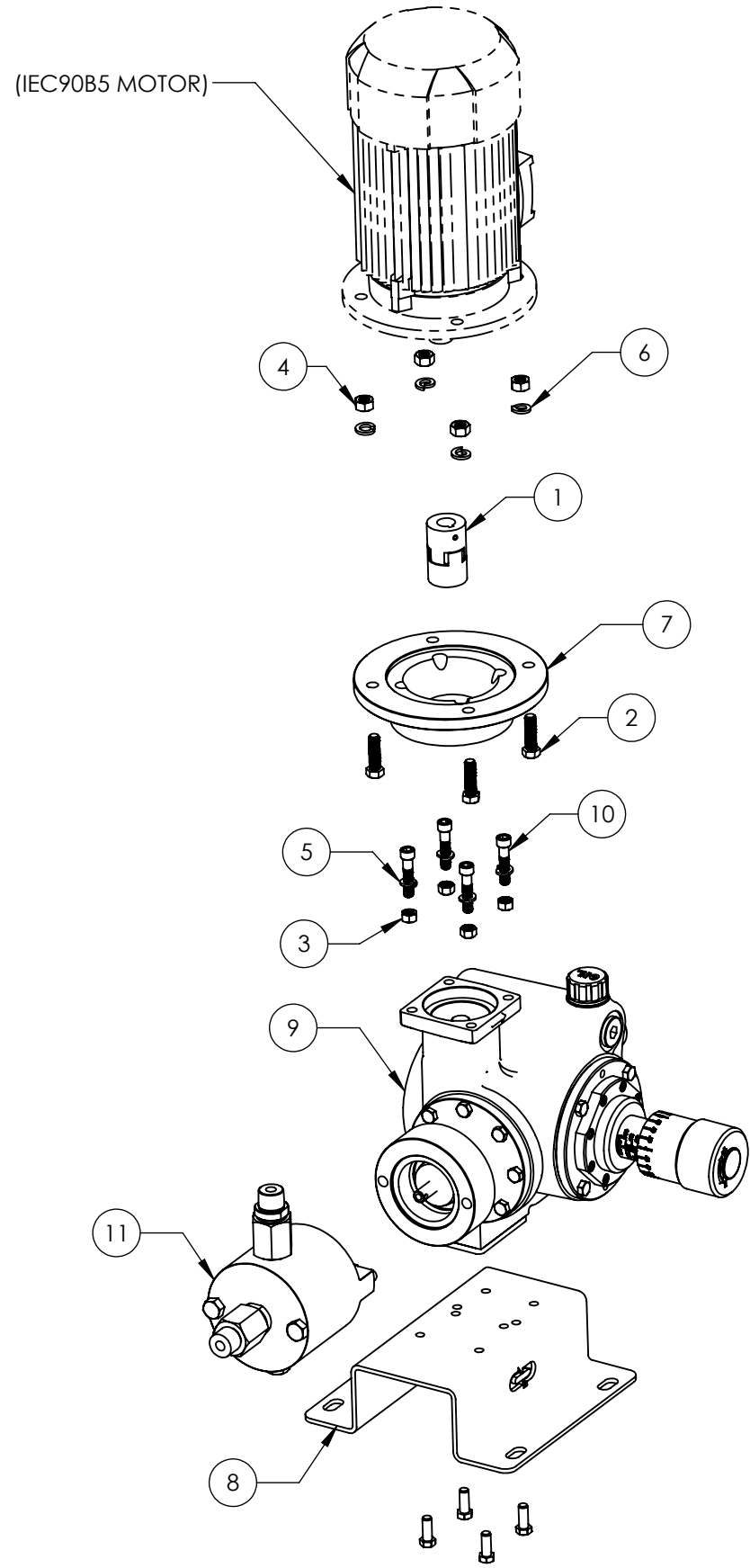
ITEM NO.	PART NUMBER	BOM Desc	QTY.
1	CUPAAPM-M19-M19-R	COUPLING	1
2	HHBS6071424	BOLT	4
3	HHNS60616	NUT	4
4	HHNS60714	NUT	4
5	HLWS6106	WASHER	4
6	HLWS6107	WASHER	4
7	SLA0003-03	FLANGE	1
8	SLA0004-01	SUPPORT	1
9	SLA1000-V101	DRIVE ASSY VERTICAL	1
10	SSCS6061628	SCREW	4
11	W50D324CNF3F6	WET END ASSY	1

PROPRIETARY AND CONFIDENTIAL
 THE INFORMATION CONTAINED HEREIN IS PROPRIETARY TO CHECKPOINT SYSTEMS AND SHALL NOT BE REPRODUCED OR DISCLOSED IN WHOLE OR IN PART OR USED FOR ANY PURPOSE EXCEPT WHEN SUCH USER POSSESSES DIRECT WRITTEN AUTHORIZATION FROM CHECKPOINT SYSTEMS

-- DO NOT SCALE DRAWING --

DOC EFF - 03/03/20			
		DWG. TITLE VERTICAL SLA IEC80 MOTOR 1.5" ASSY	
REV 00	MKT-SLA-TASPV-PL	SIZE B	
DRAWING NUMBER		SHEET 29 OF 33	

VERTICAL SLA-P WITH NON-ADJUSTABLE 1.5" INJECTION HEAD



1.5" CERAMIC FKM

ITEM NO.	PART NUMBER	BOM Desc	QTY.
1	CUPAAPM-M19-M24-R	COUPLING	1
2	HHBS6071424	BOLT	4
3	HHNS60616	NUT	4
4	HHNS60714	NUT	4
5	HLWS6106	WASHER	4
6	HLWS6107	WASHER	4
7	SLA0003-04	FLANGE	1
8	SLA0004-01	SUPPORT	1
9	SLA1000-V101	DRIVE ASSY VERTICAL	1
10	SSCS6061628	SCREW	4
11	W50D324CNQ3Q6	WET END ASSY	1

1.5" CERAMIC FFKM

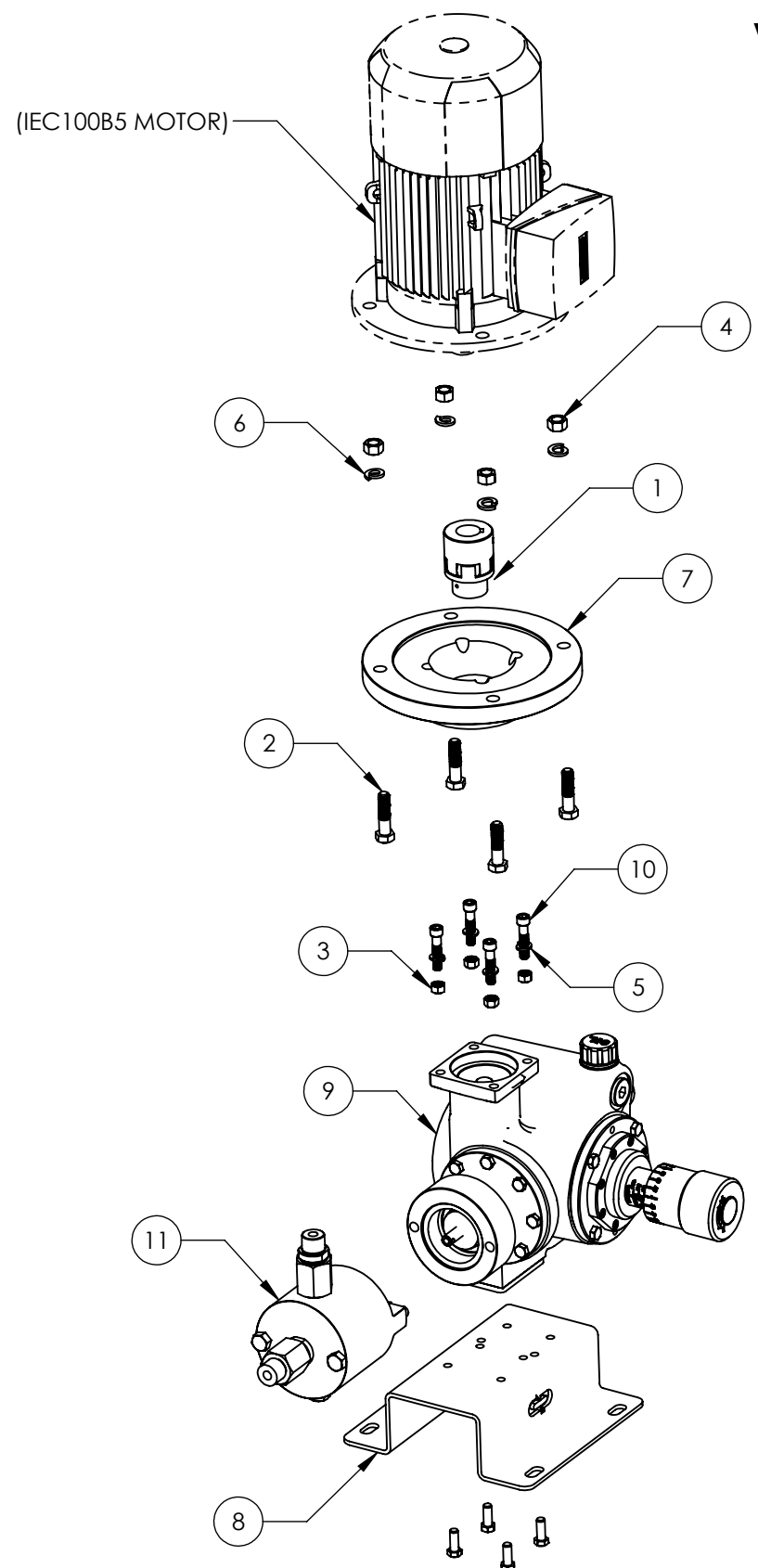
ITEM NO.	PART NUMBER	BOM Desc	QTY.
1	CUPAAPM-M19-M24-R	COUPLING	1
2	HHBS6071424	BOLT	4
3	HHNS60616	NUT	4
4	HHNS60714	NUT	4
5	HLWS6106	WASHER	4
6	HLWS6107	WASHER	4
7	SLA0003-04	FLANGE	1
8	SLA0004-01	SUPPORT	1
9	SLA1000-V101	DRIVE ASSY VERTICAL	1
10	SSCS6061628	SCREW	4
11	W50D324CNF3F6	WET END ASSY	1

PROPRIETARY AND CONFIDENTIAL
 THE INFORMATION CONTAINED HEREIN IS PROPRIETARY TO CHECKPOINT SYSTEMS AND SHALL NOT BE REPRODUCED OR DISCLOSED IN WHOLE OR IN PART OR USED FOR ANY PURPOSE EXCEPT WHEN SUCH USER POSSESSES DIRECT WRITTEN AUTHORIZATION FROM CHECKPOINT SYSTEMS

-- DO NOT SCALE DRAWING --

DOC EFF - 03/03/20			
		DWG. TITLE VERTICAL SLA IEC90 MOTOR 1.5" ASSY	
REV	00	MKT-SLA-TASPV-PL	SIZE B
DRAWING NUMBER		SHEET 30 OF 33	

VERTICAL SLA-P WITH NON-ADJUSTABLE 1.5" INJECTION HEAD



1.5" CERAMIC FKM

ITEM NO.	PART NUMBER	BOM Desc	QTY.
1	CUPBAPM-M19-M28-R	COUPLING	1
2	HHBS6081332	BOLT	4
3	HHNS60616	NUT	4
4	HHNS60813	NUT	4
5	HLWS6106	WASHER	4
6	HLWS6108	WASHER	4
7	SLA0003-05	FLANGE	1
8	SLA0004-01	SUPPORT	1
9	SLA1000-V101	DRIVE ASSY VERTICAL	1
10	SSCS6061628	SCREW	4
11	W50D324CNQ3Q6	WET END ASSY	1

1.5" CERAMIC FFKM

ITEM NO.	PART NUMBER	BOM Desc	QTY.
1	CUPBAPM-M19-M28-R	COUPLING	1
2	HHBS6081332	BOLT	4
3	HHNS60616	NUT	4
4	HHNS60813	NUT	4
5	HLWS6106	WASHER	4
6	HLWS6108	WASHER	4
7	SLA0003-05	FLANGE	1
8	SLA0004-01	SUPPORT	1
9	SLA1000-V101	DRIVE ASSY VERTICAL	1
10	SSCS6061628	SCREW	4
11	W50D324CNF3F6	WET END ASSY	1

PROPRIETARY AND CONFIDENTIAL
 THE INFORMATION CONTAINED HEREIN IS PROPRIETARY TO CHECKPOINT SYSTEMS AND SHALL NOT BE REPRODUCED OR DISCLOSED IN WHOLE OR IN PART OR USED FOR ANY PURPOSE EXCEPT WHEN SUCH USER POSSESSES DIRECT WRITTEN AUTHORIZATION FROM CHECKPOINT SYSTEMS

-- DO NOT SCALE DRAWING --

DOC EFF - 03/03/20			
		DWG. TITLE VERTICAL SLA IEC100 MOTOR 1.5" ASSY	
REV	00	MKT-SLA-TASPV-PL	SIZE B
DRAWING NUMBER		SHEET 31 OF 33	

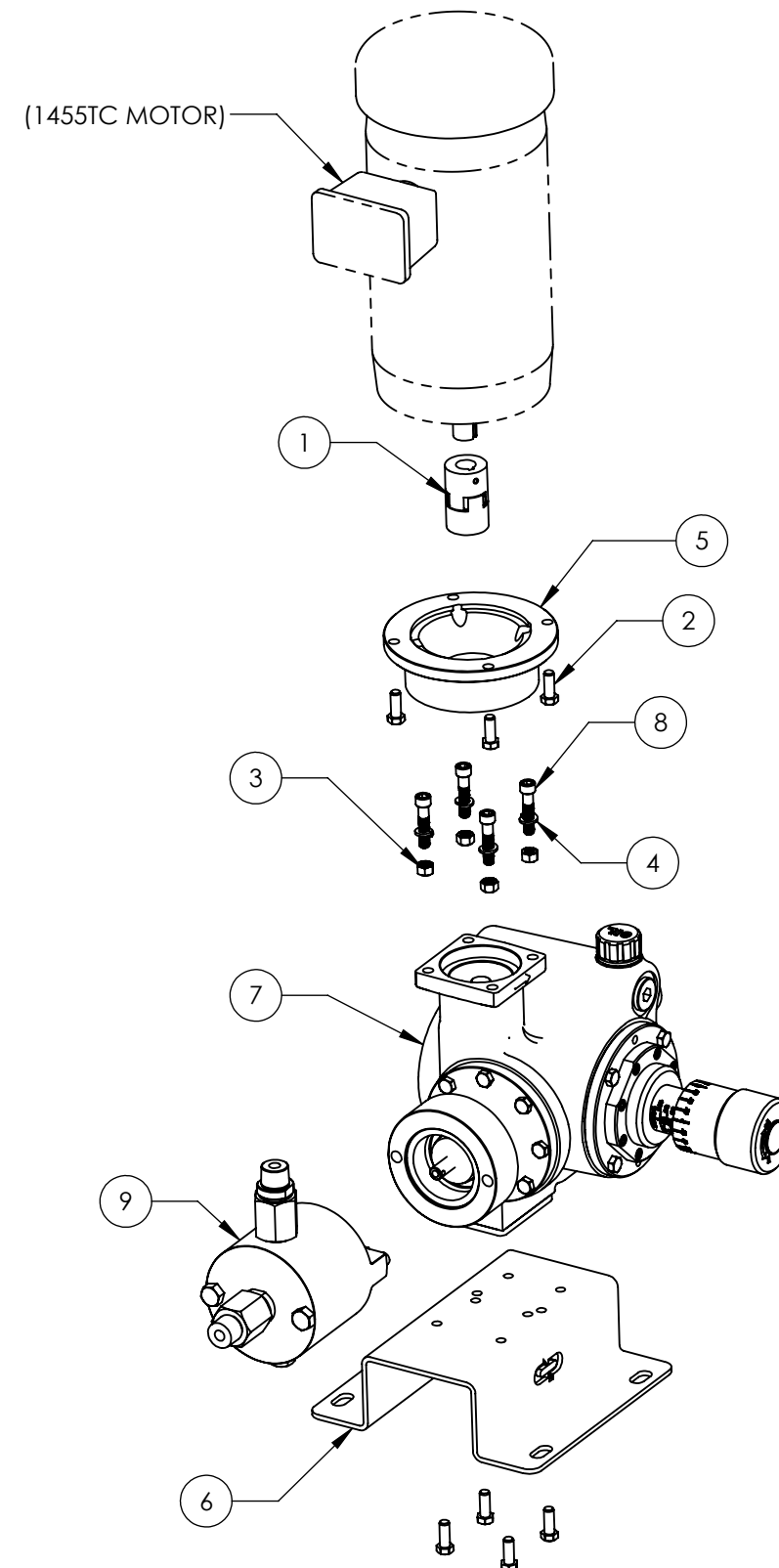
VERTICAL SLA-P WITH NON-ADJUSTABLE 1.5" INJECTION HEAD

1.5" CERAMIC FKM

ITEM NO.	PART NUMBER	BOM Desc	QTY.
1	CUPAAPM-E07-M19-R	COUPLING	1
2	HHBS6061616	BOLT	4
3	HHNS60616	NUT	4
4	HLWS6106	WASHER	4
5	SLA0003-01	FLANGE	1
6	SLA0004-01	SUPPORT	1
7	SLA1000-V101	DRIVE ASSY VERTICAL	1
8	SSCS6061628	SCREW	4
9	W50D324CNQ3Q6	WET END ASSY	1

1.5" CERAMIC FFKM

ITEM NO.	PART NUMBER	BOM Desc	QTY.
1	CUPAAPM-E07-M19-R	COUPLING	1
2	HHBS6061616	BOLT	4
3	HHNS60616	NUT	4
4	HLWS6106	WASHER	4
5	SLA0003-01	FLANGE	1
6	SLA0004-01	SUPPORT	1
7	SLA1000-V101	DRIVE ASSY VERTICAL	1
8	SSCS6061628	SCREW	4
9	W50D324CNF3F6	WET END ASSY	1

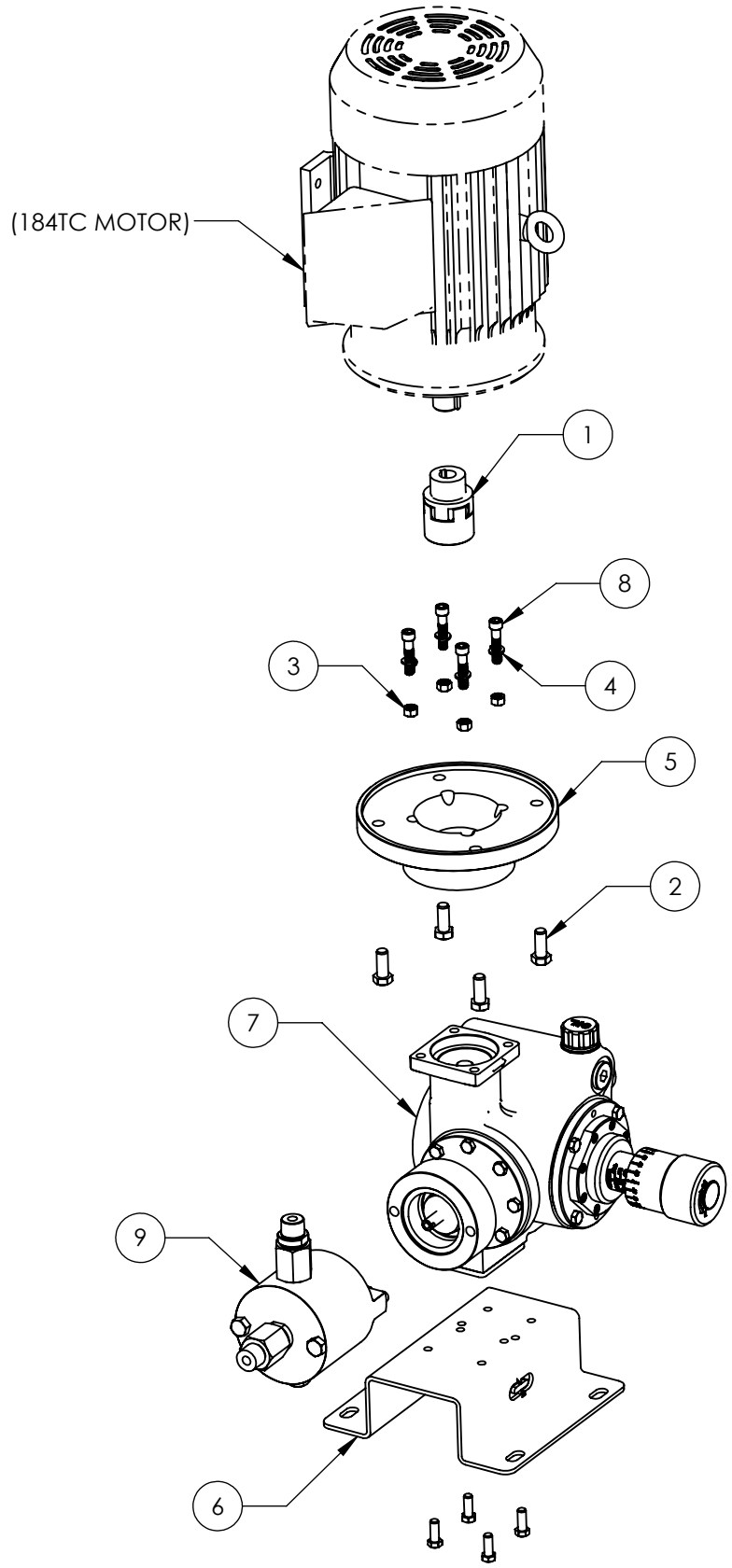


PROPRIETARY AND CONFIDENTIAL
 THE INFORMATION CONTAINED HEREIN IS PROPRIETARY TO CHECKPOINT SYSTEMS AND SHALL NOT BE REPRODUCED OR DISCLOSED IN WHOLE OR IN PART OR USED FOR ANY PURPOSE EXCEPT WHEN SUCH USER POSSESSES DIRECT WRITTEN AUTHORIZATION FROM CHECKPOINT SYSTEMS

-- DO NOT SCALE DRAWING --

DOC EFF - 03/03/20			
		DWG. TITLE VERTICAL SLA 143TC MOTOR 1.5" ASSY	
REV	00	MKT-SLA-TASPV-PL	SIZE B
DRAWING NUMBER		SHEET 32 OF 33	

VERTICAL SLA-P WITH NON-ADJUSTABLE 1.5" INJECTION HEAD



1.5" CERAMIC FKM

ITEM NO.	PART NUMBER	BOM Desc	QTY.
1	CUPBAPM-E09-M19-R	COUPLING	1
2	HHBS6081320	BOLT	4
3	HHNS60616	NUT	4
4	HLWS6106	WASHER	4
5	SLA0003-02	FLANGE	1
6	SLA0004-01	SUPPORT	1
7	SLA1000-V101	DRIVE ASSY VERTICAL	1
8	SSCS6061628	SCREW	4
9	W50D324CNQ3Q6	WET END ASSY	1

1.5" CERAMIC FFKM

ITEM NO.	PART NUMBER	BOM Desc	QTY.
1	CUPBAPM-E09-M19-R	COUPLING	1
2	HHBS6081320	BOLT	4
3	HHNS60616	NUT	4
4	HLWS6106	WASHER	4
5	SLA0003-02	FLANGE	1
6	SLA0004-01	SUPPORT	1
7	SLA1000-V101	DRIVE ASSY VERTICAL	1
8	SSCS6061628	SCREW	4
9	W50D324CNF3F6	WET END ASSY	1

PROPRIETARY AND CONFIDENTIAL
 THE INFORMATION CONTAINED HEREIN IS PROPRIETARY TO CHECKPOINT SYSTEMS AND SHALL NOT BE REPRODUCED OR DISCLOSED IN WHOLE OR IN PART OR USED FOR ANY PURPOSE EXCEPT WHEN SUCH USER POSSESSES DIRECT WRITTEN AUTHORIZATION FROM CHECKPOINT SYSTEMS

-- DO NOT SCALE DRAWING --

DOC EFF - 03/03/20			
		DWG. TITLE VERTICAL SLA 184TC MOTOR 1.5" ASSY	
REV 00	MKT-SLA-TASPV-PL	SIZE B	
DRAWING NUMBER		SHEET 33 OF 33	