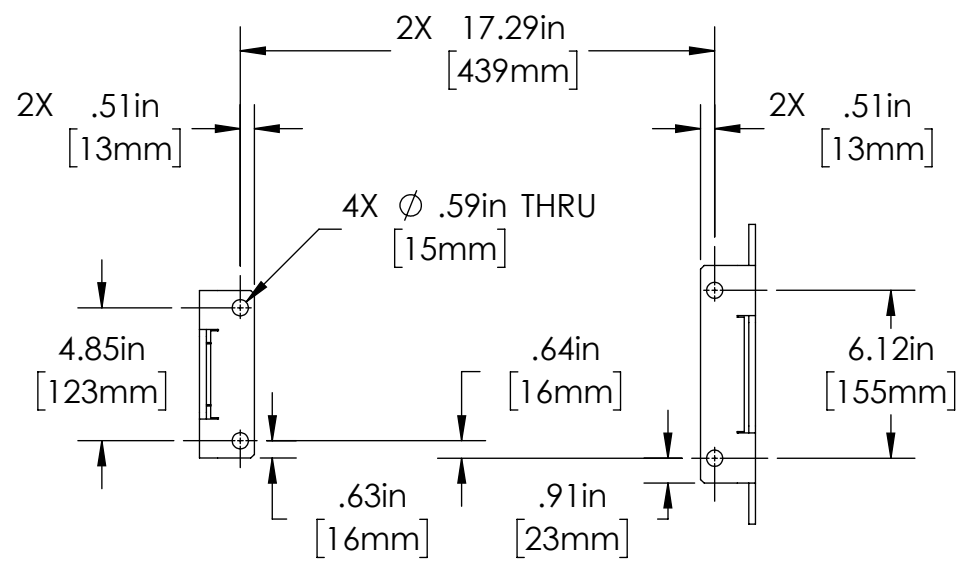
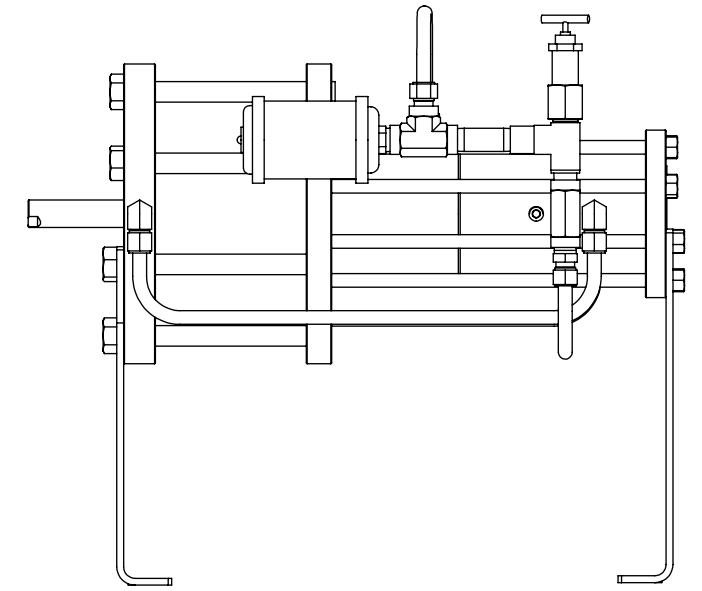
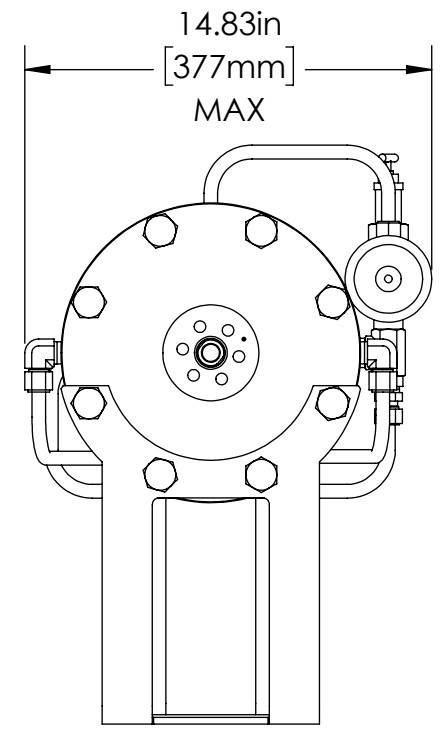
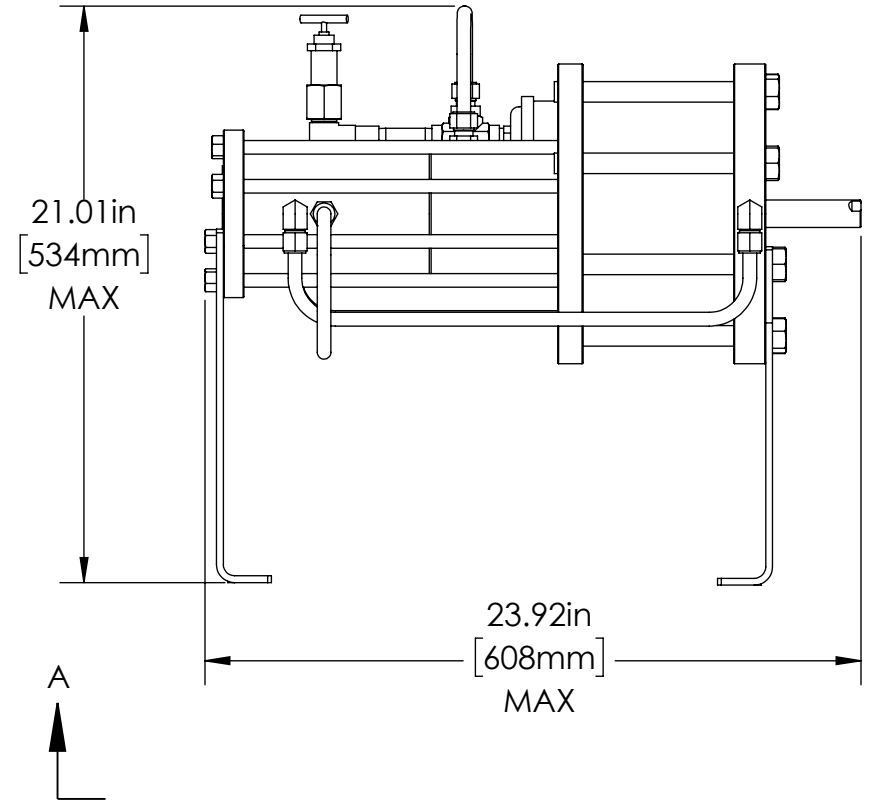
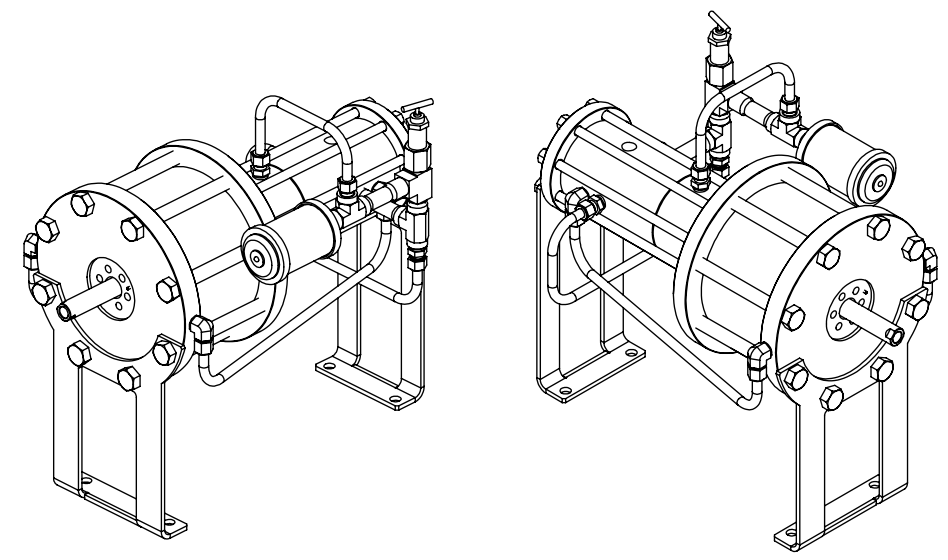
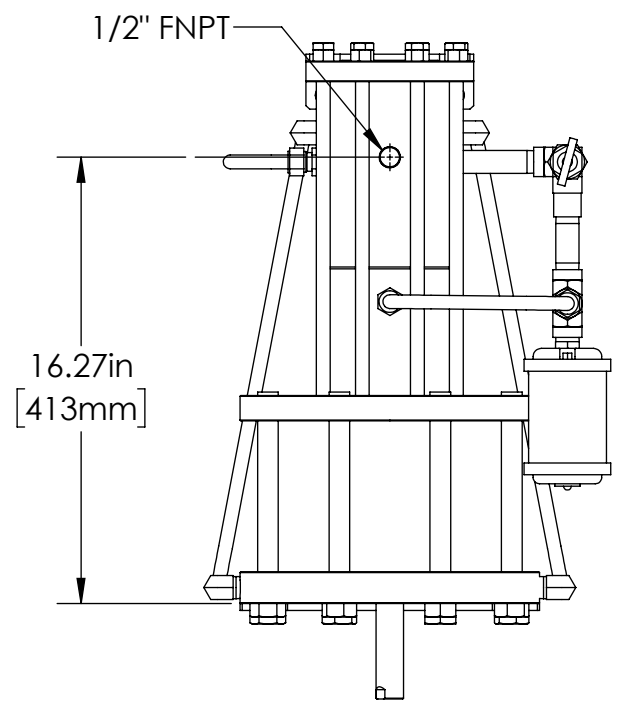


8	7
PART #	MATERIAL
P84MSA1	316SS

1
DATE
JULY-3-2025
APPROVED
JF



VIEW A-A
SOME COMPONENTS REMOVED FOR CLARITY



WEIGHT 160.6 lb / 72.8 kg

PROPRIETARY AND CONFIDENTIAL
THE INFORMATION CONTAINED HEREIN IS PROPRIETARY TO CHECKPOINT SYSTEMS AND SHALL NOT BE REPRODUCED OR DISCLOSED IN WHOLE OR IN PART OR USED FOR ANY PURPOSE EXCEPT WHEN SUCH USER POSSESSES DIRECT WRITTEN AUTHORIZATION FROM CHECKPOINT SYSTEMS



MARKETING DRAWING		
CheckPoint Pumps & Systems		
DWG. TITLE		
MOTOR SUB-ASSY 8400		
REV		SIZE
013	P84MSA1	B
DRAWING NUMBER		SHEET 1 OF 4

8 7 6 5 4 3 2 1

D

D

C

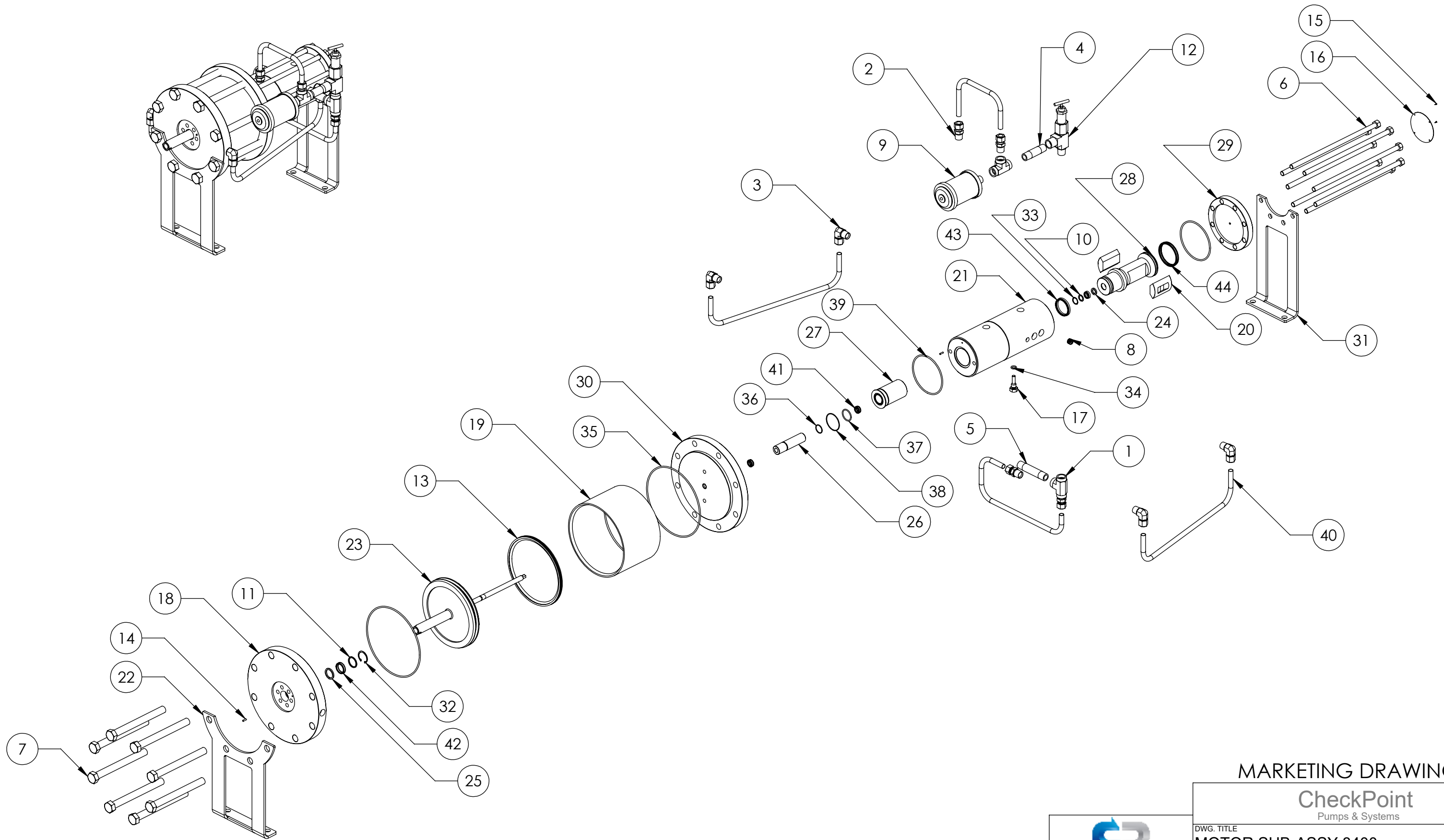
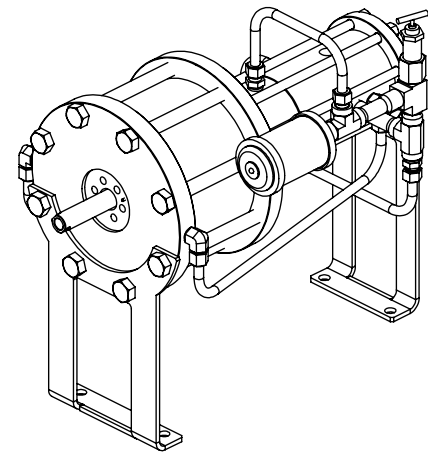
C

B

B

A

A



MARKETING DRAWING

CheckPoint
Pumps & Systems

DWG. TITLE
MOTOR SUB-ASSY 8400

REV
013

P84MSA1

SIZE
B

DRAWING NUMBER

SHEET 2 OF 4

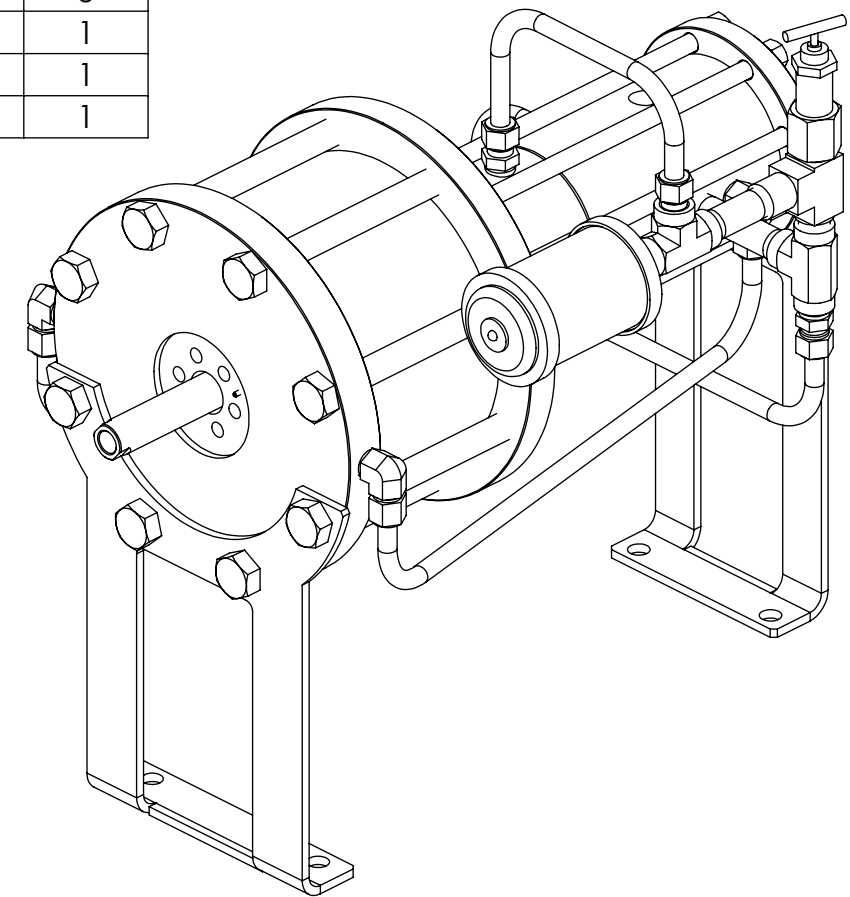


PROPRIETARY AND CONFIDENTIAL
THE INFORMATION CONTAINED HEREIN IS PROPRIETARY TO CHECKPOINT SYSTEMS AND SHALL NOT BE REPRODUCED OR DISCLOSED IN WHOLE OR IN PART OR USED FOR ANY PURPOSE EXCEPT WHEN SUCH USER POSSESSES DIRECT WRITTEN AUTHORIZATION FROM CHECKPOINT SYSTEMS

8 7 6 5 4 3 2 1

ITEM NO.	PART NUMBER	DESCRIPTION	QTY.
1	FT8-8-8FT-SS	TEE	2
2	FT8MSC8N316	CONNECTOR	4
3	FT8MSEL8N316	ELBOW	4
4	FT8N48SCH80316	NIPPLE	1
5	FT8N64SCH80316	NIPPLE	1
6	HHBS608131290	BOLT - HOUSING	8
7	HHBS6112100771	BOLT - HEAD	8
8	HHPLUGS6158G	PLUG	1
9	HSILMX05-108	MUFFLER	1
10	HWSHS6108	WASHER - FLAT	1
11	HWSHS6116	WASHER- FLAT	2
12	NV0500-1	NEEDLE VALVE	1
13	OPTPTFE1128P	OPTIRING	1
14	P2511	ALIGNMENT PIN	2
15	P2551	U-DRIVE SCREW	4
16	P8450	SERIAL NUM PLATE	1
17	PASS6158G	ALIGNMENT SCREW	1
18	PBFLGMS61128	BOTTOM FLANGE	1
19	PCYLMS61128	CYLINDER	1
20	PDSTC158G	D-SLIDE	2
21	PHOS6158G	HOUSING	1
22	PLLS628	LOWER LEG	1
23	PPRLS6281SU	PISTON SUB ASSEMBLY	1
24	PRBDL108	ROD BUSHING	1
25	PRBDL116	ROD BUSHING	1
26	PSLDL158G	SPACER SLEEVE	1
27	PSLVS6158G	SLEEVE	1

ITEM NO.	PART NUMBER	DESCRIPTION	QTY.
28	PSPDL158	SPOOL	1
29	PTCOVS6158G	FLANGE	1
30	PTFLGMS61128	TOP FLANGE	1
31	PULS6258G	UPPER LEG	1
32	RRBS6220	SNAP RING	1
33	RRSS6212	SNAP RING	1
34	SELORHN-0703	O-RING	1
35	SELORHN-12804	O-RING	2
36	SELORHN-1402	O-RING	1
37	SELORHN-1903	O-RING	1
38	SELORHN-3002	O-RING	1
39	SELORHN-7004	O-RING	2
40	ST35S608S	1/2" x 0.035" 316SS TUBE	4
41	UCSUR1120804	U-CUP SEAL	3
42	UCSUR1201604	U-CUP SEAL	1
43	UCSUR1322804	U-CUP SEAL	1
44	UCSUR1444004	U-CUP SEAL	1



MARKETING DRAWING

CheckPoint
Pumps & Systems

DWG. TITLE		SIZE B
MOTOR SUB-ASSY 8400		
REV	P84MSA1	DRAWING NUMBER
013		
		SHEET 3 OF 4

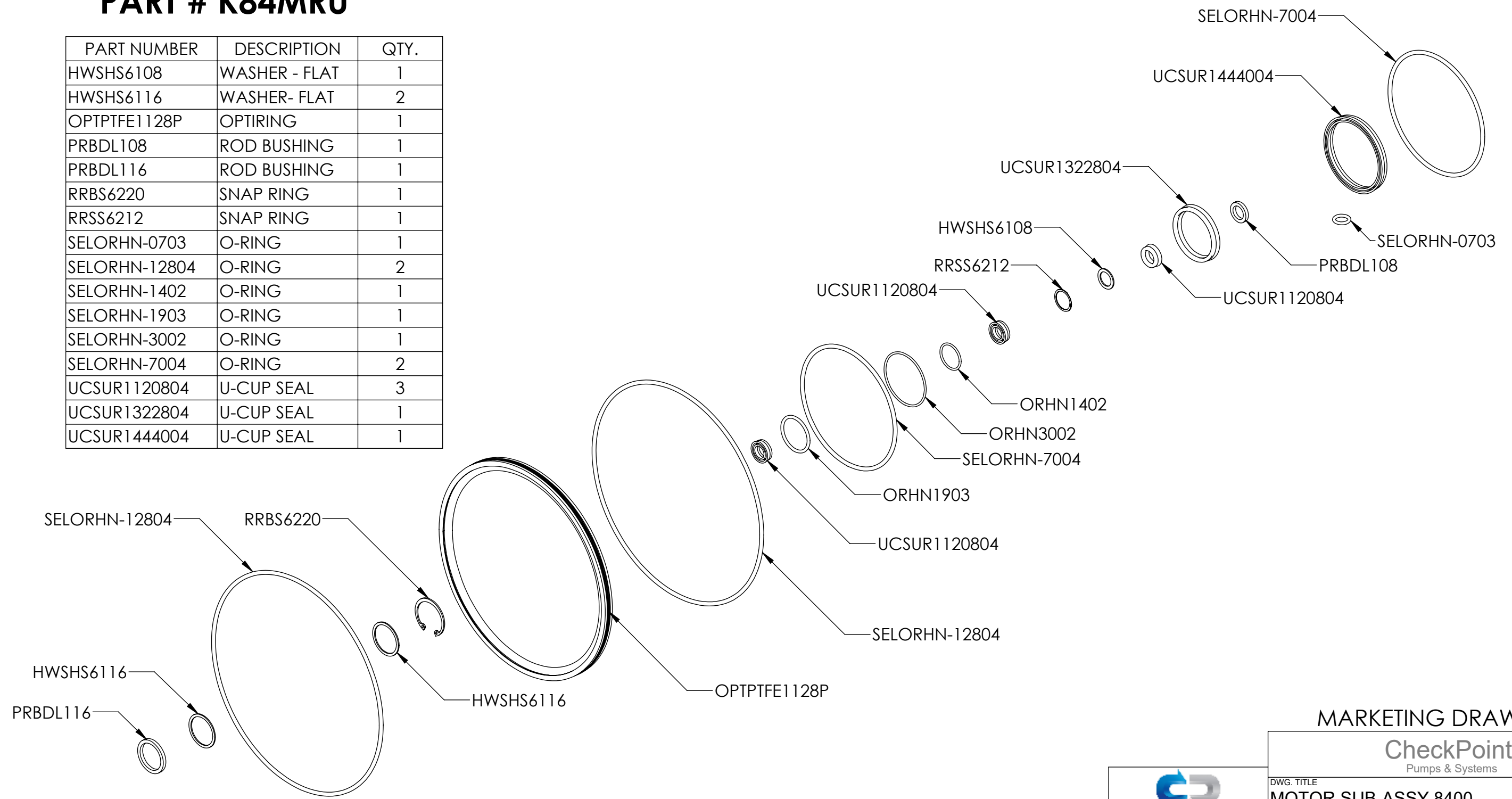


PROPRIETARY AND CONFIDENTIAL
THE INFORMATION CONTAINED HEREIN IS PROPRIETARY TO CHECKPOINT SYSTEMS AND SHALL NOT BE REPRODUCED OR DISCLOSED IN WHOLE OR IN PART OR USED FOR ANY PURPOSE EXCEPT WHEN SUCH USER POSSESSES DIRECT WRITTEN AUTHORIZATION FROM CHECKPOINT SYSTEMS

8400 MOTOR SEAL KIT

PART # K84MRU

PART NUMBER	DESCRIPTION	QTY.
HWSHS6108	WASHER - FLAT	1
HWSHS6116	WASHER- FLAT	2
OPTPTFE1128P	OPTIRING	1
PRBDL108	ROD BUSHING	1
PRBDL116	ROD BUSHING	1
RRBS6220	SNAP RING	1
RRSS6212	SNAP RING	1
SELORHN-0703	O-RING	1
SELORHN-12804	O-RING	2
SELORHN-1402	O-RING	1
SELORHN-1903	O-RING	1
SELORHN-3002	O-RING	1
SELORHN-7004	O-RING	2
UCSUR1120804	U-CUP SEAL	3
UCSUR1322804	U-CUP SEAL	1
UCSUR1444004	U-CUP SEAL	1



MARKETING DRAWING

CheckPoint
Pumps & Systems

DWG. TITLE		SIZE
MOTOR SUB-ASSY 8400		
REV		
013	P84MSA1	B
DRAWING NUMBER		SHEET 4 OF 4



PROPRIETARY AND CONFIDENTIAL
THE INFORMATION CONTAINED HEREIN IS PROPRIETARY TO CHECKPOINT SYSTEMS AND SHALL NOT BE REPRODUCED OR DISCLOSED IN WHOLE OR IN PART OR USED FOR ANY PURPOSE EXCEPT WHEN SUCH USER POSSESSES DIRECT WRITTEN AUTHORIZATION FROM CHECKPOINT SYSTEMS