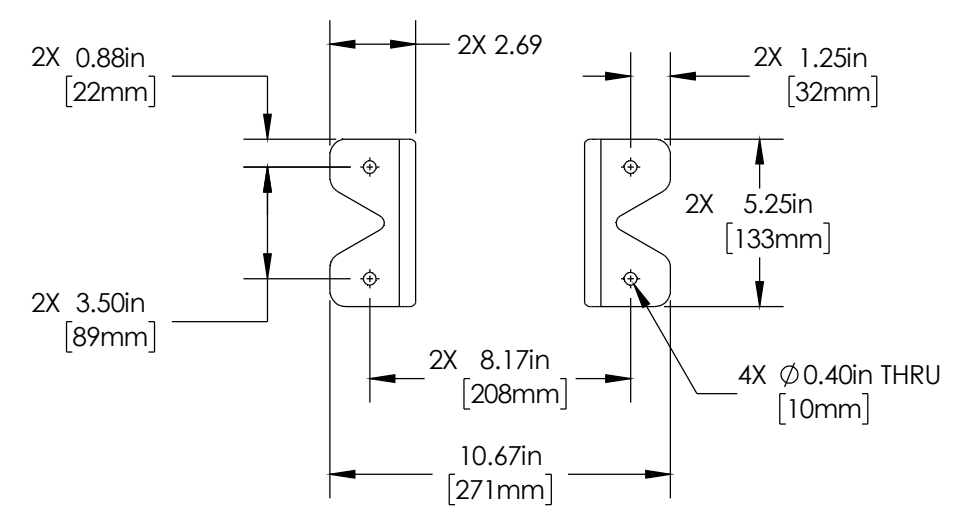
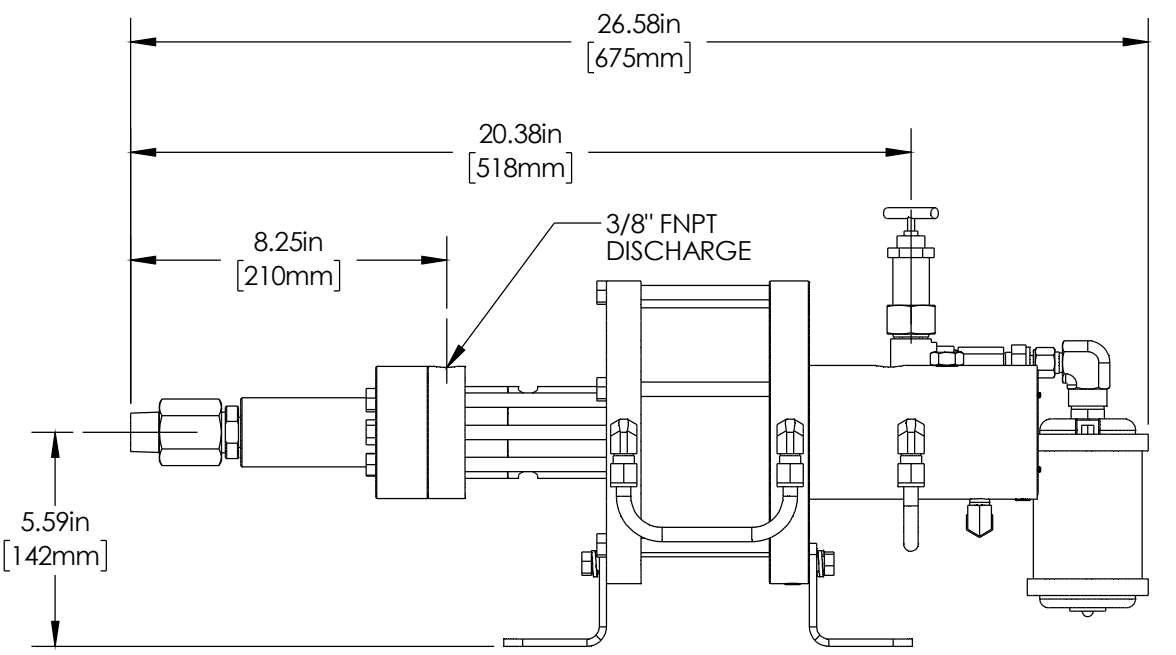
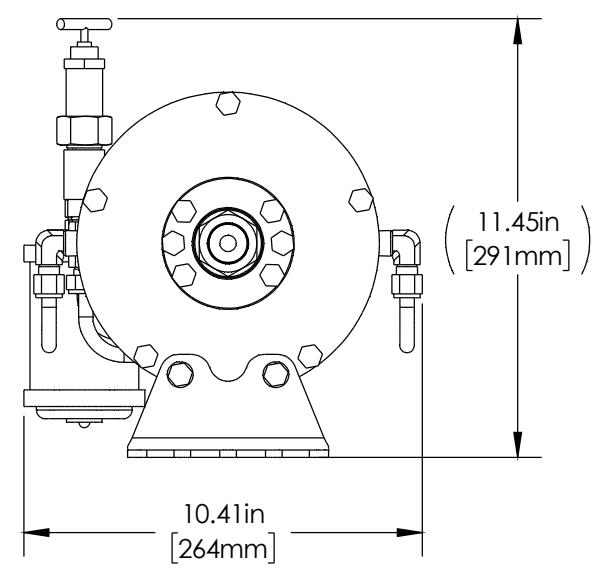
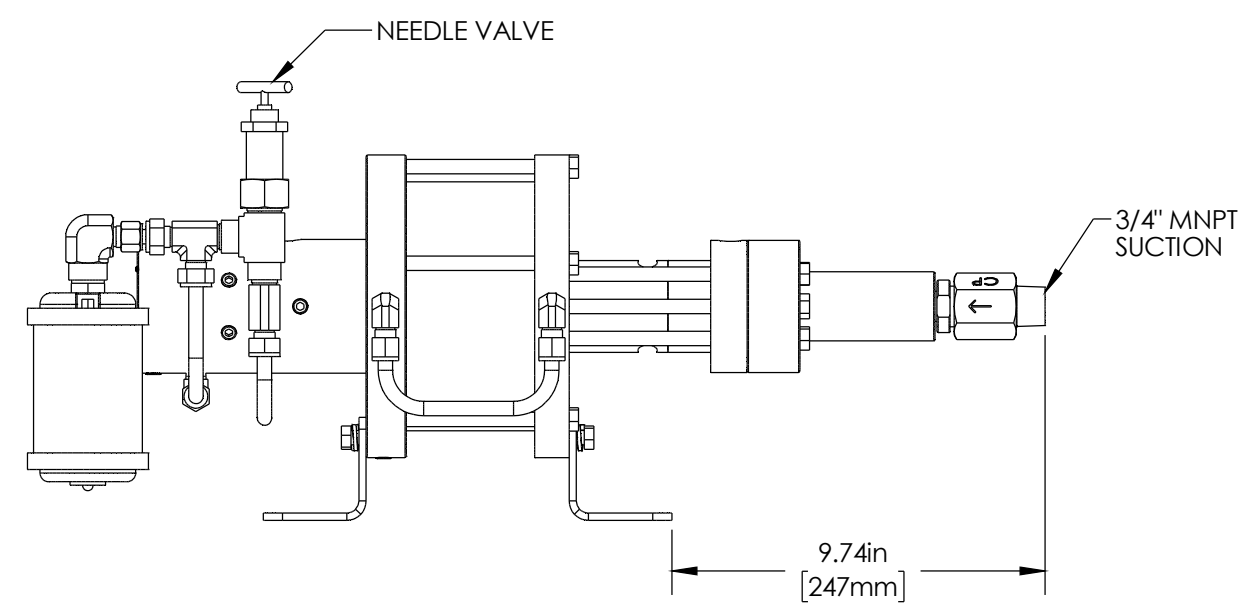
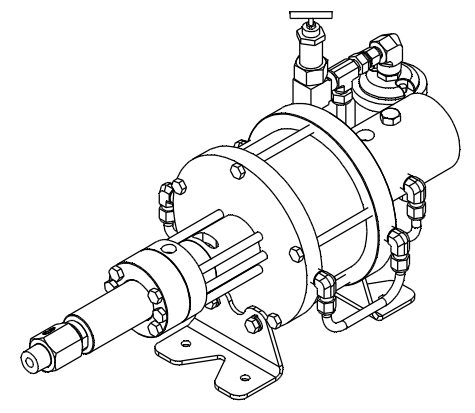


DATE	APPROVED
MAR-25-25	JF



BOTTOM VIEW

MARKETING DRAWING

CheckPoint
Pumps & Systems



DWG. TITLE		P6212 3/4"		SIZE B
TOP LEVEL ASSEMBLY		REV 004		
DRAWING NUMBER		P6212CNQ3		SHEET 1 OF 2

WEIGHT	70 lb / 31.7 kg
--------	-----------------

PROPRIETARY AND CONFIDENTIAL
THE INFORMATION CONTAINED HEREIN IS PROPRIETARY TO CHECKPOINT SYSTEMS AND SHALL NOT BE REPRODUCED OR DISCLOSED IN WHOLE OR IN PART OR USED FOR ANY PUPOSE EXCEPT WHEN SUCH USER POSSESSES DIRECT WRITTEN AUTHORIZATION FROM CHECKPOINT SYSTEMS

P6212CNQ3 - CERAMIC - FKM

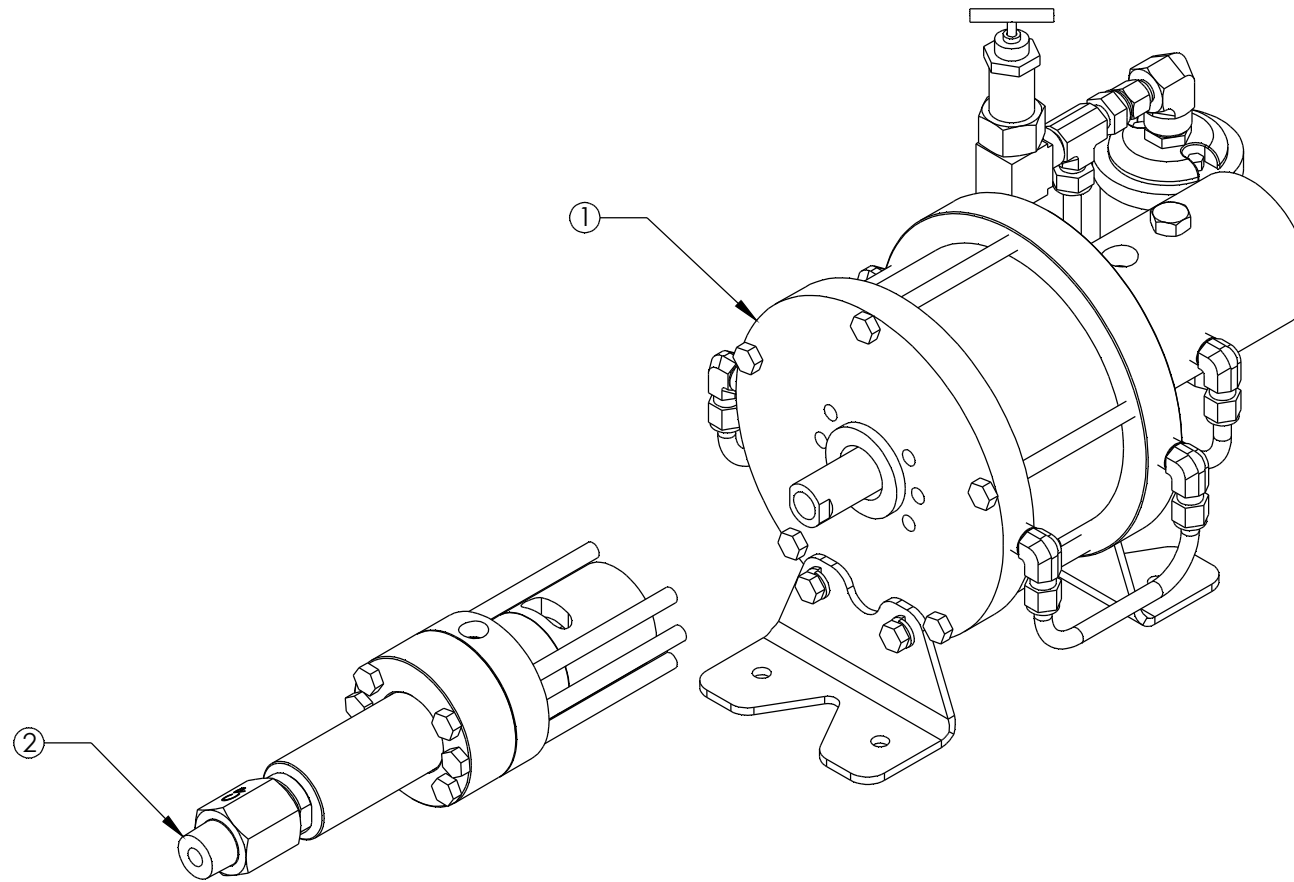
ITEM NO.	Number	DESCRIPTION	QTY.
1	P62MSA1	MOTOR	1
2	W62D312CNQPN3Q6	6212 PUMP ASSY.	1

P6212CF3 - CERAMIC - FFKM

ITEM NO.	Number	DESCRIPTION	QTY.
1	P62MSA1	MOTOR	1
2	W62D312CNFPN3F6	6212 PUMP ASSY.	1

P6212CNH3 - CERAMIC - HNBR

ITEM NO.	Number	DESCRIPTION	QTY.
1	P62MSA1	MOTOR	1
2	W62D312CNHFN3H6	6212 PUMP ASSY.	1



NOTE: SERIAL NUMBER PLATE / ATTACH SCREWS NOT SHOWN

MARKETING DRAWING

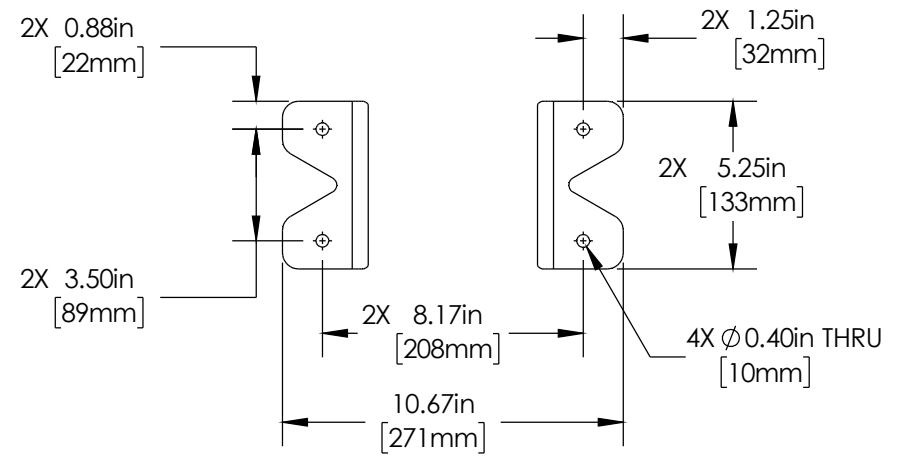
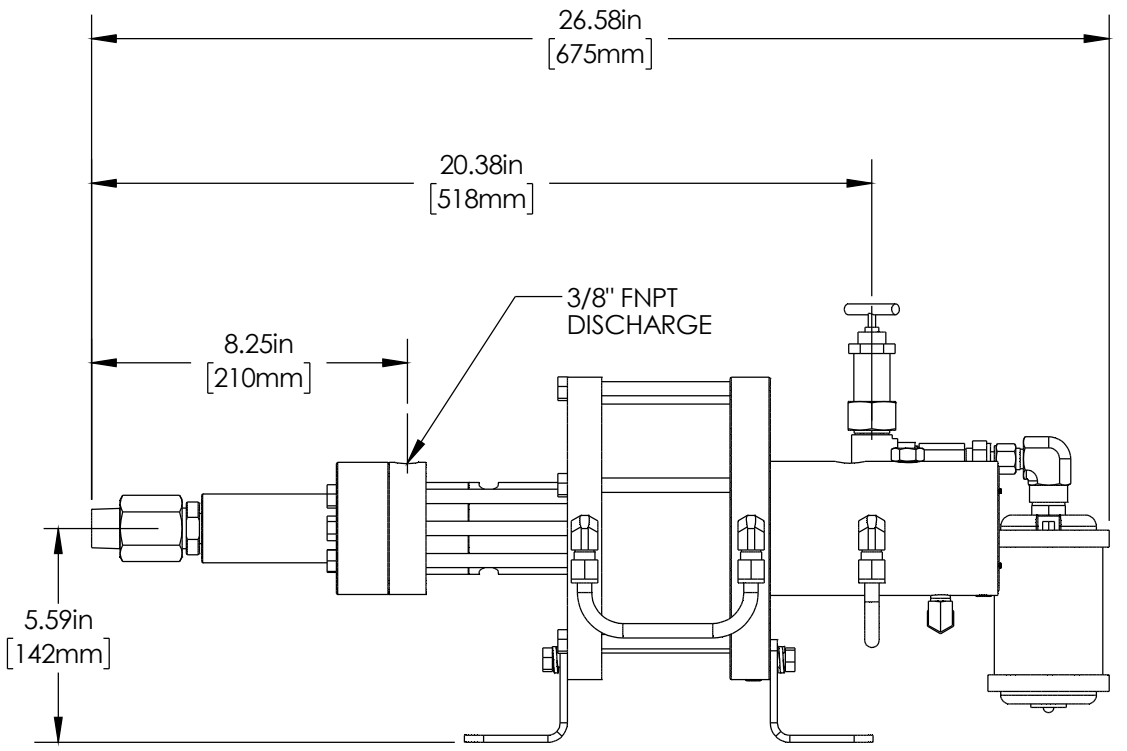
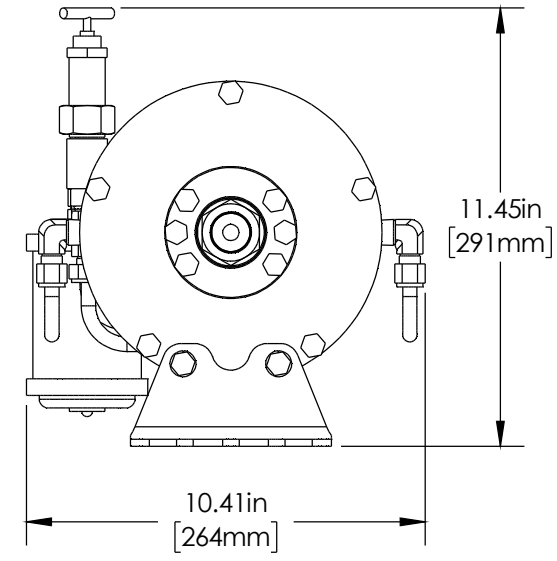
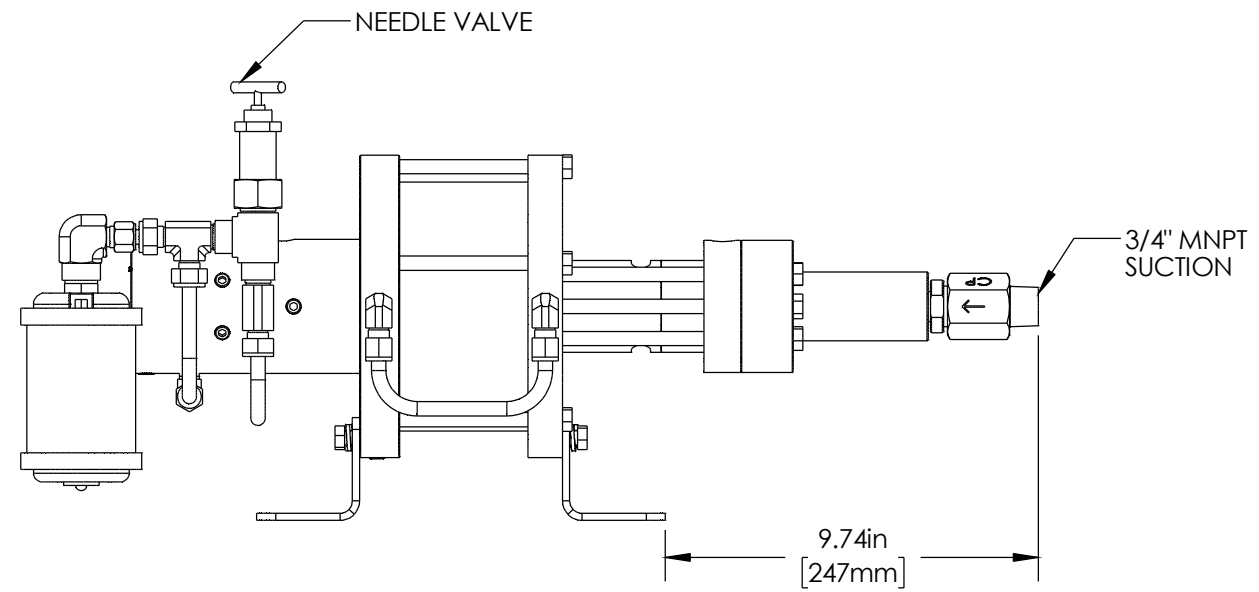
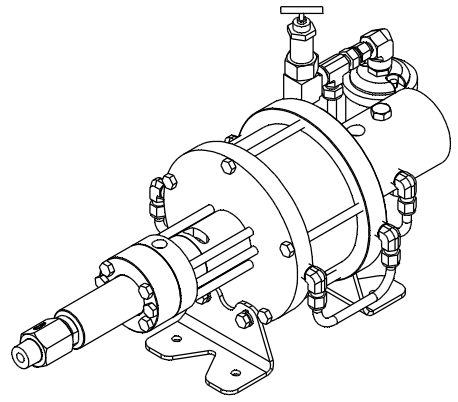
CheckPoint
Pumps & Systems



DWG. TITLE P6212 3/4" TOP LEVEL ASSEMBLY		SIZE B
REV 004	P6212CNQ3	
DRAWING NUMBER		SHEET 2 OF 2

PROPRIETARY AND CONFIDENTIAL
THE INFORMATION CONTAINED HEREIN IS PROPRIETARY TO CHECKPOINT SYSTEMS AND SHALL NOT BE REPRODUCED OR DISCLOSED IN WHOLE OR IN PART OR USED FOR ANY PUPOSE EXCEPT WHEN SUCH USER POSSESSES DIRECT WRITTEN AUTHORIZATION FROM CHECKPOINT SYSTEMS

DATE	APPROVED
MAR-25-25	JF



BOTTOM VIEW

MARKETING DRAWING

CheckPoint
Pumps & Systems

DWG. TITLE
P6212 3/4"
TOP LEVEL ASSEMBLY

REV
004 P6212NNQ3

SIZE
B



PROPRIETARY AND CONFIDENTIAL
THE INFORMATION CONTAINED HEREIN IS PROPRIETARY TO CHECKPOINT SYSTEMS AND SHALL NOT BE REPRODUCED OR DISCLOSED IN WHOLE OR IN PART OR USED FOR ANY PUPOSE EXCEPT WHEN SUCH USER POSSESSES DIRECT WRITTEN AUTHORIZATION FROM CHECKPOINT SYSTEMS

WEIGHT	70 lb / 31.7 kg
--------	-----------------

P6212NNQ3 - NITRONIC - FKM

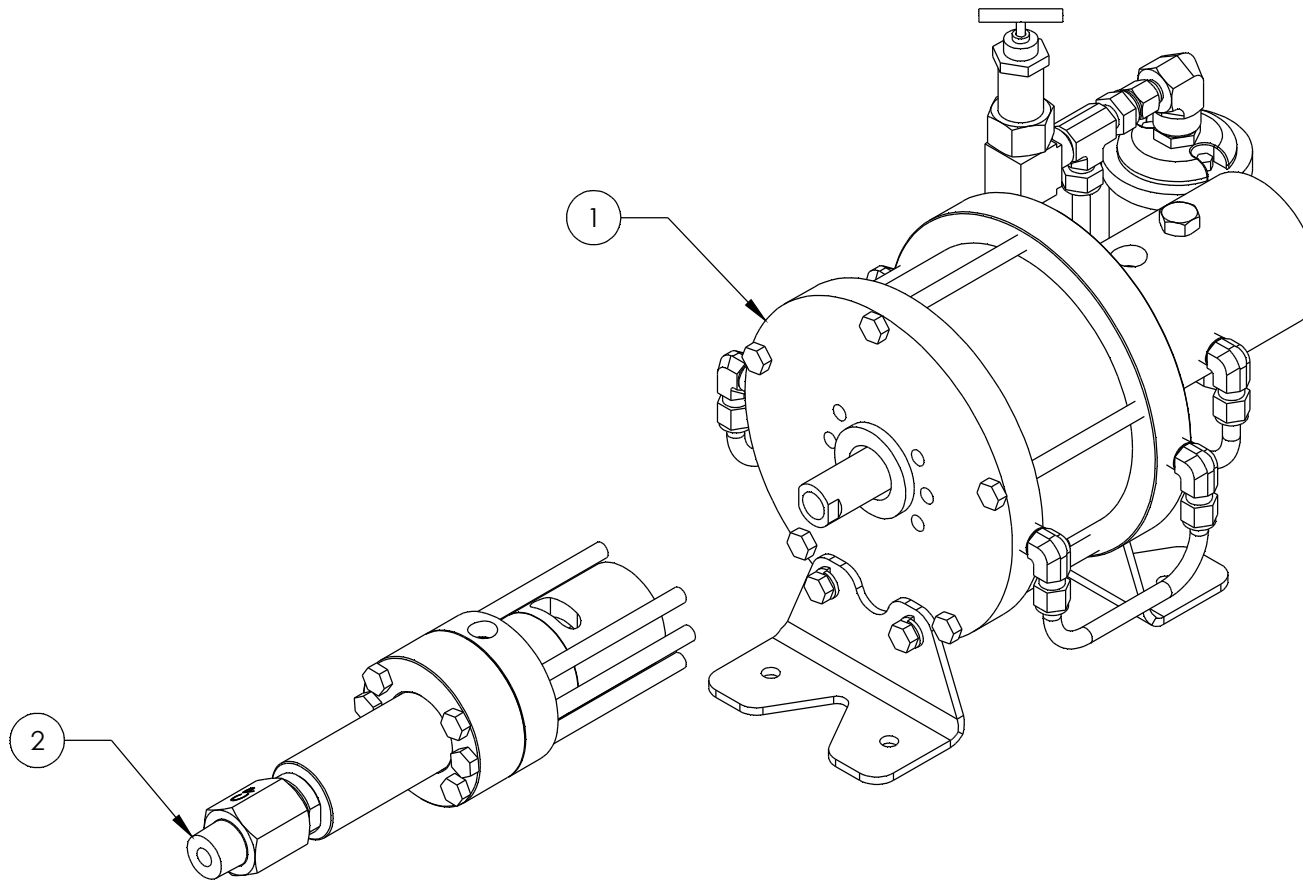
ITEM NO.	Number	DESCRIPTION	QTY.
1	P62MSA1	MOTOR	1
2	W62D312NNQPN3Q6	6212 PUMP ASSY	1

P6212NNF3 - NITRONIC - FFKM

ITEM NO.	Number	DESCRIPTION	QTY.
1	P62MSA1	MOTOR	1
2	W62D312NNFPN3F6	6212 PUMP ASSY	1

P6212NNH3 - NITRONIC - HNBR

ITEM NO.	Number	DESCRIPTION	QTY.
1	P62MSA1	MOTOR	1
2	W62D312NNHPN3H6	6212 PUMP ASSY.	1



NOTE: SERIAL NUMBER PLATE / ATTACH SCREWS NOT SHOWN

MARKETING DRAWING

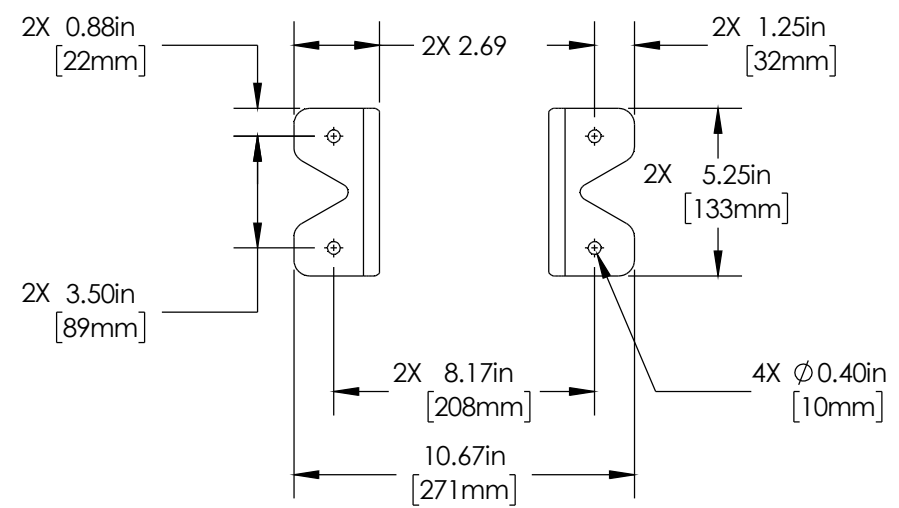
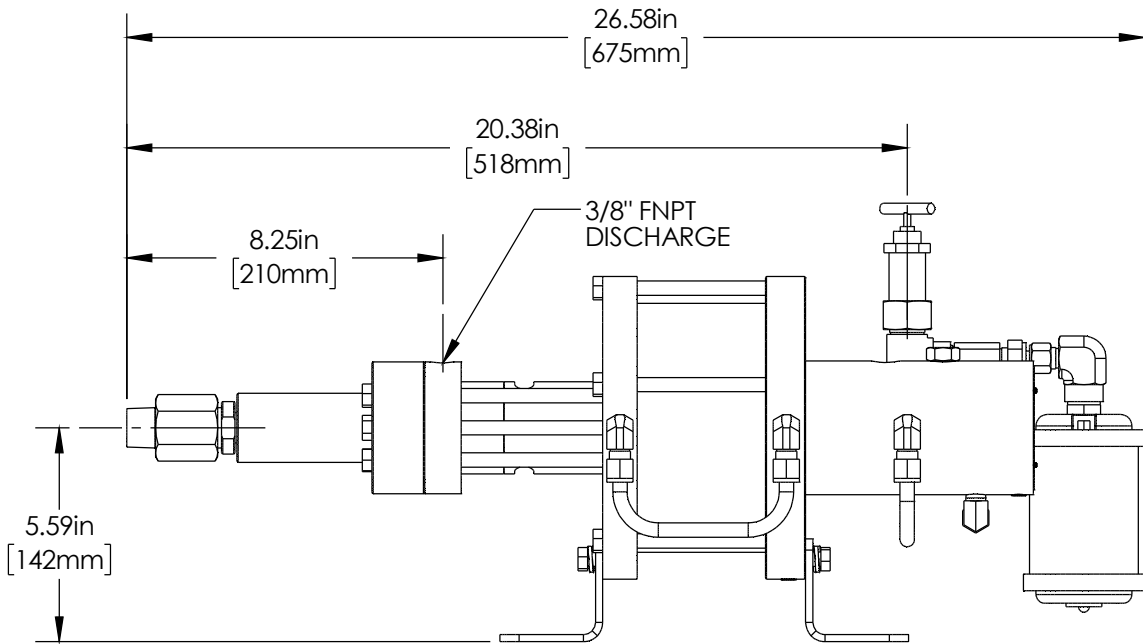
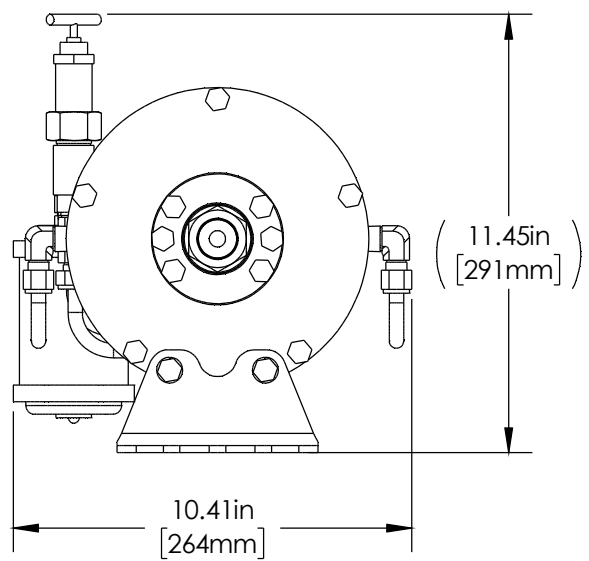
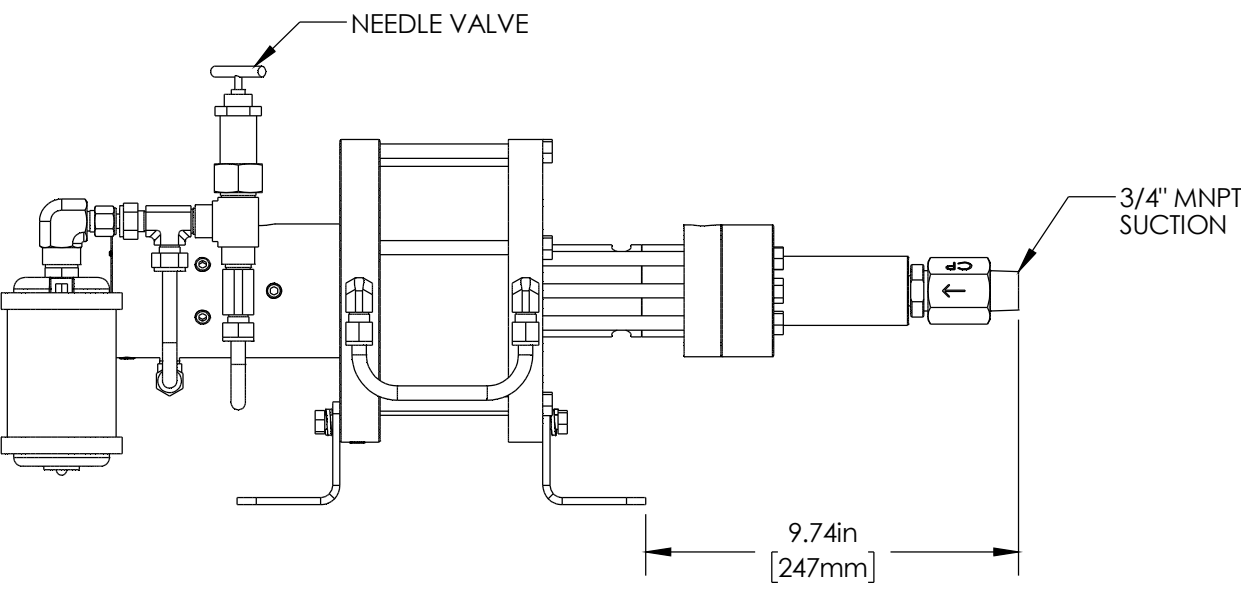
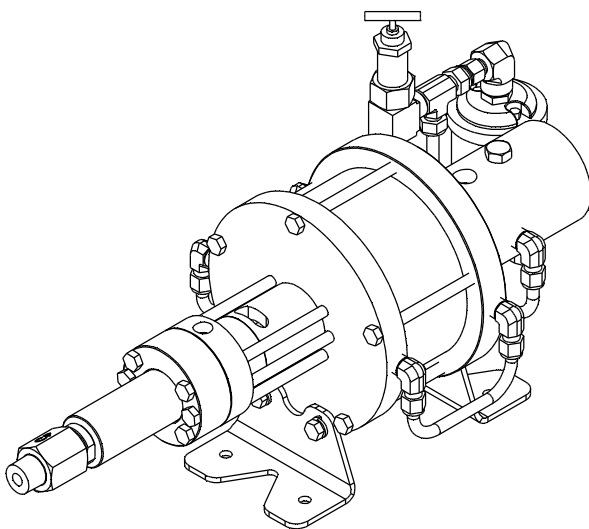
CheckPoint
Pumps & Systems



DWG. TITLE		SIZE
P6212 3/4" TOP LEVEL ASSEMBLY		
REV		
004	P6212NNQ3	B
DRAWING NUMBER		SHEET 2 OF 2

PROPRIETARY AND CONFIDENTIAL
THE INFORMATION CONTAINED HEREIN IS PROPRIETARY TO CHECKPOINT SYSTEMS AND SHALL NOT BE REPRODUCED OR DISCLOSED IN WHOLE OR IN PART OR USED FOR ANY PUPOSE EXCEPT WHEN SUCH USER POSSESSES DIRECT WRITTEN AUTHORIZATION FROM CHECKPOINT SYSTEMS

DATE	APPROVED
MAR-25-25	JF



BOTTOM VIEW

MARKETING DRAWING

CheckPoint
Pumps & Systems



DWG. TITLE
P6212 3/4" TOP LEVEL ASSEMBLY

REV
004 P6212HHQH

SIZE
B

DRAWING NUMBER SHEET 1 OF 2

WEIGHT	70 lb / 31.7 kg
--------	-----------------

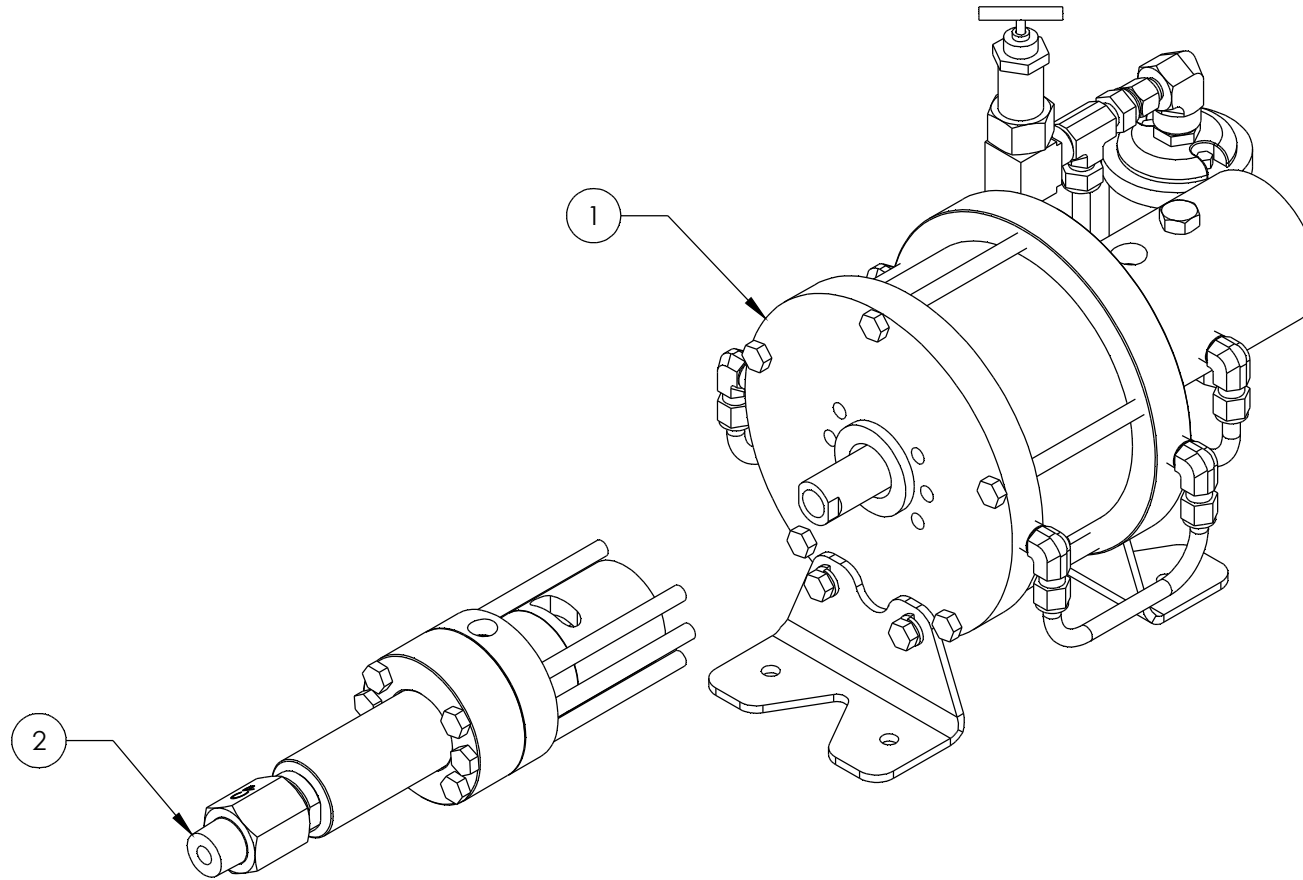
PROPRIETARY AND CONFIDENTIAL
THE INFORMATION CONTAINED HEREIN IS PROPRIETARY TO CHECKPOINT SYSTEMS AND SHALL NOT BE REPRODUCED OR DISCLOSED IN WHOLE OR IN PART OR USED FOR ANY PUPOSE EXCEPT WHEN SUCH USER POSSESSES DIRECT WRITTEN AUTHORIZATION FROM CHECKPOINT SYSTEMS

P6212HHQH - HASTELLOY - FKM

ITEM NO.	Number	DESCRIPTION	QTY.
1	P62MSA1	MOTOR	1
2	W62D312HNQPNHQ6	6212 PUMP ASSY.	1

P6212HHFH - HASTELLOY - FFKM

ITEM NO.	Number	DESCRIPTION	QTY.
1	P62MSA1	MOTOR	1
2	W62D312HNFPNHF6	6212 PUMP ASSY.	1



NOTE: SERIAL NUMBER PLATE / ATTACH SCREWS NOT SHOWN

MARKETING DRAWING

CheckPoint
Pumps & Systems

DWG. TITLE		SIZE
P6212 3/4" TOP LEVEL ASSEMBLY		
REV		
004	P6212HHQH	B
DRAWING NUMBER		SHEET 2 OF 2



PROPRIETARY AND CONFIDENTIAL
THE INFORMATION CONTAINED HEREIN IS PROPRIETARY TO CHECKPOINT SYSTEMS AND SHALL NOT BE REPRODUCED OR DISCLOSED IN WHOLE OR IN PART OR USED FOR ANY PUPOSE EXCEPT WHEN SUCH USER POSSESSES DIRECT WRITTEN AUTHORIZATION FROM CHECKPOINT SYSTEMS