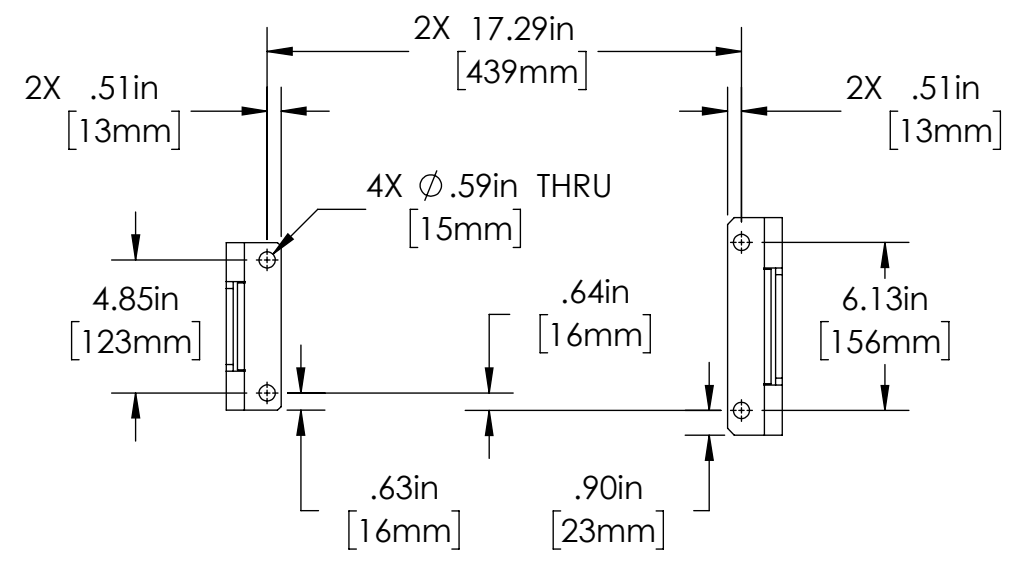
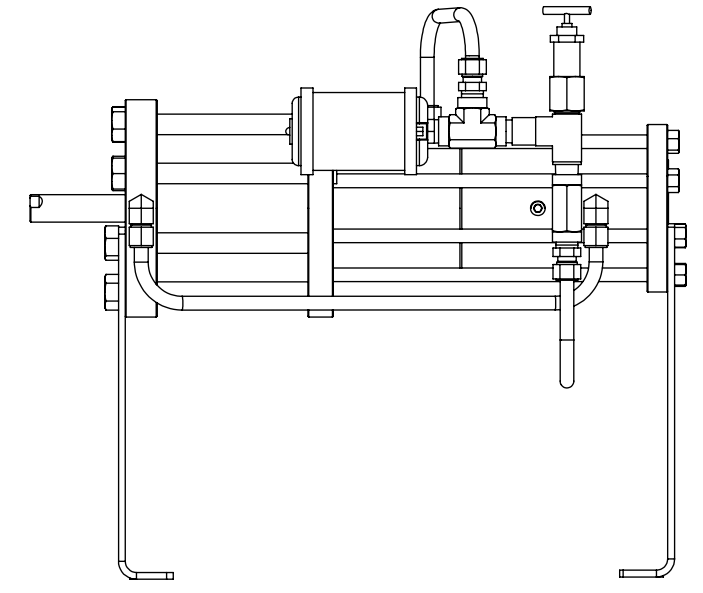
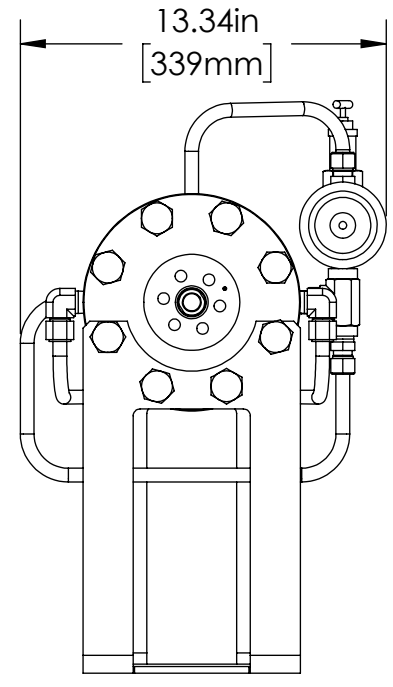
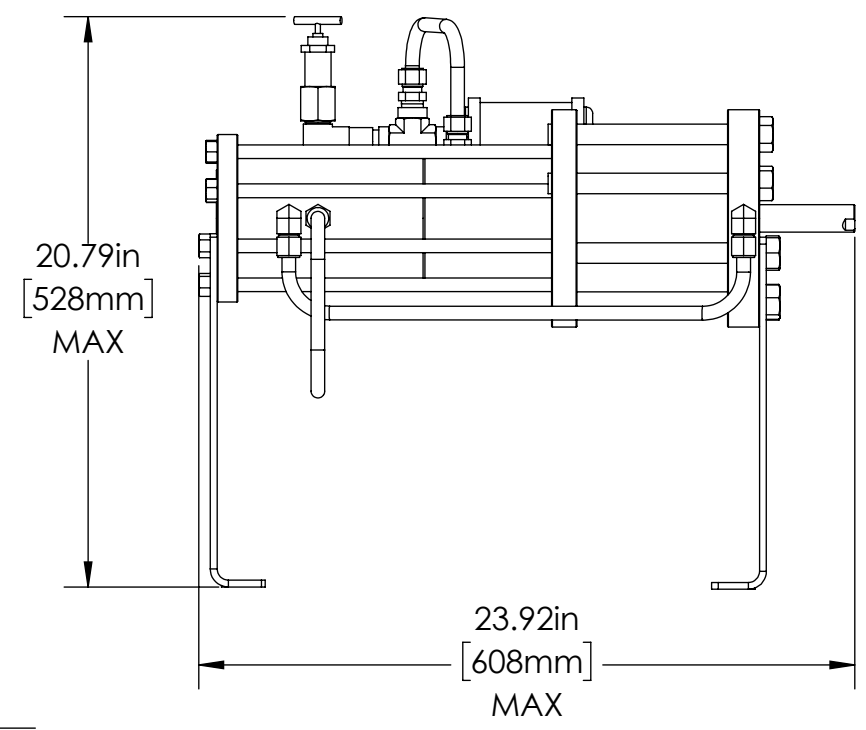
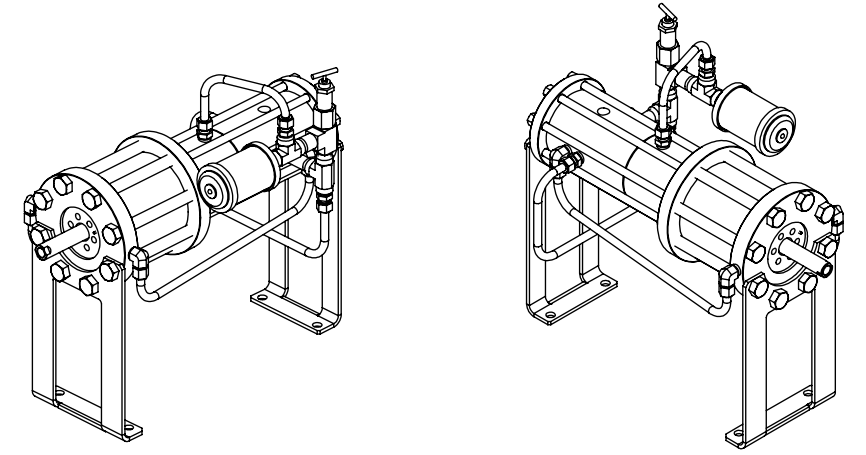
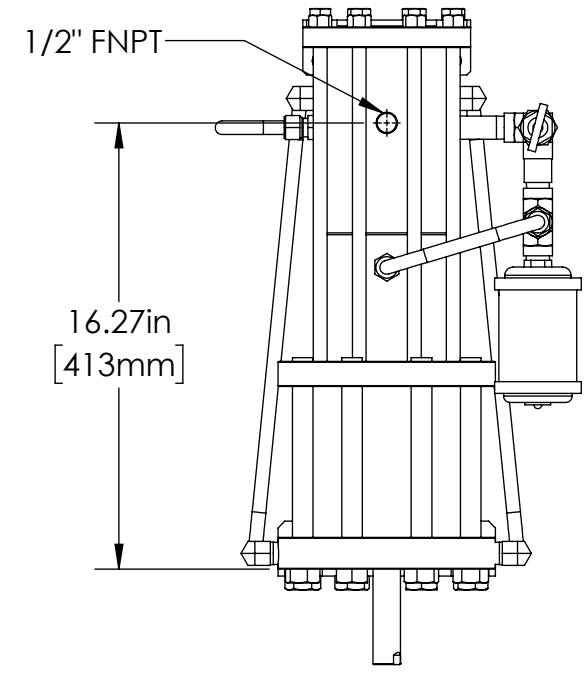


|         |               |
|---------|---------------|
| PART #  | HEAD MATERIAL |
| P54MSA1 | 316SS         |

|             |          |
|-------------|----------|
| DATE        | APPROVED |
| JULY-8-2025 | JF       |



VIEW A-A  
SOME COMPONENTS REMOVED FOR CLARITY



MARKETING DRAWING



|  |                       |
|--|-----------------------|
| <p><b>CheckPoint</b><br/>Pumps &amp; Systems</p> |                       |
| <p>DWG. TITLE<br/><b>MOTOR SUB-ASSY 5400</b></p> |                       |
| <p>REV<br/><b>013</b></p>                        | <p><b>P54MSA1</b></p> |
| <p>DRAWING NUMBER</p>                            |                       |
| <p>SHEET 1 OF 4</p>                              |                       |

|        |                    |
|--------|--------------------|
| WEIGHT | 122.2 lb / 55.4 kg |
|--------|--------------------|

PROPRIETARY AND CONFIDENTIAL  
THE INFORMATION CONTAINED HEREIN IS PROPRIETARY TO CHECKPOINT SYSTEMS AND SHALL NOT BE REPRODUCED OR DISCLOSED IN WHOLE OR IN PART OR USED FOR ANY PUPOSE EXCEPT WHEN SUCH USER POSSESSES DIRECT WRITTEN AUTHORIZATION FROM CHECKPOINT SYSTEMS

8

7

6

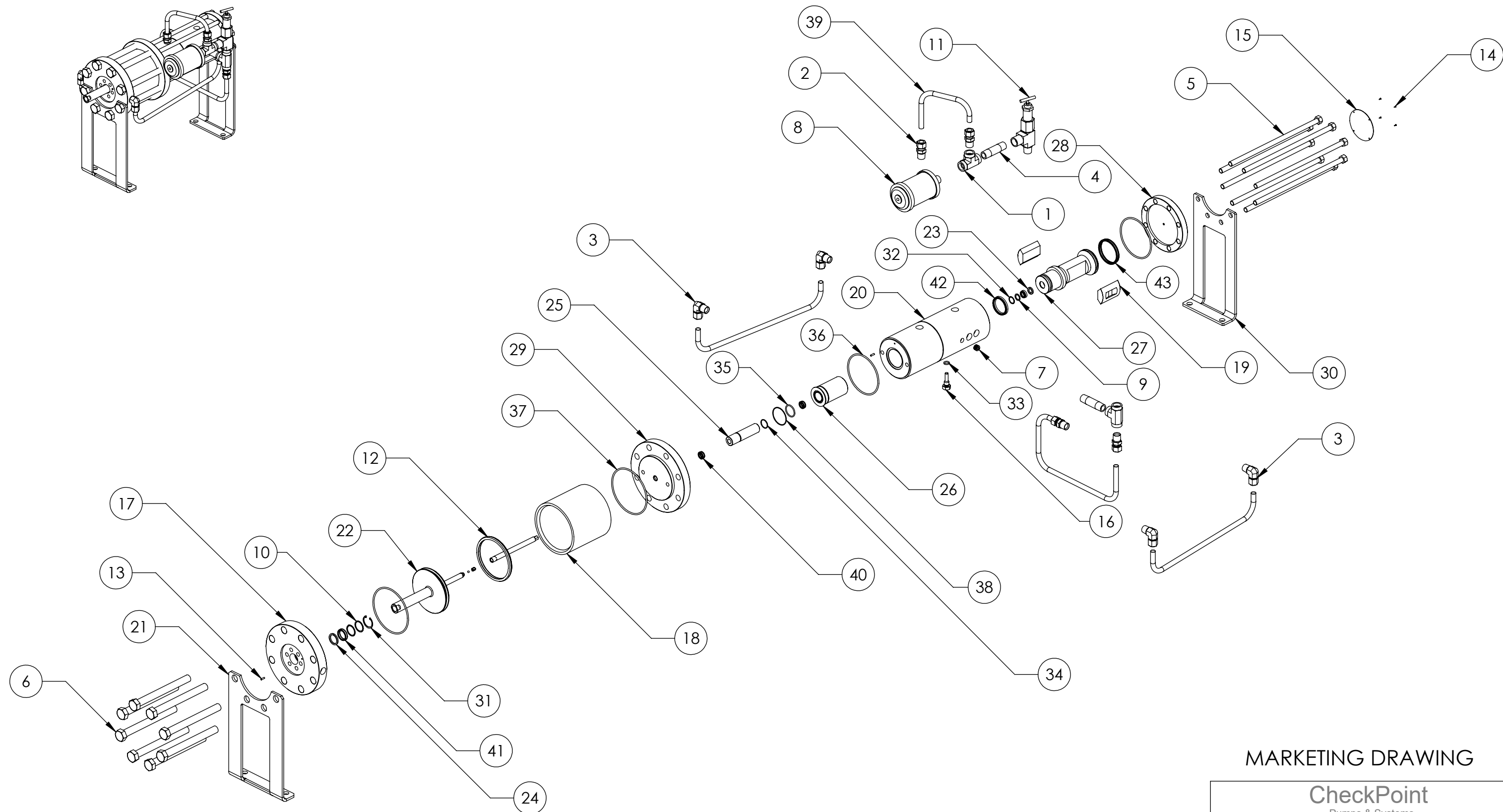
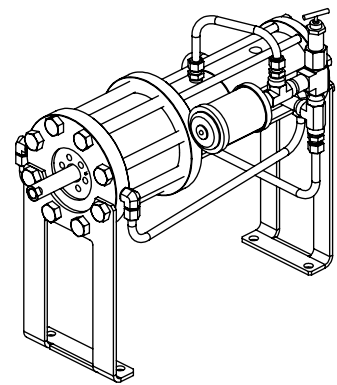
5

4

3

2

1



MARKETING DRAWING

CheckPoint  
Pumps & Systems

|                |     |                     |           |
|----------------|-----|---------------------|-----------|
| DWG. TITLE     |     | MOTOR SUB-ASSY 5400 |           |
| REV            | 013 | P54MSA1             | SIZE<br>B |
| DRAWING NUMBER |     | SHEET 2 OF 4        |           |



PROPRIETARY AND CONFIDENTIAL  
THE INFORMATION CONTAINED HEREIN IS PROPRIETARY TO CHECKPOINT SYSTEMS AND SHALL NOT BE REPRODUCED OR DISCLOSED IN WHOLE OR IN PART OR USED FOR ANY PURPOSE EXCEPT WHEN SUCH USER POSSESSES DIRECT WRITTEN AUTHORIZATION FROM CHECKPOINT SYSTEMS

|        |                    |
|--------|--------------------|
| WEIGHT | 122.2 lb / 55.4 kg |
|--------|--------------------|

8

7

6

5

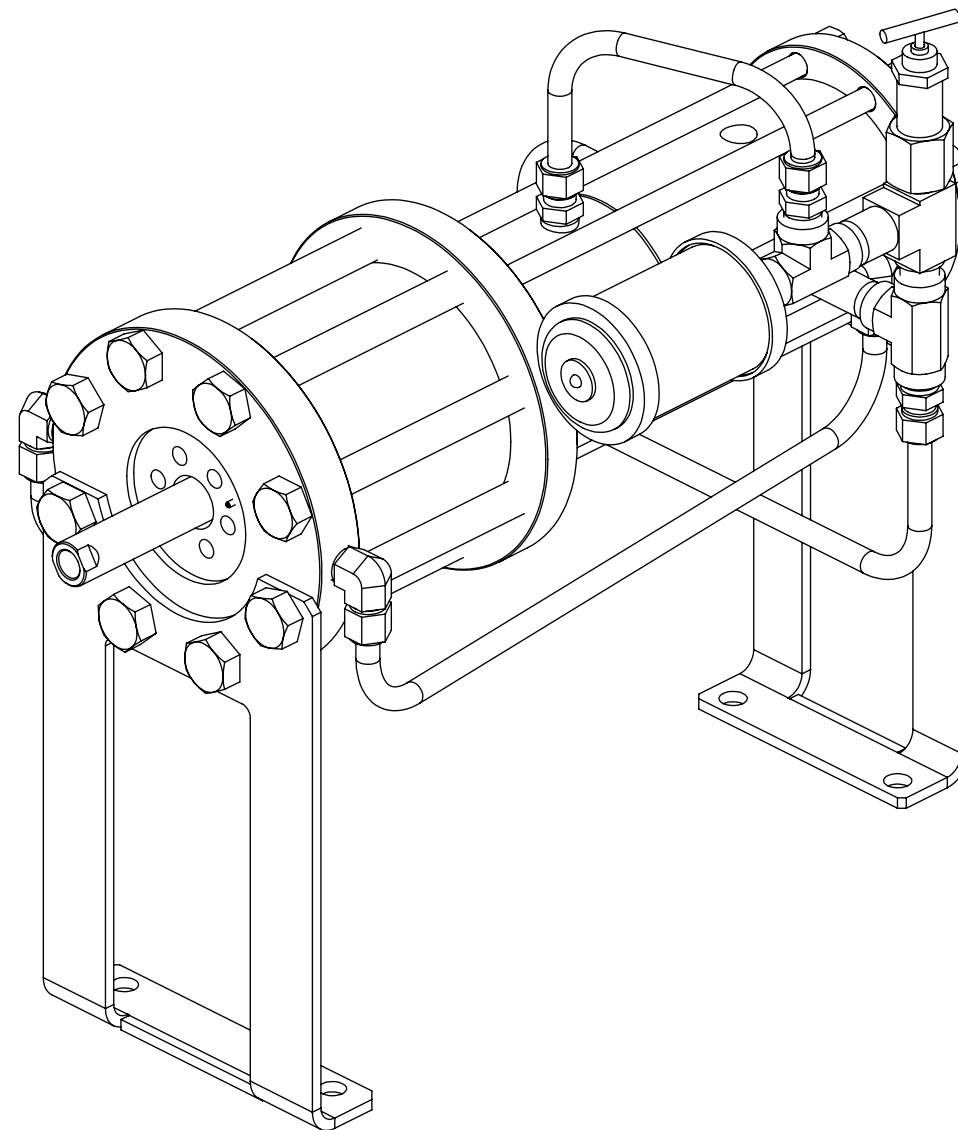
4

3

2

1

| ITEM NO. | PART NUMBER    | DESCRIPTION              | QTY. |
|----------|----------------|--------------------------|------|
| 1        | FT8-8-8FT-SS   | TEE                      | 2    |
| 2        | FT8MSC8N316    | CONNECTOR                | 4    |
| 3        | FT8MSEL8N316   | ELBOW                    | 4    |
| 4        | FT8N48SCH80316 | NIPPLE                   | 2    |
| 5        | HHBS608131290  | BOLT - HOUSING           | 8    |
| 6        | HHBS6112100771 | BOLT - HEAD              | 8    |
| 7        | HHPLUGS6158G   | PLUG                     | 1    |
| 8        | HSILMX05-108   | MUFFLER                  | 1    |
| 9        | HWSHS6108      | WASHER - FLAT            | 1    |
| 10       | HWSHS6116      | WASHER- FLAT             | 2    |
| 11       | NV0500-1       | NEEDLE VALVE             | 1    |
| 12       | OPTPTFE180P    | OPTI-RING                | 1    |
| 13       | P2511          | ALIGNMENT PIN            | 2    |
| 14       | P2551          | U-DRIVE SCREW            | 4    |
| 15       | P5450          | SERIAL NUMBER PLATE      | 1    |
| 16       | PASS6158G      | ALIGNMENT SCREW          | 1    |
| 17       | PBFLGMS6180    | BOTTOM FLANGE            | 1    |
| 18       | PCYLMMS6180    | CYLINDER - MOTOR         | 1    |
| 19       | PDSTC158G      | D-SLIDE                  | 2    |
| 20       | PHOS6158G      | HOUSING                  | 1    |
| 21       | PLLS625G       | LEG - LOWER              | 1    |
| 22       | PPRLS6251SU    | PISTON SUB ASSEMBLY      | 1    |
| 23       | PRBDL108       | ROD BUSHING              | 1    |
| 24       | PRBDL116       | ROD BUSHING              | 1    |
| 25       | PSLDL158G      | SPACER SLEEVE            | 1    |
| 26       | PSLVS6158G     | SLEEVE                   | 1    |
| 27       | PSPDL158       | SPOOL                    | 1    |
| 28       | PTCOVS6158G    | FLANGE                   | 1    |
| 29       | PTFLGMS6180    | TOP FLANGE               | 1    |
| 30       | PULS6258G      | UPPER LEG                | 1    |
| 31       | RRBS6220       | SNAP RING                | 1    |
| 32       | RRSS6212       | SNAP RING                | 1    |
| 33       | SELORHN-0703   | O RING                   | 1    |
| 34       | SELORHN-1402   | O-RING                   | 1    |
| 35       | SELORHN-1903   | O-RING                   | 1    |
| 36       | SELORHN-7004   | O-RING                   | 2    |
| 37       | SELORHN-8004   | O-RING                   | 2    |
| 38       | SELORHN3002    | O-RING                   | 1    |
| 39       | ST35S608S      | 1/2" x 0.035" 316SS TUBE | 4    |
| 40       | UCSUR1120804   | U-CUP SEAL               | 3    |
| 41       | UCSUR1201604   | U-CUP SEAL               | 1    |
| 42       | UCSUR1322804   | U-CUP SEAL               | 1    |
| 43       | UCSUR1444004   | U-CUP SEAL               | 1    |



MARKETING DRAWING

CheckPoint  
Pumps & Systems

DWG. TITLE  
MOTOR SUB-ASSY 5400

|     |     |         |                  |
|-----|-----|---------|------------------|
| REV | 013 | P54MSA1 | SIZE<br><b>B</b> |
|-----|-----|---------|------------------|



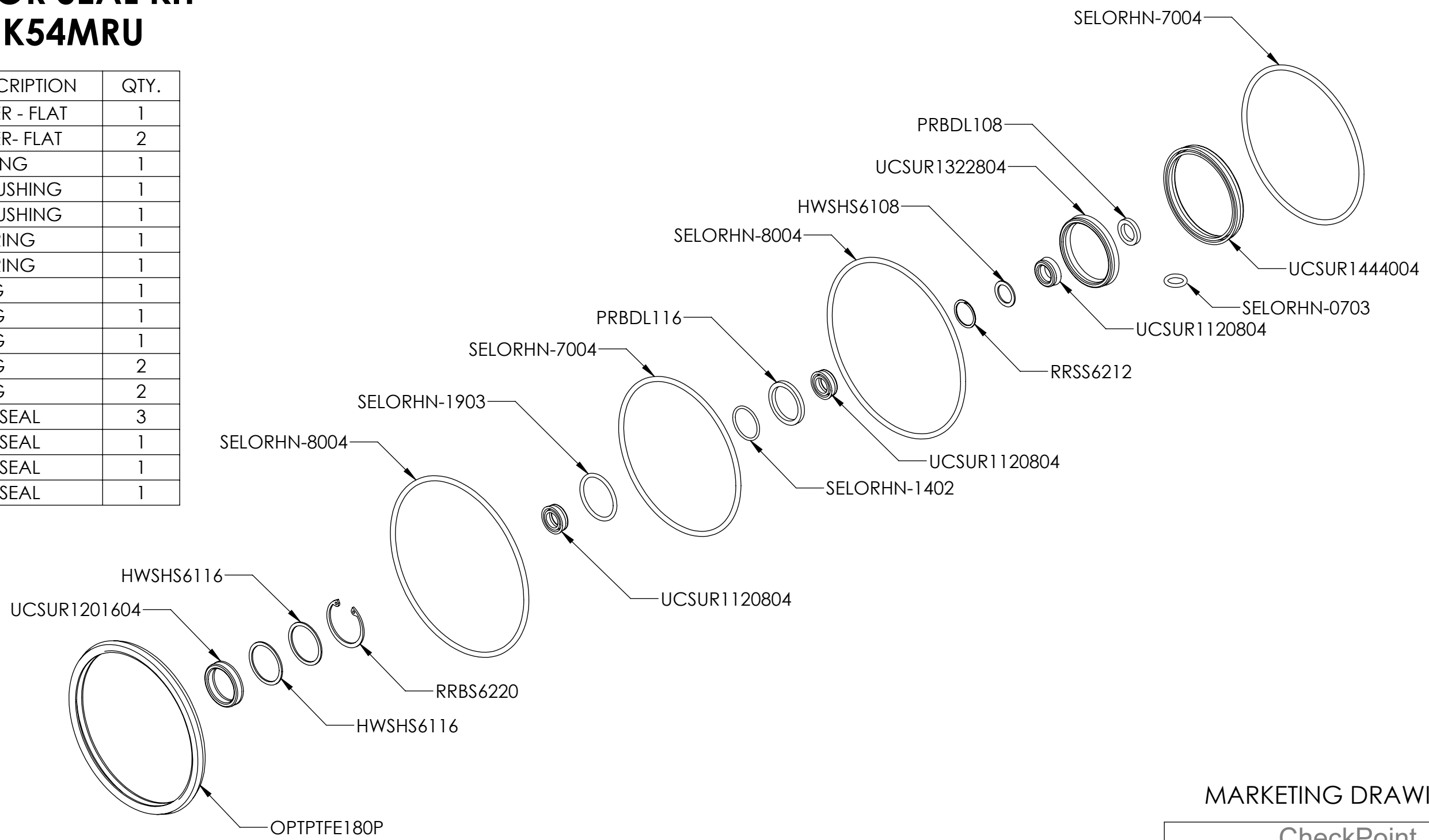
PROPRIETARY AND CONFIDENTIAL  
THE INFORMATION CONTAINED HEREIN IS PROPRIETARY TO CHECKPOINT SYSTEMS AND SHALL NOT BE REPRODUCED OR DISCLOSED IN WHOLE OR IN PART OR USED FOR ANY PURPOSE EXCEPT WHEN SUCH USER POSSESSES DIRECT WRITTEN AUTHORIZATION FROM CHECKPOINT SYSTEMS

WEIGHT 122.2 lb / 55.4 kg

DRAWING NUMBER SHEET 3 OF 4

# 5400 MOTOR SEAL KIT PART # K54MRU

| PART NO.     | DESCRIPTION   | QTY. |
|--------------|---------------|------|
| HWSHS6108    | WASHER - FLAT | 1    |
| HWSHS6116    | WASHER- FLAT  | 2    |
| OPTPTFE180P  | OPTI-RING     | 1    |
| PRBDL108     | ROD BUSHING   | 1    |
| PRBDL116     | ROD BUSHING   | 1    |
| RRBS6220     | SNAP RING     | 1    |
| RRSS6212     | SNAP RING     | 1    |
| SELORHN-0703 | O RING        | 1    |
| SELORHN-1402 | O-RING        | 1    |
| SELORHN-1903 | O-RING        | 1    |
| SELORHN-7004 | O-RING        | 2    |
| SELORHN-8004 | O-RING        | 2    |
| UCSUR1120804 | U-CUP SEAL    | 3    |
| UCSUR1201604 | U-CUP SEAL    | 1    |
| UCSUR1322804 | U-CUP SEAL    | 1    |
| UCSUR1444004 | U-CUP SEAL    | 1    |



WEIGHT 122.2 lb / 55.4 kg

PROPRIETARY AND CONFIDENTIAL  
THE INFORMATION CONTAINED HEREIN IS PROPRIETARY TO CHECKPOINT SYSTEMS AND SHALL NOT BE REPRODUCED OR DISCLOSED IN WHOLE OR IN PART OR USED FOR ANY PURPOSE EXCEPT WHEN SUCH USER POSSESSES DIRECT WRITTEN AUTHORIZATION FROM CHECKPOINT SYSTEMS



**MARKETING DRAWING**

**CheckPoint**  
Pumps & Systems

DWG. TITLE  
**MOTOR SUB-ASSY 5400**

|                   |                |                  |
|-------------------|----------------|------------------|
| REV<br><b>013</b> | <b>P54MSA1</b> | SIZE<br><b>B</b> |
| DRAWING NUMBER    |                | SHEET 4 OF 4     |