

**PUMP CUTAWAYS AND DRAWINGS**

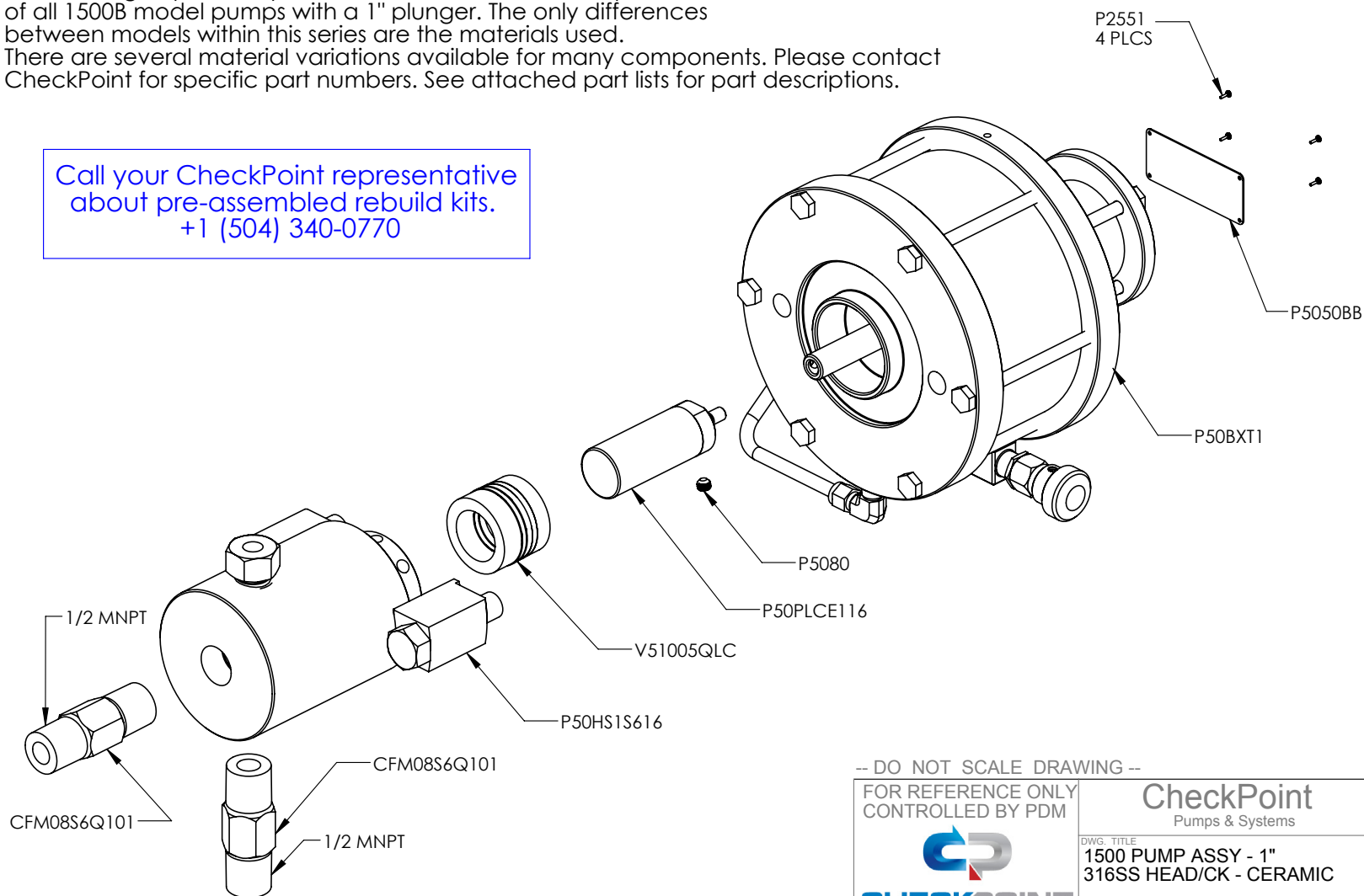
On the following pages are external and internal pump drawings with part numbers and material codes.  
The following table identifies each material code.

MATERIAL CODES	
303 Stainless Steel	S3
304 Stainless Steel	S4
316 Stainless Steel	S6
17-4 PH Stainless Steel - HH 1150	S7
420 Stainless Steel	S0
6061 Aluminum	A6
Acetal	AC
Aflas®	AF
Buna-N®	BU
Ceramic - EverWear™	CE
Ceramic - NBD200™	CN
Delrin®	DL
Duplex 2205	D4
Super Duplex 2507	D5
Elgiloy®	EL
FKM	PF
FFKM	FK
Hastelloy® C276	HC
HNBR	HN
Iron	FE
Low carbon steel	ST
Monel®	MO
PVC	PV
PEEK	PK
Teflon® - Bronze Filled	TB
Teflon® - Carbon Filled	TC
Teflon® - Glass Filled	TG
Teflon® - Mica Filled	TM
Teflon® - Polyimide Filled	TP
Teflon® - Virgin	TF
Titanium	TI
Ultra High Molecular Weight Polyethylene (UHMWPE)	UH
Urethane	UR
Viton®	VI
XWL	XL

**NOTE:**

This drawing is specifically for P50B116C3QLC34, but is representative of all 1500B model pumps with a 1" plunger. The only differences between models within this series are the materials used. There are several material variations available for many components. Please contact CheckPoint for specific part numbers. See attached part lists for part descriptions.

Call your CheckPoint representative  
about pre-assembled rebuild kits.  
+1 (504) 340-0770



PROPRIETARY AND CONFIDENTIAL

THE INFORMATION CONTAINED HEREIN IS PROPRIETARY TO CHECKPOINT SYSTEMS AND SHALL NOT BE REPRODUCED OR DISCLOSED IN WHOLE OR IN PART OR USED FOR ANY PURPOSE EXCEPT WHEN SUCH USER POSSESSES DIRECT WRITTEN AUTHORIZATION FROM CHECKPOINT SYSTEMS

-- DO NOT SCALE DRAWING --

FOR REFERENCE ONLY  
CONTROLLED BY PDM



**CheckPoint**  
Pumps & Systems

DWG. TITLE  
**1500 PUMP ASSY - 1"**  
**316SS HEAD/CK - CERAMIC**

**P50B116C3QLC34**

SIZE  
**A**

DRAWING NUMBER

## Series 1500 Pneumatic Chemical Injection Pump 1" Plunger - Part Number P50B116C3QLC34

PART NUMBER	Description	QTY.	MATERIAL CODES	TEMPERATURE (°C) MIN/MAX
CFM08S6Q101	Check Valve	2	S6/PF	-29/204
P50BXT1	1500 Motor	1	S6/TCUR/HN/DL	-268/288, -40/100, -29/160, -50/90
P50HS1S616	1500 Head Sub-Assy	1	S6/HC/CN	NA
P2551	1250-1500 SERIAL PLATE U-DRIVE	4	S6	NA
P5050BB	1500 Serial Number Plate	1	S6	NA
V51005QLC	Packing	1	FK/TM/PK	-29/204, -268/288, -73/288
P50PLCE116	1" Plunger - Ceramic	1	CE	NA
P5080	Set Screw	1	S6	NA

Call your CheckPoint representative about pre-assembled rebuild kits.  
+1 (504) 340-0770

[Plunger Kit - K50PLRCU16](#)

[Check Valve Rebuild Kit - KFM08S6Q101](#)

[Motor Rebuild - K50MRU](#)

[Spool Kit - K25SPT16](#)

[Complete Rebuild - KS150116CQ34](#)

- Includes Motor Rebuild Kit
- Check Valve Rebuild Kit
- Packing
- Spool Kit
- D-Slides

PROPRIETARY AND CONFIDENTIAL

THE INFORMATION CONTAINED HEREIN IS PROPRIETARY TO CHECKPOINT SYSTEMS AND SHALL NOT BE REPRODUCED OR DISCLOSED IN WHOLE OR IN PART OR USED FOR ANY PURPOSE EXCEPT WHEN SUCH USER POSSESSES DIRECT WRITTEN AUTHORIZATION FROM CHECKPOINT SYSTEMS

-- DO NOT SCALE DRAWING --

FOR REFERENCE ONLY  
CONTROLLED BY PDM



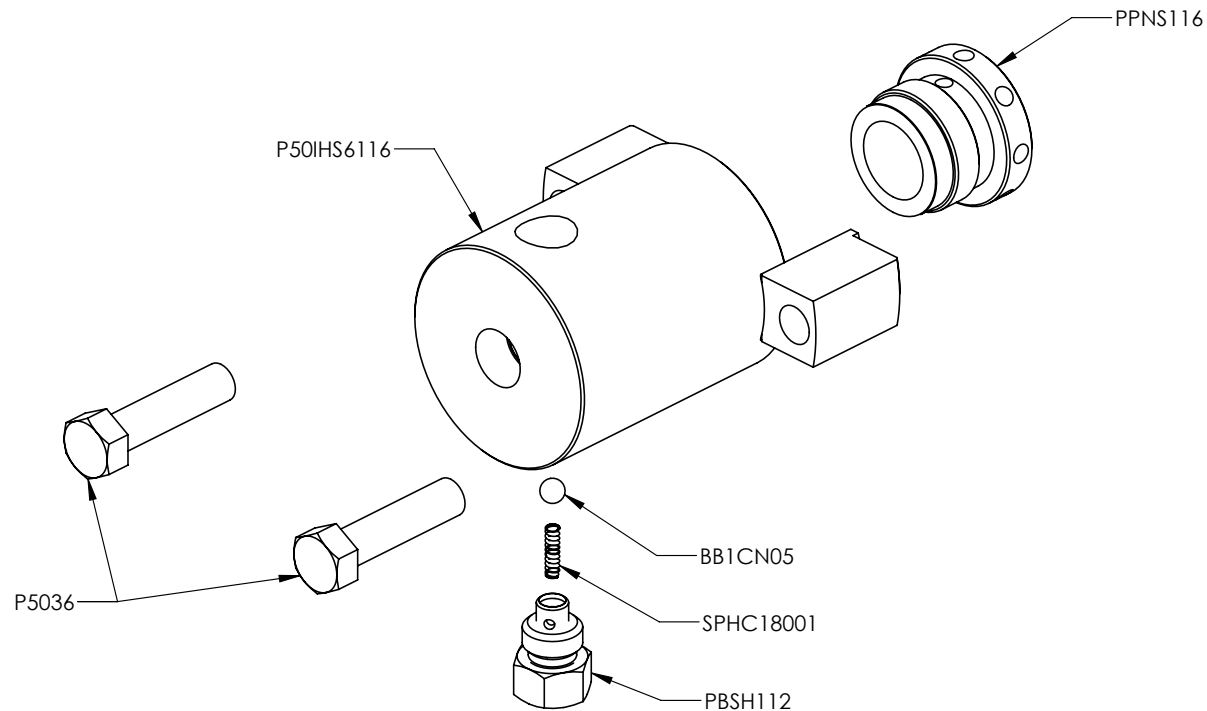
**CheckPoint**  
Pumps & Systems

DWG. TITLE  
**1500 PUMP ASSY - 1"  
316SS HEAD/CK - CERAMIC**

**P50B116C3QLC34**

SIZE  
**A**

DRAWING NUMBER



-- DO NOT SCALE DRAWING --

FOR REFERENCE ONLY  
CONTROLLED BY PDM



CheckPoint  
Pumps & Systems

DWG. TITLE  
1500 Head Sub-Assy - 1"  
316 SS - No Seals or Checks

P50HS1S616

SIZE  
A

DRAWING NUMBER

PROPRIETARY AND CONFIDENTIAL

THE INFORMATION CONTAINED HEREIN IS PROPRIETARY TO CHECKPOINT SYSTEMS AND SHALL NOT BE REPRODUCED OR DISCLOSED IN WHOLE OR IN PART OR USED FOR ANY PURPOSE EXCEPT WHEN SUCH USER POSSESSES DIRECT WRITTEN AUTHORIZATION FROM CHECKPOINT SYSTEMS

**Series 1500 Pneumatic Chemical Injection Pump  
1" Plunger - Part Number P50B116C3QLC34**

PART NUMBER	DESCRIPTION	QTY.	MATERIAL CODES	TEMPERATURE (°C) MIN/MAX
BB1CN05	BALL - BLEED	1	CN	NA
P50IHS6116	INJECTION HEAD	1	S6	NA
P5036	BOLT - HOUSING	2	S6	NA
PBSH112	BLEED SCREW	1	HC	NA
PPNS116	PACKING NUT	1	S6	NA
SPHC18001	SPRING	1	HC	NA

PROPRIETARY AND CONFIDENTIAL

THE INFORMATION CONTAINED HEREIN IS PROPRIETARY TO CHECKPOINT SYSTEMS AND SHALL NOT BE REPRODUCED OR DISCLOSED IN WHOLE OR IN PART OR USED FOR ANY PURPOSE EXCEPT WHEN SUCH USER POSSESSES DIRECT WRITTEN AUTHORIZATION FROM CHECKPOINT SYSTEMS

-- DO NOT SCALE DRAWING --

FOR REFERENCE ONLY  
CONTROLLED BY PDM



**CheckPoint**  
Pumps & Systems

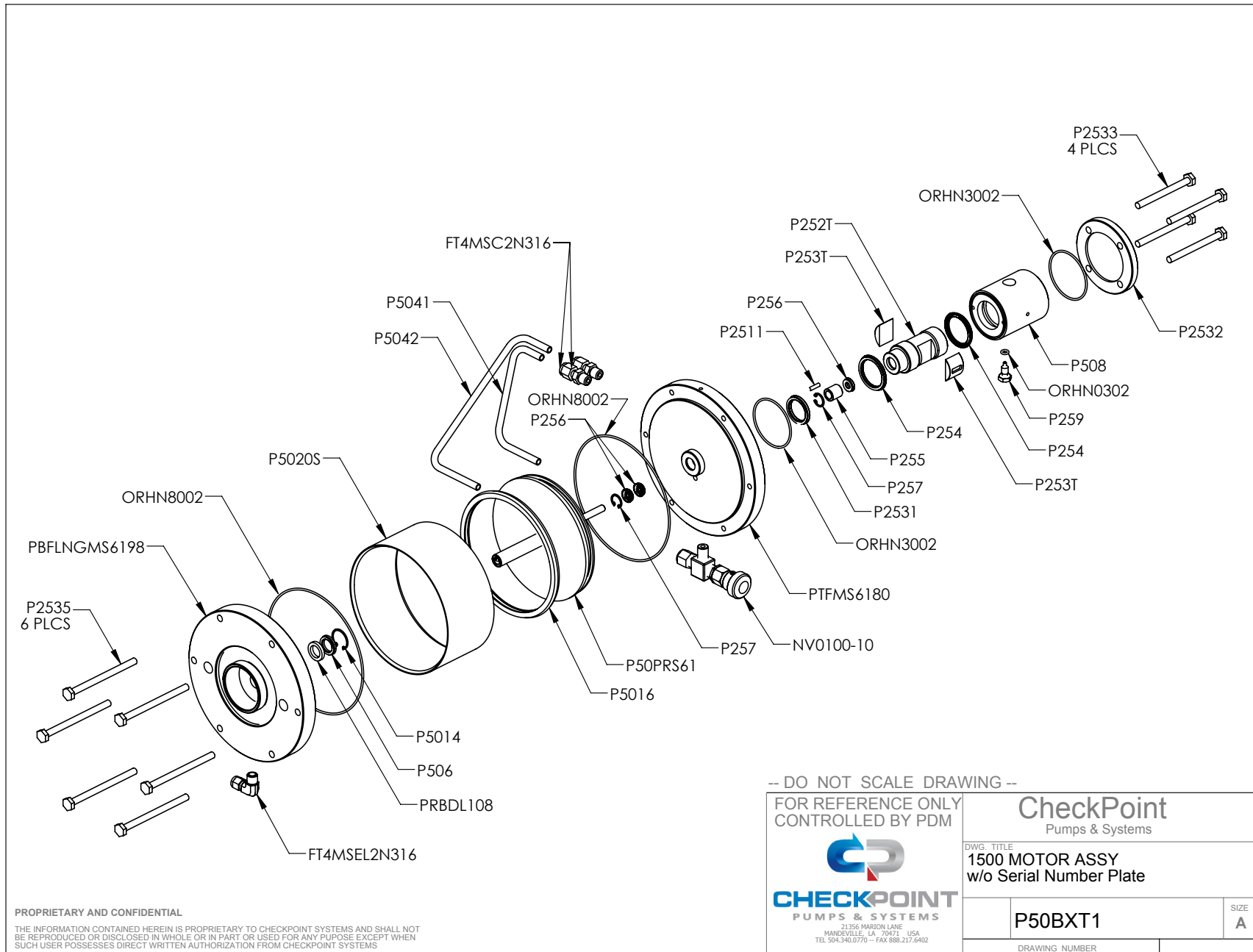
DWG. TITLE

**1500 Head Sub-Assy - 1"  
316 SS - No Seals or Checks**

**P50HS1S616**

SIZE  
**A**

DRAWING NUMBER



PROPRIETARY AND CONFIDENTIAL

THE INFORMATION CONTAINED HEREIN IS PROPRIETARY TO CHECKPOINT SYSTEMS AND SHALL NOT BE REPRODUCED OR DISCLOSED IN WHOLE OR IN PART OR USED FOR ANY PURPOSE EXCEPT WHEN SUCH USER POSSESSES DIRECT WRITTEN AUTHORIZATION FROM CHECKPOINT SYSTEMS

-- DO NOT SCALE DRAWING --

FOR REFERENCE ONLY  
CONTROLLED BY PDM



CheckPoint  
Pumps & Systems

DWG. TITLE  
1500 MOTOR ASSY  
w/o Serial Number Plate

P50BXT1

DRAWING NUMBER

SIZE  
A

## Series 1500 Pneumatic Chemical Injection Pump 1" Plunger - Part Number P50B116C3QLC34

PART NUMBER	DESCRIPTION	QTY.	MATERIAL CODE	Temperature (°C) Min/Max
FT4MSC2N316	MNPT CONNECTOR	2	S6	NA
NV0100-10	ASSY-NEEDLE VALVE	1	S6/PF	-29/204
P50PRS61	PISTON ASSY	1	S6	NA
FT4MSEL2N316	MNPT ELBOW	1	S6	NA
PTFMS6180	TOP FLANGE - MOTOR	1	S6	NA
P259	ALIGNMENT SCREW	1	S6	NA
P508	HOUSING	1	S6	NA
P253T	D-SLIDE	2	TC	-268/288
P2511	ALIGNMENT PIN	1	S0	NA
P2532	TOP COVER	1	S6	NA
P2533	BOLT - HOUSING	4	S6	NA
P2535	BOLT - CYLINDER	6	S6	NA
P5020S	CYLINDER - MOTOR	1	S6	NA
P5041	TOP TUBE	1	S6	NA
P5042	BOTTOM TUBE	1	S6	NA
PBFLGMS6198	BOTTOM FLANGE - MOTOR	1	S6	NA
P252T	<b>K25SPT16</b> <b>K50MRU</b>	1	TC	-268/288
P255		1	TC	-268/288
P256		3	UR	-40/100
P257		2	S6	NA
ORHN0302	O-RING ALIGNMENT SCREW	1	HN	-29/160
ORHN3002	O-RING HOUSING	2	HN	-29/160
ORHN8002	O-RING - CYLINDER	2	HN	-29/160
P2531	SEAL - TOP FLANGE	1	UR	-40/100
P254	SEAL - SPOOL	2	UR	-40/100
PRBDL108	ROD BUSHING	1	DL	-50 TO +90
P506	SEAL - MOTOR	1	UR	-40/100
P5014	SNAP RING	1	S6	NA
P5016	Crown Seal - Piston	1	UR	-40/100

Call your CheckPoint representative about pre-assembled rebuild kits. +1 (504) 340-0770  
**Motor Rebuild Kit** - K50MRU - Contains all seals in the motor (air) end of the 1500 series pump.  
**Spool Kit** - K25SPT16

-- DO NOT SCALE DRAWING --

FOR REFERENCE ONLY  
CONTROLLED BY PDM



**CheckPoint**  
Pumps & Systems

DWG. TITLE  
**1500 MOTOR ASSY**  
w/o Serial Number Plate

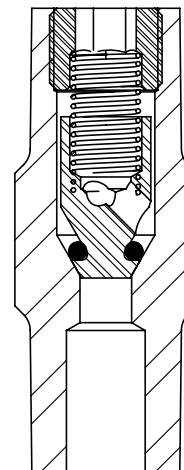
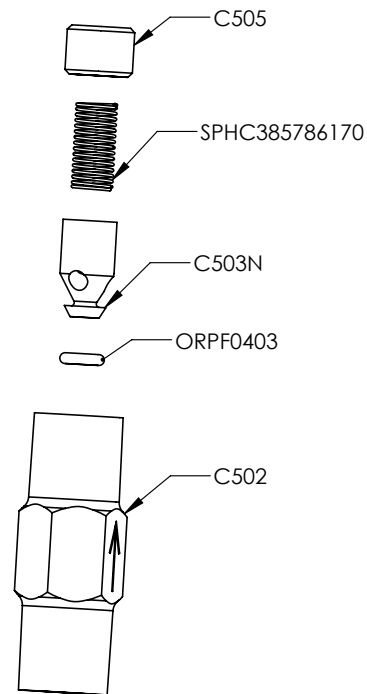
**P50BXT1**

DRAWING NUMBER

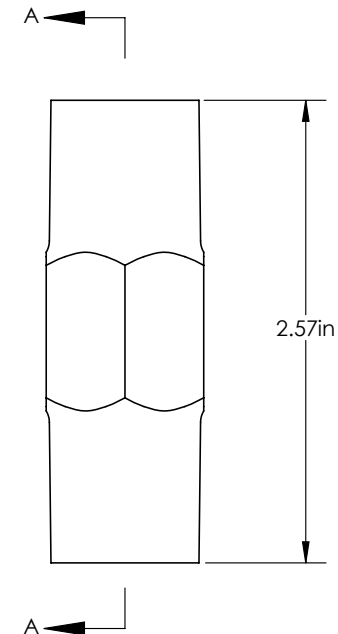
SIZE  
**A**

PROPRIETARY AND CONFIDENTIAL

THE INFORMATION CONTAINED HEREIN IS PROPRIETARY TO CHECKPOINT SYSTEMS AND SHALL NOT BE REPRODUCED OR DISCLOSED IN WHOLE OR IN PART OR USED FOR ANY PURPOSE EXCEPT WHEN SUCH USER POSSESSES DIRECT WRITTEN AUTHORIZATION FROM CHECKPOINT SYSTEMS



SECTION A-A



Call your CheckPoint representative about pre-assembled rebuild kits.  
+1 (504) 340-0770  
Check Valve Rebuild Kit - KFM08S6Q101

PROPRIETARY AND CONFIDENTIAL

THE INFORMATION CONTAINED HEREIN IS PROPRIETARY TO CHECKPOINT SYSTEMS AND SHALL NOT BE REPRODUCED OR DISCLOSED IN WHOLE OR IN PART OR USED FOR ANY PURPOSE EXCEPT WHEN SUCH USER POSSESSES DIRECT WRITTEN AUTHORIZATION FROM CHECKPOINT SYSTEMS

-- DO NOT SCALE DRAWING --

FOR REFERENCE ONLY  
CONTROLLED BY PDM



**CheckPoint**  
Pumps & Systems

DWG. TITLE  
**ASSEMBLY - 1/2"  
FAILSAFE - CHECK**

**CFM08S6Q101**

DRAWING NUMBER

SIZE  
**A**

**Series 1500 Pneumatic Chemical Injection Pump  
1" Plunger - Part Number P50B116C3QLC34**

PART NUMBER	DESCRIPTION	QTY.	MATERIAL CODES	TEMPERATURE (°C) MIN/MAX
C502	1/2" FAILSAFE CHECK VALVE	1	S6	NA
C503N	POPPET CHECK	1	XL	NA
ORFK0403	O-Ring Poppet Check - KFM	1	FK	-29/204
SPHC385786170	SPRING	1	HC	NA
C505	CHECK RETAINER	1	S6	NA

**KFM08S6Q101**

Call your CheckPoint representative about pre-assembled rebuild kits.  
+1 (504) 340-0770  
Check Valve Rebuild Kit - KFM08S6Q101

-- DO NOT SCALE DRAWING --

FOR REFERENCE ONLY  
CONTROLLED BY PDM



**CheckPoint**  
Pumps & Systems

DWG. TITLE  
**ASSEMBLY - 1/2"  
FAILSAFE - CHECK**

**CFM08S6Q101**

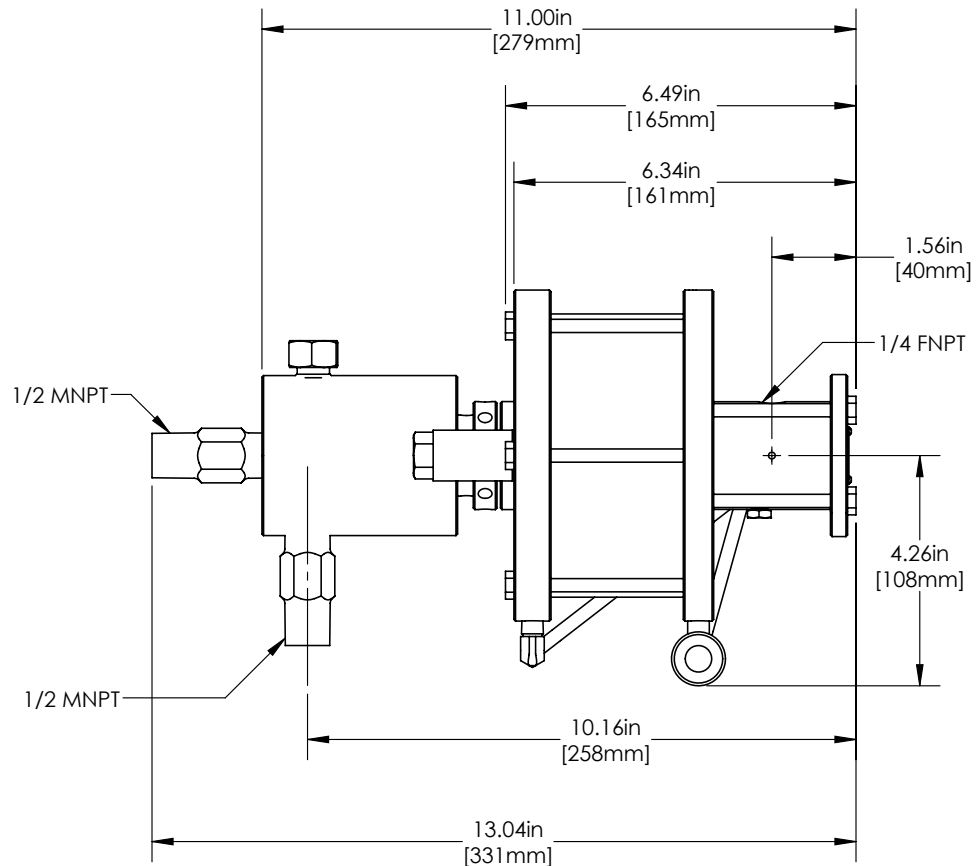
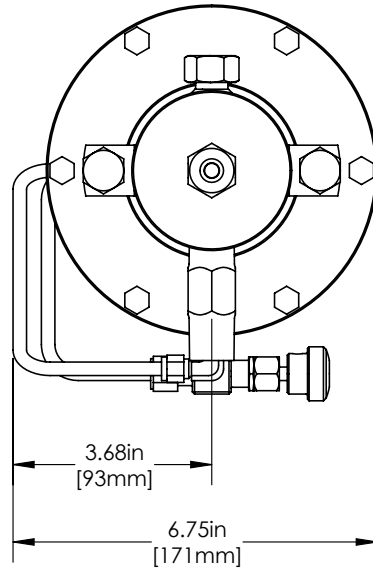
SIZE  
**A**

DRAWING NUMBER

PROPRIETARY AND CONFIDENTIAL

THE INFORMATION CONTAINED HEREIN IS PROPRIETARY TO CHECKPOINT SYSTEMS AND SHALL NOT BE REPRODUCED OR DISCLOSED IN WHOLE OR IN PART OR USED FOR ANY PURPOSE EXCEPT WHEN SUCH USER POSSESSES DIRECT WRITTEN AUTHORIZATION FROM CHECKPOINT SYSTEMS

# Series 1500 Pneumatic Chemical Injection Pump 1" Plunger - Part Number P50B116C3QLC34



-- DO NOT SCALE DRAWING --

FOR REFERENCE ONLY  
CONTROLLED BY PDM



**CheckPoint**  
Pumps & Systems

DWG. TITLE  
1500 PUMP ASSY - 1"  
316SS HEAD/CK - CERAMIC

P50B116C3QLC34

SIZE  
A

DRAWING NUMBER

PROPRIETARY AND CONFIDENTIAL

THE INFORMATION CONTAINED HEREIN IS PROPRIETARY TO CHECKPOINT SYSTEMS AND SHALL NOT BE REPRODUCED OR DISCLOSED IN WHOLE OR IN PART OR USED FOR ANY PURPOSE EXCEPT WHEN SUCH USER POSSESSES DIRECT WRITTEN AUTHORIZATION FROM CHECKPOINT SYSTEMS