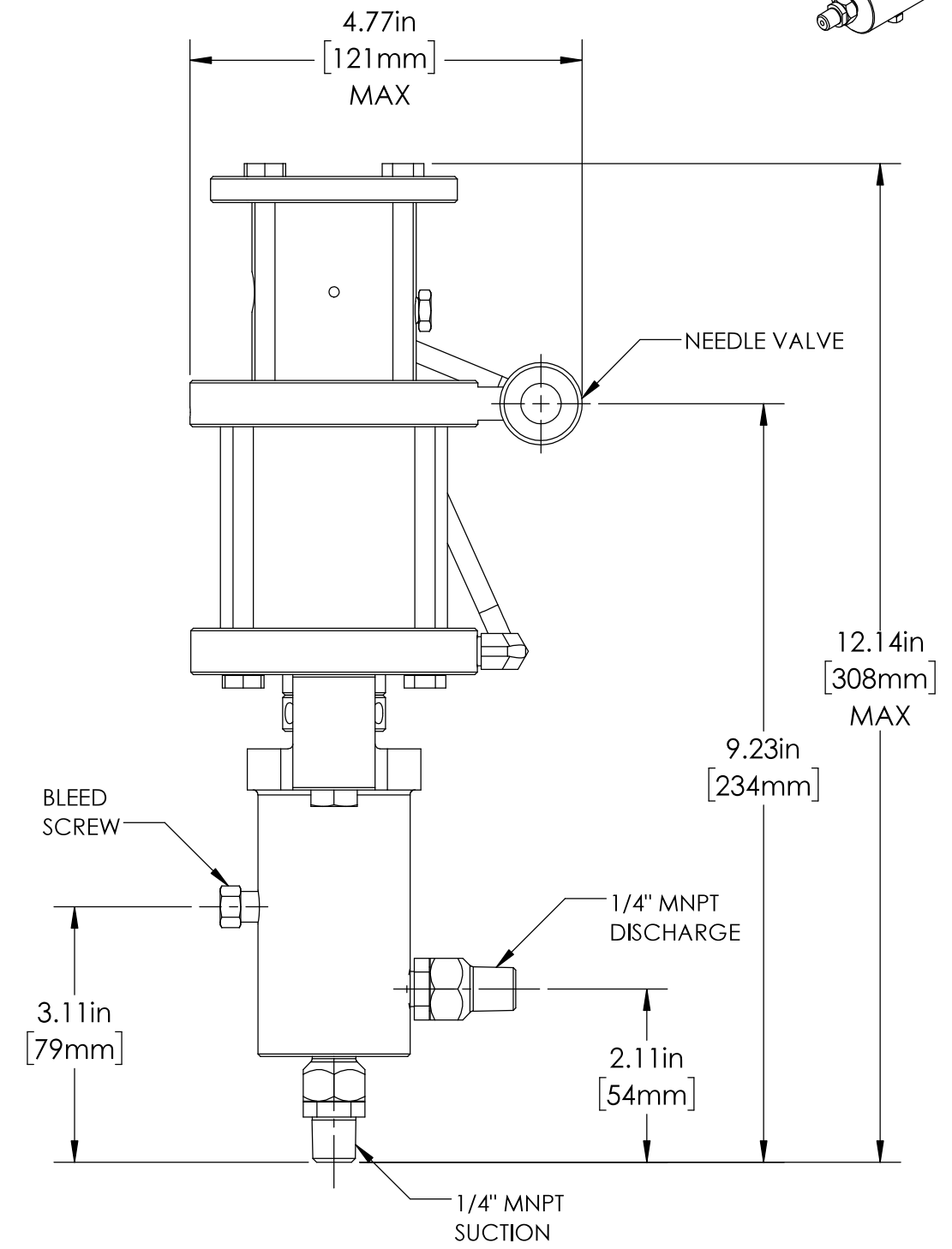
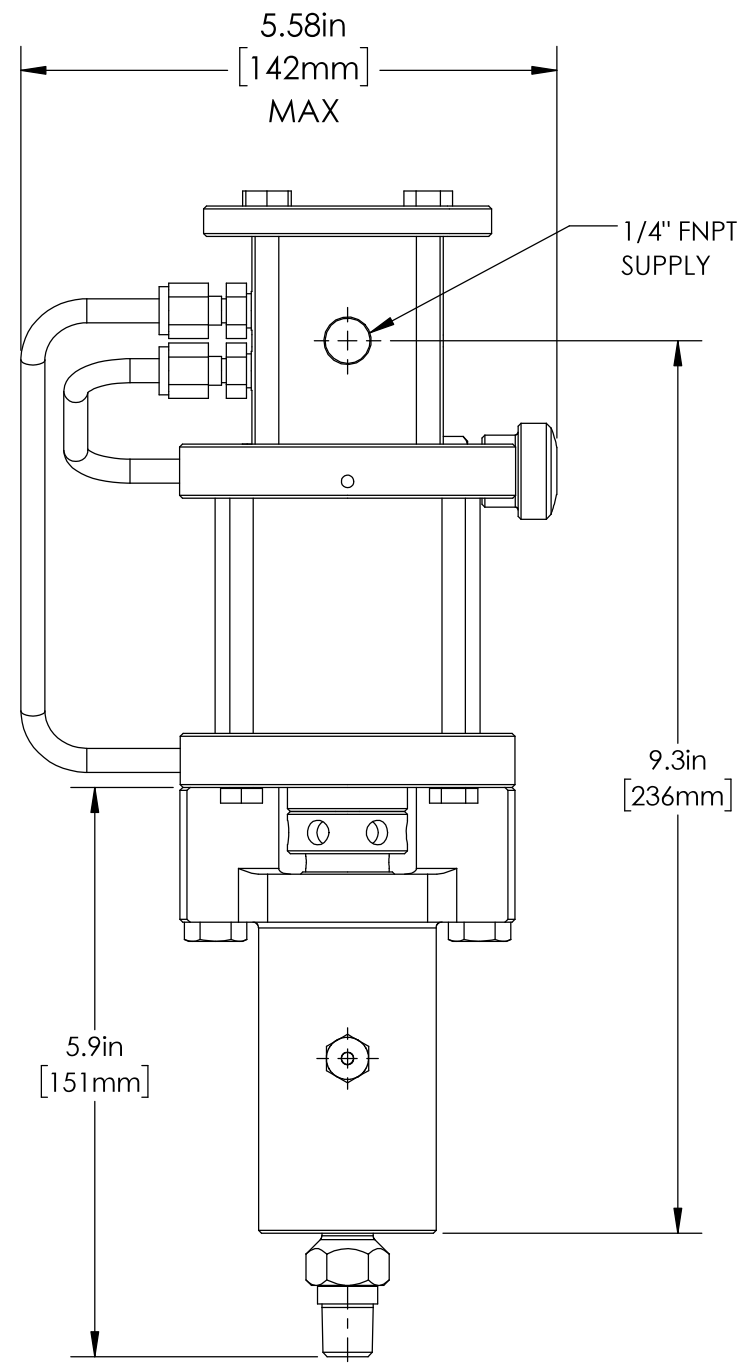
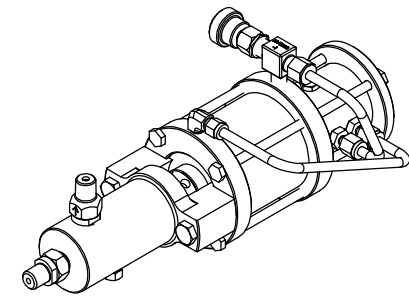


8 7 6 5 4 3 2 1

DATE	APPROVED
DEC-05-24	WRS



MARKETING DRAWING

CheckPoint
Pumps & Systems

DWG. TITLE
**1/8" DEDICATED
1250-B PUMP ASSEMBLY**

REV
002 P25B11C3DQ34

SIZE
B



PROPRIETARY AND CONFIDENTIAL
THE INFORMATION CONTAINED HEREIN IS PROPRIETARY TO CHECKPOINT SYSTEMS AND SHALL NOT BE REPRODUCED OR DISCLOSED IN WHOLE OR IN PART OR USED FOR ANY PURPOSE EXCEPT WHEN SUCH USER POSSESSES DIRECT WRITTEN AUTHORIZATION FROM CHECKPOINT SYSTEMS

WEIGHT 11.07 lb / 5.03 kg

DRAWING NUMBER SHEET 1 OF 2

8 7 6 5 4 3 2 1

P25B11C3DQ34 - CERAMIC - FKM

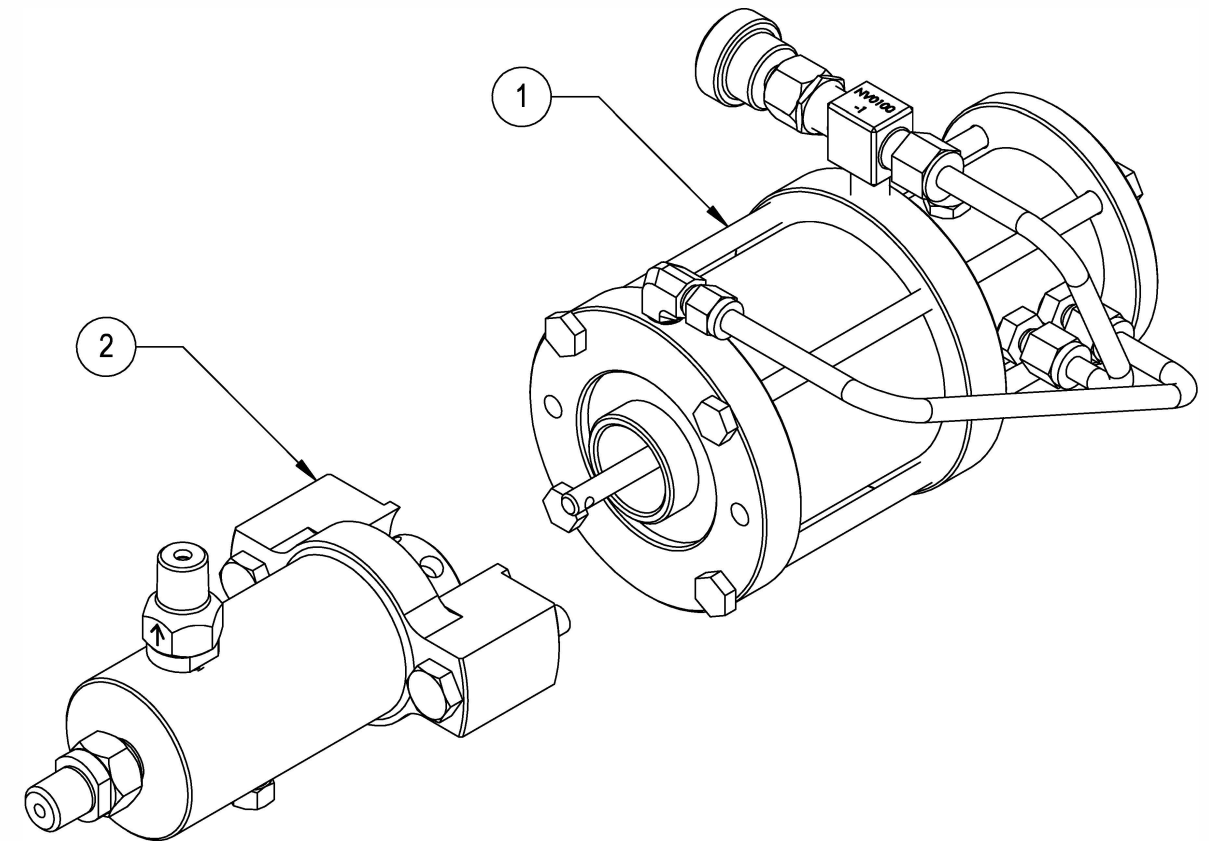
ITEM NO.	PART NUMBER	DESCRIPTION	QTY.
1	P25BXT1U	1250 MOTOR	1
2	W25D302CAQPN3Q6	WET END	1

P25B11C3DH35 - CERAMIC - HNBR

ITEM NO.	PART NUMBER	DESCRIPTION	QTY.
1	P25BXT1U	1250 MOTOR	1
2	W25D302CAHPN3H6	WET END	1

P25B11C3DF38 - CERAMIC - FFKM

ITEM NO.	PART NUMBER	DESCRIPTION	QTY.
1	P25BXT1U	1250 MOTOR	1
2	W25D302CAFPN3F6	WET END	1



NOTE: SERIAL NUMBER PLATE / ATTACH SCREWS NOT SHOWN

MARKETING DRAWING

CheckPoint
Pumps & Systems

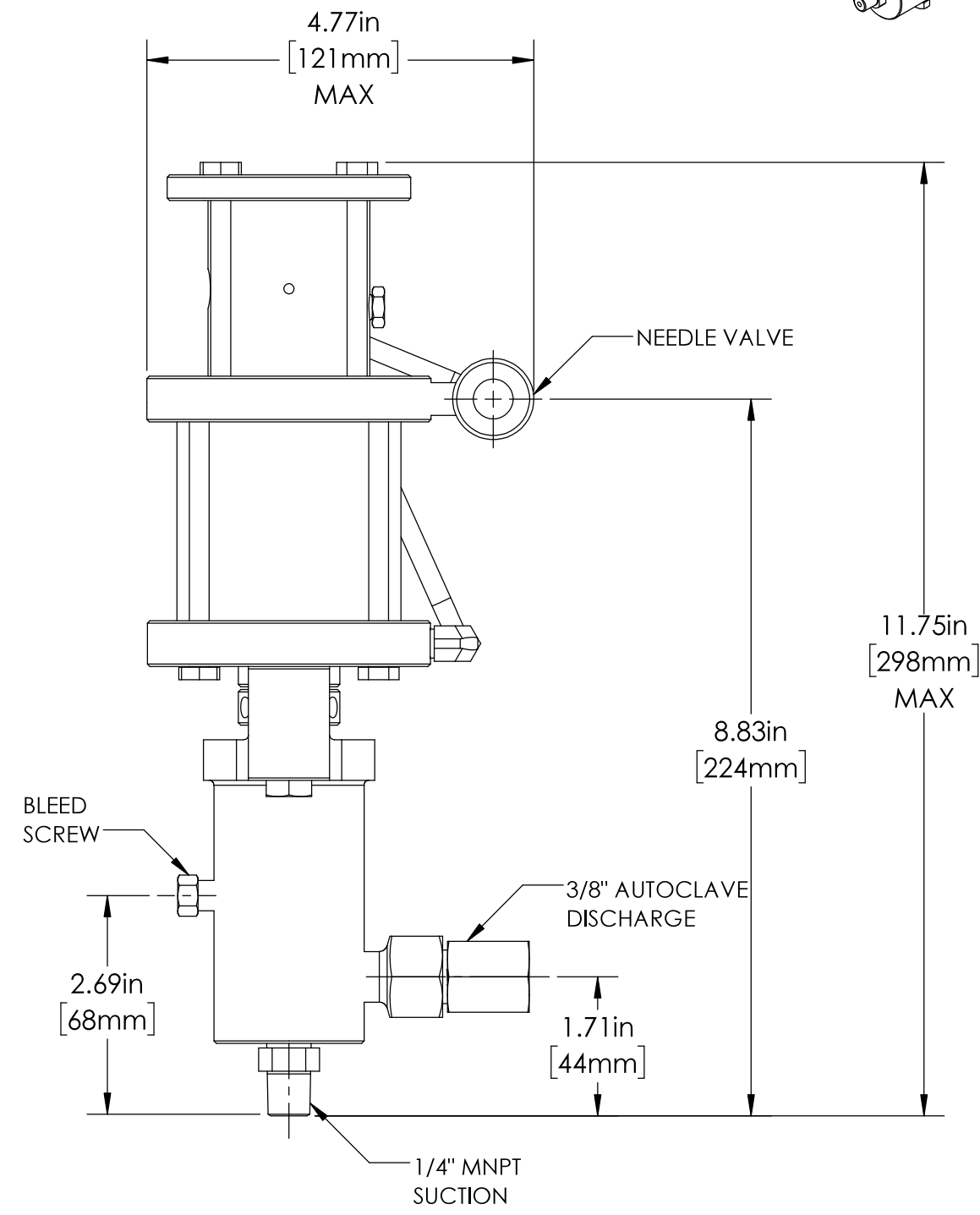
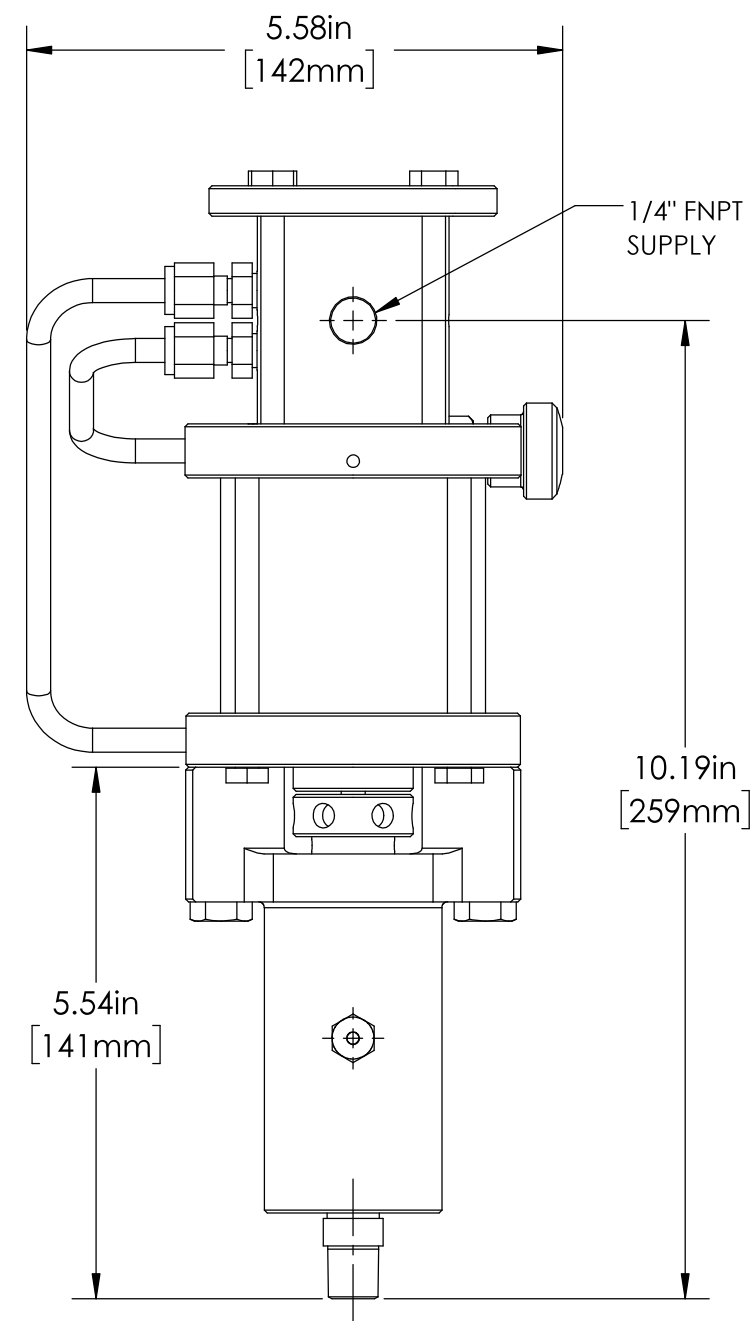
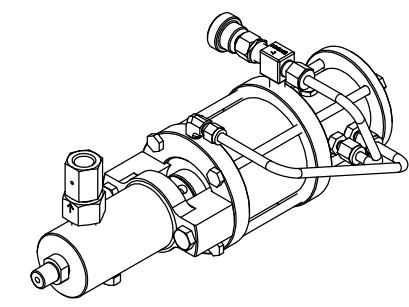


DWG. TITLE 1/8" DEDICATED 1250-B PUMP ASSEMBLY		SIZE B
REV 002	P25B11C3DQ34	
DRAWING NUMBER		SHEET 2 OF 2

PROPRIETARY AND CONFIDENTIAL
THE INFORMATION CONTAINED HEREIN IS PROPRIETARY TO CHECKPOINT SYSTEMS AND SHALL NOT BE REPRODUCED OR DISCLOSED IN WHOLE OR IN PART OR USED FOR ANY PUPOSE EXCEPT WHEN SUCH USER POSSESSES DIRECT WRITTEN AUTHORIZATION FROM CHECKPOINT SYSTEMS

8 7 6 5 4 3 2 1

DATE	APPROVED
DEC-05-24	WRS



MARKETING DRAWING

CheckPoint
Pumps & Systems

DWG. TITLE		SIZE
1/4" DEDICATED 1250-B PUMP ASSEMBLY		
REV	P25B12C3DQ34	SHEET 1 OF 2
000		
DRAWING NUMBER		



PROPRIETARY AND CONFIDENTIAL
THE INFORMATION CONTAINED HEREIN IS PROPRIETARY TO CHECKPOINT SYSTEMS AND SHALL NOT BE REPRODUCED OR DISCLOSED IN WHOLE OR IN PART OR USED FOR ANY PURPOSE EXCEPT WHEN SUCH USER POSSESSES DIRECT WRITTEN AUTHORIZATION FROM CHECKPOINT SYSTEMS

WEIGHT	11.12 lb / 5.04 kg
--------	--------------------

8 7 6 5 4 3 2 1

P25B12C3DQ34 - CERAMIC - FKM

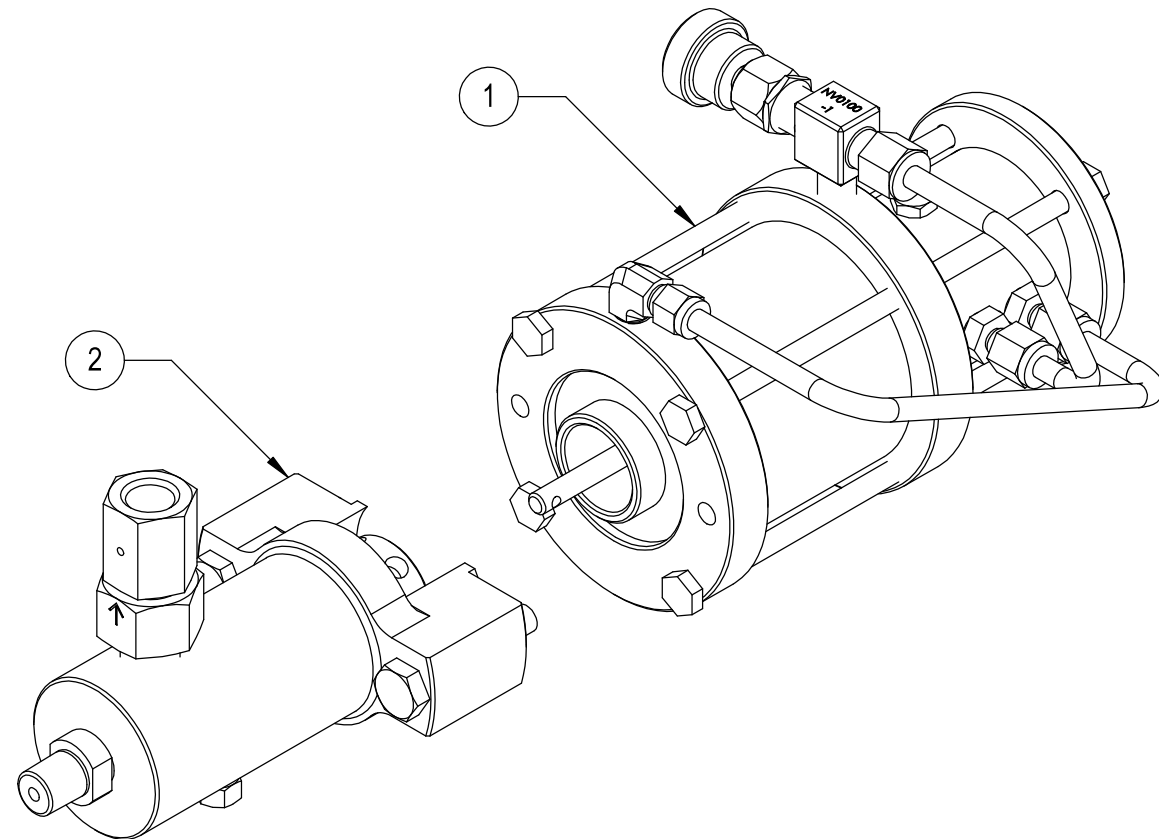
ITEM NO.	PART NUMBER	DESCRIPTION	QTY.
1	P25BXT1U	1250 MOTOR	1
2	W25D304CAQPN3Q6	WET END	1

P25B12C3DH35 - CERAMIC - HNBR

ITEM NO.	PART NUMBER	DESCRIPTION	QTY.
1	P25BXT1U	1250 MOTOR	1
2	W25D304CAHPN3H6	WET END	1

P25B12C3DF38 - CERAMIC - FFKM

ITEM NO.	PART NUMBER	DESCRIPTION	QTY.
1	P25BXT1U	1250 MOTOR	1
2	W25D304CAFPN3F6	WET END	1



NOTE: SERIAL NUMBER PLATE / ATTACH SCREWS NOT SHOWN

MARKETING DRAWING

CheckPoint
Pumps & Systems

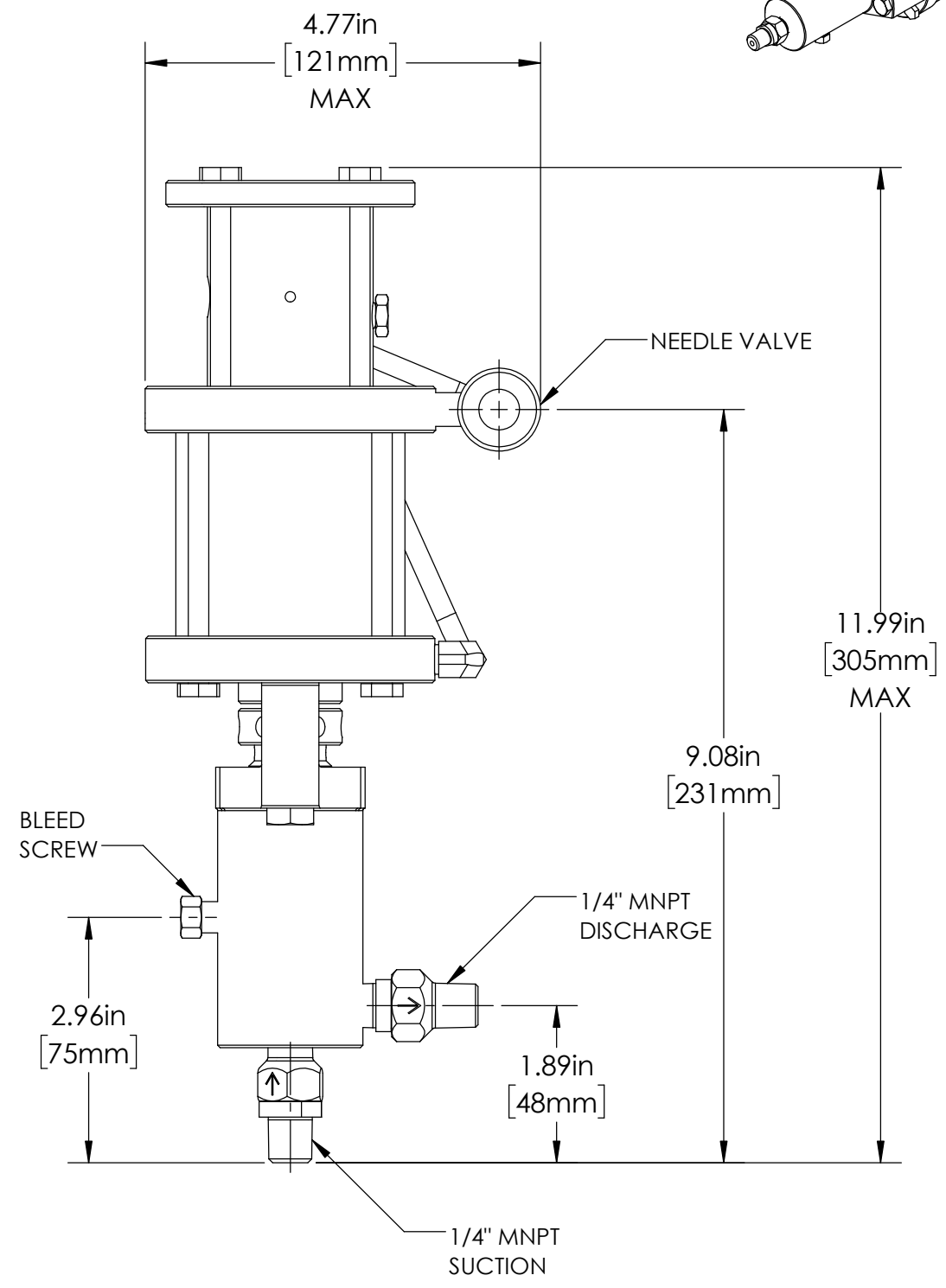
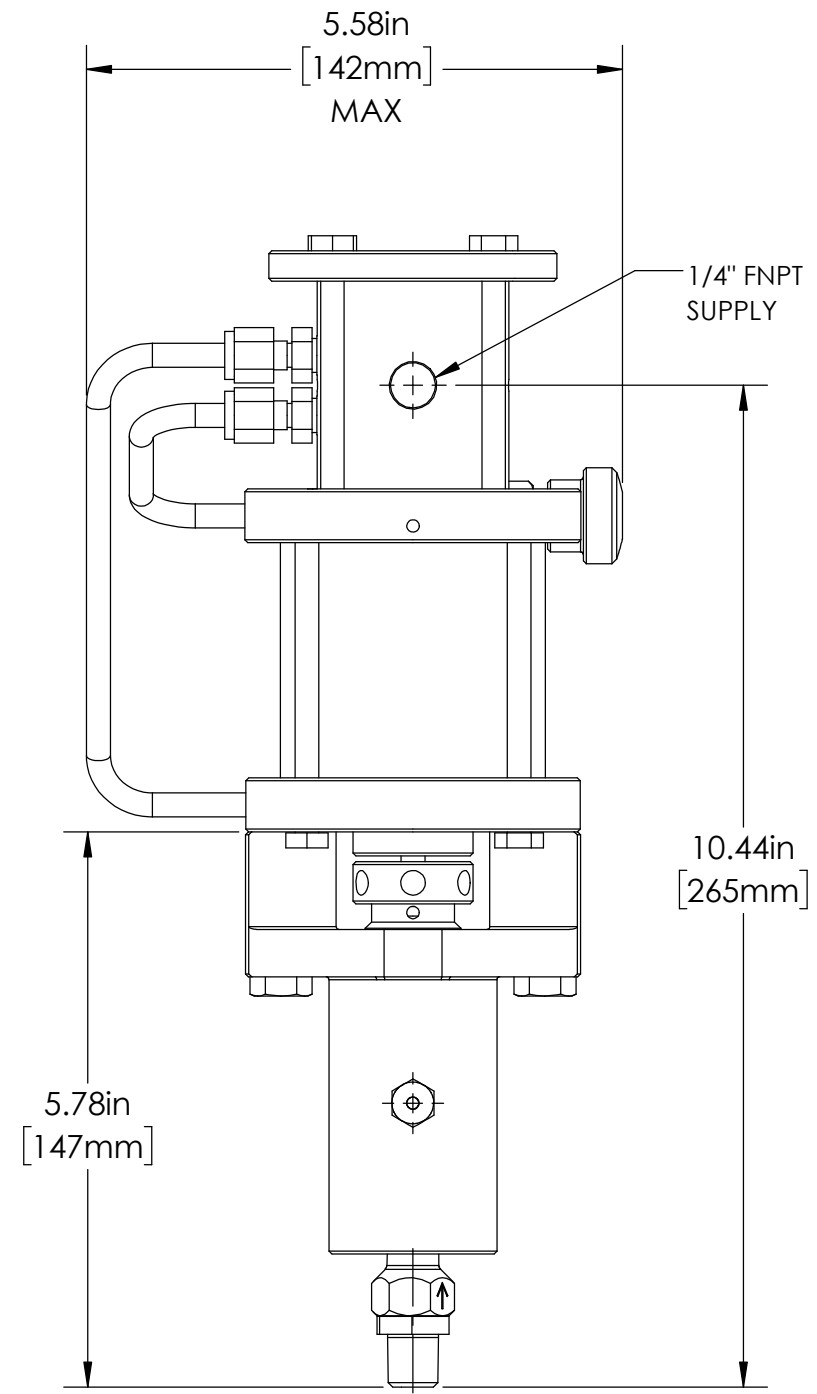
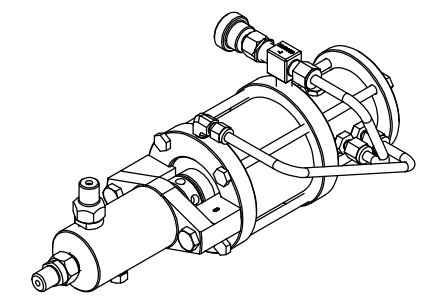


DWG. TITLE 1/4" DEDICATED 1250-B PUMP ASSEMBLY		SIZE B
REV 000	P25B12C3DQ34	
DRAWING NUMBER		SHEET 2 OF 2

PROPRIETARY AND CONFIDENTIAL
THE INFORMATION CONTAINED HEREIN IS PROPRIETARY TO CHECKPOINT SYSTEMS AND SHALL NOT BE REPRODUCED OR DISCLOSED IN WHOLE OR IN PART OR USED FOR ANY PURPOSE EXCEPT WHEN SUCH USER POSSESSES DIRECT WRITTEN AUTHORIZATION FROM CHECKPOINT SYSTEMS

8 7 6 5 4 3 2 1

DATE	APPROVED
DEC-05-24	WRS



MARKETING DRAWING

CheckPoint
Pumps & Systems

DWG. TITLE		REV	DRAWING NUMBER	SHEET 1 OF 2
1/2" MODULAR 1250-B PUMP ASSEMBLY				
002	P25B15C3QLC34	SIZE	B	



PROPRIETARY AND CONFIDENTIAL
THE INFORMATION CONTAINED HEREIN IS PROPRIETARY TO CHECKPOINT SYSTEMS AND SHALL NOT BE REPRODUCED OR DISCLOSED IN WHOLE OR IN PART OR USED FOR ANY PURPOSE EXCEPT WHEN SUCH USER POSSESSES DIRECT WRITTEN AUTHORIZATION FROM CHECKPOINT SYSTEMS

WEIGHT	10.23 lb / 4.64 kg
--------	--------------------

8 7 6 5 4 3 2 1

8

7

6

5

4

3

2

1

P25B15C3QLC34 - CERAMIC - FKM

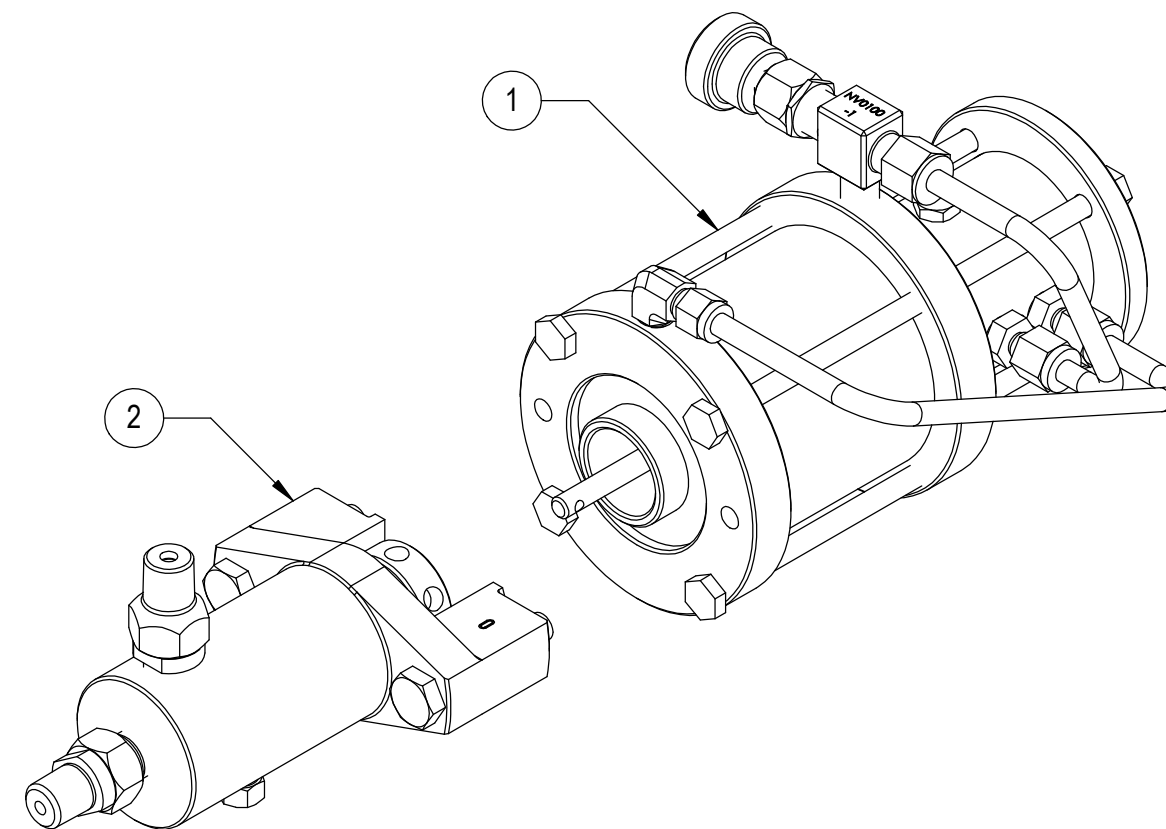
ITEM NO.	PART NUMBER	DESCRIPTION	QTY.
1	P25BXT1U	1250 MOTOR	1
2	W25M308CAQPN3Q6	WET END	1

P25B15C3HLC35 - CERAMIC - HNBR

ITEM NO.	PART NUMBER	DESCRIPTION	QTY.
1	P25BXT1U	1250 MOTOR	1
2	W25M308CAHPN3H6	WET END	1

P25B15C3FLC38 - CERAMIC - FFKM

ITEM NO.	PART NUMBER	DESCRIPTION	QTY.
1	P25BXT1U	1250 MOTOR	1
2	W25M308CAFPN3F6	WET END	1



NOTE: SERIAL NUMBER PLATE / ATTACH SCREWS NOT SHOWN

MARKETING DRAWING

CheckPoint
 Pumps & Systems

 DWG. TITLE
**1/2" MODULAR
 1250-B PUMP ASSEMBLY**

REV 002 P25B15C3QLC34

 SIZE
B

DRAWING NUMBER

SHEET 2 OF 2

 PROPRIETARY AND CONFIDENTIAL
 THE INFORMATION CONTAINED HEREIN IS PROPRIETARY TO CHECKPOINT SYSTEMS AND SHALL NOT
 BE REPRODUCED OR DISCLOSED IN WHOLE OR IN PART OR USED FOR ANY PURPOSE EXCEPT WHEN
 SUCH USER POSSESSES DIRECT WRITTEN AUTHORIZATION FROM CHECKPOINT SYSTEMS

8

7

6

5

4

3

2

1

8

7

6

5

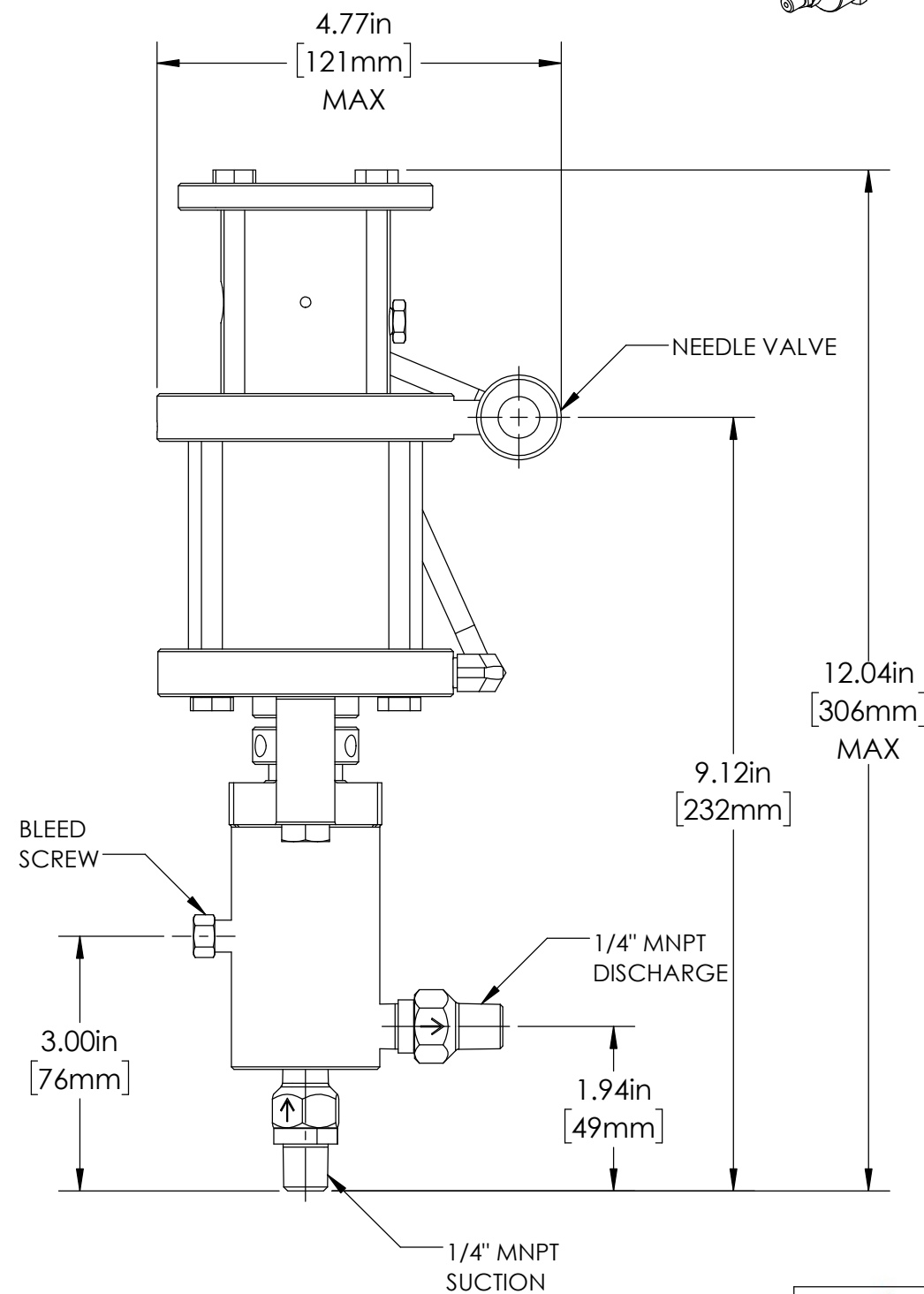
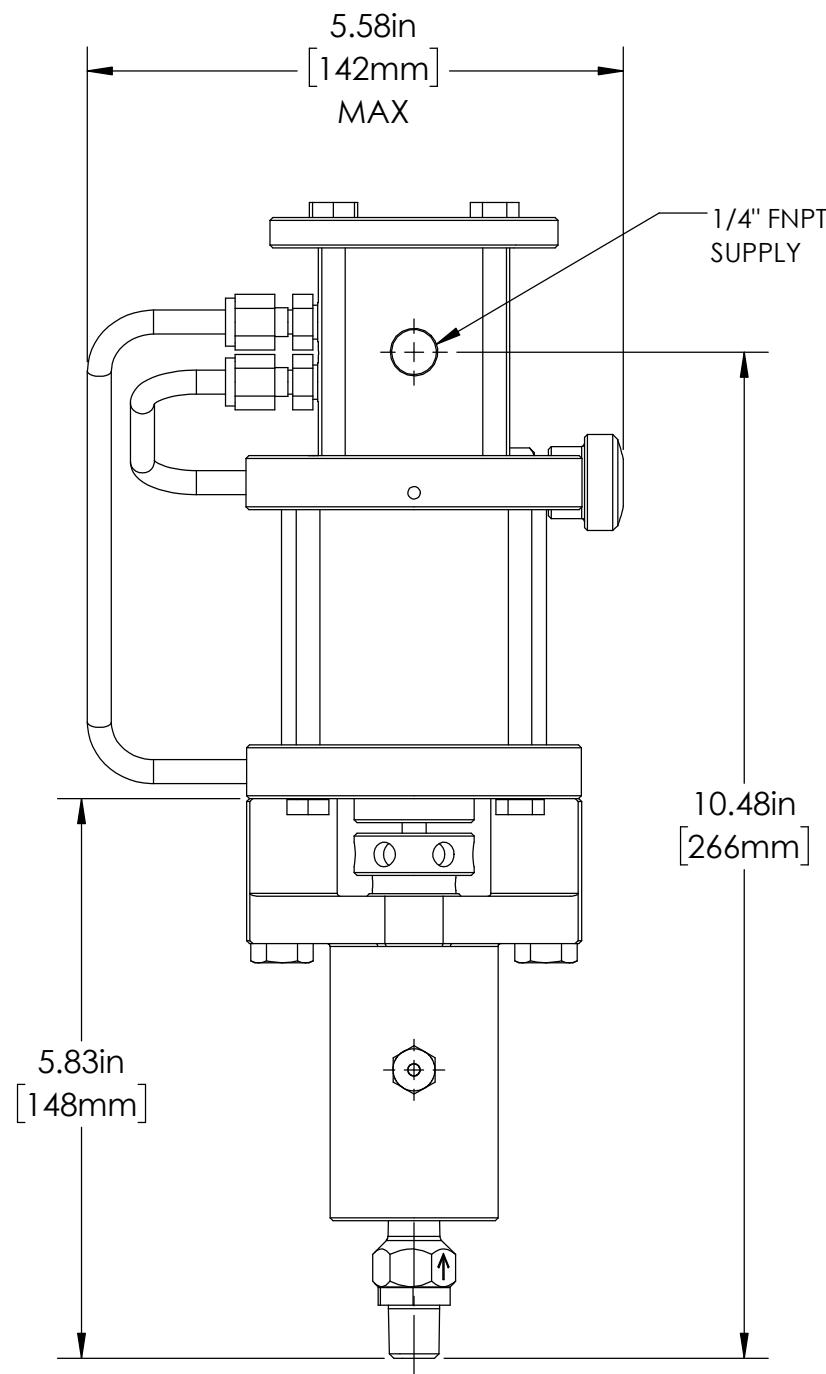
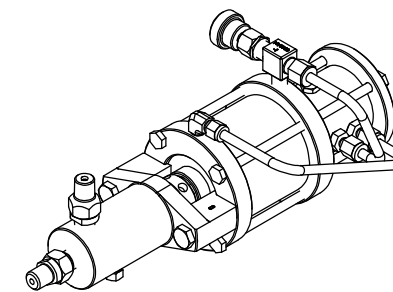
4

3

2

1

DATE	APPROVED
DEC-05-24	WRS



MARKETING DRAWING

CheckPoint
Pumps & Systems

DWG. TITLE
3/16" MODULAR
1250-B PUMP ASSEMBLY

REV 004 P25B16C3QLC34

SIZE
B



PROPRIETARY AND CONFIDENTIAL
THE INFORMATION CONTAINED HEREIN IS PROPRIETARY TO CHECKPOINT SYSTEMS AND SHALL NOT BE REPRODUCED OR DISCLOSED IN WHOLE OR IN PART OR USED FOR ANY PURPOSE EXCEPT WHEN SUCH USER POSSESSES DIRECT WRITTEN AUTHORIZATION FROM CHECKPOINT SYSTEMS

WEIGHT 10.40 lb / 4.71 kg

DRAWING NUMBER SHEET 1 OF 2

8

7

6

5

4

3

2

1

8

7

6

5

4

3

2

1

P25B16C3QLC34 - CERAMIC - FKM

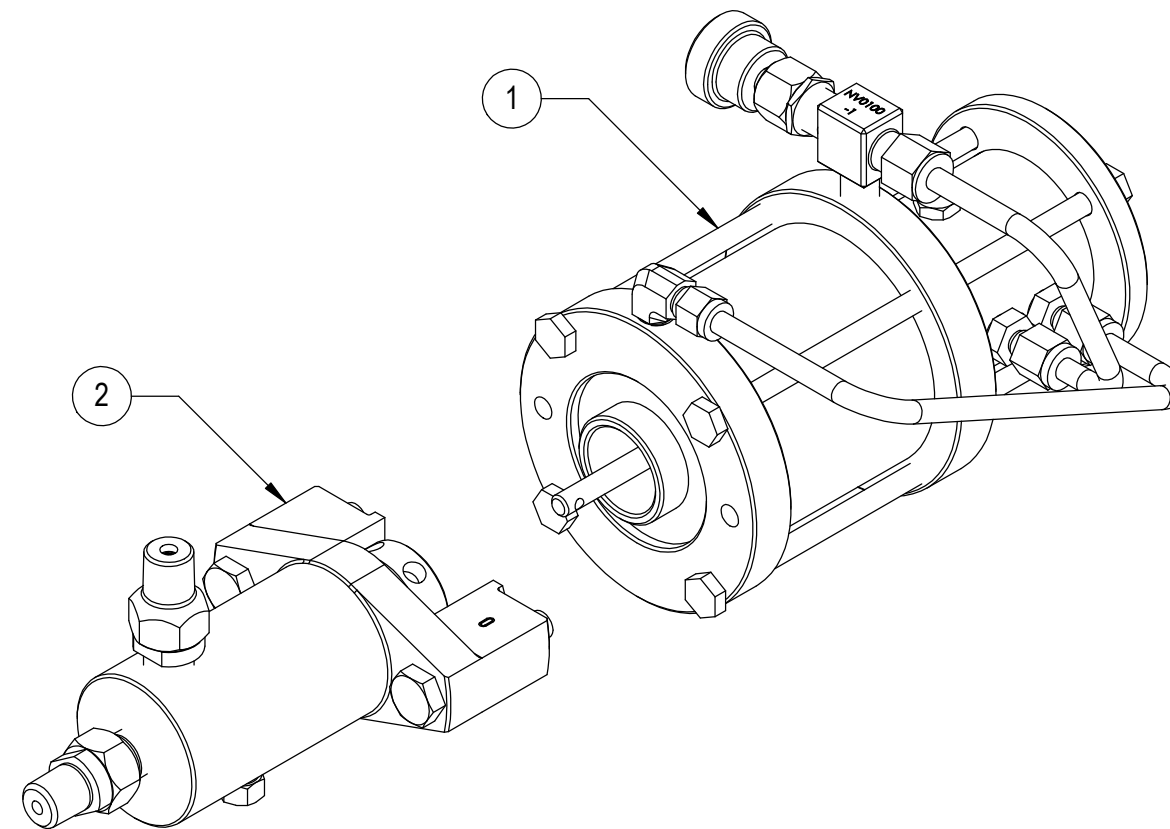
ITEM NO.	PART NUMBER	DESCRIPTION	QTY.
1	P25BXT1U	1250 MOTOR	1
2	W25M303CAQPN3Q6	WET END	1

P25B16C3HLC35 - CERAMIC - HNBR

ITEM NO.	PART NUMBER	DESCRIPTION	QTY.
1	P25BXT1U	1250 MOTOR	1
2	W25M303CAHPN3H6	WET END	1

P25B16C3FLC38 - CERAMIC - FFKM

ITEM NO.	PART NUMBER	DESCRIPTION	QTY.
1	P25BXT1U	1250 MOTOR	1
2	W25M303CAFPN3F6	WET END	1



NOTE: SERIAL NUMBER PLATE / ATTACH SCREWS NOT SHOWN

MARKETING DRAWING

CheckPoint
 Pumps & Systems

 DWG. TITLE
**3/16" MODULAR
 1250-B PUMP ASSEMBLY**

REV 004 P25B16C3QLC34

 SIZE
B

 PROPRIETARY AND CONFIDENTIAL
 THE INFORMATION CONTAINED HEREIN IS PROPRIETARY TO CHECKPOINT SYSTEMS AND SHALL NOT
 BE REPRODUCED OR DISCLOSED IN WHOLE OR IN PART OR USED FOR ANY PURPOSE EXCEPT WHEN
 SUCH USER POSSESSES DIRECT WRITTEN AUTHORIZATION FROM CHECKPOINT SYSTEMS

DRAWING NUMBER

SHEET 2 OF 2

8

7

6

5

4

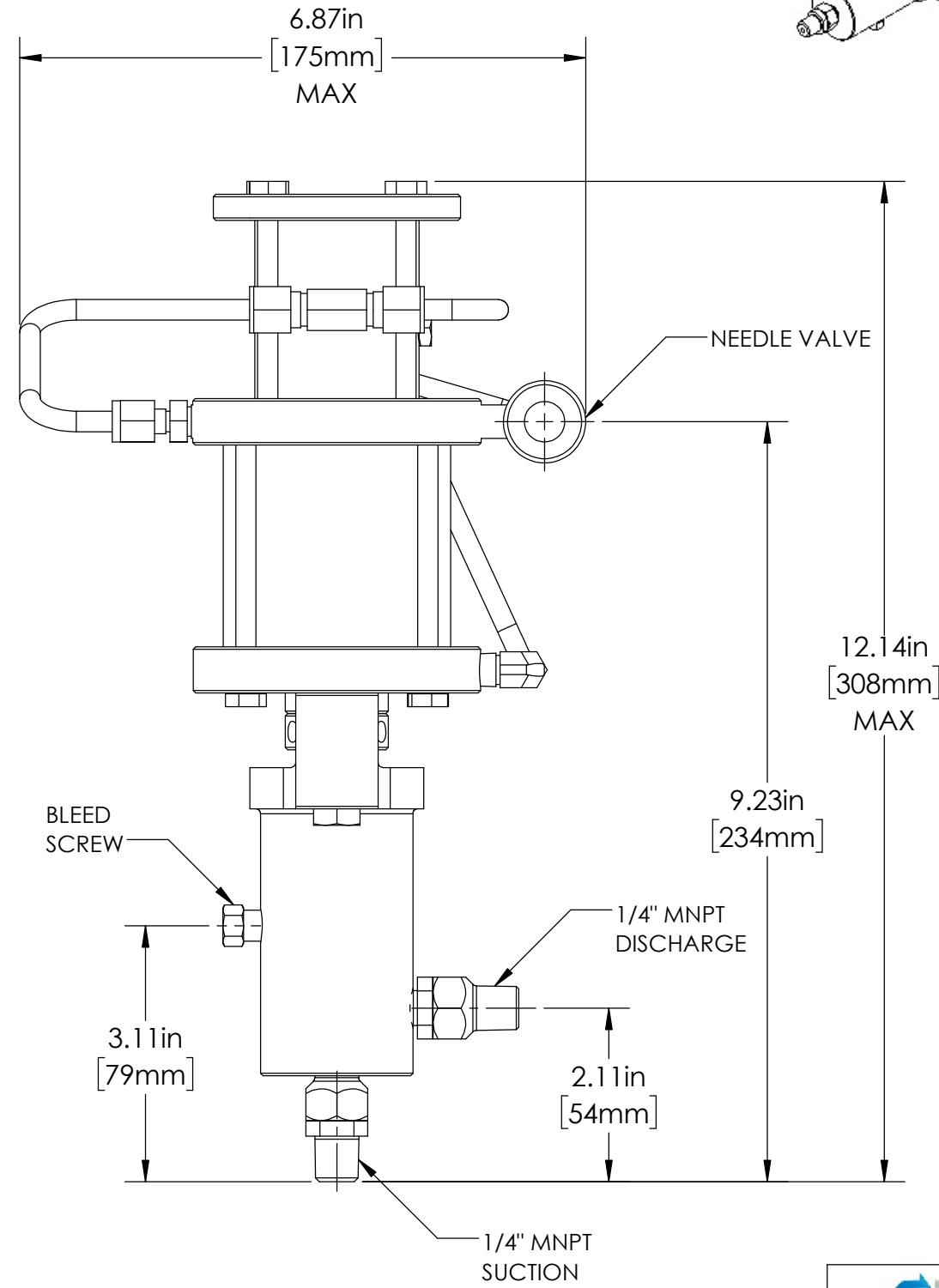
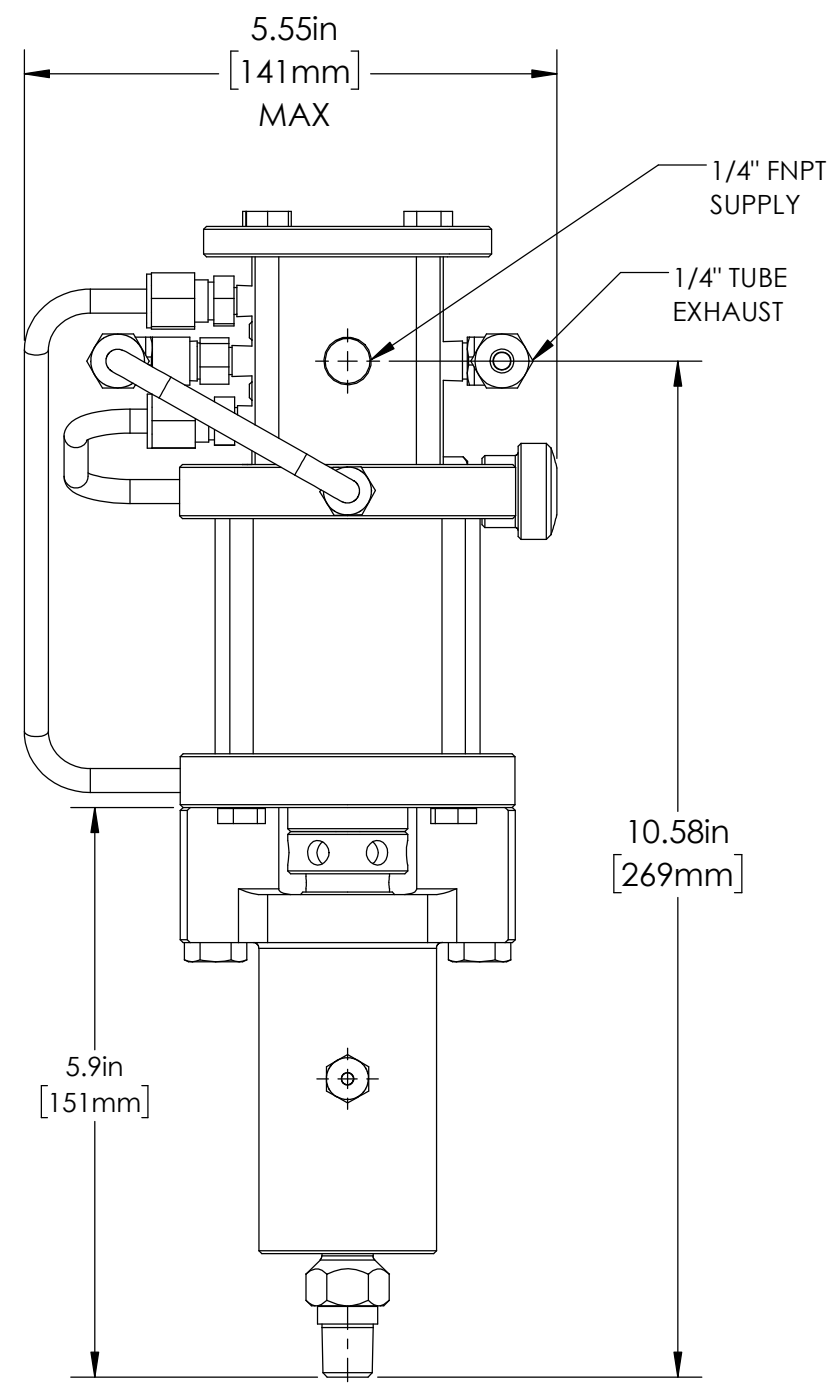
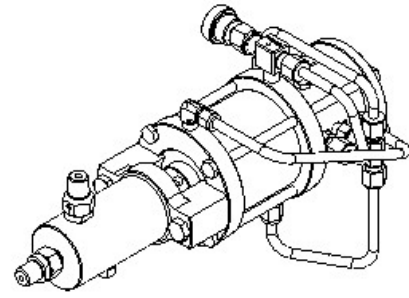
3

2

1

8 7 6 5 4 3 2 1

DATE	APPROVED
DEC-05-24	WRS



MARKETING DRAWING

CheckPoint
Pumps & Systems



DWG. TITLE		REV	SIZE
1/8" DEDICATED 1250-G PUMP ASSEMBLY			
DRAWING NUMBER		SHEET 1 OF 2	
P25G11C3DQ34			

PROPRIETARY AND CONFIDENTIAL
THE INFORMATION CONTAINED HEREIN IS PROPRIETARY TO CHECKPOINT SYSTEMS AND SHALL NOT BE REPRODUCED OR DISCLOSED IN WHOLE OR IN PART OR USED FOR ANY PURPOSE EXCEPT WHEN SUCH USER POSSESSES DIRECT WRITTEN AUTHORIZATION FROM CHECKPOINT SYSTEMS

WEIGHT	11.52 lb / 5.22 kg
--------	--------------------

8 7 6 5 4 3 2 1

8

7

6

5

4

3

2

1

P25G11C3DQ34 - CERAMIC - FKM

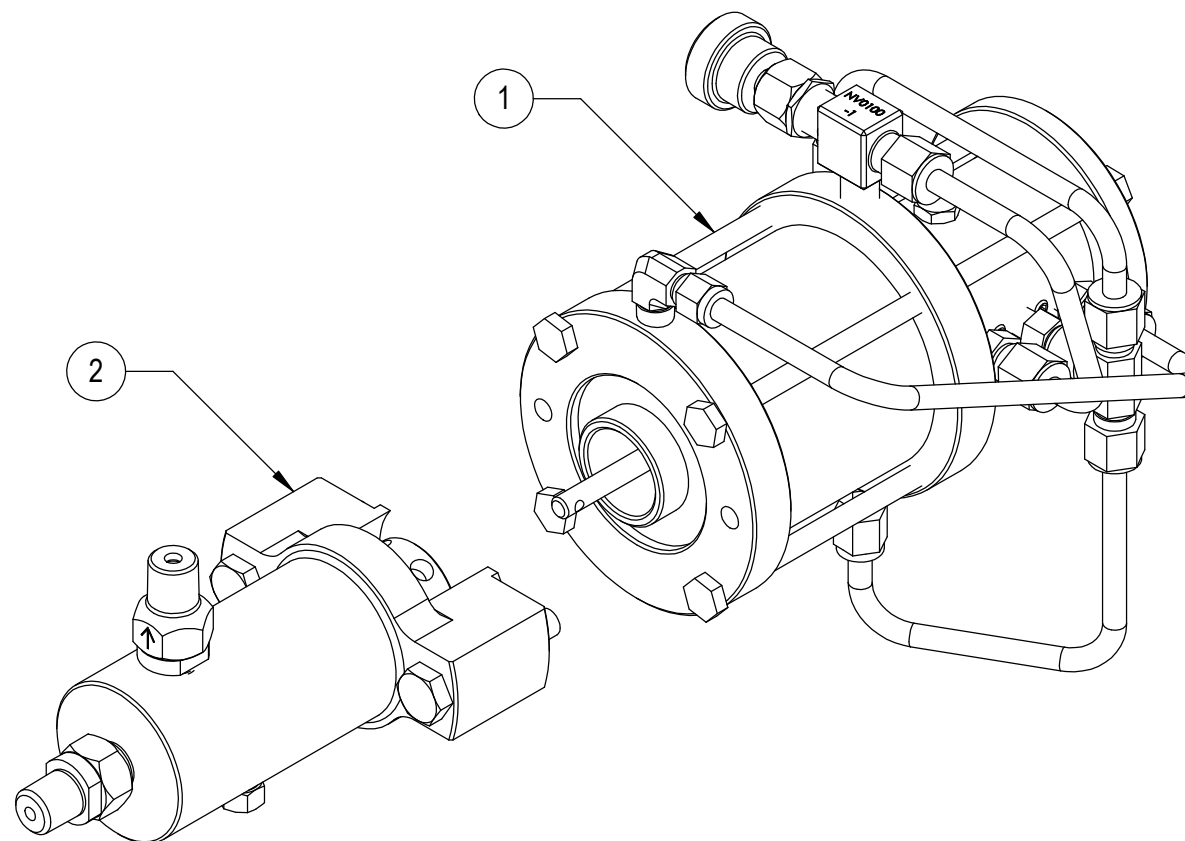
ITEM NO.	PART NUMBER	DESCRIPTION	QTY.
1	P25GXT1U	1250 MOTOR ASSY	1
2	W25D302CAQPN3Q6	WET END	1

P25G11C3DH35 - CERAMIC - HNBR

ITEM NO.	PART NUMBER	DESCRIPTION	QTY.
1	P25GXT1U	1250 MOTOR ASSY	1
2	W25D302CAHPN3H6	WET END	1

P25G11C3DF38 - CERAMIC - FFKM

ITEM NO.	PART NUMBER	DESCRIPTION	QTY.
1	P25GXT1U	1250 MOTOR ASSY	1
2	W25D302CAFPN3F6	WET END	1



NOTE: SERIAL NUMBER PLATE / ATTACH SCREWS NOT SHOWN

MARKETING DRAWING

CheckPoint
Pumps & Systems



DWG. TITLE 1/8" DEDICATED 1250-G PUMP ASSEMBLY		SIZE B
REV 002	P25G11C3DQ34	
DRAWING NUMBER		SHEET 2 OF 2

PROPRIETARY AND CONFIDENTIAL
THE INFORMATION CONTAINED HEREIN IS PROPRIETARY TO CHECKPOINT SYSTEMS AND SHALL NOT BE REPRODUCED OR DISCLOSED IN WHOLE OR IN PART OR USED FOR ANY PUPOSE EXCEPT WHEN SUCH USER POSSESSES DIRECT WRITTEN AUTHORIZATION FROM CHECKPOINT SYSTEMS

8

7

6

5

4

3

2

1

8

7

6

5

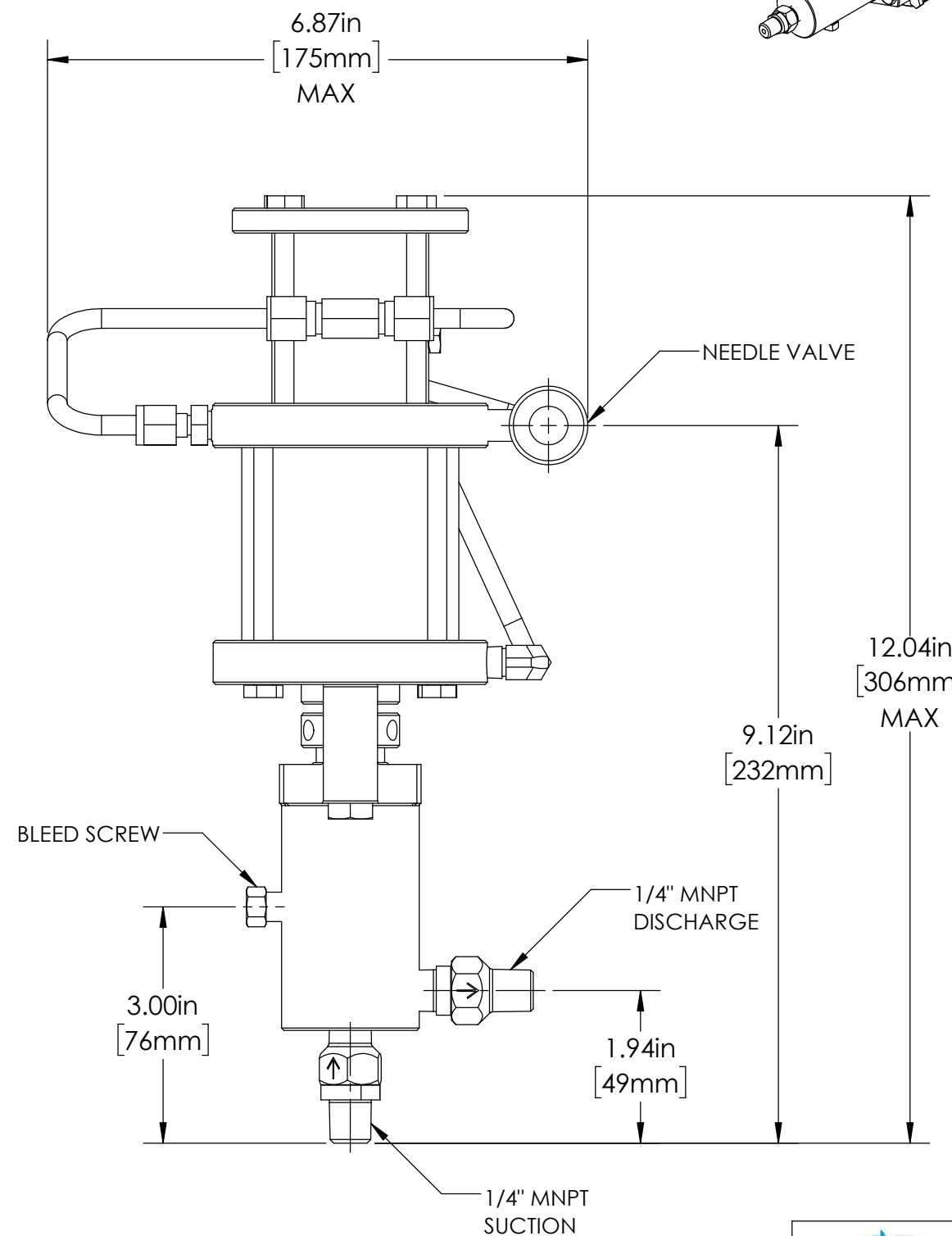
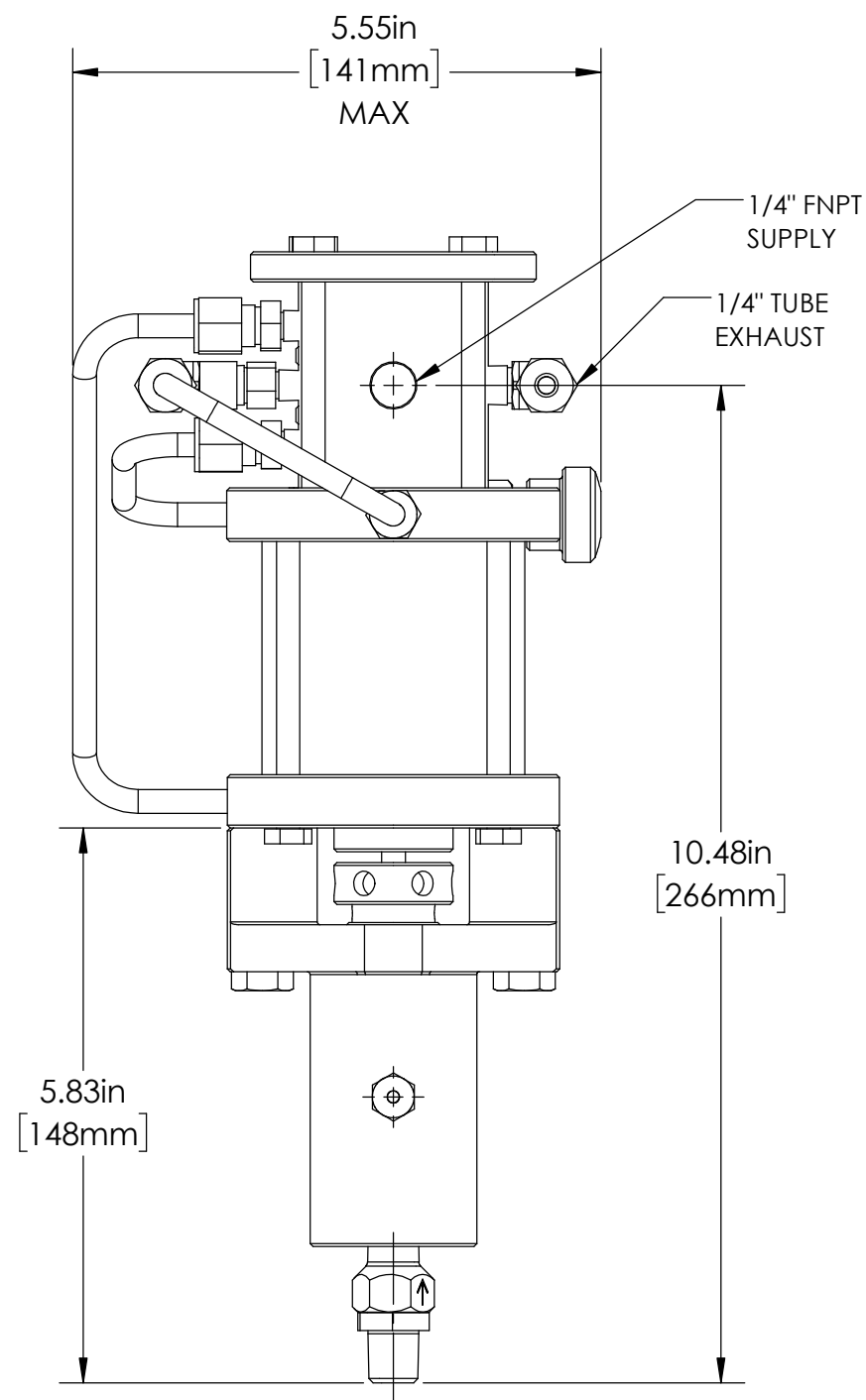
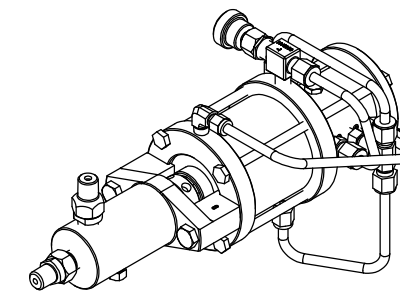
4

3

2

1

DATE	APPROVED
DEC-05-24	WRS



MARKETING DRAWING

CheckPoint
Pumps & Systems

DWG. TITLE
1/8" MODULAR
1250-G PUMP ASSEMBLY

REV 000 P25G11C3QLC34

SIZE
B



PROPRIETARY AND CONFIDENTIAL
THE INFORMATION CONTAINED HEREIN IS PROPRIETARY TO CHECKPOINT SYSTEMS AND SHALL NOT BE REPRODUCED OR DISCLOSED IN WHOLE OR IN PART OR USED FOR ANY PURPOSE EXCEPT WHEN SUCH USER POSSESSES DIRECT WRITTEN AUTHORIZATION FROM CHECKPOINT SYSTEMS

WEIGHT 10.83 lb / 4.91 kg

DRAWING NUMBER SHEET 1 OF 2

8

7

6

5

4

3

2

1

8

7

6

5

4

3

2

1

P25G11C3QLC34 - CERAMIC - FKM

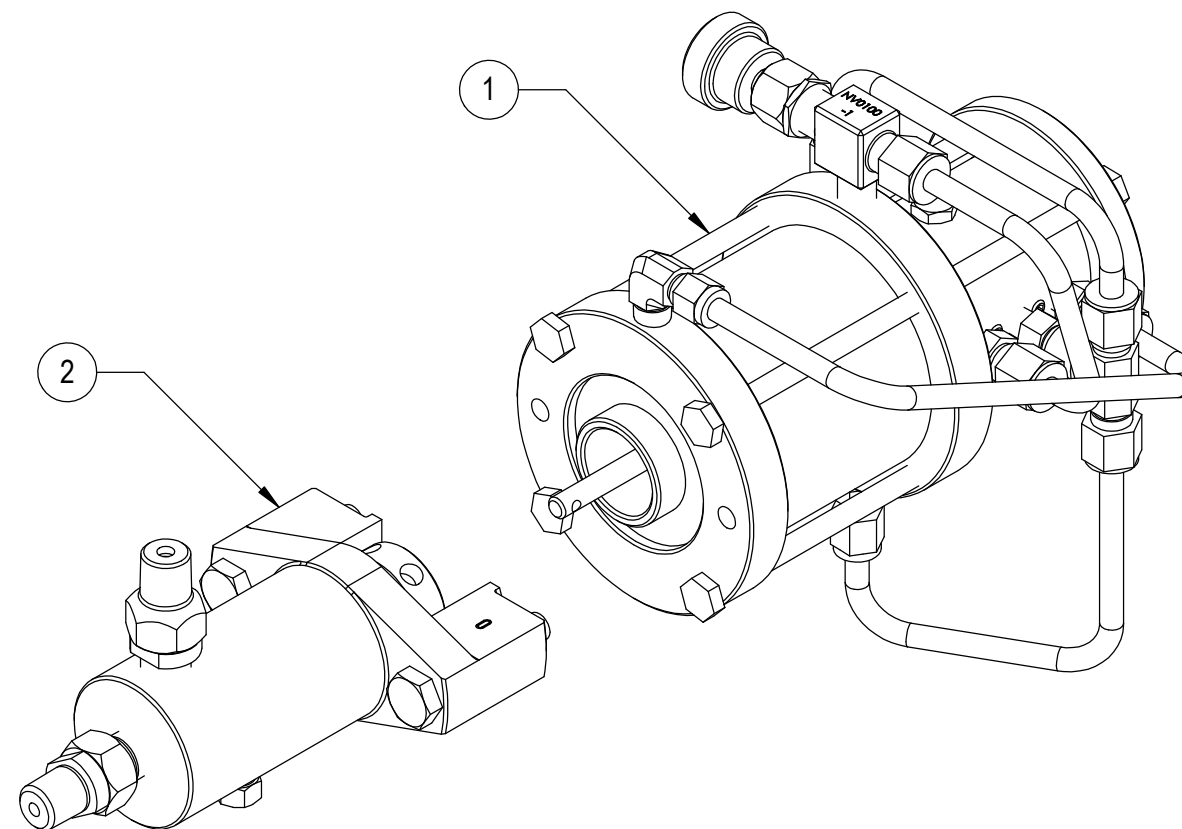
ITEM NO.	PART NUMBER	DESCRIPTION	QTY.
1	P25GXT1U	1250 MOTOR ASSY	1
2	W25M302CAQPN3Q6	WET END	1

P25G11C3HLC35 - CERAMIC - HNBR

ITEM NO.	PART NUMBER	DESCRIPTION	QTY.
1	P25GXT1U	1250 MOTOR ASSY	1
2	W25M302CAHPN3H6	WET END	1

P25G11C3FLC38 - CERAMIC - FFKM

ITEM NO.	PART NUMBER	DESCRIPTION	QTY.
1	P25BXT1U	1250 MOTOR	1
2	W25M302CAFPN3F6	WET END	1



NOTE: SERIAL NUMBER PLATE / ATTACH SCREWS NOT SHOWN

MARKETING DRAWING

CheckPoint
 Pumps & Systems

 DWG. TITLE
**1/8" MODULAR
 1250-G PUMP ASSEMBLY**

 REV
000 P25G11C3QLC34

 SIZE
B

 PROPRIETARY AND CONFIDENTIAL
 THE INFORMATION CONTAINED HEREIN IS PROPRIETARY TO CHECKPOINT SYSTEMS AND SHALL NOT
 BE REPRODUCED OR DISCLOSED IN WHOLE OR IN PART OR USED FOR ANY PURPOSE EXCEPT WHEN
 SUCH USER POSSESSES DIRECT WRITTEN AUTHORIZATION FROM CHECKPOINT SYSTEMS

DRAWING NUMBER

SHEET 2 OF 2

8

7

6

5

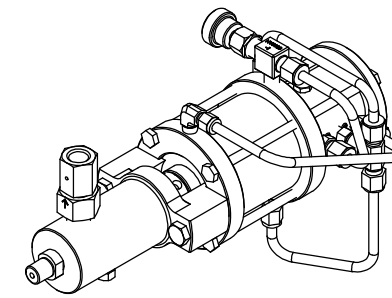
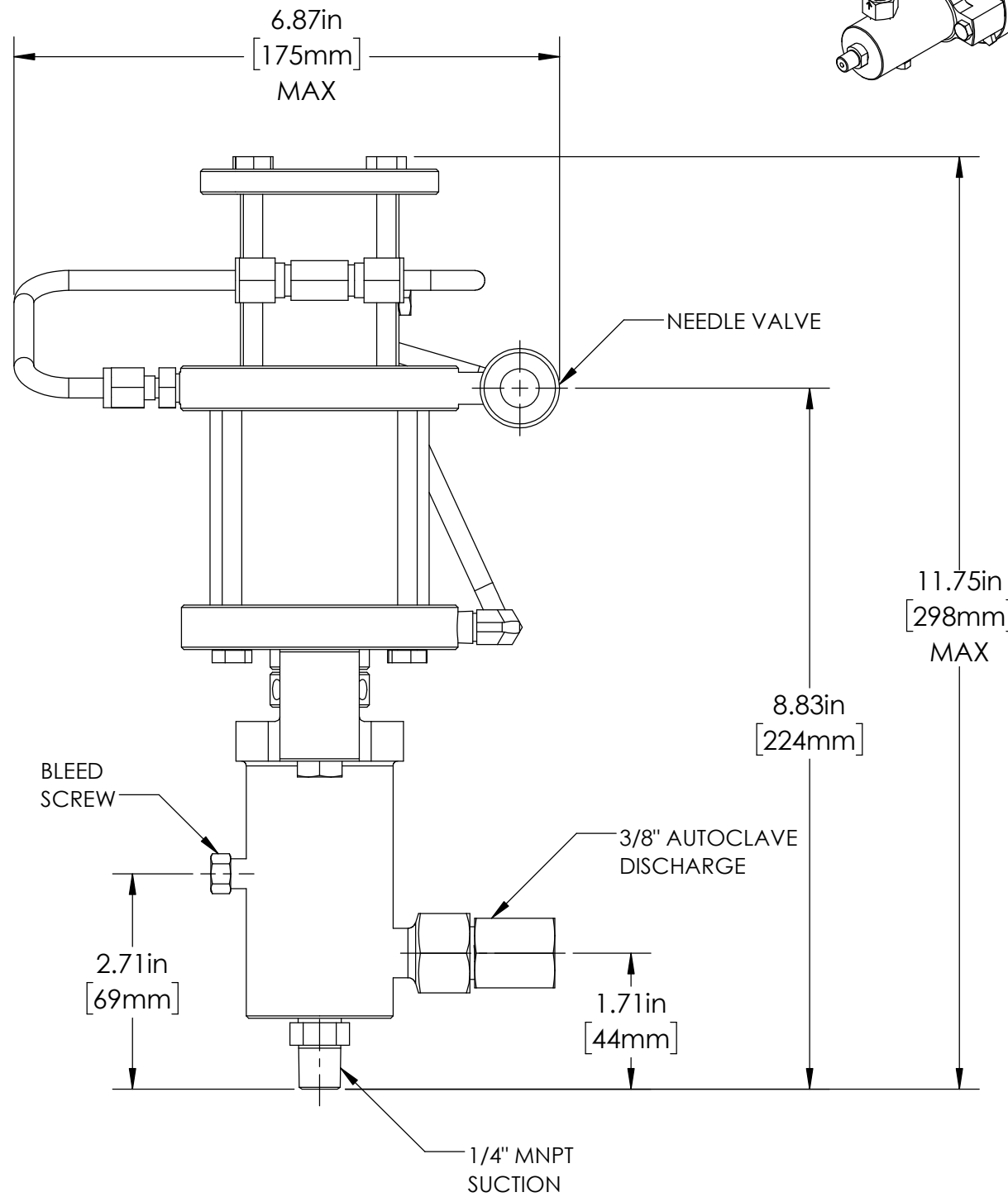
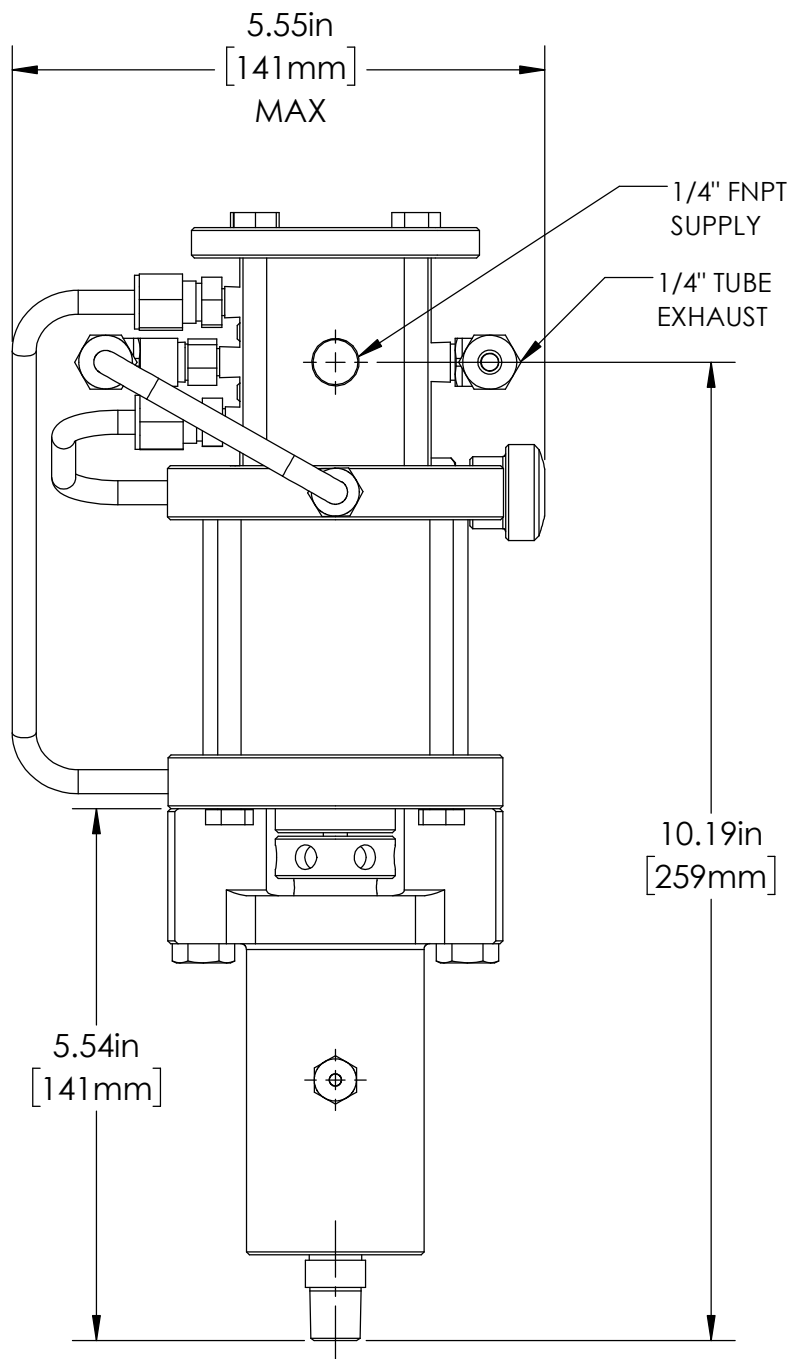
4

3

2

1

DATE	APPROVED
DEC-05-24	WRS



MARKETING DRAWING

CheckPoint
Pumps & Systems

DWG. TITLE
**1/4" DEDICATED
1250-G PUMP ASSEMBLY**

REV
000 **P25G12C3DQ34**

SIZE
B

DRAWING NUMBER

SHEET 1 OF 2

WEIGHT 11.56 lb / 5.24 kg

PROPRIETARY AND CONFIDENTIAL
THE INFORMATION CONTAINED HEREIN IS PROPRIETARY TO CHECKPOINT SYSTEMS AND SHALL NOT BE REPRODUCED OR DISCLOSED IN WHOLE OR IN PART OR USED FOR ANY PURPOSE EXCEPT WHEN SUCH USER POSSESSES DIRECT WRITTEN AUTHORIZATION FROM CHECKPOINT SYSTEMS



8

7

6

5

4

3

2

1

P25G12C3DQ34 - CERAMIC - FKM

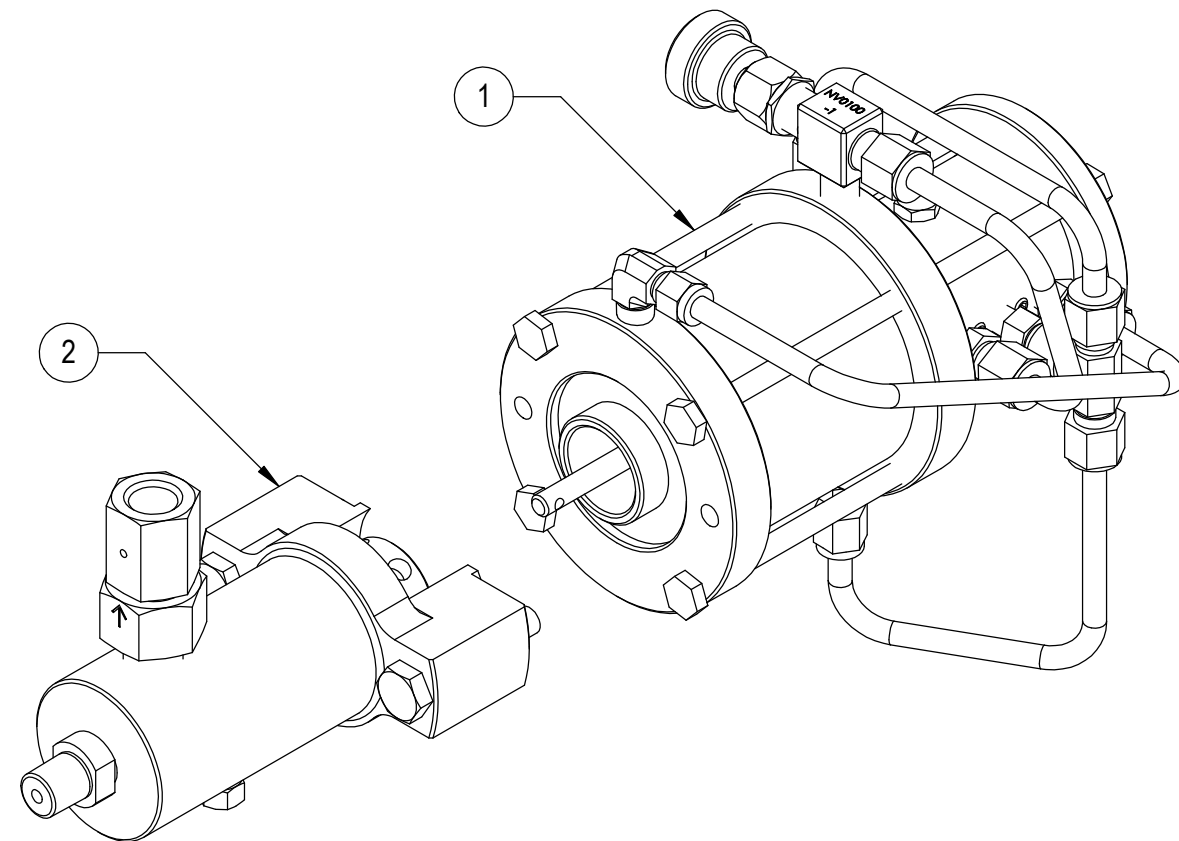
ITEM NO.	PART NUMBER	DESCRIPTION	QTY.
1	P25GXT1U	1250 MOTOR ASSY	1
2	W25D304CAQPN3Q6	WET END	1

P25G12C3DH35 - CERAMIC - HNBR

ITEM NO.	PART NUMBER	DESCRIPTION	QTY.
1	P25GXT1U	1250 MOTOR ASSY	1
2	W25D304CAHPN3H6	WET END	1

P25G12C3DF38 - CERAMIC - FFKM

ITEM NO.	PART NUMBER	DESCRIPTION	QTY.
1	P25GXT1U	1250 MOTOR ASSY	1
2	W25D304CAFPN3F6	WET END	1



NOTE: SERIAL NUMBER PLATE / ATTACH SCREWS NOT SHOWN

MARKETING DRAWING

CheckPoint
Pumps & Systems



DWG. TITLE 1/4" DEDICATED 1250-G PUMP ASSEMBLY		SIZE B
REV 000	P25G12C3DQ34	
DRAWING NUMBER		SHEET 2 OF 2

PROPRIETARY AND CONFIDENTIAL
THE INFORMATION CONTAINED HEREIN IS PROPRIETARY TO CHECKPOINT SYSTEMS AND SHALL NOT BE REPRODUCED OR DISCLOSED IN WHOLE OR IN PART OR USED FOR ANY PUPOSE EXCEPT WHEN SUCH USER POSSESSES DIRECT WRITTEN AUTHORIZATION FROM CHECKPOINT SYSTEMS

8

7

6

5

4

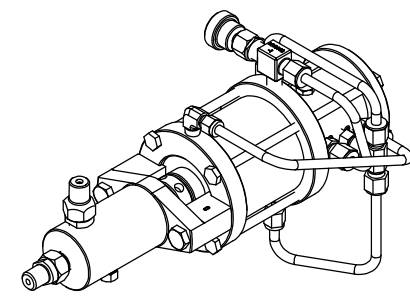
3

2

1

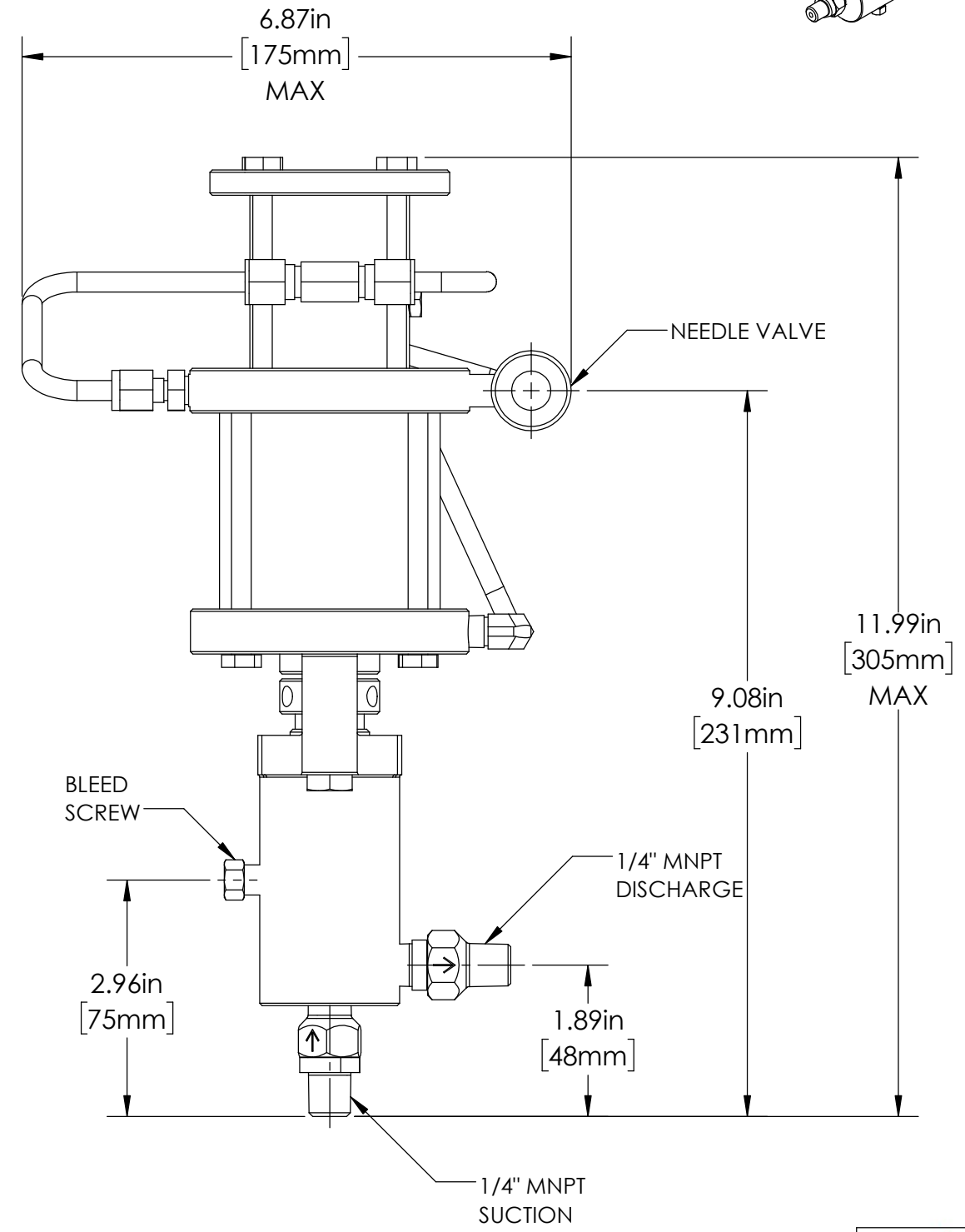
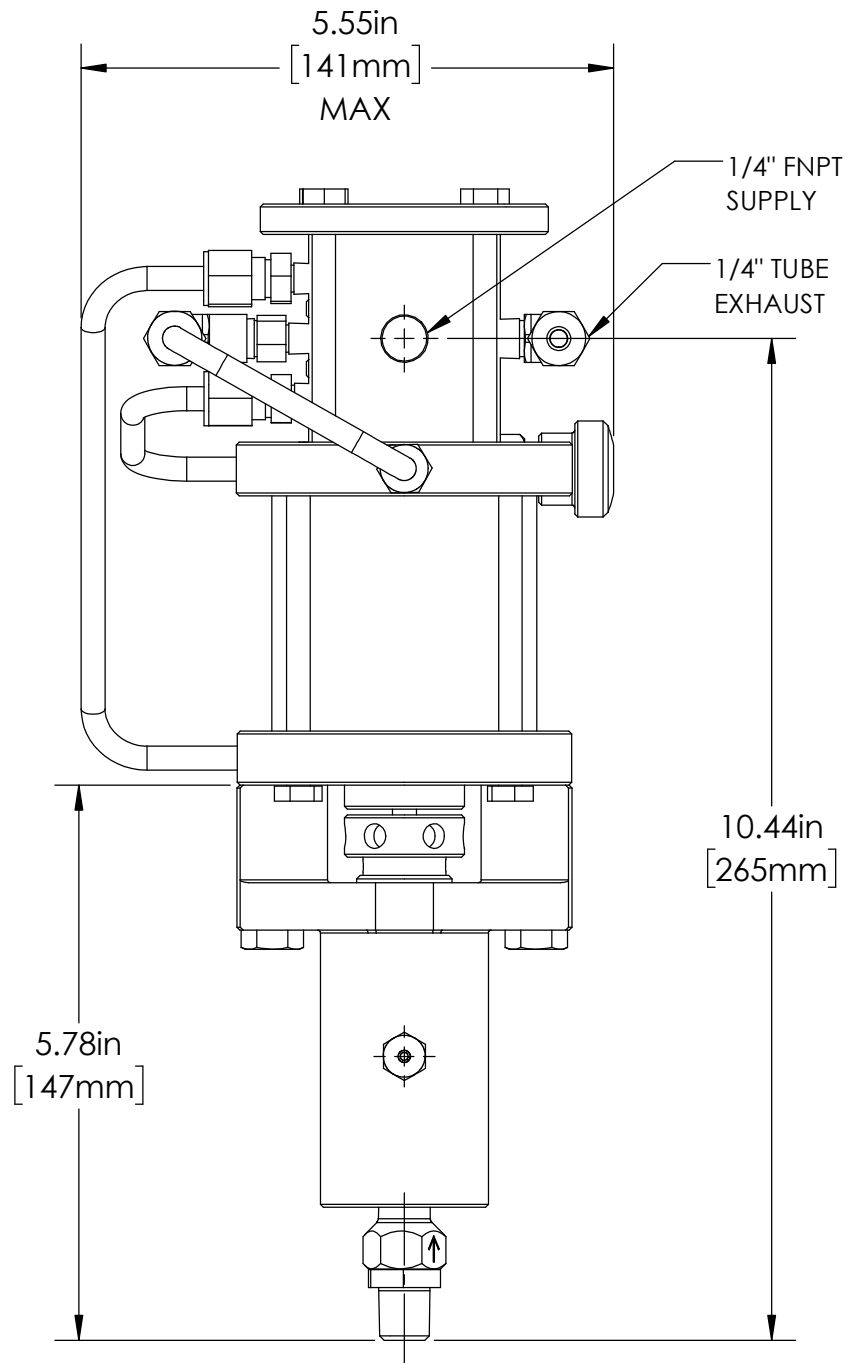
8 7 6 5 4 3 2 1

DATE	APPROVED
DEC-05-24	WRS



D
C
B
A

D
C
B
A



MARKETING DRAWING

CheckPoint
Pumps & Systems

DWG. TITLE
**3/8" MODULAR
1250-G PUMP ASSEMBLY**

REV	002	P25G13C3QLC34	SIZE B
-----	-----	---------------	------------------



PROPRIETARY AND CONFIDENTIAL
THE INFORMATION CONTAINED HEREIN IS PROPRIETARY TO CHECKPOINT SYSTEMS AND SHALL NOT BE REPRODUCED OR DISCLOSED IN WHOLE OR IN PART OR USED FOR ANY PURPOSE EXCEPT WHEN SUCH USER POSSESSES DIRECT WRITTEN AUTHORIZATION FROM CHECKPOINT SYSTEMS

WEIGHT	10.70 lb / 4.85 kg
--------	--------------------

DRAWING NUMBER SHEET 1 OF 2

8 7 6 5 4 3 2 1

P25G13C3QLC34 - CERAMIC - FKM

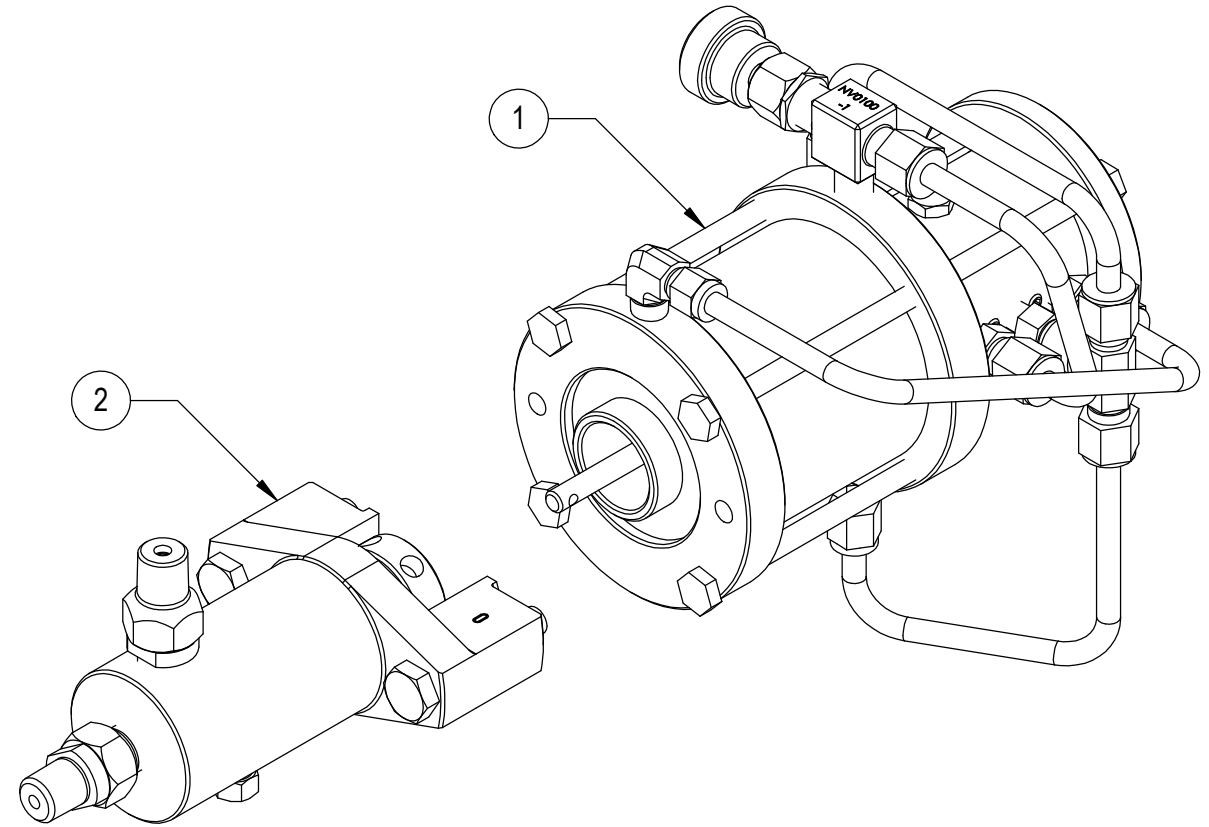
ITEM NO.	PART NUMBER	DESCRIPTION	QTY.
1	P25GXT1U	1250 MOTOR ASSY	1
2	W25M306CAQPN3Q6	WET END	1

P25G13C3HLC35 - CERAMIC - HNBR

ITEM NO.	PART NUMBER	DESCRIPTION	QTY.
1	P25GXT1U	1250 MOTOR ASSY	1
2	W25M306CAHPN3H6	WET END	1

P25G13C3FLC38 - CERAMIC - FFKM

ITEM NO.	PART NUMBER	DESCRIPTION	QTY.
1	P25GXT1U	1250 MOTOR ASSY	1
2	W25M306CAFPN3F6	WET END	1



NOTE: SERIAL NUMBER PLATE / ATTACH SCREWS NOT SHOWN

MARKETING DRAWING

CheckPoint
Pumps & Systems



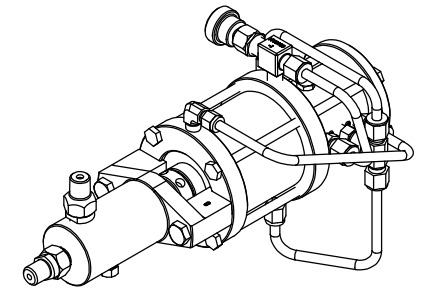
DWG. TITLE
**3/8" MODULAR
1250-G PUMP ASSEMBLY**

REV 002	P25G13C3QLC34	SIZE B
-------------------	----------------------	------------------

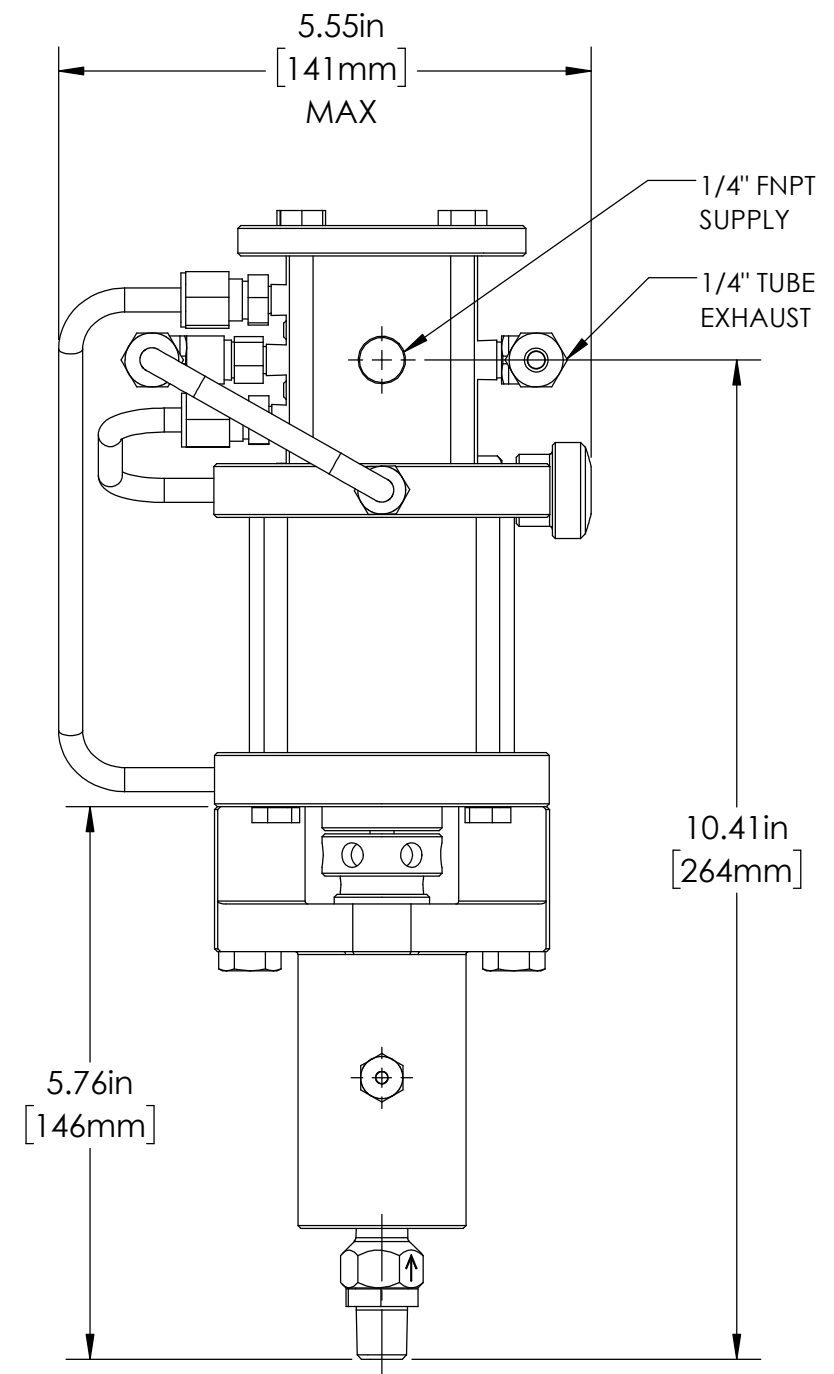
PROPRIETARY AND CONFIDENTIAL
THE INFORMATION CONTAINED HEREIN IS PROPRIETARY TO CHECKPOINT SYSTEMS AND SHALL NOT BE REPRODUCED OR DISCLOSED IN WHOLE OR IN PART OR USED FOR ANY PUPOSE EXCEPT WHEN SUCH USER POSSESSES DIRECT WRITTEN AUTHORIZATION FROM CHECKPOINT SYSTEMS

8 7 6 5 4 3 2 1

DATE	APPROVED
DEC-05-24	WRS



D
C
B
A



MARKETING DRAWING

CheckPoint
Pumps & Systems

DWG. TITLE
1/4" MODULAR
1250-G PUMP ASSEMBLY

REV 002 P25G12C3QLC34

SIZE
B



PROPRIETARY AND CONFIDENTIAL
THE INFORMATION CONTAINED HEREIN IS PROPRIETARY TO CHECKPOINT SYSTEMS AND SHALL NOT BE REPRODUCED OR DISCLOSED IN WHOLE OR IN PART OR USED FOR ANY PURPOSE EXCEPT WHEN SUCH USER POSSESSES DIRECT WRITTEN AUTHORIZATION FROM CHECKPOINT SYSTEMS

WEIGHT	10.72 lb / 4.86 kg
--------	--------------------

8 7 6 5 4 3 2 1

P25G12C3QLC34 - CERAMIC - FKM

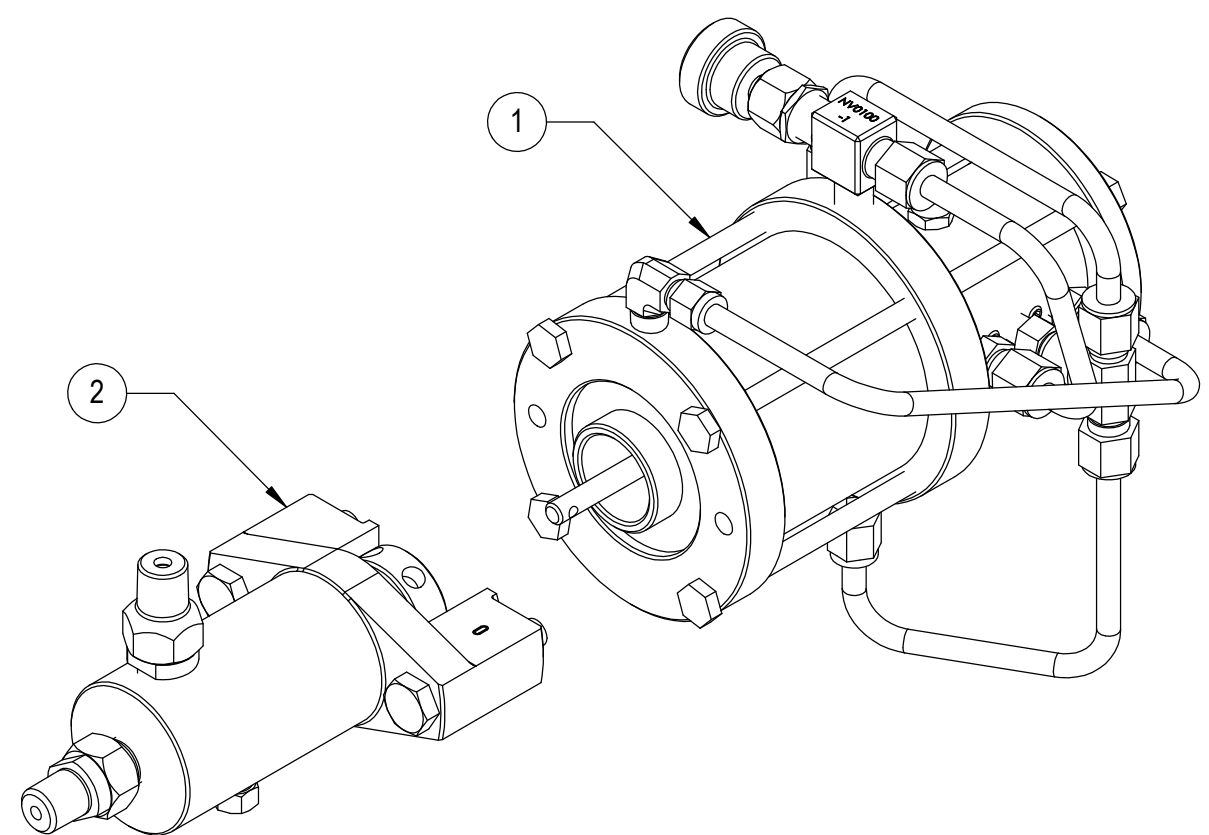
ITEM NO.	PART NUMBER	DESCRIPTION	QTY.
1	P25GXT1U	1250 MOTOR ASSY	1
2	W25M304CAQPN3Q6	WET END	1

P25G12C3HLC35 - CERAMIC - HNBR

ITEM NO.	PART NUMBER	DESCRIPTION	QTY.
1	P25GXT1U	1250 MOTOR ASSY	1
2	W25M304CAHPN3H6	WET END	1

P25G12C3FLC38 - CERAMIC - FFKM

ITEM NO.	PART NUMBER	DESCRIPTION	QTY.
1	P25GXT1U	1250 MOTOR ASSY	1
2	W25M304CAFPN3F6	WET END	1



NOTE: SERIAL NUMBER PLATE / ATTACH SCREWS NOT SHOWN

MARKETING DRAWING

CheckPoint
Pumps & Systems



DWG. TITLE
**1/4" MODULAR
 1250-G PUMP ASSEMBLY**

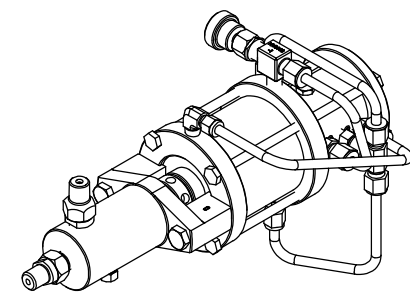
REV 002	P25G12C3QLC34	SIZE B
-------------------	----------------------	------------------

DRAWING NUMBER: SHEET 2 OF 2

PROPRIETARY AND CONFIDENTIAL
 THE INFORMATION CONTAINED HEREIN IS PROPRIETARY TO CHECKPOINT SYSTEMS AND SHALL NOT BE REPRODUCED OR DISCLOSED IN WHOLE OR IN PART OR USED FOR ANY PUPOSE EXCEPT WHEN SUCH USER POSSESSES DIRECT WRITTEN AUTHORIZATION FROM CHECKPOINT SYSTEMS

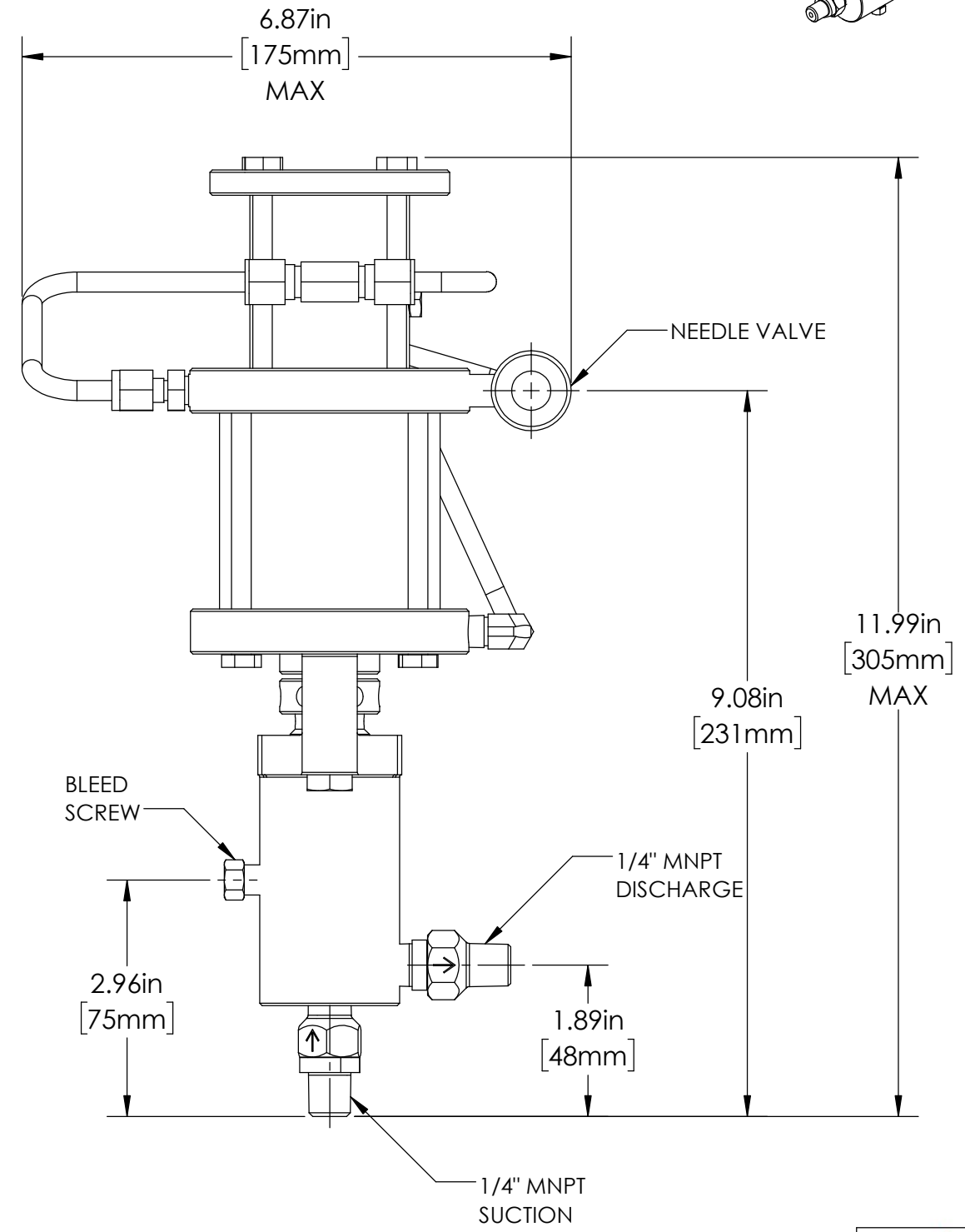
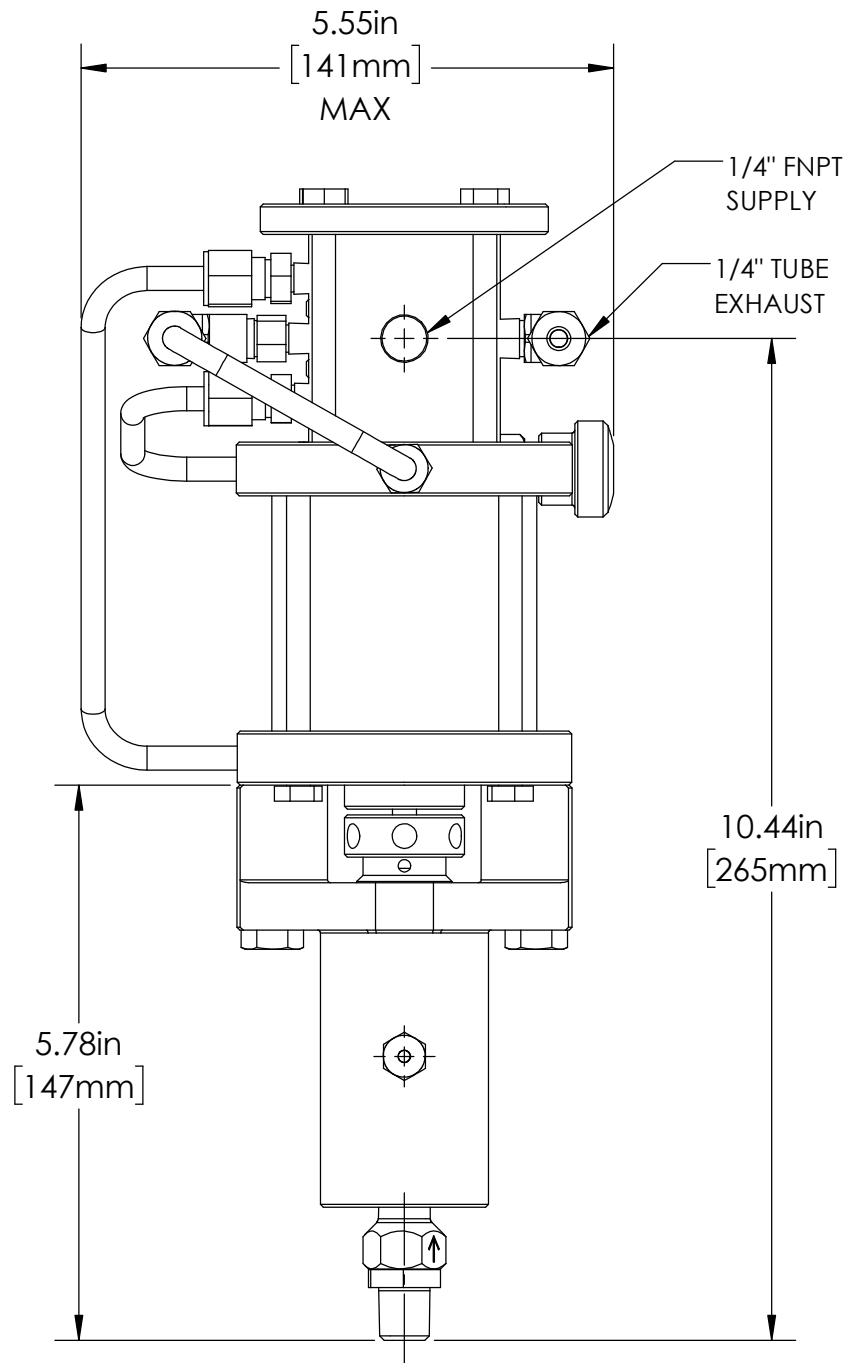
8 7 6 5 4 3 2 1

DATE	APPROVED
DEC-05-24	WRS



D
C
B
A

D
C
B
A



MARKETING DRAWING

CheckPoint
Pumps & Systems



DWG. TITLE	1/2" MODULAR 1250-G PUMP ASSEMBLY		SIZE
REV	002	P25G15C3QLC34	B
DRAWING NUMBER		SHEET 1 OF 2	

PROPRIETARY AND CONFIDENTIAL
THE INFORMATION CONTAINED HEREIN IS PROPRIETARY TO CHECKPOINT SYSTEMS AND SHALL NOT BE REPRODUCED OR DISCLOSED IN WHOLE OR IN PART OR USED FOR ANY PURPOSE EXCEPT WHEN SUCH USER POSSESSES DIRECT WRITTEN AUTHORIZATION FROM CHECKPOINT SYSTEMS

WEIGHT 10.67 lb / 4.83 kg
CPHO/PTL-SHR-295 REV. 01 EFF. DATE: 01 APR 2025

8 7 6 5 4 3 2 1

P25G15C3QLC34 - CERAMIC - FKM

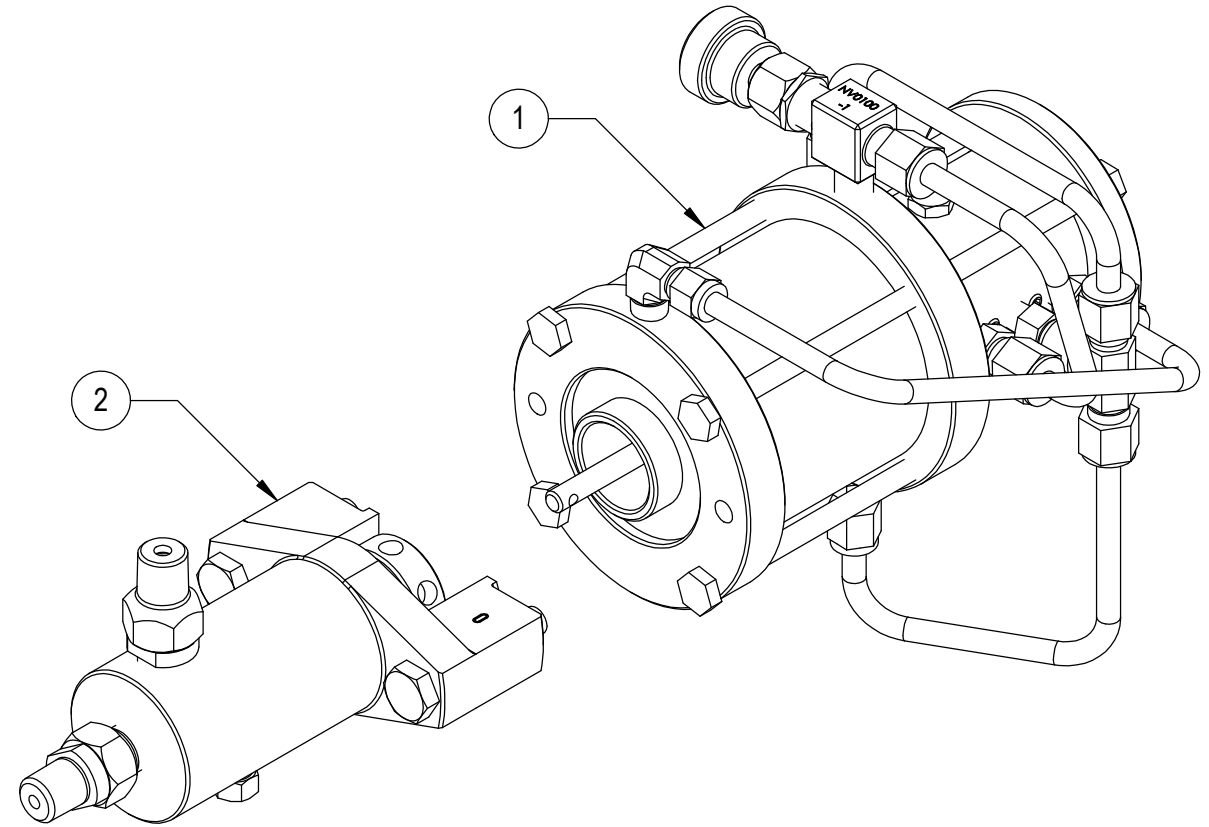
ITEM NO.	PART NUMBER	DESCRIPTION	QTY.
1	P25GXT1U	1250 MOTOR ASSY	1
2	W25M308CAQPN3Q6	WET END	1

P25G15C3HLC35 - CERAMIC - HNBR

ITEM NO.	PART NUMBER	DESCRIPTION	QTY.
1	P25GXT1U	1250 MOTOR ASSY	1
2	W25M308CAHPN3H6	WET END	1

P25G15C3FLC38 - CERAMIC - FFKM

ITEM NO.	PART NUMBER	DESCRIPTION	QTY.
1	P25GXT1U	1250 MOTOR ASSY	1
2	W25M308CAFPN3F6	WET END	1



NOTE: SERIAL NUMBER PLATE / ATTACH SCREWS NOT SHOWN

MARKETING DRAWING

CheckPoint
Pumps & Systems

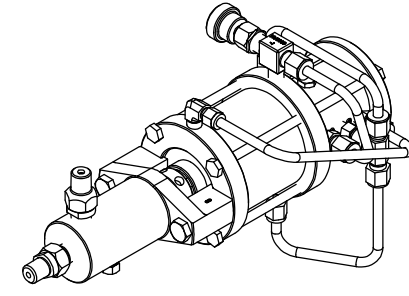


DWG. TITLE 1/2" MODULAR 1250-G PUMP ASSEMBLY		SIZE B
REV 002	P25G15C3QLC34	
DRAWING NUMBER		SHEET 2 OF 2

PROPRIETARY AND CONFIDENTIAL
THE INFORMATION CONTAINED HEREIN IS PROPRIETARY TO CHECKPOINT SYSTEMS AND SHALL NOT BE REPRODUCED OR DISCLOSED IN WHOLE OR IN PART OR USED FOR ANY PUPOSE EXCEPT WHEN SUCH USER POSSESSES DIRECT WRITTEN AUTHORIZATION FROM CHECKPOINT SYSTEMS

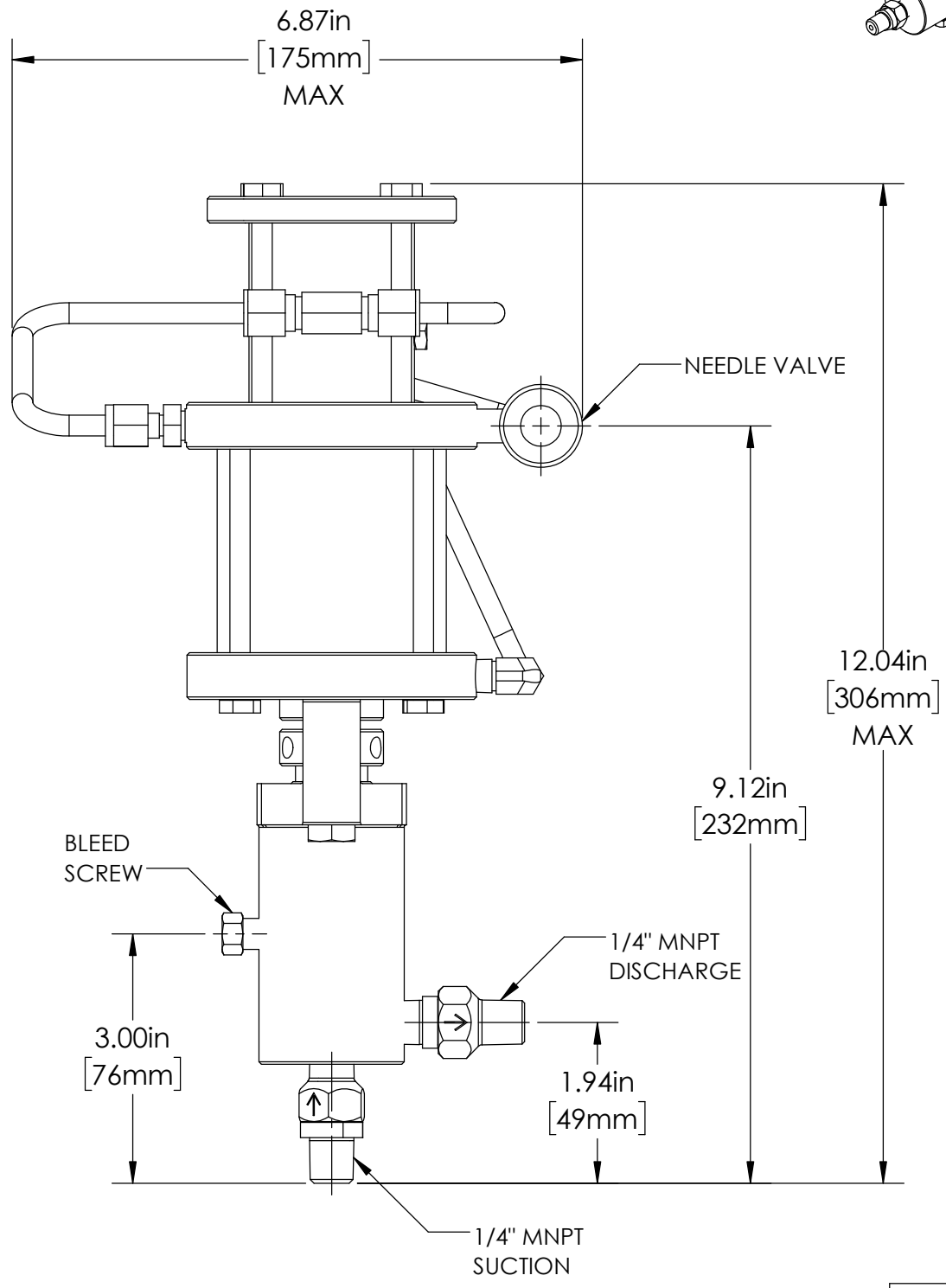
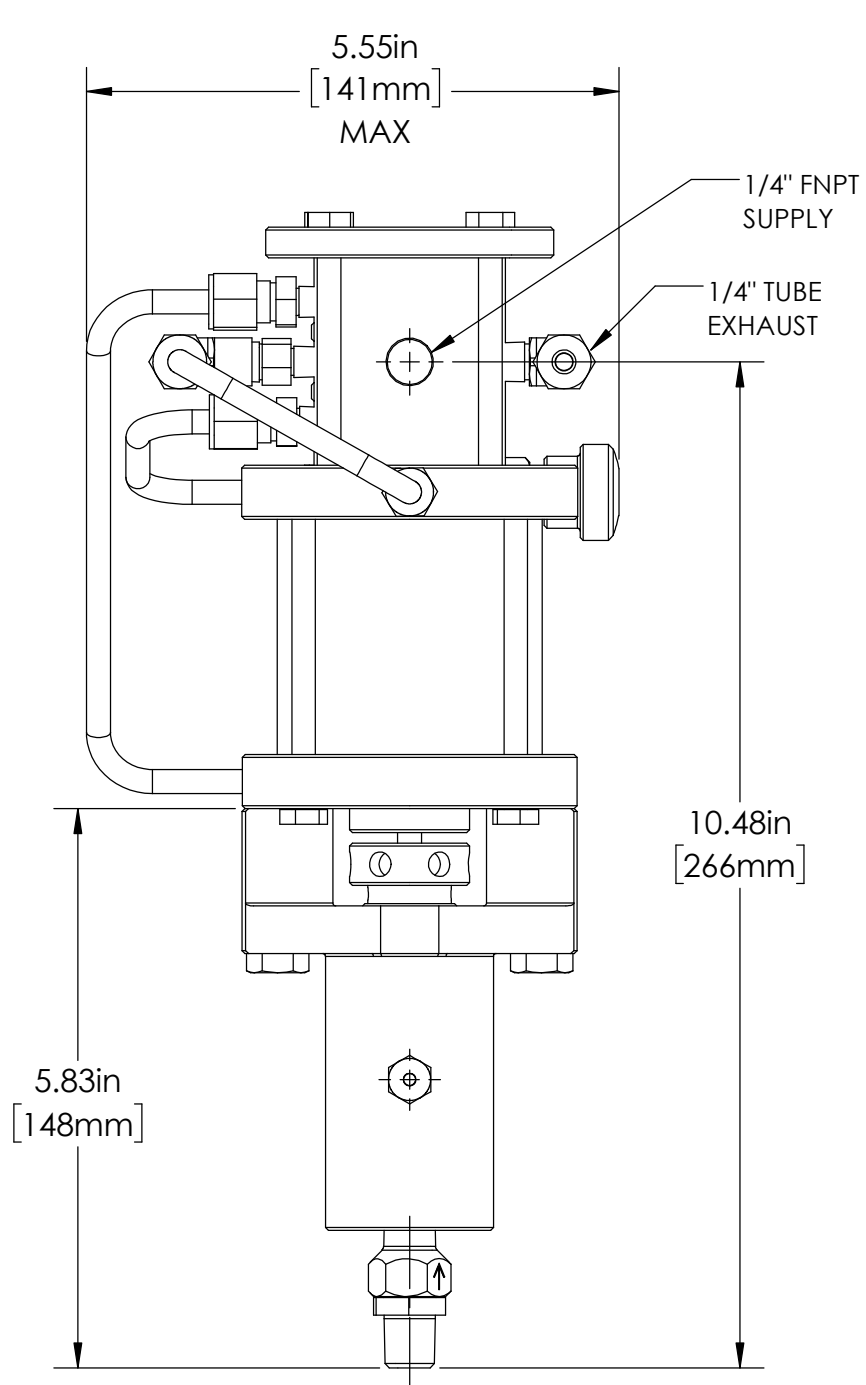
8 7 6 5 4 3 2 1

DATE	APPROVED
DEC-05-24	WRS



D
C
B
A

D
C
B
A



MARKETING DRAWING

CheckPoint
Pumps & Systems



DWG. TITLE
**3/16" MODULAR
1250-G PUMP ASSEMBLY**

REV 004 P25G16C3QLC34

SIZE
B

PROPRIETARY AND CONFIDENTIAL
THE INFORMATION CONTAINED HEREIN IS PROPRIETARY TO CHECKPOINT SYSTEMS AND SHALL NOT BE REPRODUCED OR DISCLOSED IN WHOLE OR IN PART OR USED FOR ANY PURPOSE EXCEPT WHEN SUCH USER POSSESSES DIRECT WRITTEN AUTHORIZATION FROM CHECKPOINT SYSTEMS

WEIGHT 10.84lb / 4.91kg
CPHO/PTL-SHR-295

REV. 01 EFF. DATE: 01 APR 2025

DRAWING NUMBER SHEET 1 OF 2

8 7 6 5 4 3 2 1

8

7

6

5

4

3

2

1

P25G16C3QLC34 - CERAMIC - FKM

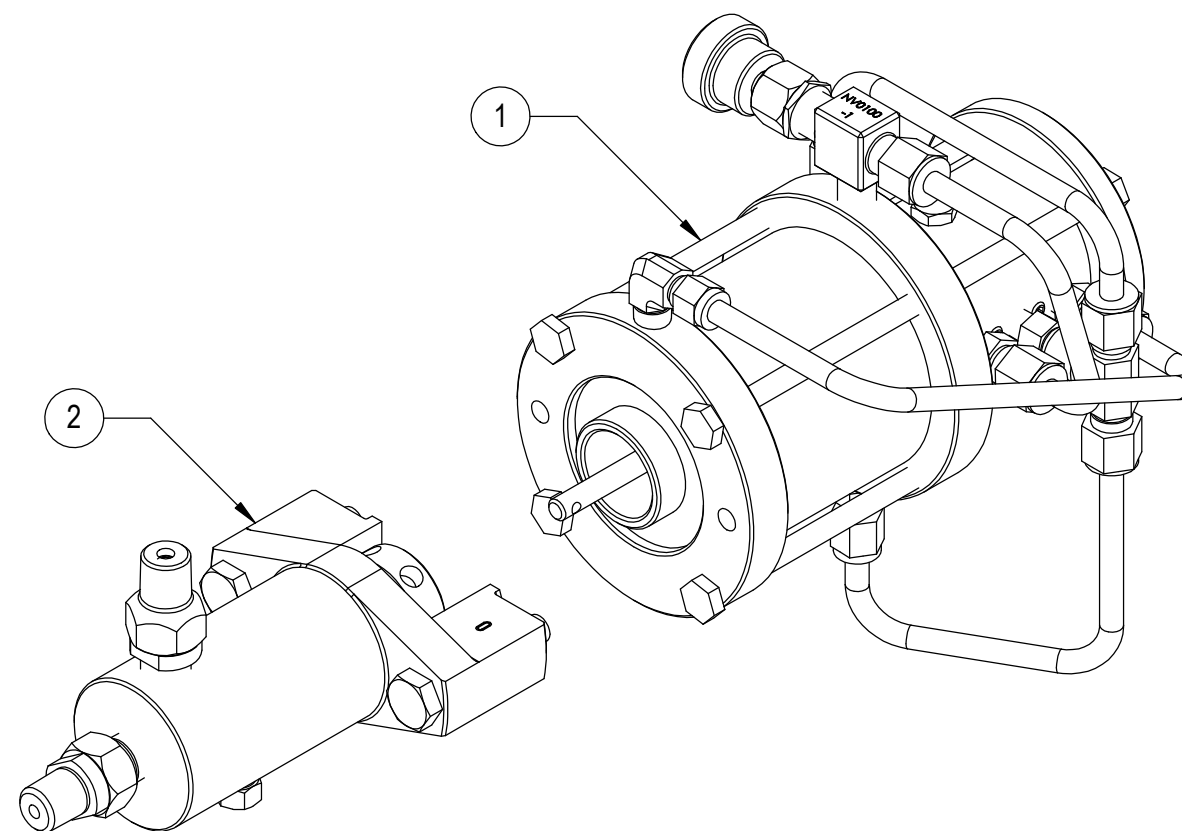
ITEM NO.	PART NUMBER	DESCRIPTION	QTY.
1	P25GXT1U	1250 MOTOR ASSY	1
2	W25M303CAQPN3Q6	WET END	1

P25G16C3HLC35 - CERAMIC - HNBR

ITEM NO.	PART NUMBER	DESCRIPTION	QTY.
1	P25GXT1U	1250 MOTOR ASSY	1
2	W25M303CAHPN3H6	WET END	1

P25G16C3FLC38 - CERAMIC - FFKM

ITEM NO.	PART NUMBER	DESCRIPTION	QTY.
1	P25GXT1U	1250 MOTOR ASSY	1
2	W25M303CAFPN3F6	WET END	1



NOTE: SERIAL NUMBER PLATE / ATTACH SCREWS NOT SHOWN

MARKETING DRAWING

CheckPoint
 Pumps & Systems

 DWG. TITLE
**3/16" MODULAR
 1250-G PUMP ASSEMBLY**

REV 004 P25G16C3QLC34

 SIZE
B

CPHQ/PTL-SHR-295

REV. 01

EFF. DATE: 01 APR 2025

 PROPRIETARY AND CONFIDENTIAL
 THE INFORMATION CONTAINED HEREIN IS PROPRIETARY TO CHECKPOINT SYSTEMS AND SHALL NOT
 BE REPRODUCED OR DISCLOSED IN WHOLE OR IN PART OR USED FOR ANY PURPOSE EXCEPT WHEN
 SUCH USER POSSESSES DIRECT WRITTEN AUTHORIZATION FROM CHECKPOINT SYSTEMS

DRAWING NUMBER

SHEET 2 OF 2

8

7

6

5

4

3

2

1