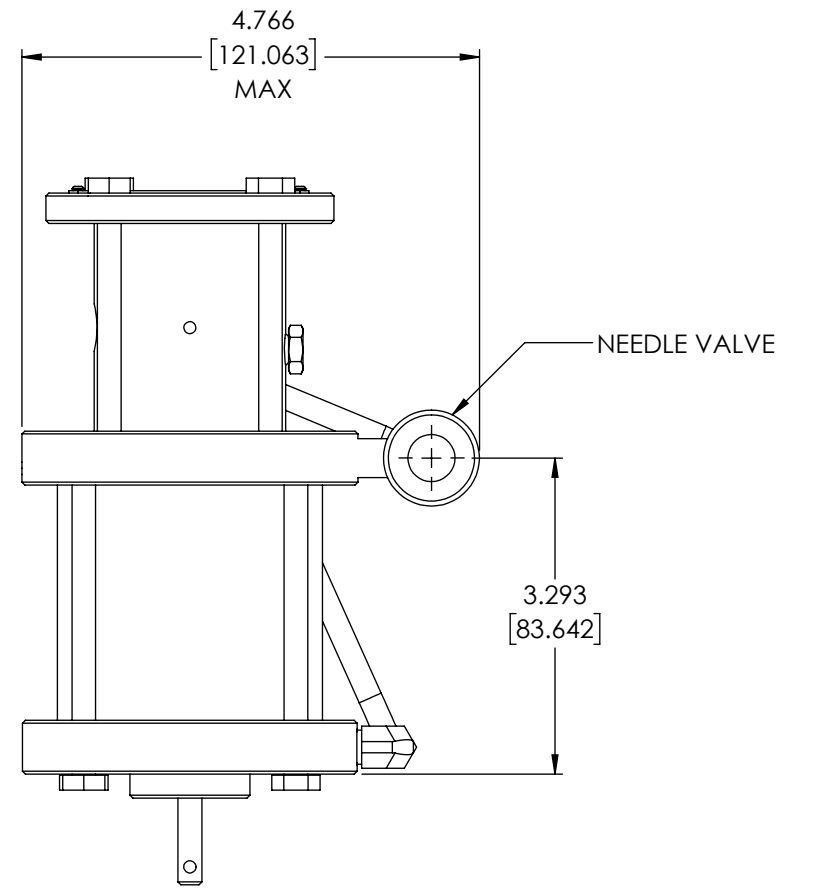
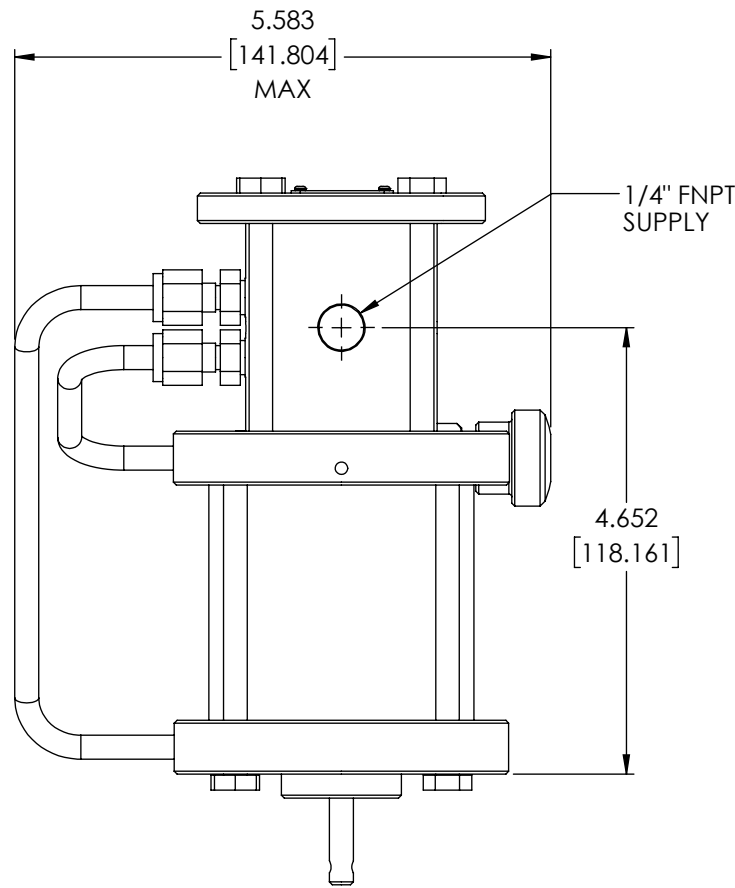
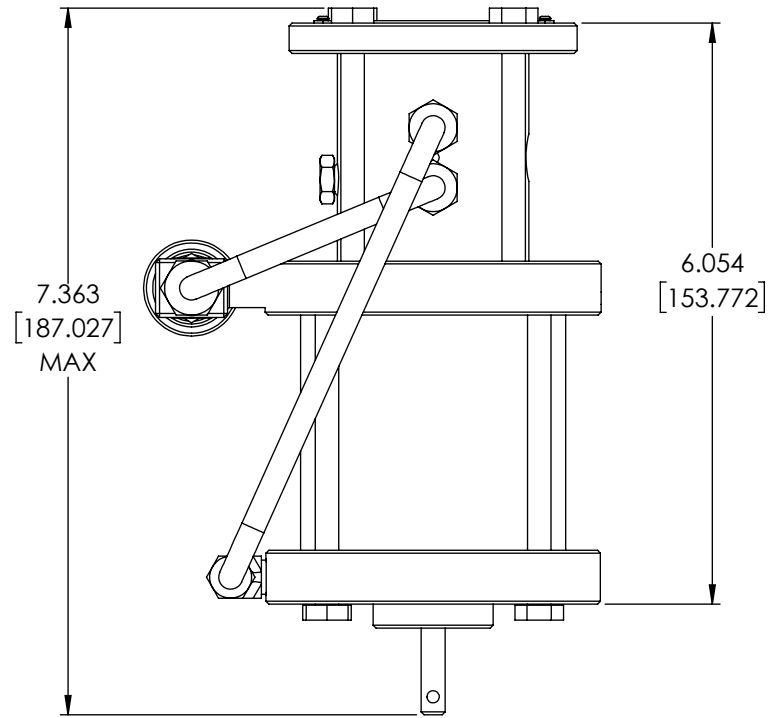
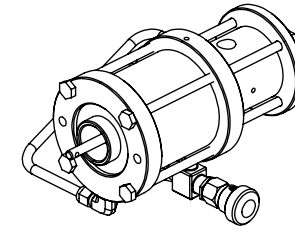


8	7
PART #	MATERIAL
P25BXT2	316 SS

1	DATE	APPROVED
	JAN-05-25	WRS



D  
C  
B  
A

D  
C  
B  
A

MARKETING DRAWING

CheckPoint  
Pumps & Systems

DWG. TITLE		REV	SIZE
1250 MOTOR ASSY B-MODEL - 316SS			
001	P25BXT2		
DRAWING NUMBER			SHEET 1 OF 3

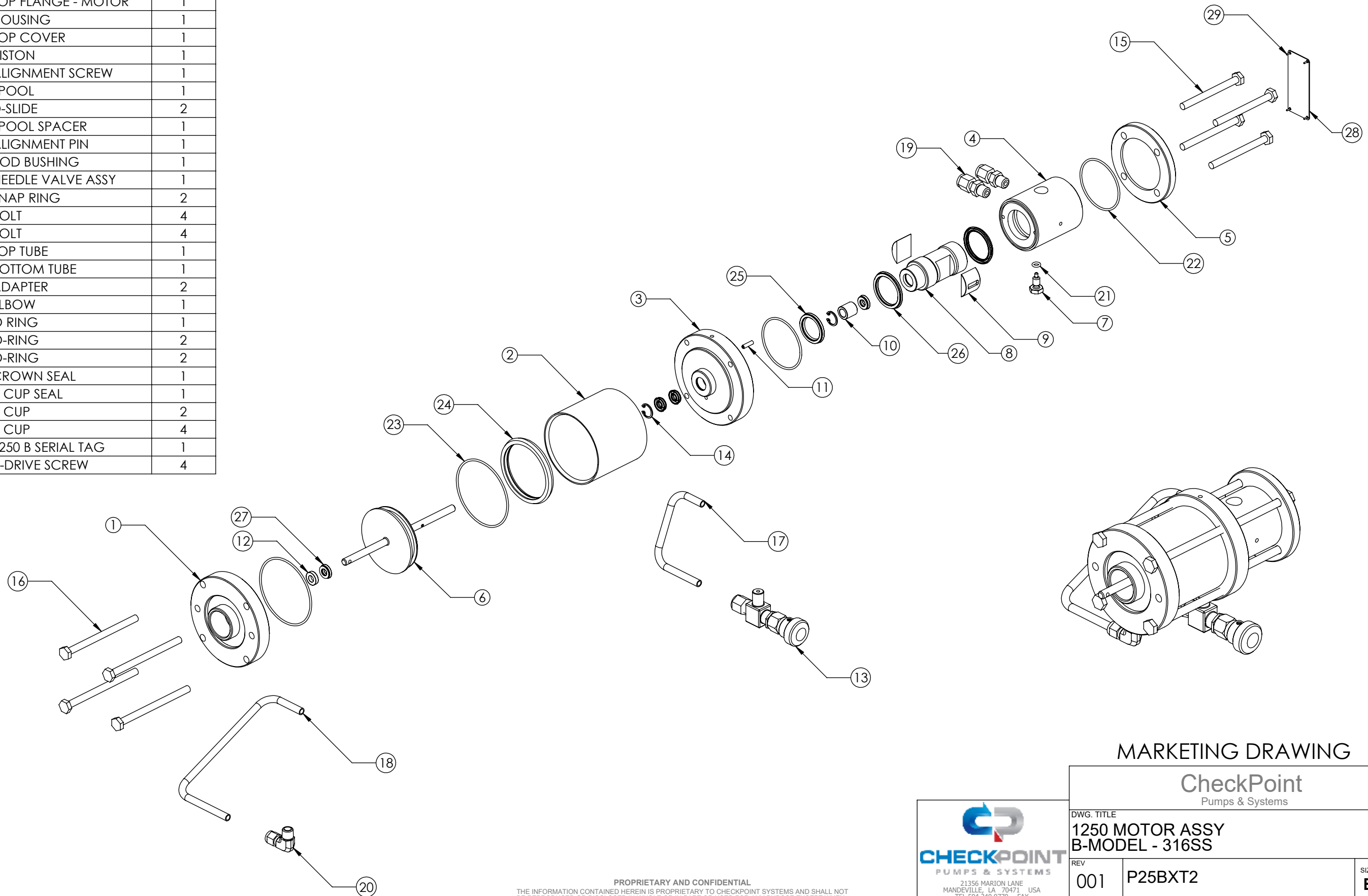


PROPRIETARY AND CONFIDENTIAL  
THE INFORMATION CONTAINED HEREIN IS PROPRIETARY TO CHECKPOINT SYSTEMS AND SHALL NOT BE REPRODUCED OR DISCLOSED IN WHOLE OR IN PART OR USED FOR ANY PURPOSE EXCEPT WHEN SUCH USER POSSESSES DIRECT WRITTEN AUTHORIZATION FROM CHECKPOINT SYSTEMS

WEIGHT	7.05 lb / 3.20 kg
--------	-------------------

8 7 6 5 4 3 2 1

ITEM NO.	PART NUMBER	DESCRIPTION	QTY.
1	PBFLGMS6156	BOTTOM FLANGE	1
2	P2520	CYLINDER - MOTOR	1
3	P2519	TOP FLANGE - MOTOR	1
4	P258	HOUSING	1
5	P2532	TOP COVER	1
6	P25PRA1SU	PISTON	1
7	P259	ALIGNMENT SCREW	1
8	P252T	SPOOL	1
9	P253T	D-SLIDE	2
10	P255	SPOOL SPACER	1
11	P2511	ALIGNMENT PIN	1
12	P2522	ROD BUSHING	1
13	NV0100-1	NEEDLE VALVE ASSY	1
14	P257	SNAP RING	2
15	P2533	BOLT	4
16	P2535	BOLT	4
17	P2541	TOP TUBE	1
18	P2542	BOTTOM TUBE	1
19	FT4MSC2N316	ADAPTER	2
20	FT4MSEL2N316	ELBOW	1
21	SELORHN-0302	O RING	1
22	SELORHN-3002	O-RING	2
23	SELORHN-4002	O-RING	2
24	P2516	CROWN SEAL	1
25	P2531	U CUP SEAL	1
26	P254	U CUP	2
27	P256	U CUP	4
28	P2550AB	1250 B SERIAL TAG	1
29	P2551	U-DRIVE SCREW	4



MARKETING DRAWING

CheckPoint  
Pumps & Systems

DWG. TITLE  
1250 MOTOR ASSY  
B-MODEL - 316SS

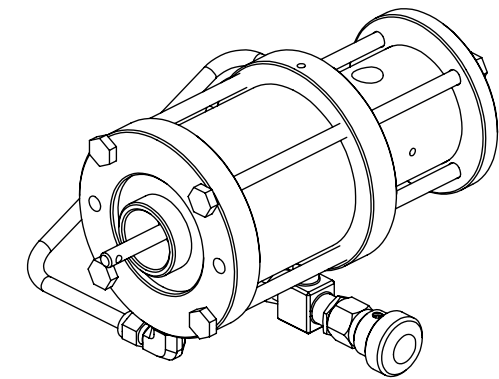
REV 001	P25BXT2	SIZE B
------------	---------	-----------



PROPRIETARY AND CONFIDENTIAL  
THE INFORMATION CONTAINED HEREIN IS PROPRIETARY TO CHECKPOINT SYSTEMS AND SHALL NOT BE REPRODUCED OR DISCLOSED IN WHOLE OR IN PART OR USED FOR ANY PURPOSE EXCEPT WHEN SUCH USER POSSESSES DIRECT WRITTEN AUTHORIZATION FROM CHECKPOINT SYSTEMS

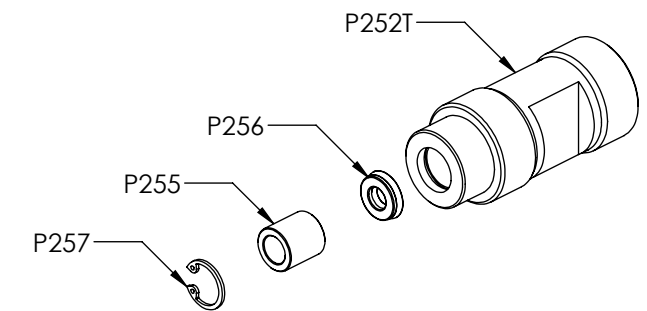
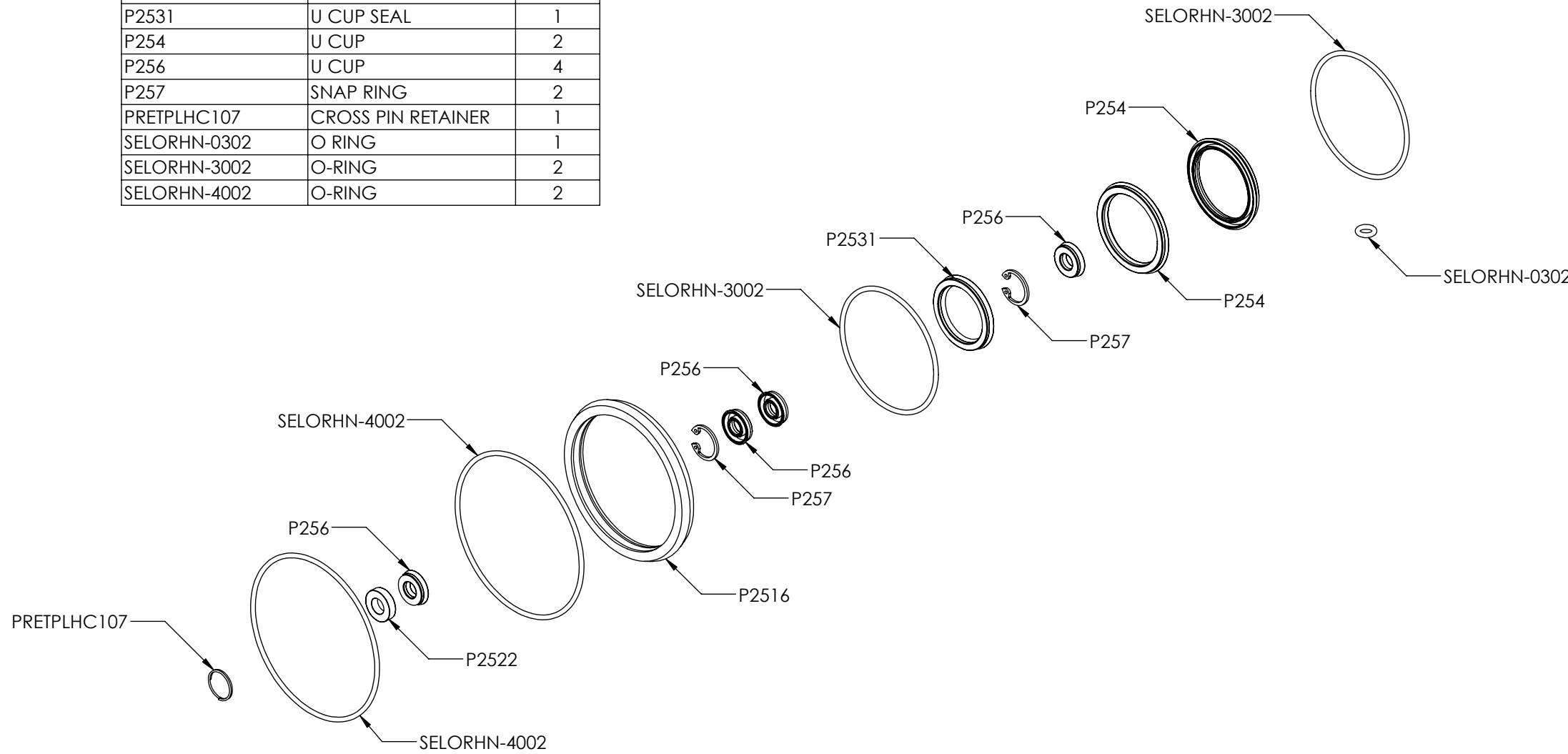
# 1250 MOTOR SEAL KIT PART # K25MRU

PART NUMBER	DESCRIPTION	QTY.
P2516	CROWN SEAL	1
P2522	ROD BUSHING	1
P2531	U CUP SEAL	1
P254	U CUP	2
P256	U CUP	4
P257	SNAP RING	2
PRETPLHC107	CROSS PIN RETAINER	1
SELORHN-0302	O RING	1
SELORHN-3002	O-RING	2
SELORHN-4002	O-RING	2



# SPOOL KIT PART # K25SPT16

PART NUMBER	DESCRIPTION	QTY.
P252T	SPOOL	1
P255	SPOOL SPACER	1
P256	U CUP	1
P257	SNAP RING	1



## MARKETING DRAWING

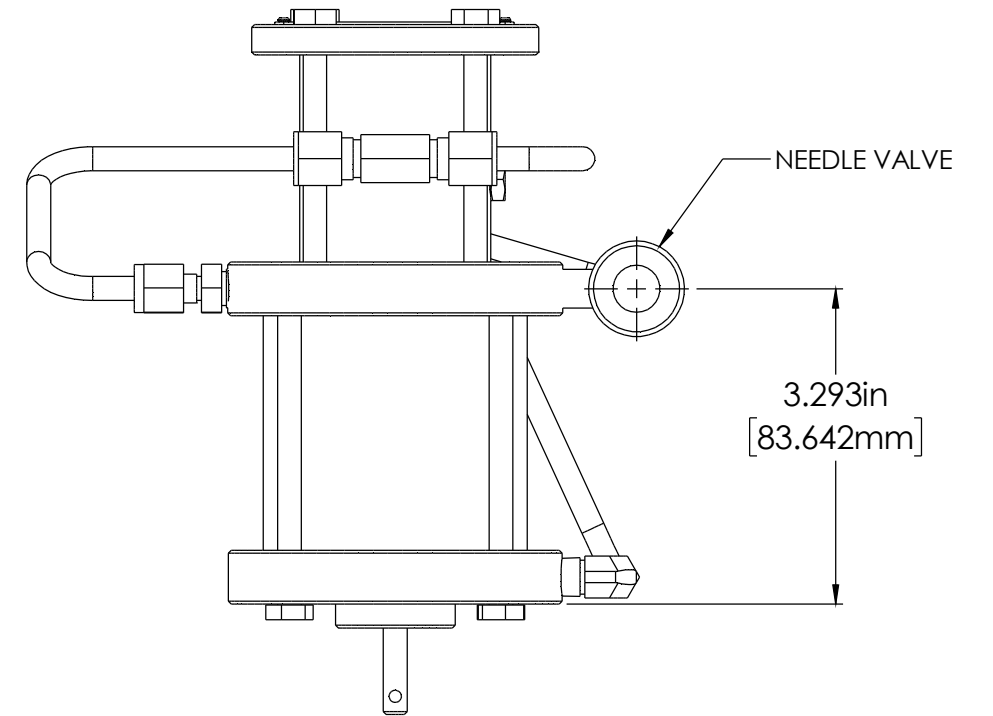
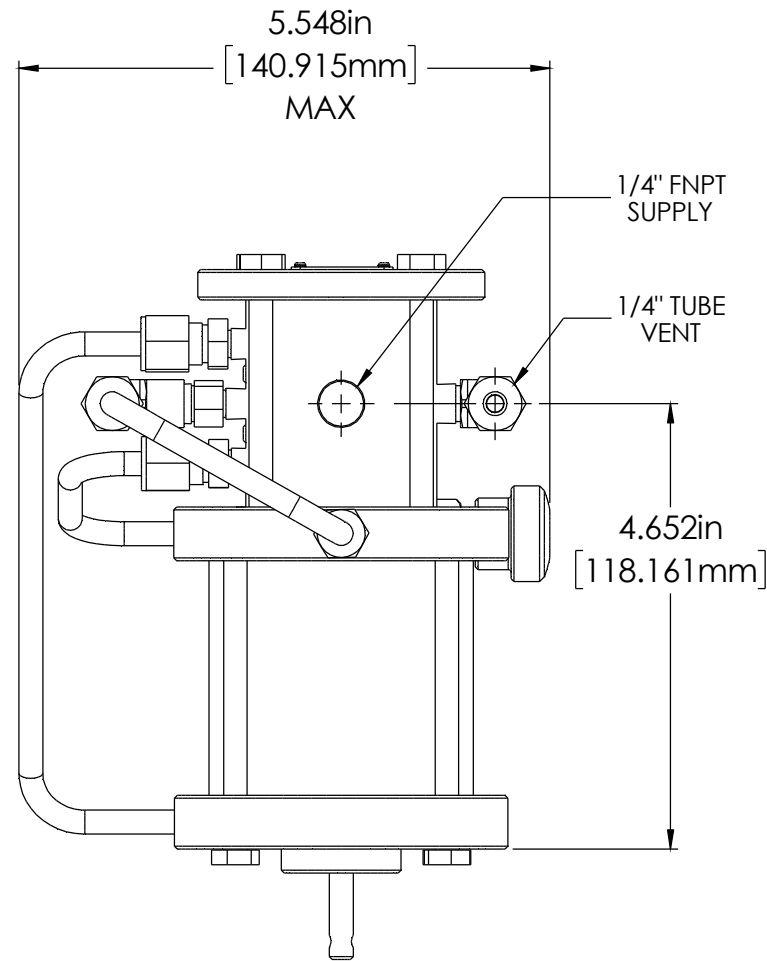
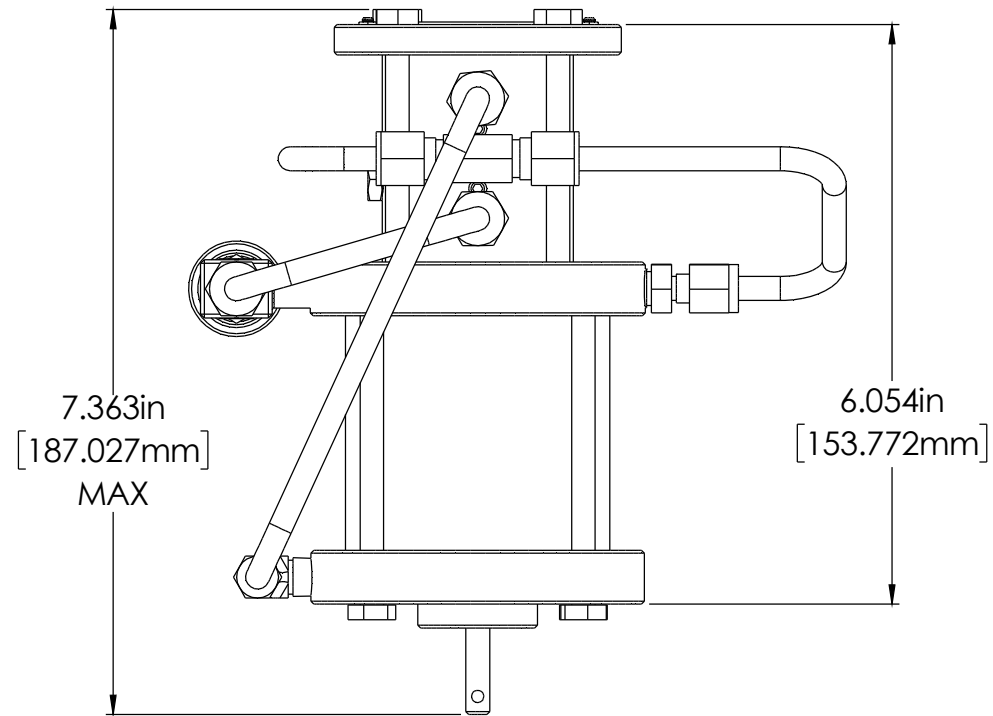
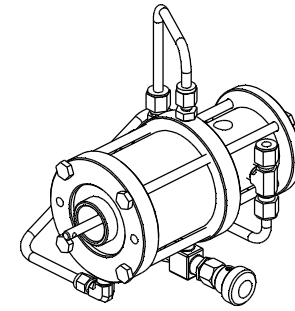
**CheckPoint**  
Pumps & Systems

DWG. TITLE <b>1250 MOTOR ASSY B-MODEL - 316SS</b>		SIZE <b>B</b>
REV <b>001</b>	<b>P25BXT2</b>	
DRAWING NUMBER		SHEET 3 OF 3



**PROPRIETARY AND CONFIDENTIAL**  
THE INFORMATION CONTAINED HEREIN IS PROPRIETARY TO CHECKPOINT SYSTEMS AND SHALL NOT BE REPRODUCED OR DISCLOSED IN WHOLE OR IN PART OR USED FOR ANY PURPOSE EXCEPT WHEN SUCH USER POSSESSES DIRECT WRITTEN AUTHORIZATION FROM CHECKPOINT SYSTEMS

PART #	MATERIAL
P25GXT2	316 SS



MARKETING DRAWING

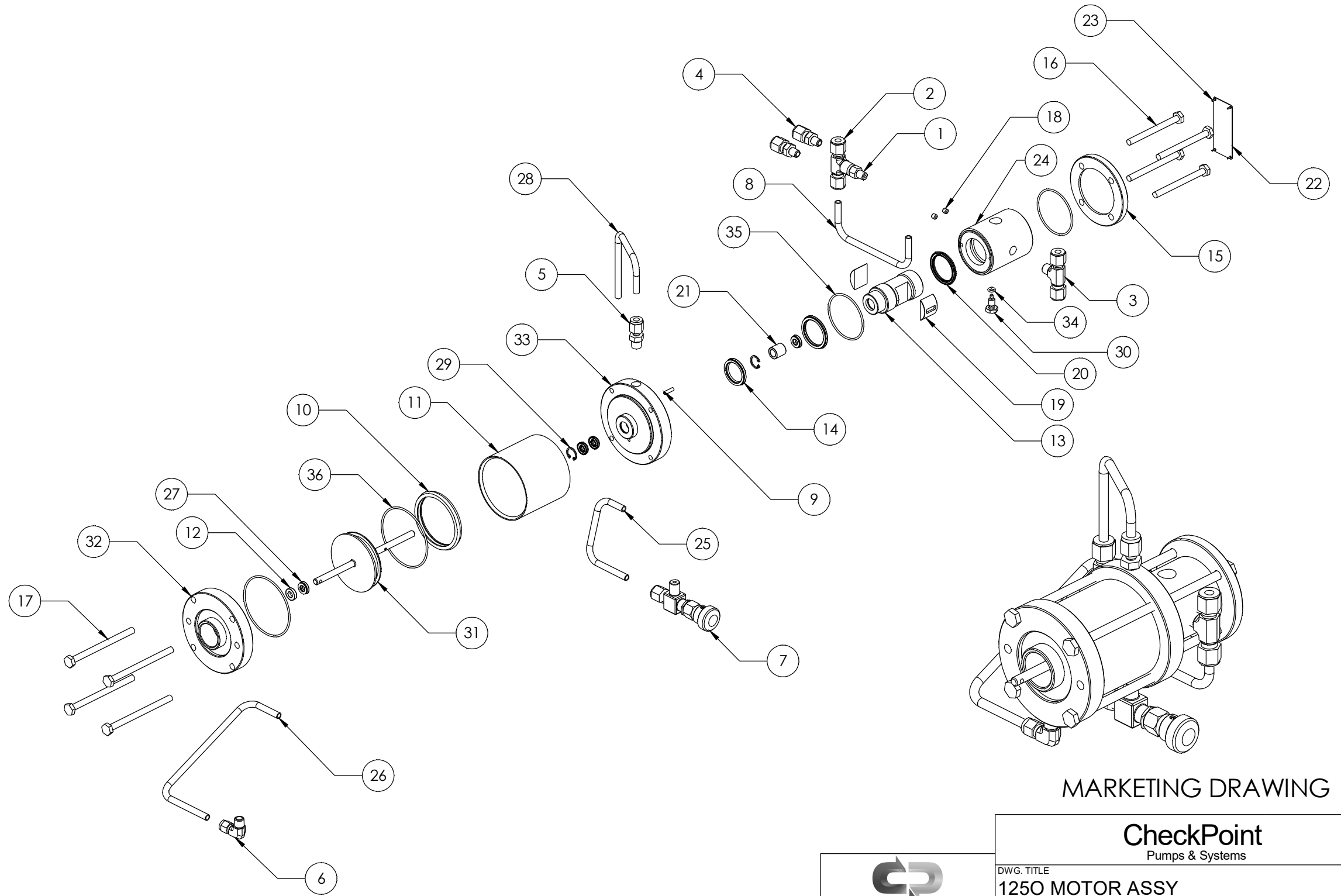
	<b>Checkpoint</b> Pumps & Systems		DWG. TITLE <b>1250 MOTOR ASSY G-MODEL - 316SS</b>
	REV <b>001</b>	P25GXT2	
21356 MARION LANE MANDEVILLE, LA 70471 USA TEL 504.340.0770 -- FAX 888.217.6402		DRAWING NUMBER	SHEET SHEET 2 OF 2 OF 3

**PROPRIETARY AND CONFIDENTIAL**

THE INFORMATION CONTAINED HEREIN IS PROPRIETARY TO CHECKPOINT SYSTEMS AND SHALL NOT BE REPRODUCED OR DISCLOSED IN WHOLE OR IN PART OR USED FOR ANY PUPOSE EXCEPT WHEN SUCH USER POSSESSES DIRECT WRITTEN AUTHORIZATION FROM CHECKPOINT SYSTEMS

WEIGHT 7.51 lb / 3.4 kg

ITEM NO.	PART NUMBER	DESCRIPTION	QTY.
1	FT21MHN316	HEX NIPPLE	1
2	FT4FBT2N316	BRANCH TEE	1
3	FT4MBT2N316	BRANCH TEE	1
4	FT4MSC1N316	CONNECTOR	2
5	FT4MSC2N316	ADAPTER	1
6	FT4MSEL2N316	ELBOW	1
7	NV0100-1	NEEDLE VALVE ASSY	1
8	P25-59	GR EXHAUST TUBE	1
9	P2511	ALIGNMENT PIN	1
10	P2516	CROWN SEAL	1
11	P2520	CYLINDER - MOTOR	1
12	P2522	ROD BUSHING	1
13	P252T	SPOOL	1
14	P2531	U CUP SEAL	1
15	P2532	TOP COVER	1
16	P2533	HH BOLT	4
17	P2535	HH BOLT	4
18	P2539	GR PLUG SCREW	2
19	P253T	D-SLIDE	2
20	P254	U CUP	2
21	P255	SPOOL SPACER	1
22	P2550AG	1250 G SERIAL TAG	1
23	P2551	U-DRIVE SCREW	4
24	P2555	HOUSING	1
25	P2557	GR TOP TUBE	1
26	P2558	GR BOTTOM TUBE	1
27	P256	U CUP	4
28	P2560	EXHAUST TUBE	1
29	P257	SNAP RING	2
30	P259	ALIGNMENT SCREW	1
31	P25PRA1SU	PISTON	1
32	PBFLGMS6156	BOTTOM FLANGE	1
33	PTFMGS6140	TOP FLANGE	1
34	SELORHN-0302	O RING	1
35	SELORHN-3002	O-RING	2
36	SELORHN-4002	O-RING	2



MARKETING DRAWING

**CheckPoint**  
Pumps & Systems

DWG. TITLE  
**1250 MOTOR ASSY  
G-MODEL - 316SS**

REV <b>001</b>	<b>P25GXT2</b>	SIZE <b>B</b>
-------------------	----------------	------------------

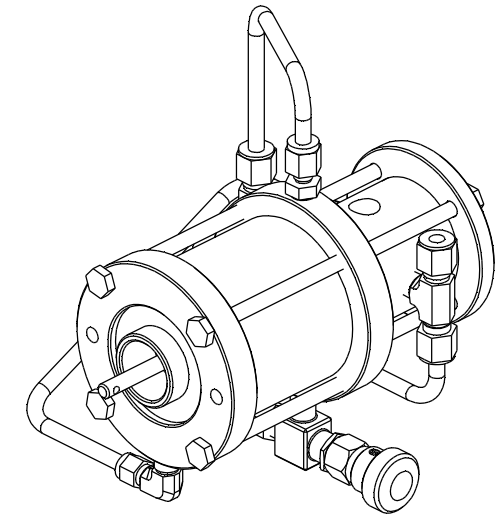


**PROPRIETARY AND CONFIDENTIAL**  
THE INFORMATION CONTAINED HEREIN IS PROPRIETARY TO CHECKPOINT SYSTEMS AND SHALL NOT BE REPRODUCED OR DISCLOSED IN WHOLE OR IN PART OR USED FOR ANY PURPOSE EXCEPT WHEN SUCH USER POSSESSES DIRECT WRITTEN AUTHORIZATION FROM CHECKPOINT SYSTEMS

DRAWING NUMBER	SHEET SHEET 2 OF 2
----------------	--------------------

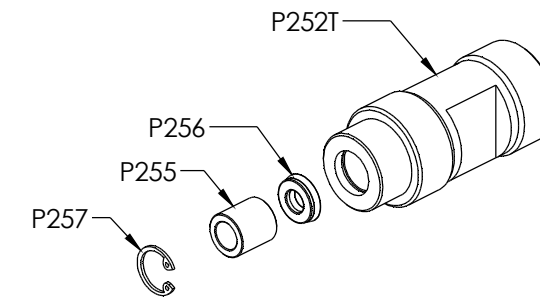
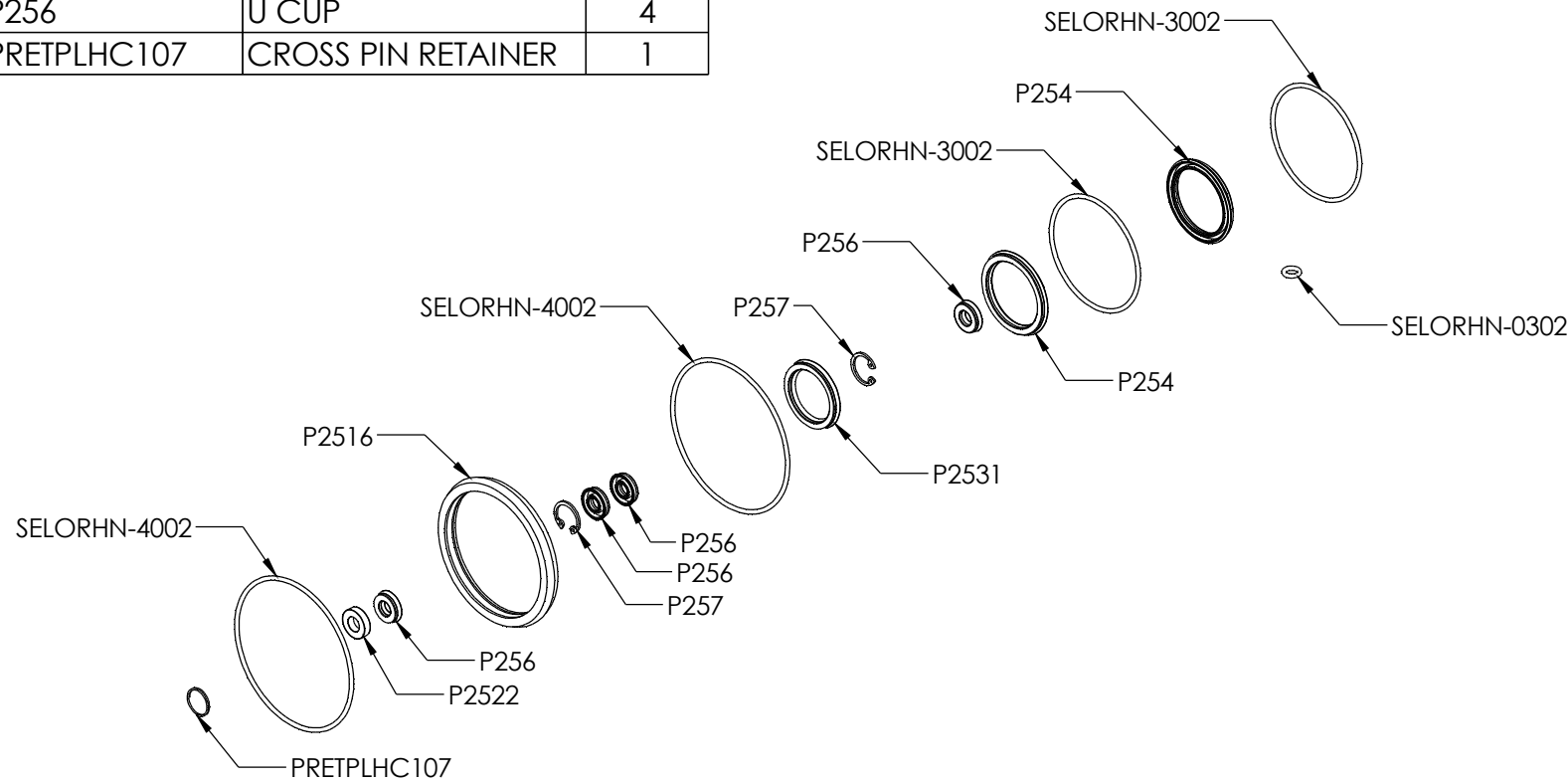
# 1250 MOTOR SEAL KIT PART# K25MRU

NUMBER	DESCRIPTION	QTY.
P2522	ROD BUSHING	1
P257	SNAP RING	2
SELORHN-0302	O RING	1
SELORHN-3002	O-RING	2
SELORHN-4002	O-RING	2
P2516	CROWN SEAL	1
P2531	U CUP SEAL	1
P254	U CUP	2
P256	U CUP	4
PRETPLHC107	CROSS PIN RETAINER	1



# SPOOL KIT PART# K25SPT16

NUMBER	DESCRIPTION	QTY.
P252T	SPOOL	1
P255	SPOOL SPACER	1
P257	SNAP RING	1
P256	U CUP	1



MARKETING DRAWING

**CheckPoint**  
Pumps & Systems

DWG. TITLE  
**1250 MOTOR ASSY  
G-MODEL - 316SS**

REV  
**001 P25GXT2**

SIZE  
**B**



**PROPRIETARY AND CONFIDENTIAL**  
THE INFORMATION CONTAINED HEREIN IS PROPRIETARY TO CHECKPOINT SYSTEMS AND SHALL NOT BE REPRODUCED OR DISCLOSED IN WHOLE OR IN PART OR USED FOR ANY PURPOSE EXCEPT WHEN SUCH USER POSSESSES DIRECT WRITTEN AUTHORIZATION FROM CHECKPOINT SYSTEMS