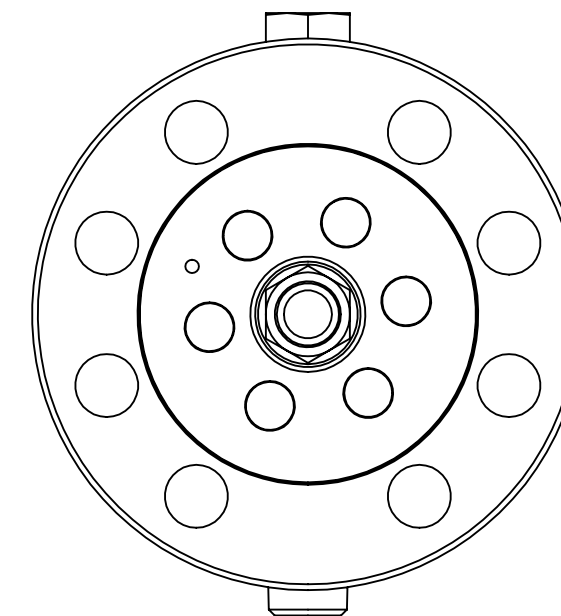
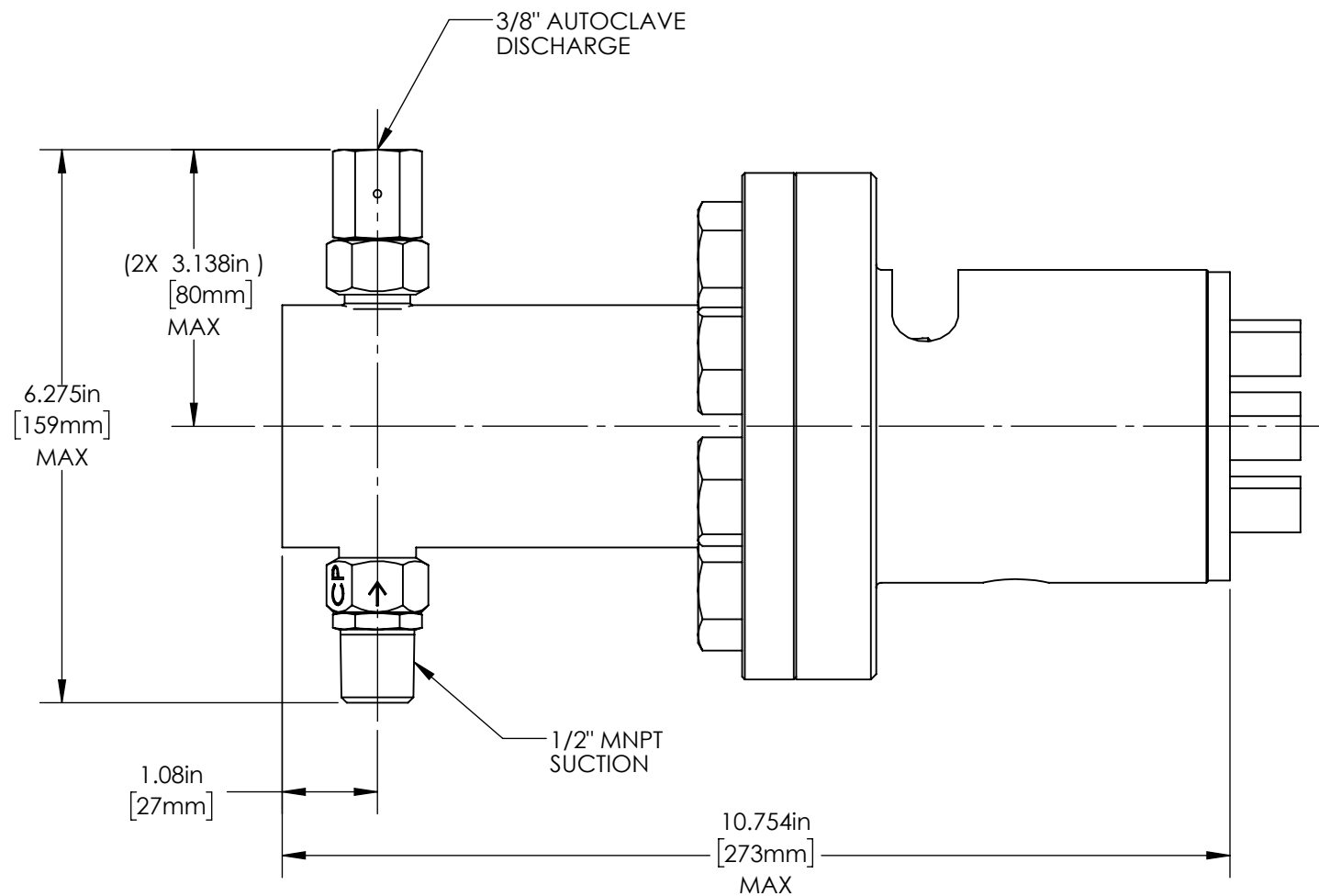
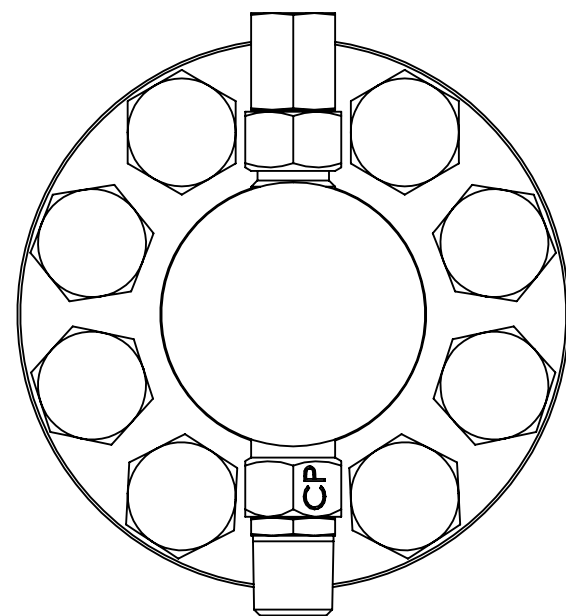
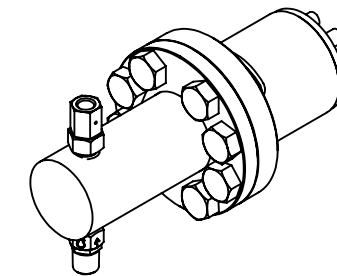




8	7	6
PART #	HEAD MATERIAL	PLUNGER MATERIAL
W58D308CNQPN3Q6	316 SS	CERAMIC

1	DATE	APPROVED
	MAR-12-25	WRS



MARKETING DRAWING

**CheckPoint**  
Pumps & Systems



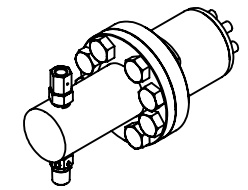
DWG. TITLE		REV	DRAWING NUMBER	SHEET 1 OF 4
P54-P84 WET END ASSY NON ADJ - 1/2" -FKM				
000	W58D308CNQPN3Q6			

WEIGHT 25.83 lb / 11.72 kg

CPHQ/PTL-SHR-365 REV. 01 EFF. DATE: 10 JUL 2025

PROPRIETARY AND CONFIDENTIAL  
THE INFORMATION CONTAINED HEREIN IS PROPRIETARY TO CHECKPOINT SYSTEMS AND SHALL NOT BE REPRODUCED OR DISCLOSED IN WHOLE OR IN PART OR USED FOR ANY PUPOSE EXCEPT WHEN SUCH USER POSSESSES DIRECT WRITTEN AUTHORIZATION FROM CHECKPOINT SYSTEMS

8	7	6	5	4	3	2	1
---	---	---	---	---	---	---	---



**W58D308CNHPN3H6**

ITEM NO.	PART NUMBER	DESCRIPTION	QTY.
1	CDA06S6H101	CHECK ASSY	1
2	CFM08S6H201	SUCTION CHECK ASSY	1
3	HHBS60813100	BOLT - GUARD CYLINDER	6
4	HHBS61210100	BOLT RETAINING FLANGE	8
5	HHJNS711116	JAM NUT	1
6	NCS08H100098	SEAL	1
7	P50GNWS608	GLAND NUT	1
8	PGCYLS6258	GUARD CYLINDER	1
9	PHEADS6108	HEAD	1
10	PPLGRHCE208	PLUNGER ROD	1
11	PRFLGHS6108	RETAINING FLANGE	1
12	SELWI-VI0803	WIPER	1

**W58D308CNFPN3F6**

ITEM NO.	PART NUMBER	DESCRIPTION	QTY.
1	CDA06S6F101	CHECK ASSY	1
2	CFM08S6F201	SUCTION CHECK ASSY	1
3	HHBS60813100	BOLT - GUARD CYLINDER	6
4	HHBS61210100	BOLT RETAINING FLANGE	8
5	HHJNS711116	JAM NUT	1
6	NCS08F100098	SEAL	1
7	P50GNWS608	GLAND NUT	1
8	PGCYLS6258	GUARD CYLINDER	1
9	PHEADS6108	HEAD	1
10	PPLGRHCE208	PLUNGER ROD	1
11	PRFLGHS6108	RETAINING FLANGE	1
12	SELWI-VI0803	WIPER	1

**W58D308CNQPN3Q6**

ITEM NO.	PART NUMBER	DESCRIPTION	QTY.
1	CDA06S6Q101	CHECK ASSY	1
2	CFM08S6Q201	SUCTION CHECK ASSY	1
3	HHBS60813100	BOLT - GUARD CYLINDER	6
4	HHBS61210100	BOLT RETAINING FLANGE	8
5	HHJNS711116	JAM NUT	1
6	NCS08Q100098	SEAL	1
7	P50GNWS608	GLAND NUT	1
8	PGCYLS6258	GUARD CYLINDER	1
9	PHEADS6108	HEAD	1
10	PPLGRHCE208	PLUNGER ROD	1
11	PRFLGHS6108	RETAINING FLANGE	1
12	SELWI-VI0803	WIPER	1

MARKETING DRAWING

**CheckPoint**  
Pumps & Systems

DWG. TITLE  
**P54-P84 WET END ASSY  
NON ADJ - 1/2" -FKM**

REV  
**000** **W58D308CNQPN3Q6**

SIZE  
**B**

DRAWING NUMBER

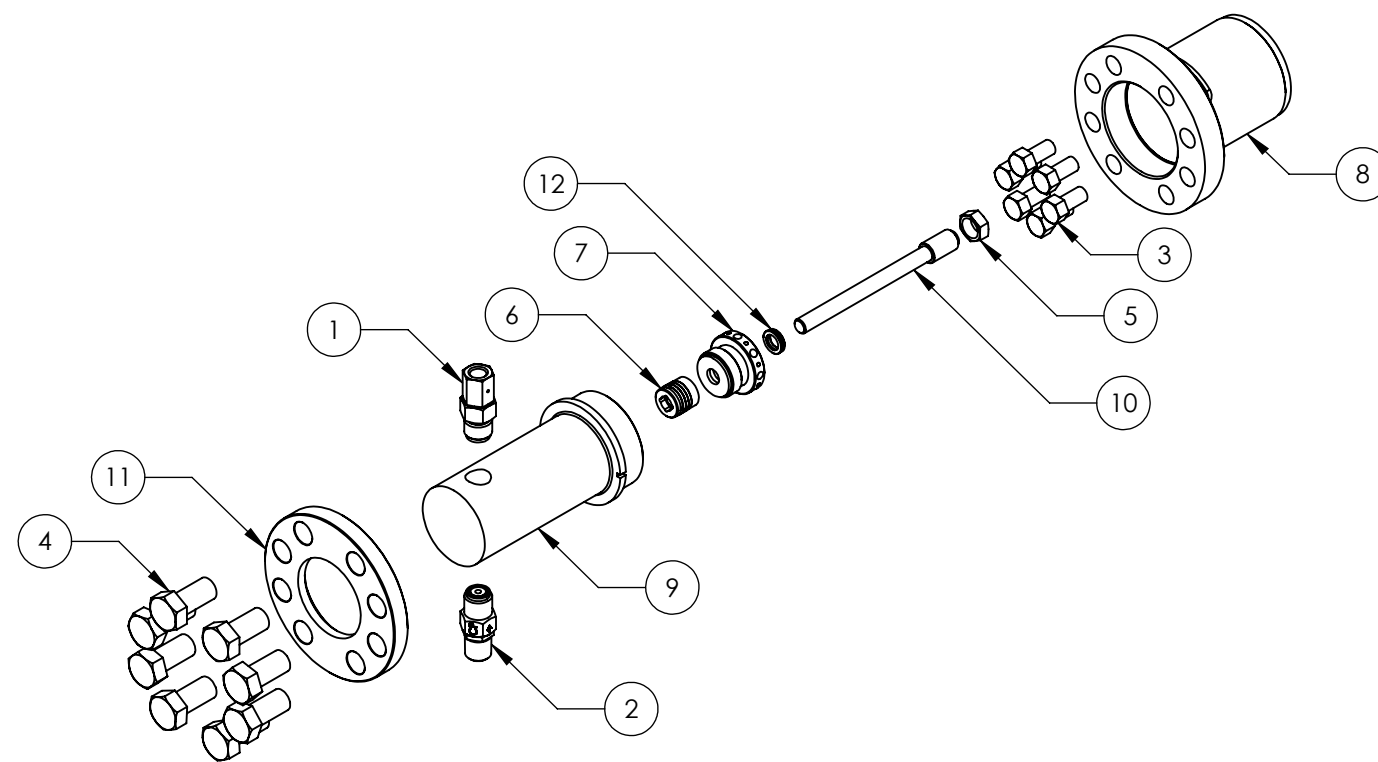
SHEET 2 OF 4



CPHQ/PTL-SHR-365 REV. 01 EFF. DATE: 10 JUL 2025

PROPRIETARY AND CONFIDENTIAL  
THE INFORMATION CONTAINED HEREIN IS PROPRIETARY TO CHECKPOINT SYSTEMS AND SHALL NOT BE REPRODUCED OR DISCLOSED IN WHOLE OR IN PART OR USED FOR ANY PURPOSE EXCEPT WHEN SUCH USER POSSESSES DIRECT WRITTEN AUTHORIZATION FROM CHECKPOINT SYSTEMS

# 54-84 WET END PARTS LIST 1/2" PLUNGER



MARKETING DRAWING

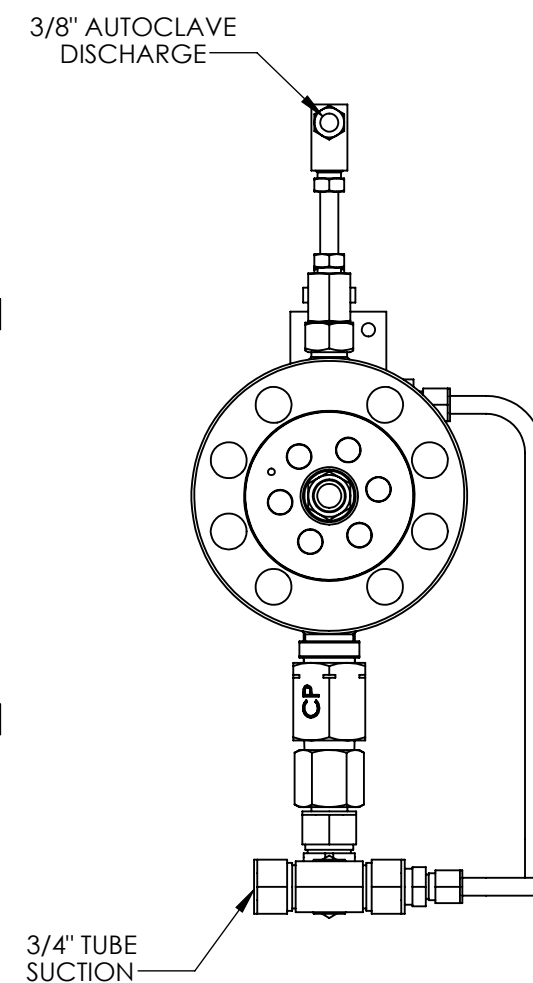
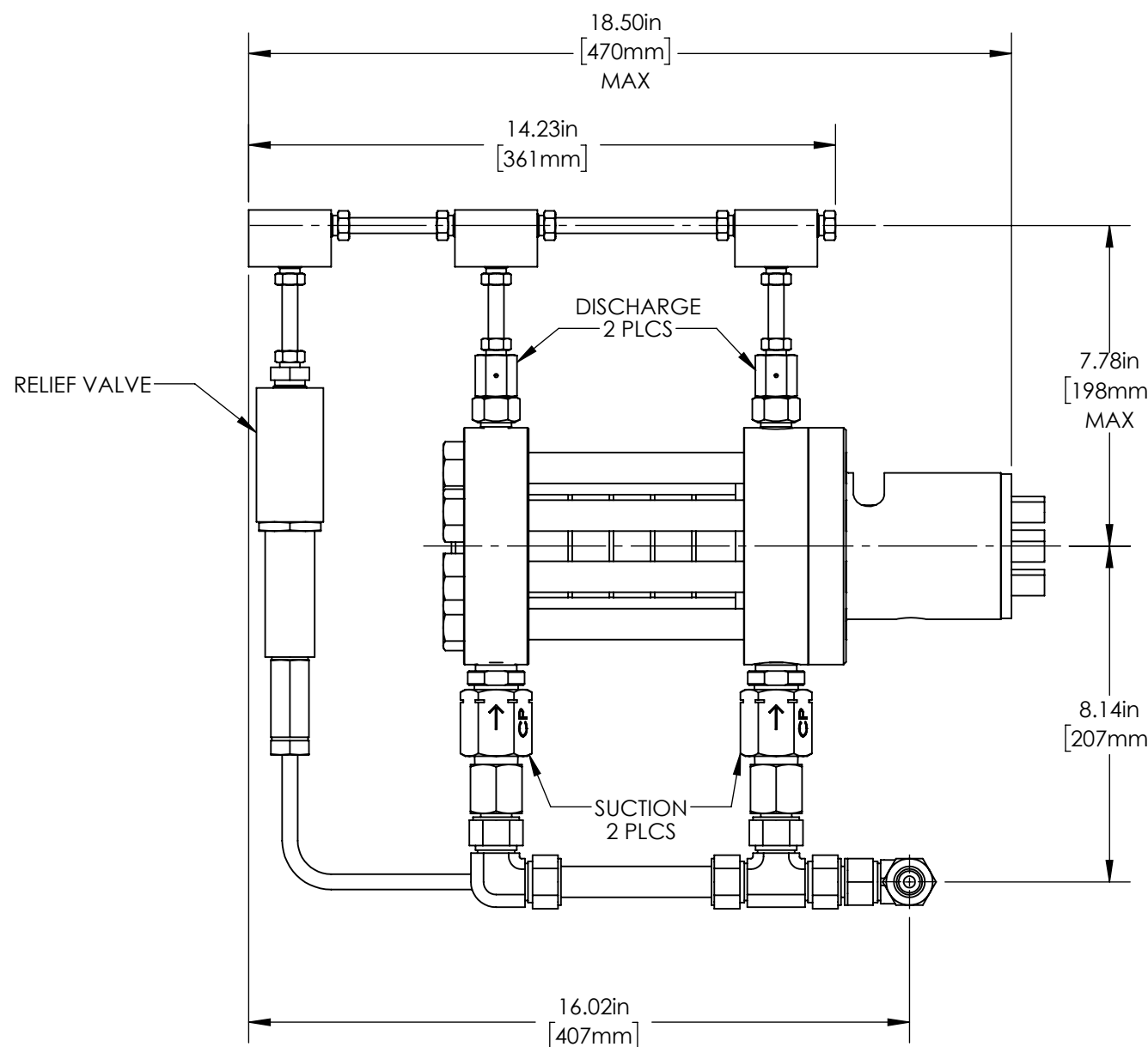
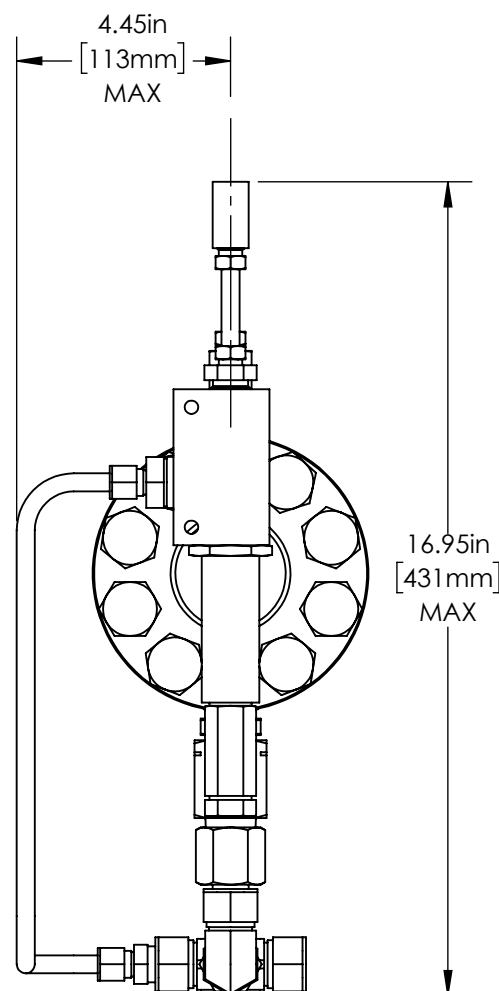
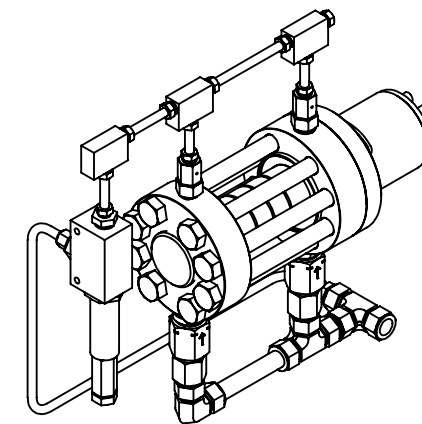
**CheckPoint**  
Pumps & Systems

DWG. TITLE		SIZE <b>B</b>
P54-P84 WET END ASSY NON ADJ - 1/2" -FKM		
REV	DRAWING NUMBER	SHEET 3 OF 4
000	W58D308CNQPN3Q6	



8	7	6	5	4	3	2	1
PART #	HEAD MATERIAL	PLUNGER MATERIAL					
W84MN12CAQPN3Q6	NITRONIC	CERAMIC					

DATE	APPROVED
MAR-11-25	JF



MARKETING DRAWING



<b>CheckPoint</b> Pumps & Systems	
DWG. TITLE <b>P84 WET END ASSY ADJ- 3/4" -FKM</b>	
REV <b>001</b>	<b>W84MN12CAQPN3Q6</b>
DRAWING NUMBER	
SHEET 1 OF 3	

WEIGHT 59.91 lb / 27.17 kg

CPHQ/PTL-SHR-365 REV. 01 EFF. DATE: 10 JUL 2025

PROPRIETARY AND CONFIDENTIAL  
THE INFORMATION CONTAINED HEREIN IS PROPRIETARY TO CHECKPOINT SYSTEMS AND SHALL NOT BE REPRODUCED OR DISCLOSED IN WHOLE OR IN PART OR USED FOR ANY PURPOSE EXCEPT WHEN SUCH USER POSSESSES DIRECT WRITTEN AUTHORIZATION FROM CHECKPOINT SYSTEMS

**W84MN12CAHPN3H6**

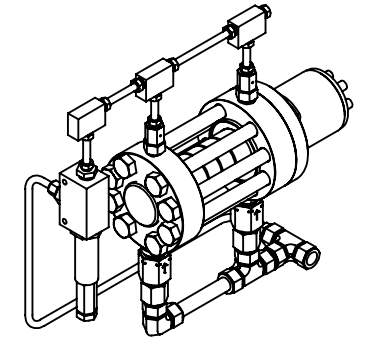
ITEM NO.	NUMBER	DESCRIPTION	QTY.
1	CDA06S6H101	CHECK ASSY	2
2	CSM12S6H101-010	SUCTION CHECK	2
3	FT12EE12316	3/4" TUBE ELBOW	1
4	FT12ET12316	3/4" TUBE TEE	2
5	FT12FA12N316	ADAPTER	2
6	FT12PC12316	PORT CONNECTOR	1
7	FT12TUR6316	REDUCER	1
8	FT20M96K6316	ADAPTER	1
9	FT6MSC12N316	CONNECTOR	1
10	FTCCLX60316	GLAND COLLAR - AC	2
11	FTCLX6600316	ELBOW - AC	1
12	FTCNX6603316	3" NIPPLE - AC	4
13	FTCTX6660316	TEE - AC	2
14	FTCGLX60316	GLAND NUT - AC	3
15	FTMS06X983316	3/8" MEDIUM PRESSURE AC TUBE	1
16	HHBS60813100	BOLT - GUARD CYLINDER	6
17	HHBS6112100927	BOLT - HEAD	8
18	HHJNS711116	JAM NUT	1
19	HHNS60624	HEX JAM NUT	1
20	HLWS6106	WASHER	1
21	OPTS112H	OPTIRING	1
22	PBFLGHS6258-1	BOTTOM FLANGE - HEAD	1
23	PCYLHNS112	CYLINDER HEAD	1
24	PGCYLS6258	GUARD CYLINDER	1
25	PPBODHN5112	PISTON BODY	1
26	PPCAPHN5112	PISTON CAP	1
27	PPLGRHCE310	PLUNGER ROD	1
28	PPNS6108	PACKING NUT	1
29	PTFLGHS6258	TOP FLANGE - HEAD	1
30	RV-20RVS9072	AC RELIEF VALVE	1
31	SELORHN-3303	O-RING	2
32	ST35S606	3/8" TUBE	1
33	ST65S612S	3/4" TUBE	1
34	V50500HLC	PACKING	1

**W84MN12CAFPN3F6**

ITEM NO.	PART NUMBER	DESCRIPTION	QTY.
1	CDA06S6F101	CHECK ASSY	2
2	CSM12S6F101-010	SUCTION CHECK	2
3	FT12EE12316	3/4" TUBE ELBOW	1
4	FT12ET12316	3/4" TUBE TEE	2
5	FT12FA12N316	ADAPTER	2
6	FT12PC12316	PORT CONNECTOR	1
7	FT12TUR6316	REDUCER	1
8	FT20M96K6316	ADAPTER	1
9	FT6MSC12N316	CONNECTOR	1
10	FTCCLX60316	GLAND COLLAR - AC	2
11	FTCLX6600316	ELBOW - AC	1
12	FTCNX6603316	3" NIPPLE - AC	4
13	FTCTX6660316	TEE - AC	2
14	FTCGLX60316	GLAND NUT - AC	3
15	FTMS06X983316	3/8" MEDIUM PRESSURE AC TUBE	1
16	HHBS60813100	BOLT - GUARD CYLINDER	6
17	HHBS6112100927	BOLT - HEAD	8
18	HHJNS711116	JAM NUT	1
19	HHNS60624	HEX JAM NUT	1
20	HLWS6106	WASHER	1
21	OPTS112F	OPTIRING	1
22	PBFLGHS6258-1	BOTTOM FLANGE - HEAD	1
23	PCYLHNS112	CYLINDER HEAD	1
24	PGCYLS6258	GUARD CYLINDER	1
25	PPBODHN5112	PISTON BODY	1
26	PPCAPHN5112	PISTON CAP	1
27	PPLGRHCE310	PLUNGER ROD	1
28	PPNS6108	PACKING NUT	1
29	PTFLGHS6258	TOP FLANGE - HEAD	1
30	RV-20RVS9072	AC RELIEF VALVE	1
31	SELORFK-3303	O-RING	2
32	ST65S612S	3/4" TUBE	1
33	ST35S606S	3/8" TUBE	1
34	V50500FLC	PACKING	1

**W84MN12CAQPN3Q6**

ITEM NO.	PART NUMBER	DESCRIPTION	QTY.
1	CDA06S6Q101	CHECK ASSY	2
2	CSM12S6Q101-010	SUCTION CHECK	2
3	FT12EE12316	3/4" TUBE ELBOW	1
4	FT12ET12316	3/4" TUBE TEE	2
5	FT12FA12N316	ADAPTER	2
6	FT12PC12316	PORT CONNECTOR	1
7	FT12TUR6316	REDUCER	1
8	FT20M96K6316	ADAPTER	1
9	FT6MSC12N316	CONNECTOR	1
10	FTCCLX60316	GLAND COLLAR - AC	2
11	FTCLX6600316	ELBOW - AC	1
12	FTCNX6603316	3" NIPPLE - AC	4
13	FTCTX6660316	TEE - AC	2
14	FTCGLX60316	GLAND NUT - AC	3
15	FTMS06X983316	3/8" MEDIUM PRESSURE AC TUBE	1
16	HHBS60813100	BOLT - GUARD CYLINDER	6
17	HHBS6112100927	BOLT - HEAD	8
18	HHJNS711116	JAM NUT	1
19	HHNS60624	HEX JAM NUT	1
20	HLWS6106	WASHER	1
21	OPTS112Q	OPTIRING	1
22	PBFLGHS6258-1	BOTTOM FLANGE - HEAD	1
23	PCYLHNS112	CYLINDER HEAD	1
24	PGCYLS6258	GUARD CYLINDER	1
25	PPBODHN5112	PISTON BODY	1
26	PPCAPHN5112	PISTON CAP	1
27	PPLGRHCE310	PLUNGER ROD	1
28	PPNS6108	PACKING NUT	1
29	PTFLGHS6258	TOP FLANGE - HEAD	1
30	RV-20RVS9072	AC RELIEF VALVE	1
31	SELORPF-3303	O-RING	2
32	ST65S612S	3/4" TUBE	1
33	ST35S606S	3/8" TUBE	1
34	V50500QLC	PACKING	1



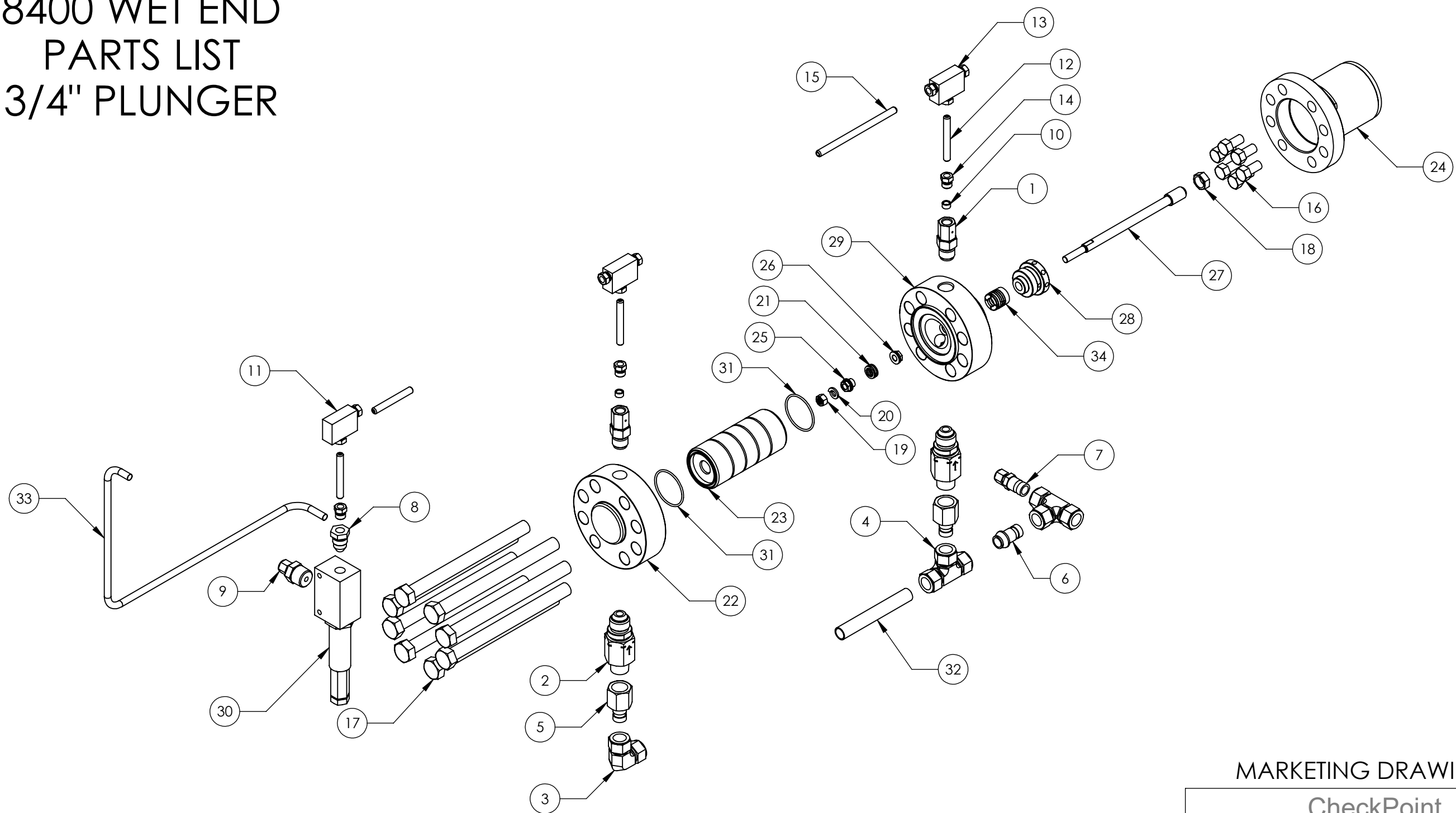
**MARKETING DRAWING**

**CheckPoint**  
Pumps & Systems

DWG. TITLE		SIZE
P84 WET END ASSY ADJ- 3/4" -FKM		
REV	DRAWING NUMBER	SHEET 2 OF 3
001	W84MN12CAQPN3Q6	B



# 8400 WET END PARTS LIST 3/4" PLUNGER



MARKETING DRAWING

**CheckPoint**  
Pumps & Systems

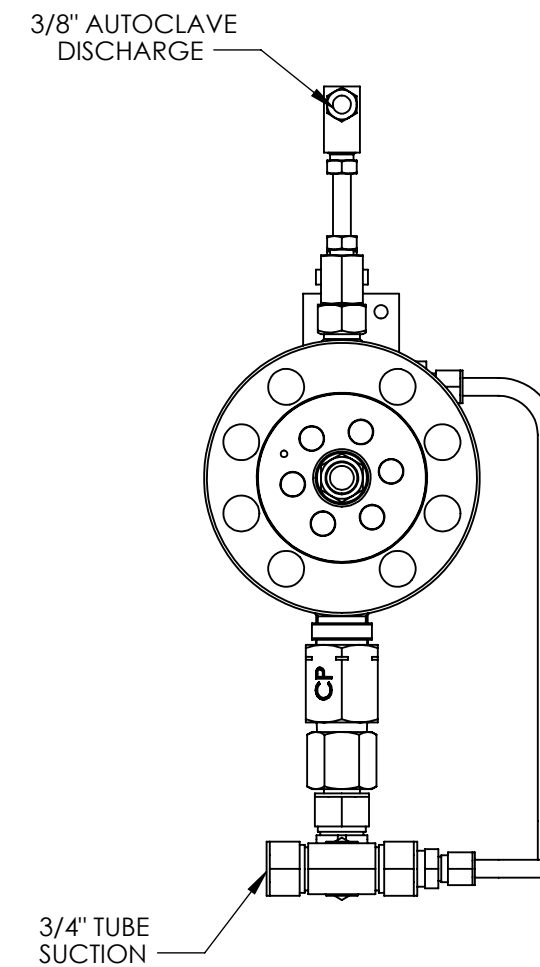
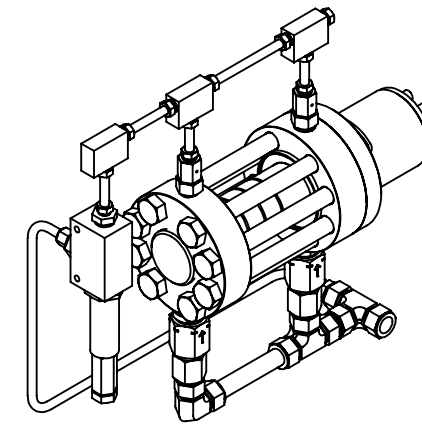
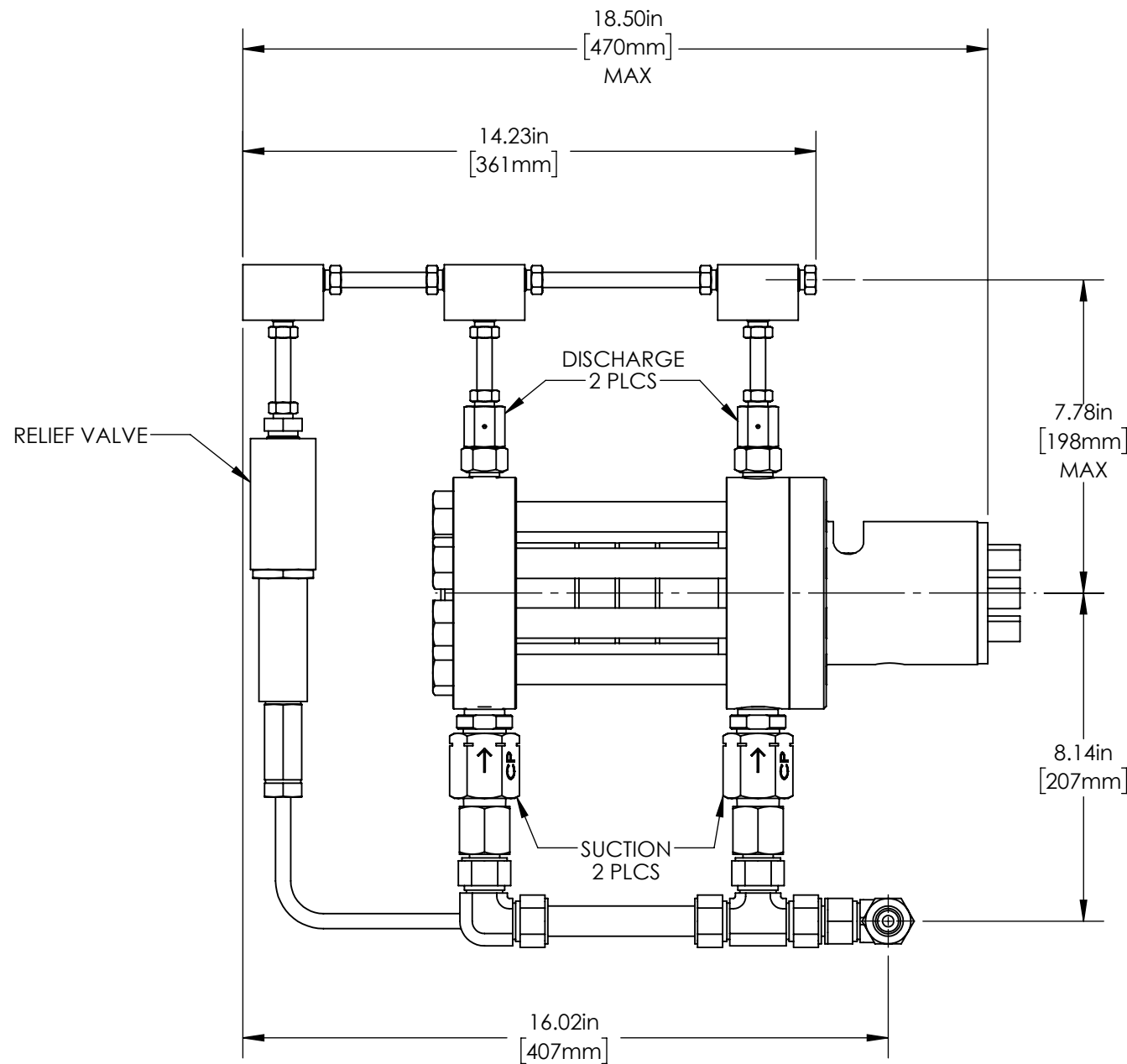
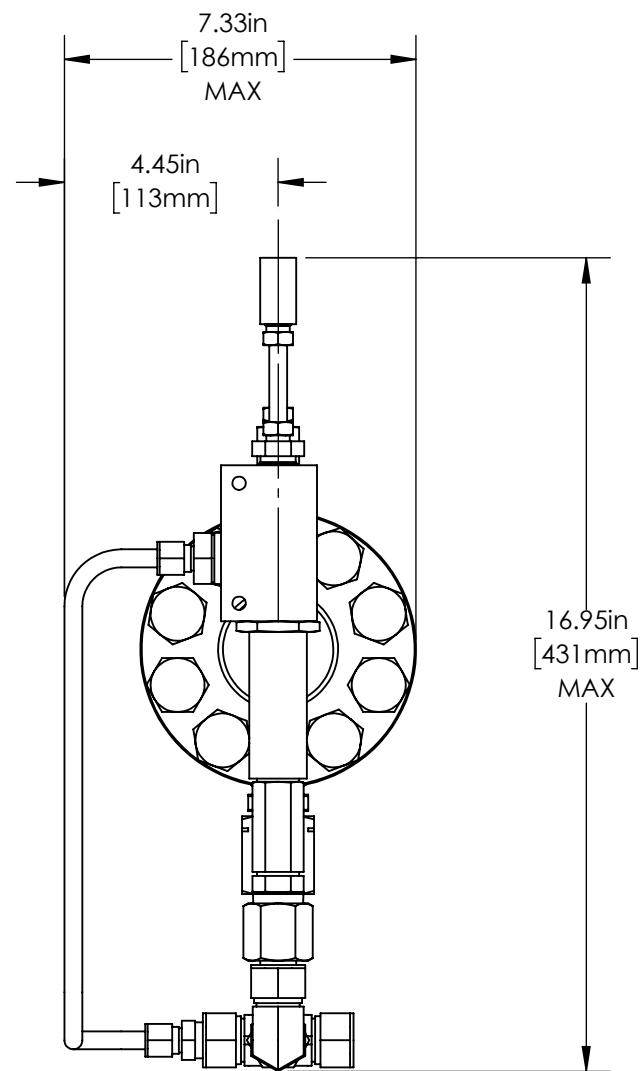
DWG. TITLE		SIZE
P84 WET END ASSY ADJ- 3/4" -FKM		<b>B</b>
REV	DRAWING NUMBER	SHEET 3 OF 3
001	W84MN12CAQPN3Q6	



PROPRIETARY AND CONFIDENTIAL  
THE INFORMATION CONTAINED HEREIN IS PROPRIETARY TO CHECKPOINT SYSTEMS AND SHALL NOT BE REPRODUCED OR DISCLOSED IN WHOLE OR IN PART OR USED FOR ANY PURPOSE EXCEPT WHEN SUCH USER POSSESSES DIRECT WRITTEN AUTHORIZATION FROM CHECKPOINT SYSTEMS

8	7	6	5	4	3	2	1
PART #	HEAD MATERIAL	PLUNGER MATERIAL					
W84MN16CAQPN3Q6	NITRONIC	CERAMIC					

DATE	APPROVED
MAR-11-25	JF



MARKETING DRAWING

CheckPoint  
Pumps & Systems

DWG. TITLE  
P84 WET END ASSY  
ADJ - 1" - FKM

REV 001 W84MN16CAQPN3Q6

SIZE  
B



PROPRIETARY AND CONFIDENTIAL  
THE INFORMATION CONTAINED HEREIN IS PROPRIETARY TO CHECKPOINT SYSTEMS AND SHALL NOT BE REPRODUCED OR DISCLOSED IN WHOLE OR IN PART OR USED FOR ANY PURPOSE EXCEPT WHEN SUCH USER POSSESSES DIRECT WRITTEN AUTHORIZATION FROM CHECKPOINT SYSTEMS

WEIGHT 59.68 lb / 27.07 kg

CPHQ/PTL-SHR-365 REV. 01 EFF. DATE: 10 JUL 2025

DRAWING NUMBER SHEET 1 OF 3

8

7

6

5

4

3

2

1

**W84MN16CAHPN3H6**

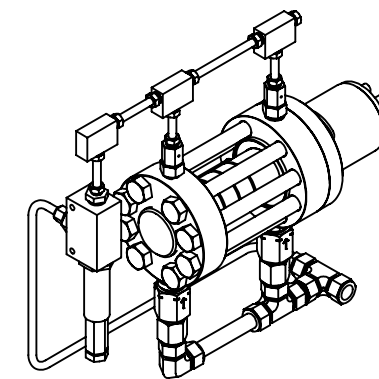
ITEM NO.	PART NUMBER	DESCRIPTION	QTY.
1	CDA06S6H101	CHECK ASSY	2
2	CSM12S6H101-010	SUCTION CHECK	2
3	FT12EE12316	3/4" TUBE ELBOW	1
4	FT12ET12316	3/4" TUBE TEE	2
5	FT12FA12N316	ADAPTER	2
6	FT12PC12316	PORT CONNECTOR	1
7	FT12TUR6316	REDUCER	1
8	FT20M96K6316	ADAPTER	1
9	FT6MSC12N316	CONNECTOR	1
10	FTCCLX60316	GLAND COLLAR - AC	2
11	FTCLX6600316	ELBOW - AC	1
12	FTCNX6603316	3" NIPPLE - AC	4
13	FTCTX6660316	TEE - AC	2
14	FTCGLX60316	GLAND NUT - AC	3
15	FTMS06X983316	3/8" MEDIUM PRESSURE AC TUBE	1
16	HHBS60813100	BOLT - GUARD CYLINDER	6
17	HHBS6112100927	BOLT - HEAD	8
18	HHJNS711116	JAM NUT	1
19	HHNS60820	JAM NUT - PLUNGER	1
20	NLWS6108	1/2" Nord Lock Washer	1
21	OPTS116H	OPTIRING	1
22	PBFLGHS6258-1	BOTTOM FLANGE - HEAD	1
23	PCYLHNS116	CYLINDER HEAD	1
24	PGCYLS6258	GUARD CYLINDER	1
25	PPBODHN5116	PISTON BODY - HEAD	1
26	PPCAPHN5116	PISTON CAP	1
27	PPLGRHCE210	PLUNGER ROD - HEAD	1
28	PPNS6110	PACKING NUT	1
29	PTFLGHS6258	TOP FLANGE - HEAD	1
30	RV-20RVS9072	AC RELIEF VALVE	1
31	SELORHN-3303	O-RING	2
32	ST65S612S	3/4" TUBE	1
33	ST35S606S	3/8" TUBE	1
34	V50635HLC	PACKING	1

**W84MN16CAFPN3F6**

ITEM NO.	PART NUMBER	DESCRIPTION	QTY.
1	CDA06S6F101	CHECK ASSY	2
2	CSM12S6F101-010	SUCTION CHECK	2
3	FT12EE12316	3/4" TUBE ELBOW	1
4	FT12ET12316	3/4" TUBE TEE	2
5	FT12FA12N316	ADAPTER	2
6	FT12PC12316	PORT CONNECTOR	1
7	FT12TUR6316	REDUCER	1
8	FT20M96K6316	ADAPTER	1
9	FT6MSC12N316	CONNECTOR	1
10	FTCCLX60316	GLAND COLLAR - AC	2
11	FTCLX6600316	ELBOW - AC	1
12	FTCNX6603316	3" NIPPLE - AC	4
13	FTCTX6660316	TEE - AC	2
14	FTCGLX60316	GLAND NUT - AC	3
15	FTMS06X983316	3/8" MEDIUM PRESSURE AC TUBE	1
16	HHBS60813100	BOLT - GUARD CYLINDER	6
17	HHBS6112100927	BOLT - HEAD	8
18	HHJNS711116	JAM NUT	1
19	HHNS60820	JAM NUT - PLUNGER	1
20	NLWS6108	1/2" Nord Lock Washer	1
21	OPTS116F	OPTIRING	1
22	PBFLGHS6258-1	BOTTOM FLANGE - HEAD	1
23	PCYLHNS116	CYLINDER HEAD	1
24	PGCYLS6258	GUARD CYLINDER	1
25	PPBODHN5116	PISTON BODY - HEAD	1
26	PPCAPHN5116	PISTON CAP	1
27	PPLGRHCE210	PLUNGER ROD - HEAD	1
28	PPNS6110	PACKING NUT	1
29	PTFLGHS6258	TOP FLANGE - HEAD	1
30	RV-20RVS9072	AC RELIEF VALVE	1
31	SELORFK-3303	O-RING	2
32	ST65S612S	3/4" TUBE	1
33	ST35S606S	3/8" TUBE	1
34	V50635FLC	PACKING	1

**W84MN16CAQPN3Q6**

ITEM NO.	PART NUMBER	DESCRIPTION	QTY.
1	CDA06S6Q101	CHECK ASSY	2
2	CSM12S6Q101-010	SUCTION CHECK	2
3	FT12EE12316	3/4" TUBE ELBOW	1
4	FT12ET12316	3/4" TUBE TEE	2
5	FT12FA12N316	ADAPTER	2
6	FT12PC12316	PORT CONNECTOR	1
7	FT12TUR6316	REDUCER	1
8	FT20M96K6316	ADAPTER	1
9	FT6MSC12N316	CONNECTOR	1
10	FTCCLX60316	GLAND COLLAR - AC	2
11	FTCLX6600316	ELBOW - AC	1
12	FTCNX6603316	3" NIPPLE - AC	4
13	FTCTX6660316	TEE - AC	2
14	FTCGLX60316	GLAND NUT - AC	3
15	FTMS06X983316	3/8" MEDIUM PRESSURE AC TUBE	1
16	HHBS60813100	BOLT - GUARD CYLINDER	6
17	HHBS6112100927	BOLT - HEAD	8
18	HHJNS711116	JAM NUT	1
19	HHNS60820	JAM NUT - PLUNGER	1
20	NLWS6108	1/2" Nord Lock Washer	1
21	OPTS116Q	OPTIRING	1
22	PBFLGHS6258-1	BOTTOM FLANGE - HEAD	1
23	PCYLHNS116	CYLINDER HEAD	1
24	PGCYLS6258	GUARD CYLINDER	1
25	PPBODHN5116	PISTON BODY - HEAD	1
26	PPCAPHN5116	PISTON CAP	1
27	PPLGRHCE210	PLUNGER ROD - HEAD	1
28	PPNS6110	PACKING NUT	1
29	PTFLGHS6258	TOP FLANGE - HEAD	1
30	RV-20RVS9072	AC RELIEF VALVE	1
31	SELORPF-3303	O-RING	2
32	ST65S612S	3/4" TUBE	1
33	ST35S606S	3/8" TUBE	1
34	V50635QLC	PACKING	1

**MARKETING DRAWING**

**CheckPoint**  
Pumps & Systems

DWG. TITLE

**P84 WET END ASSY  
ADJ - 1" - FKM**

REV  
**001****W84MN16CAQPN3Q6**SIZE  
**B**

DRAWING NUMBER

SHEET 2 OF 3



PROPRIETARY AND CONFIDENTIAL

THE INFORMATION CONTAINED HEREIN IS PROPRIETARY TO CHECKPOINT SYSTEMS AND SHALL NOT BE REPRODUCED OR DISCLOSED IN WHOLE OR IN PART OR USED FOR ANY PURPOSE EXCEPT WHEN SUCH USER POSSESSES DIRECT WRITTEN AUTHORIZATION FROM CHECKPOINT SYSTEMS

CPHQ/PTL-SHR-365

REV. 01

EFF. DATE: 10 JUL 2025

8

7

6

5

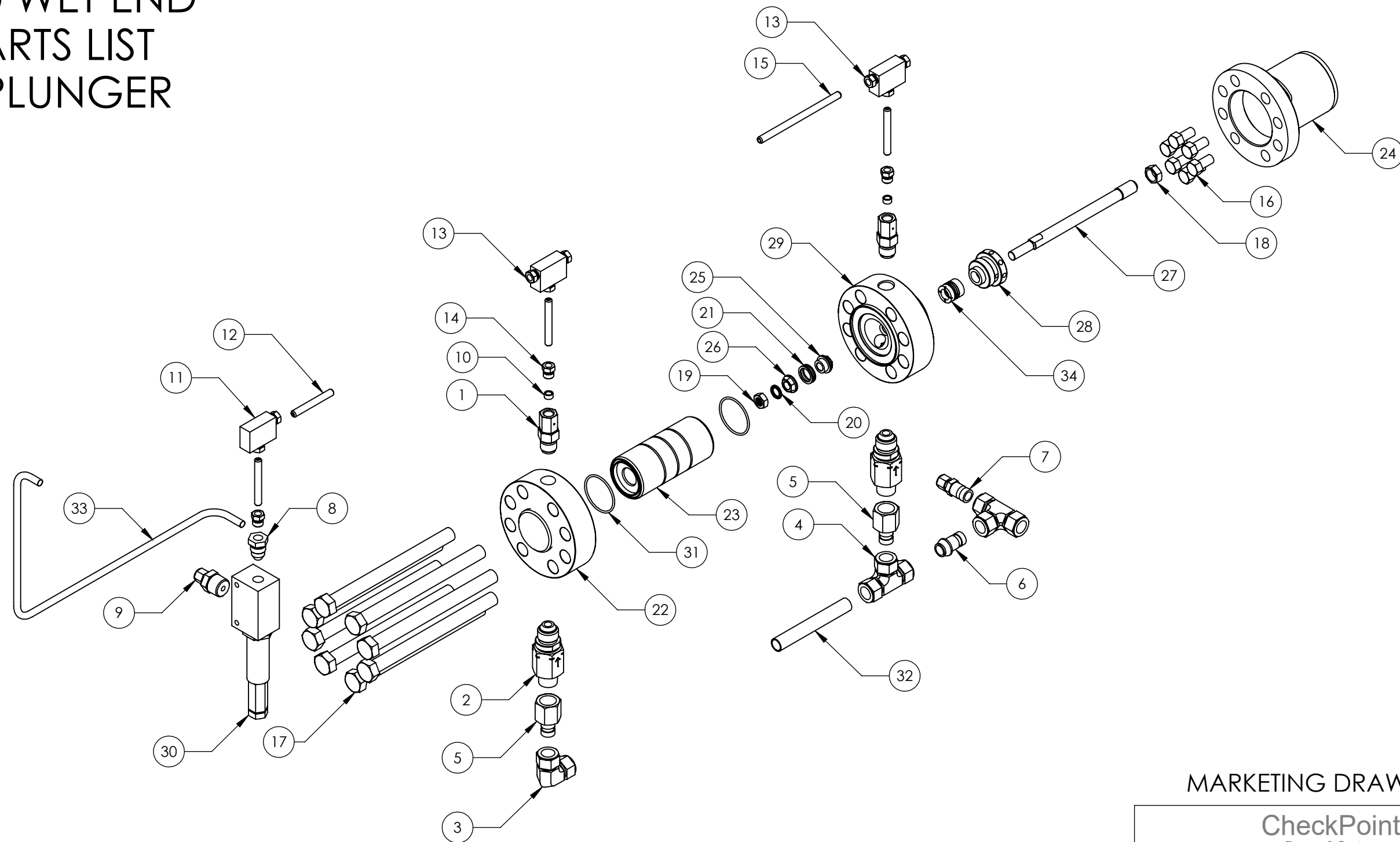
4

3

2

1

# 8400 WET END PARTS LIST 1" PLUNGER



MARKETING DRAWING

**CheckPoint**  
Pumps & Systems

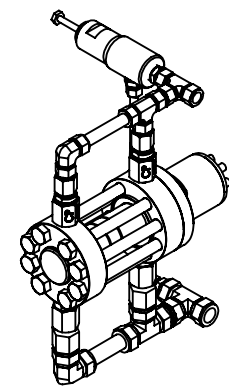
DWG. TITLE		SIZE <b>B</b>
P84 WET END ASSY ADJ - 1" - FKM		
REV	DRAWING NUMBER	SHEET 3 OF 3
001	W84MN16CAQPN3Q6	



**PROPRIETARY AND CONFIDENTIAL**  
 THE INFORMATION CONTAINED HEREIN IS PROPRIETARY TO CHECKPOINT SYSTEMS AND SHALL NOT BE REPRODUCED OR DISCLOSED IN WHOLE OR IN PART OR USED FOR ANY PURPOSE EXCEPT WHEN SUCH USER POSSESSES DIRECT WRITTEN AUTHORIZATION FROM CHECKPOINT SYSTEMS

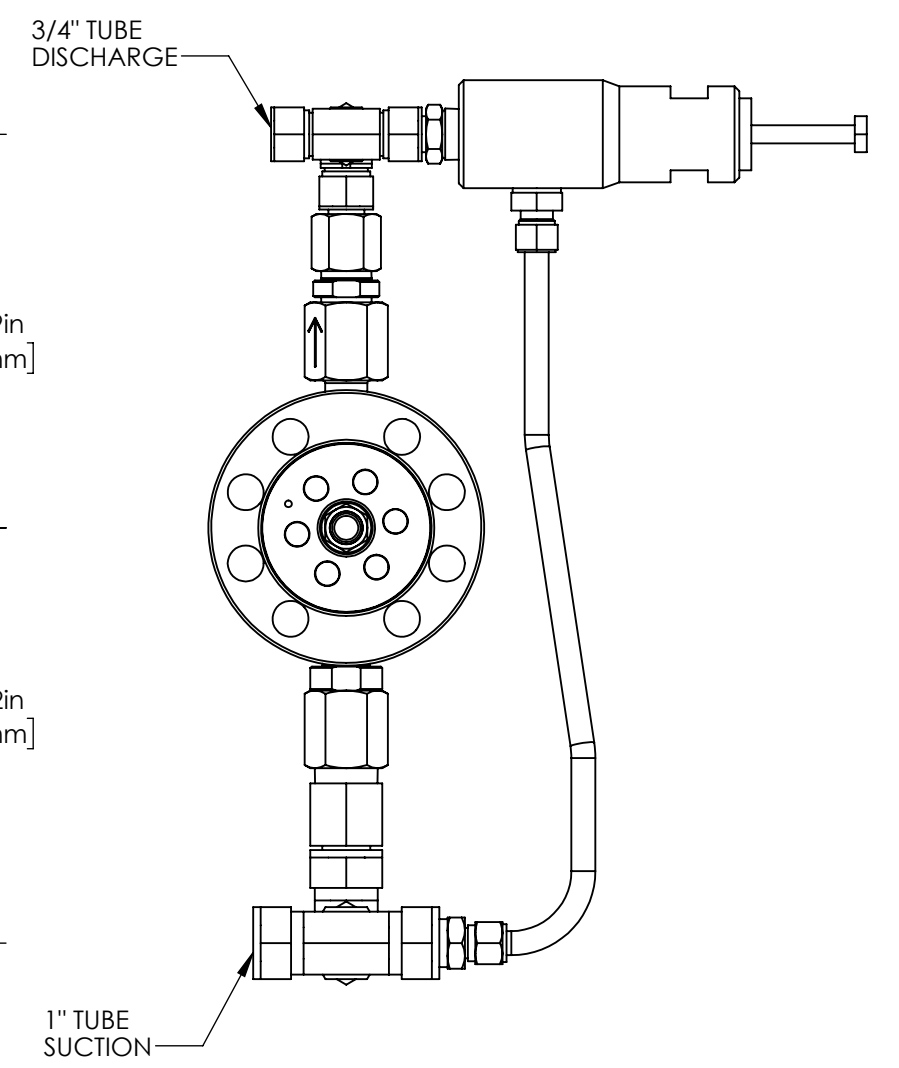
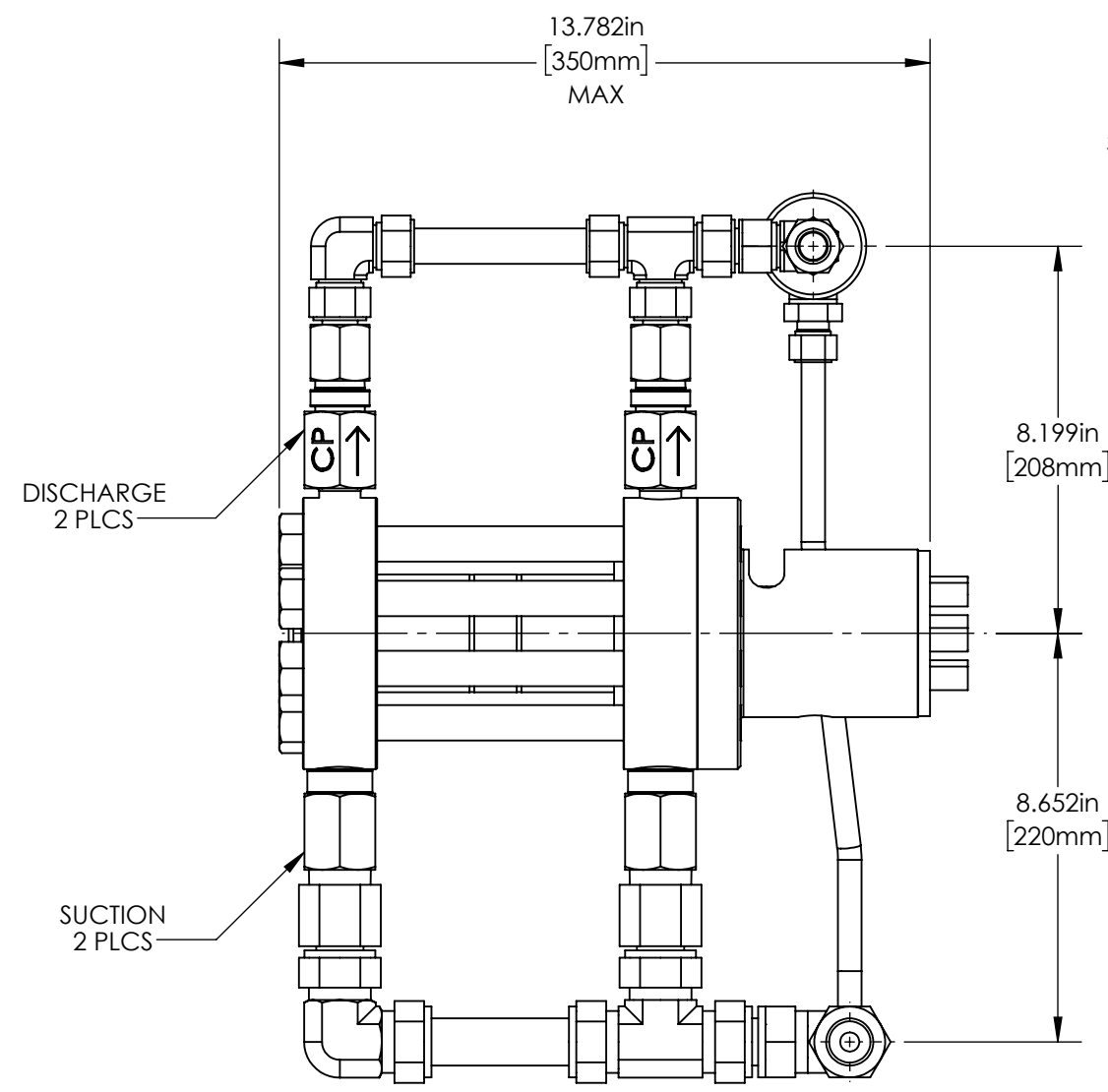
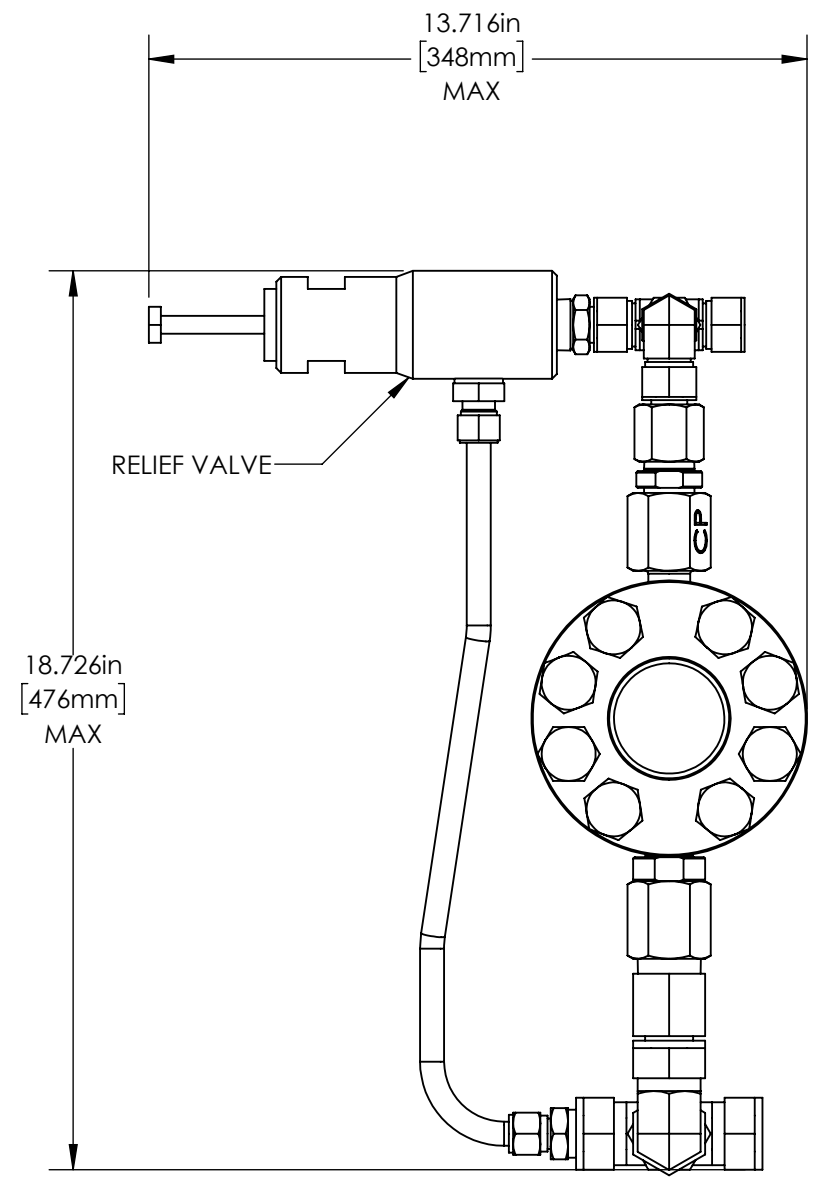
8	7	6
PART #	HEAD MATERIAL	PLUNGER MATERIAL
W58MN28CAQPN3Q6	NITRONIC	CERAMIC

1	
DATE	APPROVED
FEB-03-25	WRS



D  
C  
B  
A

D  
C  
B  
A



MARKETING DRAWING



CheckPoint Pumps & Systems	
DWG. TITLE W58 WET END ASSY ADJ- 1-3/4" -FKM	
REV 000	W58MN28CAQPN3Q6
DRAWING NUMBER	
SHEET 1 OF 4	

WEIGHT	60.86 lb / 27.60 kg
--------	---------------------

CPHQ/PTL-SHR-365 REV. 01 EFF. DATE: 10 JUL 2025

PROPRIETARY AND CONFIDENTIAL  
THE INFORMATION CONTAINED HEREIN IS PROPRIETARY TO CHECKPOINT SYSTEMS AND SHALL NOT BE REPRODUCED OR DISCLOSED IN WHOLE OR IN PART OR USED FOR ANY PURPOSE EXCEPT WHEN SUCH USER POSSESSES DIRECT WRITTEN AUTHORIZATION FROM CHECKPOINT SYSTEMS

8	7	6	5	4	3	2	1
---	---	---	---	---	---	---	---

8

7

6

5

4

3

2

1

**W58MN28CAHPN3H6**

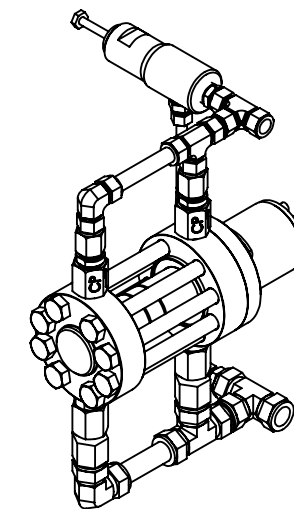
ITEM NO.	PART NUMBER	DESCRIPTION	QTY.
1	CDM12S6H101	CHECK ASSY	2
2	CSM16S6H101	CHECK ASSY	2
3	FT12EE12316	3/4" TUBE ELBOW	1
4	FT12ET12316	3/4" TUBE TEE	2
5	FT12FA12N316	ADAPTER	2
6	FT12MA12N316	ADAPTER	1
7	FT12PC12316	PORT CONNECTOR	1
8	FT16EE16316	ELBOW	1
9	FT16ET16316	TEE	2
10	FT16FA16N316	ADAPTER	2
11	FT16PC16316	PORT CONNECTOR	1
12	FT16TUR8316	REDUCER	1
13	FT8MSC12N316	CONNECTOR	1
14	HHBS60813100	BOLT - GUARD CYLINDER	6
15	HHBS6112100927	BOLT - HEAD	8
16	HHJNS711116	JAM NUT	1
17	HHNS60820	JAM NUT - PLUNGER	1
18	NLWS6108	1/2" Nord Lock Washer	1
19	OPTS128H	OPTIRING	1
20	PBFLGHS6258-1	BOTTOM FLANGE - HEAD	1
21	PCYLHNS128	CYLINDER HEAD	1
22	PGCYLS6258	GUARD CYLINDER	1
23	PPBODHN5128-1	PISTON BODY	1
24	PPCAPHN5128-1	PISTON CAP	1
25	PPLGRHCE210-1	PLUNGER ROD	1
26	PPNS6110	PACKING NUT	1
27	PTFLGHS6258	TOP FLANGE - HEAD	1
28	RVC05-07T-4500	RELIEF VALVE	1
29	SELORHN-3303	O-RING	2
30	ST65S616S	1" TUBING	1
31	ST83S612S	0.75" TUBING	1
32	ST35S608S	3/4" TUBING	1
33	V50635HLC	PACKING	1

**W58MN28CAFPN3F6**

ITEM NO.	PART NUMBER	DESCRIPTION	QTY.
1	CDM12S6F101	CHECK ASSY	2
2	CSM16S6F101	CHECK ASSY	2
3	FT12EE12316	3/4" TUBE ELBOW	1
4	FT12ET12316	3/4" TUBE TEE	2
5	FT12FA12N316	ADAPTER	2
6	FT12MA12N316	ADAPTER	1
7	FT12PC12316	PORT CONNECTOR	1
8	FT16EE16316	ELBOW	1
9	FT16ET16316	TEE	2
10	FT16FA16N316	ADAPTER	2
11	FT16PC16316	PORT CONNECTOR	1
12	FT16TUR8316	REDUCER	1
13	FT8MSC12N316	CONNECTOR	1
14	HHBS60813100	BOLT - GUARD CYLINDER	6
15	HHBS6112100927	BOLT - HEAD	8
16	HHJNS711116	JAM NUT	1
17	HHNS60820	JAM NUT - PLUNGER	1
18	NLWS6108	1/2" Nord Lock Washer	1
19	OPTS128F	OPTIRING	1
20	PBFLGHS6258-1	BOTTOM FLANGE - HEAD	1
21	PCYLHNS128	CYLINDER HEAD	1
22	PGCYLS6258	GUARD CYLINDER	1
23	PPBODHN5128-1	PISTON BODY	1
24	PPCAPHN5128-1	PISTON CAP	1
25	PPLGRHCE210-1	PLUNGER ROD	1
26	PPNS6110	PACKING NUT	1
27	PTFLGHS6258	TOP FLANGE - HEAD	1
28	RVC05-07T-4500	RELIEF VALVE	1
29	SELORFK-3303	O-RING	2
30	ST65S616S	1" TUBING	1
31	ST83S612S	0.75" TUBING	1
32	ST35S608S	3/4" TUBING	1
33	V50635FLC	PACKING	1

**W58MN28CAQPN3Q6**

ITEM NO.	PART NUMBER	DESCRIPTION	QTY.
1	CDM12S6Q101	CHECK ASSY	2
2	CSM16S6Q101	CHECK ASSY	2
3	FT12EE12316	3/4" TUBE ELBOW	1
4	FT12ET12316	3/4" TUBE TEE	2
5	FT12FA12N316	ADAPTER	2
6	FT12MA12N316	ADAPTER	1
7	FT12PC12316	PORT CONNECTOR	1
8	FT16EE16316	ELBOW	1
9	FT16ET16316	TEE	2
10	FT16FA16N316	ADAPTER	2
11	FT16PC16316	PORT CONNECTOR	1
12	FT16TUR8316	REDUCER	1
13	FT8MSC12N316	CONNECTOR	1
14	HHBS60813100	BOLT - GUARD CYLINDER	6
15	HHBS6112100927	BOLT - HEAD	8
16	HHJNS711116	JAM NUT	1
17	HHNS60820	JAM NUT - PLUNGER	1
18	NLWS6108	1/2" Nord Lock Washer	1
19	OPTS128Q	OPTIRING	1
20	PBFLGHS6258-1	BOTTOM FLANGE - HEAD	1
21	PCYLHNS128	CYLINDER HEAD	1
22	PGCYLS6258	GUARD CYLINDER	1
23	PPBODHN5128-1	PISTON BODY	1
24	PPCAPHN5128-1	PISTON CAP	1
25	PPLGRHCE210-1	PLUNGER ROD	1
26	PPNS6110	PACKING NUT	1
27	PTFLGHS6258	TOP FLANGE - HEAD	1
28	RVC05-07T-4500	RELIEF VALVE	1
29	SELORPF-3303	O-RING	2
30	ST65S616S	1" TUBING	1
31	ST83S612S	0.75" TUBING	1
32	ST35S608S	3/4" TUBING	1
33	V50635QLC	PACKING	1



## MARKETING DRAWING

**CheckPoint**  
Pumps & Systems

DWG. TITLE  
**W58 WET END ASSY  
ADJ- 1-3/4" -FKM**

REV  
**000** **W58MN28CAQPN3Q6**

SIZE  
**B**

DRAWING NUMBER

SHEET 2 OF 4

CPHQ/PTL-SHR-365 REV. 01 EFF. DATE: 10 JUL 2025

PROPRIETARY AND CONFIDENTIAL  
THE INFORMATION CONTAINED HEREIN IS PROPRIETARY TO CHECKPOINT SYSTEMS AND SHALL NOT  
BE REPRODUCED OR DISCLOSED IN WHOLE OR IN PART OR USED FOR ANY PURPOSE EXCEPT WHEN  
SUCH USER POSSESSES DIRECT WRITTEN AUTHORIZATION FROM CHECKPOINT SYSTEMS



8

7

6

5

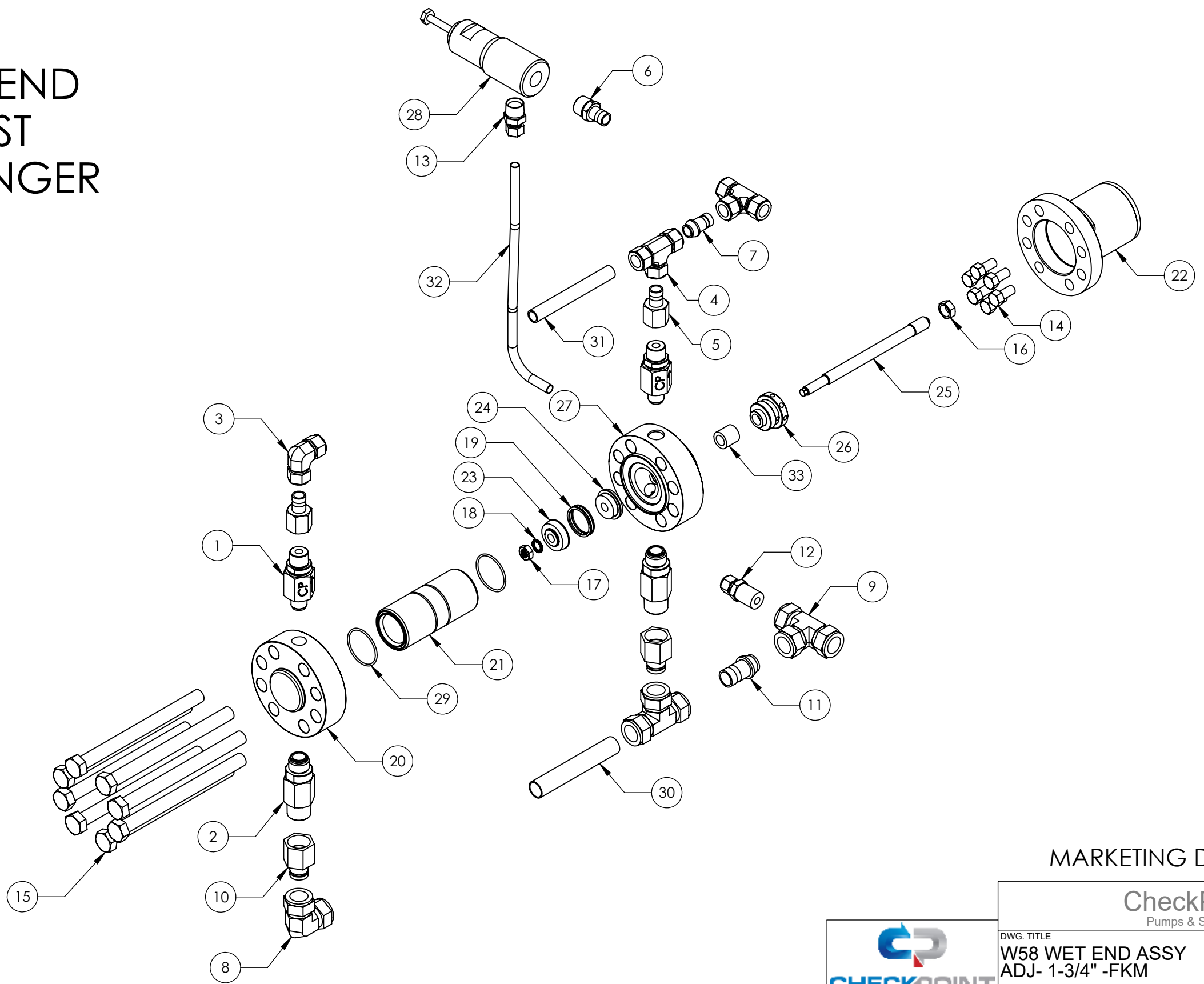
4

3

2

1

# 54-84 WET END PARTS LIST 1 - 3/4" PLUNGER



MARKETING DRAWING

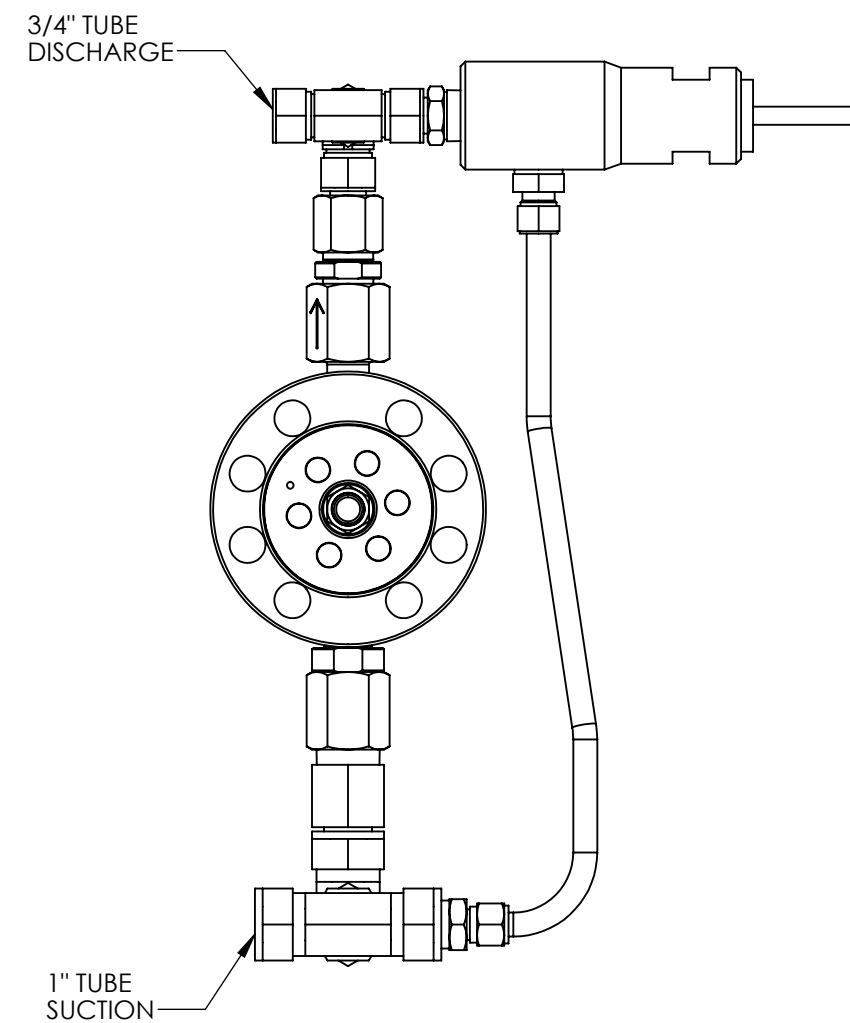
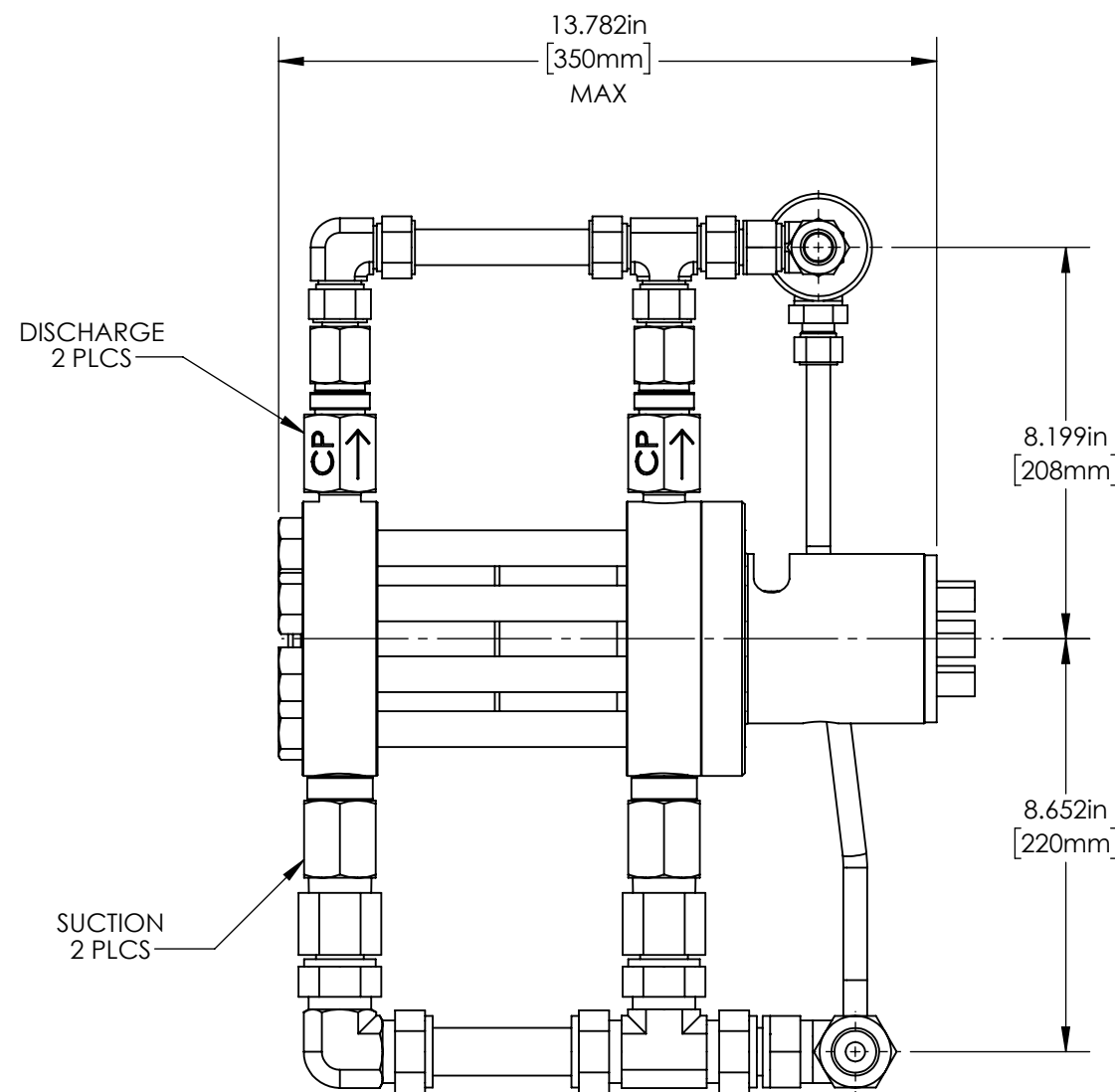
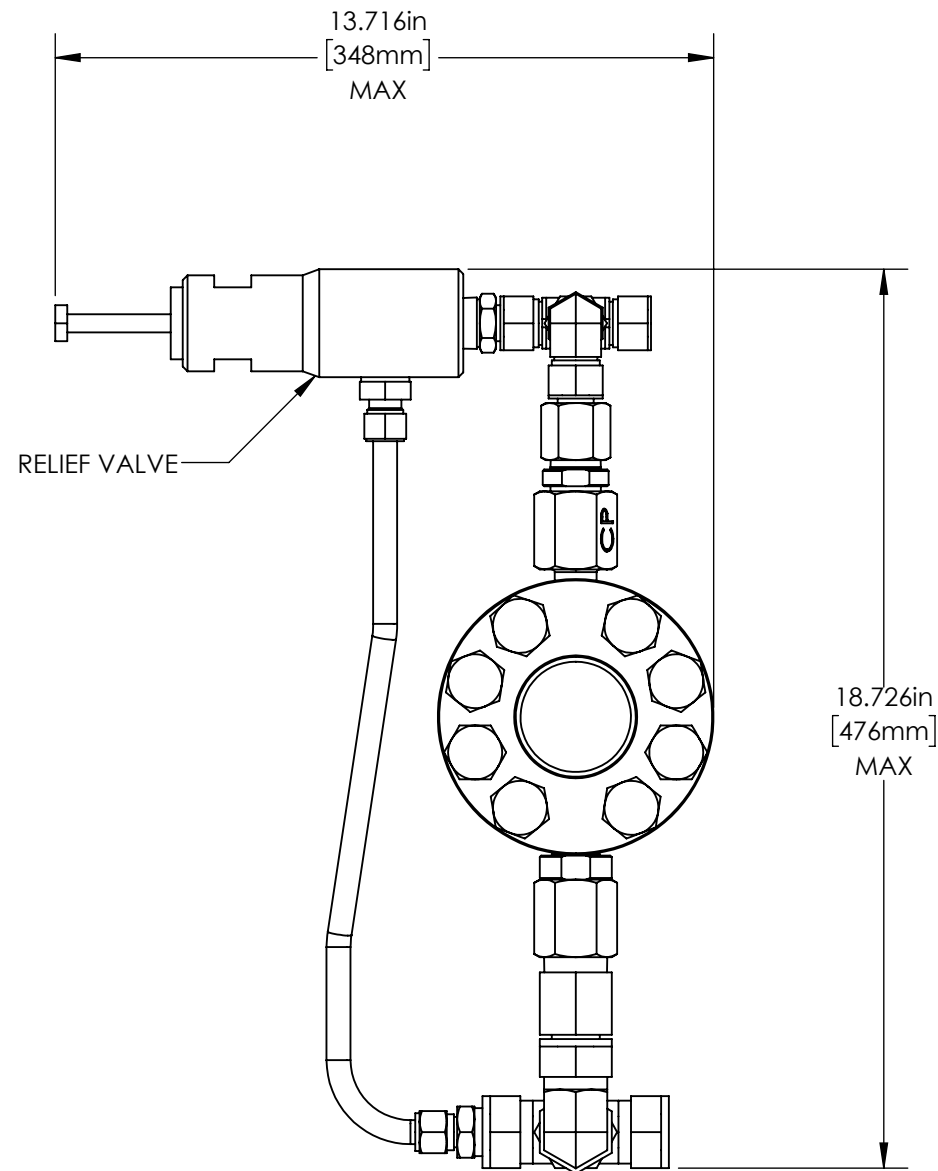
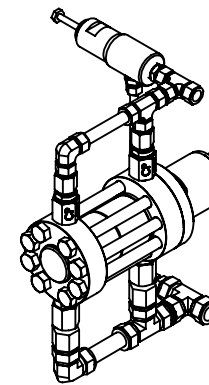
**CheckPoint**  
Pumps & Systems

DWG. TITLE		SIZE
W58 WET END ASSY ADJ- 1-3/4" -FKM		<b>B</b>
REV	DRAWING NUMBER	SHEET 3 OF 4
000	W58MN28CAQPN3Q6	



8	7	6
PART #	HEAD MATERIAL	PLUNGER MATERIAL
W58MN40CAQPN3Q6	NITRONIC	CERAMIC

1
DATE
FEB-03-25
APPROVED
WRS



MARKETING DRAWING

CheckPoint  
Pumps & Systems



DWG. TITLE	W58 WET END ASSY ADJ- 2-1/2" - FKM		SIZE
REV	000	W58MN40CAQPN3Q6	B
DRAWING NUMBER		SHEET 1 OF 4	

WEIGHT 60.86 lb / 27.60 kg

CPHQ/PTL-SHR-365 REV. 01 EFF. DATE: 10 JUL 2025

PROPRIETARY AND CONFIDENTIAL  
THE INFORMATION CONTAINED HEREIN IS PROPRIETARY TO CHECKPOINT SYSTEMS AND SHALL NOT BE REPRODUCED OR DISCLOSED IN WHOLE OR IN PART OR USED FOR ANY PUPOSE EXCEPT WHEN SUCH USER POSSESSES DIRECT WRITTEN AUTHORIZATION FROM CHECKPOINT SYSTEMS

8	7	6	5	4	3	2	1
---	---	---	---	---	---	---	---

8

7

6

5

4

3

2

1

**W58MN40CAHPN3H6**

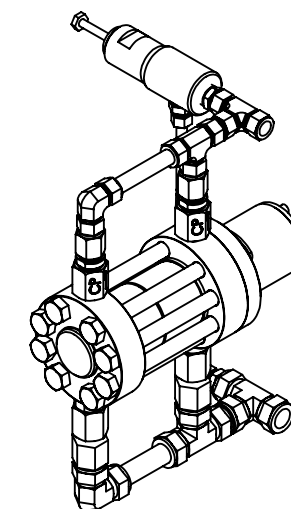
ITEM NO.	PART NUMBER	DESCRIPTION	QTY.
1	CDM12S6H101	CHECK ASSY	2
2	CSM16S6H101	CHECK ASSY	2
3	FT12EE12316	3/4" TUBE ELBOW	1
4	FT12ET12316	3/4" TUBE TEE	2
5	FT12FA12N316	ADAPTER	2
6	FT12MA12N316	ADAPTER	1
7	FT12PC12316	PORT CONNECTOR	1
8	FT16EE16316	ELBOW	1
9	FT16ET16316	TEE	2
10	FT16FA16N316	ADAPTER	2
11	FT16PC16316	PORT CONNECTOR	1
12	FT16TUR8316	REDUCER	1
13	FT8MSC12N316	CONNECTOR	1
14	HHBS60813100	BOLT - GUARD CYLINDER	6
15	HHBS6112100927	BOLT - HEAD	8
16	HHJNS711116	JAM NUT	1
17	HHNS60820	JAM NUT - PLUNGER	1
18	NLWS6108	1/2" Nord Lock Washer	1
19	OPTS140H	OPTIRING - HEAD	1
20	ORHN4803	O-RING	2
21	PBFLGHS6258-1	BOTTOM FLANGE - HEAD	1
22	PCYLHNS140	CYLINDER HEAD	1
23	PGCYLS6258	GUARD CYLINDER	1
24	PPBODHN5140-1	PISTON BODY	1
25	PPCAPHN5140-1	PISTON CAP	1
26	PPLGRHCE210-1	PLUNGER ROD	1
27	PPNS6110	PACKING NUT	1
28	PTFLGHS6258	TOP FLANGE - HEAD	1
29	RVC05-07T-4500	RELIEF VALVE	1
30	ST83S612S	TUBE	1
31	ST65S616S	TUBE	1
32	ST35S608S	TUBE	1
33	V50635HLC	PACKING	1

**W58MN40CAFPN3F6**

ITEM NO.	PART NUMBER	DESCRIPTION	QTY.
1	CDM12S6F101	CHECK ASSY	2
2	CSM16S6F101	CHECK ASSY	2
3	FT12EE12316	3/4" TUBE ELBOW	1
4	FT12ET12316	3/4" TUBE TEE	2
5	FT12FA12N316	ADAPTER	2
6	FT12MA12N316	ADAPTER	1
7	FT12PC12316	PORT CONNECTOR	1
8	FT16EE16316	ELBOW	1
9	FT16ET16316	TEE	2
10	FT16FA16N316	ADAPTER	2
11	FT16PC16316	PORT CONNECTOR	1
12	FT16TUR8316	REDUCER	1
13	FT8MSC12N316	CONNECTOR	1
14	HHBS60813100	BOLT - GUARD CYLINDER	6
15	HHBS6112100927	BOLT - HEAD	8
16	HHJNS711116	JAM NUT	1
17	HHNS60820	JAM NUT - PLUNGER	1
18	NLWS6108	1/2" Nord Lock Washer	1
19	OPTS140F	OPTIRING - HEAD	1
20	ORFK4803	O-RING	2
21	PBFLGHS6258-1	BOTTOM FLANGE - HEAD	1
22	PCYLHNS140	CYLINDER HEAD	1
23	PGCYLS6258	GUARD CYLINDER	1
24	PPBODHN5140-1	PISTON BODY	1
25	PPCAPHN5140-1	PISTON CAP	1
26	PPLGRHCE210-1	PLUNGER ROD	1
27	PPNS6110	PACKING NUT	1
28	PTFLGHS6258	TOP FLANGE - HEAD	1
29	RVC05-07T-4500	RELIEF VALVE	1
30	ST35S608S	TUBE	1
31	ST65S616S	TUBE	1
32	ST83S612S	TUBE	1
33	V50635FLC	PACKING	1

**W58MN40CAQPN3Q6**

ITEM NO.	PART NUMBER	DESCRIPTION	QTY.
1	CDM12S6Q101	CHECK ASSY	2
2	CSM16S6Q101	CHECK ASSY	2
3	FT12EE12316	3/4" TUBE ELBOW	1
4	FT12ET12316	3/4" TUBE TEE	2
5	FT12FA12N316	ADAPTER	2
6	FT12MA12N316	ADAPTER	1
7	FT12PC12316	PORT CONNECTOR	1
8	FT16EE16316	ELBOW	1
9	FT16ET16316	TEE	2
10	FT16FA16N316	ADAPTER	2
11	FT16PC16316	PORT CONNECTOR	1
12	FT16TUR8316	REDUCER	1
13	FT8MSC12N316	CONNECTOR	1
14	HHBS60813100	BOLT - GUARD CYLINDER	6
15	HHBS6112100927	BOLT - HEAD	8
16	HHJNS711116	JAM NUT	1
17	HHNS60820	JAM NUT - PLUNGER	1
18	NLWS6108	1/2" Nord Lock Washer	1
19	OPTS140Q	OPTIRING - HEAD	1
20	ORPF4803	O-RING	2
21	PBFLGHS6258-1	BOTTOM FLANGE - HEAD	1
22	PCYLHNS140	CYLINDER HEAD	1
23	PGCYLS6258	GUARD CYLINDER	1
24	PPBODHN5140-1	PISTON BODY	1
25	PPCAPHN5140-1	PISTON CAP	1
26	PPLGRHCE210-1	PLUNGER ROD	1
27	PPNS6110	PACKING NUT	1
28	PTFLGHS6258	TOP FLANGE - HEAD	1
29	RVC05-07T-4500	RELIEF VALVE	1
30	ST35S608S	TUBE	1
31	ST65S616S	TUBE	1
32	ST83S612S	TUBE	1
33	V50635QLC	PACKING	1

**MARKETING DRAWING**

**CheckPoint**  
Pumps & Systems

DWG. TITLE  
**W58 WET END ASSY  
ADJ- 2-1/2" - FKM**

REV 000 **W58MN40CAQPN3Q6**

SIZE  
**B**

DRAWING NUMBER

SHEET 2 OF 4



PROPRIETARY AND CONFIDENTIAL

THE INFORMATION CONTAINED HEREIN IS PROPRIETARY TO CHECKPOINT SYSTEMS AND SHALL NOT BE REPRODUCED OR DISCLOSED IN WHOLE OR IN PART OR USED FOR ANY PURPOSE EXCEPT WHEN SUCH USER POSSESSES DIRECT WRITTEN AUTHORIZATION FROM CHECKPOINT SYSTEMS

CPHQ/PTL-SHR-365 REV. 01 EFF. DATE: 10 JUL 2025

8

7

6

5

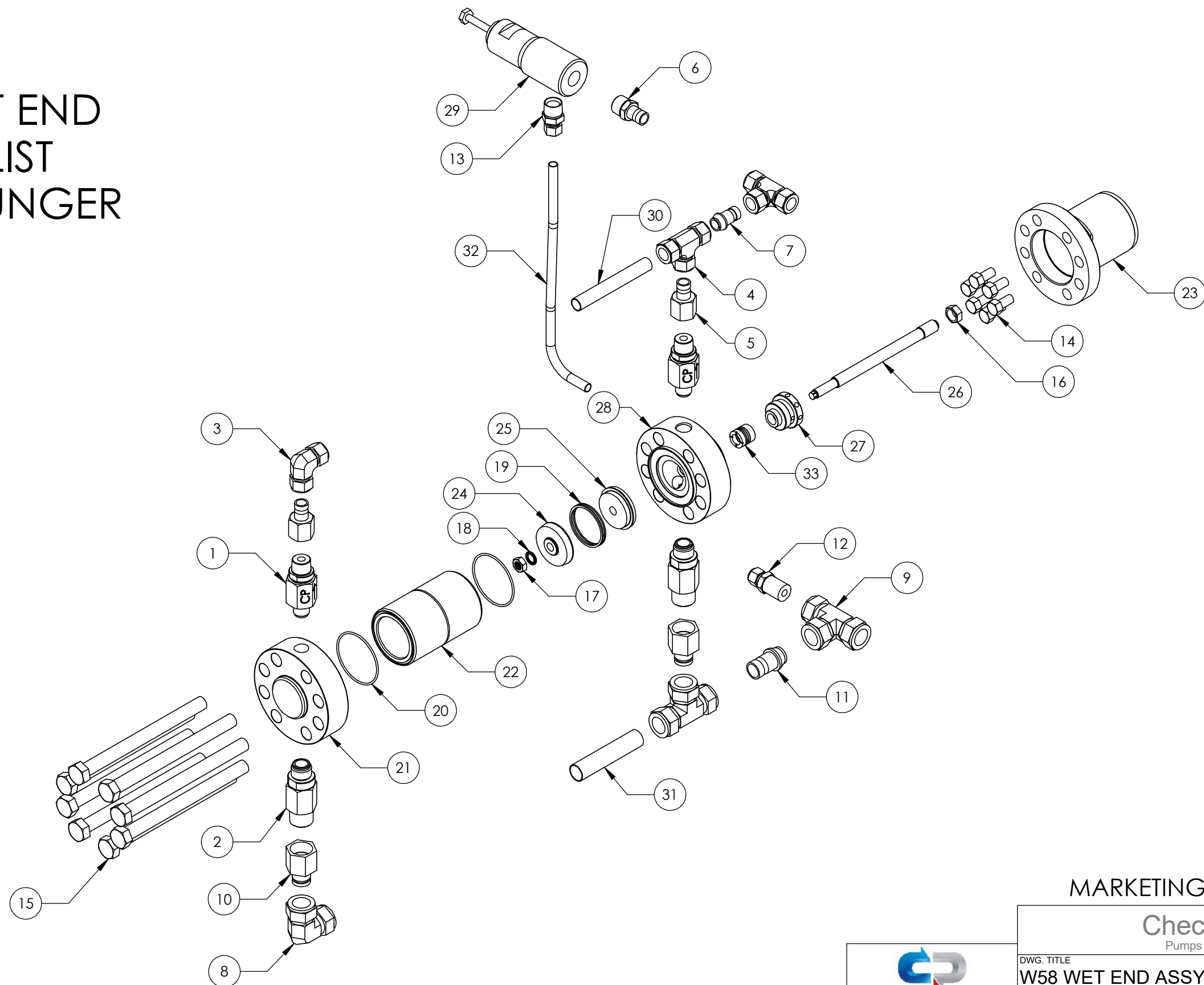
4

3

2

1

# 54-84 WET END PARTS LIST 2 - 1/2" PLUNGER



MARKETING DRAWING

**CheckPoint**  
Pumps & Systems

DWG. TITLE		SIZE <b>B</b>
W58 WET END ASSY ADJ- 2-1/2" - FKM		
REV	000	W58MN40CAQPN3Q6
DRAWING NUMBER		SHEET 3 OF 3



**PROPRIETARY AND CONFIDENTIAL**  
THE INFORMATION CONTAINED HEREIN IS PROPRIETARY TO CHECKPOINT SYSTEMS AND SHALL NOT BE REPRODUCED OR DISCLOSED IN WHOLE OR IN PART OR USED FOR ANY PURPOSE EXCEPT WHEN SUCH USER POSSESSES DIRECT WRITTEN AUTHORIZATION FROM CHECKPOINT SYSTEMS