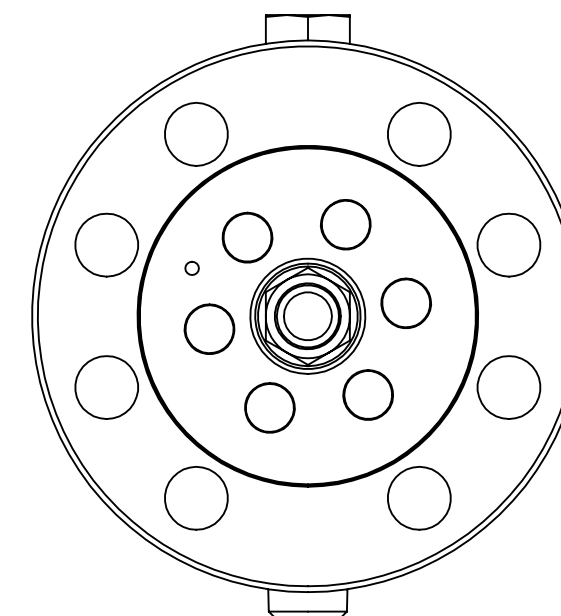
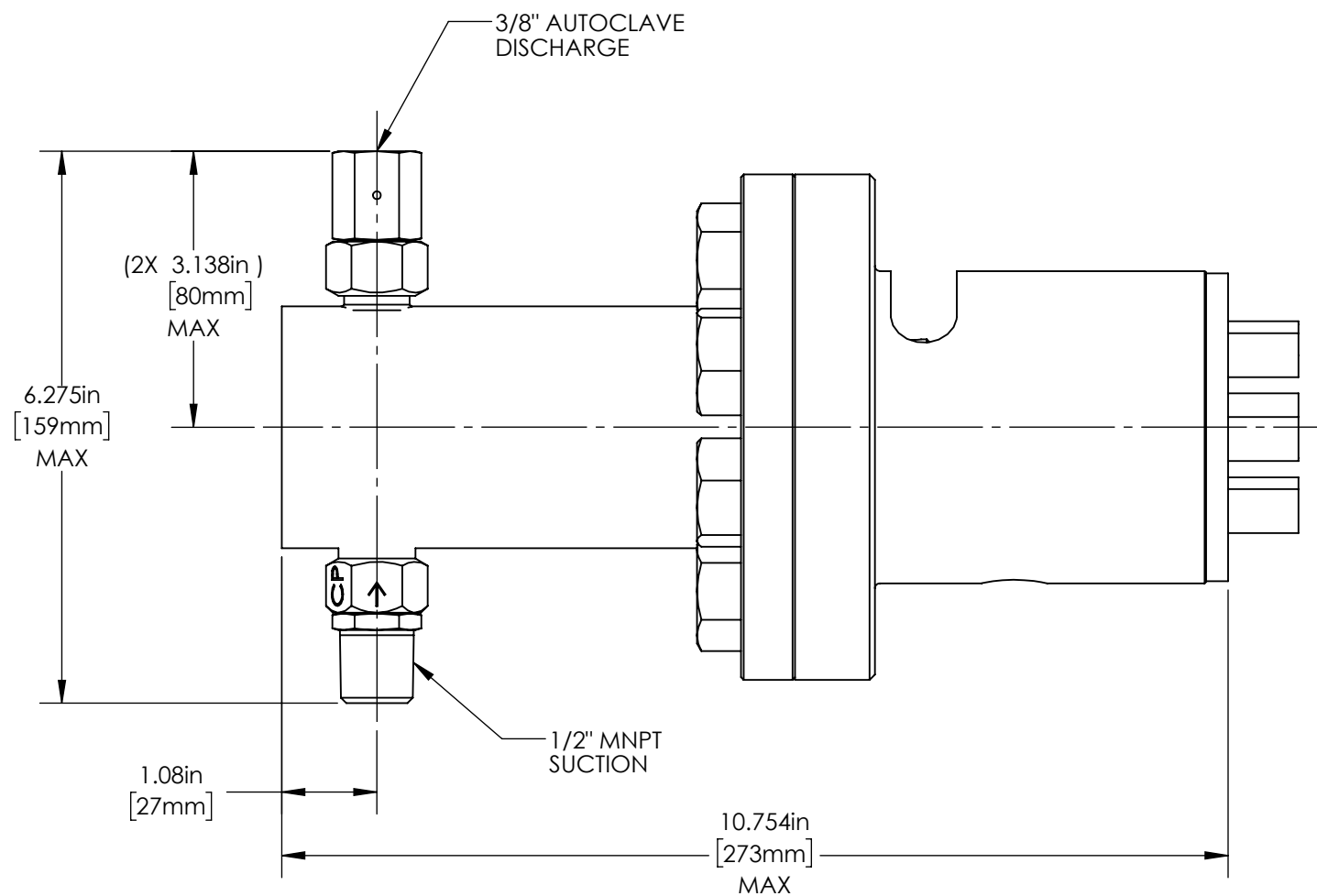
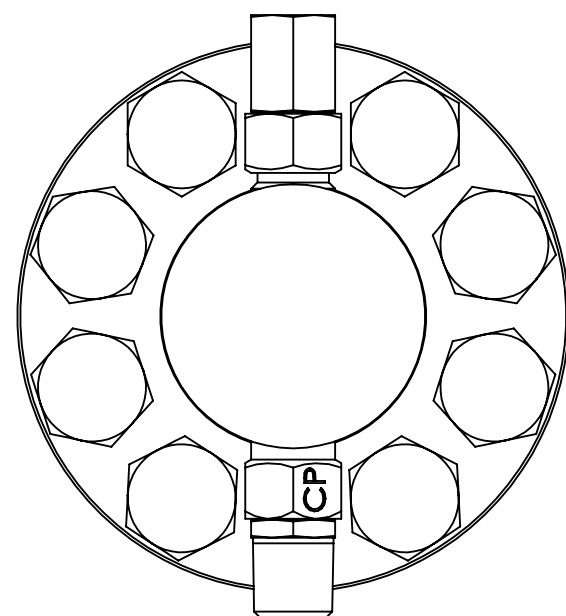
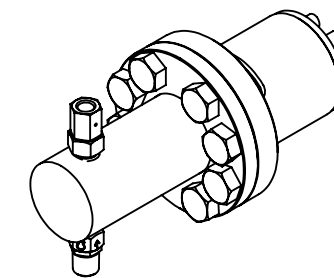


8	7	6
PART #	HEAD MATERIAL	PLUNGER MATERIAL
W58D308CNQPN3Q6	316 SS	CERAMIC

1	DATE	APPROVED
	MAR-12-25	WRS



MARKETING DRAWING

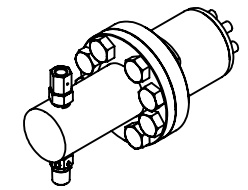
CheckPoint
Pumps & Systems

DWG. TITLE		REV	DRAWING NUMBER	SHEET 1 OF 4
P54-P84 WET END ASSY NON ADJ - 1/2" -FKM				
000	W58D308CNQPN3Q6			



PROPRIETARY AND CONFIDENTIAL
THE INFORMATION CONTAINED HEREIN IS PROPRIETARY TO CHECKPOINT SYSTEMS AND SHALL NOT BE REPRODUCED OR DISCLOSED IN WHOLE OR IN PART OR USED FOR ANY PUPOSE EXCEPT WHEN SUCH USER POSSESSES DIRECT WRITTEN AUTHORIZATION FROM CHECKPOINT SYSTEMS

WEIGHT 25.83 lb / 11.72 kg



W58D308CNHPN3H6

ITEM NO.	PART NUMBER	DESCRIPTION	QTY.
1	CDA06S6H101	CHECK ASSY	1
2	CFM08S6H201	SUCTION CHECK ASSY	1
3	HHBS60813100	BOLT - GUARD CYLINDER	6
4	HHBS61210100	BOLT RETAINING FLANGE	8
5	HHJNS711116	JAM NUT	1
6	NCS08H100098	SEAL	1
7	P50GNWS608	GLAND NUT	1
8	PGCYLS6258	GUARD CYLINDER	1
9	PHEADS6108	HEAD	1
10	PPLGRHCE208	PLUNGER ROD	1
11	PRFLGHS6108	RETAINING FLANGE	1
12	SELWI-VI0803	WIPER	1

W58D308CNFPN3F6

ITEM NO.	PART NUMBER	DESCRIPTION	QTY.
1	CDA06S6F101	CHECK ASSY	1
2	CFM08S6F201	SUCTION CHECK ASSY	1
3	HHBS60813100	BOLT - GUARD CYLINDER	6
4	HHBS61210100	BOLT RETAINING FLANGE	8
5	HHJNS711116	JAM NUT	1
6	NCS08F100098	SEAL	1
7	P50GNWS608	GLAND NUT	1
8	PGCYLS6258	GUARD CYLINDER	1
9	PHEADS6108	HEAD	1
10	PPLGRHCE208	PLUNGER ROD	1
11	PRFLGHS6108	RETAINING FLANGE	1
12	SELWI-VI0803	WIPER	1

W58D308CNQPN3Q6

ITEM NO.	PART NUMBER	DESCRIPTION	QTY.
1	CDA06S6Q101	CHECK ASSY	1
2	CFM08S6Q201	SUCTION CHECK ASSY	1
3	HHBS60813100	BOLT - GUARD CYLINDER	6
4	HHBS61210100	BOLT RETAINING FLANGE	8
5	HHJNS711116	JAM NUT	1
6	NCS08Q100098	SEAL	1
7	P50GNWS608	GLAND NUT	1
8	PGCYLS6258	GUARD CYLINDER	1
9	PHEADS6108	HEAD	1
10	PPLGRHCE208	PLUNGER ROD	1
11	PRFLGHS6108	RETAINING FLANGE	1
12	SELWI-VI0803	WIPER	1

MARKETING DRAWING

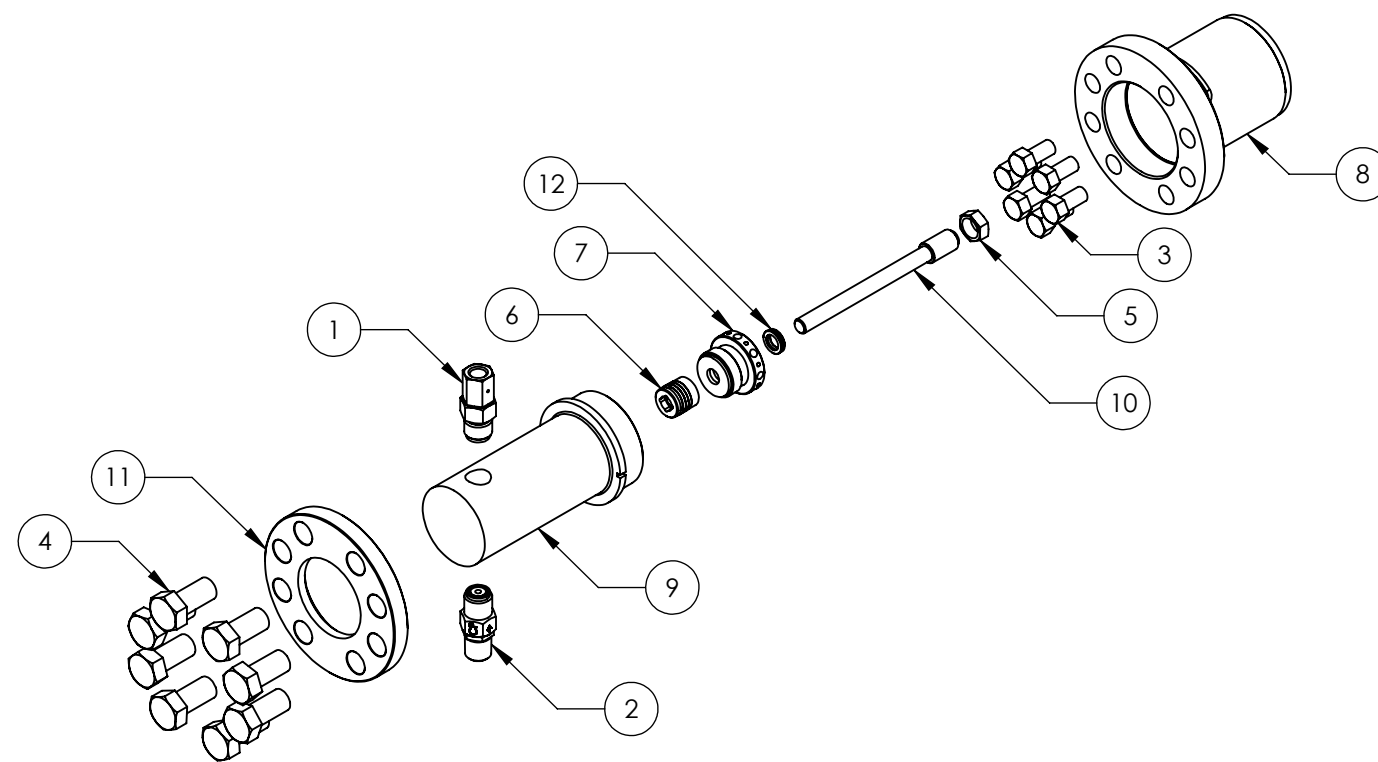
CheckPoint
Pumps & Systems



DWG. TITLE		SIZE B
P54-P84 WET END ASSY NON ADJ - 1/2" -FKM		
REV	000	W58D308CNQPN3Q6
DRAWING NUMBER		SHEET 2 OF 4

PROPRIETARY AND CONFIDENTIAL
THE INFORMATION CONTAINED HEREIN IS PROPRIETARY TO CHECKPOINT SYSTEMS AND SHALL NOT BE REPRODUCED OR DISCLOSED IN WHOLE OR IN PART OR USED FOR ANY PURPOSE EXCEPT WHEN SUCH USER POSSESSES DIRECT WRITTEN AUTHORIZATION FROM CHECKPOINT SYSTEMS

54-84 WET END PARTS LIST 1/2" PLUNGER



MARKETING DRAWING

CheckPoint
Pumps & Systems

DWG. TITLE
**P54-P84 WET END ASSY
NON ADJ - 1/2" -FKM**

REV 000	W58D308CNQPN3Q6
-------------------	------------------------

SIZE
B

DRAWING NUMBER

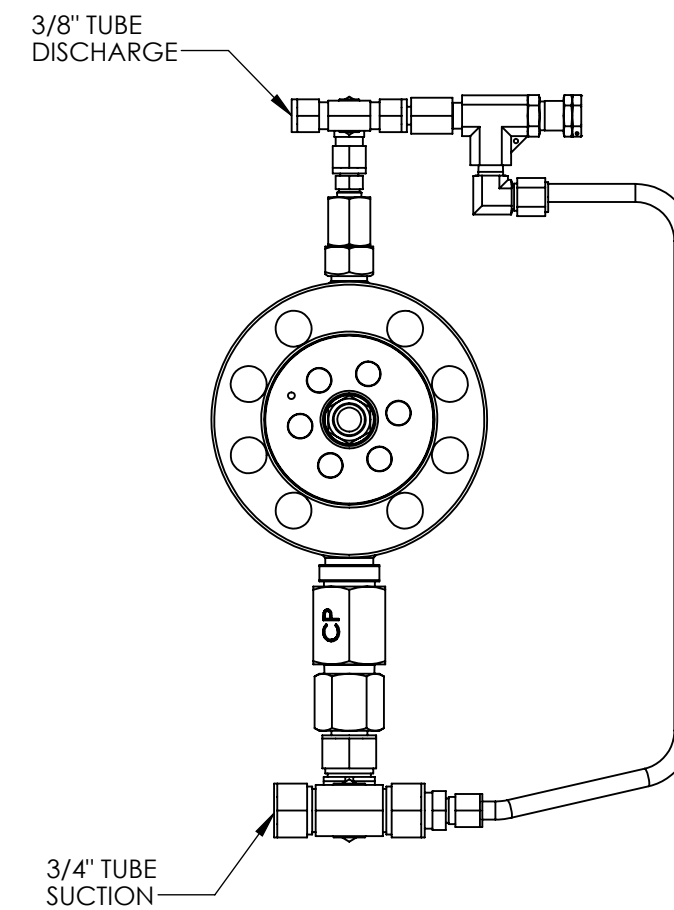
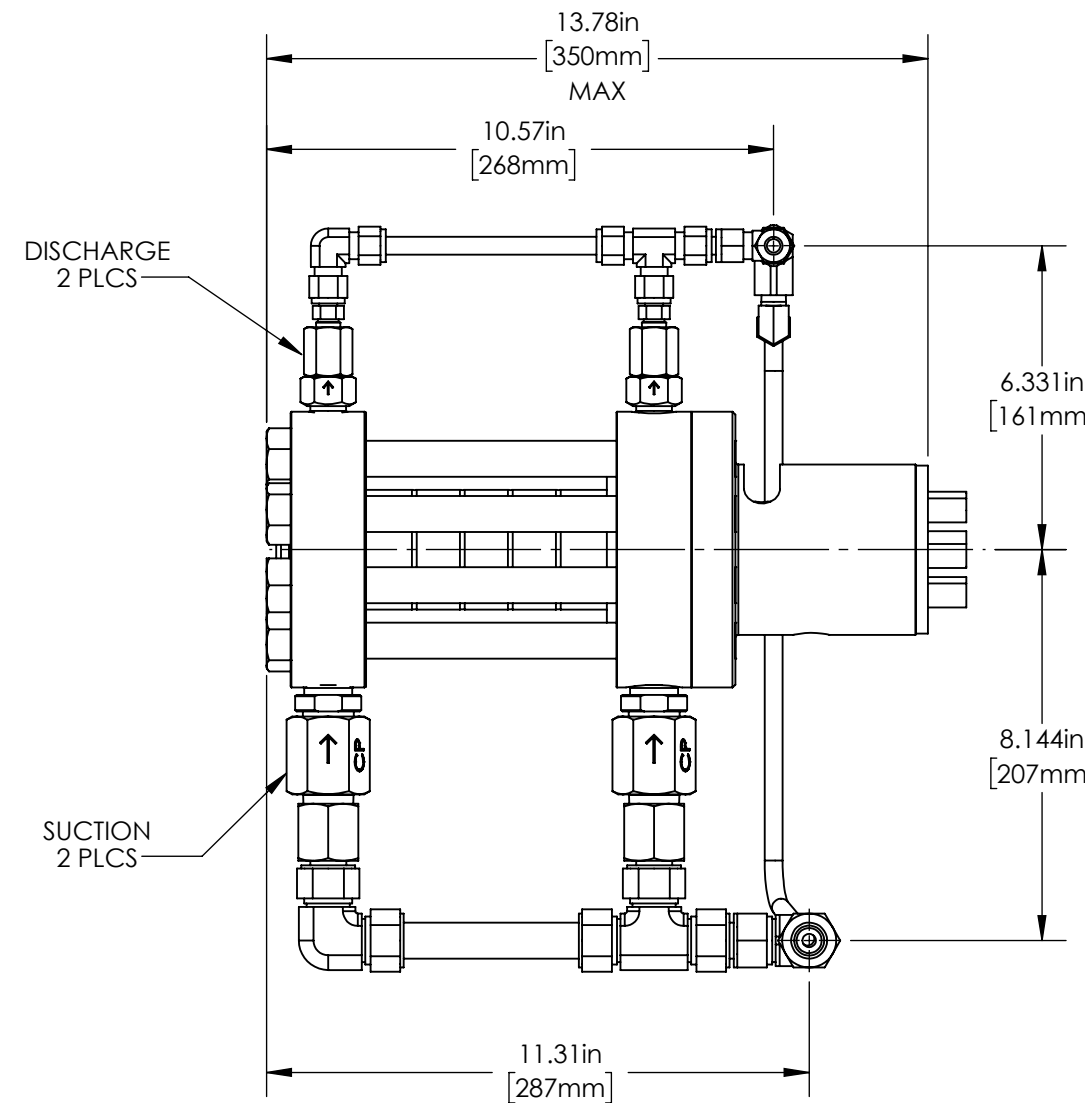
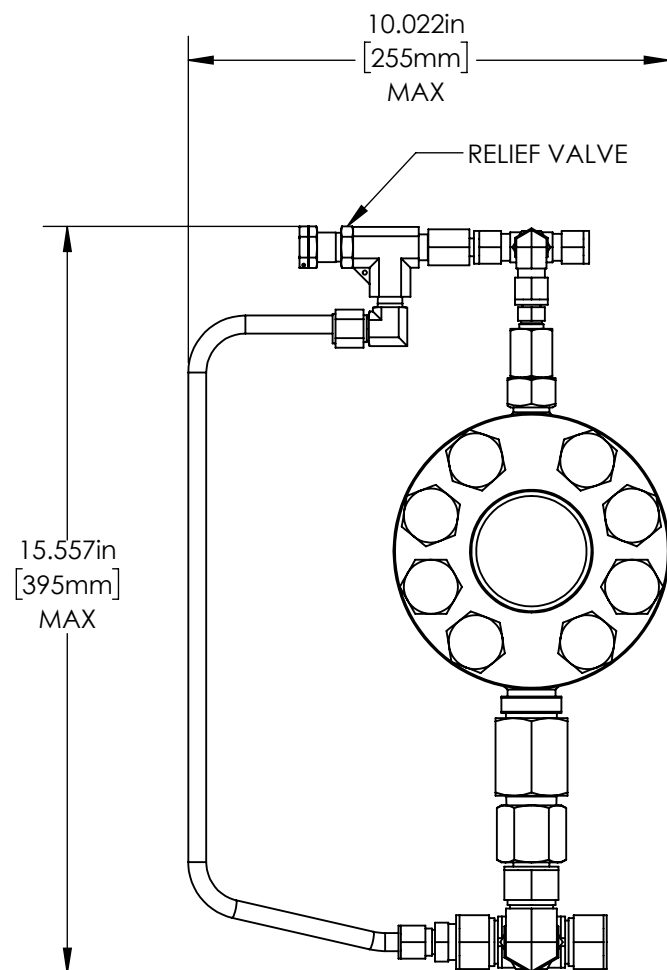
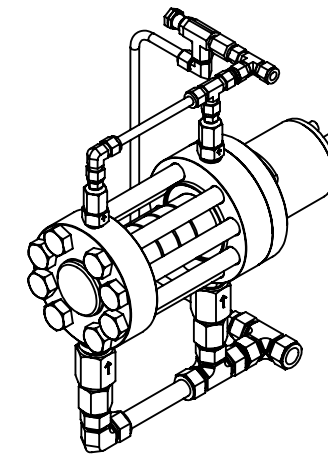
SHEET 3 OF 4



PROPRIETARY AND CONFIDENTIAL
THE INFORMATION CONTAINED HEREIN IS PROPRIETARY TO CHECKPOINT SYSTEMS AND SHALL NOT BE REPRODUCED OR DISCLOSED IN WHOLE OR IN PART OR USED FOR ANY PURPOSE EXCEPT WHEN SUCH USER POSSESSES DIRECT WRITTEN AUTHORIZATION FROM CHECKPOINT SYSTEMS

8	7	6
PART #	HEAD MATERIAL	PLUNGER MATERIAL
W54MN12CAQPN3Q6	NITRONIC	CERAMIC

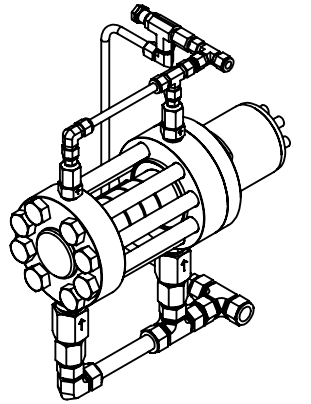
1
DATE
MAR-11-25
APPROVED
WRS



MARKETING DRAWING	
CheckPoint	
Pumps & Systems	
DWG. TITLE	
P54 WET END ASSY	
ADJ - 3/4" - FKM	
REV	
001	W54MN12CAQPN3Q6
DRAWING NUMBER	
SHEET 1 OF 4	

WEIGHT	54.32 lb / 24.64 kg	CPHQ/PTL-SHR-325	REV. 01	EFF. DATE: 10 JUL 2025
--------	---------------------	------------------	---------	------------------------

PROPRIETARY AND CONFIDENTIAL
 THE INFORMATION CONTAINED HEREIN IS PROPRIETARY TO CHECKPOINT SYSTEMS AND SHALL NOT BE REPRODUCED OR DISCLOSED IN WHOLE OR IN PART OR USED FOR ANY PURPOSE EXCEPT WHEN SUCH USER POSSESSES DIRECT WRITTEN AUTHORIZATION FROM CHECKPOINT SYSTEMS



W54MN12CAHPN3H6

ITEM NO.	PART NUMBER	DESCRIPTION	QTY.
1	CDF04S6H101	CHECK ASSEMBLY	2
2	CSM12S6H101-010	SUCTION CHECK	2
3	FT12EE12316	3/4" TUBE ELBOW	1
4	FT12ET12316	3/4" TUBE TEE	2
5	FT12FA12N316	ADAPTER	2
6	FT12PC12316	PORT CONNECTOR	1
7	FT12TUR6316	REDUCER	1
8	FT6EE6316	ELBOW	1
9	FT6ET6316	UNION TEE	2
10	FT6FA4N316	ADAPTER	1
11	FT6MA4N316	ADAPTER	2
12	FT6MSEL4N316	ELBOW	1
13	FT6PC6316	PORT CONNECTOR	1
14	HHBS60813100	BOLT - GUARD CYLINDER	6
15	HHBS6112100927	BOLT - HEAD	8
16	HHJNS711116	JAM NUT	1
17	HHNS60624	HEX JAM NUT	1
18	HLWS6106	WASHER	1
19	OPTS112H	OPTIRING	1
20	PBFLGHS6258-1	BOTTOM FLANGE - HEAD	1
21	PCYLHNS112	CYLINDER HEAD	1
22	PGCYLS6258	GUARD CYLINDER	1
23	PPBODHN5112	PISTON BODY	1
24	PPCAPHN5112	PISTON CAP	1
25	PPLGRHCE310	PLUNGER ROD	1
26	PPNS6108	PACKING NUT	1
27	PTFLGHS6258	TOP FLANGE - HEAD	1
28	RV010H	RELIEF VALVE	1
29	SELORHN-3303	O-RING	2
30	ST35S606S	3/8" TUBE	1
31	ST65S606S	3/8" TUBE	1
32	ST65S612S	3/4" TUBE	1
33	V50500HLC	PACKING	1

W54MN12CAFPN3F6

ITEM NO.	PART NUMBER	DESCRIPTION	QTY.
1	CDF04S6F101	CHECK ASSEMBLY	2
2	CSM12S6F101-010	SUCTION CHECK	2
3	FT12EE12316	3/4" TUBE ELBOW	1
4	FT12ET12316	3/4" TUBE TEE	2
5	FT12FA12N316	ADAPTER	2
6	FT12PC12316	PORT CONNECTOR	1
7	FT12TUR6316	REDUCER	1
8	FT6EE6316	ELBOW	1
9	FT6ET6316	UNION TEE	2
10	FT6FA4N316	ADAPTER	1
11	FT6MA4N316	ADAPTER	2
12	FT6MSEL4N316	ELBOW	1
13	FT6PC6316	PORT CONNECTOR	1
14	HHBS60813100	BOLT - GUARD CYLINDER	6
15	HHBS6112100927	BOLT - HEAD	8
16	HHJNS711116	JAM NUT	1
17	HHNS60624	HEX JAM NUT	1
18	HLWS6106	WASHER	1
19	OPTS112F	OPTIRING	1
20	PBFLGHS6258-1	BOTTOM FLANGE - HEAD	1
21	PCYLHNS112	CYLINDER HEAD	1
22	PGCYLS6258	GUARD CYLINDER	1
23	PPBODHN5112	PISTON BODY	1
24	PPCAPHN5112	PISTON CAP	1
25	PPLGRHCE310	PLUNGER ROD	1
26	PPNS6108	PACKING NUT	1
27	PTFLGHS6258	TOP FLANGE - HEAD	1
28	RV010F	RELIEF VALVE	1
29	SELORFK-3303	O-RING	2
30	ST35S606S	3/8" TUBE	1
31	ST65S606S	3/8" TUBE	1
32	ST65S612S	3/4" TUBE	1
33	V50500FLC	PACKING	1

W54MN12CAQPN3Q6

ITEM NO.	PART NUMBER	DESCRIPTION	QTY.
1	CDF04S6Q101	CHECK ASSEMBLY	2
2	CSM12S6Q101-010	SUCTION CHECK	2
3	FT12EE12316	3/4" TUBE ELBOW	1
4	FT12ET12316	3/4" TUBE TEE	2
5	FT12FA12N316	ADAPTER	2
6	FT12PC12316	PORT CONNECTOR	1
7	FT12TUR6316	REDUCER	1
8	FT6EE6316	ELBOW	1
9	FT6ET6316	UNION TEE	2
10	FT6FA4N316	ADAPTER	1
11	FT6MA4N316	ADAPTER	2
12	FT6MSEL4N316	ELBOW	1
13	FT6PC6316	PORT CONNECTOR	1
14	HHBS60813100	BOLT - GUARD CYLINDER	6
15	HHBS6112100927	BOLT - HEAD	8
16	HHJNS711116	JAM NUT	1
17	HHNS60624	HEX JAM NUT	1
18	HLWS6106	WASHER	1
19	OPTS112Q	OPTIRING	1
20	PBFLGHS6258-1	BOTTOM FLANGE - HEAD	1
21	PCYLHNS112	CYLINDER HEAD	1
22	PGCYLS6258	GUARD CYLINDER	1
23	PPBODHN5112	PISTON BODY	1
24	PPCAPHN5112	PISTON CAP	1
25	PPLGRHCE310	PLUNGER ROD	1
26	PPNS6108	PACKING NUT	1
27	PTFLGHS6258	TOP FLANGE - HEAD	1
28	RV010Q	RELIEF VALVE	1
29	SELORPF-3303	O-RING	2
30	ST35S606S	3/8" TUBE	1
31	ST65S606S	3/8" TUBE	1
32	ST65S612S	3/4" TUBE	1
33	V50500QLC	PACKING	1

MARKETING DRAWING

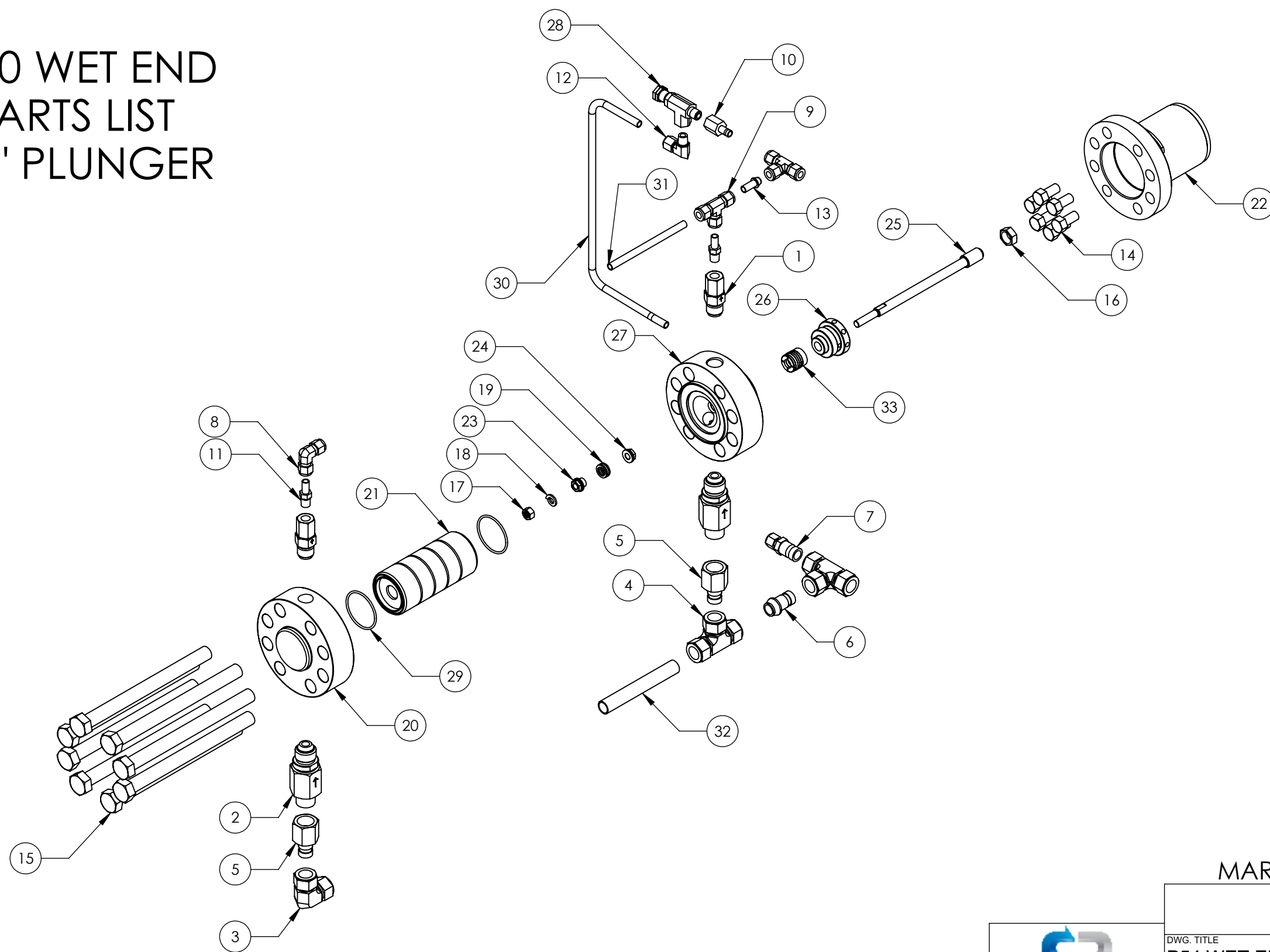
CheckPoint
Pumps & Systems

DWG. TITLE		SIZE
P54 WET END ASSY ADJ - 3/4" - FKM		
REV	DRAWING NUMBER	SHEET 2 OF 4
001	W54MN12CAQPN3Q6	B



PROPRIETARY AND CONFIDENTIAL
THE INFORMATION CONTAINED HEREIN IS PROPRIETARY TO CHECKPOINT SYSTEMS AND SHALL NOT BE REPRODUCED OR DISCLOSED IN WHOLE OR IN PART OR USED FOR ANY PURPOSE EXCEPT WHEN SUCH USER POSSESSES DIRECT WRITTEN AUTHORIZATION FROM CHECKPOINT SYSTEMS

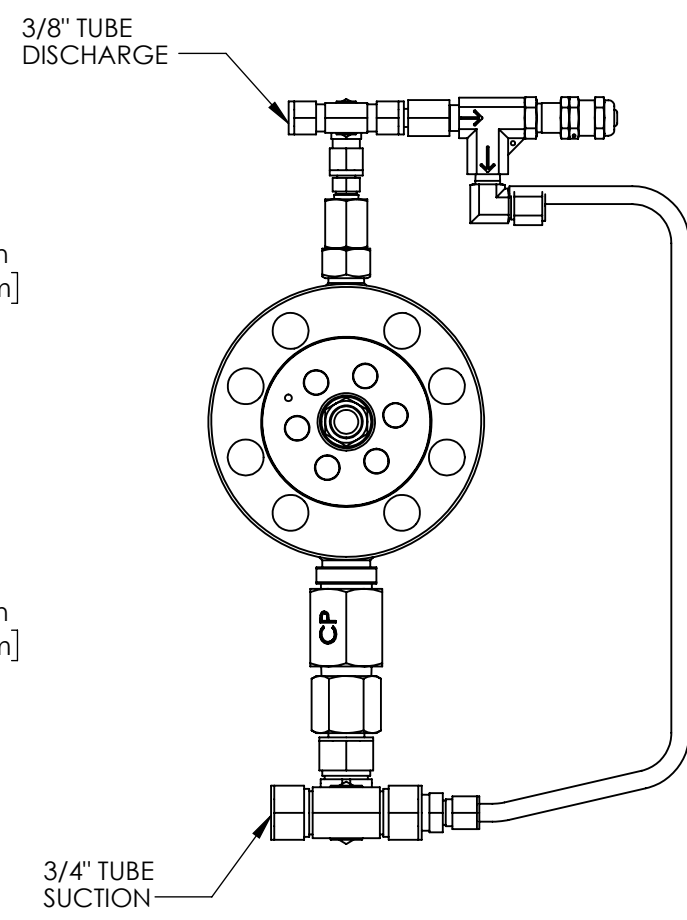
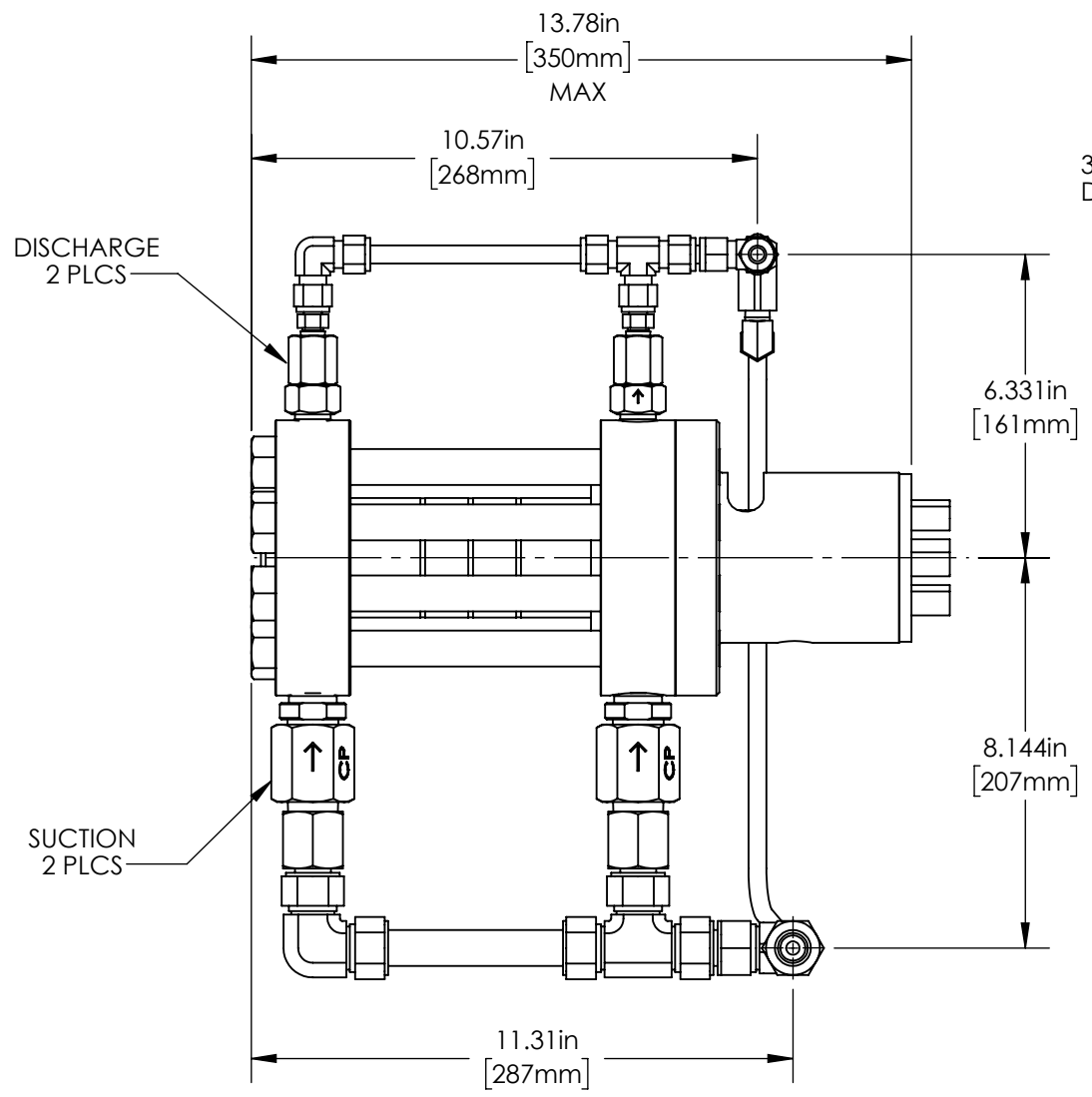
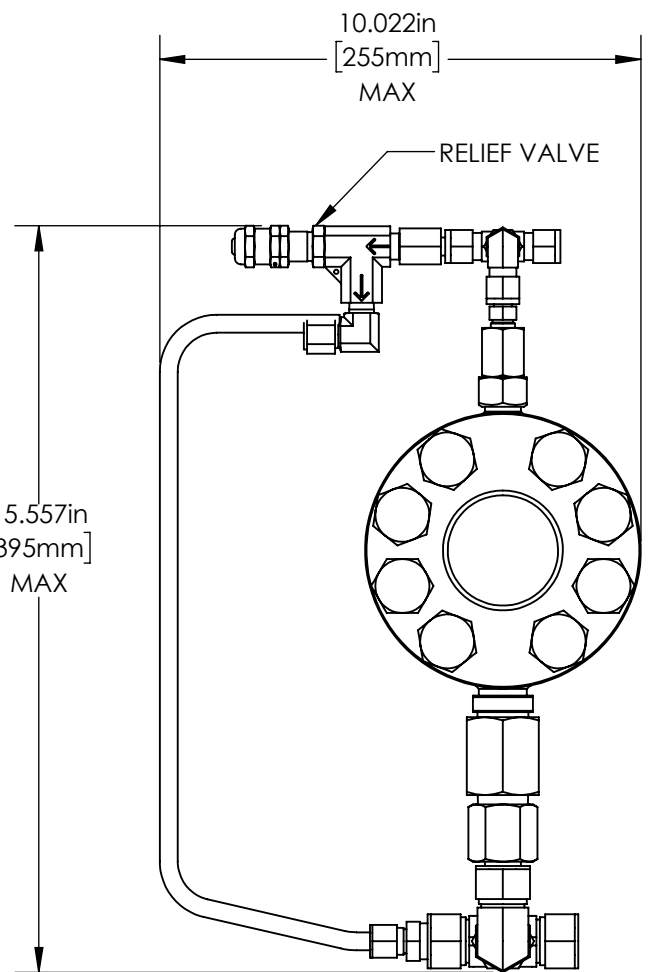
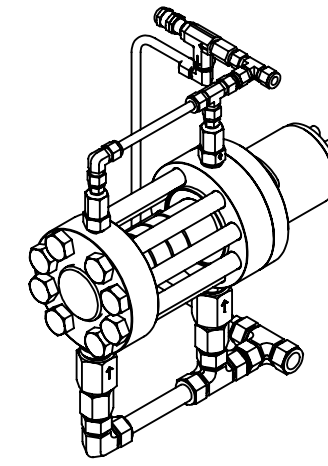
5400 WET END PARTS LIST 3/4" PLUNGER



MARKETING DRAWING		CheckPoint Pumps & Systems	
DWG. TITLE P54 WET END ASSY ADJ - 3/4" - FKM			
REV 001	W54MN12CAQPN3Q6	SIZE B	
DRAWING NUMBER		SHEET 3 OF 4	

8	7	6
PART #	HEAD MATERIAL	PLUNGER MATERIAL
W54MN16CAQPN3Q6	NITRONIC	CERAMIC

1	
DATE	APPROVED
MAR-11-25	WRS



MARKETING DRAWING

CheckPoint
Pumps & Systems



DWG. TITLE	W54 WET END ASSY ADJ - 1" - FKM	
REV	001	W54MN16CAQPN3Q6
DRAWING NUMBER		SHEET 1 OF 4

WEIGHT	54.21 lb / 24.59 kg
--------	---------------------

PROPRIETARY AND CONFIDENTIAL
THE INFORMATION CONTAINED HEREIN IS PROPRIETARY TO CHECKPOINT SYSTEMS AND SHALL NOT BE REPRODUCED OR DISCLOSED IN WHOLE OR IN PART OR USED FOR ANY PURPOSE EXCEPT WHEN SUCH USER POSSESSES DIRECT WRITTEN AUTHORIZATION FROM CHECKPOINT SYSTEMS

8

7

6

5

4

3

2

1

W54MN16CAHPN3H6

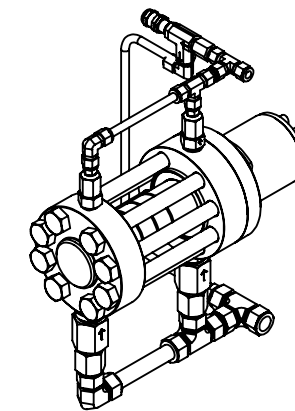
ITEM NO.	PART NUMBER	DESCRIPTION	QTY.
1	CDF04S6H101	CHECK ASSEMBLY	2
2	CSM12S6H101-010	SUCTION CHECK	2
3	FT12EE12316	3/4" TUBE ELBOW	1
4	FT12ET12316	3/4" TUBE TEE	2
5	FT12FA12N316	ADAPTER	2
6	FT12PC12316	PORT CONNECTOR	1
7	FT12TUR6316	REDUCER	1
8	FT6EE6316	ELBOW	1
9	FT6ET6316	UNION TEE	2
10	FT6FA4N316	ADAPTER	1
11	FT6MA4N316	ADAPTER	2
12	FT6MSEL4N316	ELBOW	1
13	FT6PC6316	PORT CONNECTOR	1
14	HHBS60813100	BOLT - GUARD CYLINDER	6
15	HHBS6112100927	BOLT - HEAD	8
16	HHJNS711116	JAM NUT	1
17	HHNS60820	JAM NUT - PLUNGER	1
18	NLWS6108	1/2" Nord Lock Washer	1
19	OPTS116H	OPTIRING	1
20	PBFLGHS6258-1	BOTTOM FLANGE - HEAD	1
21	PCYLHNS116	CYLINDER HEAD	1
22	PGCYLS6258	GUARD CYLINDER	1
23	PPBODHN5116	PISTON BODY - HEAD	1
24	PPCAPHN5116	PISTON CAP	1
25	PPLGRHS7210	PLUNGER ROD - HEAD	1
26	PPNS6110	PACKING NUT	1
27	PTFLGHS6258	TOP FLANGE - HEAD	1
28	RV05HH	RELIEF VALVE	1
29	SELORHN-3303	O-RING	2
30	ST35S606S	3/8" TUBE	1
31	ST65S606S	3/8" TUBE	1
32	ST65S612S	3/4" TUBE	1
34	V50635HLC	PACKING	1

W54MN16CAFPN3F6

ITEM NO.	PART NUMBER	DESCRIPTION	QTY.
1	CDF04S6F101	CHECK ASSEMBLY	2
2	CSM12S6F101-010	SUCTION CHECK	2
3	FT12EE12316	3/4" TUBE ELBOW	1
4	FT12ET12316	3/4" TUBE TEE	2
5	FT12FA12N316	ADAPTER	2
6	FT12PC12316	PORT CONNECTOR	1
7	FT12TUR6316	REDUCER	1
8	FT6EE6316	ELBOW	1
9	FT6ET6316	UNION TEE	2
10	FT6FA4N316	ADAPTER	1
11	FT6MA4N316	ADAPTER	2
12	FT6MSEL4N316	ELBOW	1
13	FT6PC6316	PORT CONNECTOR	1
14	HHBS60813100	BOLT - GUARD CYLINDER	6
15	HHBS6112100927	BOLT - HEAD	8
16	HHJNS711116	JAM NUT	1
17	HHNS60820	JAM NUT - PLUNGER	1
18	NLWS6108	1/2" Nord Lock Washer	1
19	OPTS116F	OPTIRING	1
20	PBFLGHS6258-1	BOTTOM FLANGE - HEAD	1
21	PCYLHNS116	CYLINDER HEAD	1
22	PGCYLS6258	GUARD CYLINDER	1
23	PPBODHN5116	PISTON BODY - HEAD	1
24	PPCAPHN5116	PISTON CAP	1
25	PPLGRHS7210	PLUNGER ROD - HEAD	1
26	PPNS6110	PACKING NUT	1
27	PTFLGHS6258	TOP FLANGE - HEAD	1
28	RV05HF	RELIEF VALVE	1
29	SELORFK-3303	O-RING	2
30	ST35S606S	3/8" TUBE	1
31	ST65S606S	3/8" TUBE	1
32	ST65S612S	3/4" TUBE	1
34	V50635FLC	PACKING	1

W54MN16CAQPN3Q6

ITEM NO.	PART NUMBER	DESCRIPTION	QTY.
1	CDF04S6Q101	CHECK ASSEMBLY	2
2	CSM12S6Q101-010	SUCTION CHECK	2
3	FT12EE12316	3/4" TUBE ELBOW	1
4	FT12ET12316	3/4" TUBE TEE	2
5	FT12FA12N316	ADAPTER	2
6	FT12PC12316	PORT CONNECTOR	1
7	FT12TUR6316	REDUCER	1
8	FT6EE6316	ELBOW	1
9	FT6ET6316	UNION TEE	2
10	FT6FA4N316	ADAPTER	1
11	FT6MA4N316	ADAPTER	2
12	FT6MSEL4N316	ELBOW	1
13	FT6PC6316	PORT CONNECTOR	1
14	HHBS60813100	BOLT - GUARD CYLINDER	6
15	HHBS6112100927	BOLT - HEAD	8
16	HHJNS711116	JAM NUT	1
17	HHNS60820	JAM NUT - PLUNGER	1
18	NLWS6108	1/2" Nord Lock Washer	1
19	OPTS116Q	OPTIRING	1
20	PBFLGHS6258-1	BOTTOM FLANGE - HEAD	1
21	PCYLHNS116	CYLINDER HEAD	1
22	PGCYLS6258	GUARD CYLINDER	1
23	PPBODHN5116	PISTON BODY - HEAD	1
24	PPCAPHN5116	PISTON CAP	1
25	PPLGRHS7210	PLUNGER ROD - HEAD	1
26	PPNS6110	PACKING NUT	1
27	PTFLGHS6258	TOP FLANGE - HEAD	1
28	RV05HQ	RELIEF VALVE	1
29	SELORHN-3303	O-RING	2
30	ST35S606S	3/8" TUBE	1
31	ST65S606S	3/8" TUBE	1
32	ST65S612S	3/4" TUBE	1
34	V50635QLC	PACKING	1



MARKETING DRAWING

CheckPoint
Pumps & Systems

DWG. TITLE

**W54 WET END ASSY
ADJ - 1" - FKM**

REV
001**W54MN16CAQPN3Q6**SIZE
B

DRAWING NUMBER

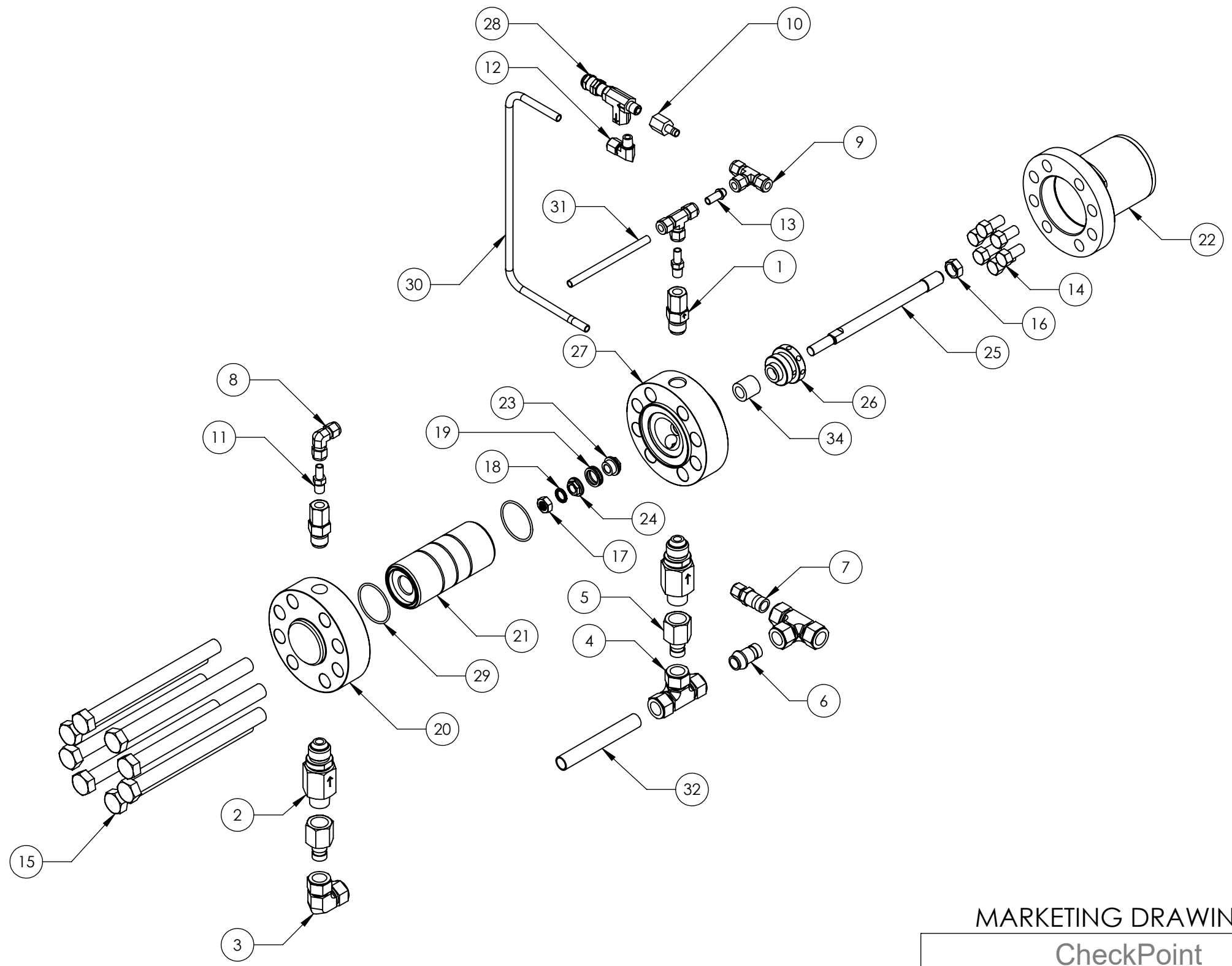
SHEET 2 OF 4



PROPRIETARY AND CONFIDENTIAL

THE INFORMATION CONTAINED HEREIN IS PROPRIETARY TO CHECKPOINT SYSTEMS AND SHALL NOT BE REPRODUCED OR DISCLOSED IN WHOLE OR IN PART OR USED FOR ANY PURPOSE EXCEPT WHEN SUCH USER POSSESSES DIRECT WRITTEN AUTHORIZATION FROM CHECKPOINT SYSTEMS

5400 WET END PARTS LIST 1" PLUNGER



MARKETING DRAWING

CheckPoint
Pumps & Systems

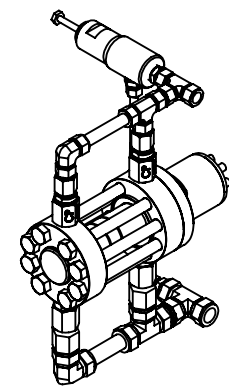
DWG. TITLE		SIZE B
W54 WET END ASSY ADJ - 1" - FKM		
REV	DRAWING NUMBER	SHEET 3 OF 4
001	W54MN16CAQPN3Q6	



PROPRIETARY AND CONFIDENTIAL
THE INFORMATION CONTAINED HEREIN IS PROPRIETARY TO CHECKPOINT SYSTEMS AND SHALL NOT BE REPRODUCED OR DISCLOSED IN WHOLE OR IN PART OR USED FOR ANY PURPOSE EXCEPT WHEN SUCH USER POSSESSES DIRECT WRITTEN AUTHORIZATION FROM CHECKPOINT SYSTEMS

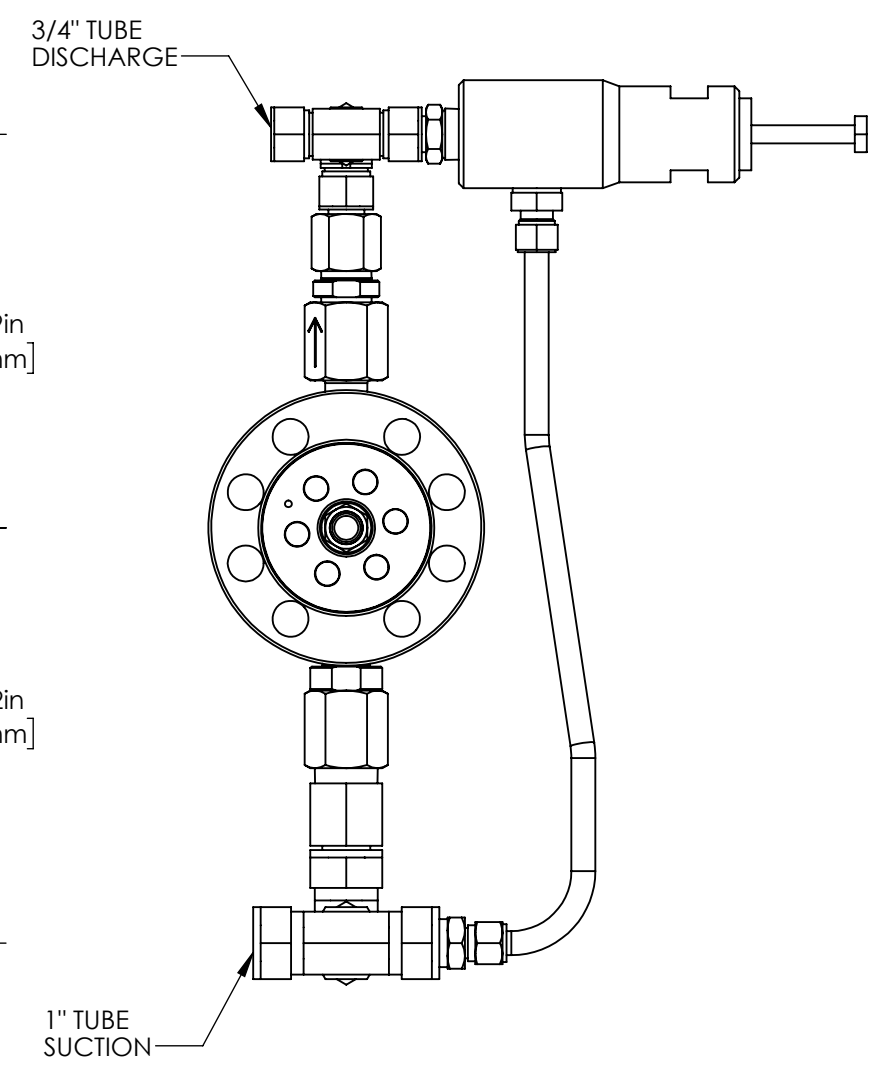
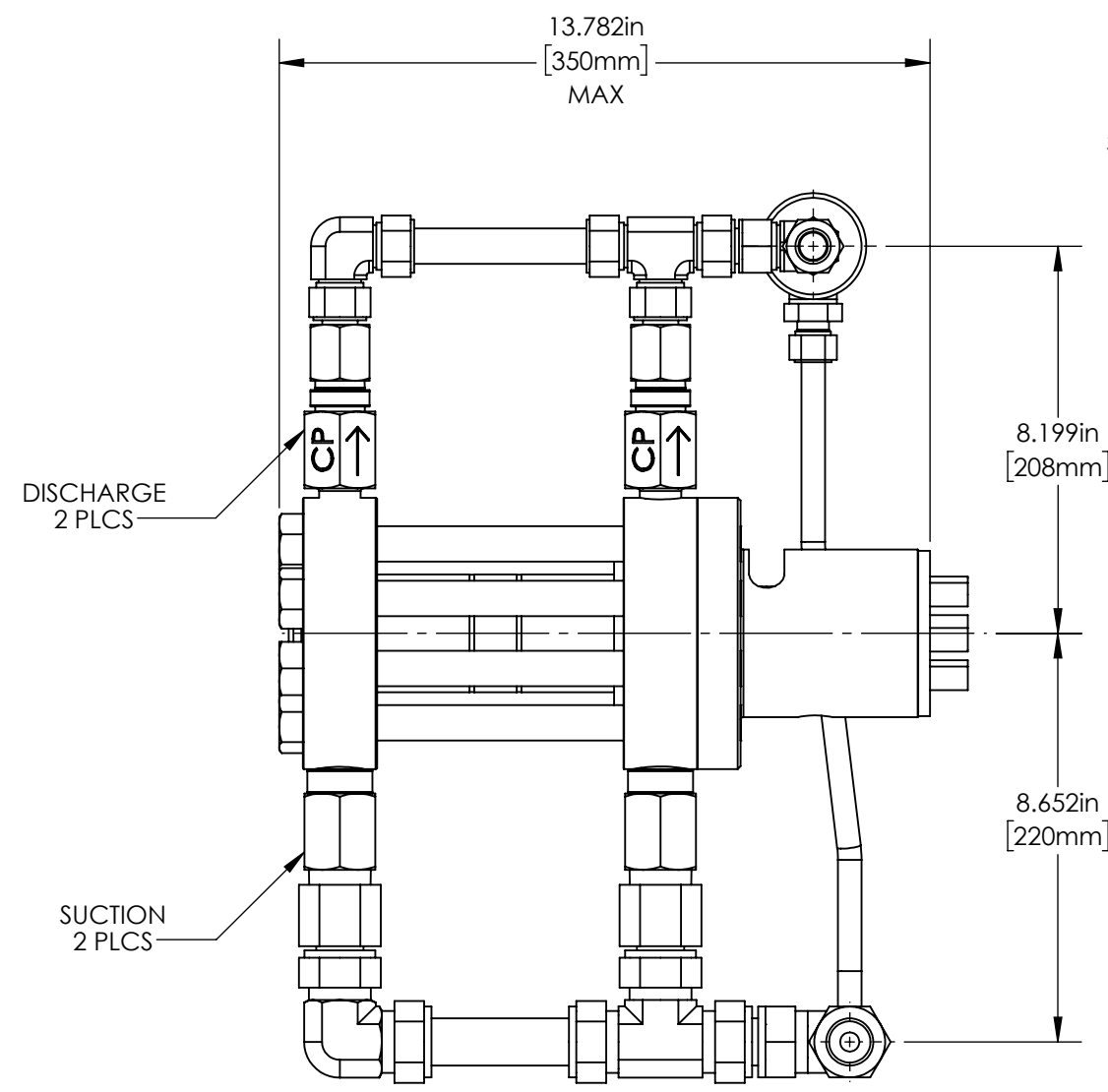
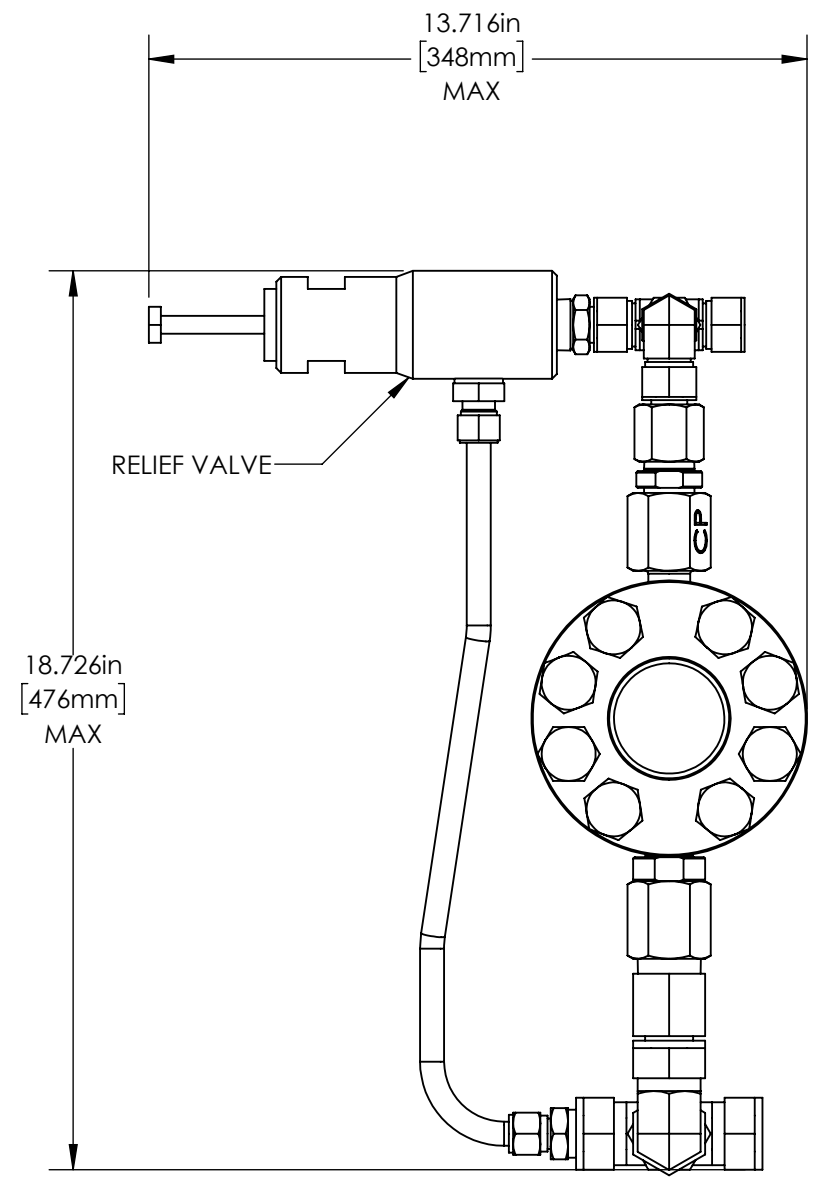
8	7	6
PART #	HEAD MATERIAL	PLUNGER MATERIAL
W58MN28CAQPN3Q6	NITRONIC	CERAMIC

1	
DATE	APPROVED
FEB-03-25	WRS



D
C
B
A

D
C
B
A



MARKETING DRAWING



CheckPoint Pumps & Systems	
DWG. TITLE W58 WET END ASSY ADJ- 1-3/4" -FKM	
REV 000	W58MN28CAQPN3Q6
DRAWING NUMBER	
SHEET 1 OF 4	

WEIGHT	60.86 lb / 27.60 kg
--------	---------------------

PROPRIETARY AND CONFIDENTIAL
THE INFORMATION CONTAINED HEREIN IS PROPRIETARY TO CHECKPOINT SYSTEMS AND SHALL NOT BE REPRODUCED OR DISCLOSED IN WHOLE OR IN PART OR USED FOR ANY PURPOSE EXCEPT WHEN SUCH USER POSSESSES DIRECT WRITTEN AUTHORIZATION FROM CHECKPOINT SYSTEMS

8

7

6

5

4

3

2

1

W58MN28CAHPN3H6

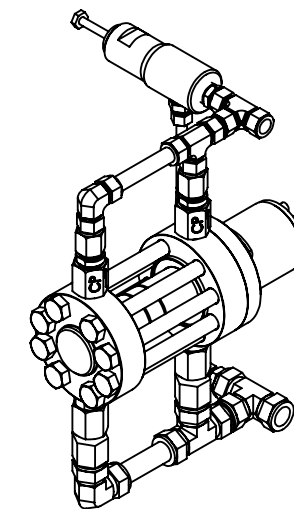
ITEM NO.	PART NUMBER	DESCRIPTION	QTY.
1	CDM12S6H101	CHECK ASSY	2
2	CSM16S6H101	CHECK ASSY	2
3	FT12EE12316	3/4" TUBE ELBOW	1
4	FT12ET12316	3/4" TUBE TEE	2
5	FT12FA12N316	ADAPTER	2
6	FT12MA12N316	ADAPTER	1
7	FT12PC12316	PORT CONNECTOR	1
8	FT16EE16316	ELBOW	1
9	FT16ET16316	TEE	2
10	FT16FA16N316	ADAPTER	2
11	FT16PC16316	PORT CONNECTOR	1
12	FT16TUR8316	REDUCER	1
13	FT8MSC12N316	CONNECTOR	1
14	HHBS60813100	BOLT - GUARD CYLINDER	6
15	HHBS6112100927	BOLT - HEAD	8
16	HHJNS711116	JAM NUT	1
17	HHNS60820	JAM NUT - PLUNGER	1
18	NLWS6108	1/2" Nord Lock Washer	1
19	OPTS128H	OPTIRING	1
20	PBFLGHS6258-1	BOTTOM FLANGE - HEAD	1
21	PCYLHNS128	CYLINDER HEAD	1
22	PGCYLS6258	GUARD CYLINDER	1
23	PPBODHN5128-1	PISTON BODY	1
24	PPCAPHN5128-1	PISTON CAP	1
25	PPLGRHCE210-1	PLUNGER ROD	1
26	PPNS6110	PACKING NUT	1
27	PTFLGHS6258	TOP FLANGE - HEAD	1
28	RVC05-07T-4500	RELIEF VALVE	1
29	SELORHN-3303	O-RING	2
30	ST65S616S	1" TUBING	1
31	ST83S612S	0.75" TUBING	1
32	ST35S608S	3/4" TUBING	1
33	V50635HLC	PACKING	1

W58MN28CAFPN3F6

ITEM NO.	PART NUMBER	DESCRIPTION	QTY.
1	CDM12S6F101	CHECK ASSY	2
2	CSM16S6F101	CHECK ASSY	2
3	FT12EE12316	3/4" TUBE ELBOW	1
4	FT12ET12316	3/4" TUBE TEE	2
5	FT12FA12N316	ADAPTER	2
6	FT12MA12N316	ADAPTER	1
7	FT12PC12316	PORT CONNECTOR	1
8	FT16EE16316	ELBOW	1
9	FT16ET16316	TEE	2
10	FT16FA16N316	ADAPTER	2
11	FT16PC16316	PORT CONNECTOR	1
12	FT16TUR8316	REDUCER	1
13	FT8MSC12N316	CONNECTOR	1
14	HHBS60813100	BOLT - GUARD CYLINDER	6
15	HHBS6112100927	BOLT - HEAD	8
16	HHJNS711116	JAM NUT	1
17	HHNS60820	JAM NUT - PLUNGER	1
18	NLWS6108	1/2" Nord Lock Washer	1
19	OPTS128F	OPTIRING	1
20	PBFLGHS6258-1	BOTTOM FLANGE - HEAD	1
21	PCYLHNS128	CYLINDER HEAD	1
22	PGCYLS6258	GUARD CYLINDER	1
23	PPBODHN5128-1	PISTON BODY	1
24	PPCAPHN5128-1	PISTON CAP	1
25	PPLGRHCE210-1	PLUNGER ROD	1
26	PPNS6110	PACKING NUT	1
27	PTFLGHS6258	TOP FLANGE - HEAD	1
28	RVC05-07T-4500	RELIEF VALVE	1
29	SELORFK-3303	O-RING	2
30	ST65S616S	1" TUBING	1
31	ST83S612S	0.75" TUBING	1
32	ST35S608S	3/4" TUBING	1
33	V50635FLC	PACKING	1

W58MN28CAQPN3Q6

ITEM NO.	PART NUMBER	DESCRIPTION	QTY.
1	CDM12S6Q101	CHECK ASSY	2
2	CSM16S6Q101	CHECK ASSY	2
3	FT12EE12316	3/4" TUBE ELBOW	1
4	FT12ET12316	3/4" TUBE TEE	2
5	FT12FA12N316	ADAPTER	2
6	FT12MA12N316	ADAPTER	1
7	FT12PC12316	PORT CONNECTOR	1
8	FT16EE16316	ELBOW	1
9	FT16ET16316	TEE	2
10	FT16FA16N316	ADAPTER	2
11	FT16PC16316	PORT CONNECTOR	1
12	FT16TUR8316	REDUCER	1
13	FT8MSC12N316	CONNECTOR	1
14	HHBS60813100	BOLT - GUARD CYLINDER	6
15	HHBS6112100927	BOLT - HEAD	8
16	HHJNS711116	JAM NUT	1
17	HHNS60820	JAM NUT - PLUNGER	1
18	NLWS6108	1/2" Nord Lock Washer	1
19	OPTS128Q	OPTIRING	1
20	PBFLGHS6258-1	BOTTOM FLANGE - HEAD	1
21	PCYLHNS128	CYLINDER HEAD	1
22	PGCYLS6258	GUARD CYLINDER	1
23	PPBODHN5128-1	PISTON BODY	1
24	PPCAPHN5128-1	PISTON CAP	1
25	PPLGRHCE210-1	PLUNGER ROD	1
26	PPNS6110	PACKING NUT	1
27	PTFLGHS6258	TOP FLANGE - HEAD	1
28	RVC05-07T-4500	RELIEF VALVE	1
29	SELORPF-3303	O-RING	2
30	ST65S616S	1" TUBING	1
31	ST83S612S	0.75" TUBING	1
32	ST35S608S	3/4" TUBING	1
33	V50635QLC	PACKING	1



MARKETING DRAWING

CheckPoint
Pumps & Systems

DWG. TITLE
**W58 WET END ASSY
ADJ- 1-3/4" -FKM**

REV
000 **W58MN28CAQPN3Q6**

SIZE
B

DRAWING NUMBER

SHEET 2 OF 4



PROPRIETARY AND CONFIDENTIAL

THE INFORMATION CONTAINED HEREIN IS PROPRIETARY TO CHECKPOINT SYSTEMS AND SHALL NOT BE REPRODUCED OR DISCLOSED IN WHOLE OR IN PART OR USED FOR ANY PURPOSE EXCEPT WHEN SUCH USER POSSESSES DIRECT WRITTEN AUTHORIZATION FROM CHECKPOINT SYSTEMS

8

7

6

5

4

3

2

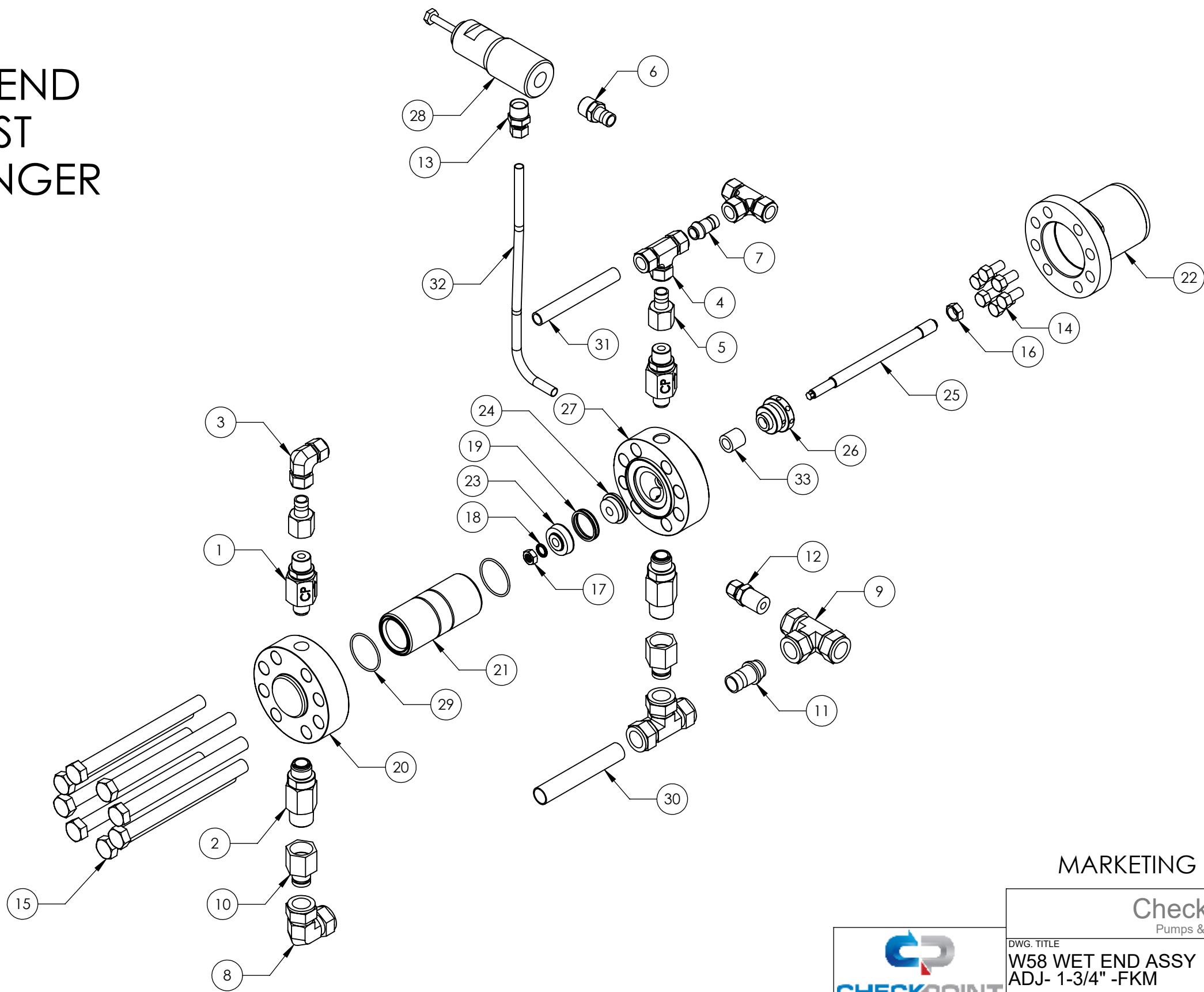
1

CPHQ/PTL-SHR-325

REV. 01

EFF. DATE: 10 JUL 2025

54-84 WET END PARTS LIST 1 - 3/4" PLUNGER



MARKETING DRAWING

CheckPoint
Pumps & Systems

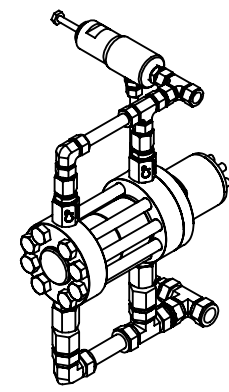
DWG. TITLE		SIZE B
W58 WET END ASSY ADJ- 1-3/4" -FKM		
REV	000	W58MN28CAQPN3Q6
DRAWING NUMBER		SHEET 3 OF 4



PROPRIETARY AND CONFIDENTIAL
THE INFORMATION CONTAINED HEREIN IS PROPRIETARY TO CHECKPOINT SYSTEMS AND SHALL NOT BE REPRODUCED OR DISCLOSED IN WHOLE OR IN PART OR USED FOR ANY PURPOSE EXCEPT WHEN SUCH USER POSSESSES DIRECT WRITTEN AUTHORIZATION FROM CHECKPOINT SYSTEMS

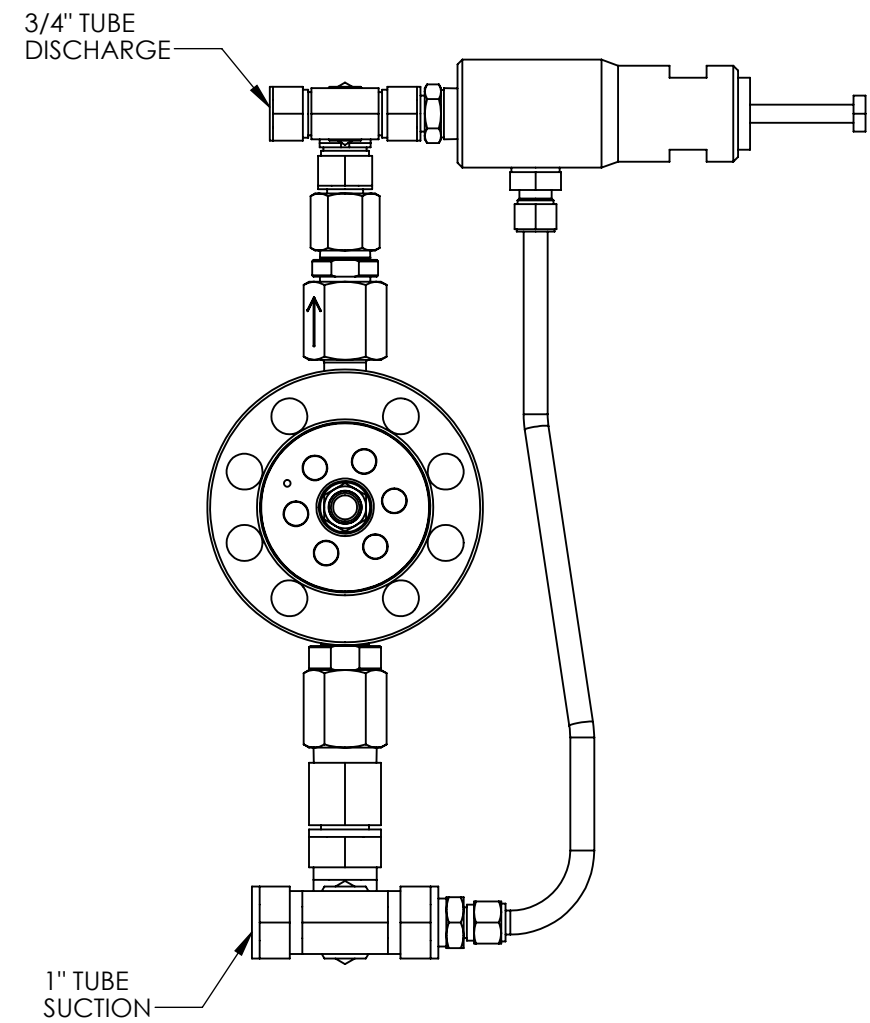
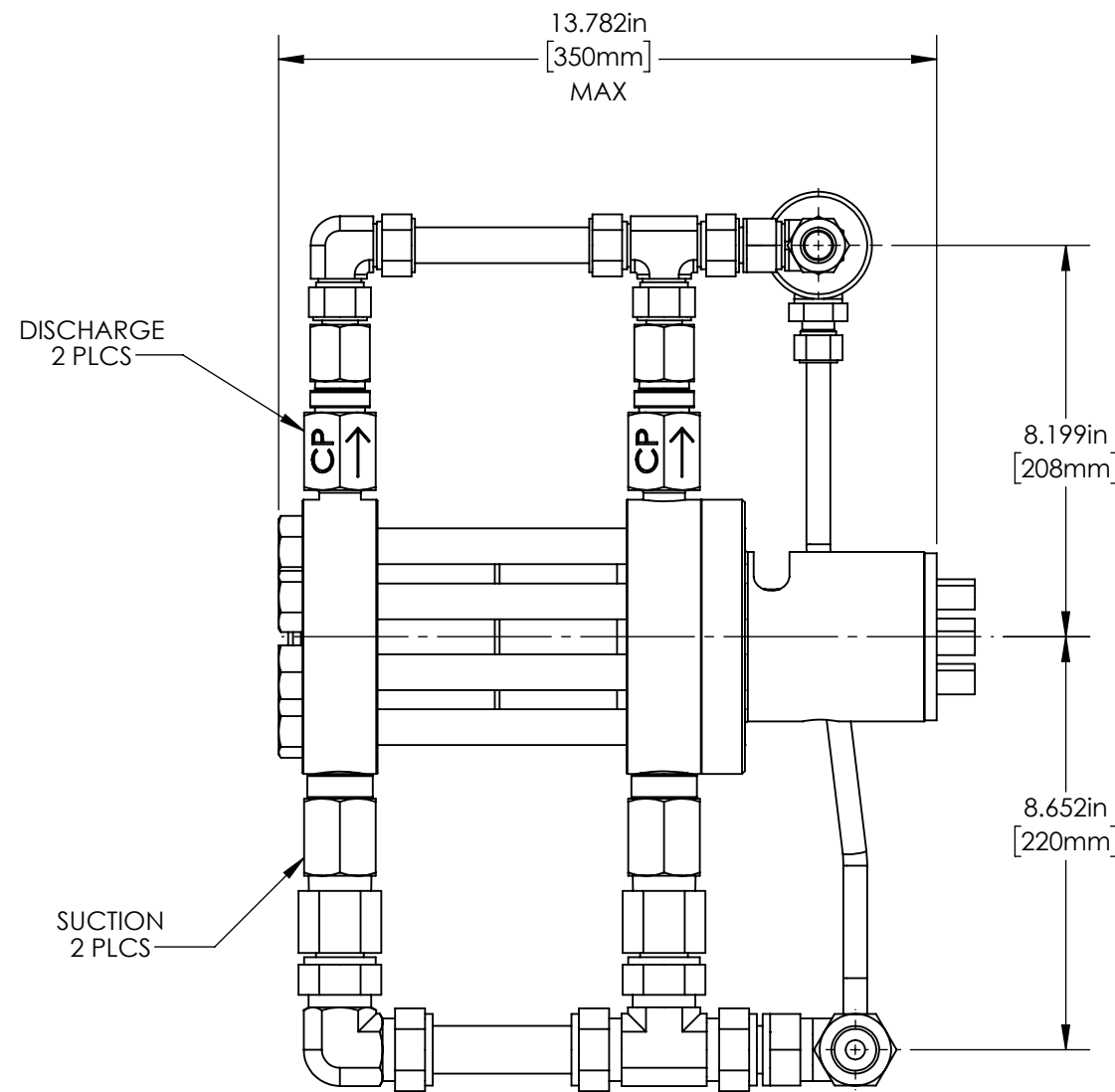
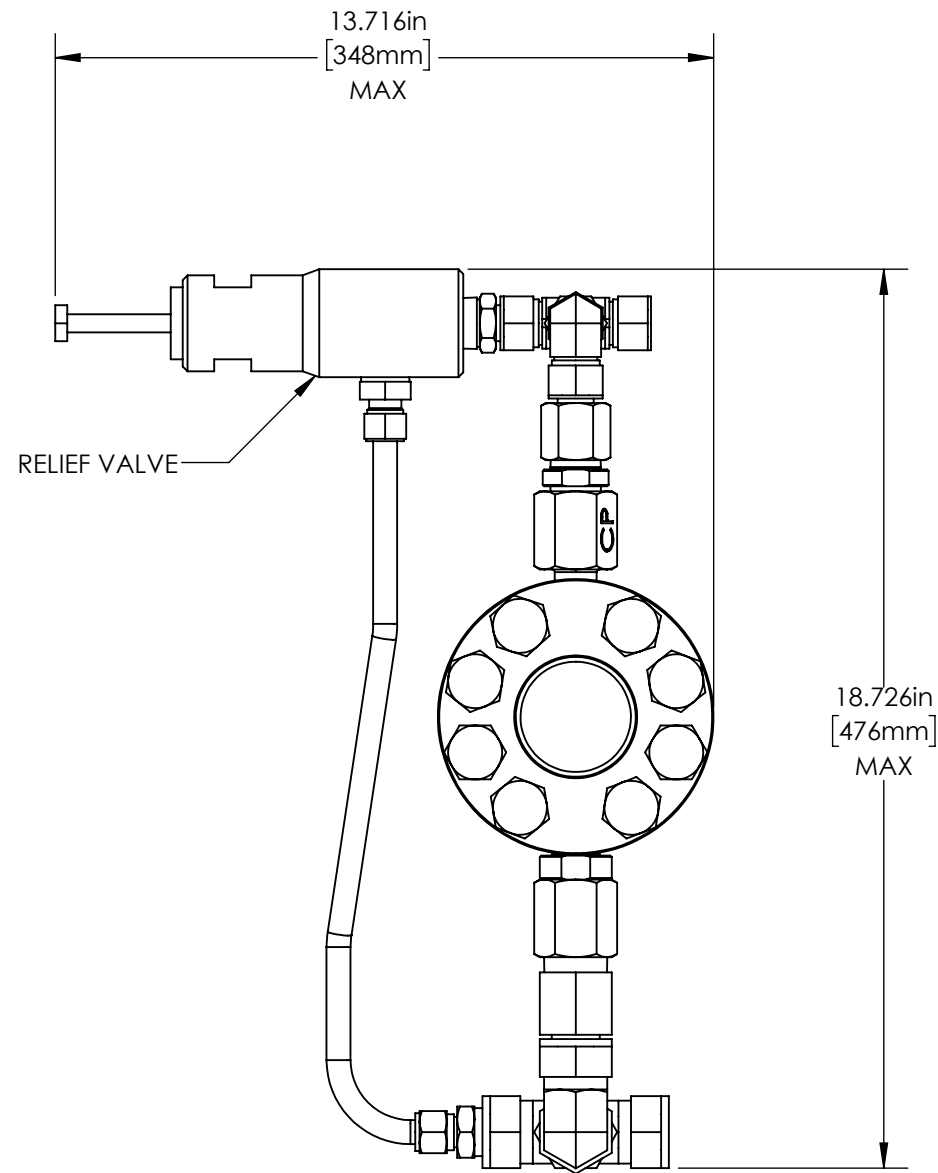
8	7	6
PART #	HEAD MATERIAL	PLUNGER MATERIAL
W58MN40CAQPN3Q6	NITRONIC	CERAMIC

1	
DATE	APPROVED
FEB-03-25	WRS



D
C
B
A

D
C
B
A



MARKETING DRAWING

CheckPoint
Pumps & Systems

DWG. TITLE		REV	W58MN40CAQPN3Q6	SIZE B
W58 WET END ASSY ADJ- 2-1/2" - FKM				
DRAWING NUMBER			SHEET 1 OF 4	



PROPRIETARY AND CONFIDENTIAL
THE INFORMATION CONTAINED HEREIN IS PROPRIETARY TO CHECKPOINT SYSTEMS AND SHALL NOT BE REPRODUCED OR DISCLOSED IN WHOLE OR IN PART OR USED FOR ANY PURPOSE EXCEPT WHEN SUCH USER POSSESSES DIRECT WRITTEN AUTHORIZATION FROM CHECKPOINT SYSTEMS

WEIGHT 60.86 lb / 27.60 kg

8

7

6

5

4

3

2

1

W58MN40CAHPN3H6

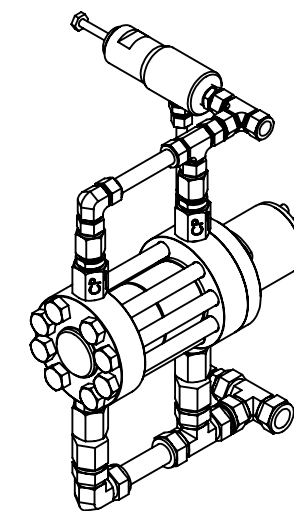
ITEM NO.	PART NUMBER	DESCRIPTION	QTY.
1	CDM12S6H101	CHECK ASSY	2
2	CSM16S6H101	CHECK ASSY	2
3	FT12EE12316	3/4" TUBE ELBOW	1
4	FT12ET12316	3/4" TUBE TEE	2
5	FT12FA12N316	ADAPTER	2
6	FT12MA12N316	ADAPTER	1
7	FT12PC12316	PORT CONNECTOR	1
8	FT16EE16316	ELBOW	1
9	FT16ET16316	TEE	2
10	FT16FA16N316	ADAPTER	2
11	FT16PC16316	PORT CONNECTOR	1
12	FT16TUR8316	REDUCER	1
13	FT8MSC12N316	CONNECTOR	1
14	HHBS60813100	BOLT - GUARD CYLINDER	6
15	HHBS6112100927	BOLT - HEAD	8
16	HHJNS711116	JAM NUT	1
17	HHNS60820	JAM NUT - PLUNGER	1
18	NLWS6108	1/2" Nord Lock Washer	1
19	OPTS140H	OPTIRING - HEAD	1
20	ORHN4803	O-RING	2
21	PBFLGHS6258-1	BOTTOM FLANGE - HEAD	1
22	PCYLHNS140	CYLINDER HEAD	1
23	PGCYLS6258	GUARD CYLINDER	1
24	PPBODHN5140-1	PISTON BODY	1
25	PPCAPHN5140-1	PISTON CAP	1
26	PPLGRHCE210-1	PLUNGER ROD	1
27	PPNS6110	PACKING NUT	1
28	PTFLGHS6258	TOP FLANGE - HEAD	1
29	RVC05-07T-4500	RELIEF VALVE	1
30	ST83S612S	TUBE	1
31	ST65S616S	TUBE	1
32	ST35S608S	TUBE	1
33	V50635HLC	PACKING	1

W58MN40CAFPN3F6

ITEM NO.	PART NUMBER	DESCRIPTION	QTY.
1	CDM12S6F101	CHECK ASSY	2
2	CSM16S6F101	CHECK ASSY	2
3	FT12EE12316	3/4" TUBE ELBOW	1
4	FT12ET12316	3/4" TUBE TEE	2
5	FT12FA12N316	ADAPTER	2
6	FT12MA12N316	ADAPTER	1
7	FT12PC12316	PORT CONNECTOR	1
8	FT16EE16316	ELBOW	1
9	FT16ET16316	TEE	2
10	FT16FA16N316	ADAPTER	2
11	FT16PC16316	PORT CONNECTOR	1
12	FT16TUR8316	REDUCER	1
13	FT8MSC12N316	CONNECTOR	1
14	HHBS60813100	BOLT - GUARD CYLINDER	6
15	HHBS6112100927	BOLT - HEAD	8
16	HHJNS711116	JAM NUT	1
17	HHNS60820	JAM NUT - PLUNGER	1
18	NLWS6108	1/2" Nord Lock Washer	1
19	OPTS140F	OPTIRING - HEAD	1
20	ORFK4803	O-RING	2
21	PBFLGHS6258-1	BOTTOM FLANGE - HEAD	1
22	PCYLHNS140	CYLINDER HEAD	1
23	PGCYLS6258	GUARD CYLINDER	1
24	PPBODHN5140-1	PISTON BODY	1
25	PPCAPHN5140-1	PISTON CAP	1
26	PPLGRHCE210-1	PLUNGER ROD	1
27	PPNS6110	PACKING NUT	1
28	PTFLGHS6258	TOP FLANGE - HEAD	1
29	RVC05-07T-4500	RELIEF VALVE	1
30	ST35S608S	TUBE	1
31	ST65S616S	TUBE	1
32	ST83S612S	TUBE	1
33	V50635FLC	PACKING	1

W58MN40CAQPN3Q6

ITEM NO.	PART NUMBER	DESCRIPTION	QTY.
1	CDM12S6Q101	CHECK ASSY	2
2	CSM16S6Q101	CHECK ASSY	2
3	FT12EE12316	3/4" TUBE ELBOW	1
4	FT12ET12316	3/4" TUBE TEE	2
5	FT12FA12N316	ADAPTER	2
6	FT12MA12N316	ADAPTER	1
7	FT12PC12316	PORT CONNECTOR	1
8	FT16EE16316	ELBOW	1
9	FT16ET16316	TEE	2
10	FT16FA16N316	ADAPTER	2
11	FT16PC16316	PORT CONNECTOR	1
12	FT16TUR8316	REDUCER	1
13	FT8MSC12N316	CONNECTOR	1
14	HHBS60813100	BOLT - GUARD CYLINDER	6
15	HHBS6112100927	BOLT - HEAD	8
16	HHJNS711116	JAM NUT	1
17	HHNS60820	JAM NUT - PLUNGER	1
18	NLWS6108	1/2" Nord Lock Washer	1
19	OPTS140Q	OPTIRING - HEAD	1
20	ORPF4803	O-RING	2
21	PBFLGHS6258-1	BOTTOM FLANGE - HEAD	1
22	PCYLHNS140	CYLINDER HEAD	1
23	PGCYLS6258	GUARD CYLINDER	1
24	PPBODHN5140-1	PISTON BODY	1
25	PPCAPHN5140-1	PISTON CAP	1
26	PPLGRHCE210-1	PLUNGER ROD	1
27	PPNS6110	PACKING NUT	1
28	PTFLGHS6258	TOP FLANGE - HEAD	1
29	RVC05-07T-4500	RELIEF VALVE	1
30	ST35S608S	TUBE	1
31	ST65S616S	TUBE	1
32	ST83S612S	TUBE	1
33	V50635QLC	PACKING	1

**MARKETING DRAWING**

CheckPoint
Pumps & Systems

DWG. TITLE
**W58 WET END ASSY
ADJ- 2-1/2" - FKM**

REV 000 **W58MN40CAQPN3Q6**

SIZE
B

DRAWING NUMBER

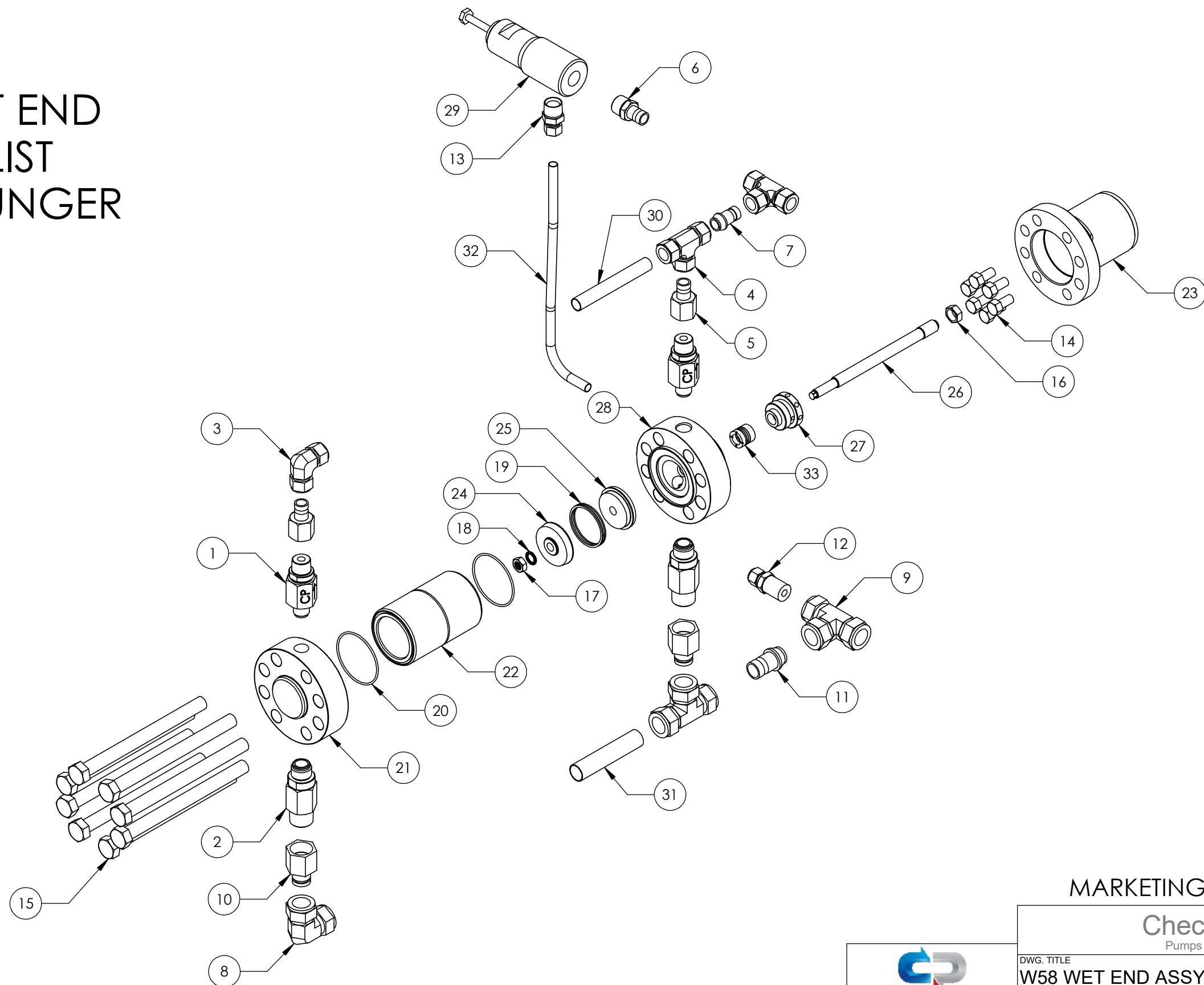
SHEET 2 OF 4



PROPRIETARY AND CONFIDENTIAL

THE INFORMATION CONTAINED HEREIN IS PROPRIETARY TO CHECKPOINT SYSTEMS AND SHALL NOT BE REPRODUCED OR DISCLOSED IN WHOLE OR IN PART OR USED FOR ANY PURPOSE EXCEPT WHEN SUCH USER POSSESSES DIRECT WRITTEN AUTHORIZATION FROM CHECKPOINT SYSTEMS

54-84 WET END PARTS LIST 2 - 1/2" PLUNGER



MARKETING DRAWING

CheckPoint
Pumps & Systems

DWG. TITLE		SIZE B
W58 WET END ASSY ADJ- 2-1/2" - FKM		
REV	000	W58MN40CAQPN3Q6
DRAWING NUMBER		SHEET 3 OF 3



PROPRIETARY AND CONFIDENTIAL
THE INFORMATION CONTAINED HEREIN IS PROPRIETARY TO CHECKPOINT SYSTEMS AND SHALL NOT BE REPRODUCED OR DISCLOSED IN WHOLE OR IN PART OR USED FOR ANY PURPOSE EXCEPT WHEN SUCH USER POSSESSES DIRECT WRITTEN AUTHORIZATION FROM CHECKPOINT SYSTEMS